

Roadway Evaluation Criteria Matrix

State Highway 7 Environmental Assessment DRAFT Short-Listed Alternatives Evaluation Summary 11/5/2004

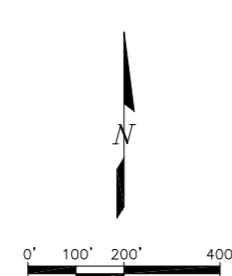
(Includes Preferred BNSF RR Alternative 3)

Issues	Improvement Alternatives		
	Alt. 1	Alt. 2	Alt. 3
	No Action	Four-Lane Urban with Transit Lanes West of 63rd, 4-Lane Urban to Votec, 2-Lane Rural to 75th Improvements	Four-Lane Section with Transit Lanes West of 63rd , Urban West of Westview, Rural East of Westview.
Transportation Issues			
Traffic Operations			
63rd and BVSD Intersection (Signalized Intersection-LOS)	C	B	B
Road Segment Cherryvale to BVSD (LOS)	F	C	C
Road Segment BVSD to 75th (LOS)	E	E	C
Travel Time 75th to Cherryvale	6 min.	5 min.	5 min.
Safety	Substandard Shoulders, Sight Distance, Acceleration and Deceleration lanes	Improved Geometry, Sight Distance and Access Management	Improved Geometry, Sight Distance, Access Management, and Reduced Potential Vehicle Conflicts
Pedestrian and Bicycle Enhancements	None	Add Sidewalks Add Bike Lanes	Add Sidewalks Add Bike Lanes
Transit Enhancements	No	Yes Improved Stops and Accessibility, Bus Priority Features Incorporated	Yes Improved Stops and Accessibility, Bus Priority Features Incorporated
Community Issues			
Owner / Business Relocations	0 Residential 0 Business	2 Residential Mobile Homes 2-3 Business	2 Residential Mobile Homes 2-3 Business
Right-of-Way Impacts	0 Buildings 0 Parcels	4-5 Buildings 27 Parcels	4-5 Buildings 27 Parcels
Impact to Low Income or Minority Populations	None	60' Width ROW Take	60' Width ROW Take
Access from Adjacent Properties	Poor	Fair All Warranted Auxiliary Lanes Incorporated	Good All Warranted Auxiliary Lanes Incorporated, Additional Laneage Provides Additional Opportunities
Compatible with Local Planning (RTTF and East Arapahoe Transportation Network Plan)	No	Yes	Partial
Compatible with Regional Planning (DRCOG)	No	Yes	Partial
Public Support	Generally Unsupported	Generally Favored Over No Action	Generally Preferred
Environmental Issues			
Wetlands	0 Acres	0.06 Ac Jurisd. 0.38 Ac Non-Jurisd.	0.06 Ac Jurisd. 0.38 Ac Non-Jurisd.
Noise	0 Receptors Impacted	3-4 Receptors Impacted	3-4 Receptors Impacted
Air Quality	No Improvement	Some Improvement	Most Improvement
Historic Resources	0 Properties Adversely Impacted	1-2 Properties Adversely Impacted	1-2 Properties Adversely Impacted
Section 4 (f)	0 Properties Adversely Impacted	1-2 Property Adversely Impacted	1-2 Property Adversely Impacted
Endangered Species	None	None	None
Wildlife	None	Minimal	Minimal
Visual Impacts	None	Potential 20' Walls Over Hill or Slope Impacts w/Removal of Trees 60' Pvm. Width Over Hill	Potential 23' Walls Over Hill or Slope Impacts w/Removal of Trees 84' Pvm. Width Over Hill
Implementation Issues			
Cost	\$0 M	\$19 M*	\$21 M*
Maintenance	Poor	Good	Good
Ease of Construction	No Construction	Constructable	Constructable
Overall Rating		Good	Preferred

*Preliminary Estimates (For Comparative Purposes)

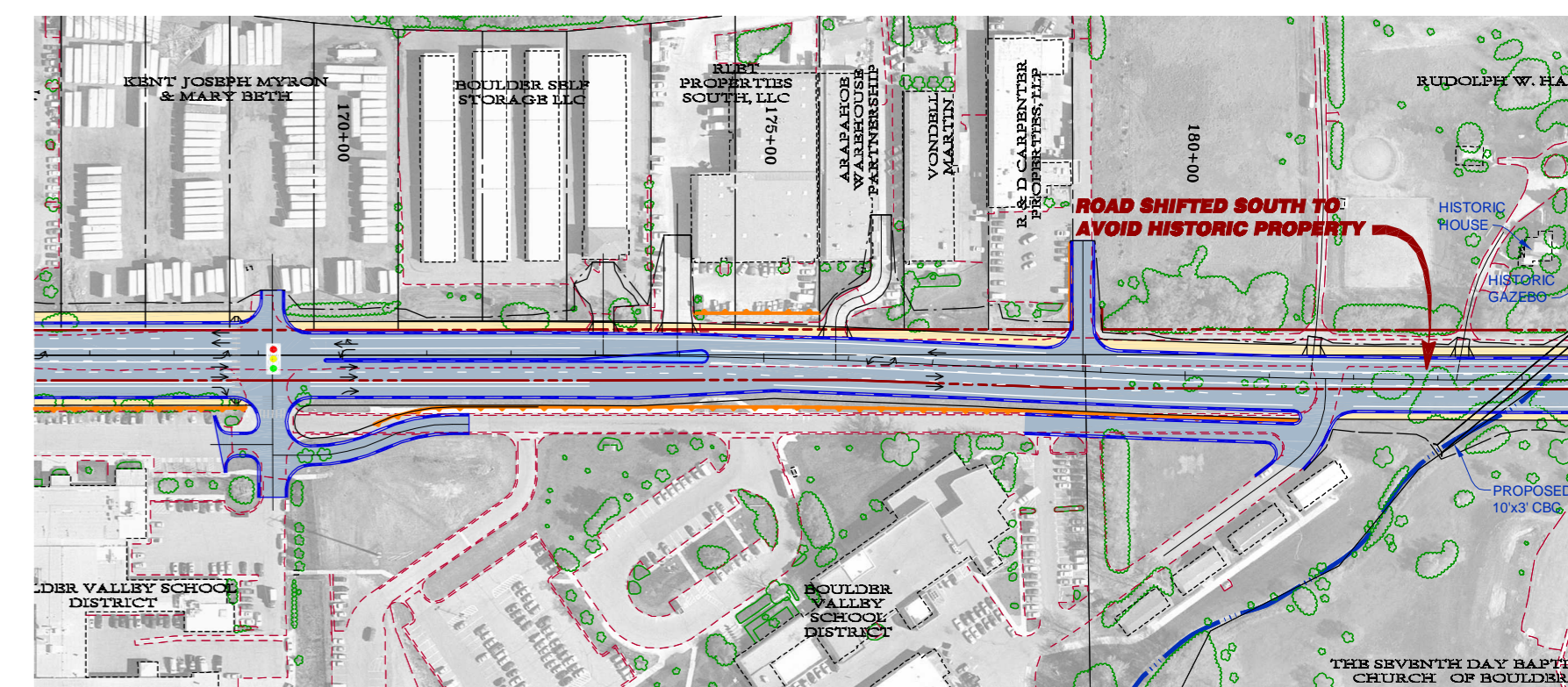
STATE HIGHWAY 7 POSSIBLE IMPROVEMENT ALTERNATIVES

CHERRYVALE ROAD TO 75TH STREET

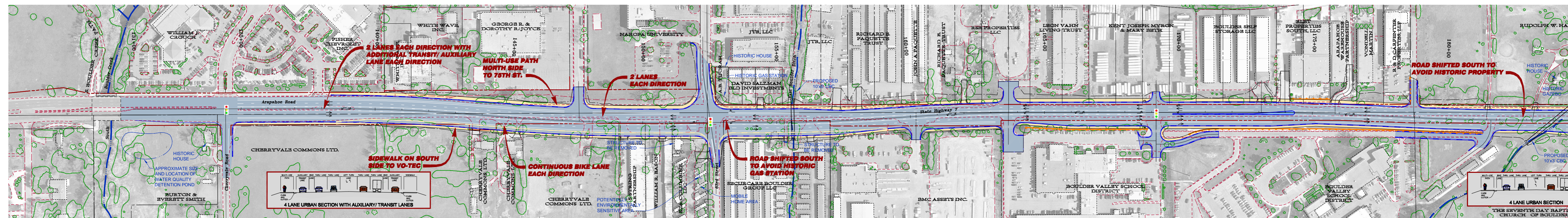


- Legend**
- RIGHT-OF-WAY
 - EXISTING EDGE OF PAVEMENT
 - EXISTING DITCH
 - EXISTING VEGETATION
 - PROPOSED IMPROVEMENTS
 - PROPOSED CURB AND GUTTER
 - PROPOSED LANE STRIPING
 - SIDEWALK/ TRAIL
 - PROPOSED RETAINING WALL
 - SIGNALIZED INTERSECTION

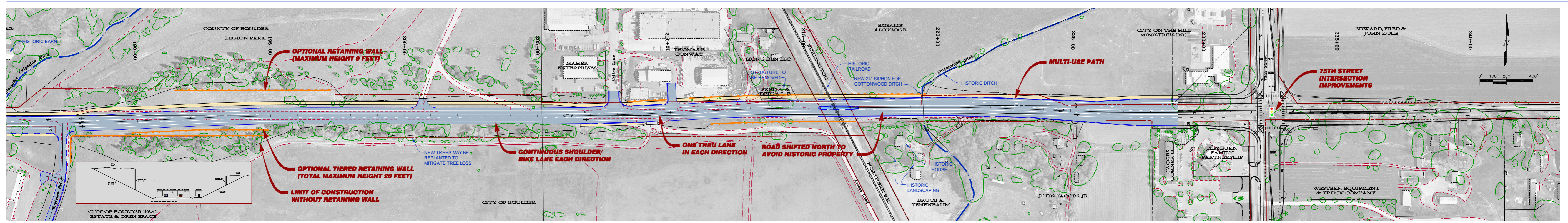
←
ALTERNATIVE 2
AND 3 ARE
IDENTICAL WEST
OF VOTEC ENTRANCE
←



ALTERNATIVE 2
TWO LANE SECTION (ONE IN EACH DIRECTION) WITH TURN LANES FROM VOTEC TO 75TH IMPROVEMENTS

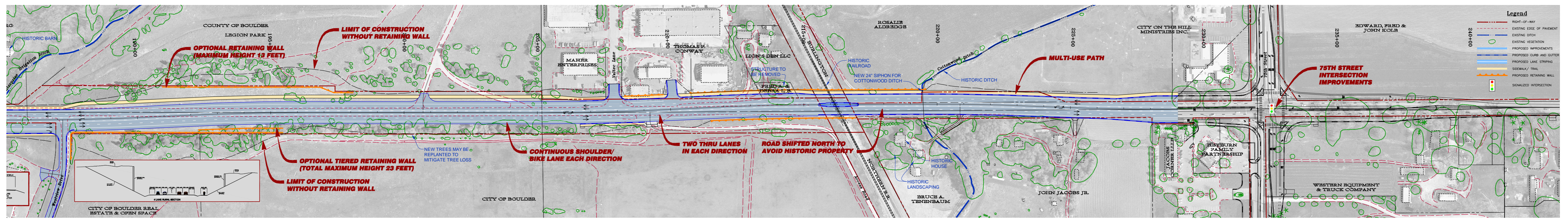


ALTERNATIVE 3 (PREFERRED)
FOUR LANE SECTION (TWO IN EACH DIRECTION) WITH TURN LANES



ALTERNATIVE 2

TWO LANE SECTION (ONE IN EACH DIRECTION) WITH TURN LANES FROM VOTEC TO 75TH IMPROVEMENTS



ALTERNATIVE 3 (PREFERRED)

FOUR LANE SECTION (TWO IN EACH DIRECTION) WITH TURN LANES

PHOTO SIMULATION OF ALTERNATIVE 2 TWO-LANE SECTION



View Over the Hill With Cut Slopes



View Over the Hill With Retaining Walls



**Existing View of SH 7
From Westview Looking East**

PHOTO SIMULATION OF ALTERNATIVE 2 TWO-LANE SECTION



View Over the Hill With Cut Slopes



View Over the Hill With Retaining Walls

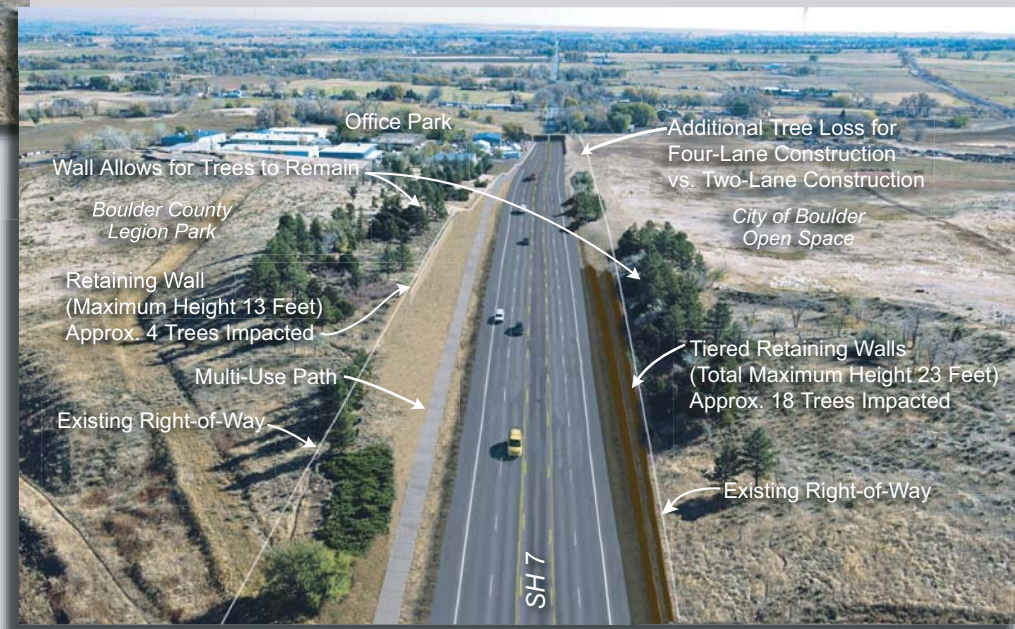


**Existing View of SH 7
Looking West**

PHOTO SIMULATION OF ALTERNATIVE 3 (PREFERRED) FOUR-LANE SECTION



View Over the Hill With Cut Slopes



View Over the Hill With Retaining Walls



**Existing View of SH 7
From Westview Looking East**

PHOTO SIMULATION OF ALTERNATIVE 3 (PREFERRED) FOUR-LANE SECTION



View Over the Hill With Cut Slopes



View Over the Hill With Retaining Walls



**Existing View of SH 7
Looking West**

PHOTO SIMULATION OF ALTERNATIVE 3 (PREFERRED) FOUR-LANE SECTION



View Over the Hill With Cut Slopes



View Over the Hill With Retaining Walls



**Existing View of SH 7
From Westview Looking East**

Railroad Evaluation Criteria Matrix

State Highway 7 Environmental Assessment DRAFT Railroad Alternatives Evaluation Summary 11/5/2004

Issues	Railroad Alternatives		
	Alt. 1	Alt. 2	Alt. 3
	No Action	Re-build on Existing Alignment	Realign Tracks East
Transportation Issues			
Highway Safety	Poor	Good	Good
Community Issues			
Right-of-Way Impacts	0 Parcels	0 Parcels	2-3 Parcels Temp. Emt.
Environmental Issues			
Wetlands	0 Acres	0.03 Ac Jurisd. 0.16 Ac Non-Jurisd.	0.03 Ac Jurisd. 0.16 Ac Non-Jurisd.
Noise	0 Receptors Impacted	0 Receptors Impacted	1 Receptor Impacted
Historic Resources	0 Properties	0-1 Property	1-2 Property
Section 4(f)	0 Properties	0-1 Property	1-2 Property
Endangered Species	None	None	None
Wildlife	None	Minimal	Minimal
Construction Issues			
Cost	\$0 M	\$2.8 M*	\$2.1 M*
Compatible with Viable Roadway Construction	Not Compatible	Compatible	Compatible
Constructability	No Construction	More Difficult to Construct	Less Difficult to Construct
Overall Rating		Fair	Preferred

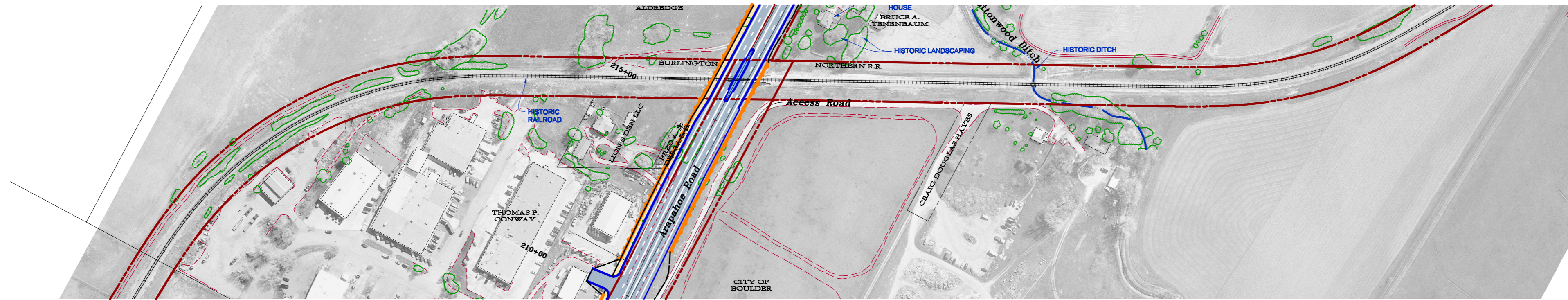
*Preliminary Estimates (For Comparative Purposes)

STATE HIGHWAY 7 POSSIBLE IMPROVEMENT OPTIONS

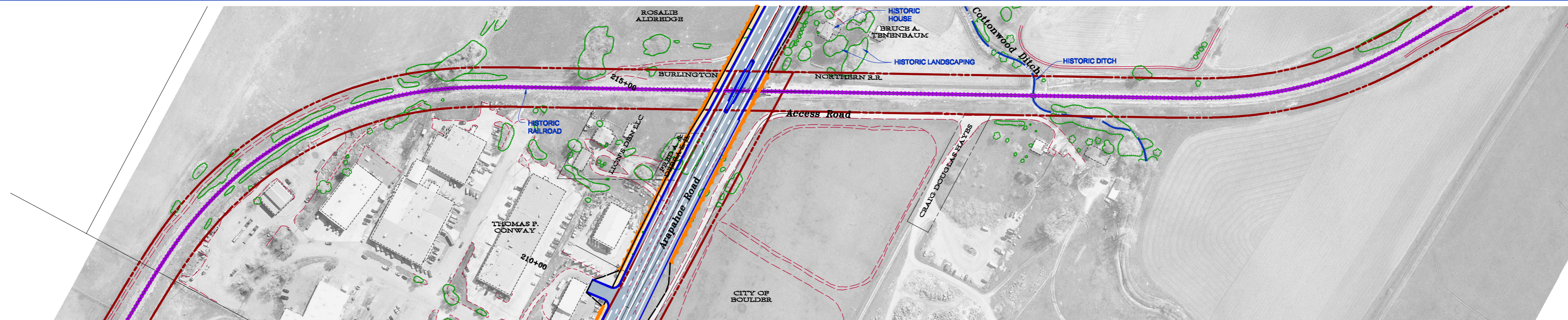
BURLINGTON NORTHERN RAILROAD

Legend

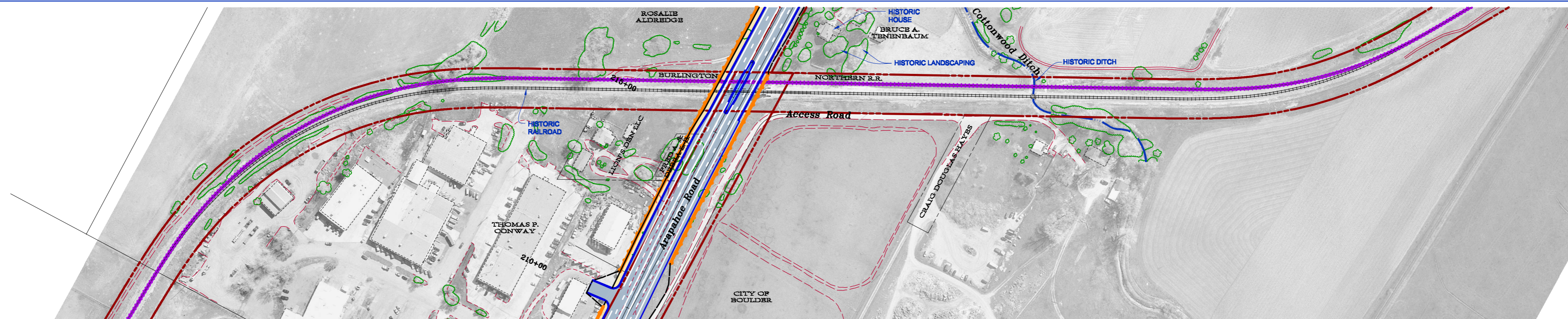
- RIGHT-OF-WAY
- - - EXISTING EDGE OF PAVEMENT
- EXISTING DITCH
- - - PROPOSED IMPROVEMENTS
- PROPOSED CURB AND GUTTER
- - - PROPOSED LANE STRIPING
- SIDEWALK/ TRAIL



OPTION R-1
NO BUILD



OPTION R-2
REBUILD EXISTING TRACK ALIGNMENT



OPTION R-3
REALIGN TRACKS EAST OF EXISTING LOCATION

NAME: P:\01-021-06 SH 7 EA\dwg\selected alternatives\BOARD-RR.dwg DATE: NOV 09, 2004 TIME: 11:31 AM