

Welcome to the State Highway 7 Environmental Assessment Study Open House

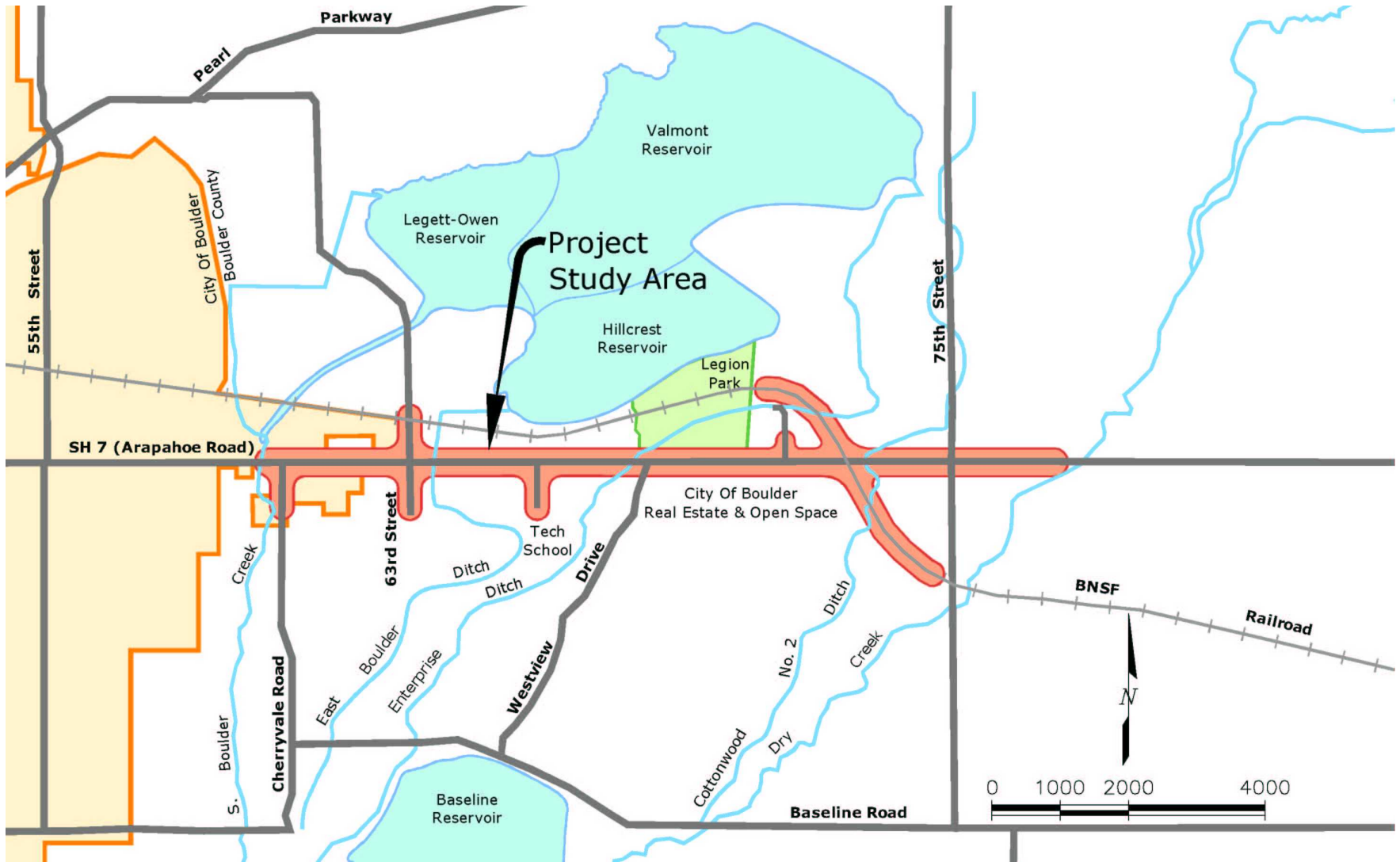
Purpose of the Open House

- Ø Introduce the Project Team and Purpose for the Study
- Ø Describe the National Environmental Policy Act (NEPA) Process
- Ø Share Potential Environmental Impacts and Identify Critical Issues and Constraints
- Ø Present Alternatives to be Analyzed in the Environmental Assessment Including the Preferred
- Ø Solicit Public Feedback on Selected Alternatives
- Ø Outline “What’s Next” in the Process

Project Location and Study Area

SH 7

Cherryvale Rd. to 75th St.



Project Purpose and Need

The purpose of the project is to:

- Serve the population and employment growth in the surrounding communities
- Improve traffic operational efficiency
- Improve safety conditions



- Upgrade outdated transportation facilities
- Improve mobility for multiple modes of transportation (pedestrian, bicycle, transit)

The following deficiencies and problems identify the need to develop solutions to the SH 7 transportation system:

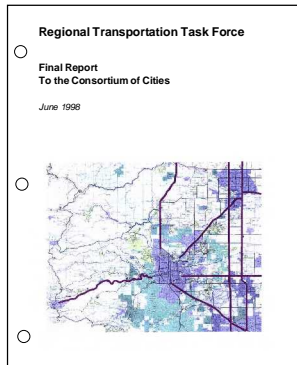
- CDOT and local jurisdictions have identified SH 7 is an important commuter and intra-regional arterial roadway.
- Traffic volumes are expected to increase 48% between 2001 and 2025 due to regional growth.
- There is insufficient capacity to meet current and future projected traffic volumes along the corridor.



- SH 7 is currently experiencing poor operating traffic conditions in the peak hours resulting in delays and long queues at signalized intersections. Future traffic growth is expected to increase these delays and queues.
- Accident history indicates congestion and access issues based upon the high percentage of intersection related crashes.
- There is a lack of adequate pedestrian, bicycle and bus stop facilities along the corridor.
- Driveway locations are poorly controlled and located.
- The out-dated highway does not meet the current standards and needs for this classification of roadway.
- Bus service along the corridor is adversely impacted by poorly operating traffic conditions, leading to delay.
- Future population and employment growth serving the communities of Lafayette, Louisville, Erie and Boulder result in increased commuter roadway needs.



Summary of Previous Work

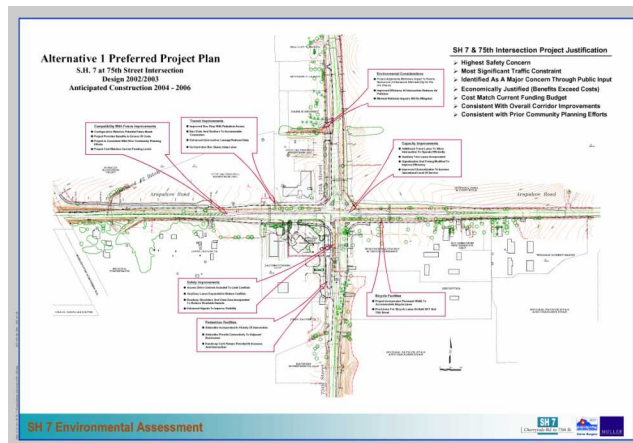


Regional Transportation Task Force Final Report (1998)

The Boulder County Regional Transportation Task Force completed a study in 1998, which evaluated the increasing traffic congestion along six major regional corridors, including SH 7. The Final Report recommended intersection and transit improvements to SH 7.

SH 7 Improvement Assessment Study (2002)

CDOT initiated a feasibility study in 2001 to evaluate improvement alternatives to SH 7 between Cherryvale Road and 75th Street. The study, completed in March 2002, identified an improvement project to be designed and constructed at the 75th intersection and also identified conceptual improvements to the remainder of the corridor.



SH 7 & 75th Intersection Improvements (2003-2004)

Following the recommendations of the *SH 7 Improvement Assessment Study*, CDOT has undertaken the design of improvements to the SH 7 and 75th Street Intersection. CDOT is completing the design and anticipates construction to begin in the Spring of 2005 on these comprehensive, multi-modal improvements to the intersection of SH 7 and 75th Street.

East Arapahoe Transportation Network Plan (2004)

The City of Boulder developed a network plan for Arapahoe Road (SH 7) in 2004 that defines transportation improvements for all modes of travel. The plan identified proposed multi-use paths and sidewalks, on-street bike lanes and transit improvements for SH 7 east of Cherryvale Road.

