

CHOOSE YOUR MOVE



XPRESS

October 2013

CONTACT US

HOTLINE:
303-404-7042

WEBSITE:
www.us36expresslanes.com

To receive email updates during the project, click on the cell phone icon in the upper right corner. You can then subscribe to a variety of lists including "US 36 Express Lanes Project."

EMAIL:
info@us36expresslanes.com

MOBILE WEBSITE:
m.us36expresslanes.com



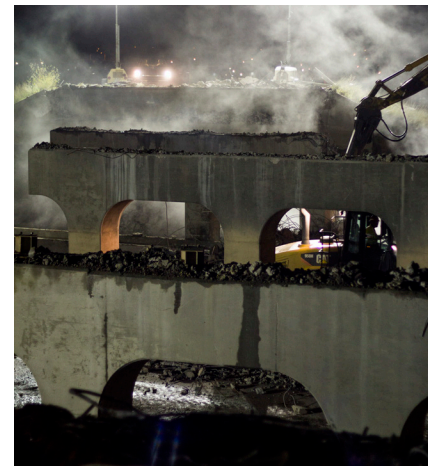
Heavy equipment working in tandem to demolish the Olde Wadsworth bridge.

DOWN WITH THE OLD, UP WITH THE NEW

The demolition of the 112th Avenue/Olde Wadsworth bridge began on Friday, Sept. 20 and required two overnight closures of east and westbound US 36 from Church Ranch Boulevard to Wadsworth Parkway.

Built in 1951, it took construction crews 26 hours to tear down the 62-year-old structure using excavators and loaders with demolition attachments. As the first of the old major bridges on the US 36 Project to be demolished, crews were able to recycle approximately 100,000 pounds of steel and hope to do the same on the other major bridges. The bridge is being replaced with the new Uptown Avenue bridge, scheduled to open on Oct. 15. "Our first bridge demolition brings us one step closer to completing one of the biggest elements of this project

– the construction of all of the new bridges," said Project Director Mark Gosselin. "It is a very visible milestone, and one that we are excited to reach."



Exposed bridge girders

WADSWORTH PARKWAY BRIDGE DEMOLITION

The Wadsworth Parkway bridge is scheduled to be demolished Oct. 11-14, requiring nightly closures of east and westbound US 36 under the bridge. Traffic will use the US 36 on- and off-ramps at Wadsworth Parkway as the detour. All traffic will be on the newly constructed Wadsworth Parkway prior to the demolition with all access ramps fully operational.

FALL SCHEDULE

- Demolition of the Wadsworth Parkway bridge
- Continue eastbound US 36 concrete pavement
- Continue construction on the Sheridan Boulevard bridge
- Align east and westbound traffic from East Flatiron Crossing Drive to 88th Street
- Remove existing and install new noise walls on eastbound US 36 between Sheridan and Federal Boulevard
- Realign Wadsworth Parkway traffic on to new roadway
- Complete new road and intersection for Uptown Avenue bridge connection to 112th Avenue
- Complete Promenade Drive and West Flatiron Crossing Drive bridge widenings



Roadway preparations for concrete placement

SAFETY WEEK 2013

Creating a Safety Culture

The Ames Granite Joint Venture celebrated a week of safety, Aug. 26-30, on the US 36 Express Lanes Project. The week-long event took place after a 100 percent incident-free week on the project. Highlights of the week included:

- Monday, Aug. 26 – Safety Culture Workshop to educate the team on making the workplace injury and incident free.
- Tuesday, Aug. 27 – Launched the “First Move Forward Campaign,” which educated crews on the value of training to ensure that the team has the necessary knowledge and skills to work injury and incident free.
- Wednesday, Aug. 28 – On-the-Job Safety Training for quality, safe, clean and orderly work areas.
- Thursday, Aug. 29 – Specific safety skills for working around overhead and underground utilities.



Ames Granite crew members at the celebration barbeque

The week concluded with a Safety Leaders celebration barbeque for all the crews and project team to celebrate a safe week and everyone’s hard work.

US 36 EXPRESS LANES PROJECT VANPOOLING

Do you know what your commute costs are?
Vanpooling can save you an average of \$800/month!

	*Driving Alone	Vanpooling
Annual	\$10,374	\$982
Monthly	\$865	\$82

As part of the US 36 Express Lanes Project, 36 Commuting Solutions has made forming a vanpool easier than ever. If you can coordinate just one other rider to start with you, 36 Commuting Solutions will cover the cost of the remaining seats for up to three months!

Or, for individuals wanting to join existing vanpools, we will provide \$160 toward the first three months of your participation.

To learn more, email info@36commutingsolutions.org or call 303-604-4383.

*Includes costs of car payments, fuel, insurance, maintenance, depreciation, license/registration fees and other misc. costs (Source: AAA)
Average costs based on 15,000 annual miles for driving 5-passenger vanpool in Denver region.

