

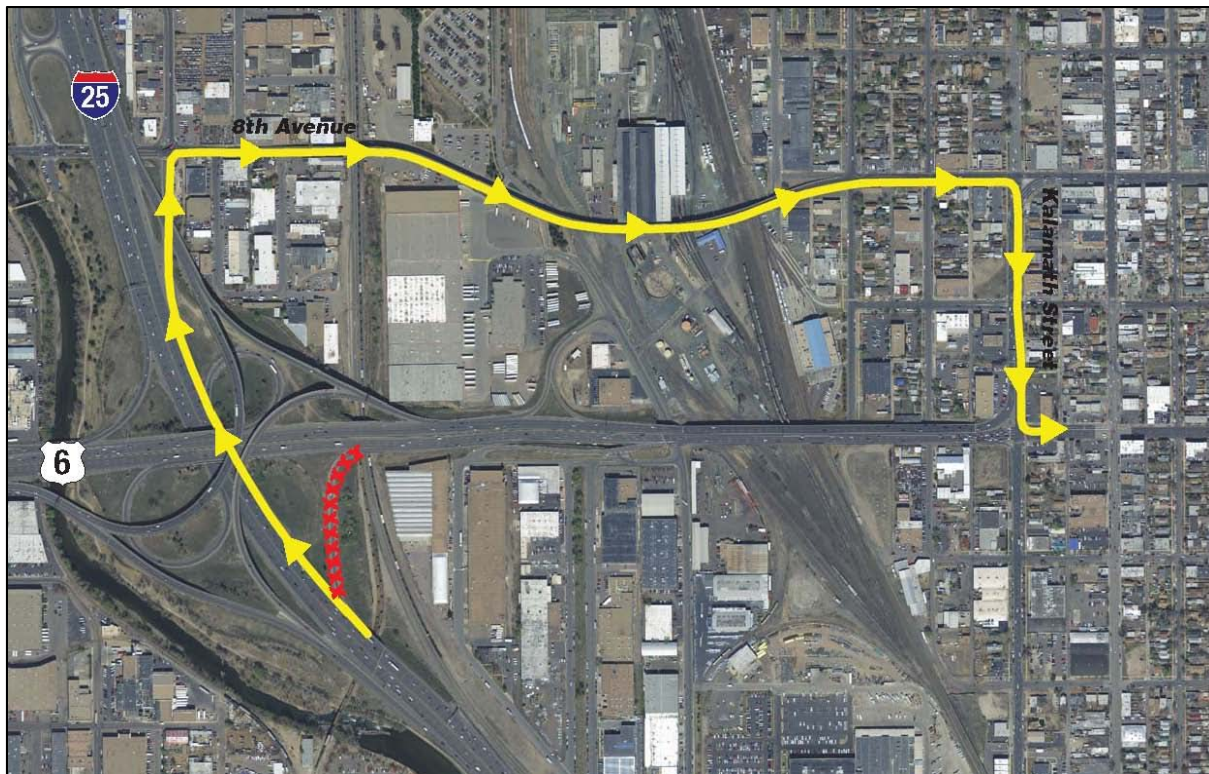
## Northbound I-25 Off-ramp to Eastbound US 6 Closes Feb. 17

**What:** The northbound I-25 off-ramp to eastbound US 6 will close for reconstruction. The Osage off-ramp from eastbound US 6 will remain open.

**When:** This off-ramp will close after US 6 reopens and it will remain closed for about six months.

**Why:** Crews will be rebuilding the ramp and the bridge over the BNSF Railroad tracks.

**Detour:** Northbound I-25 motorists should continue to 8<sup>th</sup> Avenue and go east on 8<sup>th</sup> Avenue to Kalamath Street and south on Kalamath Street to US 6 (see map below).



*The US 6 Bridges Design-Build Project involves improvements along 6<sup>th</sup> Avenue from approximately Knox Court on the west through the BNSF railroad track bridge just east of I-25. The project, which was part of the I-25 Valley Highway FEIS completed in 2006, includes building new bridges over Bryant Street, the South Platte River, BNSF railroad tracks, I-25, and over US 6 at Federal Boulevard and Knox Court, as well as improvements to Barnum Parks and a realigned off-ramp from northbound I-25 to westbound US 6. Substantial project completion is planned for August 2015.*