

New Federal on-ramp to EB US 6 to open the morning of Feb. 4

What

Crews are completing the diamond interchange at Federal Boulevard and US 6 by adding an on-ramp to eastbound US 6 from Federal Boulevard.

When

Beginning at 7 p.m. on Tuesday, Feb. 3, with the new ramp open by 5:30 a.m. on Wednesday, Feb. 4.

Why

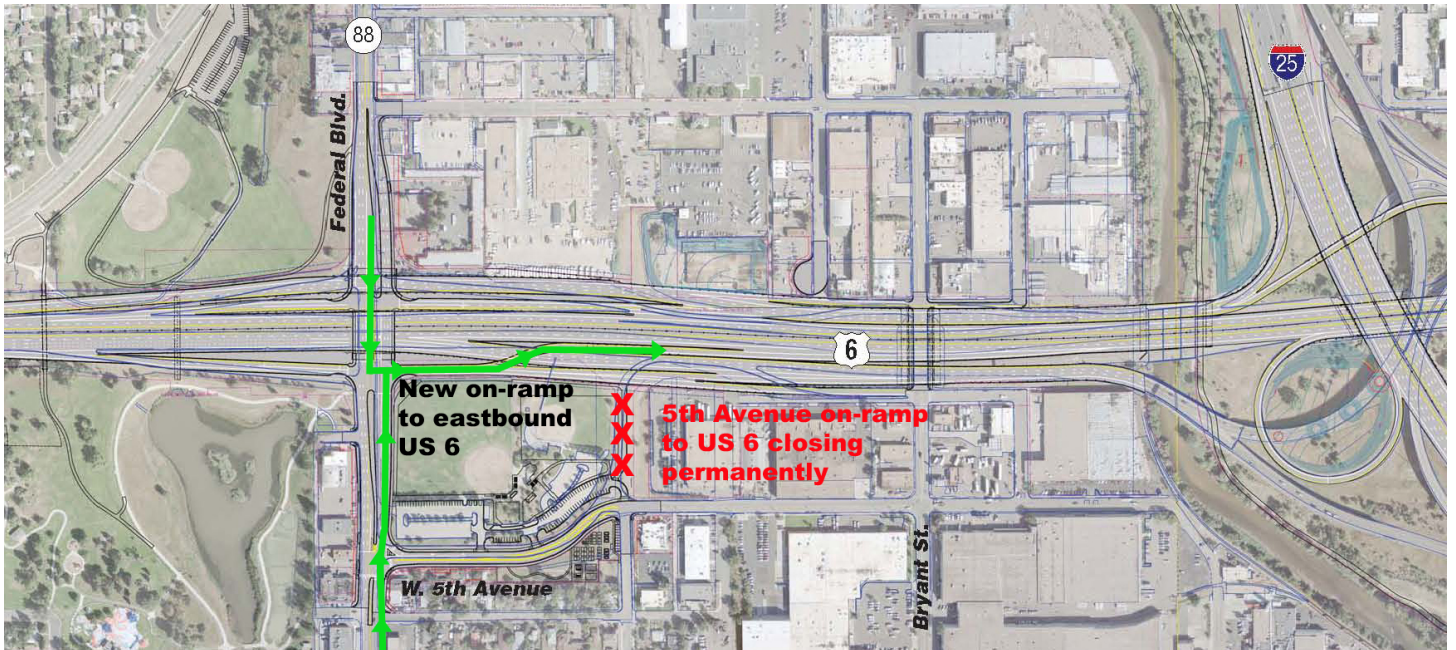
This major project milestone will provide drivers with direct access to eastbound US 6 from Federal Boulevard, eliminating the need to use 5th Avenue. Closing the on-ramp from 5th Avenue will allow crews to finish work on the east side of Barnum Park.

Details

- Crews are completing the diamond interchange at Federal Boulevard and US 6 by adding an on-ramp to eastbound US 6 from Federal Boulevard.
- The new ramp from Federal replaces the old 5th Avenue on-ramp to eastbound US 6, which will permanently close the evening of Tuesday, Feb. 3.
- The new Federal on-ramp to eastbound US 6 opens by 5:30 a.m. on Wednesday, Feb. 4.
- While crews shift traffic overnight, there will be no access to eastbound US 6 from Federal or 5th Avenue.
- While the new ramp will eventually improve safety by increasing the distance between Federal Boulevard traffic merging onto US 6 and US 6 traffic exiting at I-25, those improvements won't be in full effect for several months, after the completion of additional bridges and paving operations.
- Beginning the morning of Wednesday, Feb. 4, drivers looking to access eastbound US 6 will need to take Federal to the traffic signal just south of the Federal bridge over US 6, which will now feature a 4-way intersection.
 - Drivers can then turn east at the signal and either merge onto eastbound US 6, or continue to northbound or southbound I-25. See the graphic on the next page, showcasing the location and alignment of the new ramp.
- Closing the 5th Avenue on-ramp to eastbound US 6 frees up room for crews to complete a significant amount of additional work, including continuing improvements to Barnum East Park, as well as paving and other activities on the south half of US 6 between Federal and Bryant Street.
- The old 5th Avenue on-ramp has been in place for more than 50 years and made for an undesirable merge area for traffic accessing eastbound US 6.

Traffic impacts

- **Federal Boulevard traffic looking to access eastbound US 6 overnight:** Drivers should use Alameda, 8th or Colfax avenues to travel east to downtown or to access It 25 while there is no access to eastbound US 6 from Federal or 5th Avenue from 7 p.m. Tuesday until 5:30 a.m. Wednesday.
- **Bryant Street traffic looking to access eastbound US 6 once the new ramp opens:** Drivers should take 5th Avenue west to Federal Boulevard, and take Federal Boulevard north, staying in the right lane, to turn right onto the new ramp for eastbound US 6.



Northbound Federal Boulevard traffic will turn right and southbound Federal Boulevard traffic will turn left at the signal to access this new ramp.