



## Southbound I-25 to westbound US 6 ramp shift requires Federal off-ramp access limitations

### What

Crews will shift southbound I-25 to westbound US 6 traffic onto the new, permanent off-ramp alignment. This new ramp connects to westbound US 6 more than 1,000 feet further west than the current off-ramp does, making it very close to Federal Boulevard (see Figure 1 on next page). The close proximity between the merge point of this ramp with Federal Boulevard could create merge conflicts between drivers trying to get onto westbound US 6 with those trying to exit at Federal Boulevard. As a result, northbound I-25 motorists and westbound US 6 drivers coming out of downtown Denver will not be able to access the westbound US 6 off-ramp to Federal Boulevard for approximately two months (see Figure 2 on next page). **Those exiting southbound I-25 onto westbound US 6 will still be able to exit at Federal Boulevard.**

### When

Tuesday, Dec. 2, beginning at 10 p.m. Full access to the ramp will reopen after about two months.

### Why

As shown in Figure 1 on the next page, the existing southbound I-25 to westbound US 6 ramp alignment cuts right through the work zone required to build the new ramp connecting northbound I-25 with westbound US 6. Moving traffic onto the new, permanent off-ramp alignment clears the way for crews to complete the new northbound I-25 off-ramp to westbound US 6.

### Details

- Crews will close the southbound I-25 to westbound US 6 off-ramp overnight on Tuesday, Dec. 2, in order to complete this ramp shift. The ramp will be closed between the hours of 10 p.m. and 5 a.m., at which point it will reopen in its new configuration. Motorists should take Colfax Avenue, 8<sup>th</sup> Avenue or Alameda Avenue to detour west around this closure.
- Crews will also close the Federal Boulevard on-ramp to westbound US 6 between the hours of 10 p.m. and 5 a.m. on Monday, Dec. 1, Tuesday, Dec. 2, and Wednesday, Dec. 3 for drainage line installation. Motorists should take Alameda Avenue or Colfax Avenue west to Sheridan Boulevard, then take Sheridan Boulevard to the on-ramp to westbound US 6.
- If crews were to maintain access for travelers from northbound I-25 and west out of downtown Denver, the new distance to exit at Federal Boulevard would be reduced by more than 1,000 feet – a significant reduction that could pose a safety risk considering the speed and volume of traffic in this busy interchange.
- After this two-month stretch of work, all US 6 traffic will be shifted further north to allow room to complete the south half of the new roadway configuration near the I-25 interchange.

### Detours

While access is restricted to Federal Boulevard, motorists should follow these detours:

- **Northbound I-25** motorists should continue north to 8<sup>th</sup> Avenue, then take 8<sup>th</sup> Avenue west to access Federal Boulevard.
- **Westbound US 6** motorists coming out of downtown should take Kalamath Street to 8<sup>th</sup> Avenue or Alameda Avenue, then go west to access Federal Boulevard.

Figure 1:

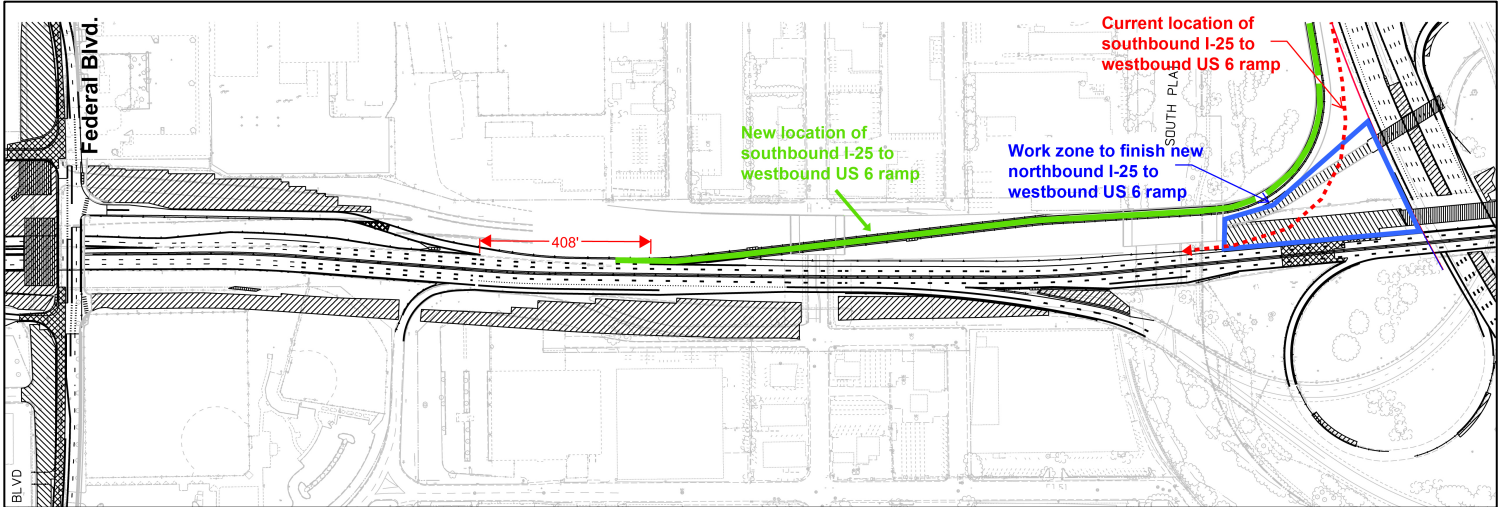


Figure 2:

