

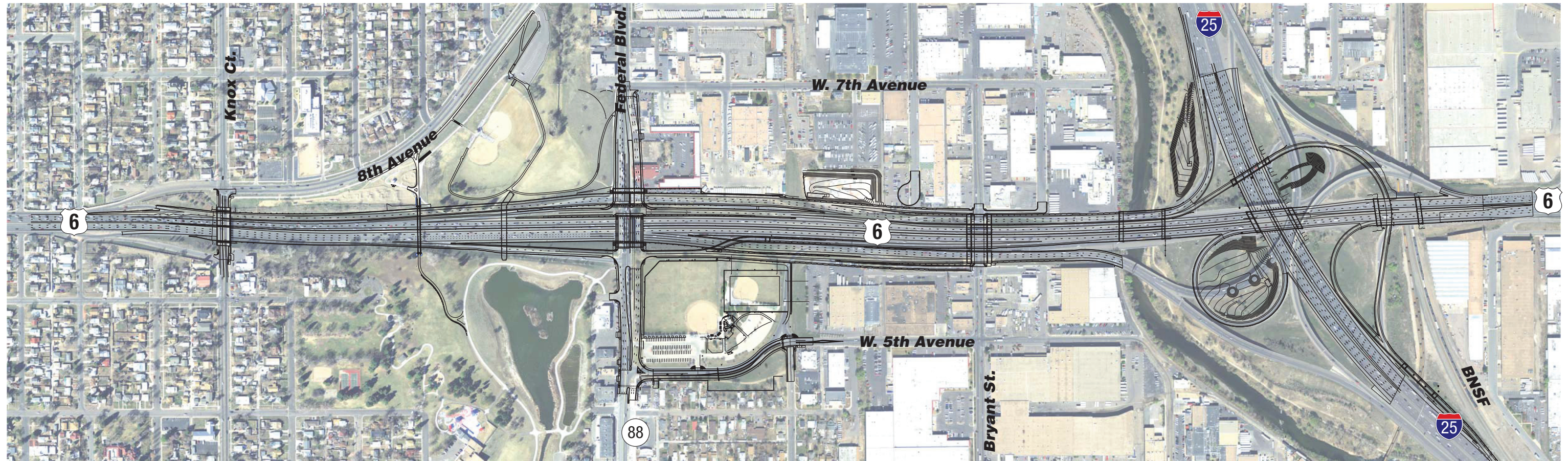


PROJECT OVERVIEW

- Maximize use of available funds to improve traffic operations and safety on US 6 and the US 6 / I-25 Interchange, and provide needed improvements to the Barnum Park complex.
- US 6 improvements from Knox Court on the west to the BNSF tracks east of I-25.
- Barnum Park North, South and East improvements.
- Project includes replacing six bridges that are in poor condition or functionally obsolete and constructing six new bridges, including a new pedestrian bridge over US 6 connecting Barnum Park North and South.
- Park construction scheduled to begin January 2014, with completion of all Park's work by April 2015.
- Roadway construction scheduled to begin February 2014, with project completion by Fall 2015.



CDOT US 6 Bridges Design Build Project



PROPOSED CONSTRUCTION SCHEDULE

	2013					2014					2015					2016													
	M	J	J	A	S	O	N	D	J	F	M	A	M	J	J	A	S	O	N	D	J	F	M	A	M	J	J		
US 6 / I-25 CONSTRUCTION																													
	No Impacts to Traffic					Phase 1					Phase 2					No Impacts to Traffic													
Begin Roadway Construction						●	02.01.2014																						
US 6 / I-25 Interchange Complete																				◆	01.31.2015								
Project Completion																												◆	08.31.2015
CITY & COUNTY of DENVER PUBLIC WORKS																													
Denver Waterline Complete																			◆	10.15.2014									
Federal Boulevard Complete																											◆	04.30.2015	
CITY & COUNTY of DENVER PARKS																													
Begin Barnum Park Construction						●	01.2014																						
Barnum Park North Re-opened																			◆	04.2014									
Pedestrian Bridge Complete																												spring.2015	
Barnum Park N, S, and E Complete																											◆	04.01.2015	

- Key Start Up
- ◆ Key completion





Ways You Can Stay Informed

There are various ways you can stay informed during the design and construction of this project. Information resources at your disposal include:

- **Project Website**

www.coloradodot.info/projects/US6Bridges

- **Project Information Hotline**

720-881-5540

- **Project Email**

US6bridgesinfo@cig-pr.com

- **Comment Forms**

Fill out one of our comment forms tonight and leave it with a project representative.

- **Written Information Materials**

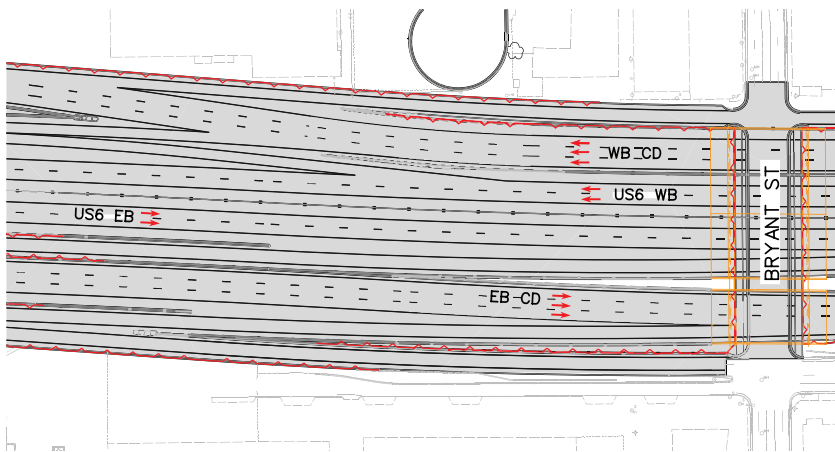
Pick up any of our printed information sheets for more details on the project.

- **Project Presentations**

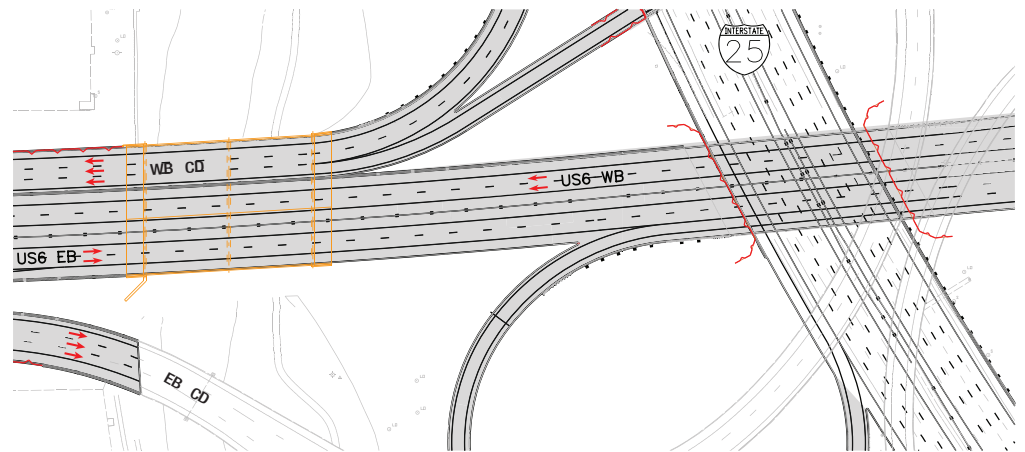
Contact a project representative about speaking to your home owners' association, community organization, business or other group.



Existing Bryant Street Weaves Eliminated



Eastbound US6

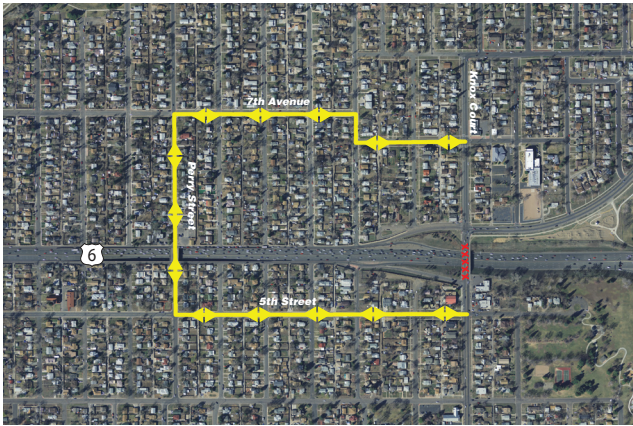


Westbound US6

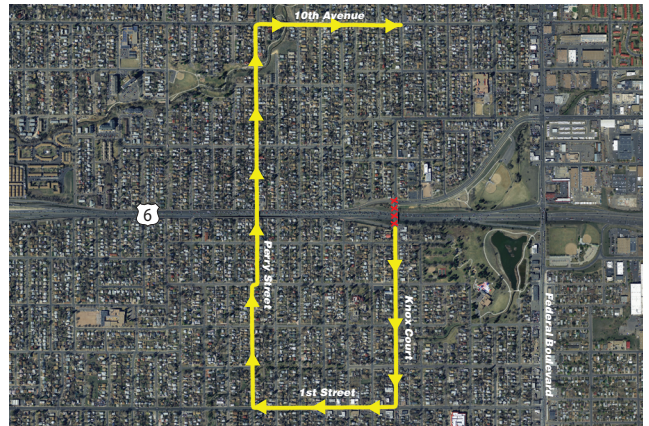


Knox Court Construction Detours

**DETOUR ROUTE -
KNOX COURT BRIDGE - BICYCLE**



**DETOUR ROUTE -
KNOX COURT BRIDGE - SOUTH TO NORTH**



**DETOUR ROUTE -
KNOX COURT BRIDGE - PEDESTRIAN**



**DETOUR ROUTE -
KNOX COURT BRIDGE - NORTH TO SOUTH**



**DETOUR ROUTE -
EASTBOUND FRONTAGE ROAD TO US 6 RAMP**



LEGEND

- XXXXX** = Closed Ramp
- = Detour Route



Platte River Trail

Detour Route

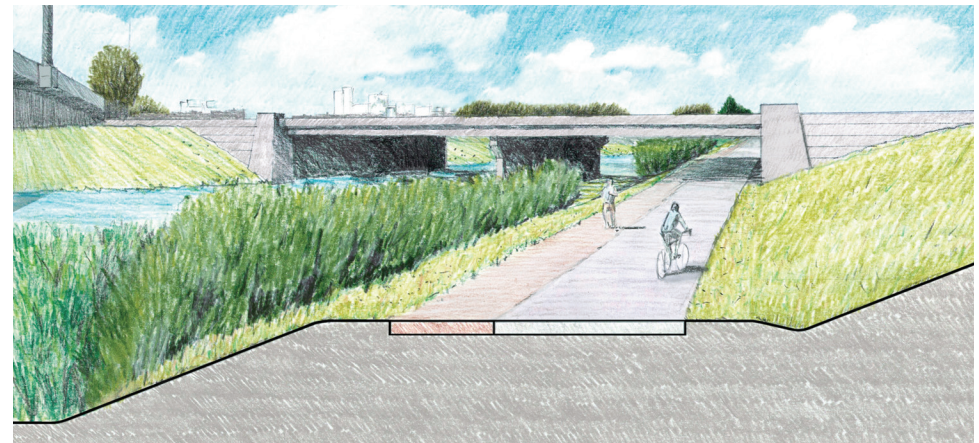


LEGEND

- - - - - = Platte River Trail
- XXXXX = Trail Closure
- ⇄ = Detour Route

During construction of the new Platte River Bridge, short-term closures of the trail will be needed to maintain public safety, such as:

- Demolition of the existing bridge (nighttime trail closure)
- Erection of the new bridge girders (nighttime trail closure)
- Placement of bridge deck concrete over the trail



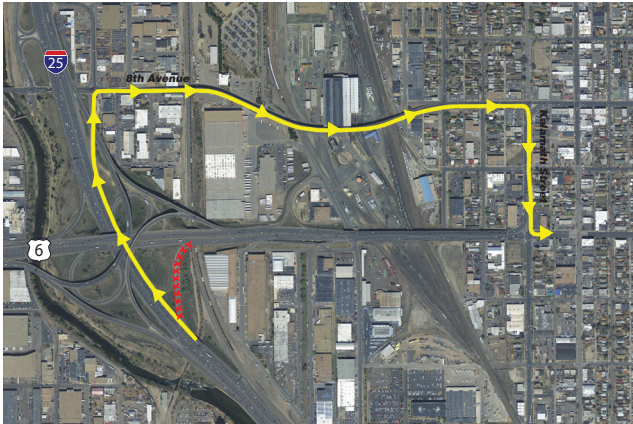
The Platte River Trail is being reconstructed as part of the US 6 project to provide an improved alignment and trail features. This work, occurring in 2015, will required closure of the existing trail for a period of 6 weeks while the trail reconstruction occurs.





I-25 Ramp Construction Detours

DETOUR ROUTE - NORTHBOUND I-25 TO EASTBOUND US 6 RAMP



DETOUR ROUTE - SOUTHBOUND I-25 LOOP RAMP TO EASTBOUND US 6



Bryant Street Construction Detours

DETOUR ROUTE - WESTBOUND BRYANT STREET RAMP TO US 6



DETOUR ROUTE - EASTBOUND US 6 RAMP TO BRYANT STREET



LEGEND

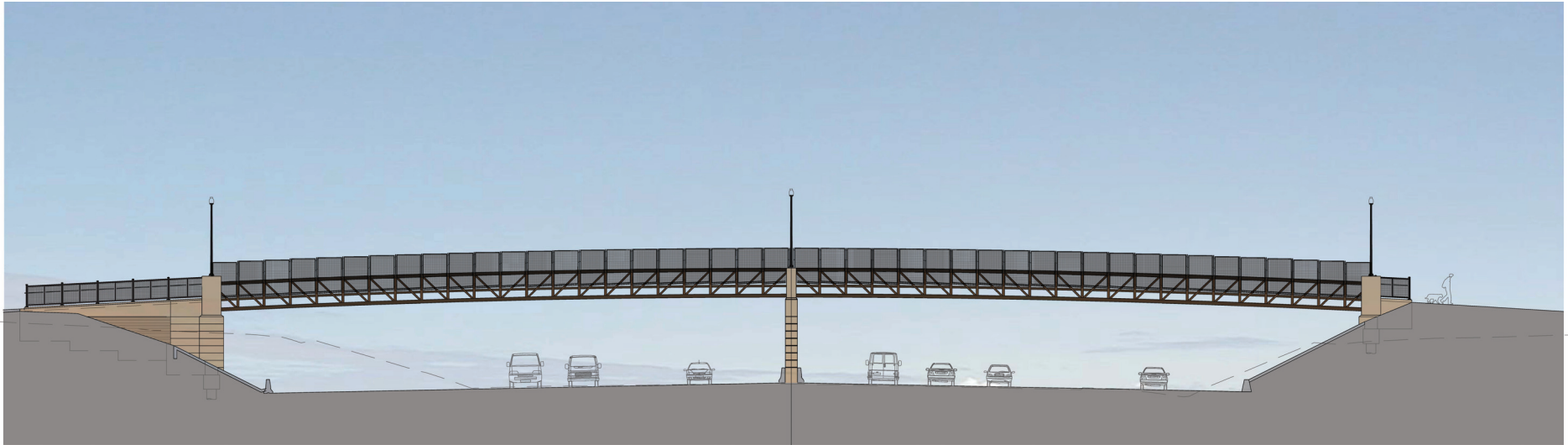
- XXXXX** = Closed Ramp
- Yellow arrows** = Detour Route
- Orange arrows** = Secondary Detour Route



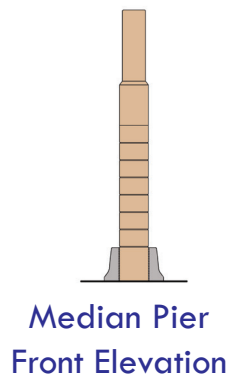
BARNUM PARK NORTH-SOUTH



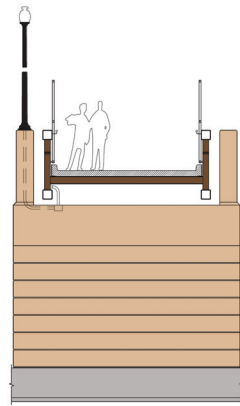
BARNUM PARK PEDESTRIAN BRIDGE



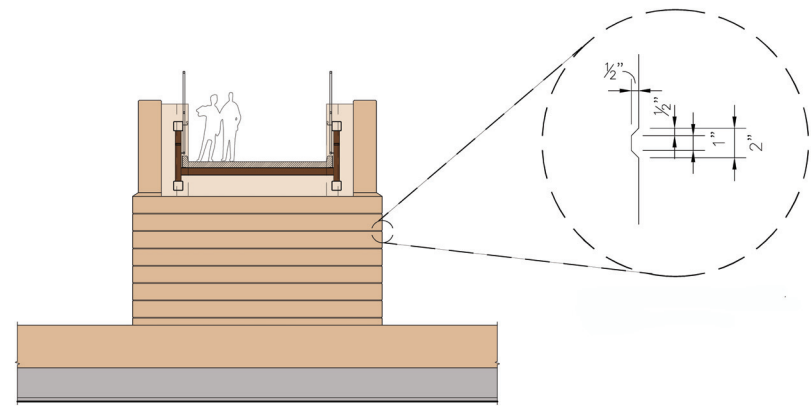
Pedestrian Bridge Elevation
(Looking East)



Median Pier
Front Elevation



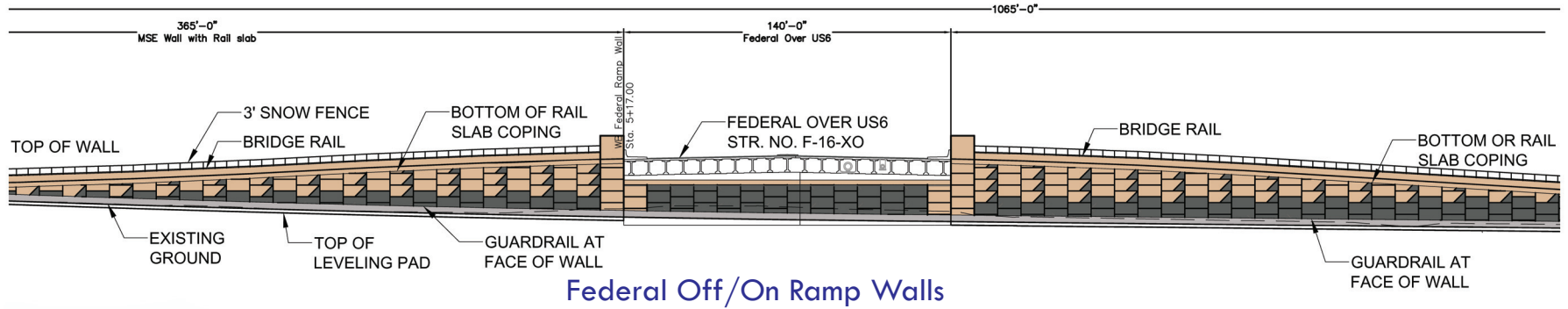
Median Pier
Side Elevation



North Abutment Elevation



US 6 RETAINING WALL ARCHITECTURAL TREATMENTS



Wall Pattern

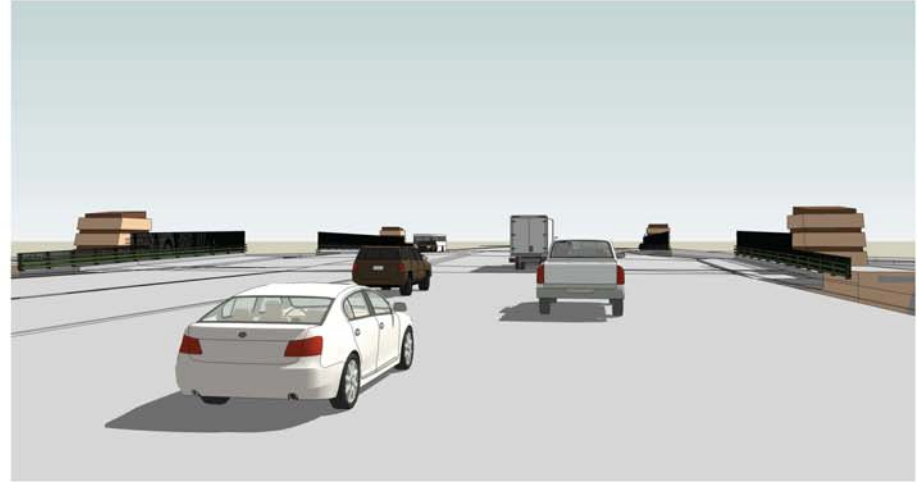


FEDERAL BRIDGE

View of Federal Bridge Looking East



View South along Federal Boulevard Crossing US 6



View of Federal Bridge Looking Eastbound from US 6



Aerial View of Federal Bridge Crossing US 6 Looking NE



I-25 BRIDGE LOOKING NORTH





Westbound Lowell/Perry Ramp Closure

Permanent closure of the westbound exit ramp from US 6 to Lowell Boulevard/Perry Street is being considered by CDOT and the City and County of Denver.

The safety benefits that could be achieved by this closure include:

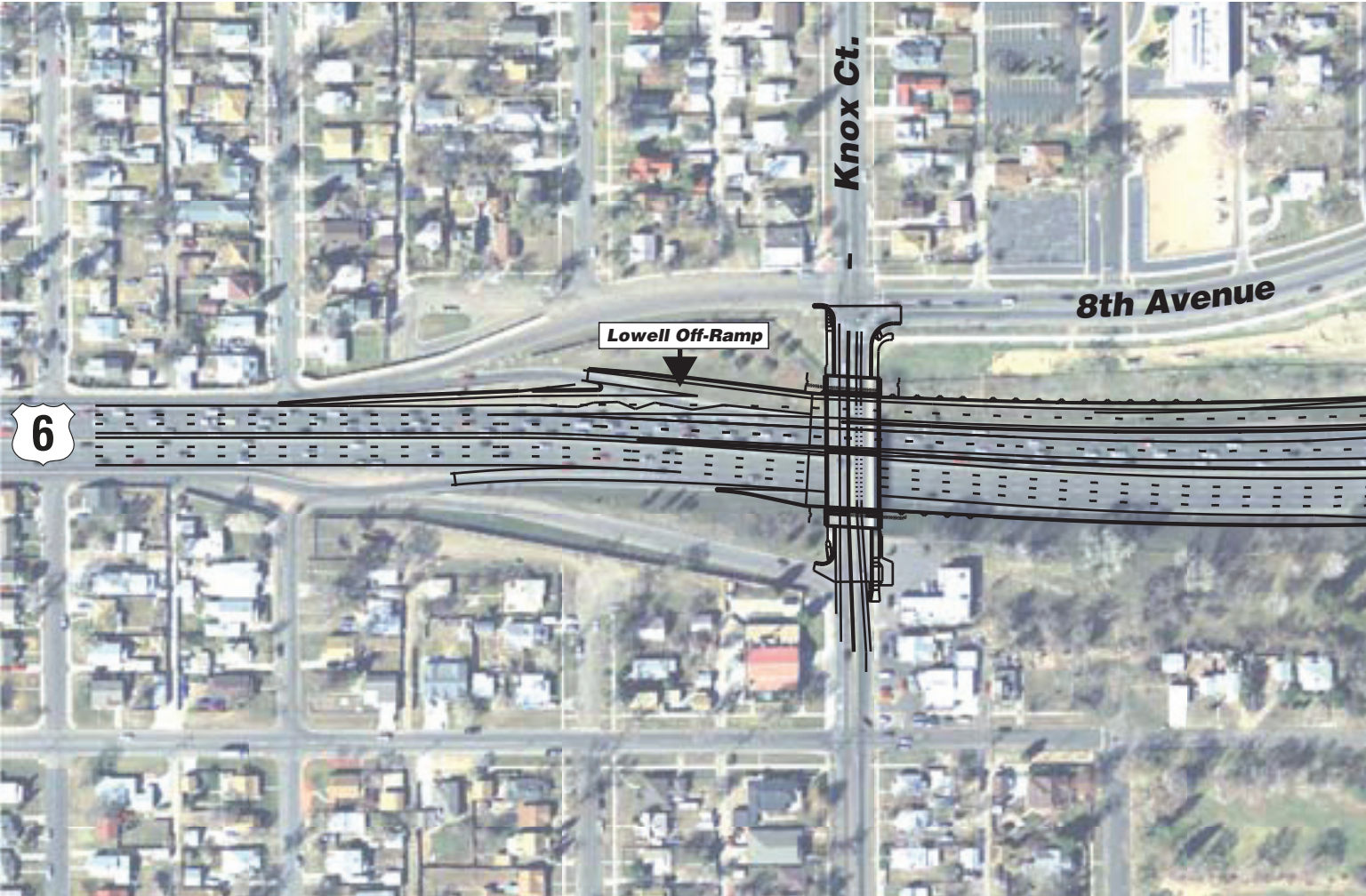
- Improved traffic safety along US 6 by eliminating a closely spaced interchange ramp.
- Reduction in higher-speed traffic along the frontage road, which runs immediately adjacent to private homes.
- An improved connection from the westbound CD Road to westbound mainline US 6.
- Smoother traffic flow along the CD Road as drivers don't need to maneuver to exit at Lowell/Perry.

Potential impacts include:

- Drivers seeking local access from US 6 to neighborhoods from the ramp will be diverted.
- Increased traffic at Federal and Sheridan Interchanges.



Existing Westbound Lowell/Perry Ramp



If the Westbound Lowell/Perry Ramp Closes - How do I get home?

