

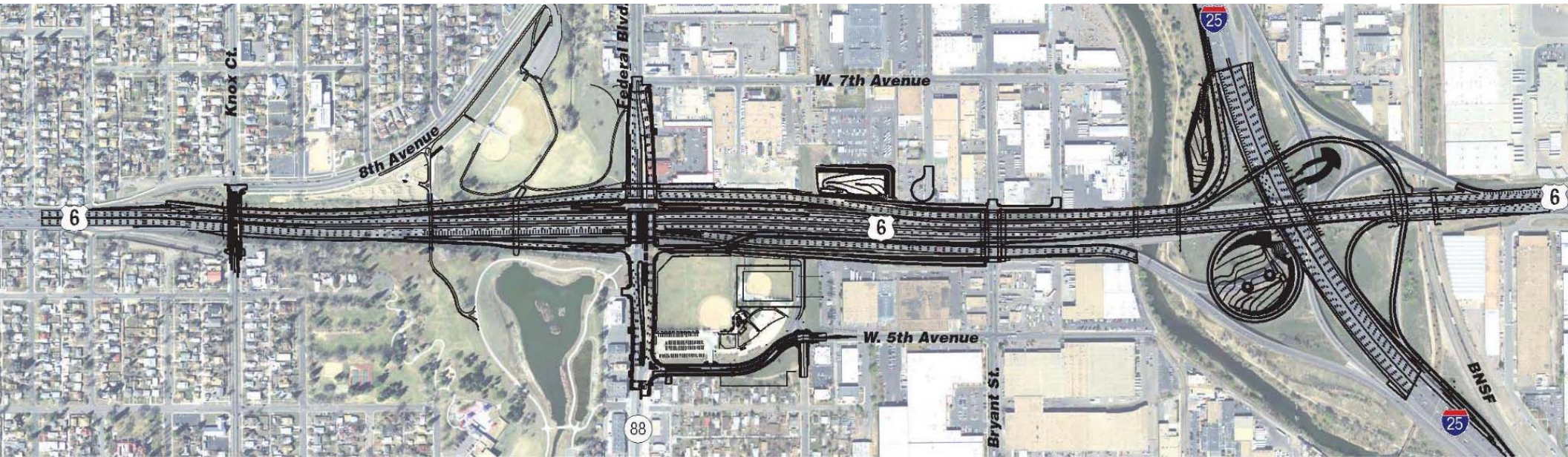


**US 6 Bridges
Design-Build
Project**

Project Description & Overview

January 15, 2014 Public Meeting

Project boundaries



US 6 Bridges Design-Build Project
Jan. 15, 2014



Overview of project

- **Replacing six existing bridges**
- **New ramps to improve traffic flow between I-25 and 6th Avenue**
- **Safer traffic movements between 6th Avenue and Bryant Street**
- **Federal Boulevard bridge reconstruction and widening**
- **New waterline construction**
- **Barnum Park improvements**
- **Building pedestrian bridge to connect Barnum North and South**



US 6 Bridges Design-Build Project
Jan. 15, 2014



Project team

Ownership team



Contracting team



US 6 Bridges Design-Build Project
Jan. 15, 2014



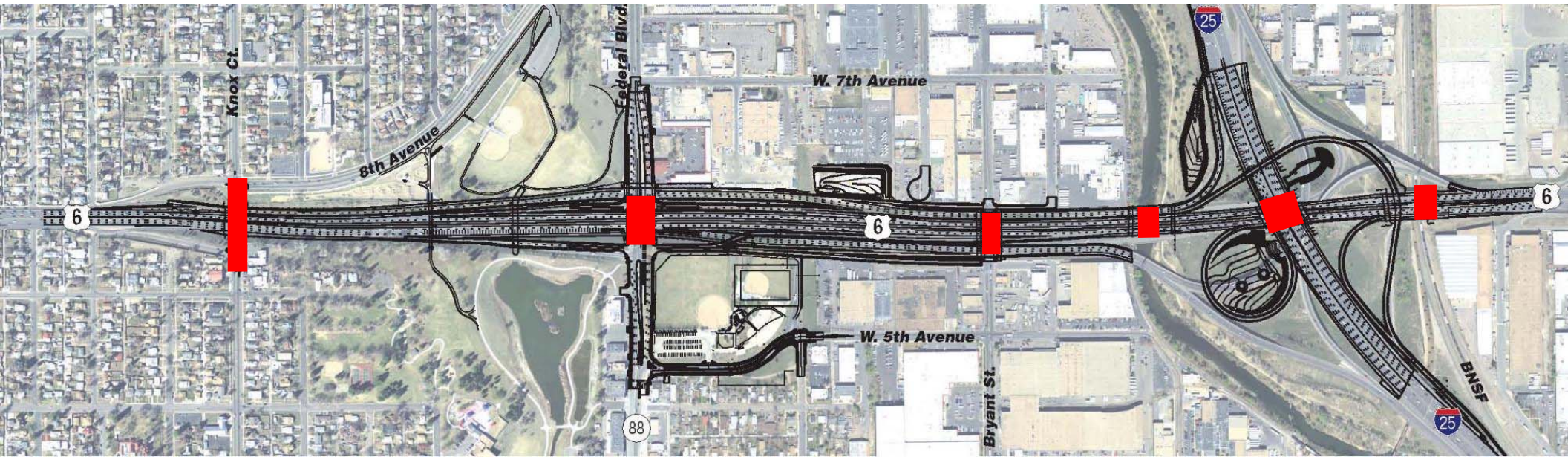
Purpose of project

- **Enhance driver safety by eliminating traffic weave movements**
- **Improve traffic flow between I-25 and US 6**
- **Replace old and obsolete bridge structures**
- **Improve park facilities and connect neighborhoods on the north and south sides of US 6**

Project schedule overview

- **Beginning 5th Avenue work this week**
- **Starting major road work in early February**
- **Barnum North and South work to be done in spring 2014**
- **Barnum Park East work and pedestrian bridge over US 6 to be done in spring 2015**
- **Project completion scheduled for fall 2015**

Bridge replacements



US 6 Bridges Design-Build Project
Jan. 15, 2014



Federal Boulevard bridge

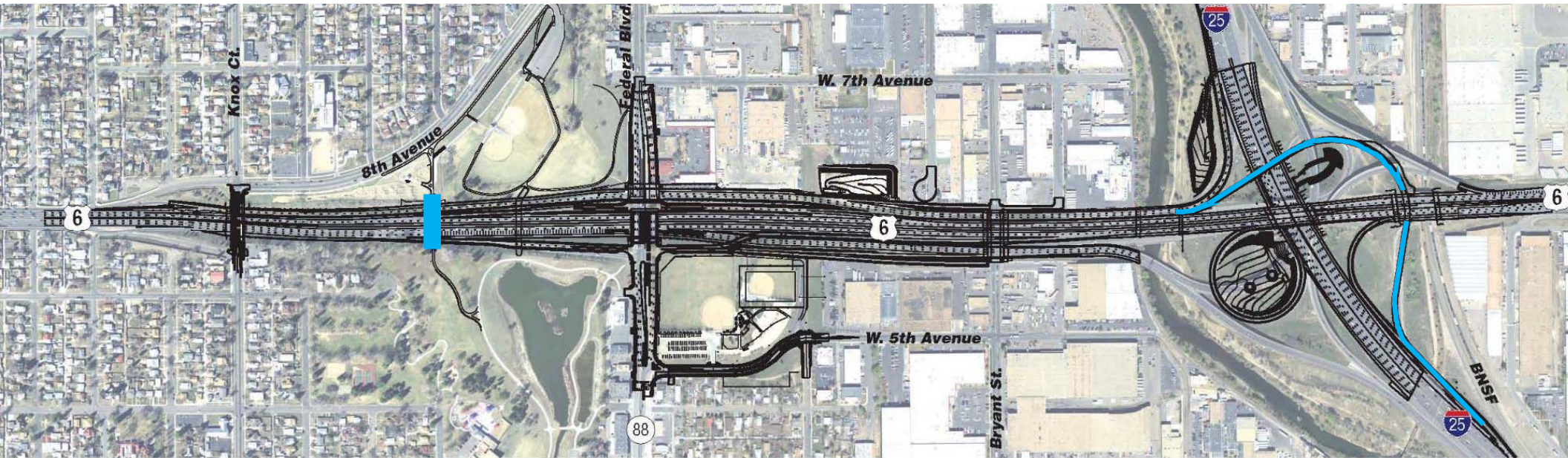
Aerial View of Federal Bridge Crossing US 6 Looking NE



View of Federal Bridge Looking East



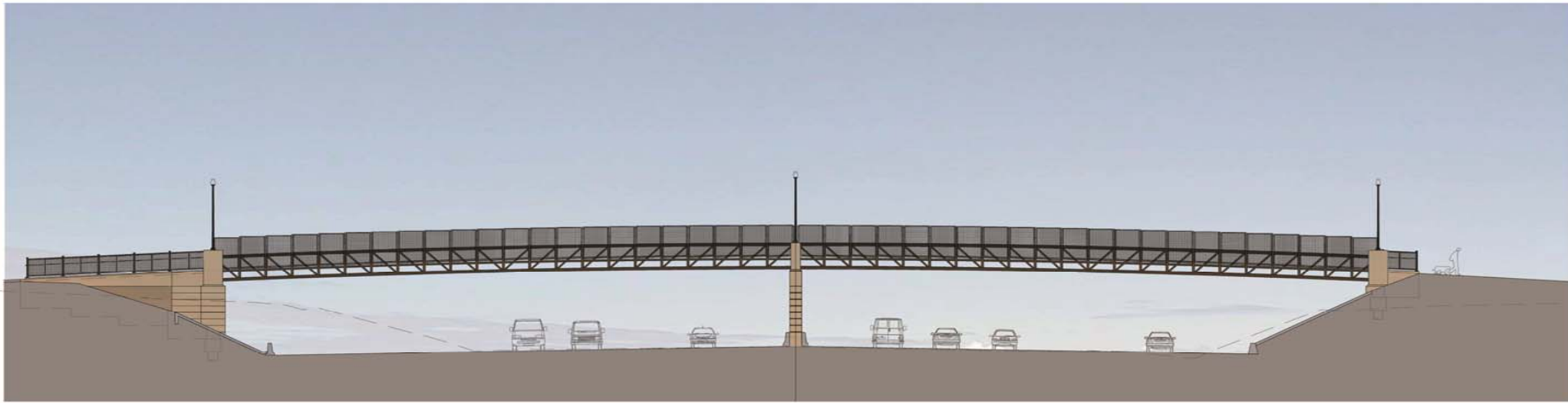
New pedestrian bridge and off-ramp alignment



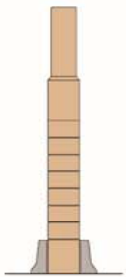
US 6 Bridges Design-Build Project
Jan. 15, 2014



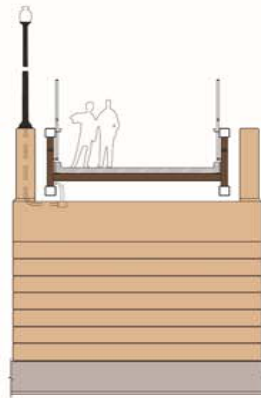
New pedestrian bridge



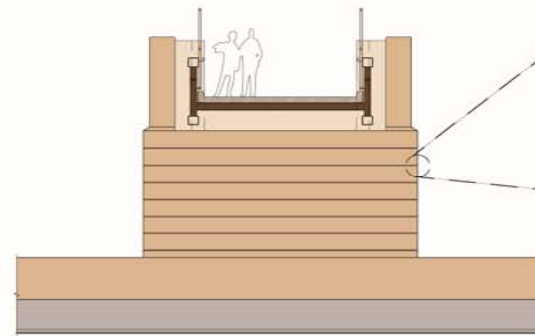
Pedestrian Bridge Elevation
(Looking East)



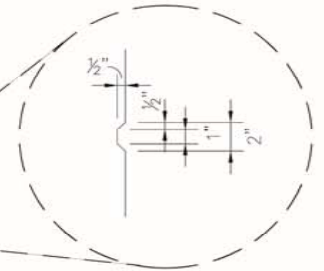
Median Pier
Front Elevation



Median Pier
Side Elevation



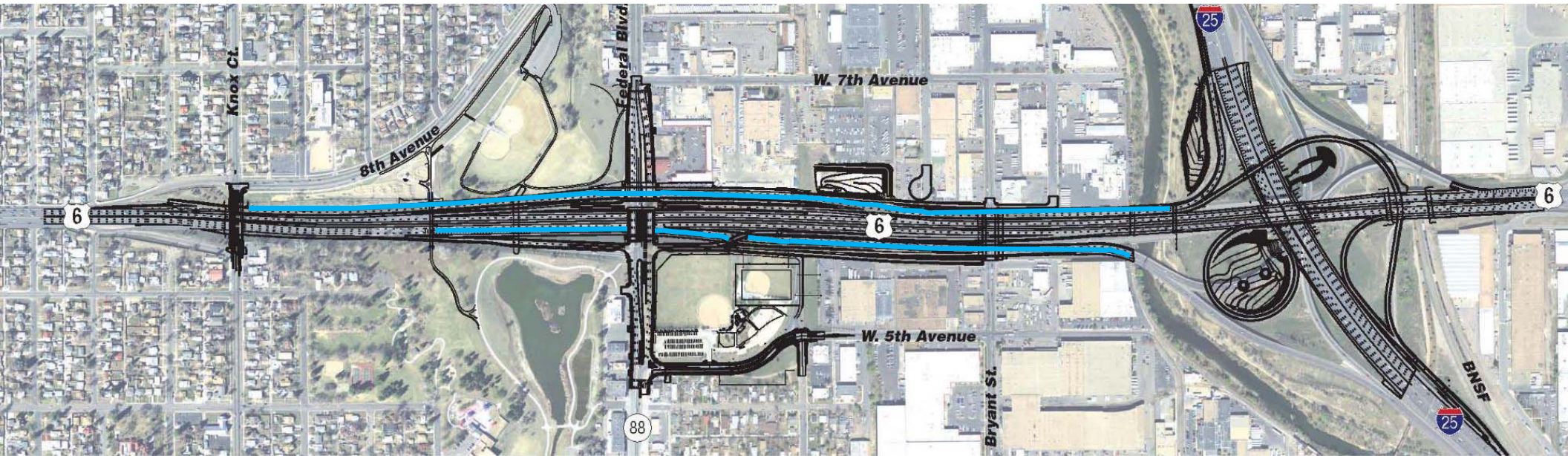
North Abutment Elevation



Collector-distributor (CD) roads

- **Barrier-separated roadway along the outside of US 6 to provide access to Bryant Street and Federal Boulevard**
- **Improves safety by minimizing traffic weave movements and separates 6th Avenue through traffic from vehicles coming from either direction of I-25**

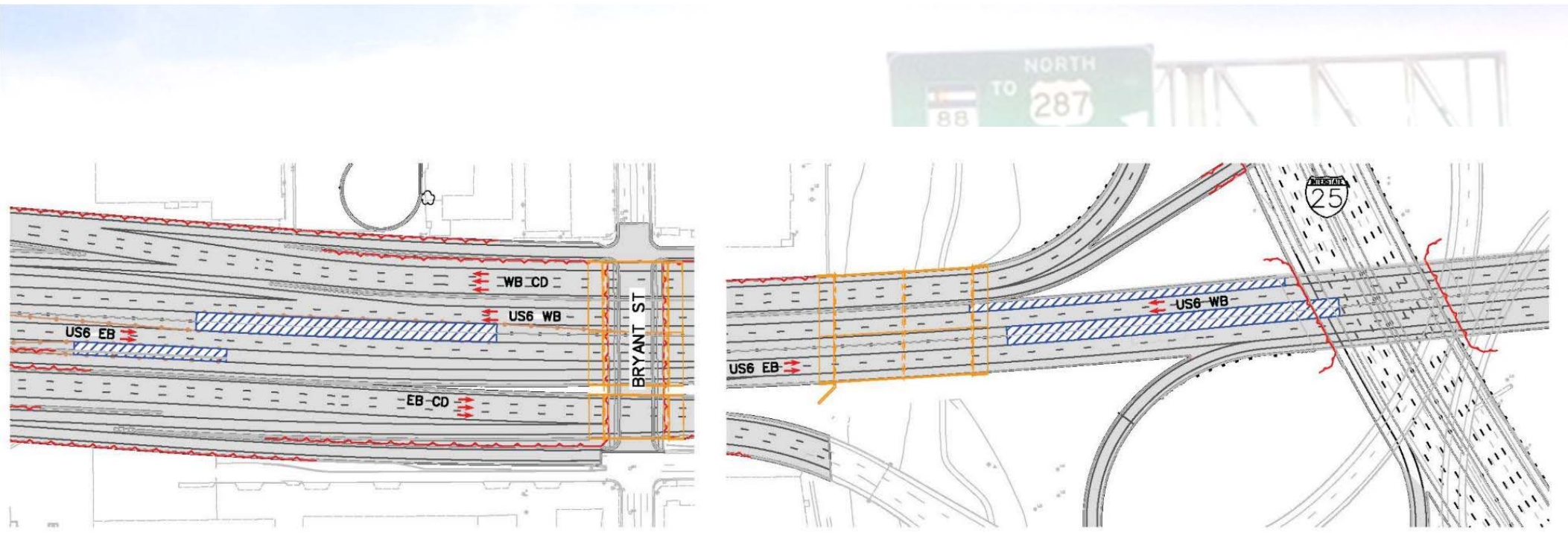
Alignment of CD roads



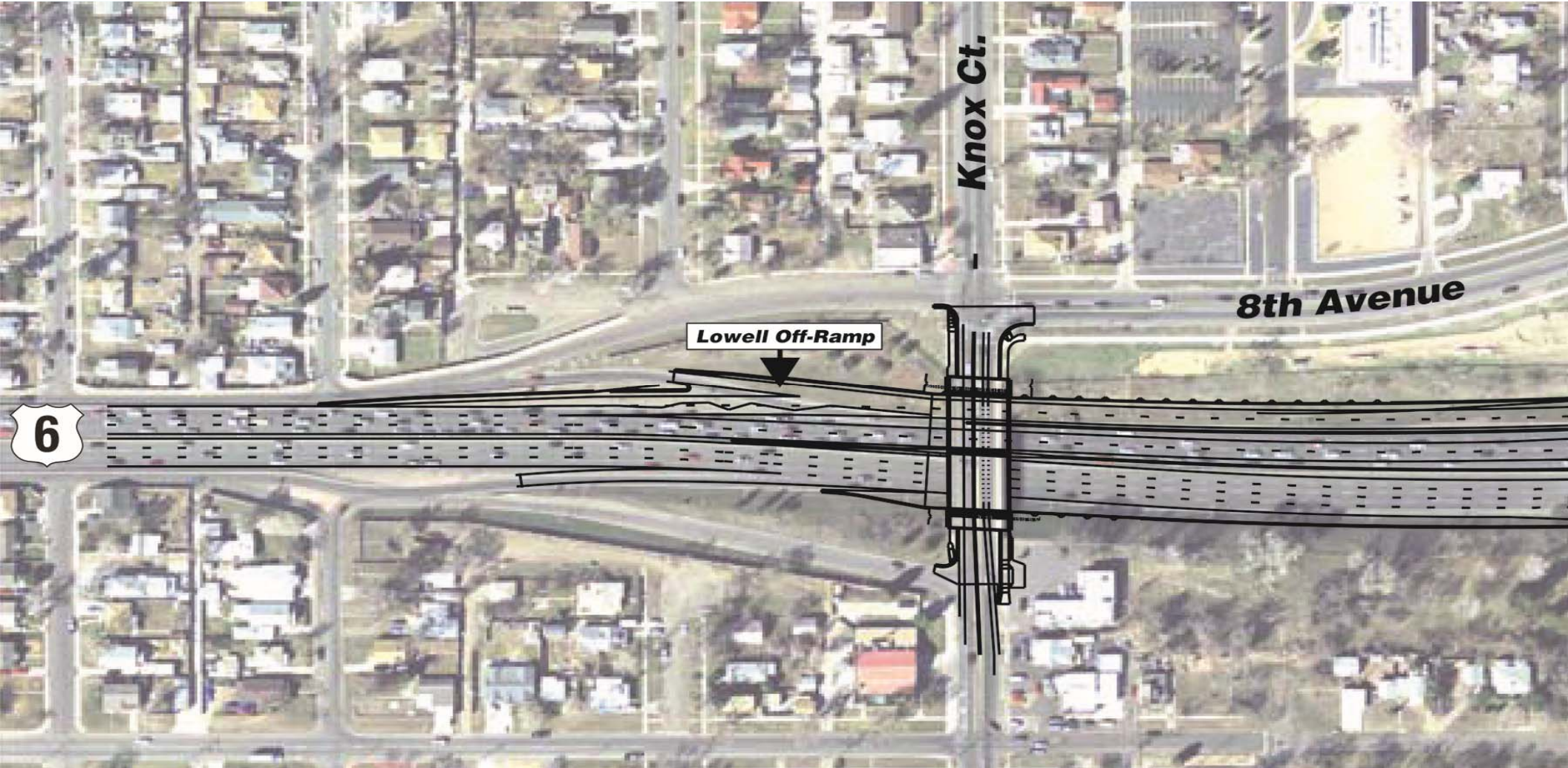
US 6 Bridges Design-Build Project
Jan. 15, 2014



Eliminating Bryant Street traffic weave



Lowell/Perry off-ramp from westbound US 6



Initial roadwork weekend of Feb. 7

- **Demolition of Knox Court bridge over US 6**
- **Demolition of east portion of Federal Boulevard bridge**
- **Removal of center median barrier and signs and placement of temporary barrier on US 6**
- **Relocation of overhead power line near the Platte River**
- **Closures of all Bryant Street on and off-ramps to start work on collector-distributor road**



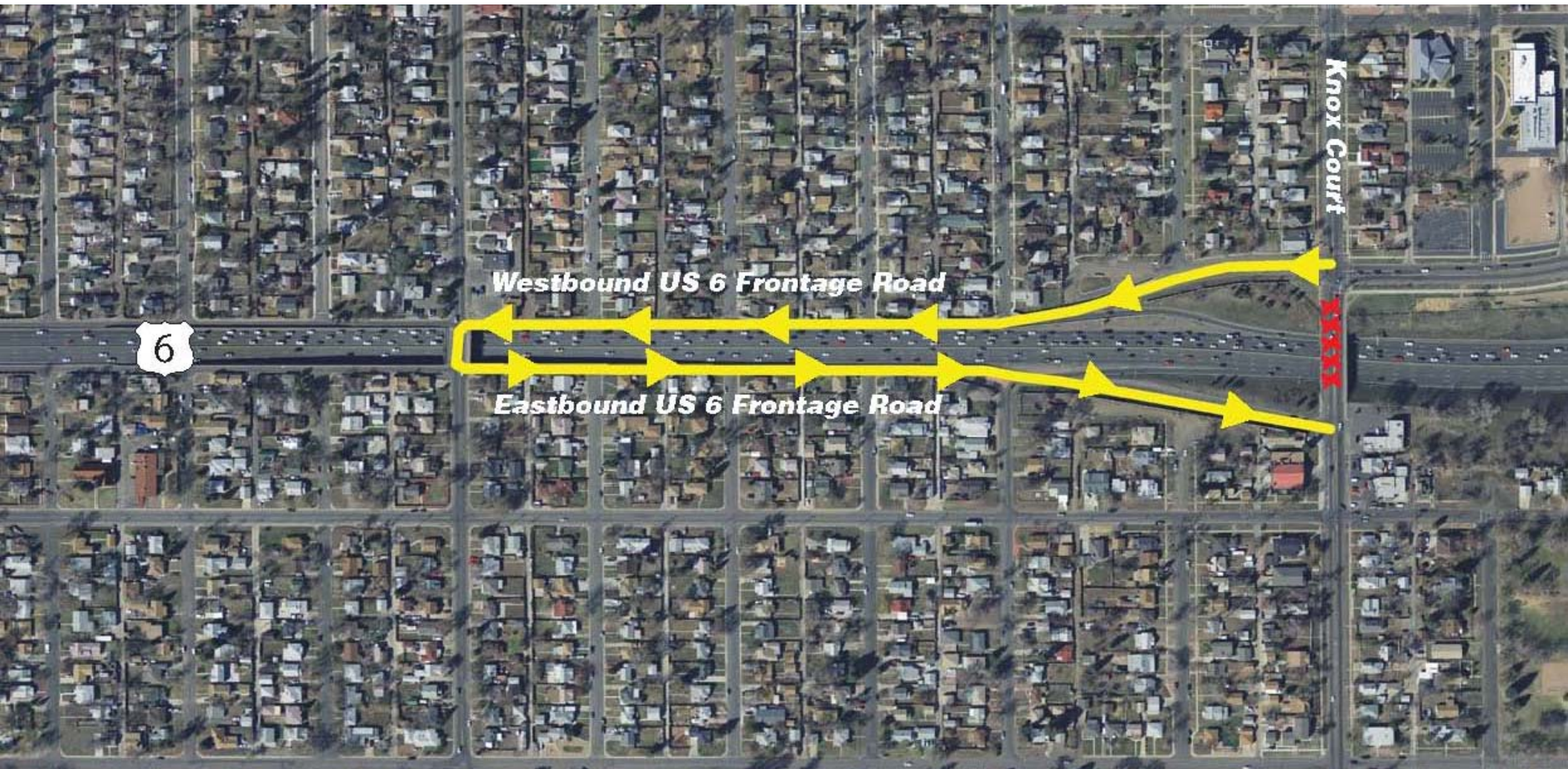
US 6 Bridges Design-Build Project
Jan. 15, 2014



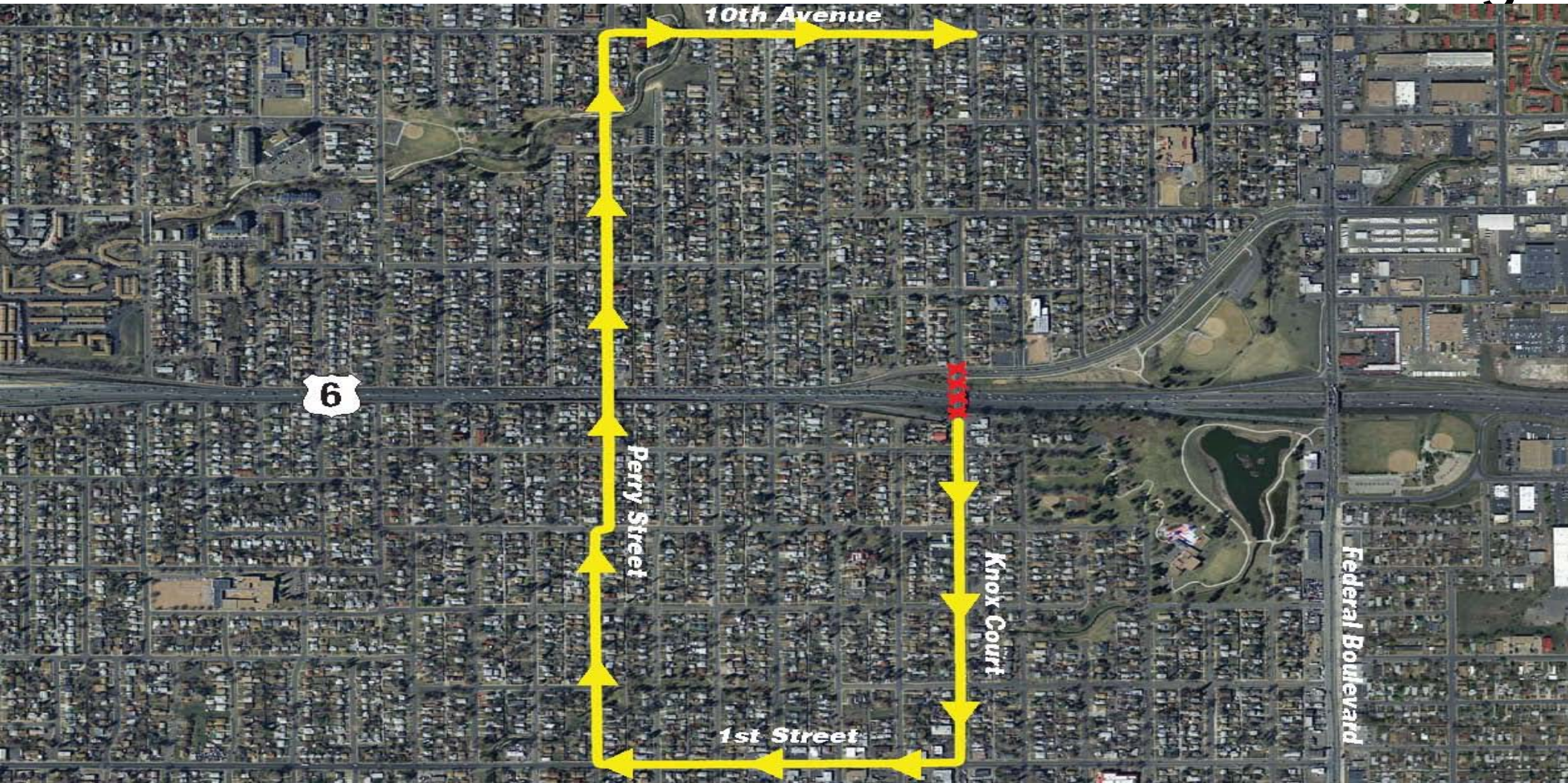
Upcoming traffic impacts

- **Full weekend closure of US 6 between Sheridan and I-25**
 - **Friday, Feb. 7 at 9 p.m. through Monday, Feb. 10 at 5 a.m.**
 - **Regional through traffic use C-470, US 285 and I-70**
 - **Local traffic use Colfax and Alameda**
- **Knox Court bridge and Lowell on-ramp to eastbound US 6 closed for about three months for bridge reconstruction**
- **Bryant Street ramps closed for about 1 year with improved access when they re-open**

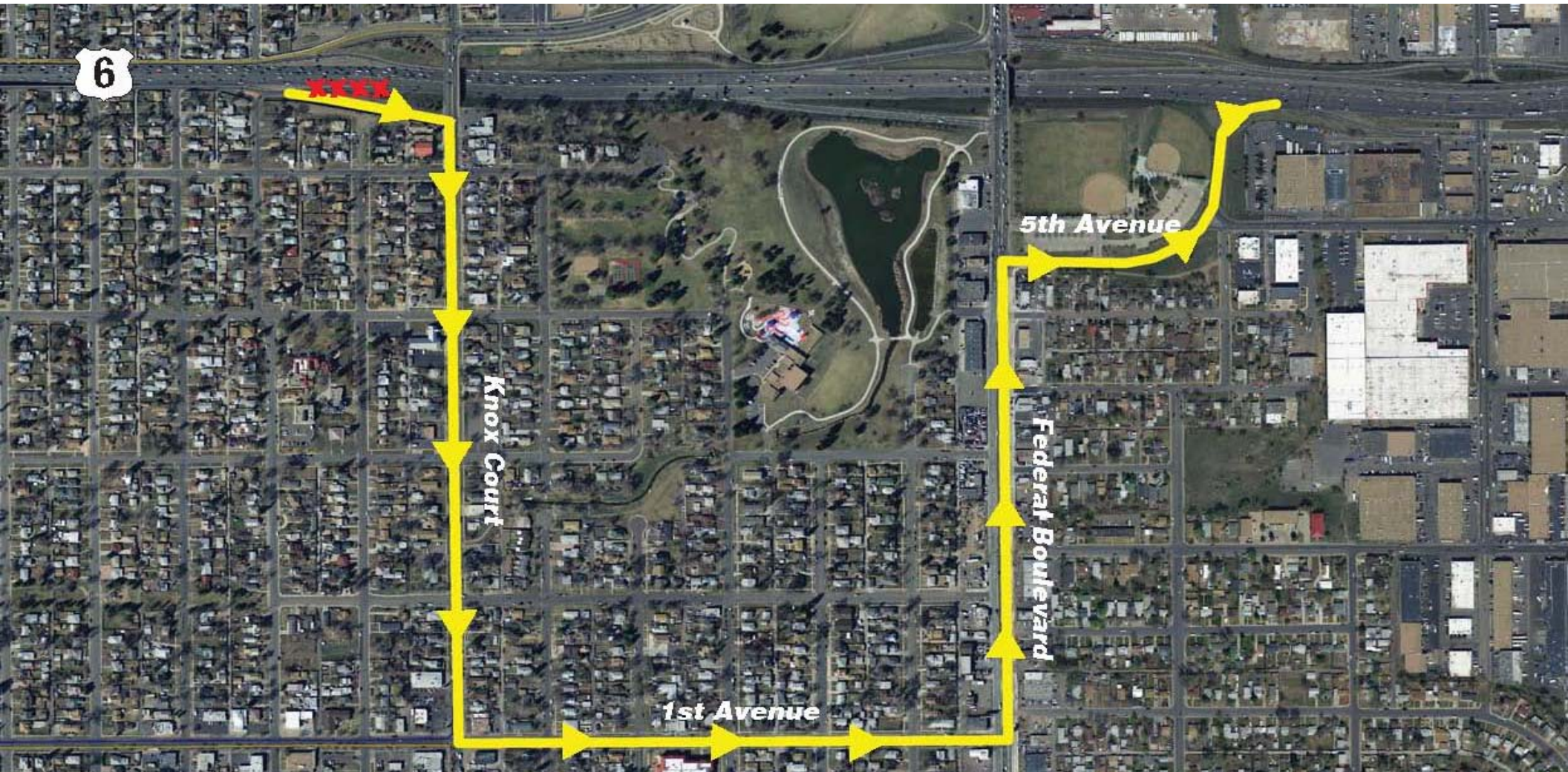
Closures & detours: Knox Bridge



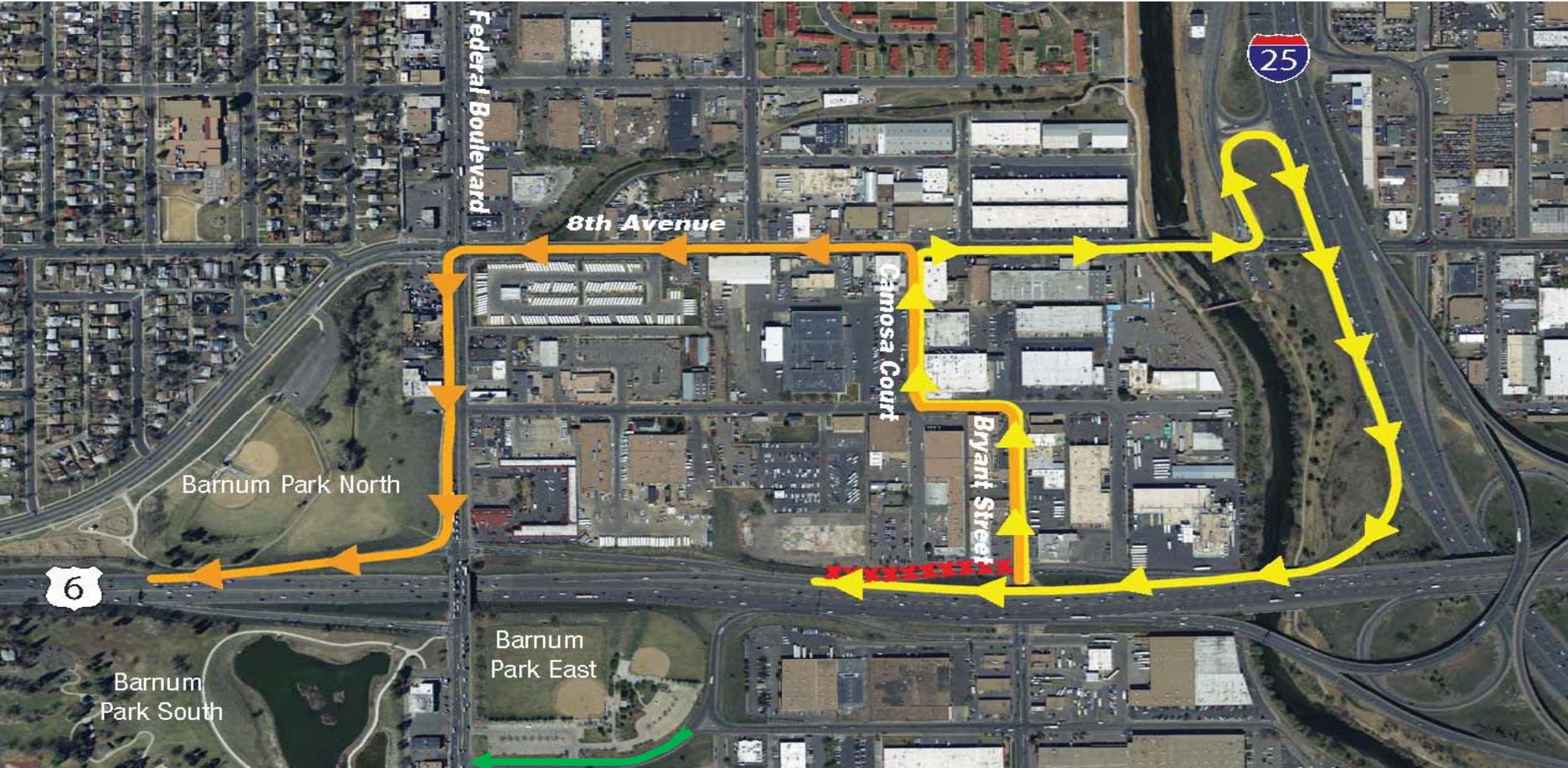
Closures & detours: Knox Bridge



Closures & detours: Lowell on-ramp to eastbound US 6



Closures & detours: Bryant St. on-ramp to WB US 6

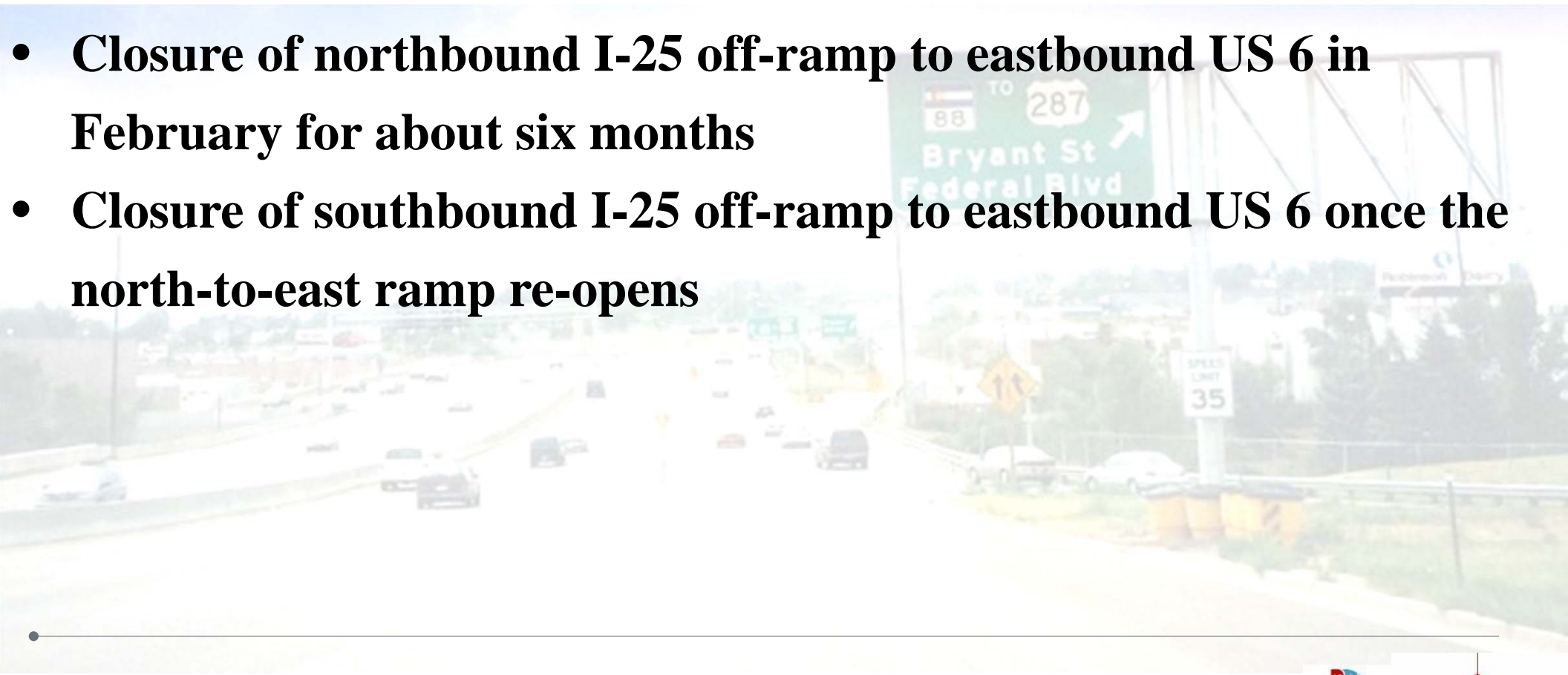


Closures & detours: EB US 6 off-ramp to Bryant St.

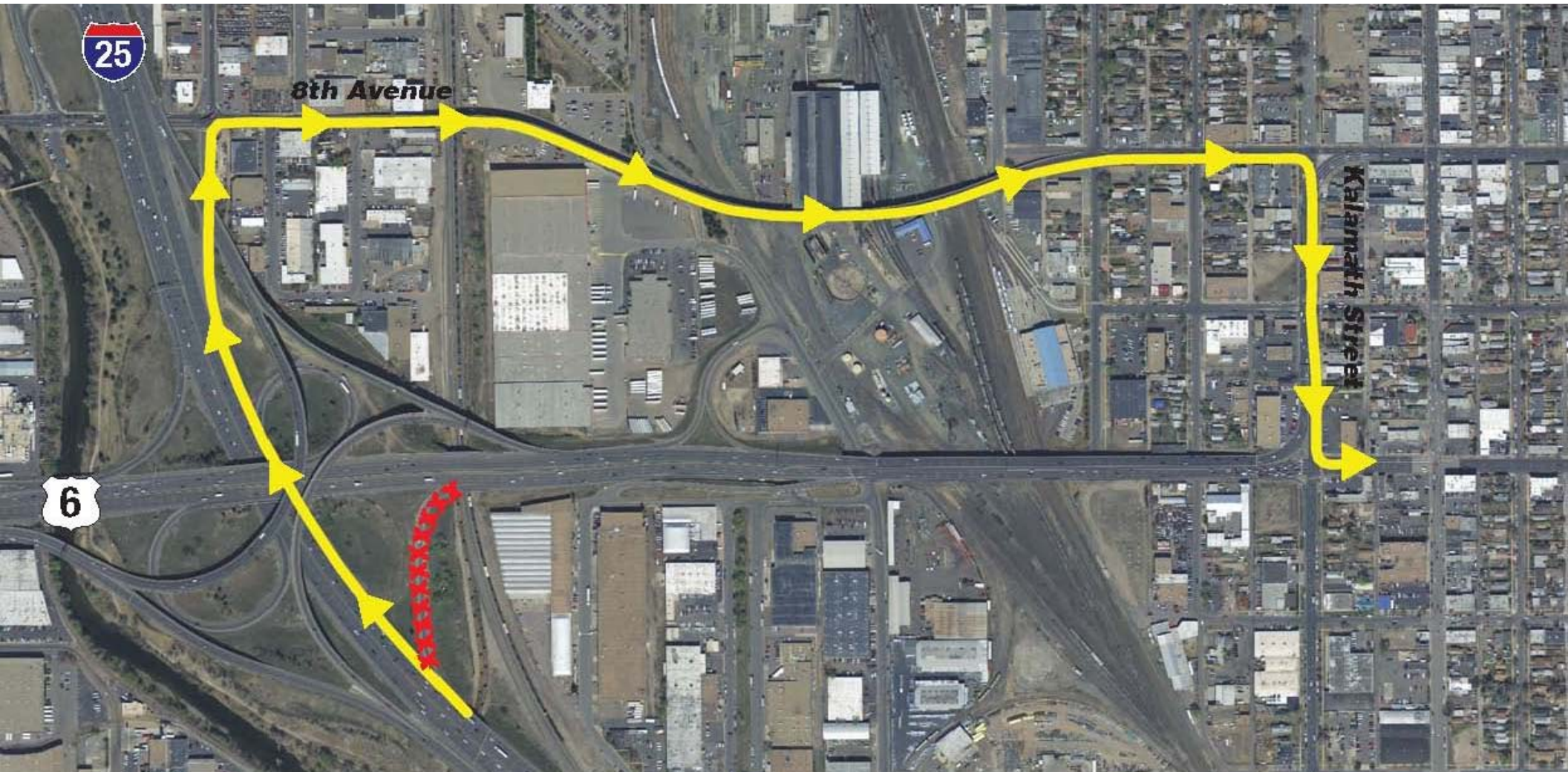


Additional traffic impacts

- **Closure of northbound I-25 off-ramp to eastbound US 6 in February for about six months**
- **Closure of southbound I-25 off-ramp to eastbound US 6 once the north-to-east ramp re-opens**



Closures & detours: NB I-25 to EB US 6



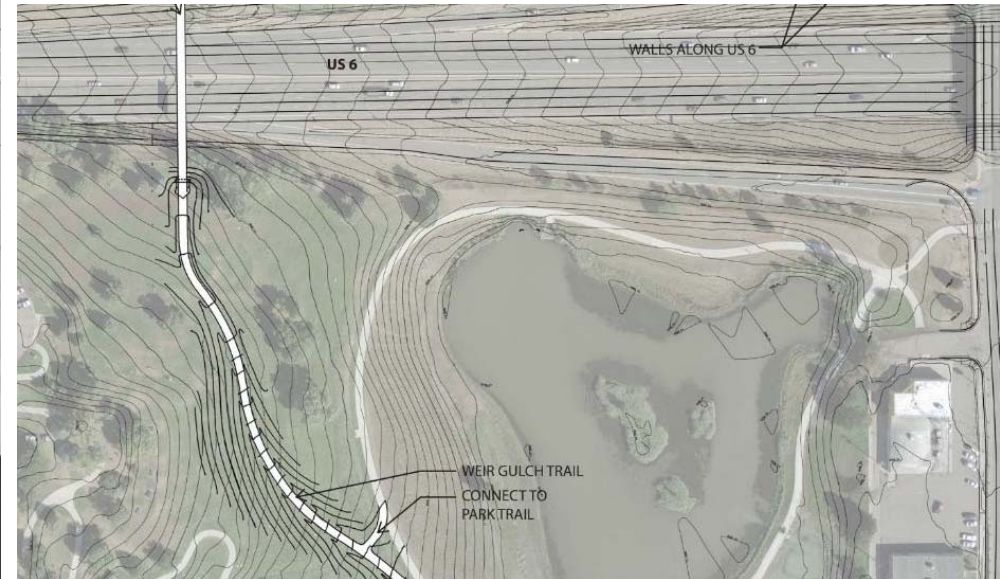
Closures & detours: SB I-25 to EB US 6



Overview of parks work

- **Reconstruction of Weir Gulch Trail along 8th Avenue**
- **Barnum North parking lot improvements**
- **Barnum South new trail connections, shelters and benches**
- **Barnum East synthetic turf field**

Barnum North & Barnum South



Barnum East



Closures & detours: Platte River Trail



What you can expect during construction

- **Traffic shifts to move motorists away from construction zones**
- **Nighttime work for safety critical activities such as bridge demolitions and setting bridge girders**
- **Overnight closures of US 6 while this work is done**
- **Lane reductions on Federal Boulevard while the bridge is rebuilt in two phases**

Measures to minimize impacts

- **Accommodating two-way traffic on 5th Avenue before closing the Bryant Street on-ramp to westbound US 6**
- **Keeping all lanes of US 6 open during high peak travel times**
- **Providing emergency pull-outs and Courtesy Patrol operations to help manage incidents**
- **Sharing information on light rail and bus schedules and carpool and vanpool operations to help ease traffic**

Job Fair details

- **Wednesday, Jan. 22 from 2 to 7 p.m.**
- **In this room**
- **Representatives with subcontracting companies, construction unions and workforce development programs will be present**
- **Bring résumé and information on work history and references to fill out applications**



US 6 Bridges Design-Build Project
Jan. 15, 2014



How to stay informed

- **Electronic signage with information on upcoming closures**
- **Information hotline: 720-881-5540**
- **Project website: www.coloradodot.info/projects/US6Bridges**
- **Email address: US6bridgesinfo@cig-pr.com**
- **Schedule a project representative to speak with your HOA, business or community group**



US 6 Bridges Design-Build Project
Jan. 15, 2014



Questions & Answers