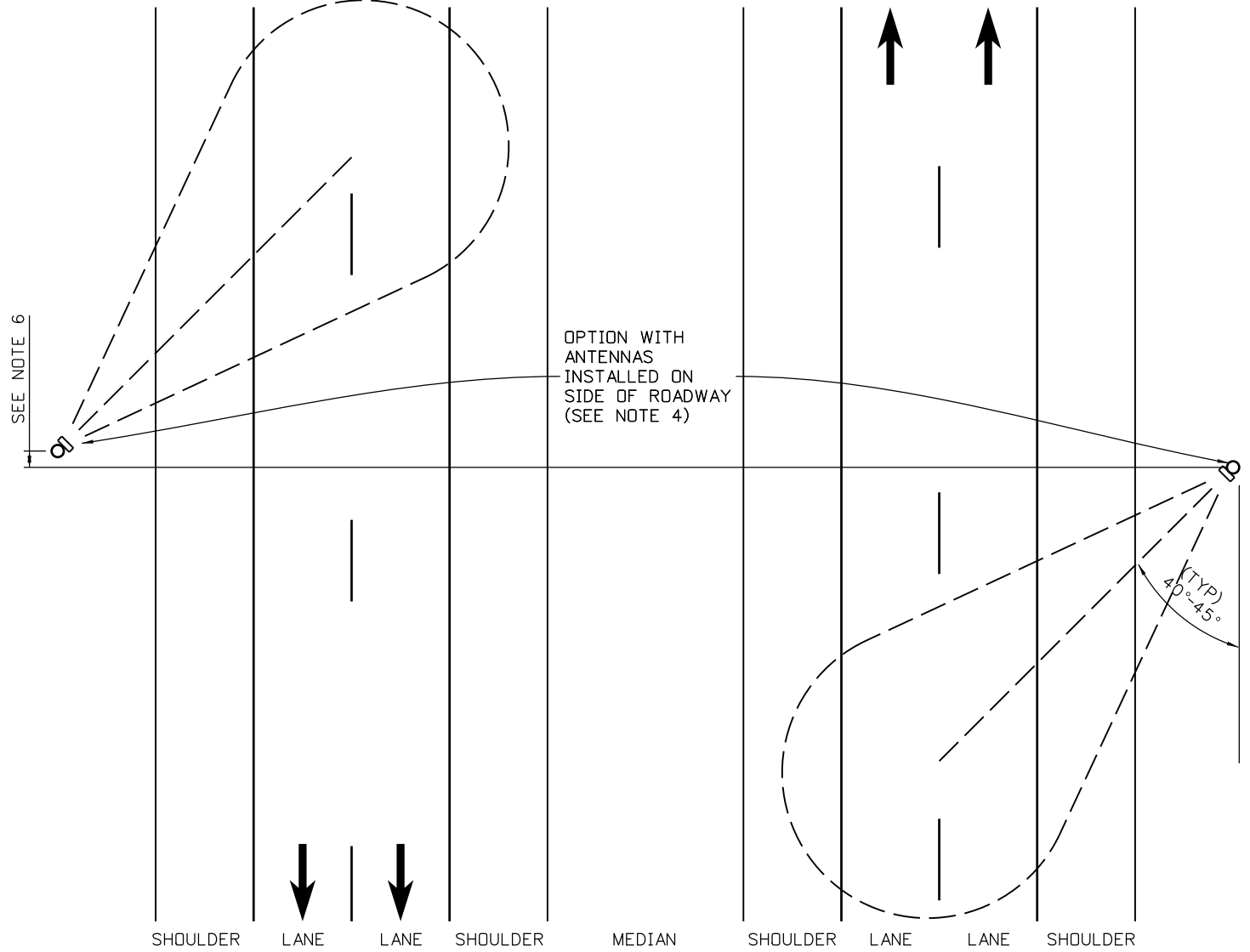
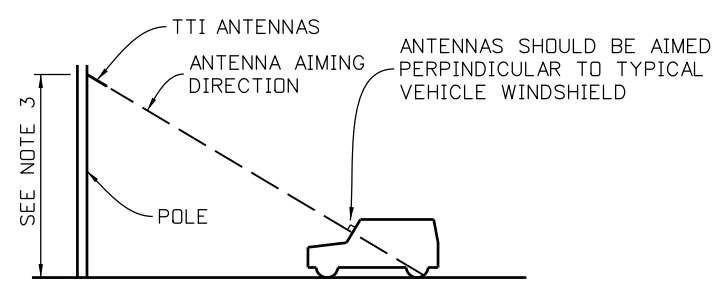


**TTI ANTENNA AIMING-TYPICAL PLAN VIEW
CENTER MEDIAN INSTALLATION**

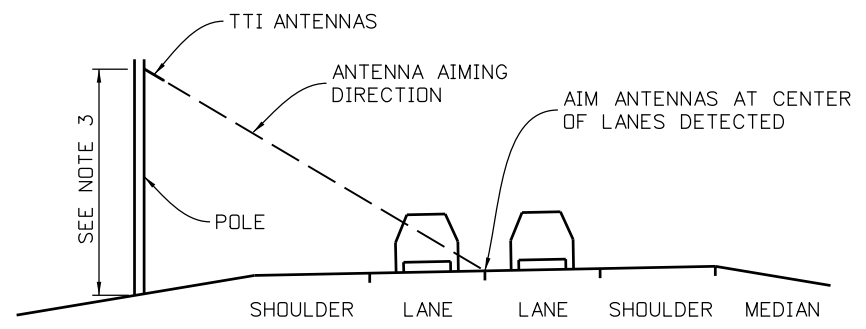


**TTI ANTENNA AIMING-TYPICAL PLAN VIEW
ROADSIDE INSTALLATION**

- NOTES:
1. TWO LANE, TWO DIRECTION DETECTION SHOWN. ADJUST AS NEEDED FOR SITE SPECIFIC NUMBER OF LANES AND DIRECTIONS DETECTED.
 2. SEE MANUFACTURER INSTALLATION INSTRUCTIONS FOR EQUIPMENT CONFIGURATION AND ADDITIONAL ANTENNA MOUNTING REQUIREMENTS.
 3. ANTENNA MOUNTING HEIGHT VARIES BY LOCATION. ADJUST ANTENNA MOUNTING HEIGHT TO ADDRESS AIMING CRITERIA IN PLAN, SECTION, AND PROFILE VIEWS.
 4. ANTENNAS SHALL BE HORIZONTALLY POLARIZED AND THERE SHALL BE A 2-FOOT MINIMUM SEPARATION BETWEEN ANY TWO ANTENNAS.
 5. MAXIMUM ANTENNA FIELD OF VIEW IS 70 FEET.
 6. OFFSET ANTENNA INSTALLATIONS IN ORDER TO MINIMIZE INTERFERENCE BETWEEN ANTENNA READERS.



TTI ANTENNA AIMING-TYPICAL PROFILE VIEW




TTI ANTENNA AIMING-TYPICAL SECTION VIEW

scottjk 4:26:13 PM C:\User Data\TSP\Projects\2012\US6_125\Details\TTIstandard.dgn

Print Date: 10/5/2012
File Name: TTIstandard.dgn
Horiz. Scale: 1:1 Vert. Scale: As Noted
Unit Information Unit Leader Initials

Sheet Revisions		
Date:	Comments	Init.

Colorado Department of Transportation



425 C Corporate Circle
Golden, CO 80401
Phone: 303-512-5801 FAX: 303-512-5878

HQ ITS Branch **AI**

As Constructed
No Revisions:
REVISION:
Void:

TTI DETAIL			
Designer:	JKS	Structure Numbers	X-XX-XX
Detailer:	JKS	Subset Sheets:	X-XX-XX
Sheet Subset:	ITS	1 of 1	

Project No./Code
BR 0061-083
18838
Sheet Number