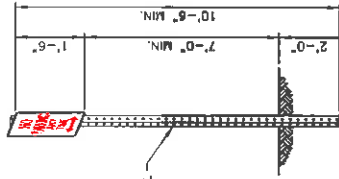


2" TELESPAR TUBING SQUARE 12 GAUGE STEEL (OR APPROVED EQUAL)

**ELEVATION**

OTHER REGULATORY OR WARNING SIGNS



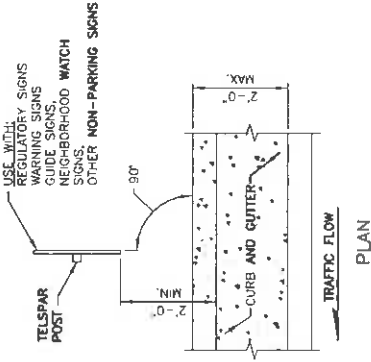
2" TELESPAR TUBING SQUARE 12 GAUGE STEEL (OR APPROVED EQUAL)

**ELEVATION**

PARKING SIGNS

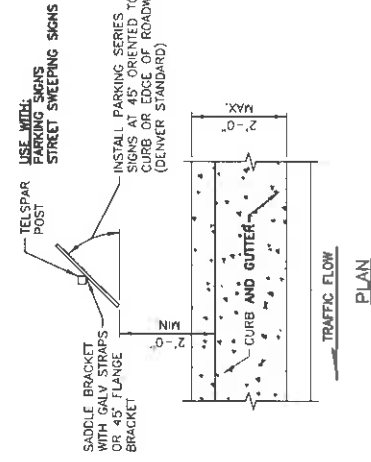
**NOTE**

ALL SIGNS SHALL BE FABRICATED FROM ASTM TYPE VI, 4000 SERIES SIGN FACE SHEETING MATERIAL. ALL SIGNS ARE TO BE MOUNTED ON 2" TELESPAR TUBING SQUARE 12 GAUGE STEEL (OR APPROVED EQUAL) WITH 1/2" DIA. PUNCHED DIAMETER HOLES PUNCHED, CENTERED ON TOP AND BOTTOM HORIZONTAL AXES WITH STANDARD 1/2" RADIUS CORNERS. ALL IMAGING SHALL BE ACCOMPLISHED WITH A MATCH COMPONENT SYSTEM WITH ACRYLIC FILM THAT MATCHES THE WARRANTY OF THE BASE REFLECTIVE SHEETING. INKS SHALL NOT BE PERMITTED FOR IMAGING.



**PLAN**

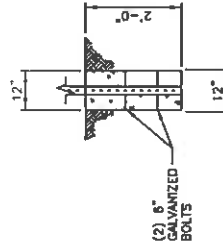
TRAFFIC FLOW



**PLAN**

TRAFFIC FLOW

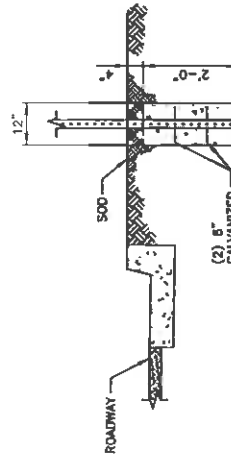
**ROADSIDE SIGN INSTALLATION**



(2) 6" GALVANIZED BOLTS

**DETAIL 1**

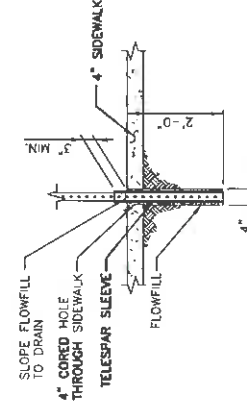
MOUNTED IN DIRT



(2) 6" GALVANIZED BOLTS

**DETAIL 2**

MOUNTED IN SOD/VEGETATION



**DETAIL 3**

MOUNTED IN SIDEWALK/HARDSCAPE

**NOTE**  
MOUNTING IN SOD OR DIRT REQUIRES APPROXIMATELY 2.0 CU. FT. OF CONCRETE.

CITY & COUNTY OF DENVER  
SINGLE SIGN POST MOUNTING DETAILS