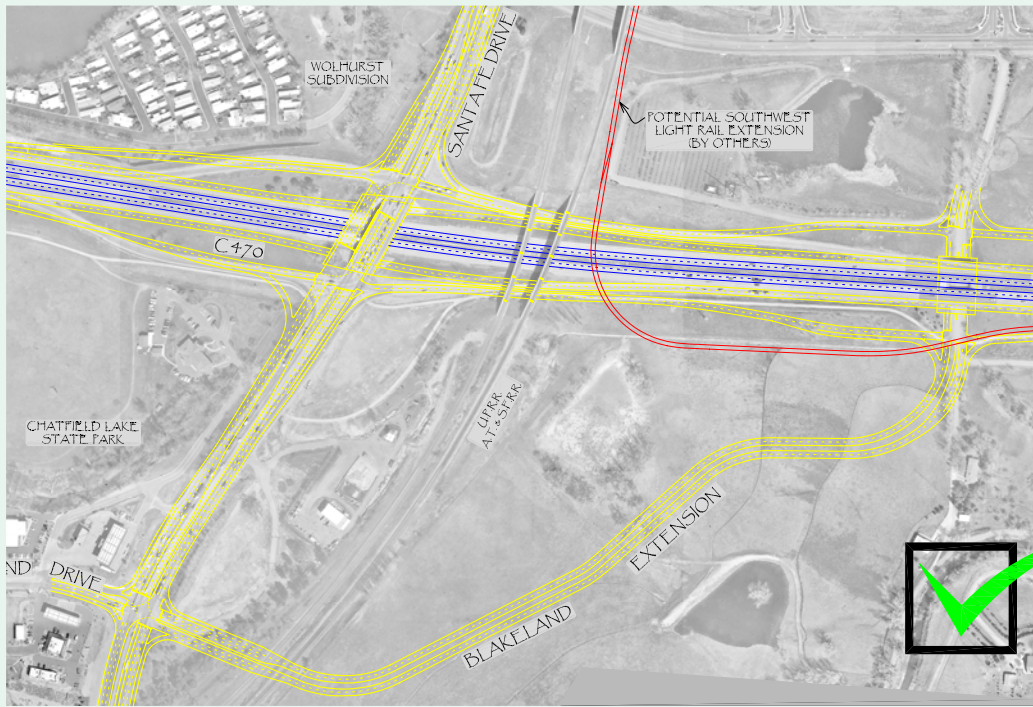


SANTA FE INTERCHANGE

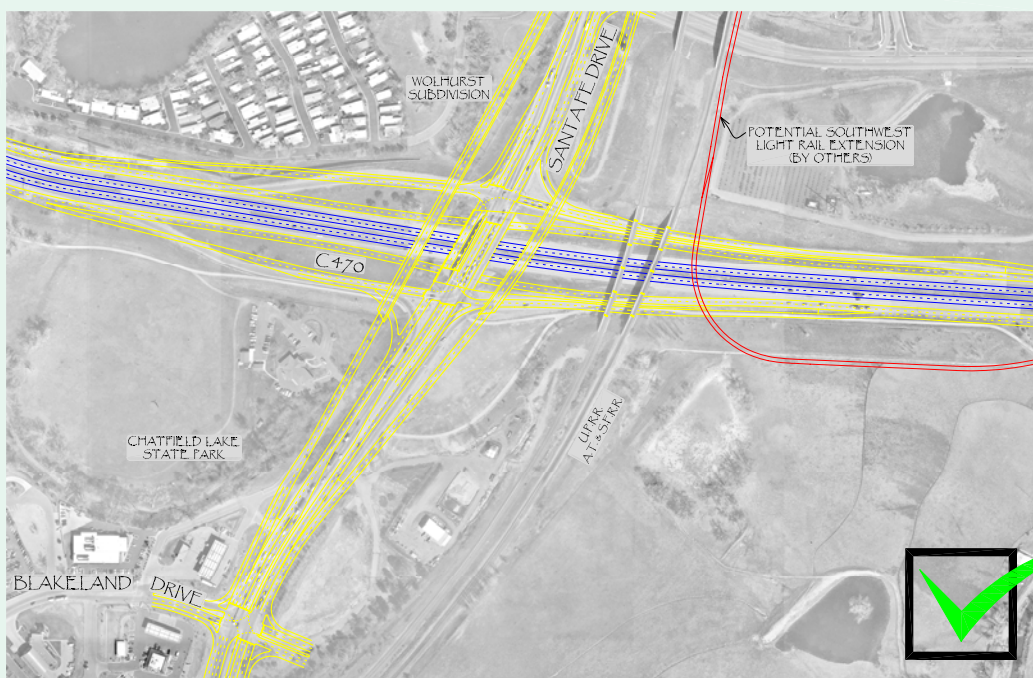
ALTERNATIVES CARRIED FORWARD

SPLIT DIAMOND



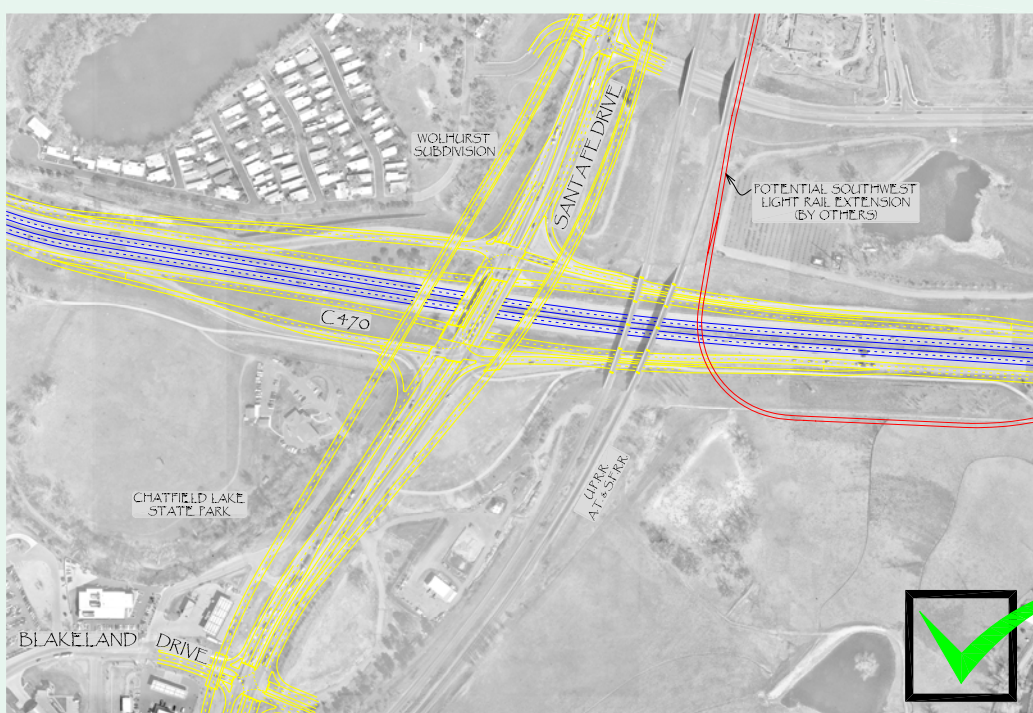
- Splits Access To Two Crossroads
- Connects Blakeland Extension & Santa Fe With Parallel Roadways
- Increases The Number Of Signalized Intersections For Some Movements
- An Extension Of Blakeland Is Required

3-LEVEL DIAMOND (A)



- Through Traffic Along Santa Fe May Bypass Interchange Intersections
- Reduces Congestion Within Interchange Compared To Diamond Configuration
- Geometry At Blakeland Intersection Will Require An Additional Traffic Signal Phase
- Potential Impacts To State Park Land
- Potential T-Ramp Access To/From Express Lanes

3-LEVEL DIAMOND (B)



- Through Traffic Along Santa Fe May Bypass Interchange Intersections
- Reduces Congestion Within Interchange Compared To Diamond Configuration
- Southbound Bypass Geometry Will Likely Impact Existing Railroad Bridges South Of Blakeland
- Potential Impacts To State Park Land
- Potential T-Ramp Access To/From Express Lanes

 EXPRESS LANES

 GENERAL PURPOSE LANES

