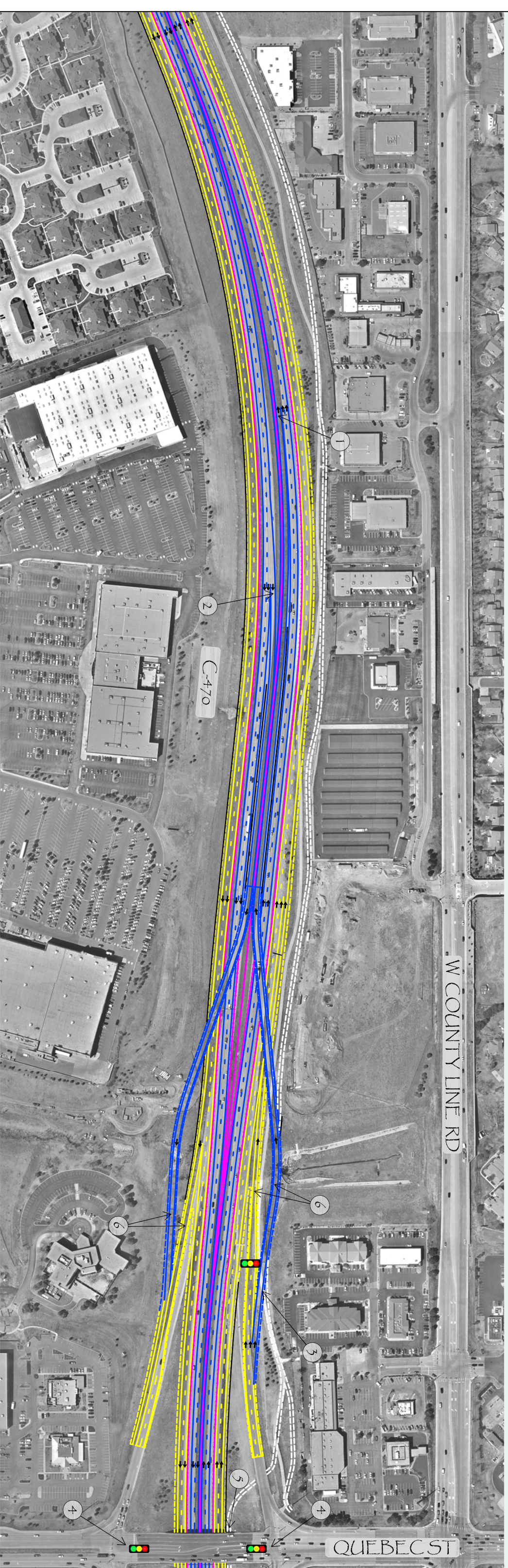


Quebec Interchange

Express Lane Braided Ramps



DESCRIPTION

- 1 Westbound merge from the flyover ramp directly into express lanes from the left
- 2 Eastbound exit to the left from express lanes onto the flyover ramp
- 3 Access onto westbound express lane ramp prior to ramp metering
- 4 Existing configurations at the Quebec ramp intersections will remain the same
- 5 Grade separated trail crossing under Quebec (by others)
- 6 Access to both express lanes and general purpose lanes from Quebec

- Legend**
- General Purpose Lanes
 - Express Lanes
 - (White) Trail Reconstruction
 - Direction of Traffic
 - Retaining Walls



1" = 100'



C-470 CORRIDOR PROJECT