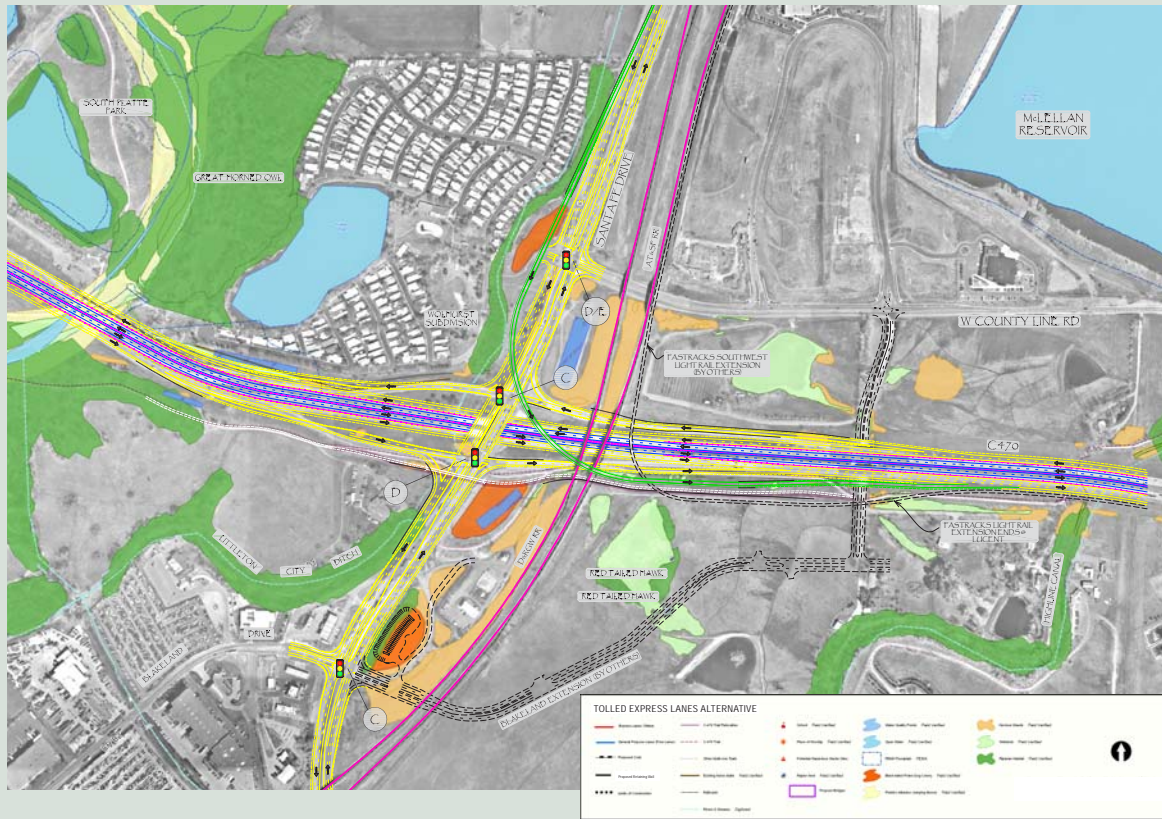


# Santa Fe Interchange

## Improved Diamond with One Fly-Over



### Description

- Improved Diamond with One Fly-Over is the recommended interchange configuration for the Environmental Assessment
- provides improved traffic operations including free-flow traffic on the fly-over ramp
- recommended configuration is similar to existing, maximizing drivability
- impacts to environmental resources will be minimized through detailed design
- trail will be grade-separated through the interchange
- configuration can be implemented with tolled express lanes or general purpose lanes along C-470

### Legend

- general purpose lanes
- tolled express lanes
- phased improvement
- retaining walls
- direction of traffic
- (black) improvements by others
- (white) trail reconstruction
- 2025 intersection level of service



1" = 200'



## C-470 CORRIDOR PROJECT