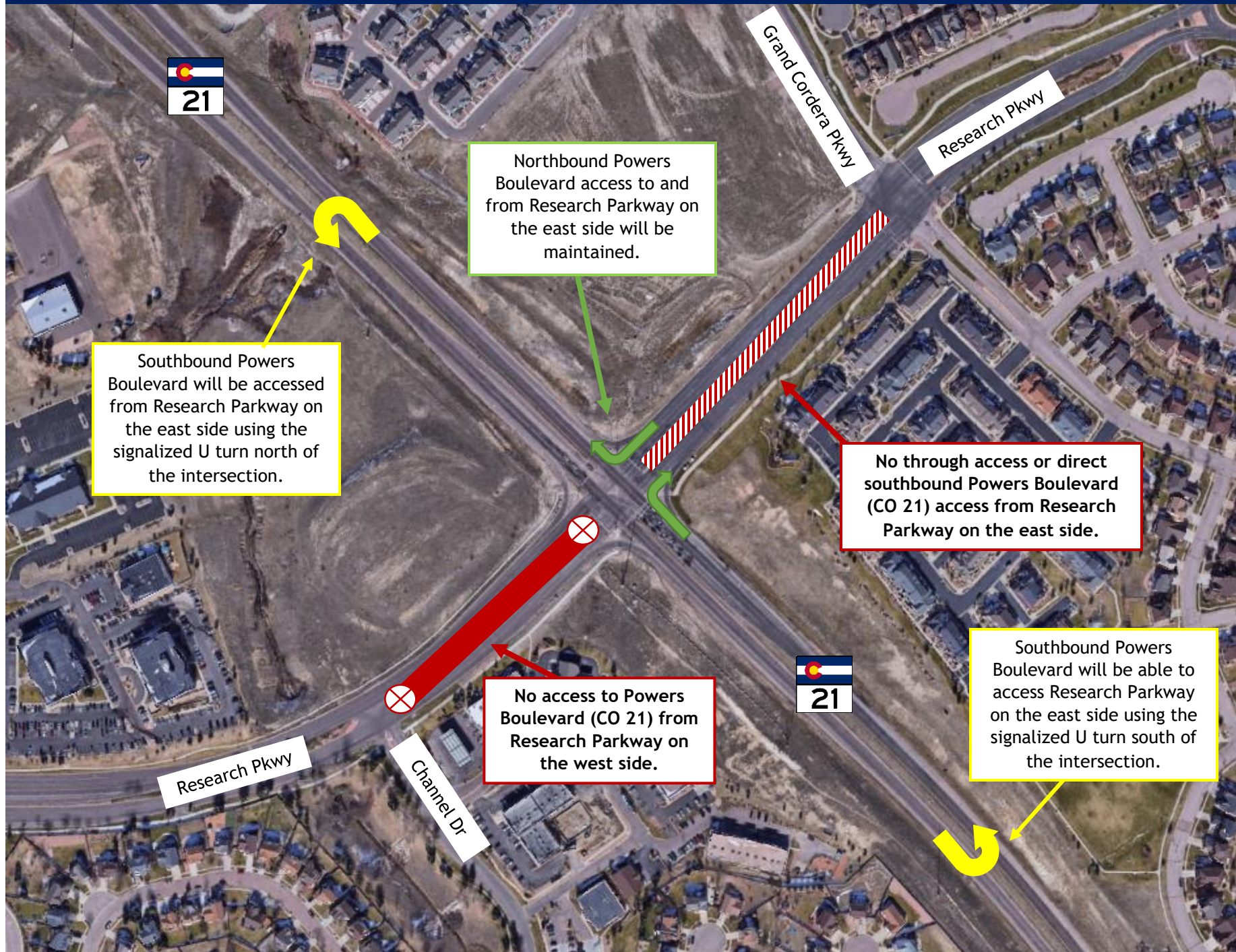


Powers Boulevard (CO21) and Research Parkway Interchange Project

Full closure of Research Parkway between Grand Cordera Parkway and Channel Drive



COLORADO
Department of Transportation



Northbound Powers Boulevard access to and from Research Parkway on the east side will be maintained.

Southbound Powers Boulevard will be accessed from Research Parkway on the east side using the signalized U turn north of the intersection.

No through access or direct southbound Powers Boulevard (CO 21) access from Research Parkway on the east side.

No access to Powers Boulevard (CO 21) from Research Parkway on the west side.

Southbound Powers Boulevard will be able to access Research Parkway on the east side using the signalized U turn south of the intersection.

