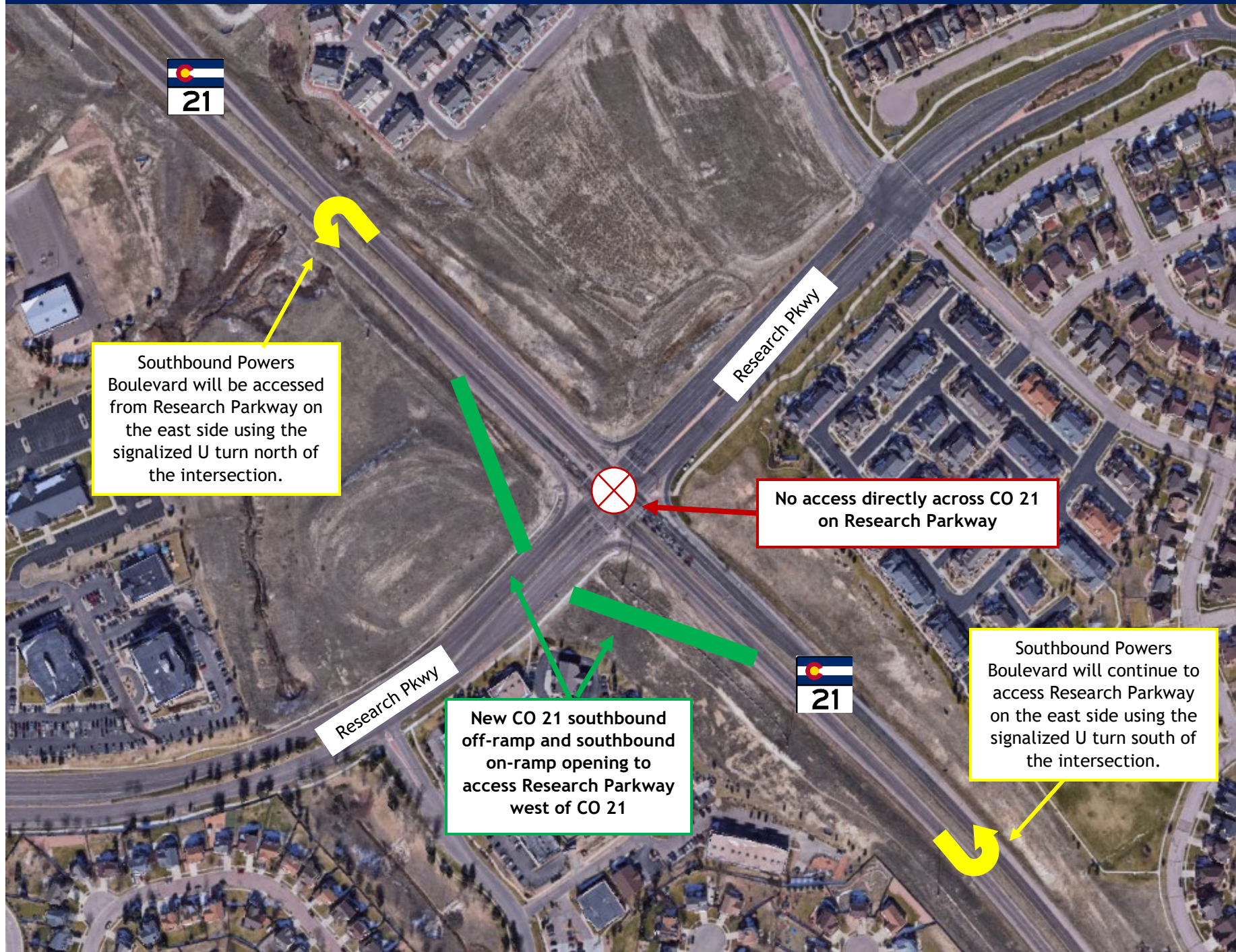


CO 21 (Powers Boulevard) and Research Parkway Interchange Project

Southbound CO 21 ramps open at Research Parkway



COLORADO
Department of Transportation



Southbound Powers Boulevard will be accessed from Research Parkway on the east side using the signalized U turn north of the intersection.

No access directly across CO 21 on Research Parkway



New CO 21 southbound off-ramp and southbound on-ramp opening to access Research Parkway west of CO 21



Southbound Powers Boulevard will continue to access Research Parkway on the east side using the signalized U turn south of the intersection.