



# MONTHLY PROGRESS REPORT

AUGUST 2009





TABLE OF CONTENTS

|                                      | <u>PAGE</u> |
|--------------------------------------|-------------|
| Introduction                         | 1           |
| <b>1.0</b> Volumes and Lane Usage    | 1           |
| <b>2.0</b> Bus Travel Times          | 6           |
| <b>3.0</b> Revenues and Expenditures | 6           |
| <b>4.0</b> Incidents                 | 9           |
| <b>5.0</b> Enforcement               | 9           |
| <b>6.0</b> Operational Issues        | 10          |

TABLES

|   |   |
|---|---|
| August 2009 Traffic Data Summary                        | 1 |
| Peak Period Traffic Data (AM – Inbound)                 | 4 |
| Peak Period Traffic Data (PM – Outbound)                | 5 |
| AM and PM Peak Hour Traffic                             | 5 |
| 15 Minute Counts at 19 <sup>th</sup> Street             | 6 |
| FY 10 General Administrative Expenditures – August 2009 | 8 |
| FY 10 I-25 HOV/Express Lanes Expenditures – August 2009 | 9 |
| Colorado State Patrol Manual Citations                  | 9 |

FIGURES

|   |   |
|---|---|
| August 2009 Daily Traffic Volumes                 | 2 |
| Monthly Traffic Volumes                           | 2 |
| FY 09/10 Traffic Comparisons                      | 3 |
| FY 2010 Monthly Estimated Toll Revenue vs. Actual | 7 |
| FY 09/10 Revenue Comparisons                      | 7 |



## INTRODUCTION

This report contains information regarding traffic volumes and lane usage, bus travel times, revenues and expenditures, law enforcement activities, and incidents which may have impacted operations or revenues during the month of August 2009.

### 1.0 VOLUMES AND LANE USAGE

During August 2009, recorded use of the I-25 HOV/Express Lanes (including both HOV and toll-paying vehicles), decreased to 316,353. This represents a 1.98% decrease from 322,751 in July and a 1.38% increase from 312,050 in June.

The highest traffic volume recorded since opening was in October 2007, at 355,308.

The August summary of traffic data for both Tolled Express and HOV lanes follows. Data includes weekend and non-peak traffic.

Due to implementation of License Plate Tolling (LPT), the Traffic Data Summary table now displays Express Tolling, Violations, and LPT in separate columns. License plate tolls are presumed to be customers until such time that a bill is not paid. After a period of time, unpaid toll bills move to the violation process.

| August 2009 Traffic Data Summary  |         |         |            |        |                |
|-----------------------------------|---------|---------|------------|--------|----------------|
|                                   | Express | HOV     | Violations | LPT    | Total          |
| <b>Total Monthly Traffic</b>      | 82,280  | 220,656 | 565        | 12,852 | <b>316,353</b> |
| <b>Maximum Daily Traffic</b>      | 4,630   | 9,212   | 37         | 1,775  | <b>14,015</b>  |
| <b>Average Daily Traffic</b>      | 3,748   | 7,645   | 25         | 545    | <b>11,963</b>  |
| <b>Avg Weekday AM Peak Hour</b>   | 453     | 609     | 3          | 55     | <b>1,121</b>   |
| <b>Avg Weekday PM Peak Hour</b>   | 368     | 792     | 2          | 56     | <b>1,219</b>   |
| <b>Avg Weekday AM Peak Period</b> | 1,810   | 2,438   | 13         | 221    | <b>4,482</b>   |
| <b>Avg Weekday PM Peak Period</b> | 1,472   | 3,169   | 8          | 226    | <b>4,875</b>   |

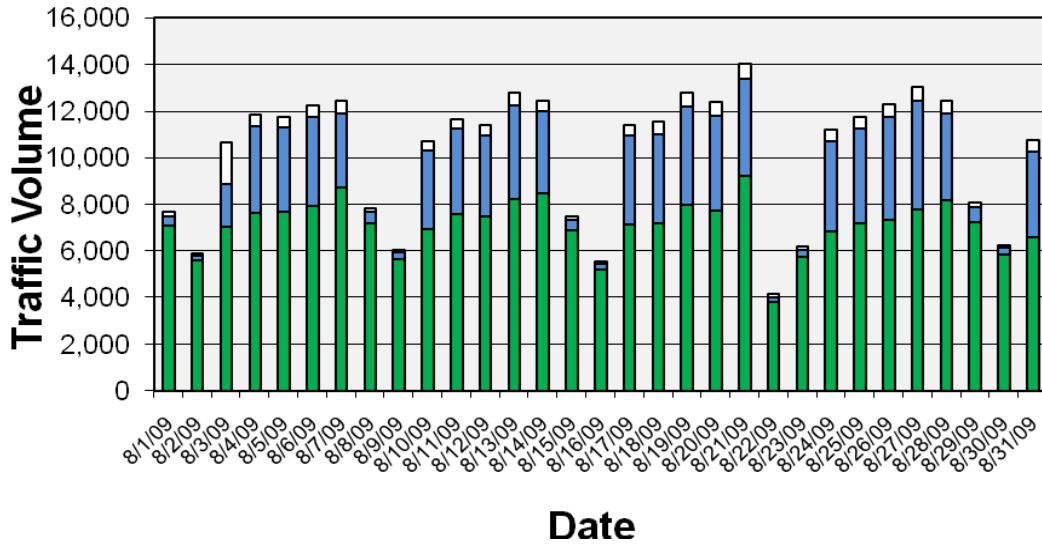
\* 6:00 AM – 10:00 AM

\*\* 3:00 PM – 7:00 PM

Daily and monthly traffic volumes are illustrated in the following figures. LPT and violation counts have been combined into a third tier for the Daily Traffic Volumes table.

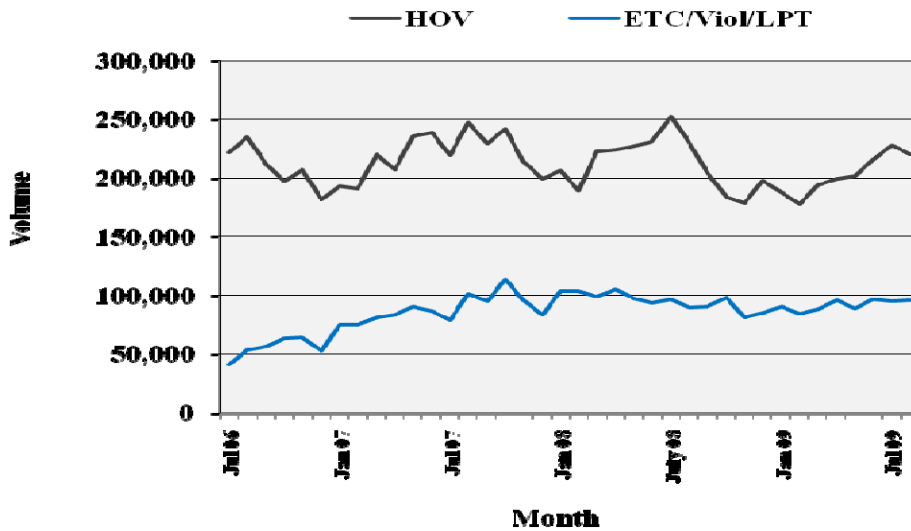
**AUGUST 2009 DAILY TRAFFIC VOLUMES**

□ LPT/VIOL   ■ ETL   ■ HOV



The Monthly Traffic Volumes chart below shows the ETL, Violations, and LPT combined.

**MONTHLY TRAFFIC VOLUMES**



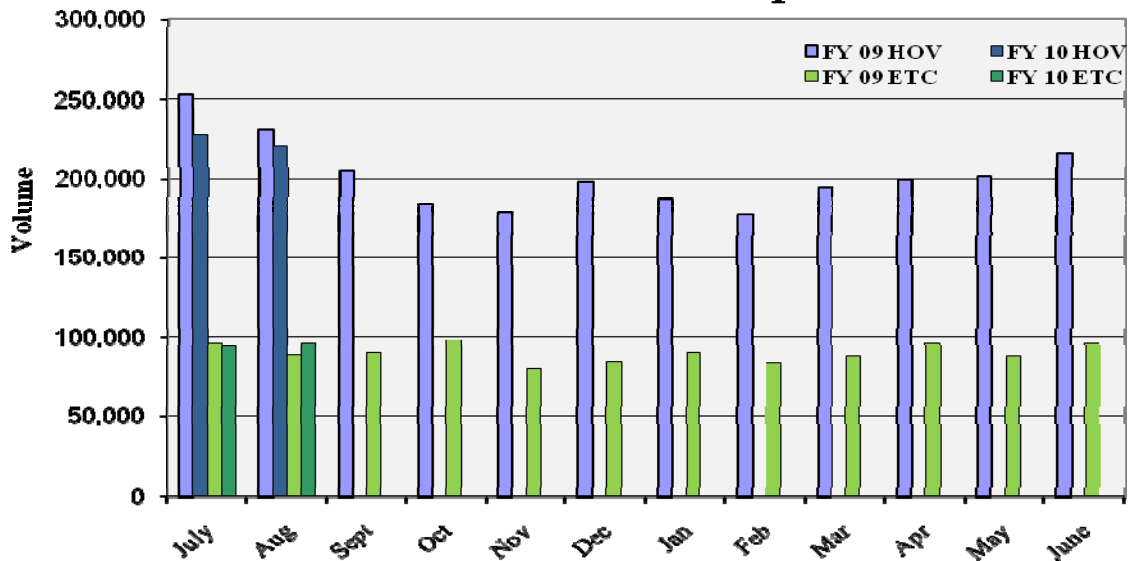


HOV lane usage during August decreased to 220,656; down from 227,868 in July. This amount is down from 230,476 in August 2008 and represents a decrease of 9,820, or 4.26% since one year ago.

Toll lane usage during August increased to 95,697; up from 94,883 in July. August's toll lane usage amount includes ETL, LPT, and violations. This amount is up from 89,249 in August 2008 and represents an increase of 6,448, or 7.22% since one year ago.

Current fiscal year traffic volumes compared to the previous fiscal year's volumes are represented in the following figure.

**FY 09/10 Traffic Comparisons**





MONTHLY PROGRESS REPORT – August 2009

Detailed data for peak period traffic volumes are found in the following tables.

| <b>Morning Rush Period</b> |                          |            |                  |            |              |                     |            |                  |            |              |
|----------------------------|--------------------------|------------|------------------|------------|--------------|---------------------|------------|------------------|------------|--------------|
| <b>Weekday</b>             | <b>Total Peak Period</b> |            |                  |            |              | <b>Avg Per Hour</b> |            |                  |            |              |
|                            | <b>Express</b>           | <b>HOV</b> | <b>Violation</b> | <b>LPT</b> | <b>Total</b> | <b>Express</b>      | <b>HOV</b> | <b>Violation</b> | <b>LPT</b> | <b>Total</b> |
| <b>Monday</b>              | 317                      | 2330       | 4                | 1509       | 4160         | 79                  | 582        | 1                | 377        | 1040         |
| <b>Tuesday</b>             | 1839                     | 2444       | 14               | 155        | 4452         | 460                 | 611        | 4                | 39         | 1113         |
| <b>Wednesday</b>           | 1773                     | 2482       | 12               | 137        | 4404         | 443                 | 620        | 3                | 34         | 1101         |
| <b>Thursday</b>            | 1872                     | 2469       | 11               | 143        | 4495         | 468                 | 617        | 3                | 36         | 1124         |
| <b>Friday</b>              | 1410                     | 2239       | 7                | 123        | 3779         | 352                 | 560        | 2                | 31         | 945          |
| <b>Monday</b>              | 1758                     | 2238       | 11               | 137        | 4144         | 440                 | 560        | 3                | 34         | 1036         |
| <b>Tuesday</b>             | 1813                     | 2450       | 13               | 142        | 4418         | 453                 | 612        | 3                | 36         | 1104         |
| <b>Wednesday</b>           | 1647                     | 2207       | 9                | 128        | 3991         | 412                 | 552        | 2                | 32         | 998          |
| <b>Thursday</b>            | 1862                     | 2492       | 14               | 148        | 4516         | 466                 | 623        | 4                | 37         | 1129         |
| <b>Friday</b>              | 1676                     | 2304       | 14               | 126        | 4120         | 419                 | 576        | 4                | 32         | 1030         |
| <b>Monday</b>              | 1836                     | 2382       | 12               | 141        | 4371         | 459                 | 596        | 3                | 35         | 1093         |
| <b>Tuesday</b>             | 1949                     | 2504       | 14               | 164        | 4631         | 487                 | 626        | 4                | 41         | 1158         |
| <b>Wednesday</b>           | 1957                     | 2571       | 18               | 147        | 4693         | 489                 | 643        | 4                | 37         | 1173         |
| <b>Thursday</b>            | 2073                     | 2579       | 14               | 178        | 4844         | 518                 | 645        | 4                | 44         | 1211         |
| <b>Friday</b>              | 1801                     | 2384       | 16               | 166        | 4367         | 450                 | 596        | 4                | 42         | 1092         |
| <b>Monday</b>              | 2057                     | 2495       | 21               | 189        | 4762         | 514                 | 624        | 5                | 47         | 1190         |
| <b>Tuesday</b>             | 2125                     | 2558       | 12               | 178        | 4873         | 531                 | 640        | 3                | 44         | 1218         |
| <b>Wednesday</b>           | 2283                     | 2580       | 19               | 183        | 5065         | 571                 | 645        | 5                | 46         | 1266         |
| <b>Thursday</b>            | 2104                     | 2578       | 19               | 179        | 4880         | 526                 | 644        | 5                | 45         | 1220         |
| <b>Friday</b>              | 1859                     | 2412       | 10               | 168        | 4449         | 465                 | 603        | 2                | 42         | 1112         |
| <b>Monday</b>              | 2002                     | 2498       | 15               | 196        | 4711         | 500                 | 624        | 4                | 49         | 1178         |



MONTHLY PROGRESS REPORT – August 2009

| Afternoon Rush Period |                   |      |           |     |       |              |     |           |     |       |
|-----------------------|-------------------|------|-----------|-----|-------|--------------|-----|-----------|-----|-------|
| Weekday               | Total Peak Period |      |           |     |       | Avg Per Hour |     |           |     |       |
|                       | Express           | HOV  | Violation | LPT | Total | Express      | HOV | Violation | LPT | Total |
| Monday                | 1231              | 3002 | 5         | 155 | 4393  | 308          | 750 | 1         | 39  | 1098  |
| Tuesday               | 1475              | 3251 | 5         | 221 | 4952  | 369          | 813 | 1         | 55  | 1238  |
| Wednesday             | 1407              | 3245 | 8         | 212 | 4872  | 352          | 811 | 2         | 53  | 1218  |
| Thursday              | 1546              | 3239 | 6         | 250 | 5041  | 386          | 810 | 2         | 62  | 1260  |
| Friday                | 1248              | 3449 | 5         | 242 | 4944  | 312          | 862 | 1         | 60  | 1236  |
| Monday                | 1286              | 2902 | 6         | 189 | 4383  | 322          | 726 | 2         | 47  | 1096  |
| Tuesday               | 1413              | 3137 | 9         | 199 | 4758  | 353          | 784 | 2         | 50  | 1190  |
| Wednesday             | 1451              | 3252 | 6         | 212 | 4921  | 363          | 813 | 2         | 53  | 1230  |
| Thursday              | 1664              | 3673 | 8         | 252 | 5597  | 416          | 918 | 2         | 63  | 1399  |
| Friday                | 1357              | 3601 | 9         | 209 | 5176  | 339          | 900 | 2         | 52  | 1294  |
| Monday                | 1546              | 3137 | 12        | 217 | 4912  | 386          | 784 | 3         | 54  | 1228  |
| Tuesday               | 1419              | 2977 | 5         | 227 | 4628  | 355          | 744 | 1         | 57  | 1157  |
| Wednesday             | 1709              | 3330 | 5         | 279 | 5323  | 427          | 832 | 1         | 70  | 1331  |
| Thursday              | 1508              | 3034 | 10        | 279 | 4831  | 377          | 758 | 2         | 70  | 1208  |
| Friday                | 1556              | 3425 | 17        | 269 | 5267  | 389          | 856 | 4         | 67  | 1317  |
| Monday                | 1418              | 2708 | 9         | 206 | 4341  | 354          | 677 | 2         | 52  | 1085  |
| Tuesday               | 1411              | 2663 | 5         | 194 | 4273  | 353          | 666 | 1         | 48  | 1068  |
| Wednesday             | 1617              | 2912 | 12        | 216 | 4757  | 404          | 728 | 3         | 54  | 1189  |
| Thursday              | 1960              | 3454 | 11        | 293 | 5718  | 490          | 864 | 3         | 73  | 1430  |
| Friday                | 1353              | 3316 | 9         | 228 | 4906  | 338          | 829 | 2         | 57  | 1226  |
| Monday                | 1331              | 2843 | 11        | 197 | 4382  | 333          | 711 | 3         | 49  | 1096  |

The following table represents monthly averages of peak hour traffic during FY 2010.

|        | AM ETL<br>7:00-8:00 | AM HOV<br>7:00-8:00 | PM HOV<br>5:00-6:00 | PM ETL<br>5:00-6:00 | AM Total<br>7:00-8:00 | PM Total<br>5:00-6:00 | Capacity |
|--------|---------------------|---------------------|---------------------|---------------------|-----------------------|-----------------------|----------|
| Jul 09 | 711                 | 899                 | 993                 | 598                 | 1,610                 | 1,521                 | 3,000    |
| Aug 09 | 799                 | 927                 | 1,008               | 626                 | 1,726                 | 1,635                 | 3,000    |

Fifteen minute counts at the 19<sup>th</sup> Street exit have been collected since April 2008. Counts are conducted manually only during the first full week of each month, providing a representative sample.

November 2008 recorded the highest counts at 19<sup>th</sup> Street, with an average of 1,400 vehicles during the rush hour. The August 2009 recorded averages totaled 1,203. The peak 15-minute period during rush hour is from 7:45 to 8:00. Counts at 19<sup>th</sup> street were about the same as they were in summer a year ago.



A table containing 15-minute counts at 19<sup>th</sup> Street follows:

| 15-MINUTE COUNTS AT 19 <sup>TH</sup> STREET |                 |                  |                    |                   |                 |         |
|---|-----------------|------------------|--------------------|-------------------|-----------------|---------|
|   | Monday<br>3-Aug | Tuesday<br>4-Aug | Wednesday<br>5-Aug | Thursday<br>6-Aug | Friday<br>7-Aug | Average |
| 7:00 - 7:15                                 | 132             | 168              | 141                | 151               | 136             | 146     |
| 7:15 - 7:30                                 | 196             | 206              | 203                | 203               | 194             | 200     |
| 7:30 - 7:45                                 | 217             | 247              | 231                | 256               | 269             | 244     |
| 7:45 - 8:00                                 | 247             | 254              | 278                | 261               | 248             | 258     |
| 8:00 - 8:15                                 | 203             | 194              | 184                | 196               | 157             | 187     |
| 8:15 - 8:30                                 | 161             | 181              | 176                | 191               | 131             | 168     |

## 2.0 BUS TRAVEL TIMES

The IGA between CDOT and RTD prescribes triggers to determine if there is any degradation to travel times for buses and carpools. These triggers are:

- Exceeding travel time for more than one bus in an hour (provided the excess is not attributable to a stall, crash and closure of the lane, or special event).
- Exceeding the travel time for more than one day per week for three weeks in a row.
- Predictable patterns.

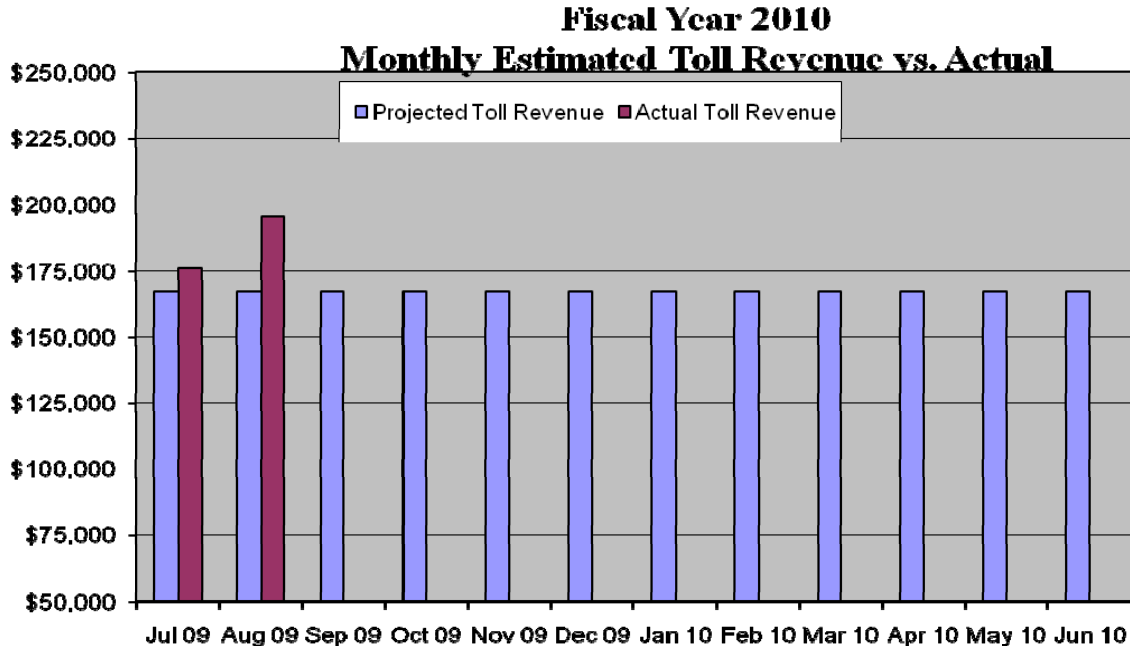
During August, one bus exceeded the allotted travel time. This bus came through at 9:41, well outside of the rush hour. In addition, nine buses were between the 7 minute 45 second travel time and 8 minute and 45 second travel time.

## 3.0 REVENUES AND EXPENDITURES

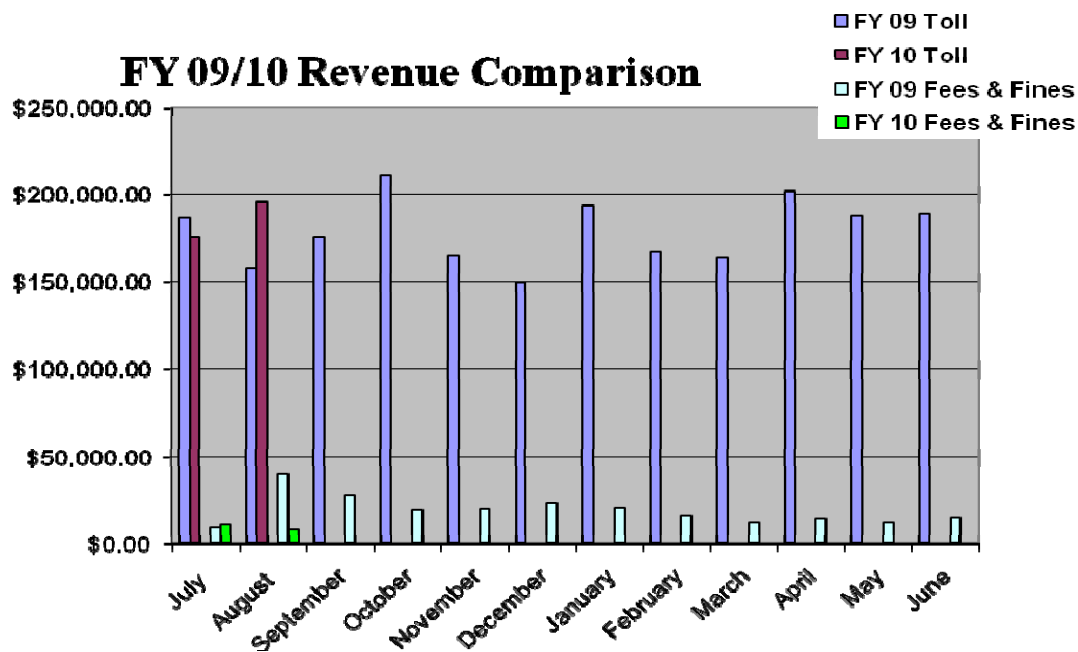
August toll revenues increased to \$195,228.25; up from \$175,778.90 in July. The total of all revenues, including tolls, fees, and fines, was \$204,118. Fees and fines collected this month decreased to \$8,889.75; down from \$11,604.74 in July. The amount of fees and fines collected in August represents 4.35% of August's total revenues. (Reminder: Some revenues that were posted may have been transactions, fees, and fines reconciled from previous months' transactions.)



The following figure shows the projected vs. actual toll revenue to date for Fiscal Year 2010.



Current fiscal year revenues compared to the previous fiscal year's revenues are illustrated in the following figure.





MONTHLY PROGRESS REPORT – August 2009

The following table illustrates general administrative expenditures through August 2009.

Due to the September 8<sup>th</sup> furlough, the August business close was moved to September 18<sup>th</sup>. Therefore, the final numbers for the August report may change slightly.

| ITEM  | Estimated Revenues  | Estimated Expenditures | Current Month Actual | Year-to-Date Actual | Remaining         |
|---|---------------------|------------------------|----------------------|---------------------|-------------------|
| <b>Administrative Budget</b>                          |                     |                        |                      |                     |                   |
| <b>Revenues</b>                                       |                     |                        |                      |                     |                   |
| Interest Earnings from                                | \$ 216,000          |                        | \$ 3,756             | \$ 7,479            | \$ 208,521        |
| Carry Forward Balance from Prior Fiscal Year          | \$ 1,891,651        |                        | \$ -                 | \$ 1,891,651        |                   |
| <b>Total Revenues</b>                                 | <b>\$ 2,107,651</b> |                        | <b>\$ 3,756</b>      | <b>\$ 1,899,130</b> | <b>\$ 208,521</b> |
| <b>Expenditures</b>                                   |                     |                        |                      |                     |                   |
| General Engineering Consultant                        |                     | \$ 100,000             | \$ -                 | \$ -                | \$ 100,000        |
| Traffic and Revenue Consultant                        |                     | \$ 100,000             | \$ -                 | \$ -                | \$ 100,000        |
| Financial Advisor                                     |                     | \$ 82,560              | \$ -                 | \$ -                | \$ 82,560         |
| Marketing/Research, Outreach                          |                     | \$ 40,000              | \$ -                 | \$ -                | \$ 40,000         |
| IBTTA Dues & Conference Registration (75% of \$4,000) |                     | \$ 3,000               | \$ -                 | \$ -                | \$ 3,000          |
| Travel, Meals, Board Expenses                         |                     | \$ 3,000               | \$ 3                 | \$ 3                | \$ 2,997          |
| CDOT Staff Costs                                      |                     | \$ 87,284              | \$ 4,883             | \$ 10,185           | \$ 77,099         |
| <b>Total Expenditures</b>                             |                     | <b>\$ 415,844</b>      | <b>\$ 4,886</b>      | <b>\$ 10,188</b>    | <b>\$ 405,656</b> |



MONTHLY PROGRESS REPORT – August 2009

The next table illustrates expenses specific only to the I-25/HOV Express Lanes.

| ITEM   | Estimated Revenues  | Estimated Expenditures | Current Month Actual | Year-to-Date Actual | Remaining           |
|--|---------------------|------------------------|----------------------|---------------------|---------------------|
| <b>I -25 Express Lanes</b>                   |                     |                        |                      |                     |                     |
| <b>Revenues</b>                              |                     |                        |                      |                     |                     |
| Estimated Toll Revenues                      | \$ 2,000,000        |                        | \$ 195,228           | \$ 374,326          | \$ 1,625,675        |
| Estimated Misc. Revenues                     | \$ 100,000          |                        | \$ 8,890             | \$ 20,634           | \$ 79,366           |
| Interest Earnings                            | \$ 86,500           |                        | \$ 6,964             | \$ 13,201           |                     |
| Loan from Transportation Commission          | \$ -                |                        | \$ -                 | \$ -                | \$ -                |
| Carry Forward Balance from Prior Fiscal Year | \$ 3,251,834        |                        | \$ -                 | \$ 3,251,834        |                     |
| <b>Total Revenues</b>                        | <b>\$ 5,438,334</b> |                        | <b>\$ 211,082</b>    | <b>\$ 408,161</b>   | <b>\$ 5,030,173</b> |
| <b>Expenditures</b>                          |                     |                        |                      |                     |                     |
| Snow Plow Operations (T-P Enterprises)       |                     | \$ 455,575             | \$ -                 | \$ 21,730           | \$ 433,845          |
| Colorado State Patrol                        |                     | \$ 75,000              | \$ -                 | \$ 5,975            | \$ 69,025           |
| E-470 Oversight, Management, & Operations    |                     | \$ 430,000             | \$ 36,424            | \$ 36,424           | \$ 393,576          |
| E-470 Maintenance Tech.                      |                     | \$ 83,166              | \$ 8,977             | \$ 8,977            | \$ 74,189           |
| Non-revenue transponders                     |                     | \$ 5,000               | \$ -                 | \$ -                | \$ 5,000            |
| IBTTA Dues (25% of \$4,000)                  |                     | \$ 1,000               | \$ -                 | \$ -                | \$ -                |
| Marketing/ Outreach                          |                     | \$ 10,300              | \$ -                 | \$ -                | \$ 10,300           |
| User Survey                                  |                     | \$ -                   | \$ -                 | \$ -                | \$ -                |
| CDOT Staff Costs                             |                     | \$ 68,731              | \$ 2,156             | \$ 5,040            | \$ 63,691           |
| TC Loan Repayment                            |                     | \$ 301,822             | \$ -                 | \$ -                | \$ 301,822          |
| Contingency for Major Improvements           |                     | \$ 400,000             | \$ -                 | \$ -                | \$ 400,000          |
| Board Contingency                            |                     | \$ 250,000             | \$ -                 | \$ -                | \$ 250,000          |
| Equipment Replacement Plan                   |                     |                        |                      | \$ -                |                     |
| 1. Gates                                     |                     | \$ 105,000             | \$ -                 | \$ -                | \$ 105,000          |
| 2. Variable Message Sign Upgrades            |                     | \$ 1,485               | \$ -                 | \$ -                | \$ 1,485            |
| 3. Cameras                                   |                     | \$ 8,994               | \$ -                 | \$ -                | \$ 8,994            |
| Region 6 Maintenance Costs                   |                     | \$ 129,867             | \$ 5,631             | \$ 5,631            | \$ 124,236          |
| Courtesy Patrol                              |                     | \$ 120,000             | \$ 9,862             | \$ 9,862            | \$ 110,139          |
| <b>Total Expenditures</b>                    |                     | <b>\$ 2,445,940</b>    | <b>\$ 63,049</b>     | <b>\$ 93,639</b>    | <b>\$ 2,352,301</b> |

**4.0 INCIDENTS**

During the month of August, no major incidents occurred.

**5.0 ENFORCEMENT**

Law enforcement activities during FY 2010 are shown in the table below.

| COLORADO STATE PATROL MANUAL CITATIONS |       |      |     |           |          |       |                   |
|--|-------|------|-----|-----------|----------|-------|-------------------|
|  | Total | Toll | HOV | Hazardous | Seatbelt | Other |                   |
| <b>Jul 09</b>                          | 103   | 11   | 9   | 22        | 3        | 24    | 0 felony, 0 misd. |
| <b>Aug 09</b>                          | 122   | 22   | 22  | 24        | 7        | 32    | 0 felony, 0 misd. |



## 6.0 OPERATIONAL ISSUES

During the month of August, no operational issues occurred.