



MONTHLY PROGRESS REPORT

MARCH 2009





TABLE OF CONTENTS

	<u>PAGE</u>
Introduction	1
1.0 Volumes and Lane Usage	1
2.0 Bus Travel Times	6
3.0 Revenues and Expenditures	7
4.0 Incidents	10
5.0 Enforcement	10
6.0 Operational Issues	10

TABLES

March 2009 Traffic Data Summary	1
Peak Period Traffic Data (AM – Inbound)	4
Peak Period Traffic Data (PM – Outbound)	4
AM and PM Peak Hour Traffic	5
15 Minute Counts at 19 th Street	5
FY 09 CTE General Administrative Expenditures – March 2009	8
FY 09 I-25 HOV/Express Lanes Expenditures – March 2009	9
Colorado State Patrol Manual Citations	10

FIGURES

March 2009 Daily Traffic Volumes	2
Monthly Traffic Volumes	2
FY 08/09 Traffic Comparisons	3
19 th Street Counts	5
March 2009 Bus Travel Time Performance	6
FY 2009 Monthly Estimated Toll Revenue vs. Actual	7
FY 08/09 Revenue Comparisons	7



INTRODUCTION

This report contains information regarding traffic volumes and lane usage, bus travel times, revenues and expenditures, law enforcement activities, and incidents which may have impacted operations or revenues during the month of March 2009.

1.0 VOLUMES AND LANE USAGE

During March 2009, recorded use of the I-25 HOV/Express Lanes (including both HOV and toll-paying vehicles), increased to 282,188. This represents a 7.62% increase from 262,205 in February and a 1.44% increase from 278,181 in January.

The highest traffic volume recorded since opening was in October 2007, at 355,308.

The March summary of traffic data for both Tolled Express and HOV lanes follows. Data includes weekend and non-peak traffic.

Due to implementation of License Plate Tolling (LPT), the Traffic Data Summary table now displays Express Tolling, Violations, and LPT in separate columns. License plate tolls are presumed to be customers until such time that a bill is not paid. After a period of time, they move to the violation process.

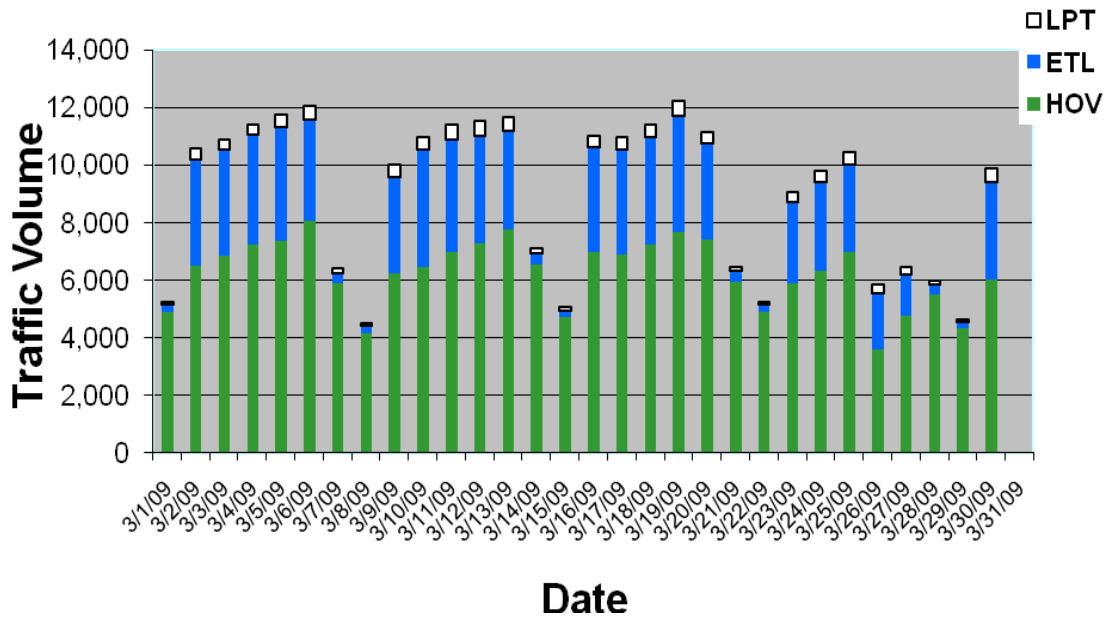
March 2009 Traffic Data Summary					
	Express	HOV	Violations	LPT	Total
Total Monthly Traffic	77,675	194,074	431	10,008	282,188
Maximum Daily Traffic	4,078	8,044	33	550	12,217
Average Daily Traffic	3,408	6,696	19	406	10,528
Avg Weekday AM Peak Hour	392	528	2	26	948
Avg Weekday PM Peak Hour	287	643	2	46	978
Avg Weekday AM Peak Period	1,568	2,114	9	103	3,793
Avg Weekday PM Peak Period	1,149	2,574	7	185	3,914

* 6:00 AM – 10:00 AM

** 3:00 PM – 7:00 PM

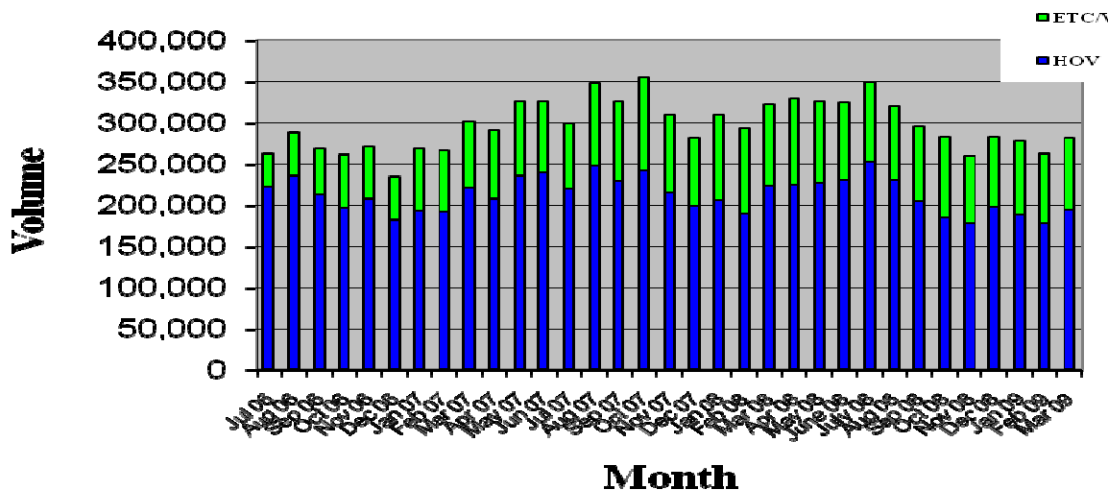
Daily and monthly traffic volumes are illustrated in the following figures. LPT and violation counts have been combined into a third tier for the Daily Traffic Volumes table.

MARCH 2009 DAILY TRAFFIC VOLUMES



The Monthly Traffic Volumes chart below shows the ETL, Violations, and LPT combined.

MONTHLY TRAFFIC VOLUMES

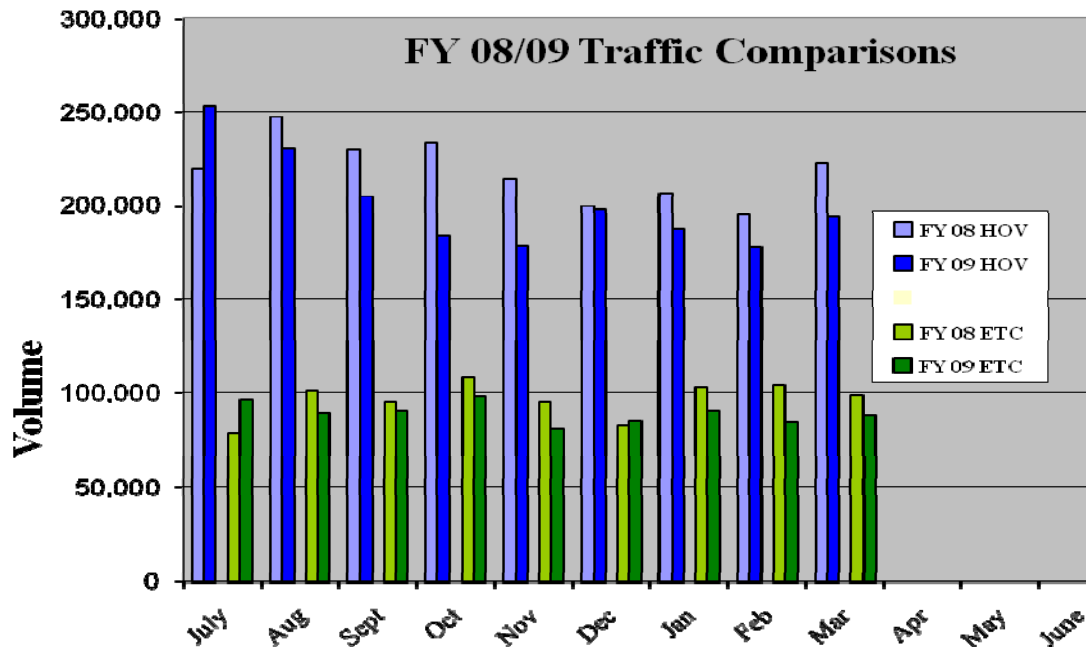




HOV lane usage during March 2009 rose to 194,074; up from 177,844 in February 2009. This amount is down from 222,809 in March 2008 and represents a decline of 28,735, or 12.90% since one year ago.

Toll lane usage during March 2009 rose to 88,114; up from 84,361 in February 2009. March's toll lane usage amount includes ETL, LPT, and violations. This amount is down from 98,689 in March 2008 and represents a decrease of 10,575, or 10.71% since one year ago.

Current fiscal year traffic volumes compared to the previous fiscal year's volumes are represented in the following figure.





MONTHLY PROGRESS REPORT – March 2009

Detailed data for peak period traffic volumes are found in the following tables.

Morning Rush Period											
	Total Peak Period					Avg Per Hour					
	Weekday	Express	HOV	Violation	LPT	Total	Express	HOV	Violation	LPT	Total
2nd	Monday	1884	2459	13	105	4461	471	615	3	26	1115
	Tuesday	1870	2591	15	103	4579	468	648	4	26	1145
	Wednesday	1929	2603	14	113	4659	482	651	4	28	1165
	Thursday	2029	2589	16	120	4754	507	647	4	30	1188
	Friday	1578	2242	15	106	3941	394	560	4	26	985
9th	Monday	1775	2318	10	115	4218	444	580	2	29	1054
	Tuesday	2531	2528	11	198	5268	633	632	3	50	1317
	Wednesday	2036	2475	17	139	4667	509	619	4	35	1167
	Thursday	1901	2446	11	129	4487	475	612	3	32	1122
	Friday	1598	2234	9	119	3960	400	558	2	30	990
16th	Monday	1851	2499	9	114	4473	463	625	2	28	1118
	Tuesday	1914	2644	7	121	4686	478	661	2	30	1172
	Wednesday	1913	2559	3	109	4584	478	640	1	27	1146
	Thursday	2002	2652	7	118	4779	500	663	2	30	1195
	Friday	1612	2540	4	103	4259	403	635	1	26	1065
23rd	Monday	1466	2031	9	104	3610	366	508	2	26	902
	Tuesday	1505	2087	9	106	3707	376	522	2	26	927
	Wednesday	1442	2161	8	103	3714	360	540	2	26	928
	Thursday	940	1696	5	77	2718	235	424	1	19	680
	Friday	710	1143	2	73	1928	178	286	0	18	482
30th	Monday	2163	2345	6	174	4688	541	586	2	44	1172
	Tuesday	1867	2441	7	111	4426	467	610	2	28	1106

Afternoon Rush Period											
	Total Peak Period					Avg Per Hour					
	Weekday	Express	HOV	Violation	LPT	Total	Express	HOV	Violation	LPT	Total
2nd	Monday	1508	2783	14	171	4476	377	696	4	43	1119
	Tuesday	1427	2921	11	147	4506	357	730	3	37	1126
	Wednesday	1406	3015	9	162	4592	352	754	2	40	1148
	Thursday	1475	3131	16	199	4821	369	783	4	50	1205
	Friday	1515	3598	9	237	5359	379	900	2	59	1340
9th	Monday	1213	2678	10	204	4105	303	670	2	51	1026
	Tuesday	1166	2608	5	188	3967	292	652	1	47	992
	Wednesday	1459	3032	6	291	4788	365	758	2	73	1197
	Thursday	1449	3105	5	273	4832	362	776	1	68	1208
	Friday	1360	3360	6	237	4963	340	840	2	59	1241
16th	Monday	1391	2956	6	217	4570	348	739	2	54	1142
	Tuesday	1443	3103	6	256	4808	361	776	2	64	1202
	Wednesday	1438	3117	8	243	4806	360	779	2	61	1202
	Thursday	1621	3221	10	295	5147	405	805	2	74	1287
	Friday	1327	3346	9	213	4895	332	836	2	53	1224
23rd	Monday	1049	2606	4	189	3848	262	652	1	47	962
	Tuesday	1169	2793	5	194	4161	292	698	1	48	1040
	Wednesday	1207	2929	5	226	4367	302	732	1	56	1092
	Thursday	150	339	0	22	511	38	85	0	6	128
	Friday	500	1981	2	96	2579	125	495	0	24	645
30th	Monday	922	2494	1	235	3652	230	624	0	59	913
	Tuesday	1396	3023	8	324	4751	349	756	2	81	1188



The following table represents monthly averages of peak hour traffic during the current fiscal year.

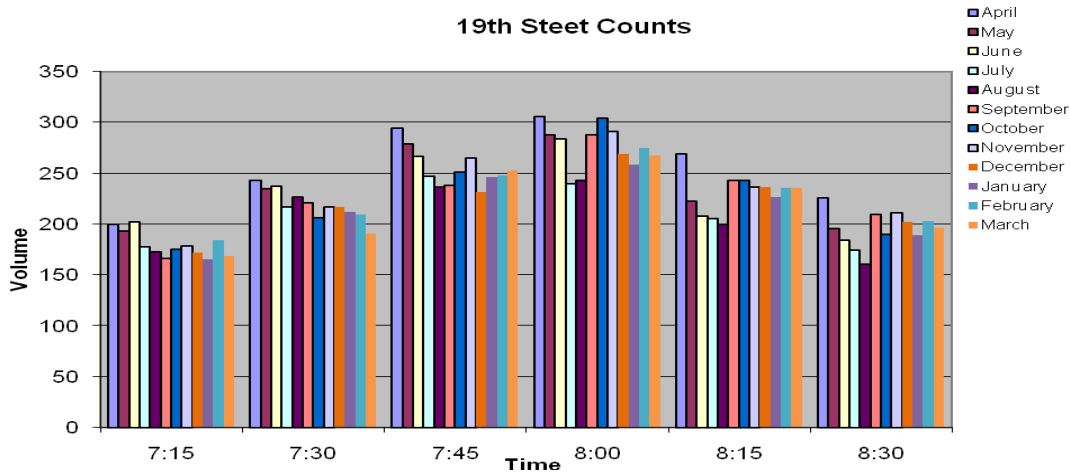
	AM ETL 7:00-8:00	AM HOV 7:00-8:00	PM HOV 5:00-6:00	PM ETL 5:00-6:00	AM Total 7:00-8:00	PM Total 5:00-6:00	Capacity
Jul 08	721	1,012	1,116	561	1,733	1,677	3,000
Aug 08	732	1,073	1,035	555	1,805	1,590	3,000
Sep 08	797	1,065	966	552	1,862	1,518	3,000
Oct 08	826	1,076	1,030	613	1,902	1,643	3,000
Nov 08	759	965	958	560	1,724	1,518	3,000
Dec 08	620	828	909	519	1,448	1,428	3,000
Jan 09	708	901	940	603	1,744	1,665	3,000
Feb 09	756	987	966	599	1,757	1,581	3,000
Mar 09	697	917	939	583	1,615	1,523	3,000

Fifteen minute counts at the 19th Street exit have been collected since April 2008. Counts are conducted manually only during the first full week of each month, providing a representative sample.

A table containing 15-minute counts at 19th Street follows:

15-MINUTE COUNTS AT 19 TH STREET						
	Monday 2-Mar	Tuesday 3-Mar	Wednesday 4-Mar	Thursday 5-Mar	Friday 6-Mar	Average
7:00 - 7:15	189	179	148	148	182	169
7:15 - 7:30	184	204	170	182	217	191
7:30 - 7:45	250	286	237	221	273	253
7:45 - 8:00	283	274	294	212	275	268
8:00 - 8:15	257	249	271	156	247	236
8:15 - 8:30	216	178	241	150	200	197

As can be seen on the following graph for 19th St., counts continue to be lower than the highest volume in April 2008.



2.0 BUS TRAVEL TIMES

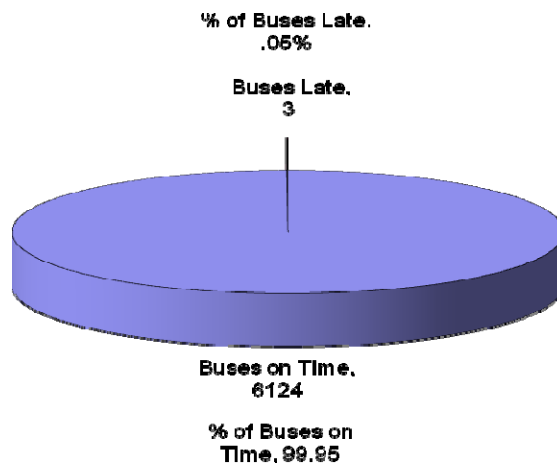
The IGA between CDOT and RTD prescribes triggers to determine if there is any degradation to travel times for buses and carpools. These triggers are:

- Exceeding travel time for more than one bus in an hour (provided the excess is not attributable to a stall, crash and closure of the lane, or special event).
- Exceeding the travel time for more than one day per week for three weeks in a row.
- Predictable patterns.

Three bus delays occurred on the 26th and 27th of March due to a severe storm. During the remainder of the month, fifty-five buses traveled the HOT lanes between 7 minutes and 45 seconds and 8 minutes and 45 seconds. On March 10th, three buses exceeded the 8 minute 45 second time and thirty-three buses exceeded 7 minutes and 45 seconds. The actual cause of this is unknown, although the day was colder and windy but with no moisture. The vehicle counts were averaged for that day and the entire morning commute was slower than normal (6:16 to 9:01).

Bus delays are depicted in the chart below. Storm days on the 26th and 27th are not included.

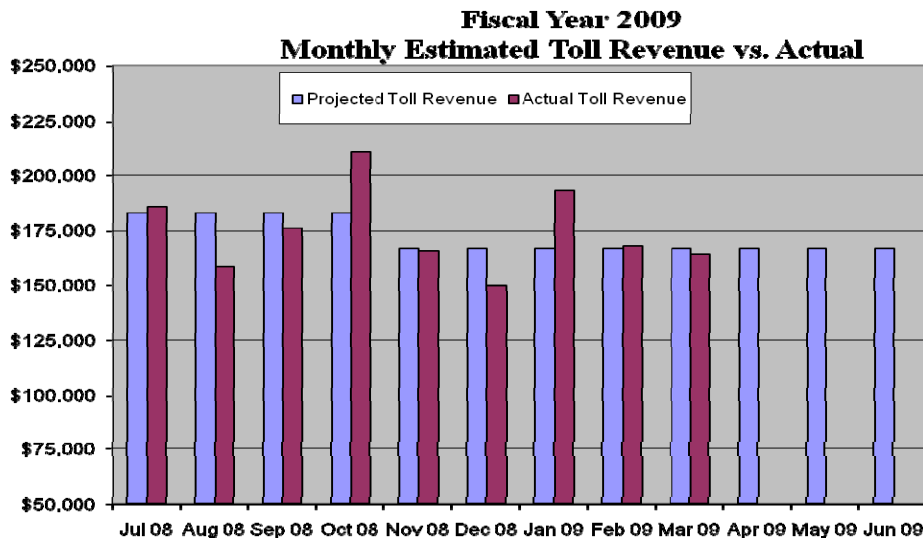
WEEKDAY BUS TRAVEL TIME
March 2009



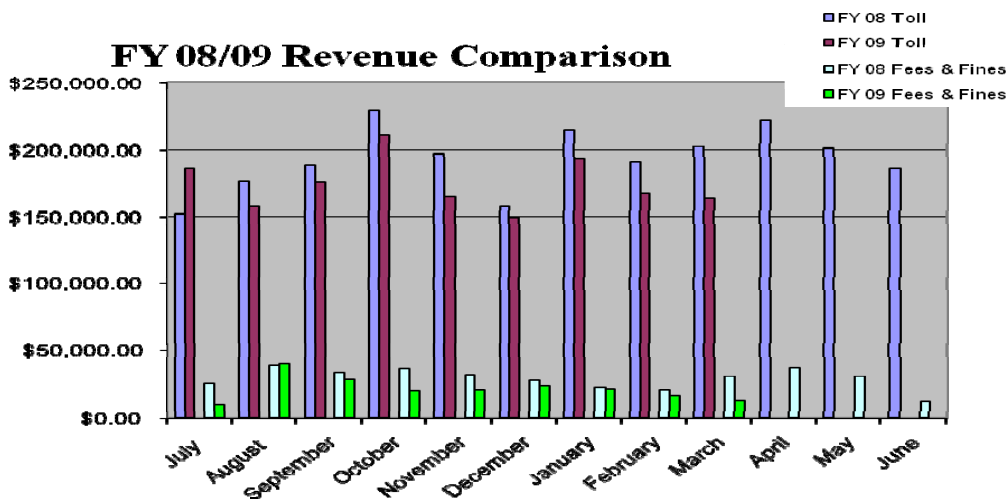
3.0 REVENUES AND EXPENDITURES

March 2009 toll revenues decreased to \$164,006.75; down from \$167,743.00 in February. The total of all revenues, including tolls, fees, and fines, was \$177,168.50. Fees and fines collected this month decreased to \$13,161.75; down from \$16,451.15 in February. The amount of fees and fines collected in March represents 7.43% of March’s total revenues. (Reminder: Some revenues that were posted may have been transactions, fees, and fines reconciled from previous months’ transactions.) Reporting of revenue from license plate tolling will begin in April.

The following figure shows the projected vs. actual toll revenue to date for Fiscal Year 2009.



Current fiscal year revenues compared to the previous fiscal year’s revenues are illustrated in the following figure.





MONTHLY PROGRESS REPORT – March 2009

The following table illustrates CTE general administrative expenditures through March 2009.

ITEM	Revised Estimated Revenues	Revised Estimated Expenditures	Current Month Actual	Year-to-Date Actual	Remaining
CTE Administrative Budget					
<u>Revenues</u>					
Interest Earnings	\$ 66,300		\$ 4,095	\$ 44,743	\$ 21,557
Carry Forward Balance from prior Fiscal Year	\$ 1,938,450		\$ -	\$ 1,938,450	\$ -
Total Revenues	\$ 2,004,750		\$ 4,095	\$ 1,983,193	\$ 21,557
<u>Expenditures</u>					
General Engineering Consultant (8200)		\$ 165,000	\$ -	\$ -	\$ 165,000
Traffic and Revenue Consultant ((8200)		\$ 100,000	\$ -	\$ -	\$ 100,000
Financial Advisor (8200)		\$ 104,144	\$ 304	\$ 15,013	\$ 89,132
Misc. (Marketing/Research, Advertisement) (8200)		\$ 40,000	\$ 487	\$ 3,731	\$ 36,269
IBTTA Dues & Conference Registration (8100)		\$ 3,000	\$ -	\$ 2,050	\$ 950
Misc. (Travel, Meals, Board Expenses) (8100)		\$ 3,000	\$ 23	\$ 1,304	\$ 1,696
CDOT/ CTE Staff Costs (8100)		\$ 105,842	\$ 4,665	\$ 57,643	\$ 48,199
Total Expenditures		\$ 520,986	\$ 5,479	\$ 79,741	\$ 441,245



MONTHLY PROGRESS REPORT – March 2009

The next table illustrates expenses specific only to the I-25/HOV Express Lanes.

ITEM	Revised Estimated Revenues	Revised Estimated Expenditures	Current Month Actual	Year-to-Date Actual	Remaining
I 25 Express Lanes (8500)					
Revenues					
Estimated Toll Revenues	\$ 2,000,000		\$ 164,007	\$ 1,575,697	\$ 424,304
Estimated Misc. Revenues	\$ 200,000		\$ 13,162	\$ 192,688	\$ 7,312
Interest Earnings	\$ 86,500		\$ 7,014	\$ 65,436	\$ 21,064
Loan from Transportation Commission	\$ -		\$ -	\$ -	\$ -
Carry Forward Balance from prior Fiscal Year	\$ 2,225,156		\$ -	\$ 2,225,156	\$ -
Total Revenues	\$ 4,511,656		\$ 184,183	\$ 4,058,977	\$ 452,679
Expenditures					
Contracted Snow Plow Operations (T-P Enterprises)		\$ 455,575	\$ 29,631	\$ 308,511	\$ 147,064
Colorado State Patrol		\$ 77,250	\$ 4,687	\$ 40,711	\$ 36,539
E-470 Oversight, Management, Operations		\$ 430,000	\$ -	\$ 167,367	\$ 262,633
E-470 Oversight and Management (Transactions)				\$ -	\$ -
E-470 Maintenance Tech.		\$ 83,166	\$ -	\$ 37,011	\$ 46,155
Toll System Maintenance - Hybrid Software Dev.		\$ -	\$ -	\$ (10,103)	\$ 10,103
VMS, Fiber, Travel Time, Surveillance		\$ -	\$ -	\$ -	\$ -
Non-revenue transponders		\$ 5,000	\$ -	\$ -	\$ 5,000
IBTTA Dues (25% of Total)		\$ 1,000	\$ -	\$ 475	\$ 525
Marketing/ Outreach		\$ 10,300	\$ -	\$ -	\$ 10,300
User Survey		\$ 30,000	\$ -	\$ 27,603	\$ 2,397
CDOT/ CTE Staff Costs		\$ 64,436	\$ 3,454	\$ 26,684	\$ 37,752
TC Loan Repayment		\$ 301,822	\$ -	\$ -	\$ 301,822
Contingency for Major Improvements		\$ 600,000	\$ -	\$ -	\$ 600,000
CTE Board Contingency		\$ 250,000	\$ -	\$ -	\$ 250,000
Capital Plan:				\$ -	\$ -
1. Controller Cabinet Modifications		\$ 10,000	\$ -	\$ -	\$ 10,000
2. Gates		\$ 378,000	\$ -	\$ -	\$ 378,000
3. Software Upgrade for Gates		\$ 12,500	\$ -	\$ -	\$ 12,500
4. Variable Message Sign Upgrades		\$ 20,000	\$ -	\$ -	\$ 20,000
5. Joint Replacement/Deck Repair		\$ 18,000	\$ -	\$ -	\$ 18,000
6. Dynamic Pricing Upgrade		\$ -	\$ -	\$ -	\$ -
Region 6 Maintenance Costs		\$ 170,000	\$ 5,249	\$ 67,074	\$ 102,926
Courtesy Patrol		\$ 120,000	\$ 8,965	\$ 76,243	\$ 43,757
Maintenance Response Vehicles		\$ -	\$ -	\$ -	\$ -
Total Expenditures		\$ 3,037,049	\$ 51,986	\$ 741,575	\$ 2,295,474



4.0 INCIDENTS

No unusual incidents occurred during the month of March.

5.0 ENFORCEMENT

Law enforcement activities during FY 09 are shown in the table below.

COLORADO STATE PATROL MANUAL CITATIONS							
	Total	Toll	HOV	Hazardous	Seatbelt	All Other	
Jul 08	99	16	16	19	9	23	0 felony, 0 misd.
Aug 08	68	9	9	21	2	24	0 felony, 0 misd.
Sep 08	113	4	5	20	1	18	0 felony, 0 misd.
Oct 08	147	4	19	23	11	12	1 felony, 0 misd.
Nov 08	115	8	10	25	3	16	0 felony, 0 misd.
Dec 08	107	10	11	21	9	20	0 felony, 1 misd.
Jan 09	113	4	16	12	14	8	0 felony, 0 misd.
Feb 09	104	4	10	17	16	9	0 felony, 0 misd.
Mar 09	107	5	12	20	4	13	0 felony, 0 misd.

6.0 OPERATIONAL ISSUES

No unusual operational issues occurred during the month of March.