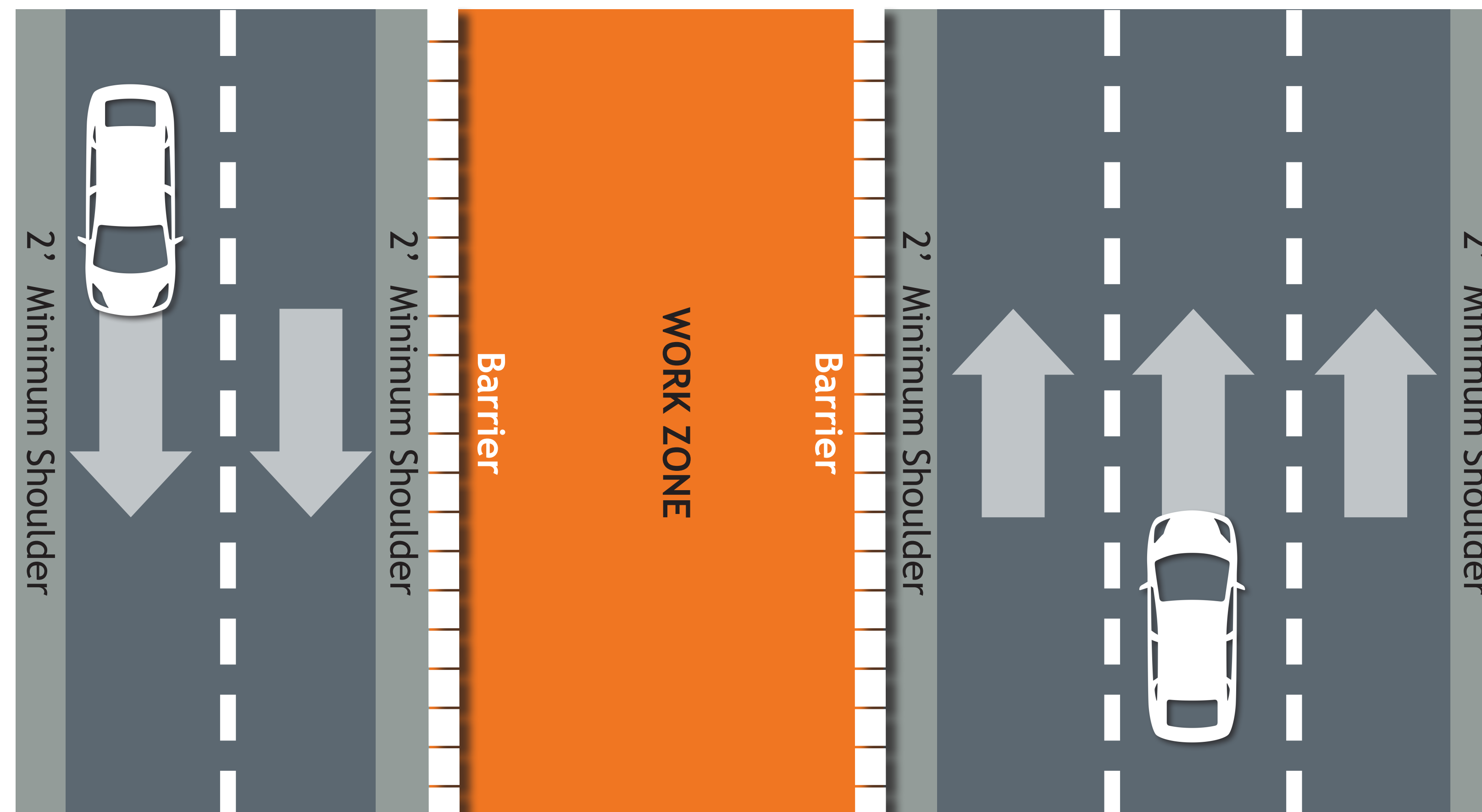
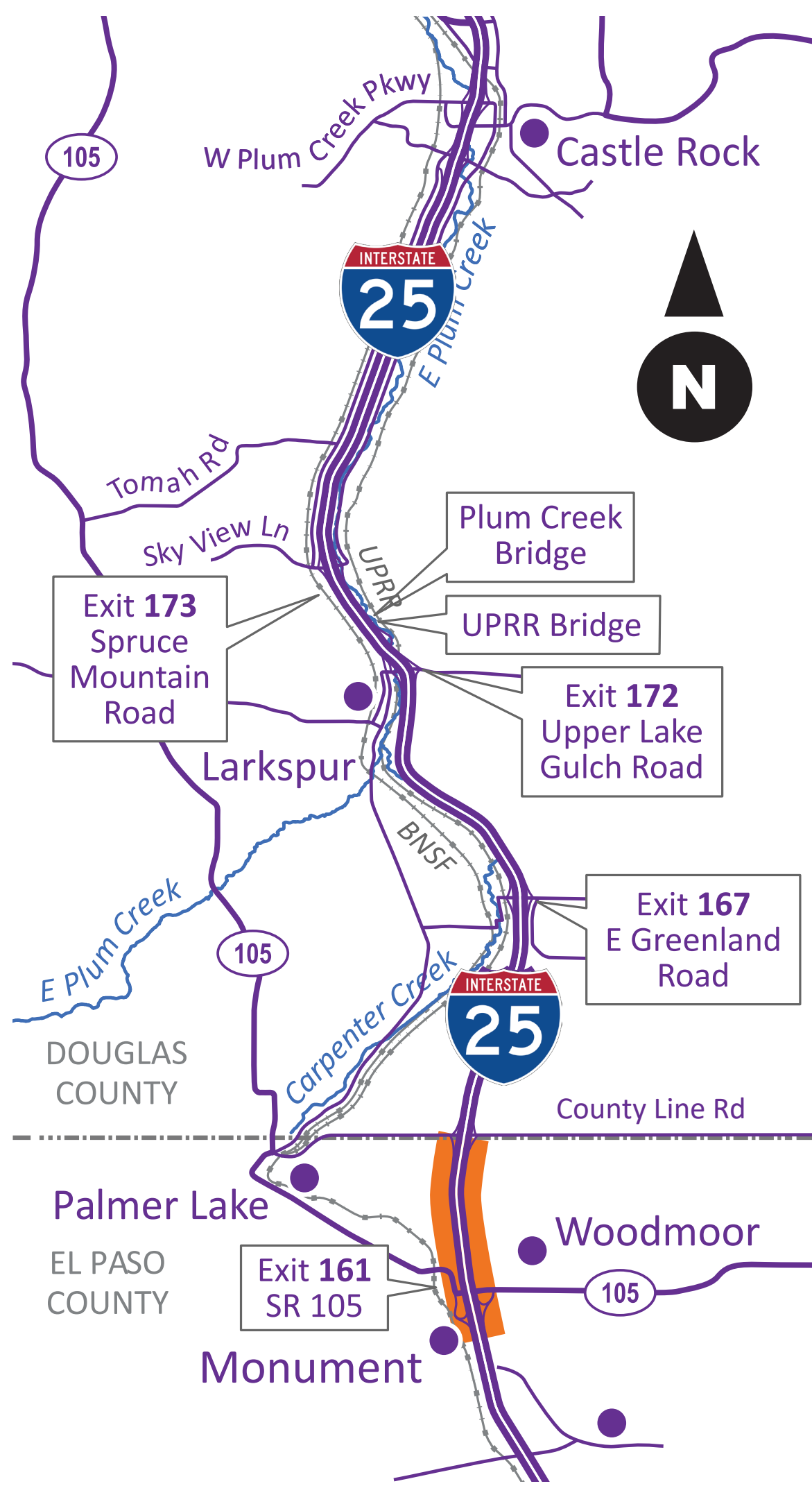




# I-25 South Gap Project Monument–Castle Rock

## South Section : Phase 1 *Monument to County Line Road*

Similar to work on the northern end of the project, work on the southern end will require traffic shifts on I-25.



- Construction Activities**
- Inside widening, earthwork and asphalt
  - Storm sewer pipe
  - Wildlife crossing at MP 162.5 (½ of structure)
  - Median barrier and retaining walls
  - Temporary pavement to accommodate traffic

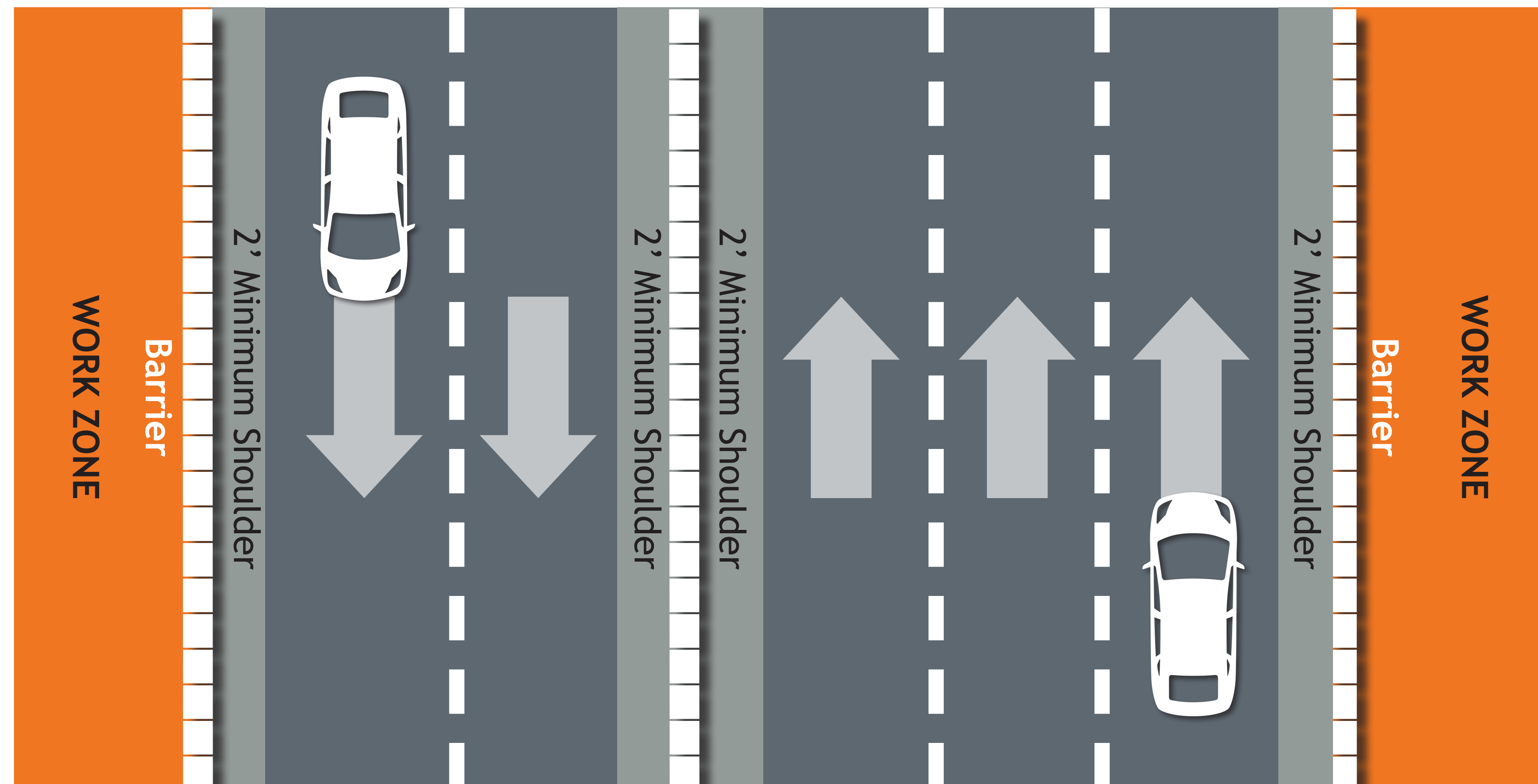
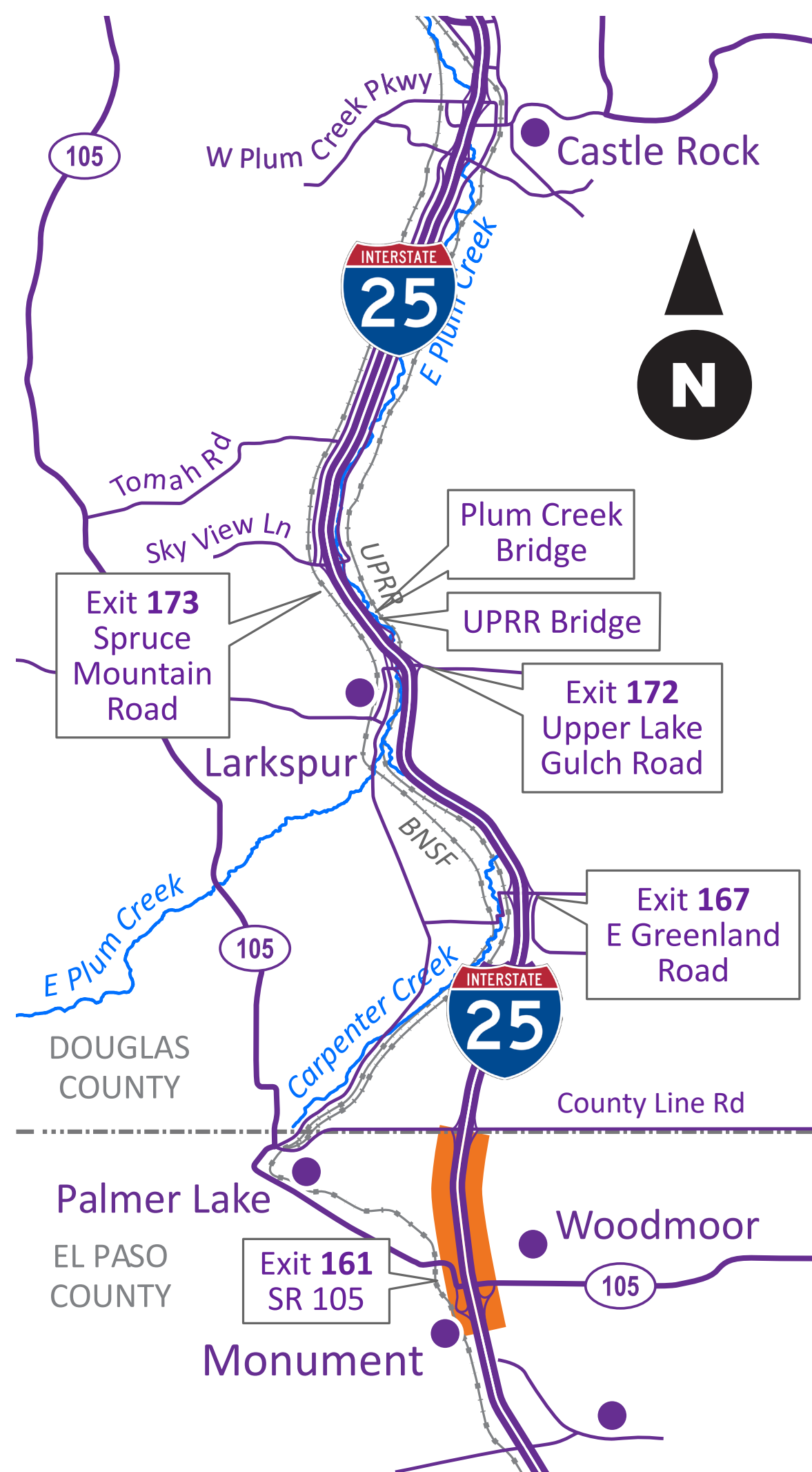




# I-25 South Gap Project Monument–Castle Rock

## South Section : Phase 2 *Monument to County Line Road*

Overnight single lane closures will be necessary so crews can place concrete barrier to designate the construction work zone.



- Construction Activities**
- Outside widening, earthwork and asphalt
  - Storm sewer pipe
  - Wildlife crossing at MP 162.5 (½ of structure)
  - Outside Walls

