



# MIDDLE SECTION: GREENLAND ROAD TO SKY VIEW LANE

## ABOUT THE MIDDLE SECTION

In addition to new Express Lanes and wider shoulders, this section of the Interstate 25 South Gap project also includes bridge replacements at Upper Lake Gulch Road, Spruce Mountain Road and Plum Creek. It also includes one new wildlife underpass and rehabilitation of the bridge over the Union Pacific Railroad near Upper Lake Gulch Road. These structures combined with significant grade separations make it the most complex section of the 18-mile project.

Two lanes of traffic will be maintained in each direction during daytime peak hours. However, overnight lane closures and extended closures of some ramps will be required for to safely complete the work.

## MIDDLE SECTION TRAFFIC IMPACTS

### Greenland Road to Upper Lake Gulch Road / Spruce Mountain Road to Sky View Lane

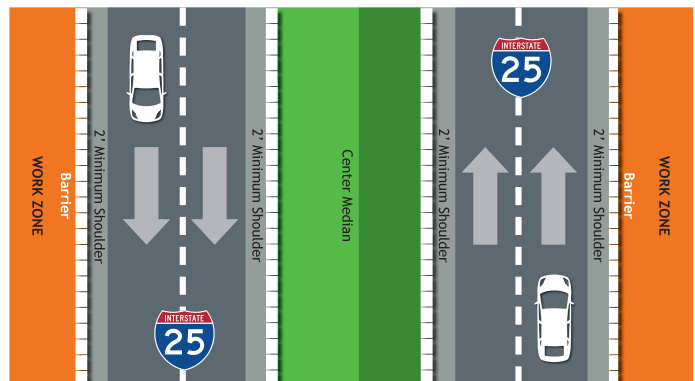
In these two sections of I-25, construction includes roadway widening, earthwork, asphalt paving, storm drainage installation, construction of the new wildlife crossing, barrier and retaining walls.

For the safety of crews and motorists, traffic will first be shifted toward the median so crews can work on the outside shoulders. Then, it switches. (See illustrations to the right.)

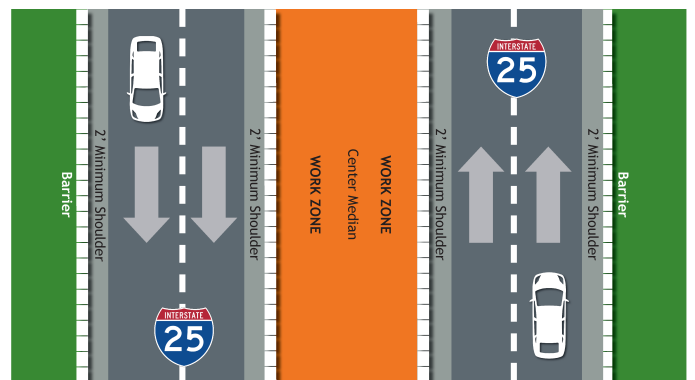
Drivers can expect overnight lane closures, narrower lanes and shoulders, and the speed limit to be reduced to 65 mph.

### Upper Lake Gulch Road to Spruce Mountain Road

Work in this three-quarter-mile section includes the reconstruction of three bridges: Upper Lake Gulch Road, Spruce Mountain Road and East Plum Creek, as well as rehabilitation of the bridge over the Union Pacific Railroad.



5.5 miles of the 6.3-mile corridor will be in this alignment.



5.5 miles of the 6.3-mile corridor will be in this alignment.

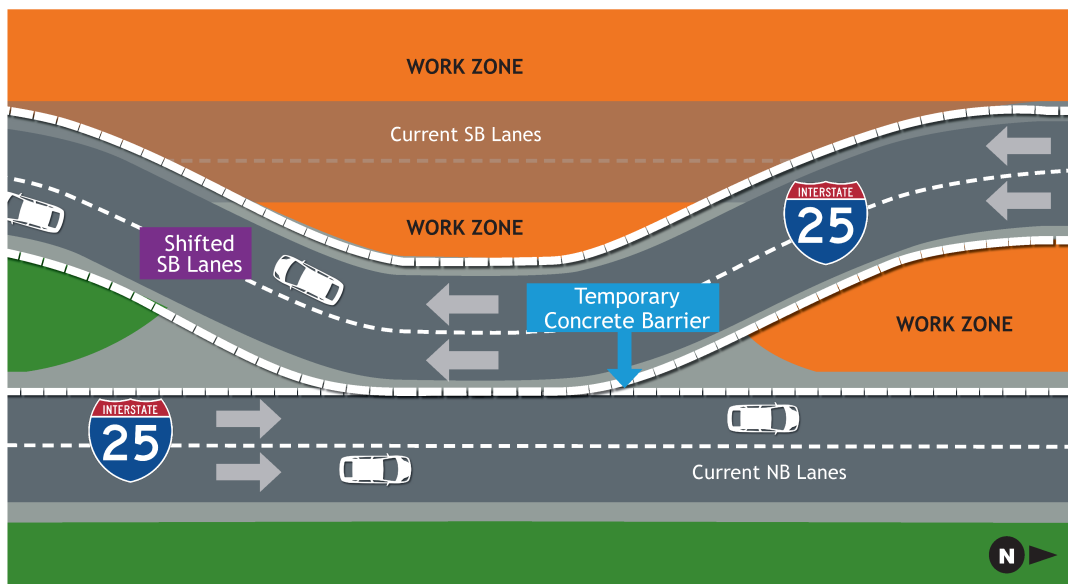
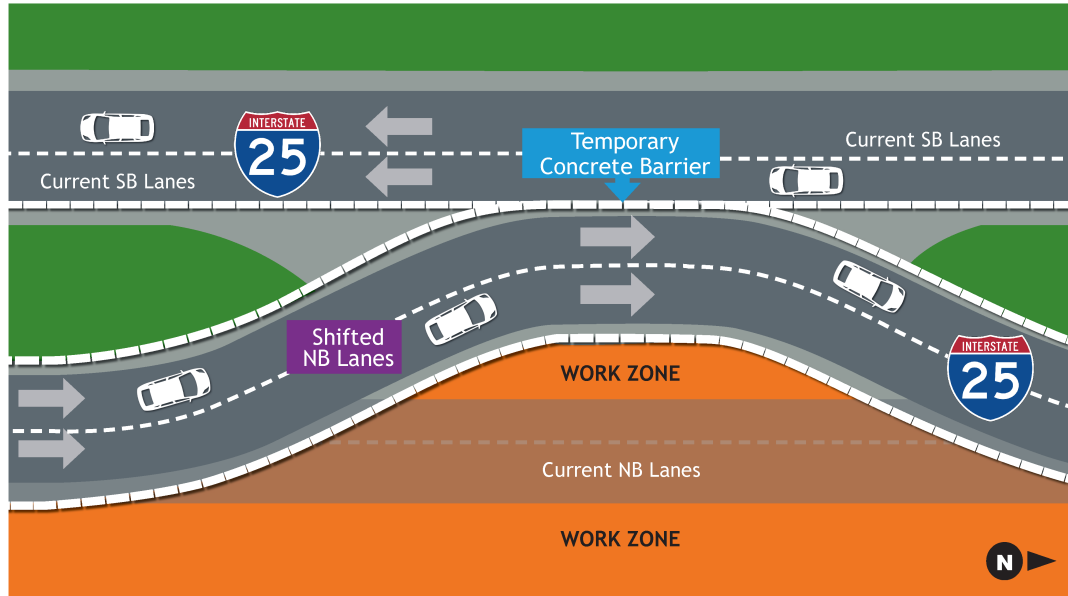




# I-25 South Gap Project Monument–Castle Rock

## FACT SHEET

For this work to occur safely, traffic will be shifted to one side of the highway, separated by a concrete barrier. Then, it will be shifted to the other. Drivers can expect extended closures of the Spruce Mountain Road and Upper Lake Gulch Road ramps and overnight closures of I-25.



Crossover will stretch about three-quarters of a mile.

### CONTACT US

Project Hotline: 720-745-5435

Web: [i25gap.codot.gov](http://i25gap.codot.gov)

Sign up for email updates: [i25gap@codot.us](mailto:i25gap@codot.us)

Text alerts: Text I25GAP to 21000

Project Facebook Page: [www.facebook.com/I25SouthGapProject](http://www.facebook.com/I25SouthGapProject)

