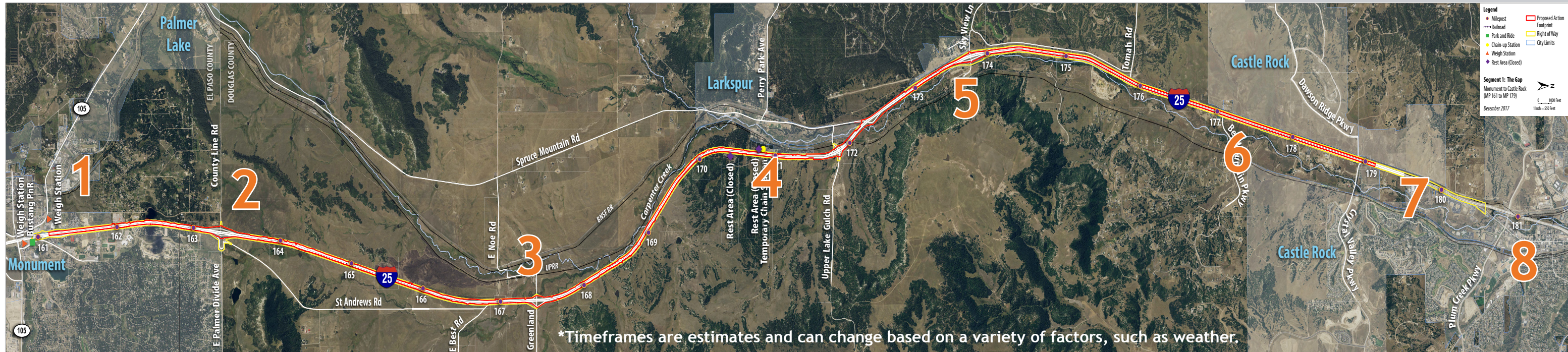


Upcoming Construction Impacts - Summer 2019



1 - Traffic Crossover near Monument Weigh Station

Improvement: Adding new lanes and wider shoulders

What to expect: Southbound I-25 traffic will shift to the northbound side with a concrete barrier between southbound and northbound I-25 traffic. This shift will require overnight lane closures to create the new pattern, which will help maintain two travel lanes in each direction.

Timeframe: June 2019, lasting for about two months. Then, all traffic will shift to the southbound side of I-25 in a similar configuration.

2 - County Line Road Ramps near Monument

Improvement: Rebuilding ramps and drainage work

What to expect: The County Line Road northbound I-25 on-ramp and southbound off-ramp will each close for up to 10 days. Detours will maintain local access.

Timeframe: July 2019

3 - Greenland Road Interchange Crossover

Improvement: Converting the one-lane box culvert into a two-lane interchange and constructing a new wildlife crossing to the north.

What to expect: As crews build this new bridge in halves, all I-25 traffic will be shifted to one side or the other, separated by a concrete barrier. This work will require periodic ramp closures. Two travel lanes in each direction will be maintained.

Timeframe: July 2019, with various crossovers expected through 2020.

4 - Work begins between Greenland Road and Sky View Lane (Tomah Road)

Improvement: New Express Lanes, three bridge replacements and one wildlife crossing

What to expect: Like the northern and southern sections, lanes will become more narrow, but two travel lanes will be maintained in each direction during peak travel times. The speed limit is 65 mph.

Timeframe: Starting now.

5 - Sky View Lane Ramp Closures and Traffic Shift

Improvement: Major drainage work

What to expect: The on-ramp from Sky View Lane (Tomah Road) to northbound I-25 will close temporarily. The East Frontage Road will also close, but not at the same time as the on-ramp. I-25 traffic will shift, separated by concrete barrier.

Timeframe: Starting in August 2019

6 - Traffic Shift Between Castle Rock and Larkspur

Improvement: Since September 2018, crews have been working in the center median, but this summer, work will shift to the outside.

What to expect: Two travel lanes will remain open in both directions during peak travel times. Watch for traffic shifts and overnight lane closures. Lanes will continue to be narrow, and shoulder space will vary.

Timeframe: Starting in August 2019. New alignment will last throughout 2019.

7 - Frontage Road Work Near Castle Rock

Improvement: Drainage work

What to expect: Daily one-way flagging on both frontage roads; overnight flagging on both frontage roads; long-term closures of sections of both frontage roads. However, both frontage roads will not be closed at the same time.

Timeframe: Flagging is underway. Full closures expected in August 2019.

8 - Re-striping on I-25 Near Plum Creek Parkway

Improvement: Southbound I-25 will be re-striped so that the two right lanes will be forced to exit at Plum Creek Parkway. This increases safety by moving the merge point outside of the construction zone.

What to expect: Overnight closures over two nights for striping and overhead sign replacement.

Timeframe: Implemented night of June 10. New striping will last throughout the duration of the project.

Watch for changing traffic patterns. Throughout the work zone, speed limits will be a maximum 65 mph. Please pay attention.