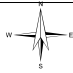
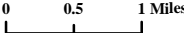









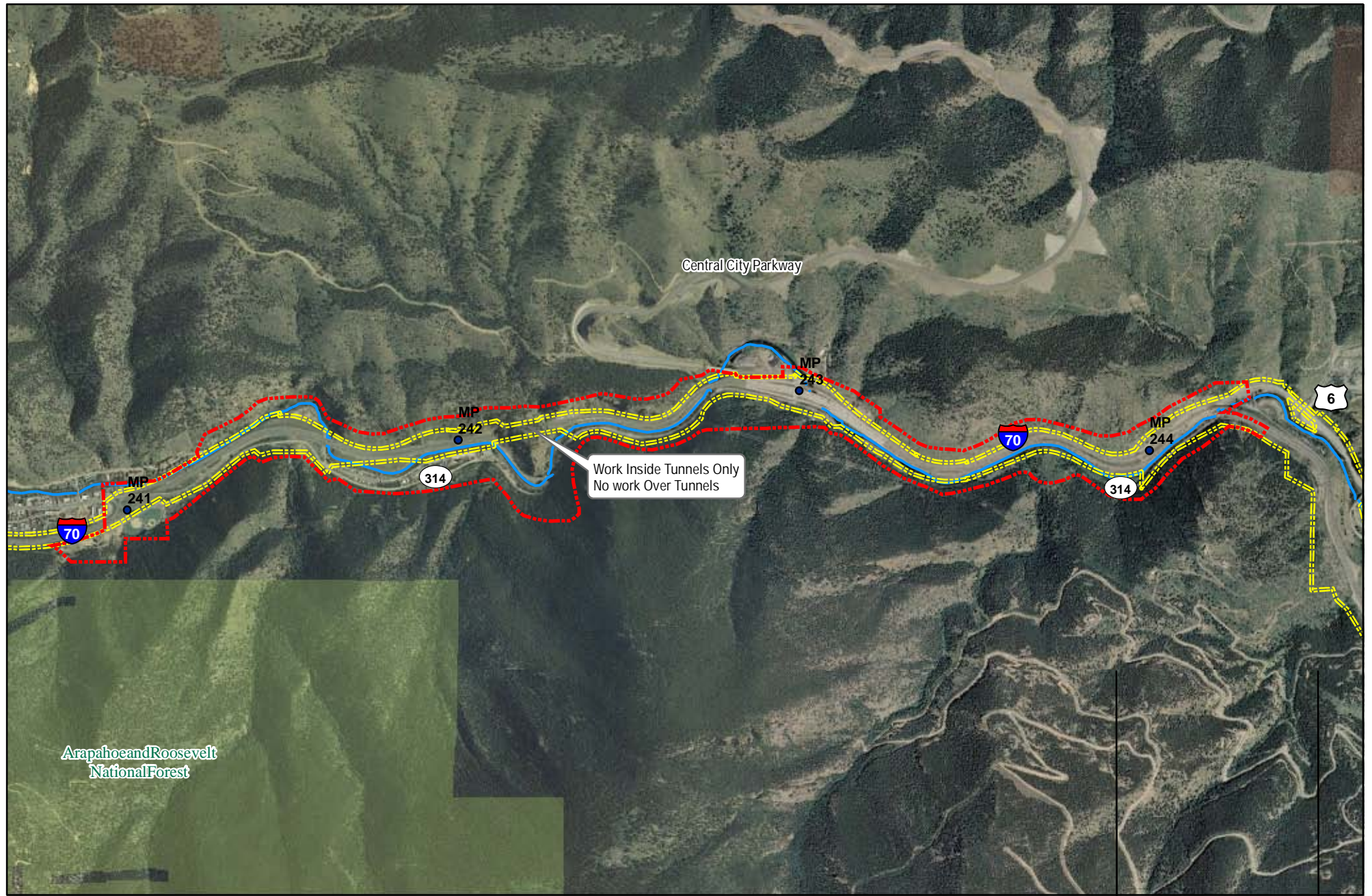


**Legend**

 	<ul style="list-style-type: none"> <li> Limited Access Highways</li> <li> Major Highways</li> <li> Highways</li> </ul>	<ul style="list-style-type: none"> <li> Mileposts</li> <li> US Forest Service</li> <li> Cities</li> </ul>	<ul style="list-style-type: none"> <li> Area of Potential Effect - Twin Tunnels</li> <li> Viewshed Area of Potential Effect - I 70 Mountain Corridor PEIS</li> </ul>		<p><b>Twin Tunnels</b>  <b>Environmental Assessment</b>  <b>September 2011</b> <small>Vicinity Map</small>  <b>Map 1 of 14</b></p>
---	---	--	--	---	--



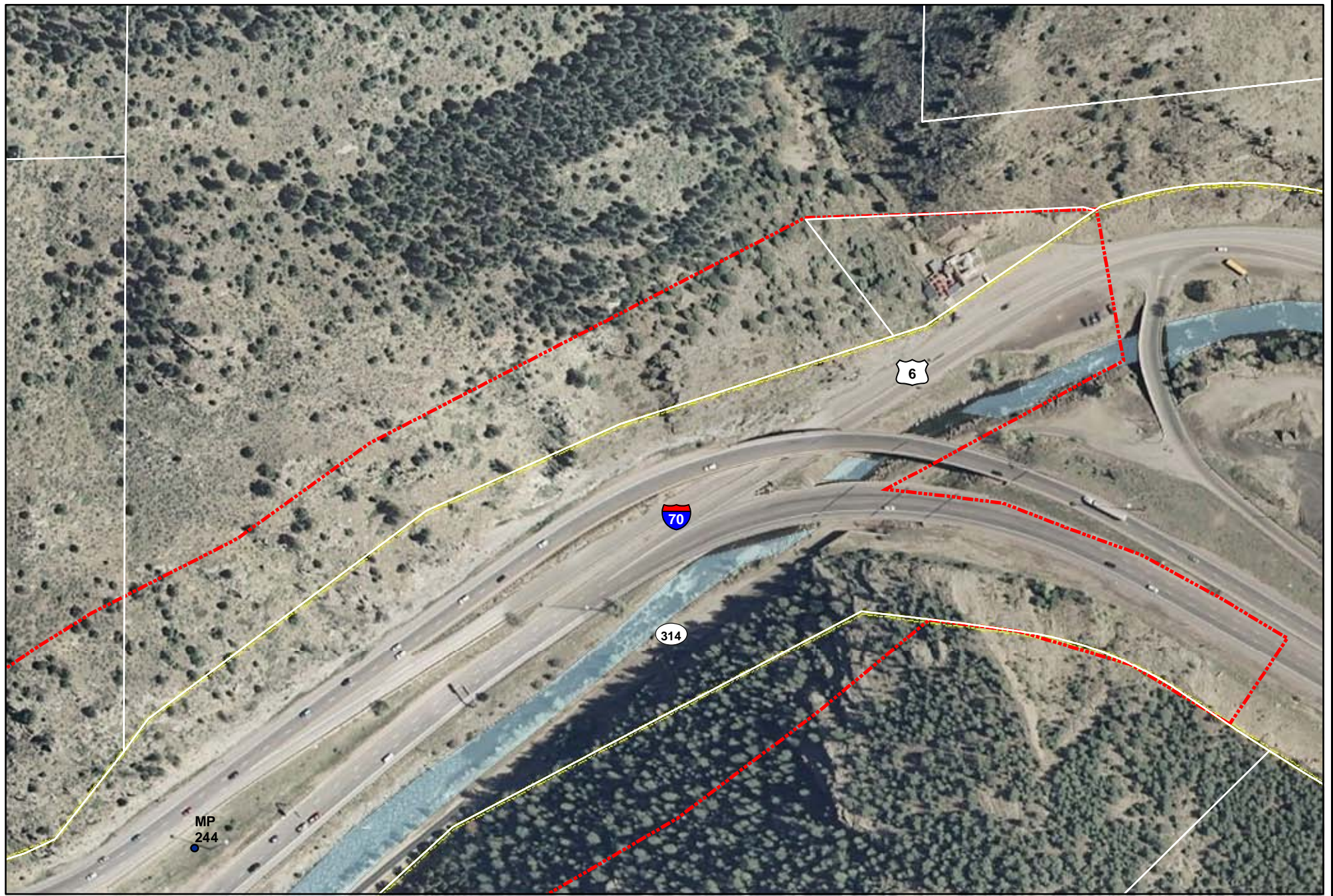


**Legend**







- Mileposts
- US Forest Service
- ~ Existing I-70 Right of Way
- ~ Area of Potential Effect
- 0 0.125 0.25 Miles
- ~ Clear Creek







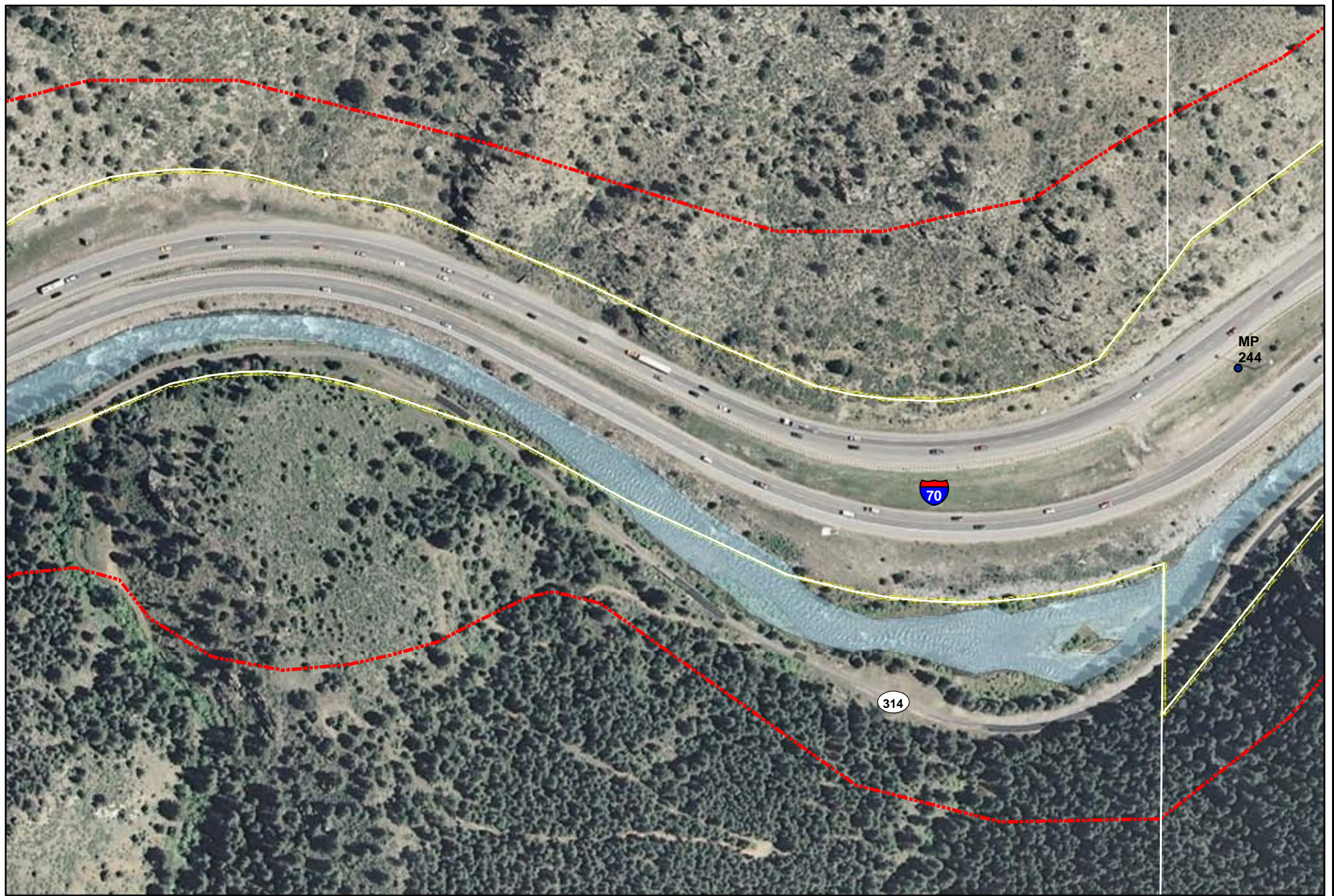
**Legend**

- |   |  |
|---|--|
|  US Forest Service |  Mileposts                  |
|  Clear Creek       |  Existing I-70 Right of Way |
|  Parcels           |  Area of Potential Effect   |






0 100 200 Feet







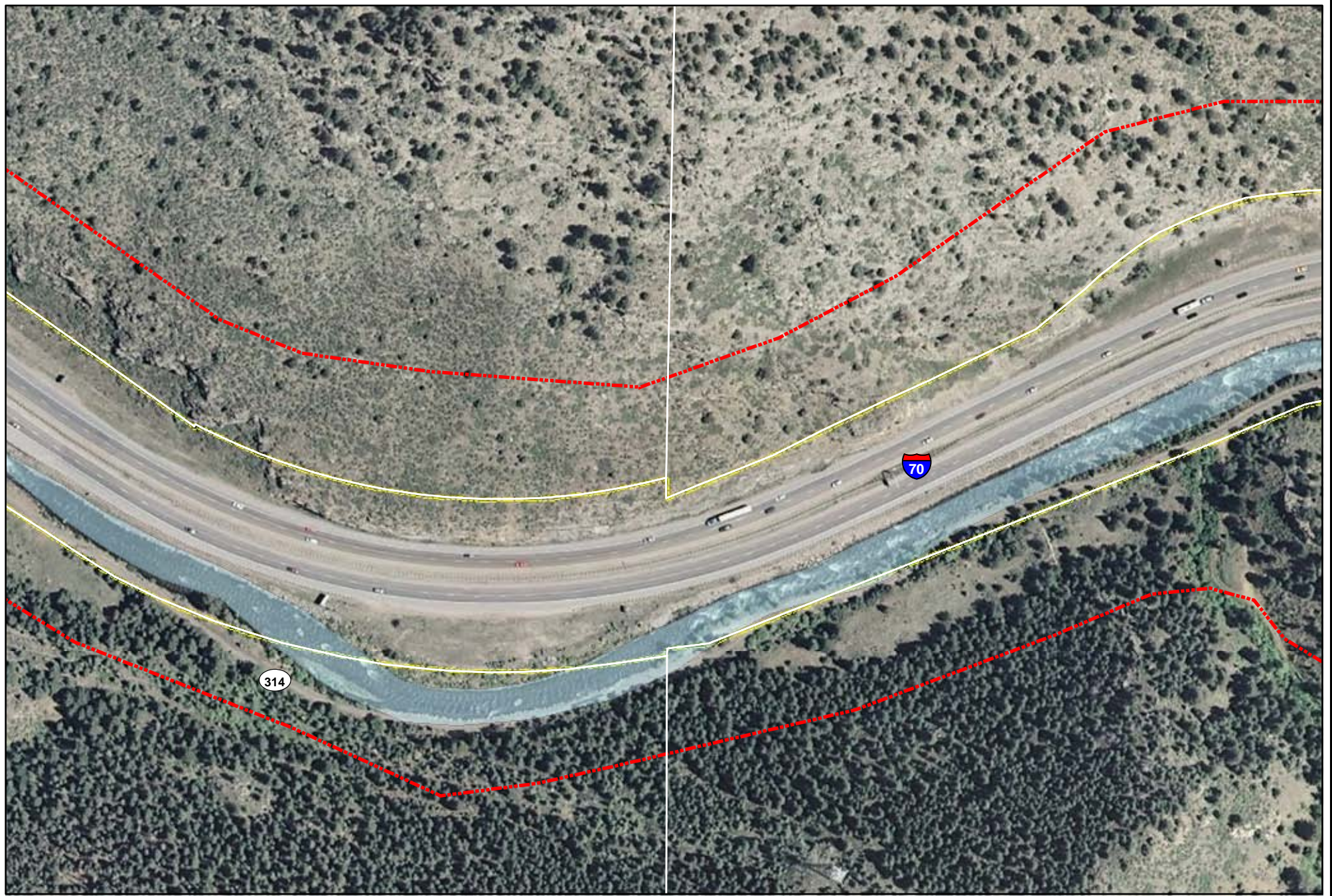
Legend

- |   |  |
|---|--|
|  US Forest Service |  Mileposts                  |
|  Clear Creek       |  Existing I-70 Right of Way |
|  Parcels           |  Area of Potential Effect   |







0 100 200 Feet







Legend

- |   |  |
|---|--|
|  US Forest Service |  Mileposts                  |
|  Clear Creek       |  Existing I-70 Right of Way |
|  Parcels           |  Area of Potential Effect   |







0 100 200 Feet

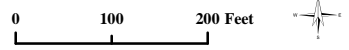




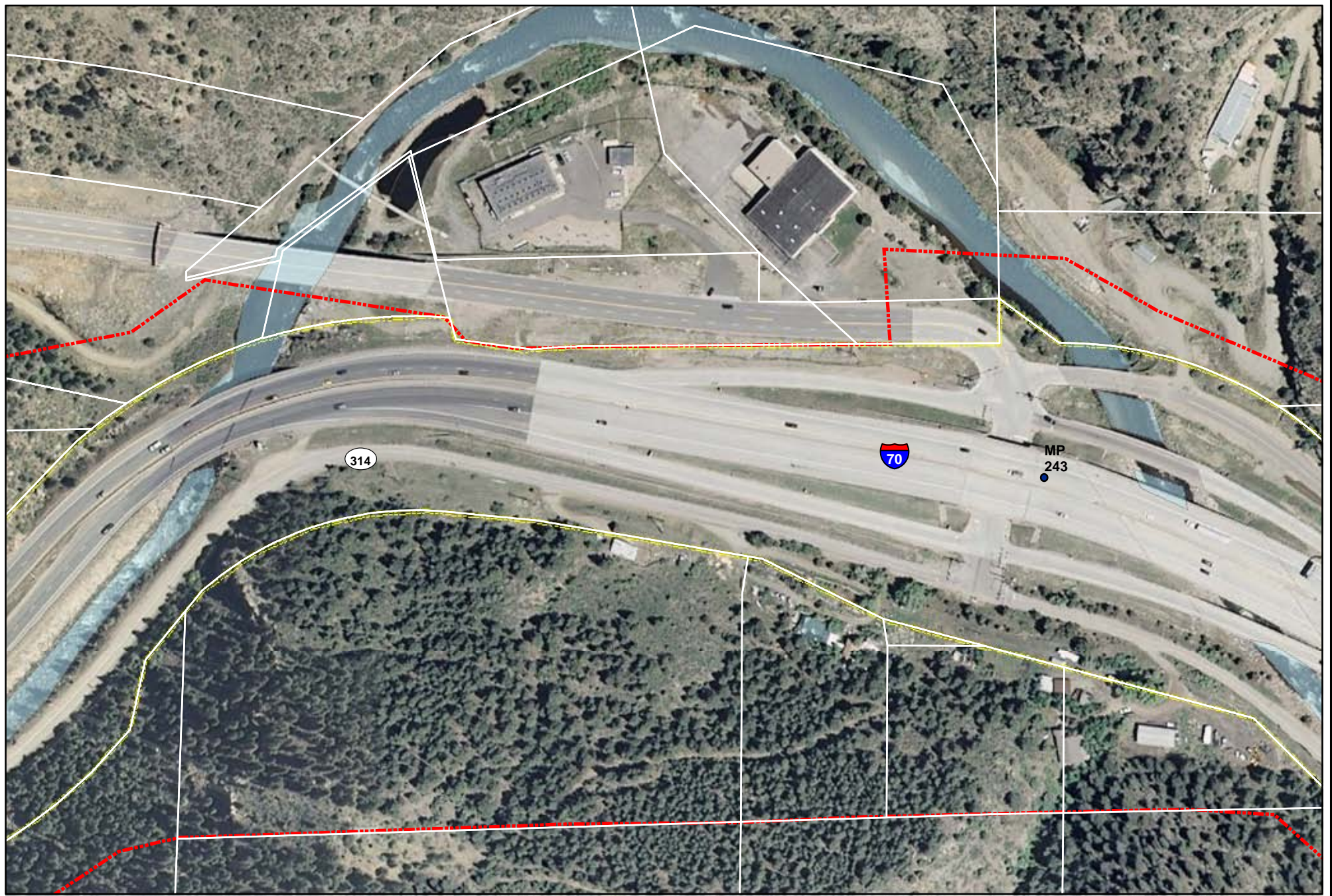


Legend






-  US Forest Service
-  Clear Creek
-  Parcels
-  Mileposts
-  Existing I-70 Right of Way
-  Area of Potential Effect







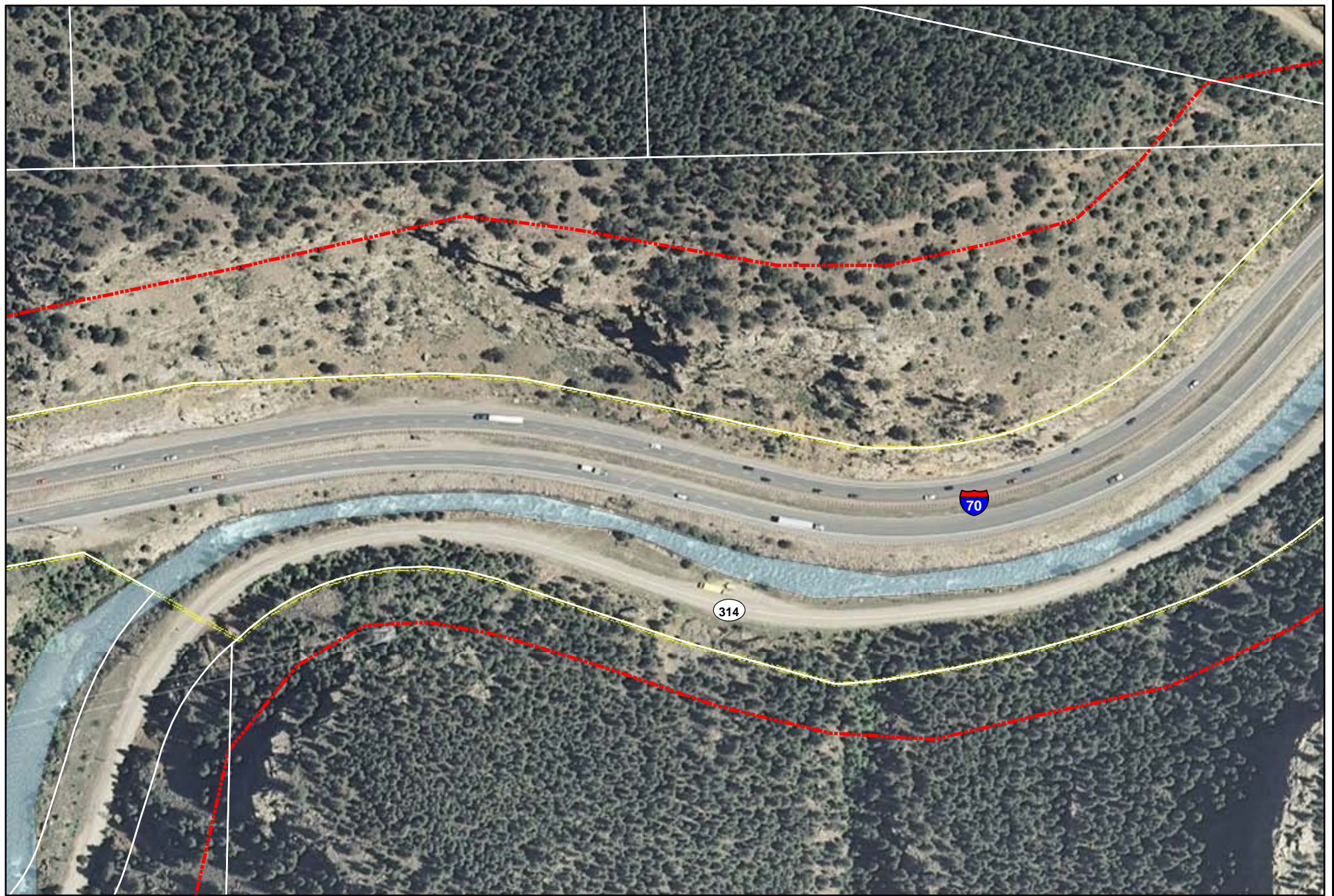
**Legend**

- |   |  |
|---|--|
|  US Forest Service |  Mileposts                  |
|  Clear Creek       |  Existing I-70 Right of Way |
|  Parcels           |  Area of Potential Effect   |







0 100 200 Feet







**Legend**

- |   |  |
|---|--|
|  US Forest Service |  Mileposts                  |
|  Clear Creek       |  Existing I-70 Right of Way |
|  Parcels           |  Area of Potential Effect   |

0 100 200 Feet







**Legend**

- |   |  |
|---|--|
|  US Forest Service |  Mileposts                  |
|  Clear Creek       |  Existing I-70 Right of Way |
|  Parcels           |  Area of Potential Effect   |







0 100 200 Feet

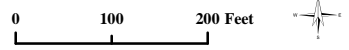




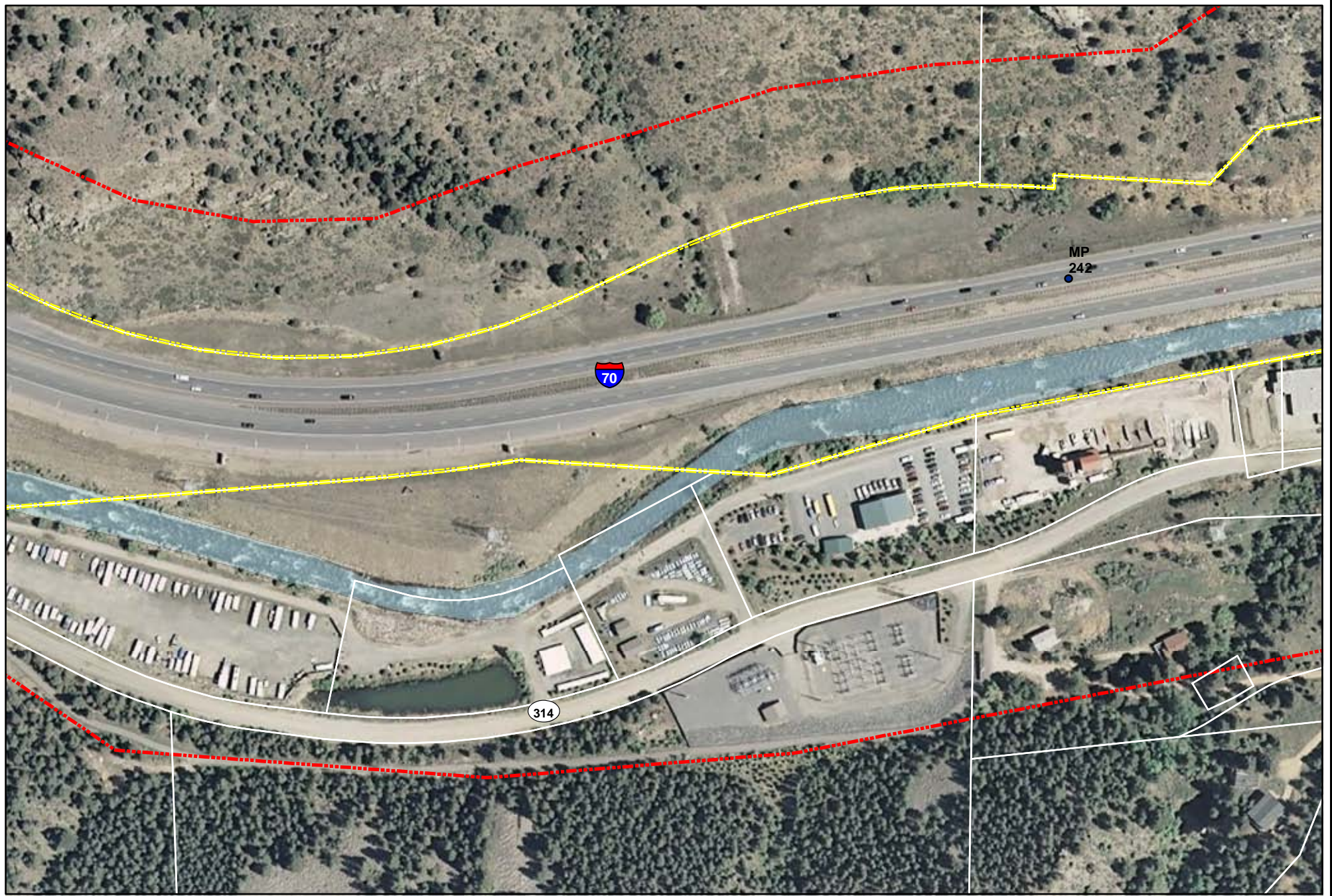


**Legend**







- |   |  |
|---|--|
|  US Forest Service |  Mileposts                  |
|  Clear Creek       |  Existing I-70 Right of Way |
|  Parcels           |  Area of Potential Effect   |







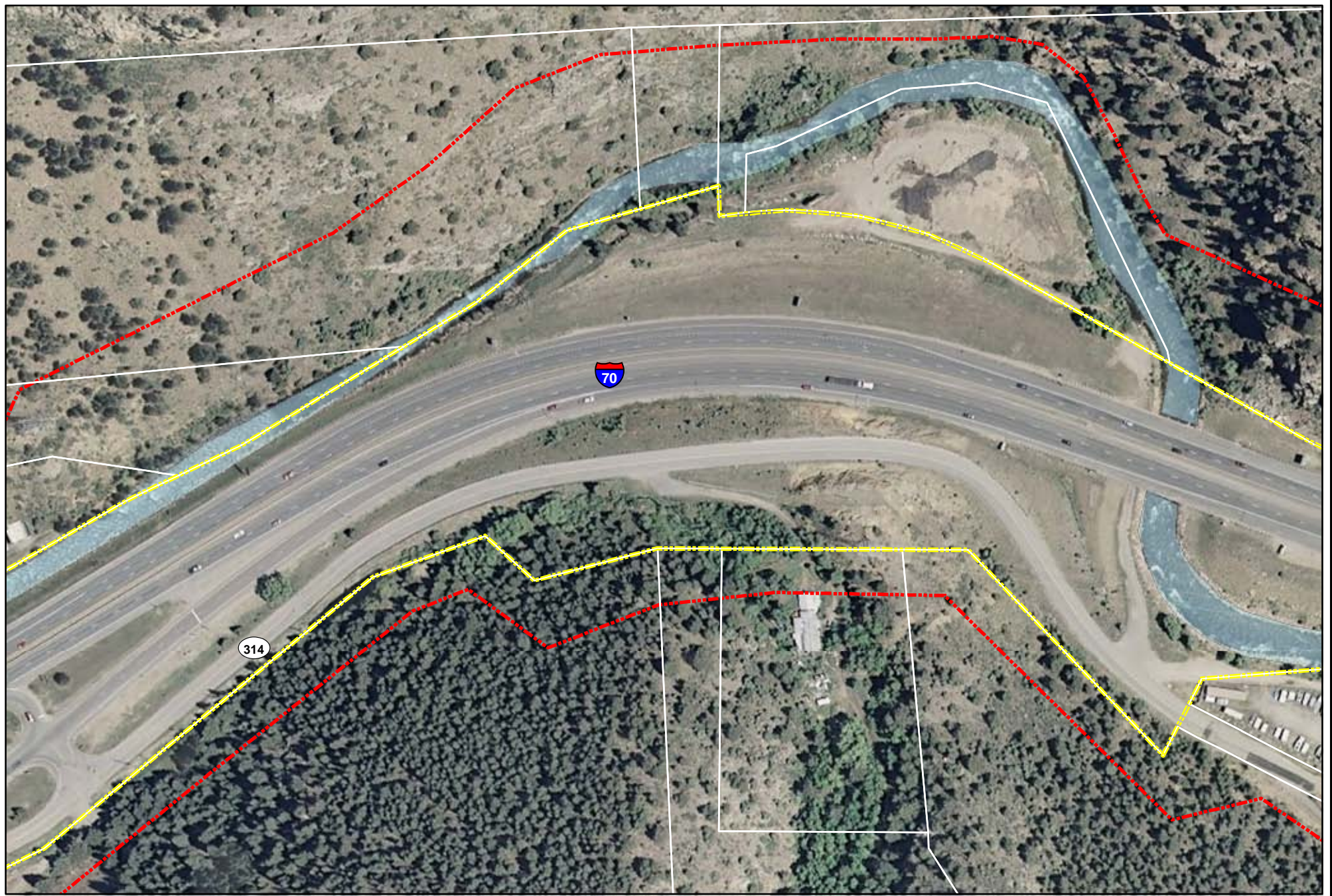
**Legend**

- |   |  |
|---|--|
|  US Forest Service |  Mileposts                  |
|  Clear Creek       |  Existing I-70 Right of Way |
|  Parcels           |  Area of Potential Effect   |







0 100 200 Feet







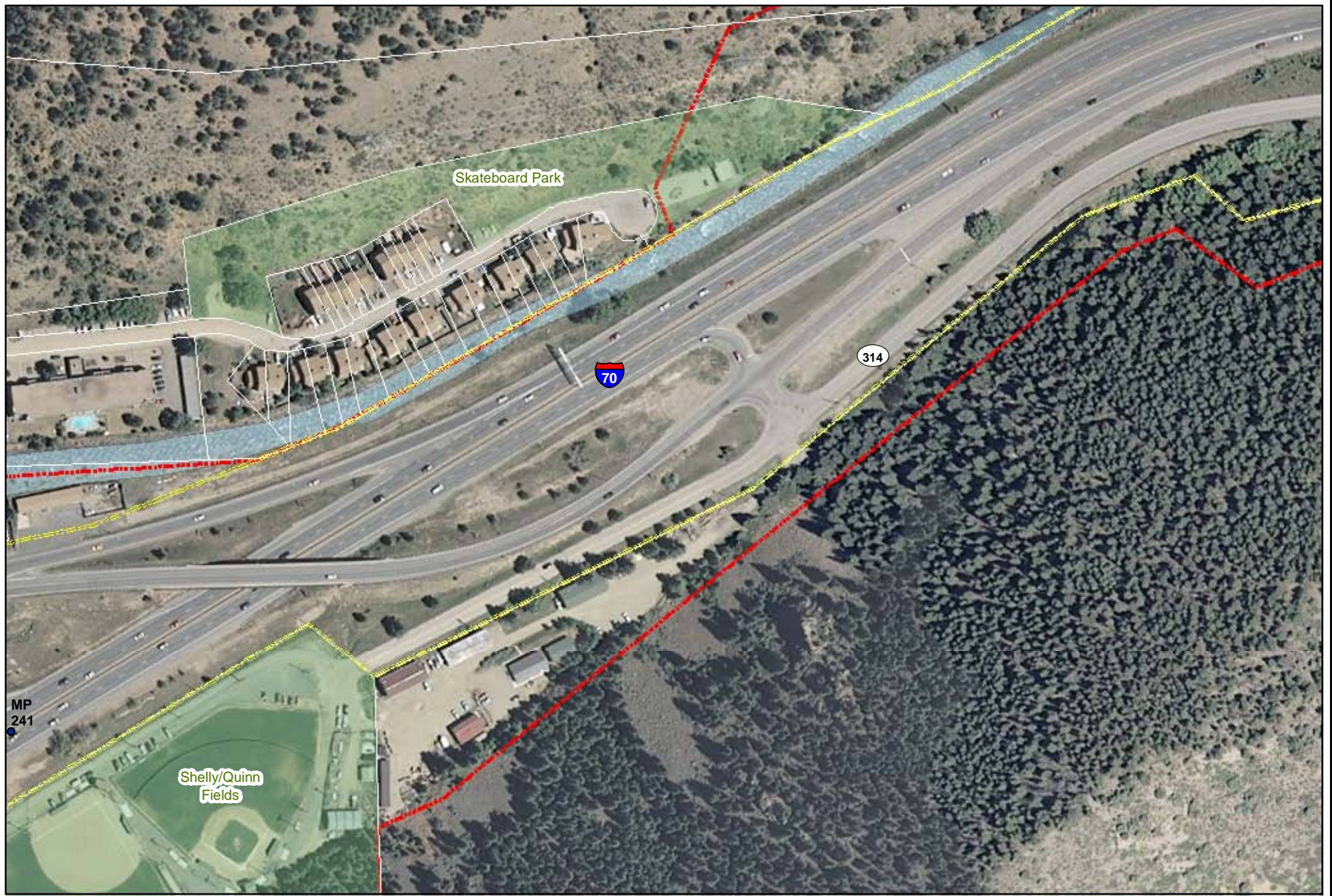
Legend

- |   |  |
|---|--|
|  US Forest Service |  Mileposts                  |
|  Clear Creek       |  Existing I-70 Right of Way |
|  Parcels           |  Area of Potential Effect   |

0 100 200 Feet







**Legend**

-  US Forest Service
-  Clear Creek
-  Parcels
-  Mileposts
-  Existing I-70 Right of Way
-  Area of Potential Effect






0 100 200 Feet







**Legend**

- |   |  |
|---|--|
|  US Forest Service |  Mileposts                  |
|  Clear Creek       |  Existing I-70 Right of Way |
|  Parcels           |  Area of Potential Effect   |

0 100 200 Feet

