

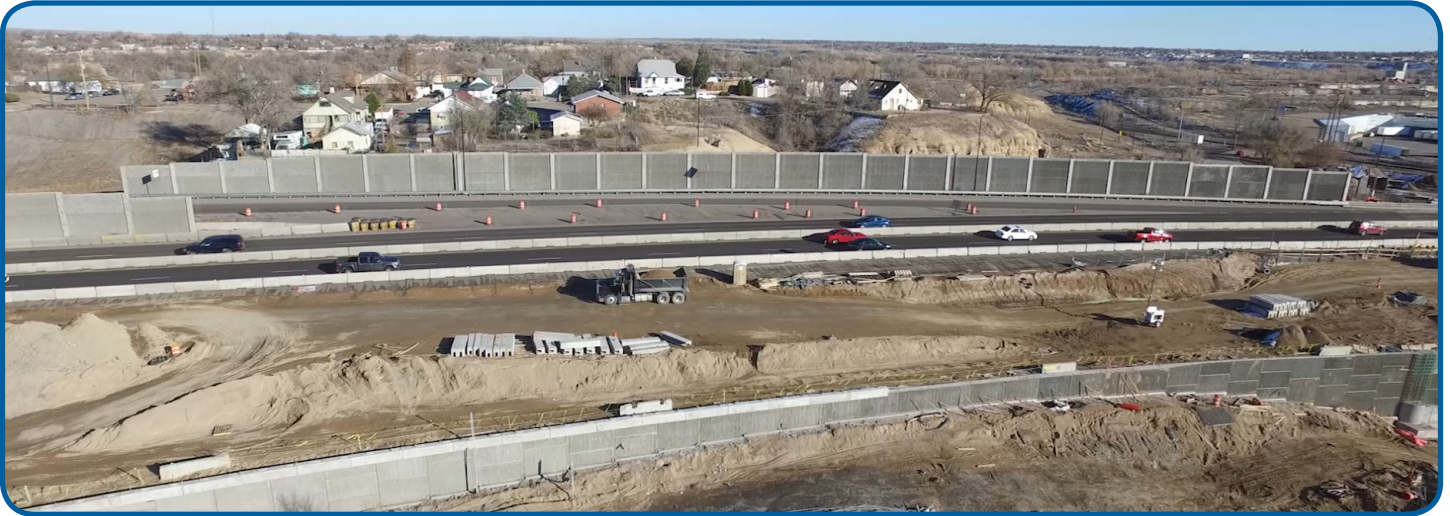


I-25: The New Pueblo Freeway

Ilex Street to City Center Drive

CONSTRUCTION UPDATE

I-25 ILEX STREET TO CITY CENTER DRIVE



Southbound City Center Drive on ramp

PROJECT OVERVIEW

The Colorado Department of Transportation (CDOT) began work on the I-25 Ilex Street to City Center Drive project in July 2015. The project consists of replacing bridges on I-25 between Ilex Street and City Center Drive in Pueblo. Work also includes rehabilitation of bridges on northbound I-25 over Santa Fe Avenue (US 50C), I-25 over Indiana Avenue, on Santa Fe Avenue over the Arkansas River, and on Northern Avenue and Mesa Avenue over I-25. Local roadway improvements are included at D Street, Ilex Street, Bennett Street, Clark Street, and along Santa Fe Avenue.

2018 IN REVIEW: PROJECT PROGRESS

It has been an extremely busy year on the I-25/Ilex Design-Build project! As it heads into the final stretch, here is a reminder of all the accomplishments, big and small, completed over the past year. Bridge rehabilitation has been completed at Indiana, Northern, Mesa, Green Truss Bridge, and I-25 over Santa Fe Avenue. Crews also completed drainage and safety features on I-25 from Santa Fe Avenue to City Center Drive, and finalized new highway interchanges, southbound at Santa Fe Avenue as well as northbound at D Street and City Center Drive. Crews wrapped up construction on I-25 over Gruma Drive, I-25 over Union Pacific and BNSF railroads, and I-25 over D Street. Mechanically Stabilized Earth (MSE) retaining walls have been installed along the length of the project.

UPCOMING WORK 2019

This project is scheduled for completion in Spring of 2019. Remaining work on the project includes:

- Final top asphalt layer to improve smoothness - expect continuing single-lane closures on I-25
- Landscaping/seeding
- Finishing and contouring of fill slopes
- Sediment and detention ponds
- Installation of signs and lighting
- Completion of Thomas Phelps Creek Trail
- Staining retaining walls and bridges
- Final striping
- Median barrier construction
- Guardrail and median at Truss Bridge over Arkansas

See the project website to view the project progress video.

RECENTLY COMPLETED WORK

- City Center Drive On Ramp - reopened to traffic
- Decorative columns
- Lanes shifted to final alignment
- Acceleration and deceleration lanes open

(continued on other side)

Phone: 719-470-2270

Email: i25ilex@PublicInfoTeam.com

Web: codot.gov/projects/ilexbridges



January 2019

I-25: ILEX STREET TO CITY CENTER DRIVE

CONSTRUCTION UPDATE

January 2019

Public Information Manager
c/o ZoZo Group, LLC
2590 N. Washington St., Suite #101
Denver, CO 80205



I-25: The New Pueblo Freeway

Ilex Street to City Center Drive



I-25: The New Pueblo Freeway

Ilex Street to City Center Drive

(continued from other side)

SCHEDULE AND TRAFFIC IMPACTS

Normal working hours are from 7 a.m. to 7 p.m. Monday through Friday. Some night time work is expected through February 2019. Speeds have been reduced to 25 mph on southbound Santa Fe Avenue from Locust Street to Santa Fe Drive. Speeds have been reduced to 45 mph within the project limits. Please use caution and stay alert while traveling through the construction zones.

CONTACT

For further information or if you have questions about the project, please contact the Public Information Team.

Phone: 719-470-2270

Email: i25ilex@PublicInfoTeam.com

Web: codot.gov/projects/ilexbridges

CONSTRUCTION UPDATE

