



I-25: The New Pueblo Freeway

Ilex Street to City Center Drive

I-25 ILEX STREET TO CITY CENTER DRIVE



Iron Phoenix Pier 2 Pile Cap Footing Pour

PROJECT OVERVIEW

The Colorado Department of Transportation (CDOT) began work on the I-25 Ilex Street to City Center Drive project in July 2015. The project consists of replacing bridges on I-25 between Ilex Street and City Center Drive in Pueblo. Work also includes rehabilitation of bridges on northbound I-25 over Santa Fe Avenue (US 50C), I-25 over Indiana Avenue, on Santa Fe Avenue over the Arkansas River, and on Northern Avenue and Mesa Avenue over I-25. Local roadway improvements are included at D Street, Bennett Street, Clark Street, and along Santa Fe Avenue.

PROJECT PROGRESS

- Crews continued the installation of Mechanically Stabilized Earth (MSE) panel walls at Gruma Drive and the future Alan Hamel/Union Pacific Railroad (UPRR) bridge.
- Construction of the new D Street extension was completed, located on the west side of Santa Fe Avenue. In mid-May, Ilex Street was permanently closed and the northbound on- and off-ramps for Exit 98A were rerouted to connect with the new D Street extension.
- Storm drainage improvements were completed at Kelly Avenue.

- Deck replacement on the northbound I-25 bridge over Indiana Avenue was completed.
- The median on I-25 over City Center Drive bridge was repaved.
- Crews began working on the new bridge structure on I-25 over Thomas Phelps Creek and UPRR.
- Crews continued deck removal, replacement and rehabilitation on the Northern Avenue bridge.
- Steel repairs and rehabilitation work continued on the historic US 50C truss bridge; originally built in 1924 over the Arkansas River.
- Crews completed pier and pier cap placement for the future Alan Hamel/UPRR bridge.
- Girders (beams) were set on the new box girder bridge on I-25 over Gruma Drive.

SCHEDULE AND TRAFFIC IMPACTS

Normal working hours are 7 a.m. to 7 p.m., Monday through Friday, with nighttime and weekend work as needed.

The speed limit will be reduced in the construction zone for the safety of the public, as well as construction crews working along the highway. Please use caution and stay alert while traveling through the construction zone.

(continued on other side)

Phone: 719-470-2270

Email: i25ilex@PublicInfoTeam.com

Web: codot.gov/projects/ilexbidges



I-25: ILEX STREET TO CITY CENTER DRIVE CONSTRUCTION UPDATE

June 2017

Public Information Manager
c/o ZoZo Group, LLC
4701 Marion Street, Suite #324
Denver, CO 80216



**I-25: The New
Pueblo Freeway**
Ilex Street to City Center Drive



CONSTRUCTION UPDATE



Paving northbound bridge at Indiana Avenue

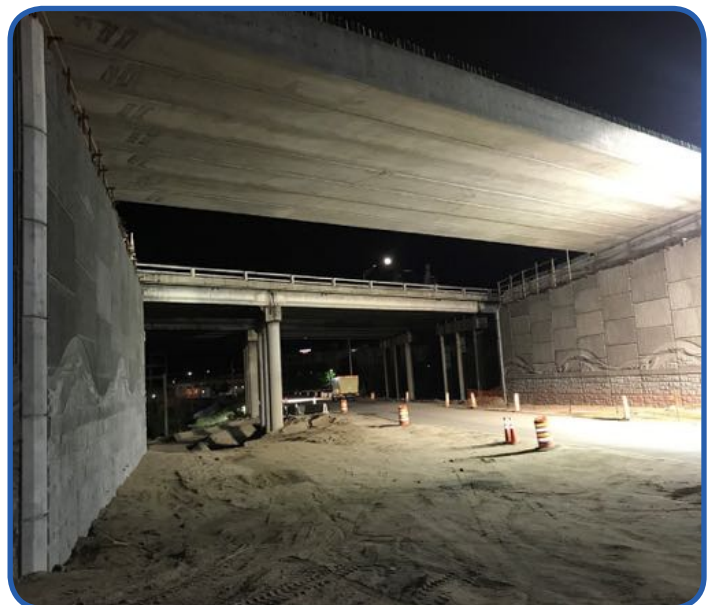
CONTACT

For further information or if you have questions about the project, please contact the Public Information Team.

Phone: 719-470-2270

Email: i25ilex@PublicInfoTeam.com

Web: codot.gov/projects/ilexbridges



Cranes setting girders on Gruma Street bridge