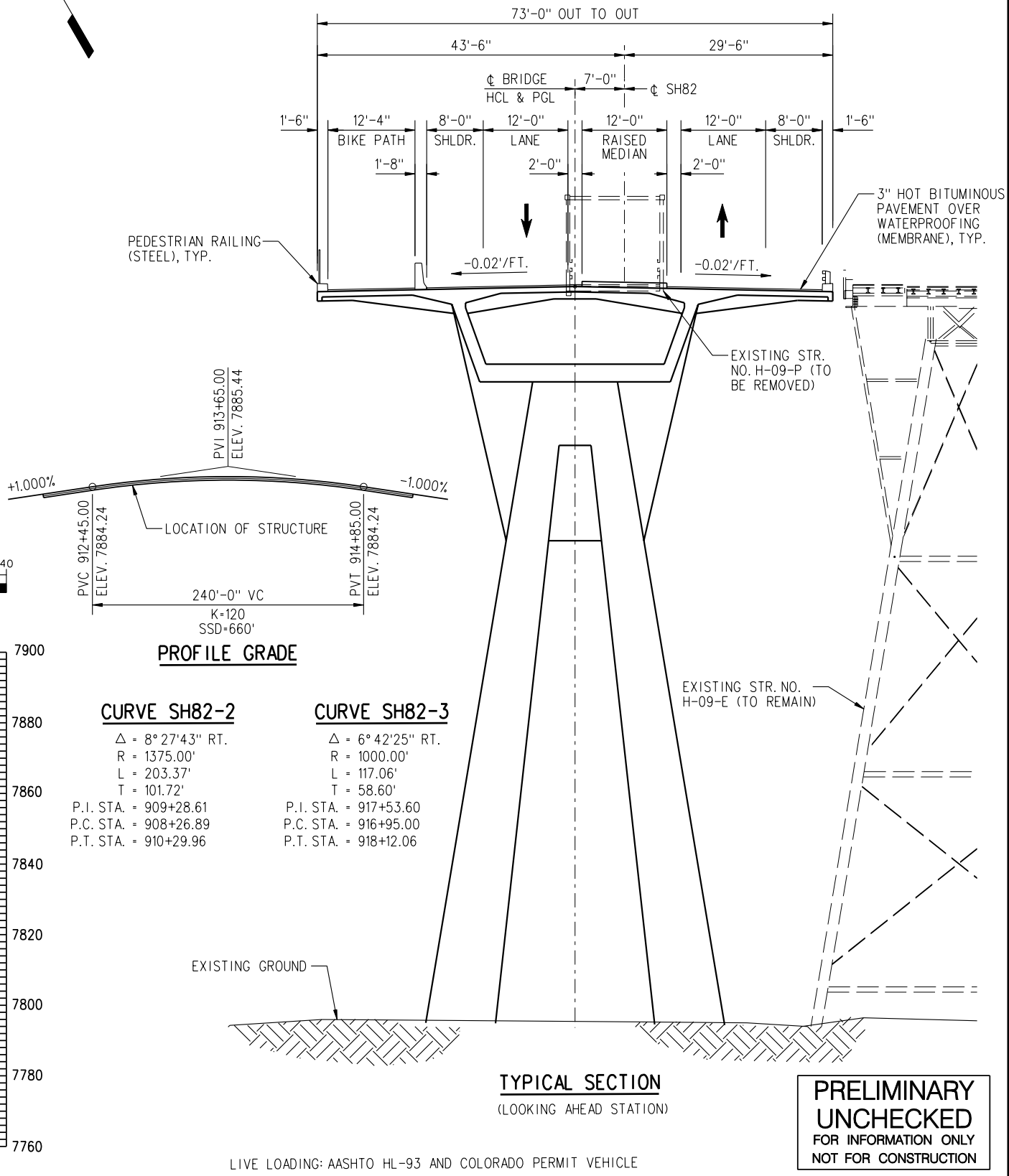
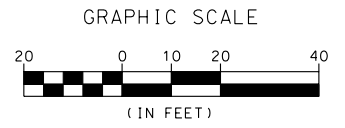
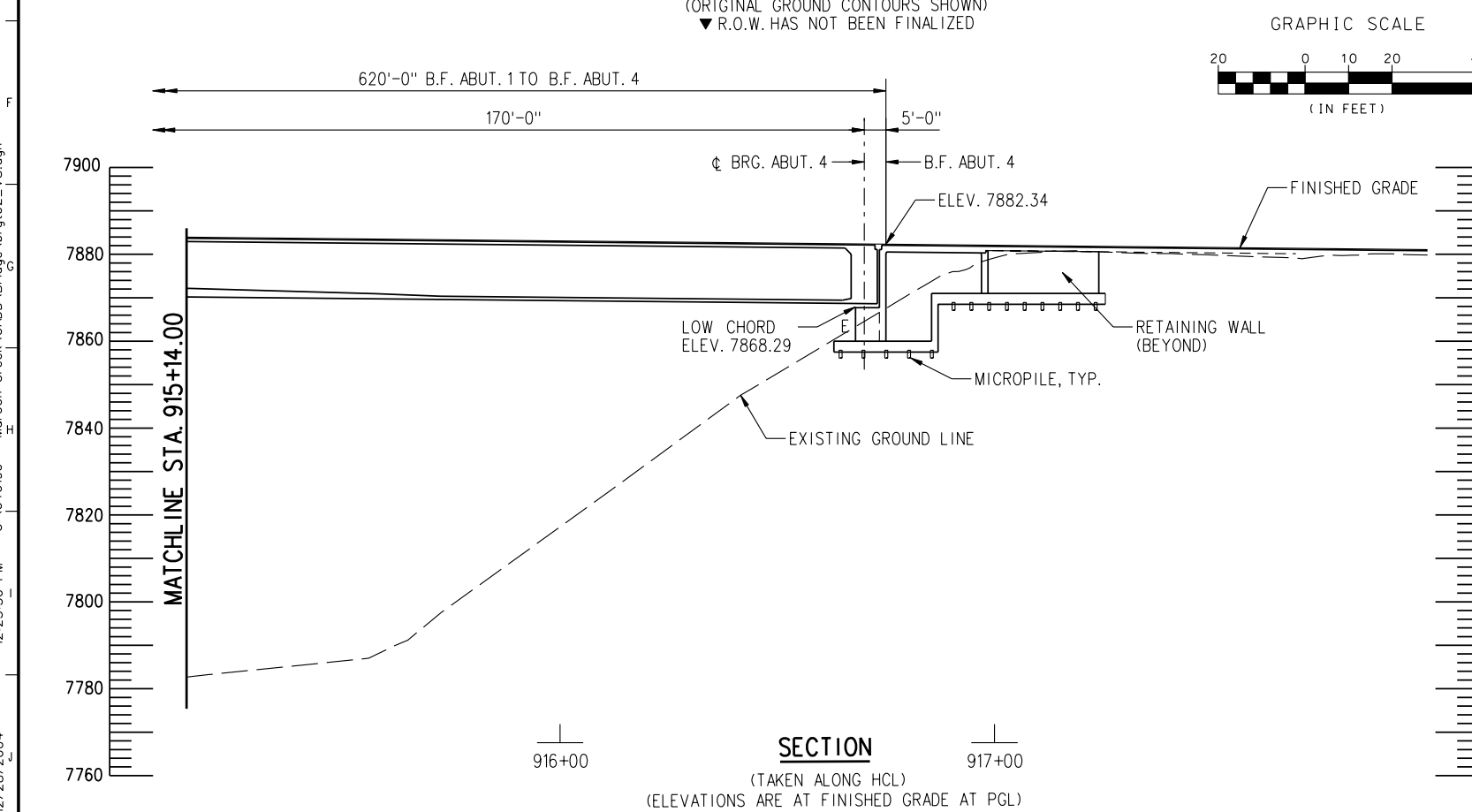
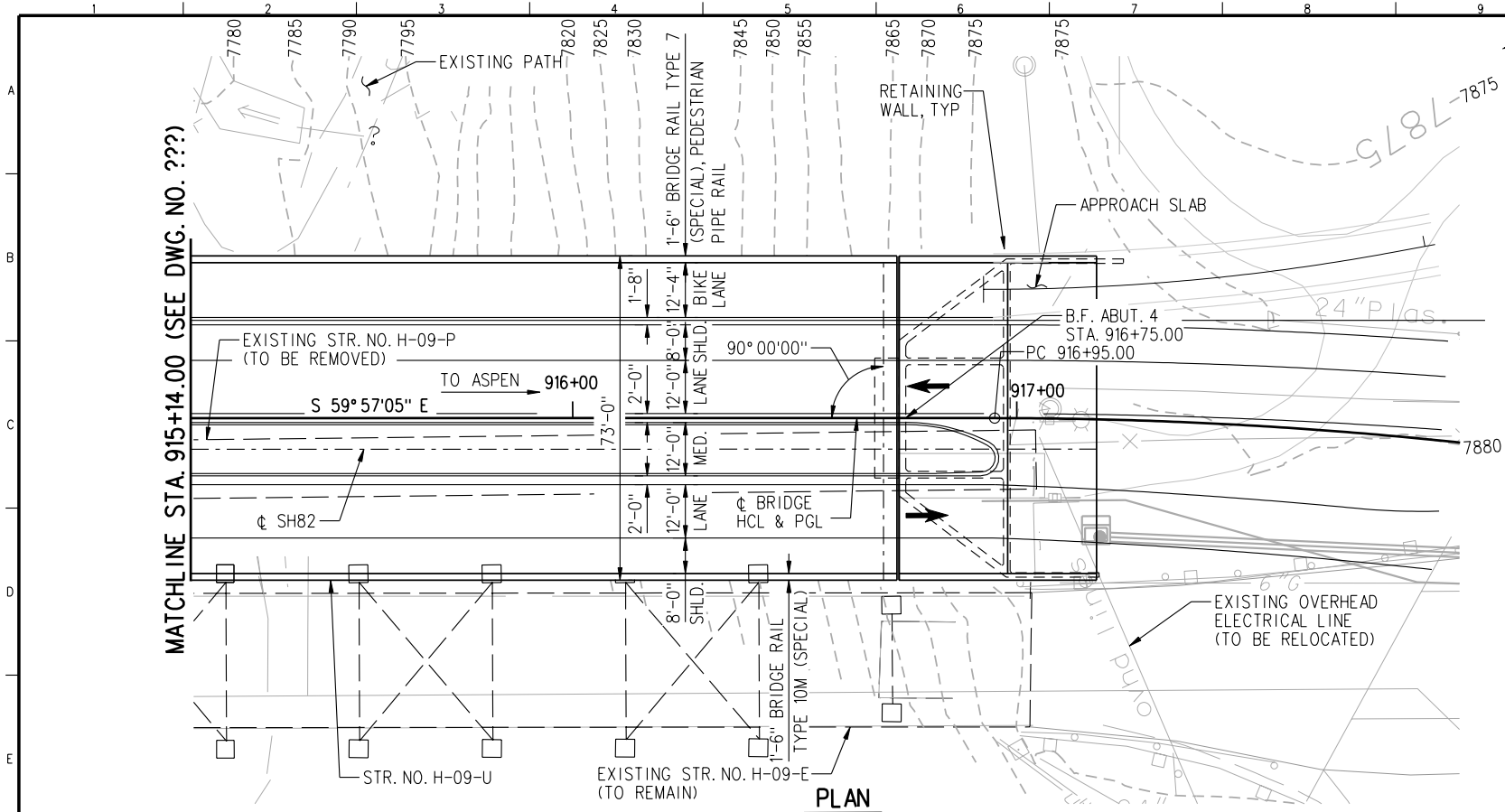


Revision Dates	

Quantities	
Design	

12/28/2004



CURVE SH82-2
 $\Delta = 8^\circ 27'43''$ RT.
 $R = 1375.00'$
 $L = 203.37'$
 $T = 101.72'$
 P.I. STA. = 909+28.61
 P.C. STA. = 908+26.89
 P.T. STA. = 910+29.96

CURVE SH82-3
 $\Delta = 6^\circ 42'25''$ RT.
 $R = 1000.00'$
 $L = 117.06'$
 $T = 58.60'$
 P.I. STA. = 917+53.60
 P.C. STA. = 916+95.00
 P.T. STA. = 918+12.06

PRELIMINARY UNCHECKED
 FOR INFORMATION ONLY
 NOT FOR CONSTRUCTION

Computer File Information		Sheet Revisions		Colorado Department of Transportation		As Constructed		MAROON CREEK BRIDGE GENERAL LAYOUT (2 OF 2)		Project No./Code					
Creation Date:	Initials:			202 Centennial Drive Glenwood Springs, CO 81601 Phone: (970) 945-8187 Fax: (970) 945-3860		1700 Broadway Suite 600 Denver, CO 80290 Phone: (303) 863-7900 Fax: (303) 863-7110		No Revisions: Revised: Void:		Designer: T. STELMACK Detailer: K. KRUEGER Sheet Subset: BRIDGE		HB 0821-075			
Last Modification Date:	Initials:											Structure Numbers		H-09-U	
Full Path:												Sheet Subset: B-5 of		15155	
Drawing File Name:	.dgn											Sheet Number:			
Scale:	Units: English														