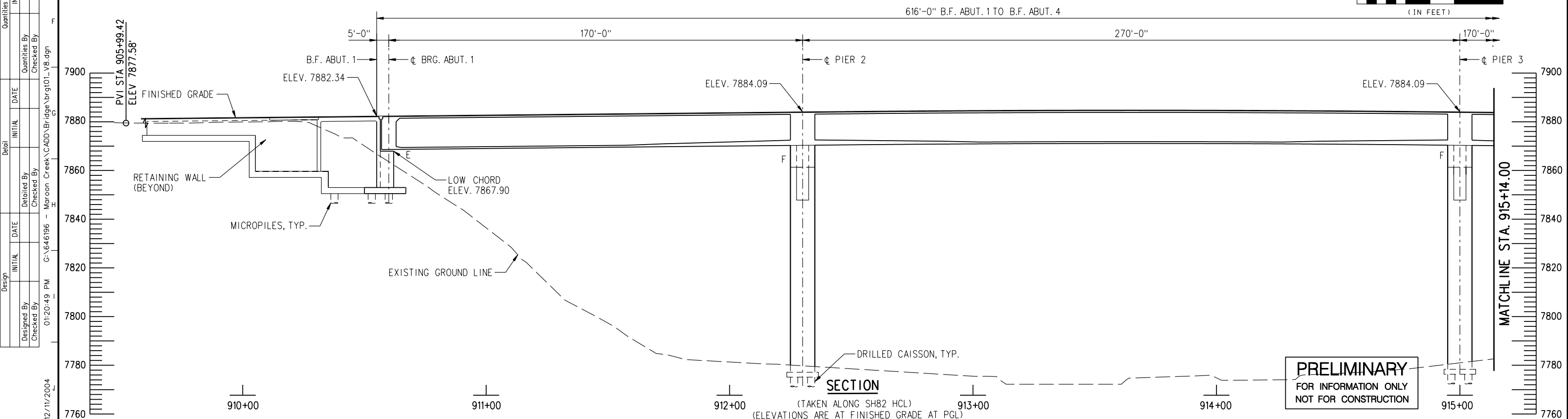
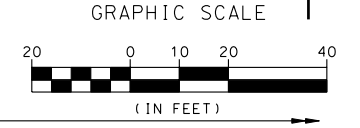


PLAN
(EXISTING GROUND CONTOURS SHOWN)



SECTION
(TAKEN ALONG SH82 HCL)
(ELEVATIONS ARE AT FINISHED GRADE AT PGL)

PRELIMINARY
FOR INFORMATION ONLY
NOT FOR CONSTRUCTION

Revision Dates	

Design		Detail		Quantities	
Designed By	Checked By	INITIAL	DATE	INITIAL	DATE

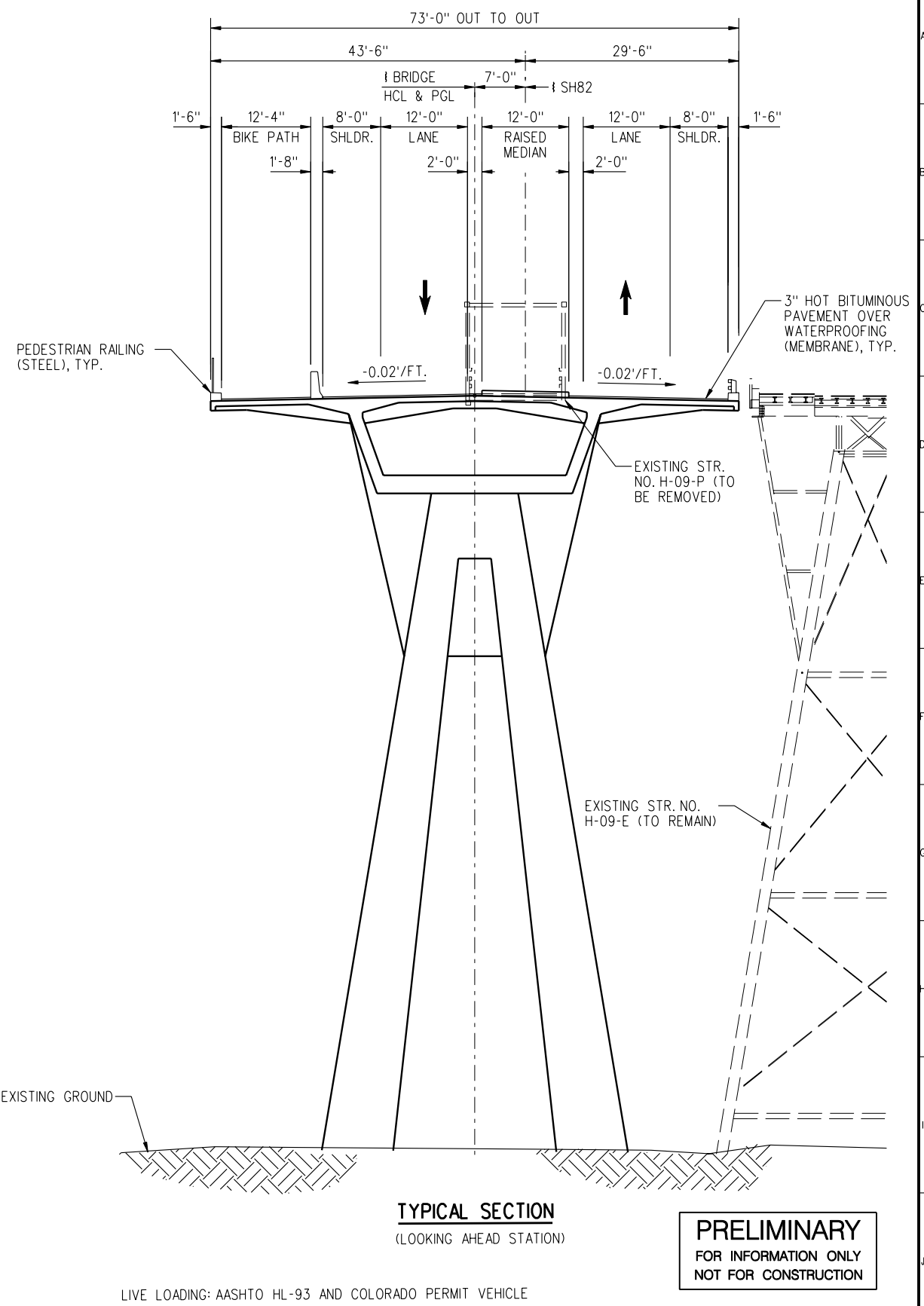
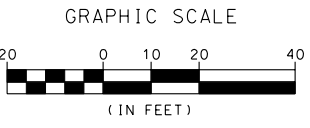
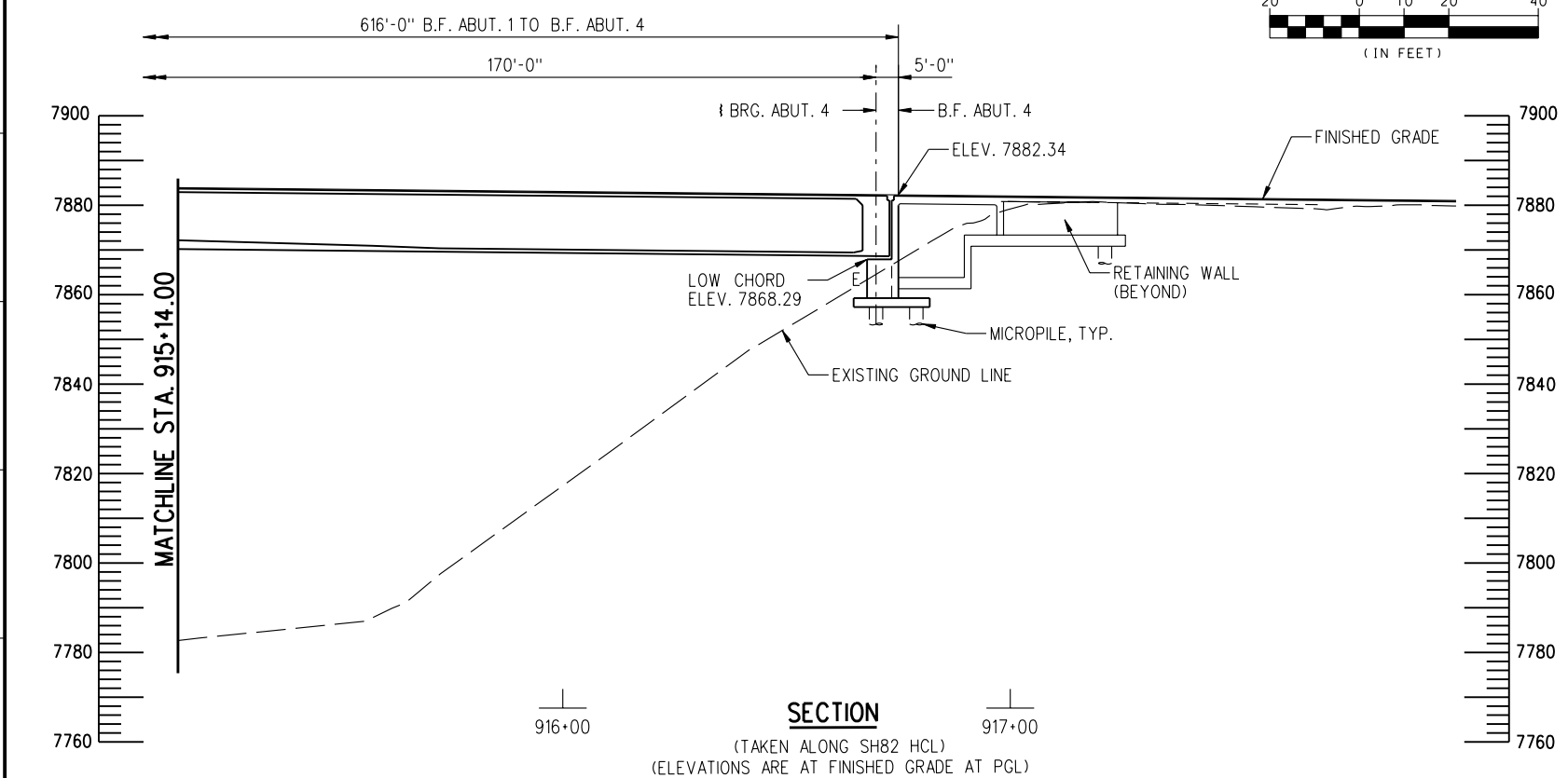
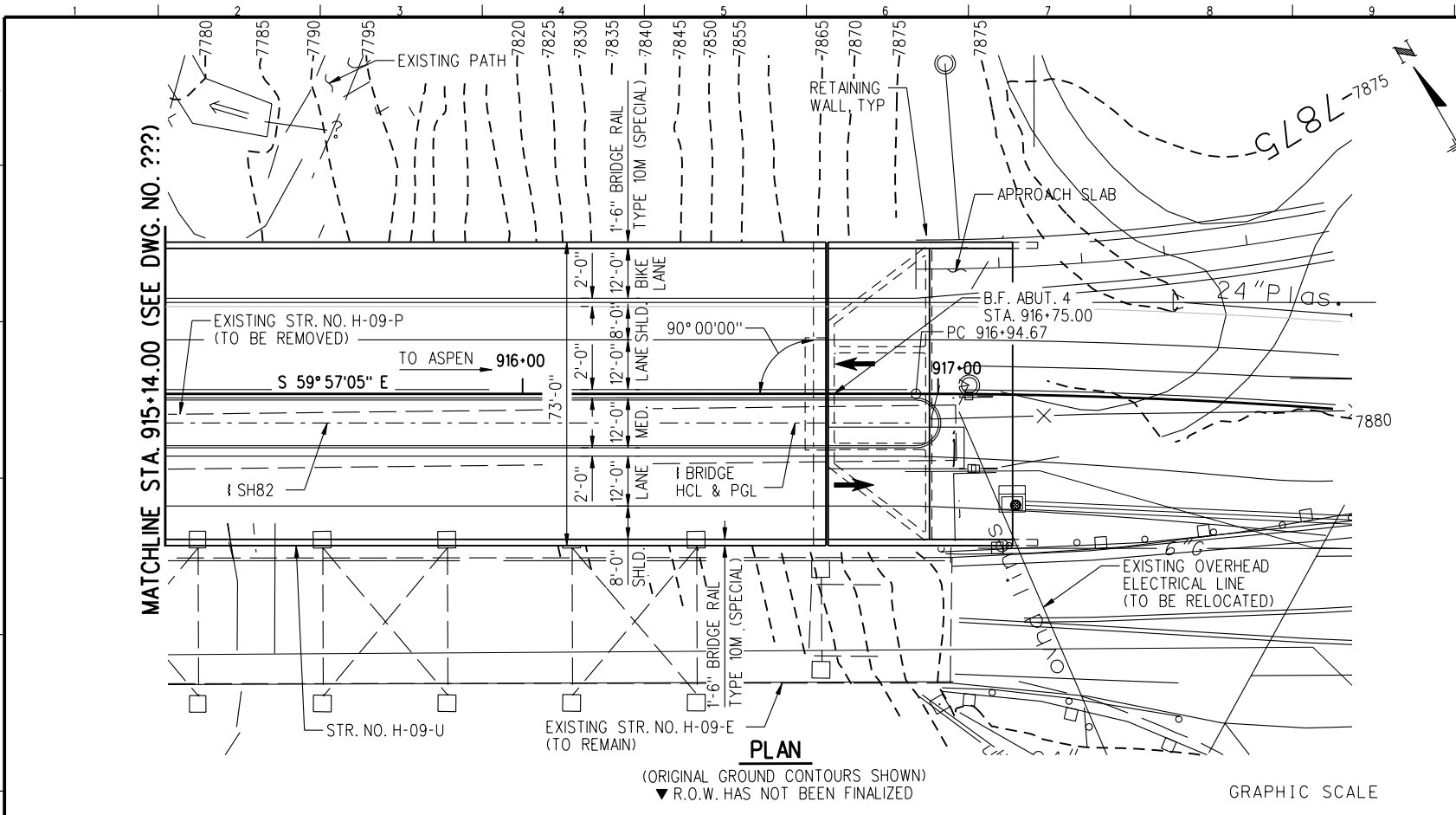
12/11/2004

Computer File Information		Sheet Revisions		Colorado Department of Transportation		As Constructed		MAROON CREEK BRIDGE GENERAL PLAN & ELEVATION (1 OF 2)		Project No./Code	
Creation Date:	Initials:			202 Centennial Drive Glenwood Springs, CO 81601 Phone: (970) 945-8187 Fax: (970) 945-3860	1700 Broadway Suite 600 Denver, CO 80290 Phone: (303) 863-7900 Fax: (303) 863-7110	No Revisions:		Designer: T. STELMACK		Structure: H-09-U	
Last Modification Date:	Initials:					Revised:		Detailer: K. KRUEGER		Sheet Number: of	
Full Path:						Void:		Sheet Subset: BRIDGE		Sheet Number: of	
Drawing File Name:											
Scale:	Units: English			REGION 3						Sheet Number: of	

Revision Dates	
NO.	DATE

Design		Detail		Quantities	
DESIGNED BY	DATE	DETAILED BY	DATE	QUANTITIES BY	DATE

12/11/2004



PRELIMINARY
FOR INFORMATION ONLY
NOT FOR CONSTRUCTION

Computer File Information		Sheet Revisions		Colorado Department of Transportation		As Constructed		MAROON CREEK BRIDGE GENERAL PLAN & ELEVATION (2 OF 2)		Project No./Code									
Creation Date:	Initials:			202 Centennial Drive Glenwood Springs, CO 81601 Phone: (970) 945-8187 Fax: (970) 945-3860		1700 Broadway Suite 600 Denver, CO 80290 Phone: (303) 863-7900 Fax: (303) 863-7110		No Revisions:		Designer: T. STELMACK Detailer: K. KRUEGER		H-09-U Structure Numbers							
Last Modification Date:	Initials:													Revised:		Sheet Subset: BRIDGE		of	
Full Path:																			
Drawing File Name:	.dgn			Scale:		Units: English													