

AS CONSTRUCTED			PROJECT NUMBER	SHEET NUMBER
NO REVISIONS	REVISED	VOID		
REVISIONS				

GENERAL NOTES

ALL WORK SHALL BE DONE ACCORDING TO THE STANDARD SPECIFICATIONS, SPECIAL PROVISIONS AND STANDARD PLANS OF THE COLORADO DEPARTMENT OF TRANSPORTATION APPLICABLE TO THE PROJECT

STRUCTURE EXCAVATION AND BACKFILL SHALL BE IN ACCORDANCE WITH M-206-2 FOR ABUTMENTS AND PIERS.

EXPANSION JOINT MATERIAL SHALL MEET AASHTO SPECIFICATION M-213.

ALL CONCRETE FOR DECK SHALL BE CLASS D (BRIDGE). ALL CONCRETE FOR ABUTMENTS AND PIER FOUNDATION SHALL BE CLASS A (BRIDGE).

ALL REINFORCING STEEL SHALL BE GRADE 60. EPOXY COATING IS NOT REQUIRED.

VISIBLE ABUTMENT AND PIER FOUNDATION CONCRETE SHALL BE GIVEN A CLASS 5, MASONRY COATING FINISH. THE DECK SHALL BE GIVEN A FLOAT FINISH.

THE FOLLOWING TABLE GIVES THE MINIMUM LAP SPLICE LENGTH FOR REINFORCING BARS:

BAR SIZE #4 #5 #6 #7 #8 #9 #10 #11

SPLICE LENGTH FOR 1'-3" 1'-6" 2'-0" 2'-8" 3'-8" 4'-5" 5'-7" 6'-10" CLASS A CONCRETE

SPLICE LENGTH FOR 1'-3" 1'-6" 1'-10" 2'-2" 2'-10" 3'-7" 4'-7" 5'-7" CLASS D CONCRETE

ALL STRUCTURAL STEEL SHALL BE ASTM A572 GRADE 50 AND A501.

ALL STRUCTURAL STEEL SHALL BE PAINTED IN ACCORDANCE WITH SECTION 509 OF THE STANDARD SPECIFICATIONS. THE COLOR SHALL BE SELECTED BY THE ENGINEER.

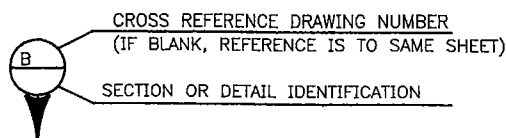
ALL BOLTS SHALL BE 7/8" DIAMETER, HIGH STRENGTH, UNLESS OTHERWISE NOTED.

THE CONTRACTOR SHALL BE RESPONSIBLE FOR THE STABILITY OF THE STRUCTURE DURING CONSTRUCTION.

THE CONTRACTOR MUST VERIFY ALL DIMENSIONS IN THE FIELD PRIOR TO CONSTRUCTION AND FABRICATION.

THE CONTRACTOR IS RESPONSIBLE FOR MAKING HIS OWN DETERMINATION AS TO THE TYPE AND LOCATION OF UNDERGROUND UTILITIES AS MAY BE NECESSARY TO AVOID DAMAGE THERETO.

E.F.= EACH FACE T.F.= TOP FACE
F.F.= FAR FACE B.F.= BOT. FACE
N.F.= NEAR FACE



DESIGN DATA

AASHTO, 15TH EDITION.

DESIGN METHOD: SERVICE LOAD DESIGN.

LIVE LOAD: 85 PSF FOR PED/BIKE BRIDGE OR COLORADO TYPE 3 TRUCK.

REINFORCED CONCRETE:

CLASS A CONCRETE: f'c = 3,000 psi fc = 1,200 psi
CLASS D CONCRETE: f'c = 4,500 psi fc = 1,800 psi
REINFORCING STEEL: fy = 60,000 psi fs = 24,000 psi

STRUCTURAL STEEL:

ASTM A572 GRADE 50 (AASHTO M270 GRADE 50) AND ASTM A501 fy = 50,000 psi, fs = 27,000 psi
BOLTS: ASTM A490 (AASHTO M253) SLIP CRITICAL CLASS A
CORRUGATED STEEL PANELS: A3 AMERICAN IRON AND STEEL INSTITUTE fy = 33,000 psi

SUMMARY OF QUANTITIES								
ITEM NO.	DESCRIPTION	UNIT	SUPER-STRUCTURE	ABUT. 1	PIER 2	PIER 3	ABUT. 4	TOTAL
206	STRUCTURE EXCAVATION	CY		32	187	187	32	438
206	STRUCTURE BACKFILL (CLASS 2)	CY		22	90	90	22	224
① 509	STRUCTURAL STEEL	LB	245300		27800	27800		300900
509	CORRUGATED STEEL PANEL	SF	9308					9308
512	ELASTOMERIC BEARING PAD	FACH	4					4
601	CONCRETE CLASS A (BRIDGE)	CY		12	100	99	12	223
601	CONCRETE CLASS D (BRIDGE)	CY	90					90
② 602	REINFORCING STEEL	LB	630	480	6370	6050	480	14010
613	1 1/2 INCH ELECTRICAL CONDUIT	LF	700					700
613	4 INCH ELECTRICAL CONDUIT	LF	1400					1400
620	SANITARY FACILITY	FACH						1
626	MOBILIZATION	LS						1

- ① THIS QUANTITY INCLUDES ALL PLATES, PINS, BOLTS AND ANCHOR BOLTS FOR THE BEARINGS, AS WELL AS EXPANSION PLATES AND PIPES FOR THE RAILING.
- ② INCLUDING WELDED WIRE FABRIC.

INDEX OF DRAWINGS

DRAWING NO.

- B-1 GENERAL INFORM. & SUMMARY OF QUANTITIES.
- B-2 GENERAL LAYOUT.
- B-3 ENGINEERING GEOLOGY, AND FOUNDATION DETAILS.
- B-4 INTERIOR TRUSS PLANS & ELEVATION.
- B-5 PIER TRUSS PLANS & ELEVATION.
- B-6 TRUSS DETAILS.
- B-7 END TRUSS PLANS, ELEVATION & DETAILS.
- B-8 PIER TOWER ELEVATIONS & DETAILS.

BRIDGE DESCRIPTION

13.67' WIDE AND 672' LONG PED/BIKE BRIDGE
210'+252'+210' CANTILEVER SUSPENSION SPANS
WITH 14' HIGH PRATT STEEL TRUSSES AND CONCRETE
SLAB ON CORRUGATED STEEL PANELS. TWO 100' HIGH
BRACED STEEL TOWERS.

MEHEEN ENGINEERING CORPORATION

PITKIN COUNTY	
MAROON CREEK PED/BIKE BRIDGE GENERAL INFORMATION SUMMARY OF QUANTITIES	
Designer H. JOE MEHEEN	Structure
Detailer E. KHANI	Numbers
Drawing Number B - 1 of Drawings	

Revision Dates	(Preliminary Stage Only)

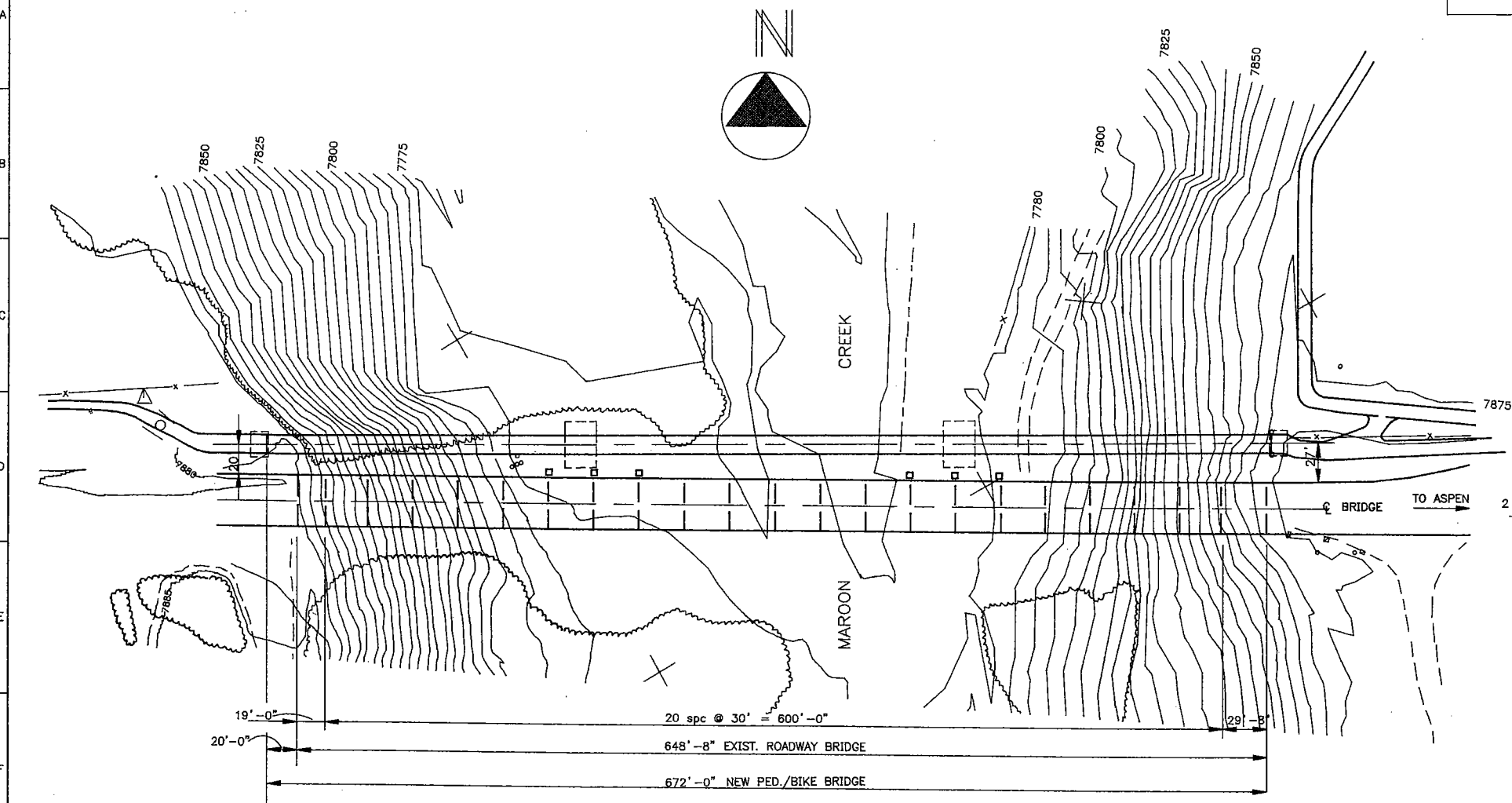
Quantities	INITIAL	DATE
Checked By		
Detail	INITIAL	DATE
Checked By		
Design	INITIAL	DATE
Checked By		

MC-FGJNF 05/23/1995

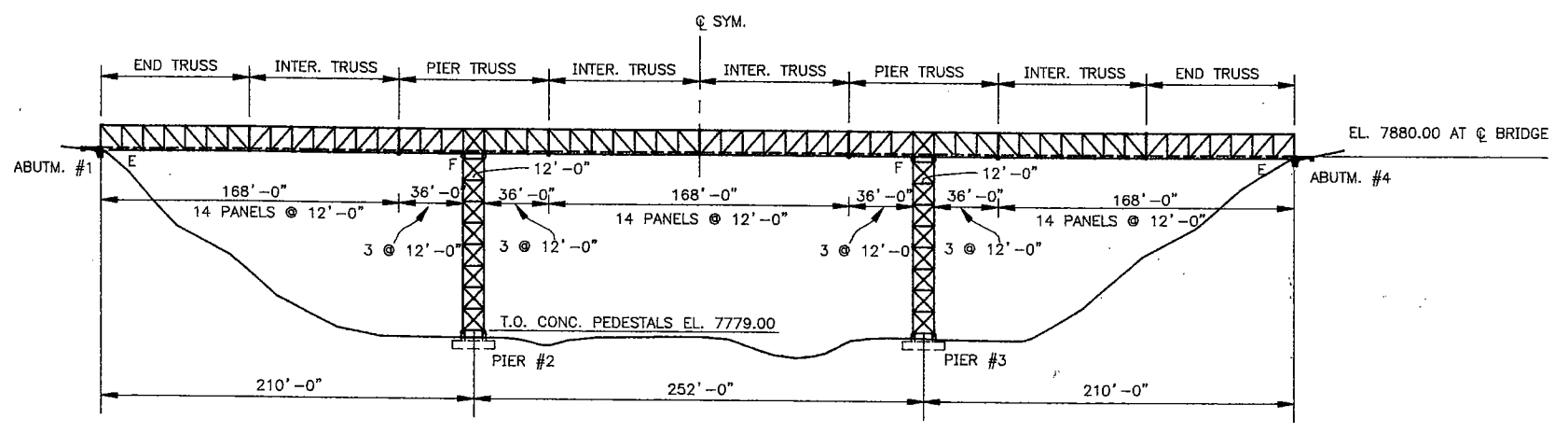
AS CONSTRUCTED			PROJECT NUMBER	SHEET NUMBER
NO REVISIONS	REVISED	VOID		

REVISIONS	

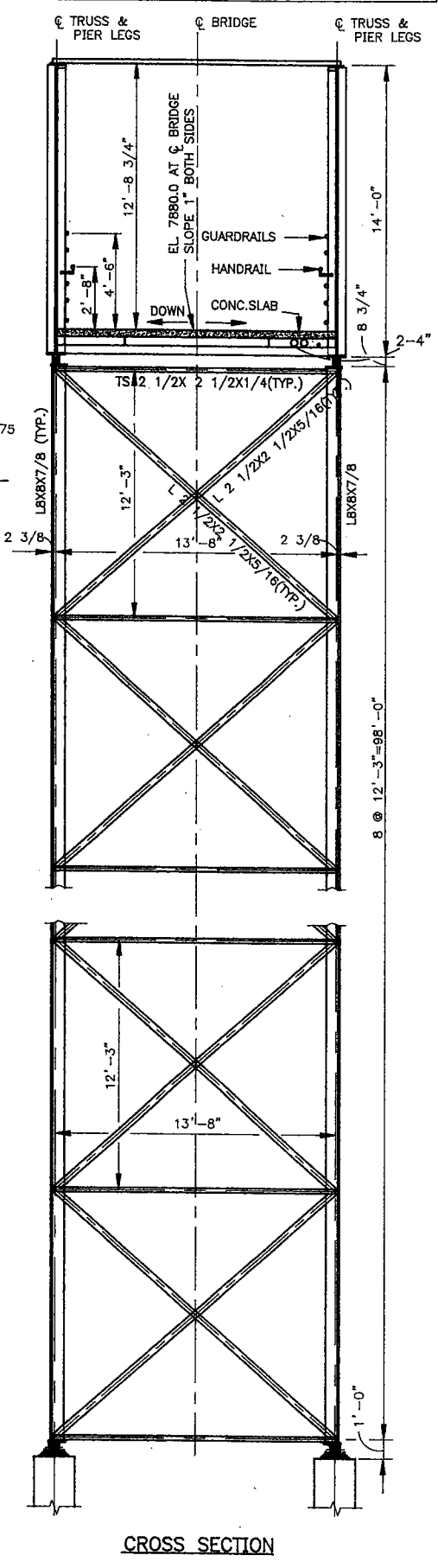
Design	INITIAL	DATE	Quantities	
			By	Date



PLAN
SCALE : 1" = 50'



ELEVATION
SCALE : 1" = 50'



CROSS SECTION

MEHEEN ENGINEERING, CORPORATION

PITKIN COUNTY

MAROON CREEK PED/BIKE BRIDGE

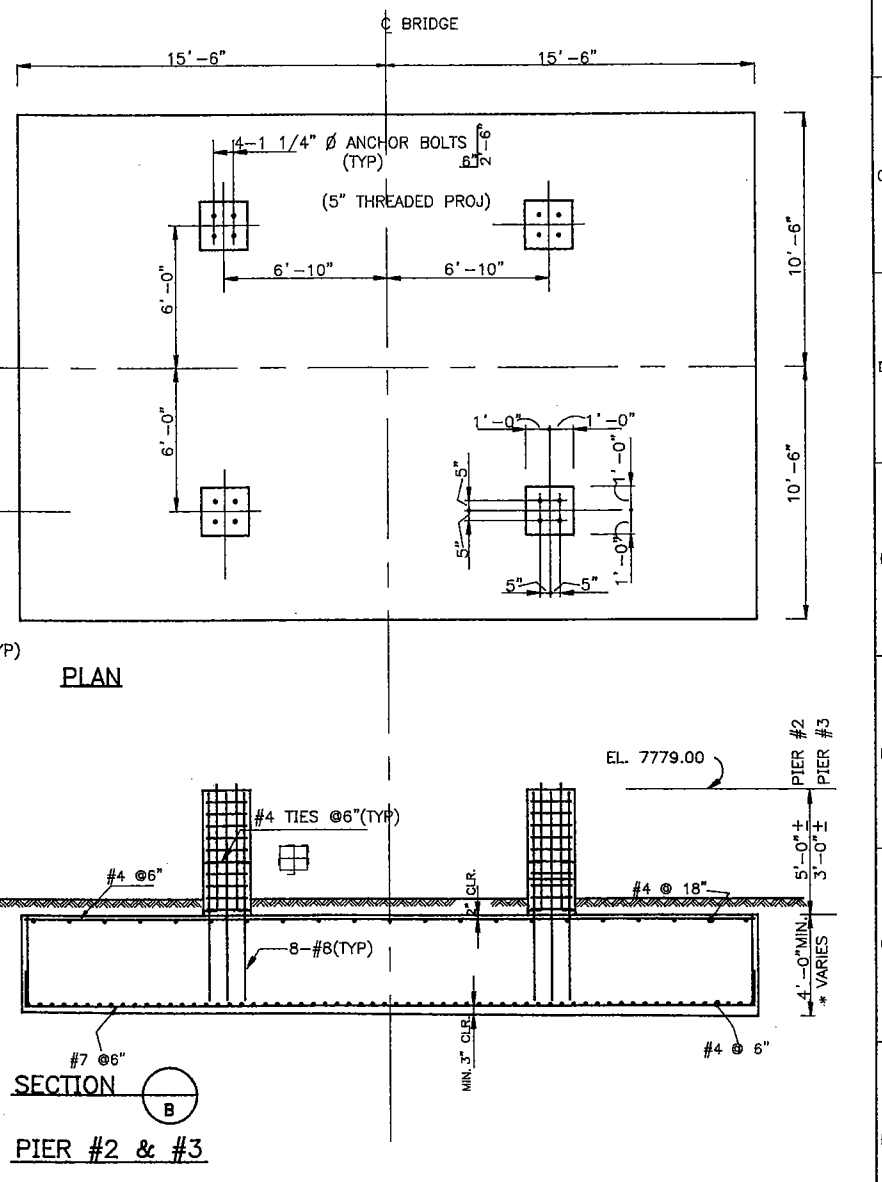
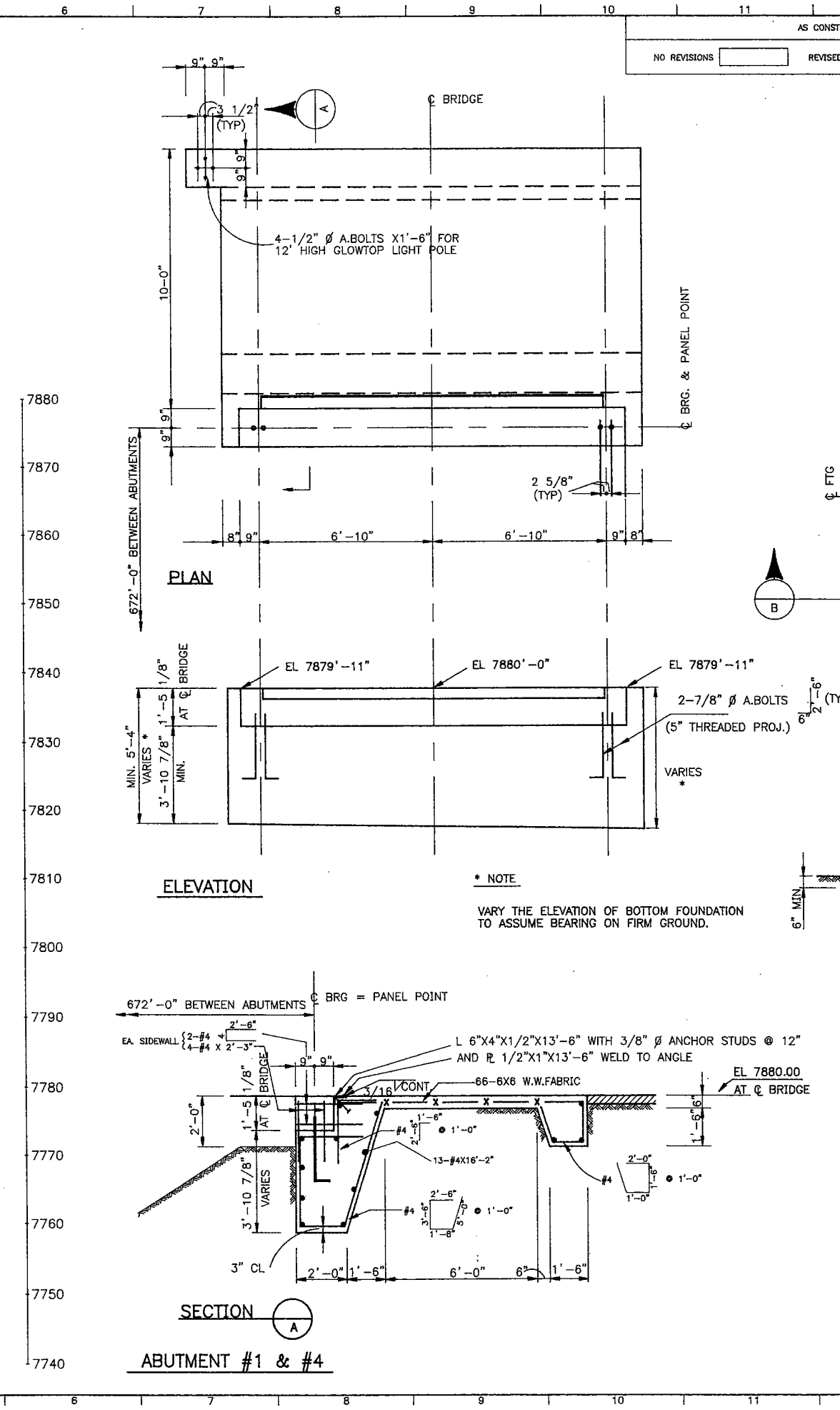
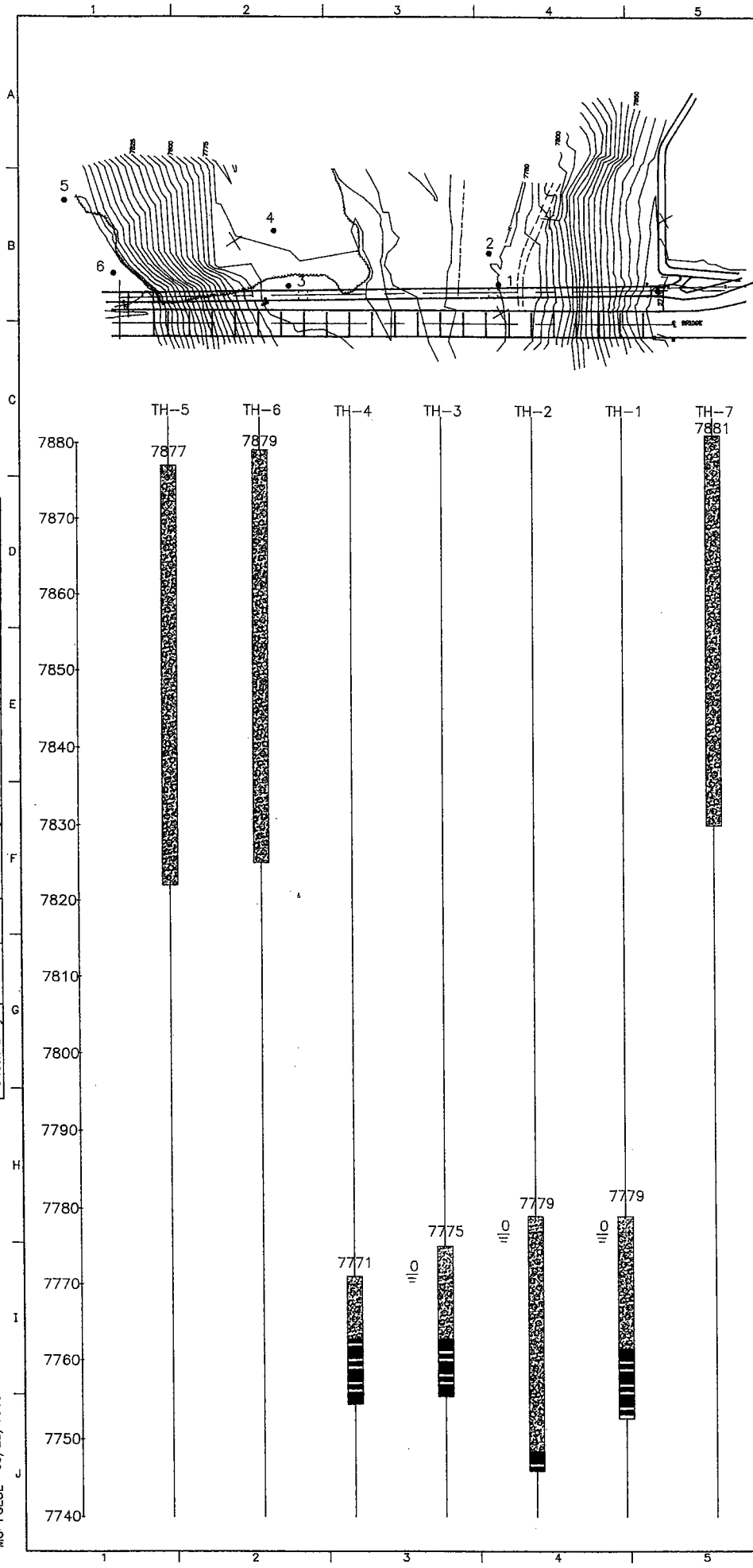
GENERAL LAYOUT

Designer	H. JOE MEHEEN	Structure	
Detailer	E. KHANI	Numbers	
Drawing Number	B-2	of	Drawings

MC-FGLAY 04/13/1995

Revision	Dates	(Preliminary Stage Only)

AS CONSTRUCTED											PROJECT NUMBER		SHEET NUMBER	
NO REVISIONS			REVISED			VOID								
REVISIONS														



Design		Detail		Quantities	
INITIAL	DATE	INITIAL	DATE	INITIAL	DATE

MC-FGEOL 05/23/1995

MEHEEN ENGINEERING CORPORATION

PITKIN COUNTY

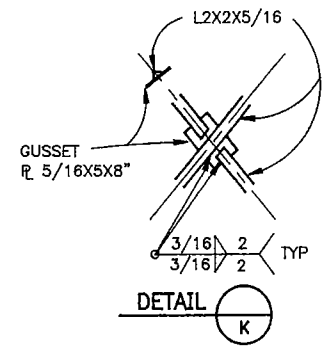
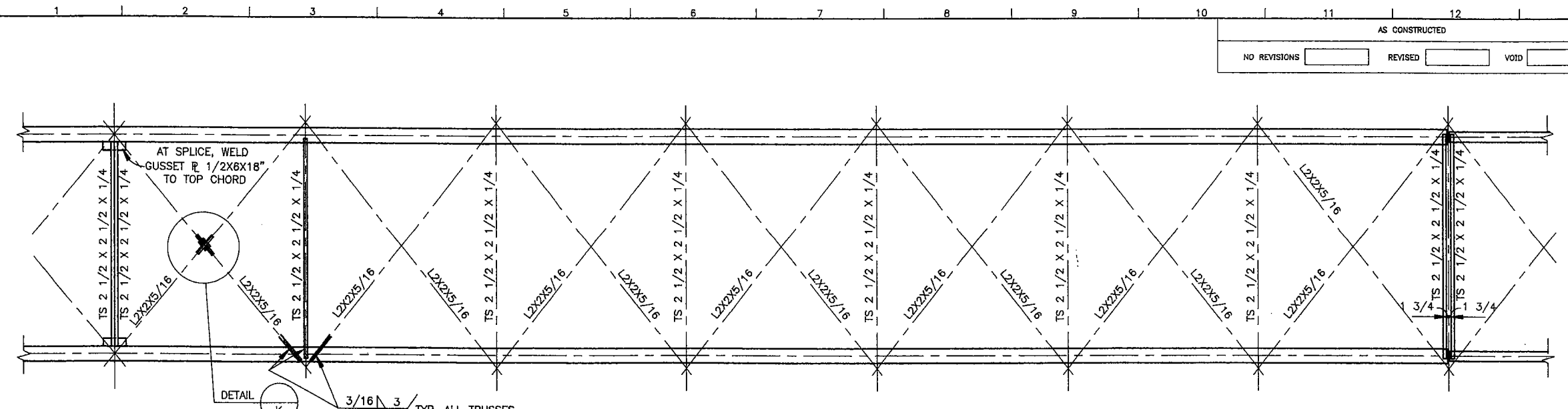
MAROON CREEK PED/BIKE BRIDGE
ENGINEERING GEOLOGY AND
FOUNDATION DETAILS.

Designer	H. JOE MEHEEN	Structure	
Detailer	E. KHANI	Numbers	
Drawing Number	B-3	of	Drawings

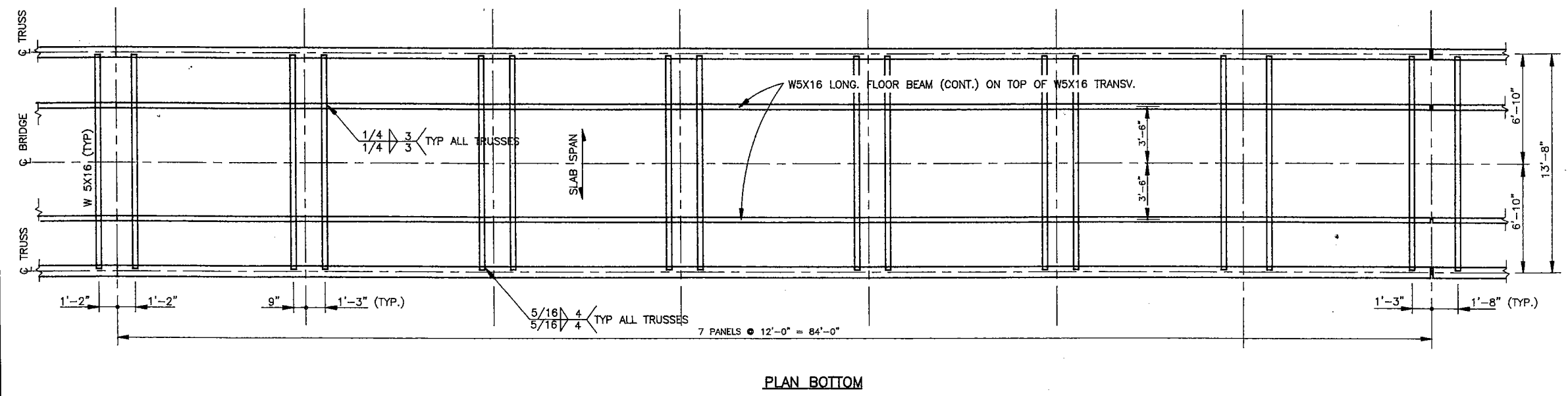
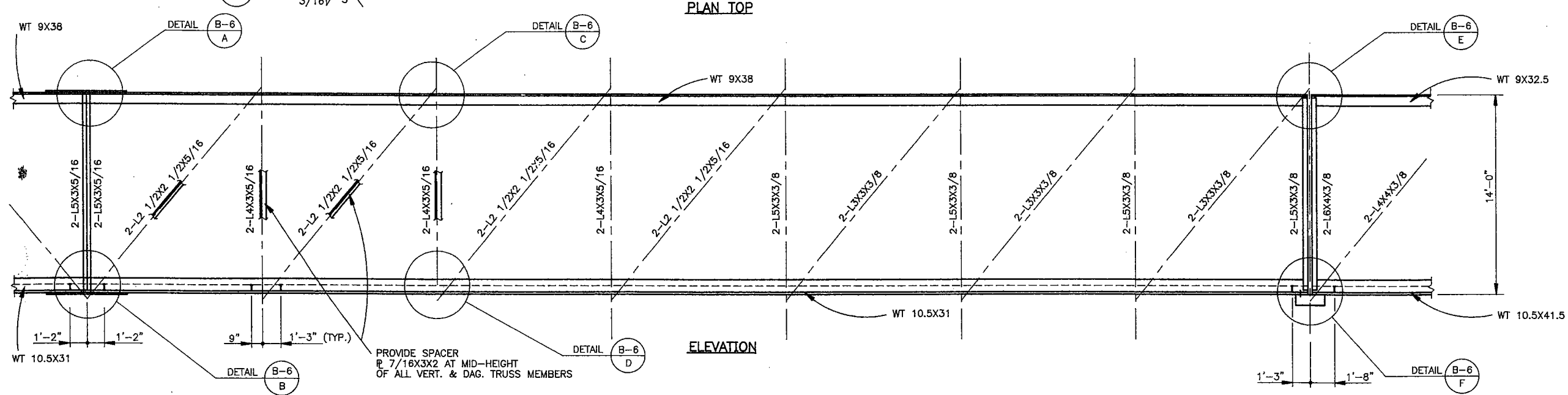
Revision Dates (Preliminary Stage Only)

AS CONSTRUCTED
 NO REVISIONS REVISED VOID

PROJECT NUMBER	15	SHEET NUMBER	16
REVISIONS			



Design		Detail		Quantities	
INITIAL	DATE	INITIAL	DATE	INITIAL	DATE



MEHEEN ENGINEERING CORPORATION

PITKIN COUNTY

MAROON CREEK PED./BIKE BRIDGE

INTERIOR TRUSS

PLANS & ELEVATION

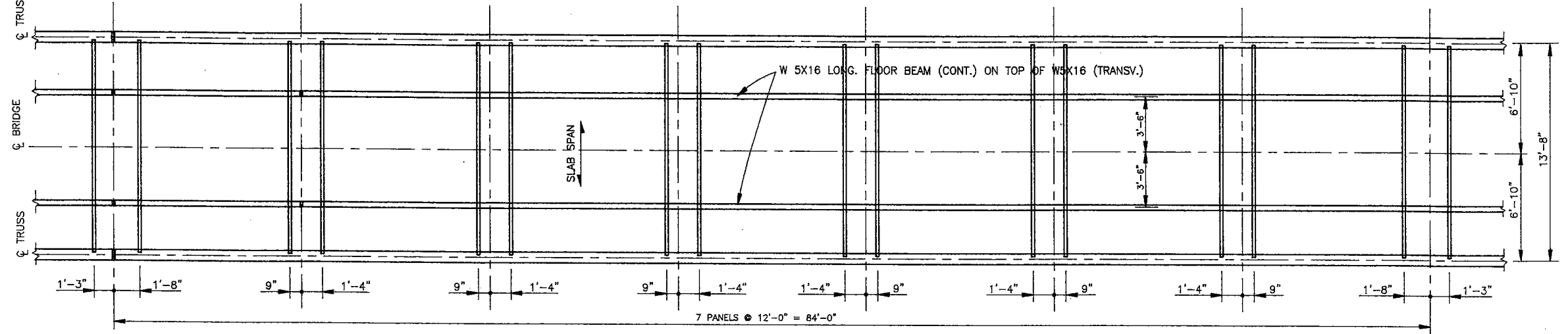
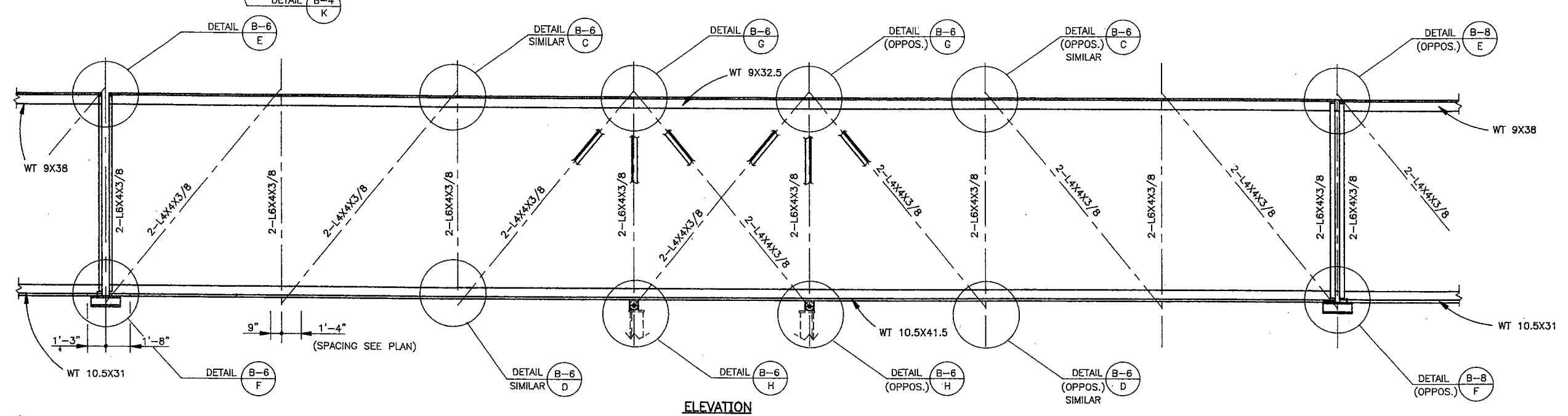
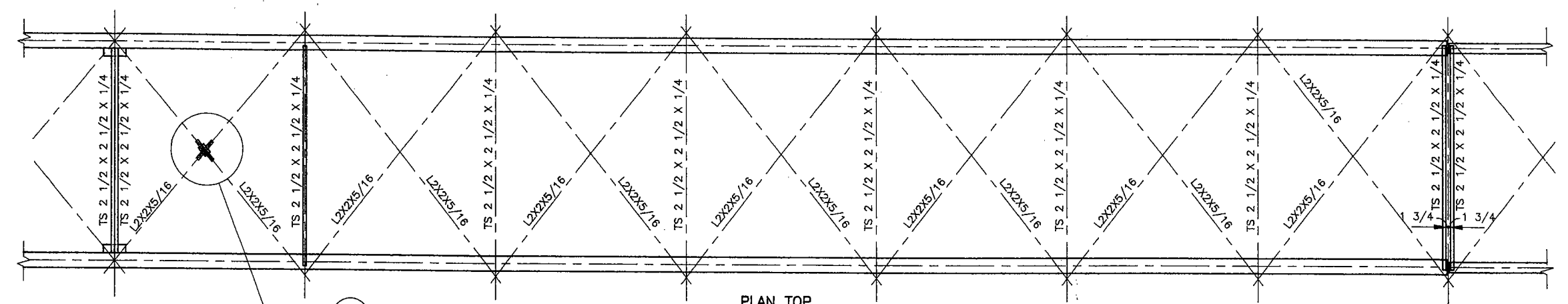
Designer	H. JOE MEHEEN	Structure	
Detailer	E. KHANI	Numbers	
Drawing Number	B-4	of	Drawings

Revision Dates (Preliminary Stage Only)

05/21/1995 MC-FTRIN

AS CONSTRUCTED			PROJECT NUMBER	SHEET NUMBER
NO REVISIONS	REVISED	VOID		

REVISIONS	



Design		Detail		Quantities	
INITIAL	DATE	INITIAL	DATE	INITIAL	DATE

05/21/1995 MC-FTRPR

MEHEEN ENGINEERING CORPORATION

PITKIN COUNTY

MAROON CREEK PED./BIKE BRIDGE

PIER TRUSS

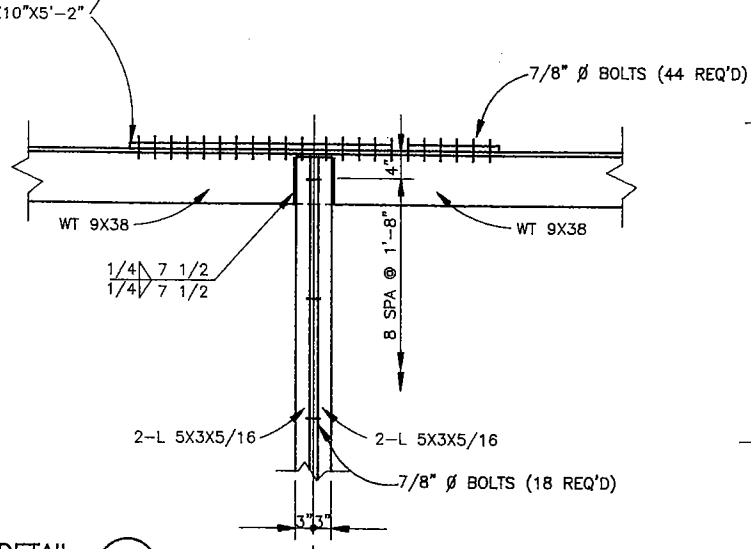
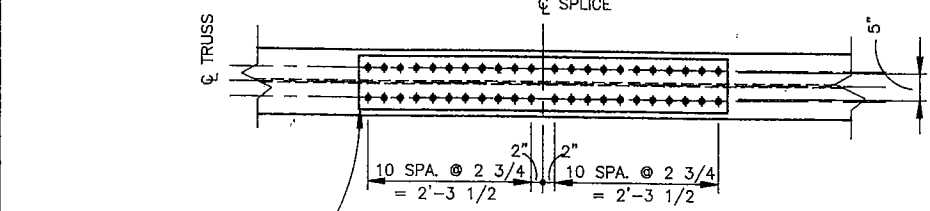
PLANS & ELEVATION

Designer	H. JOE MEHEEN	Structure	
Detailer	E. KHANI	Numbers	
Drawing Number B-5		of Drawings	

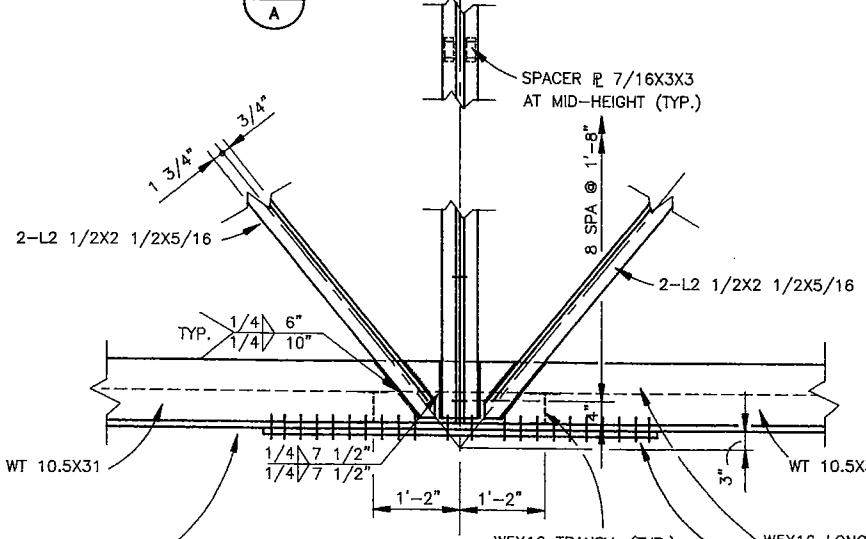
Revision	Dates	(Preliminary Stage Only)

REVISIONS	

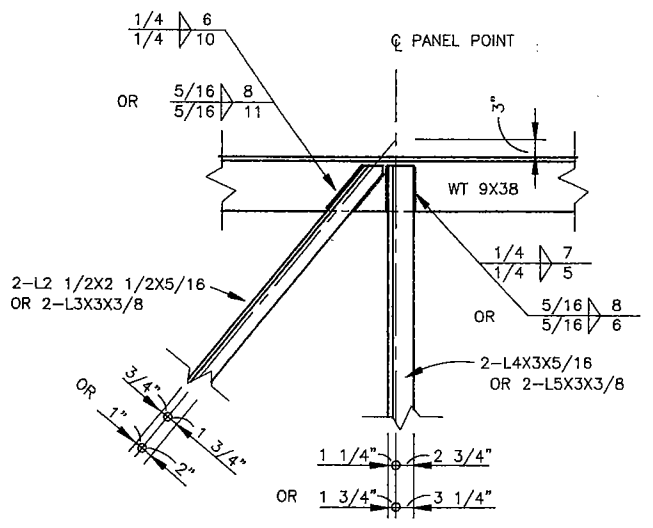
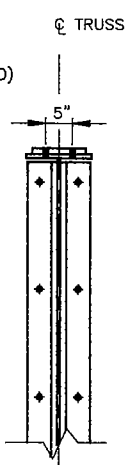
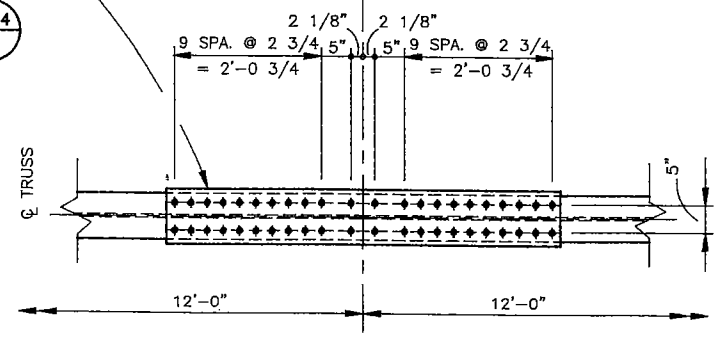
Design		Detail		Quantities	
INITIAL	DATE	INITIAL	DATE	INITIAL	DATE



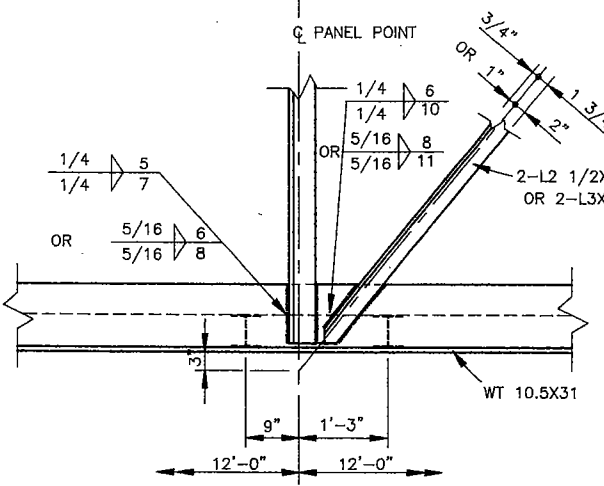
DETAIL B-4
A



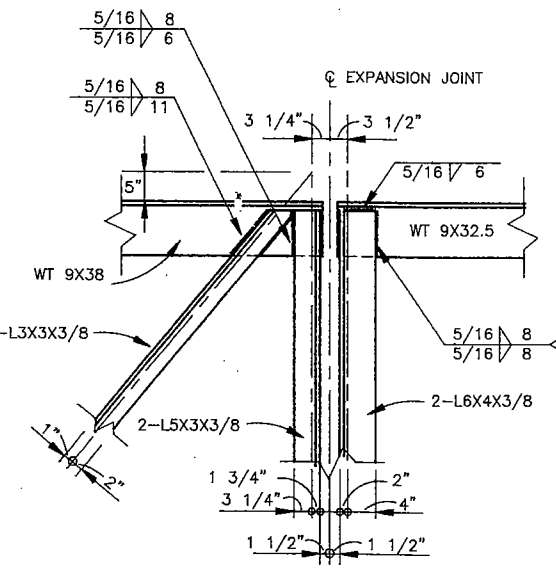
DETAIL B-4
B



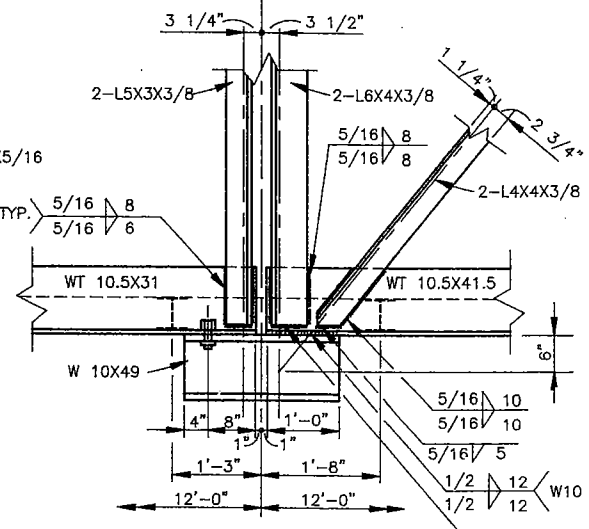
DETAIL B-4
C



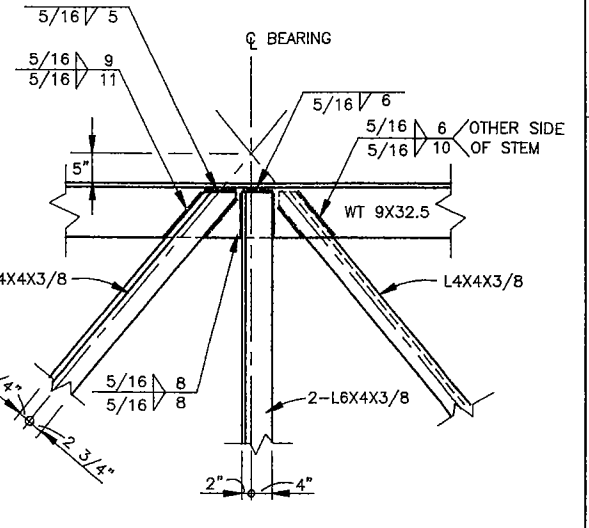
DETAIL B-4
D



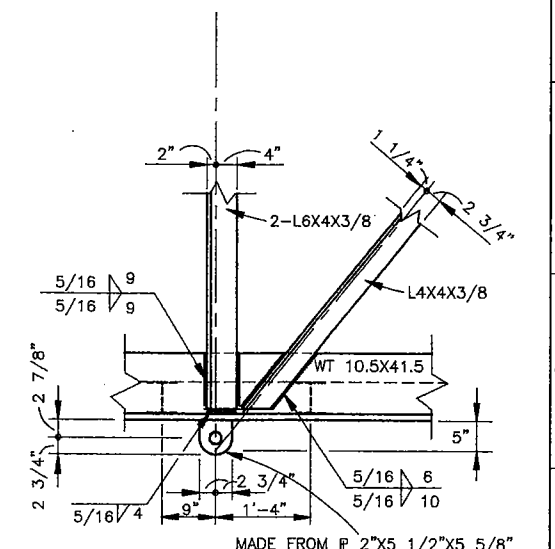
DETAIL B-4
E



DETAIL B-4
F



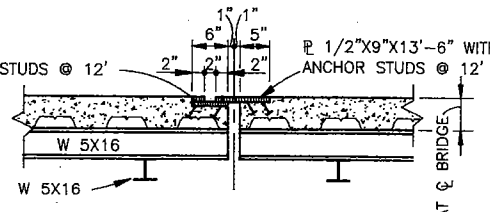
DETAIL B-5
G



DETAIL B-5
H

TYPICAL PANEL POINTS
(AS SHOWN OR OPPOSITE)

1/2"X6"X13"-6" WITH 3/8" Ø ANCHOR STUDS @ 12"
AND 1/2"X1"X13"-6" WELD TO TOP



SECTION AT DETAIL F AND @ BRIDGE

MEHEEN ENGINEERING CORPORATION

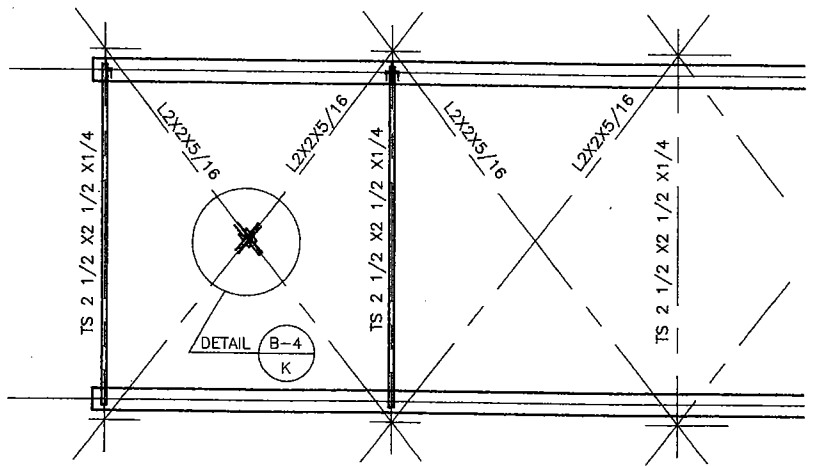
PITKIN COUNTY	
MAROON CREEK PED/BIKE BRIDGE	
TRUSS DETAILS	
Designer H. JOE MEHEEN	Structure
Detailer E. KHANI	Numbers
Drawing Number B-6	of Drawings

Revision Dates	(Preliminary Stage Only)
B-94	

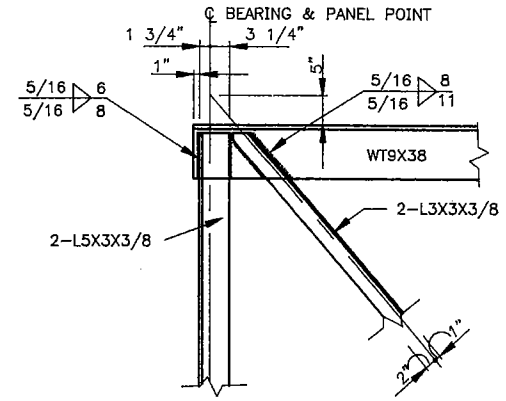
05/21/1995 MC-FTRDE

AS CONSTRUCTED		
NO REVISIONS	REVISED	VOID

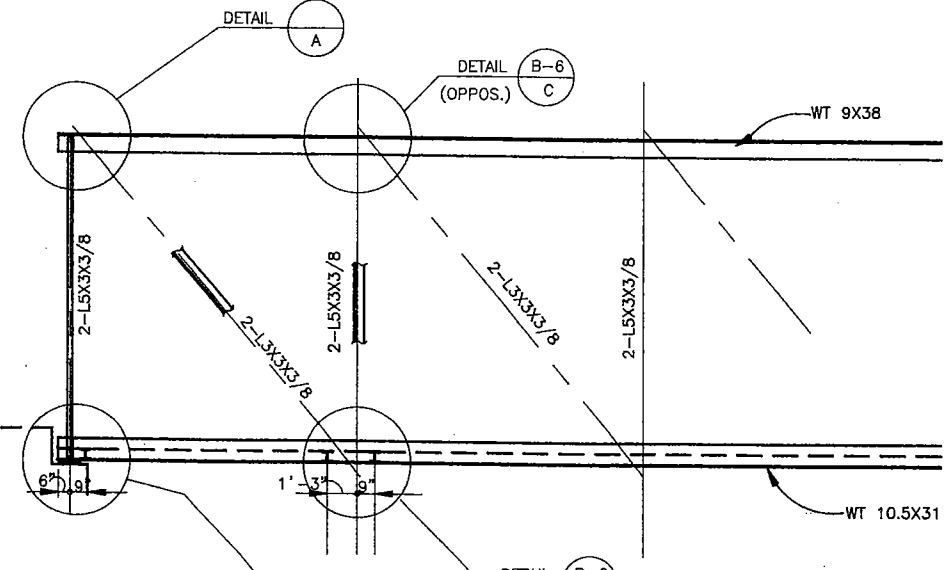
PROJECT NUMBER	SHEET NUMBER
REVISIONS	



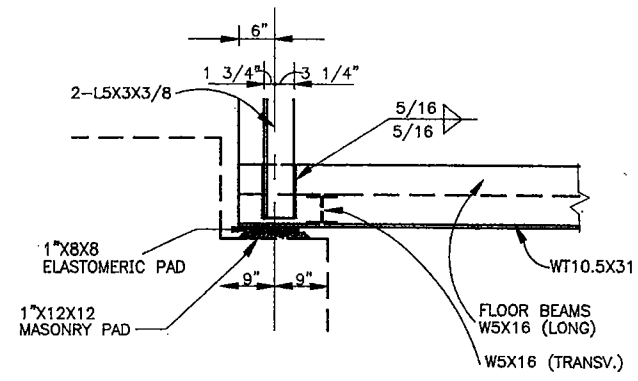
PLAN TOP



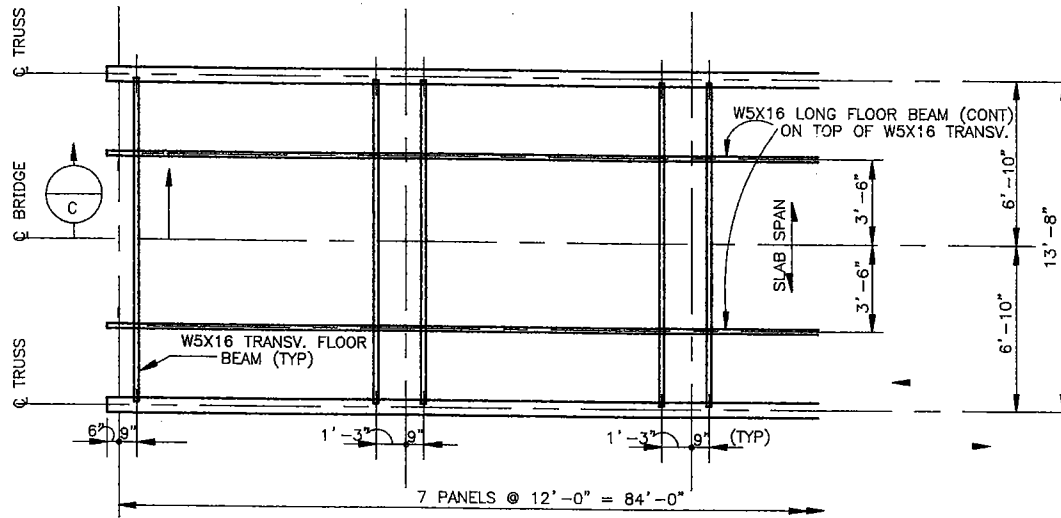
DETAIL A



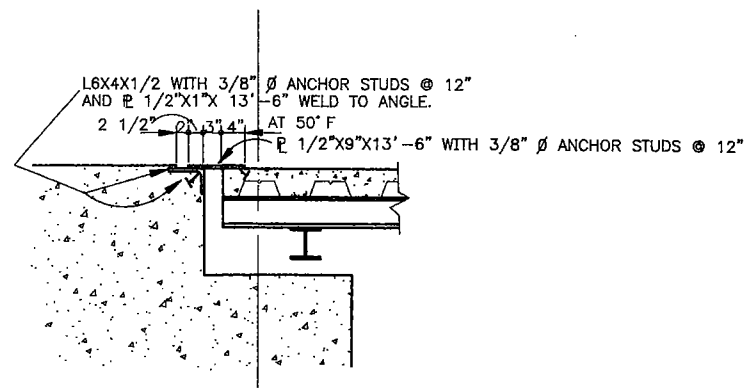
ELEVATION



DETAIL B



PLAN BOTTOM



SECTION C

CONTINUATION OF END TRUSS SAME AS INTERIOR TRUSS

Design		Detail		Quantities	
Designed By	INITIAL	Detailed By	INITIAL	Quantity	DATE
Checked By		Checked By			

MC-FTREN 07/09/1995

MEHEEN ENGINEERING CORPORATION

PITKIN COUNTY

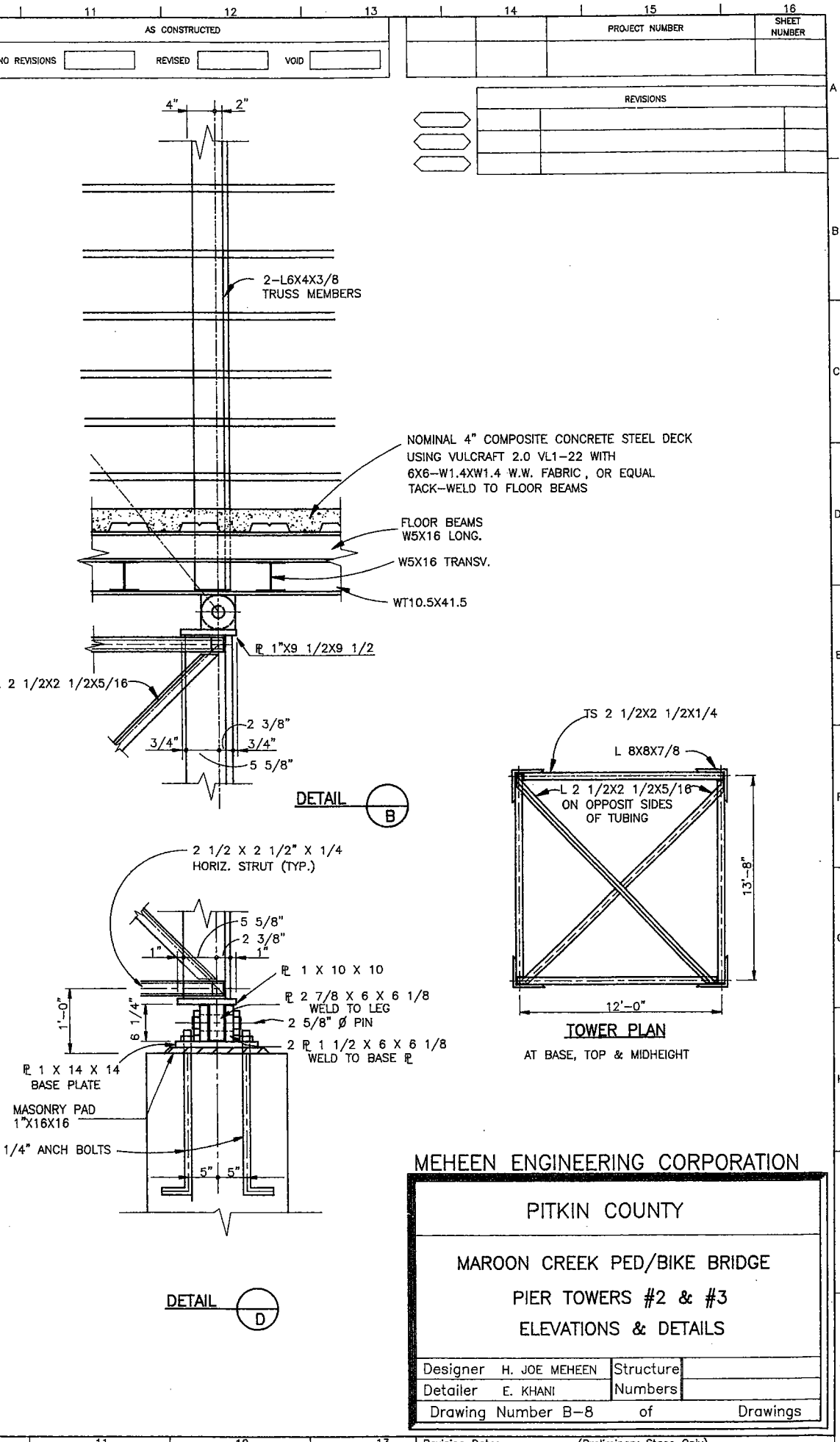
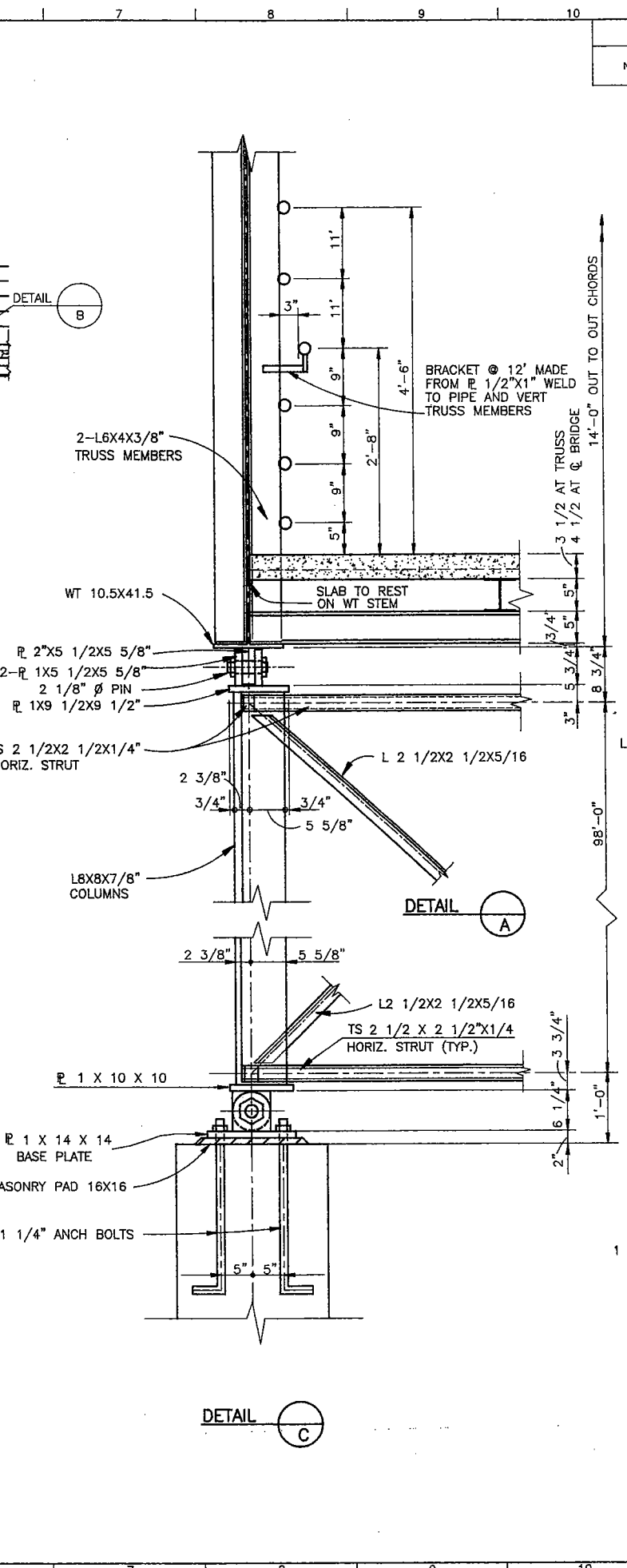
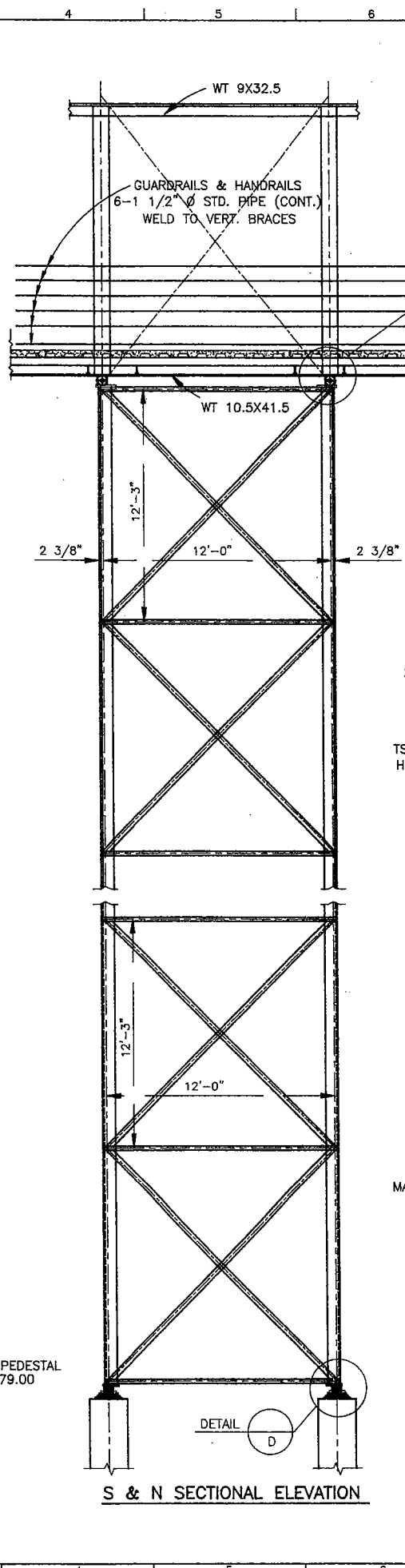
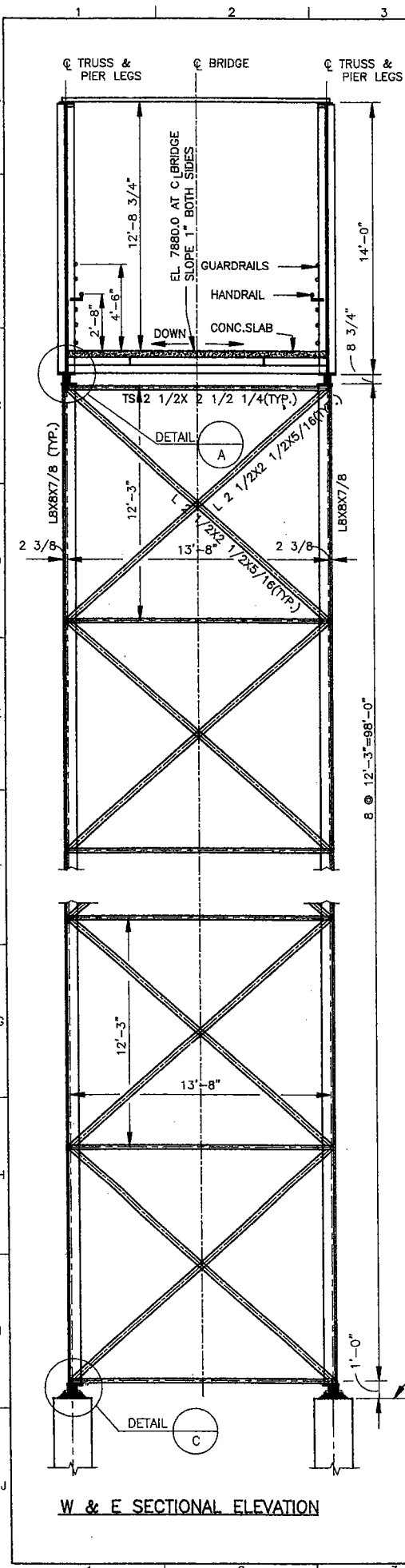
MAROON CREEK PED/BIKE BRIDGE
END TRUSS
PLANS, ELEVATION & DETAILS

Designer	H. JOE MEHEEN	Structure	
Detailer	E. KHANI	Numbers	
Drawing Number B-7		of	Drawings

Revision Dates	(Preliminary Stage Only)

AS CONSTRUCTED			PROJECT NUMBER	SHEET NUMBER
NO REVISIONS	REVISED	VOID		
REVISIONS				

Quantities		Detail		Design	
INITIAL	DATE	INITIAL	DATE	INITIAL	DATE



MEHEEN ENGINEERING CORPORATION

PITKIN COUNTY

MAROON CREEK PED/BIKE BRIDGE

PIER TOWERS #2 & #3

ELEVATIONS & DETAILS

Designer	H. JOE MEHEEN	Structure	
Detailer	E. KHANI	Numbers	
Drawing Number	B-8	of	Drawings

Revision Dates (Preliminary Stage Only)

MC-FPRTW 01/06/1995