



Project Update: Week ending June 24, 2016

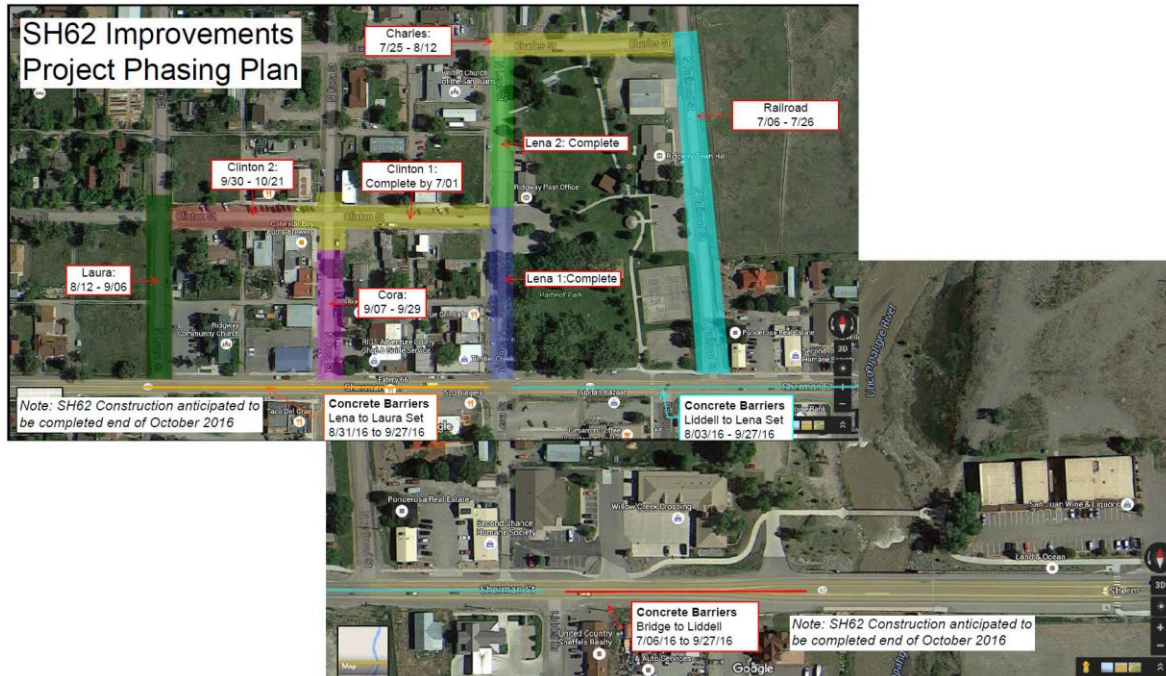
With sunny skies in the forecast and no major town events, ACC is looking forward to a strong production week starting on Monday, June 27, 2016. This outlook is good because we have a lot of work to get done before the long fourth of July weekend.

Next week we plan to finish up in three different areas. First of all, crews will finish the concrete and utility work at the intersection of Clinton and Cora followed by asphalt paving from that intersection to Lena. Paving will be wrapped up, and roads opened to traffic, by close of business on Friday. The second work area involves the concrete work on Lena street between Clinton and Charles. The work within the block, where we have paved, will be complete but crews will not be addressing the intersection at Charles and Lena until late July – early August. The final area of significant activity next week will be on SH 62 where crews will finish building the shoofly which will be paved on Thursday or Friday.

ACC will be off-site until Wednesday, July 6 at 7 a.m. in honor of the Independence Day Holiday. Upon our return, we will focus our efforts on two areas with the most significant impact being along SH 62. ACC will shift the traffic onto the shoofly and begin to place concrete barrier to delineate the traffic lanes from the construction zone. The first area that will be barricaded is from the bridge to Liddell. Drivers needing to access any of these businesses will need to turn on Liddell and enter from behind. The flaggers will help guide customers to the businesses and minimize the frustration. The scope of work in this area is the placement of large diameter drainage pipe along SH 62. After we get going you will appreciate why the lane closure is necessary as crews will be maneuvering within a large excavation in the southern lane.

The second area of focus will be on north Railroad street. ACC will spend about 20 days in this area doing drainage work, utilities, curb, gutter, grading and paving. We will provide more detail on closures and alternate access next week.

Below is a graphic depicting the progress of the work and our anticipated phasing plan. I hope you find this helpful. We will work to update it as we finish key sections of the work.



Please be alert to personnel in the work zone and drive slow through the cone zone!
 Public Information: [970-430-0933](tel:970-430-0933) Email: SH62Ridgway@accbuilt.com