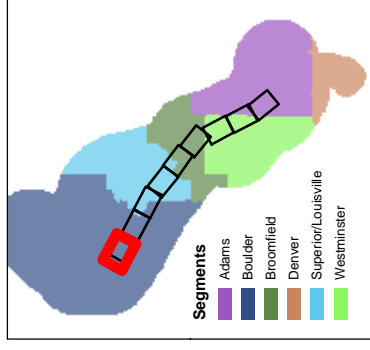

APPENDIX A

MAPS OF THE PROPOSED ACTION (PHASE 1)



Legend
Appendix A -
Corridor Reference Maps
Phase I

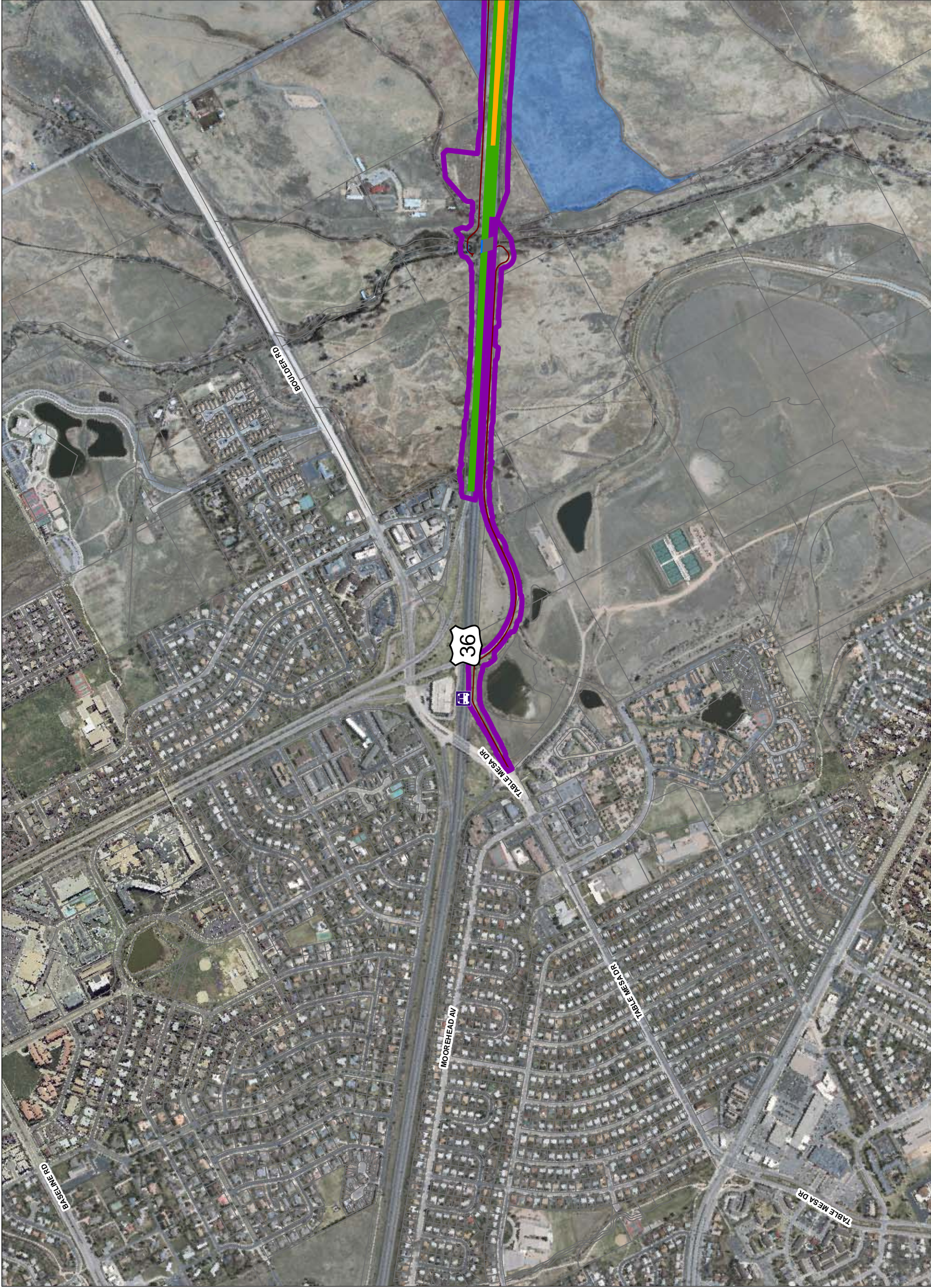
- US 36 Combined Alternative
- Phase I Impact Area (Preferred Alternative)
- Parcel Boundary
- Partial Property Acquisition
- Full Property Acquisition
- Managed Lanes and Transit Stations
- General-Purpose Lanes
- Arterial Improvements
- Existing Bridges
- New Bridges
- Bikeway
- Work by Others
- BRT/Rail Station
- BRT Station

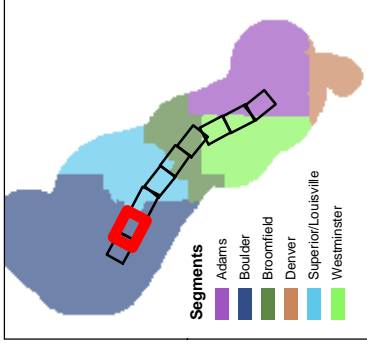


0 250 500
 Scale in Feet

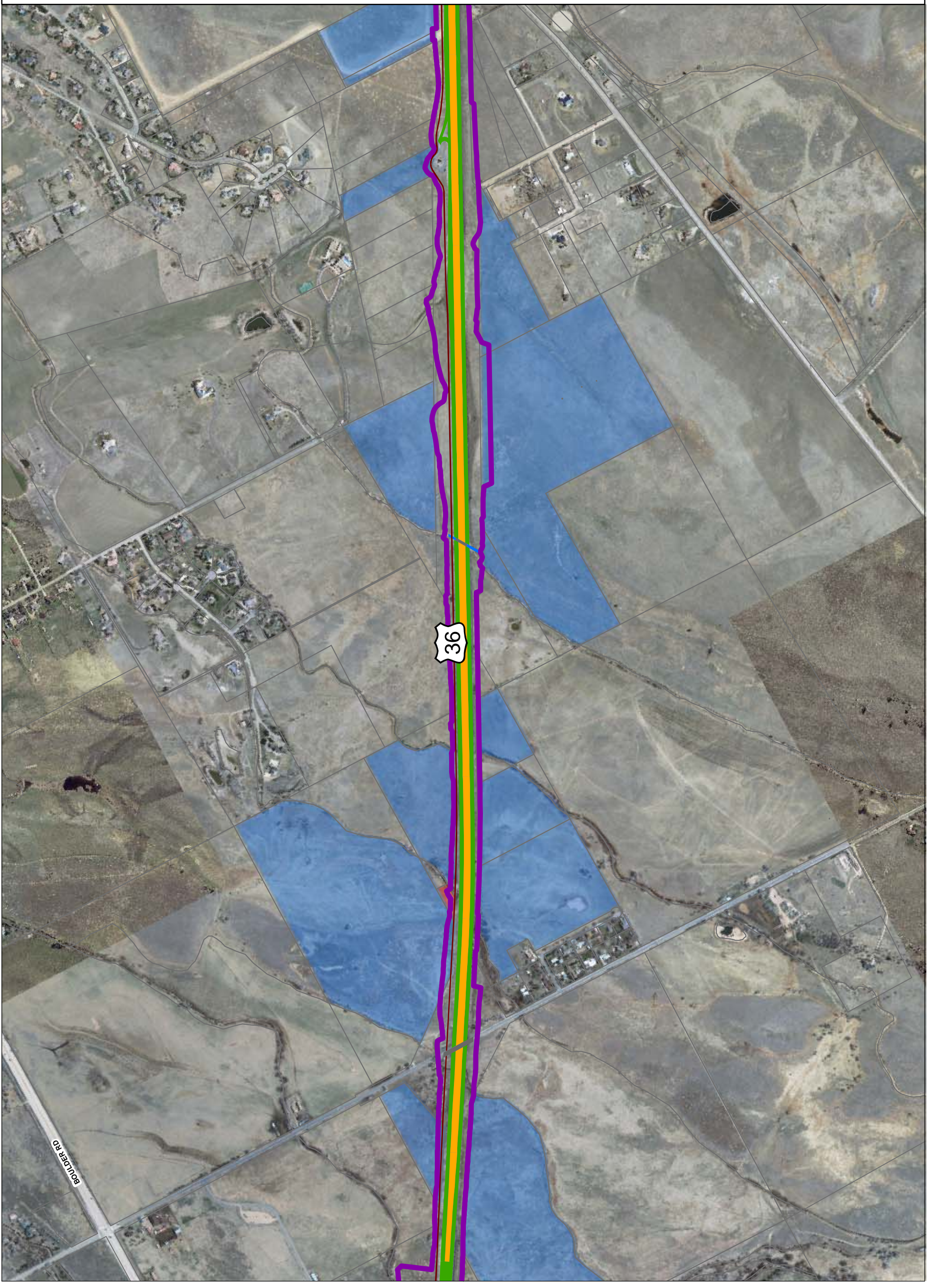
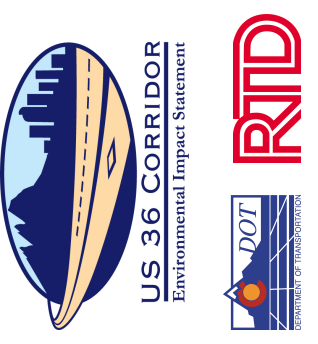
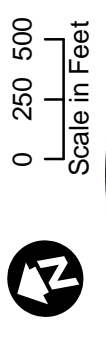


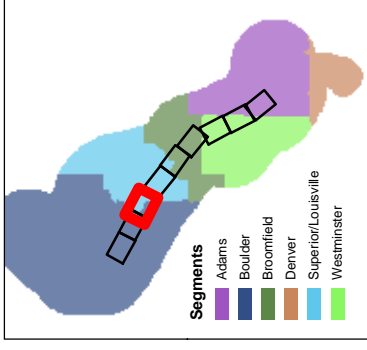
US 36 CORRIDOR
 Environmental Impact Statement





- Legend**
Appendix A -
Corridor Reference Maps
Phase I
- US 36 Combined Alternative Phase I Impact Area (Preferred Alternative)
 - Parcel Boundary
 - Partial Property Acquisition
 - Full Property Acquisition
 - Managed Lanes and Transit Stations
 - General-Purpose Lanes
 - Arterial Improvements
 - Existing Bridges
 - New Bridges
 - Bikeway
 - Work by Others
 - BRT/Rail Station
 - BRT Station





Legend Appendix A - Corridor Reference Maps Phase I

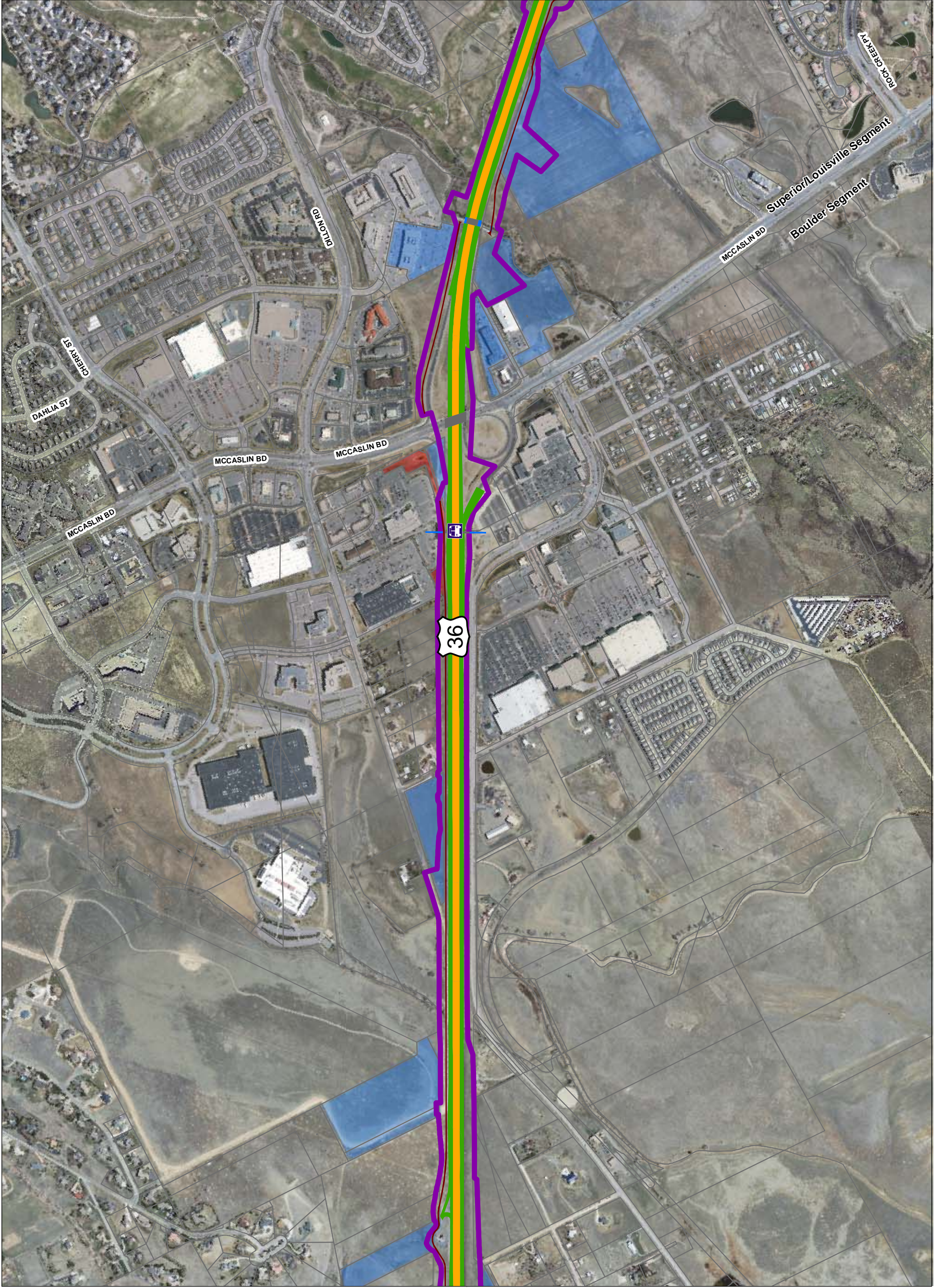
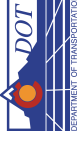
- US 36 Combined Alternative Phase I Impact Area (Preferred Alternative)
- Parcel Boundary
- Partial Property Acquisition
- Full Property Acquisition
- Managed Lanes and Transit Stations
- General-Purpose Lanes
- Arterial Improvements
- Existing Bridges
- New Bridges
- Bikeway
- Work by Others
- BRT/Rail Station
- BRT Station

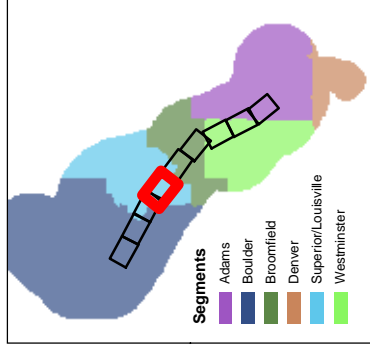


0 250 500
Scale in Feet



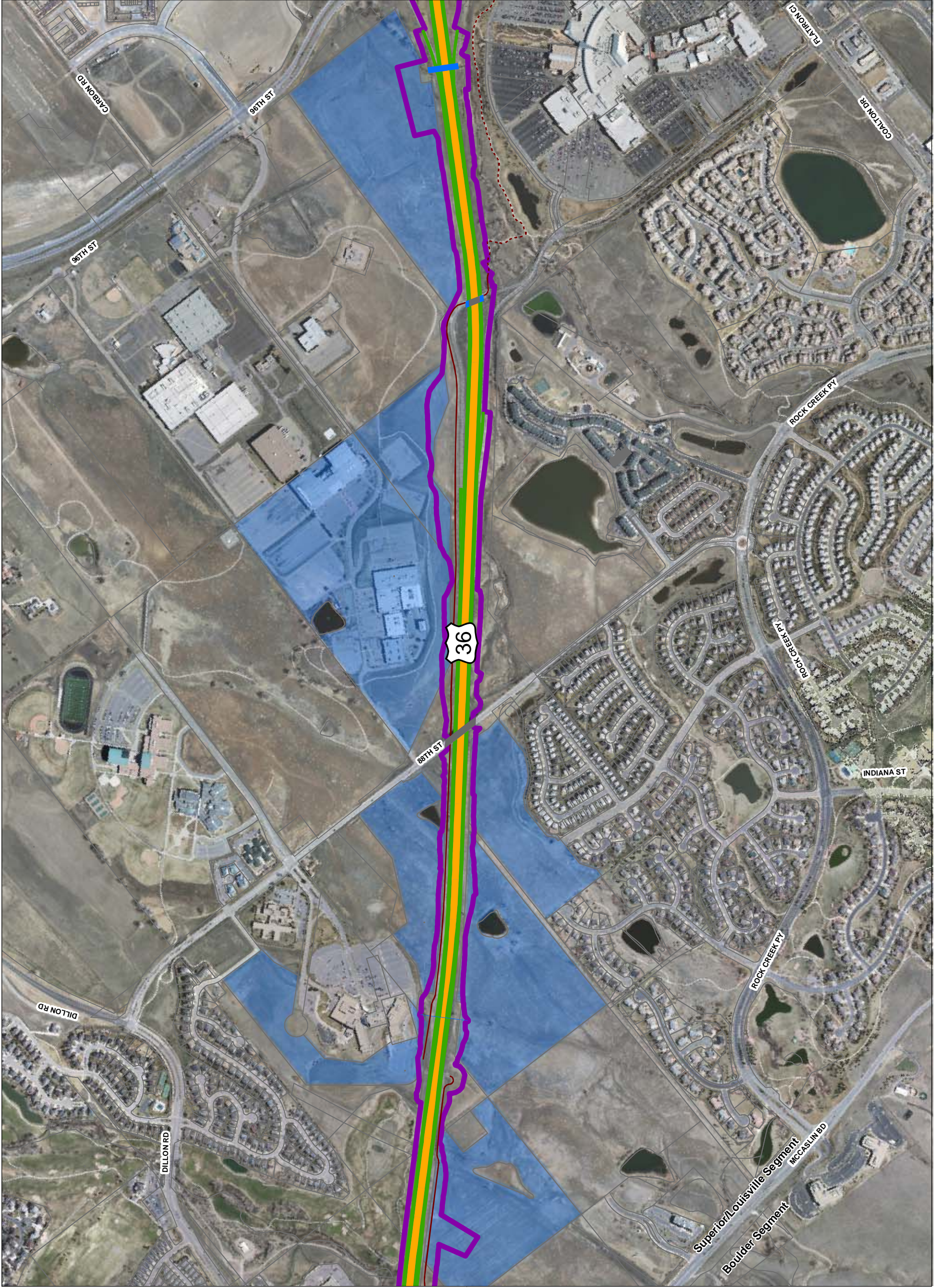
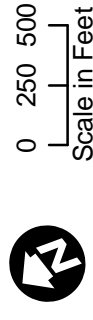
US 36 CORRIDOR
Environmental Impact Statement

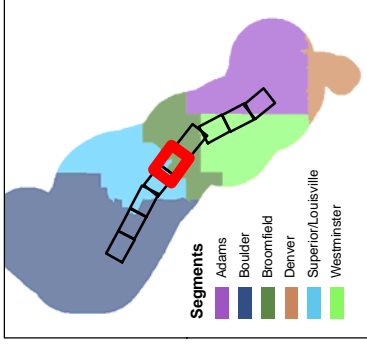




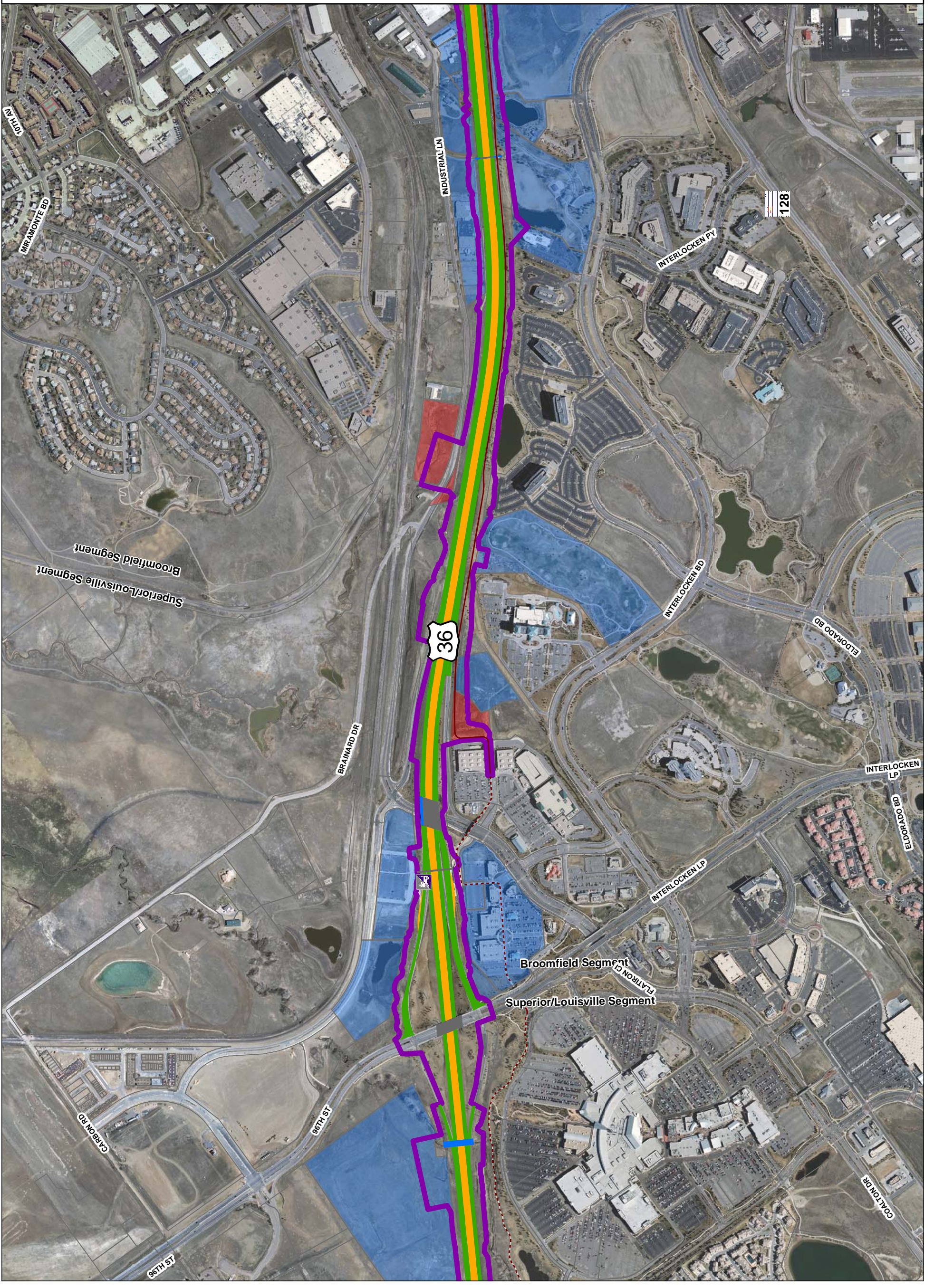
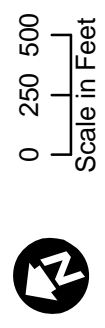
Legend
Appendix A -
Corridor Reference Maps
Phase I

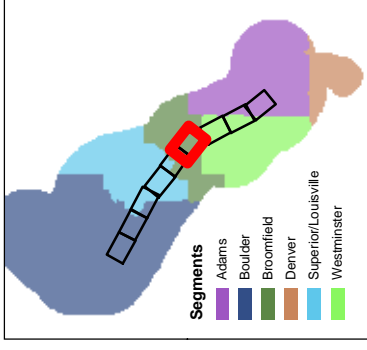
- US 36 Combined Alternative Phase I Impact Area (Preferred Alternative)
- Parcel Boundary
- Partial Property Acquisition
- Full Property Acquisition
- Managed Lanes and Transit Stations
- General-Purpose Lanes
- Arterial Improvements
- Existing Bridges
- New Bridges
- Bikeway
- Work by Others
- BRT/Rail Station
- BRT Station



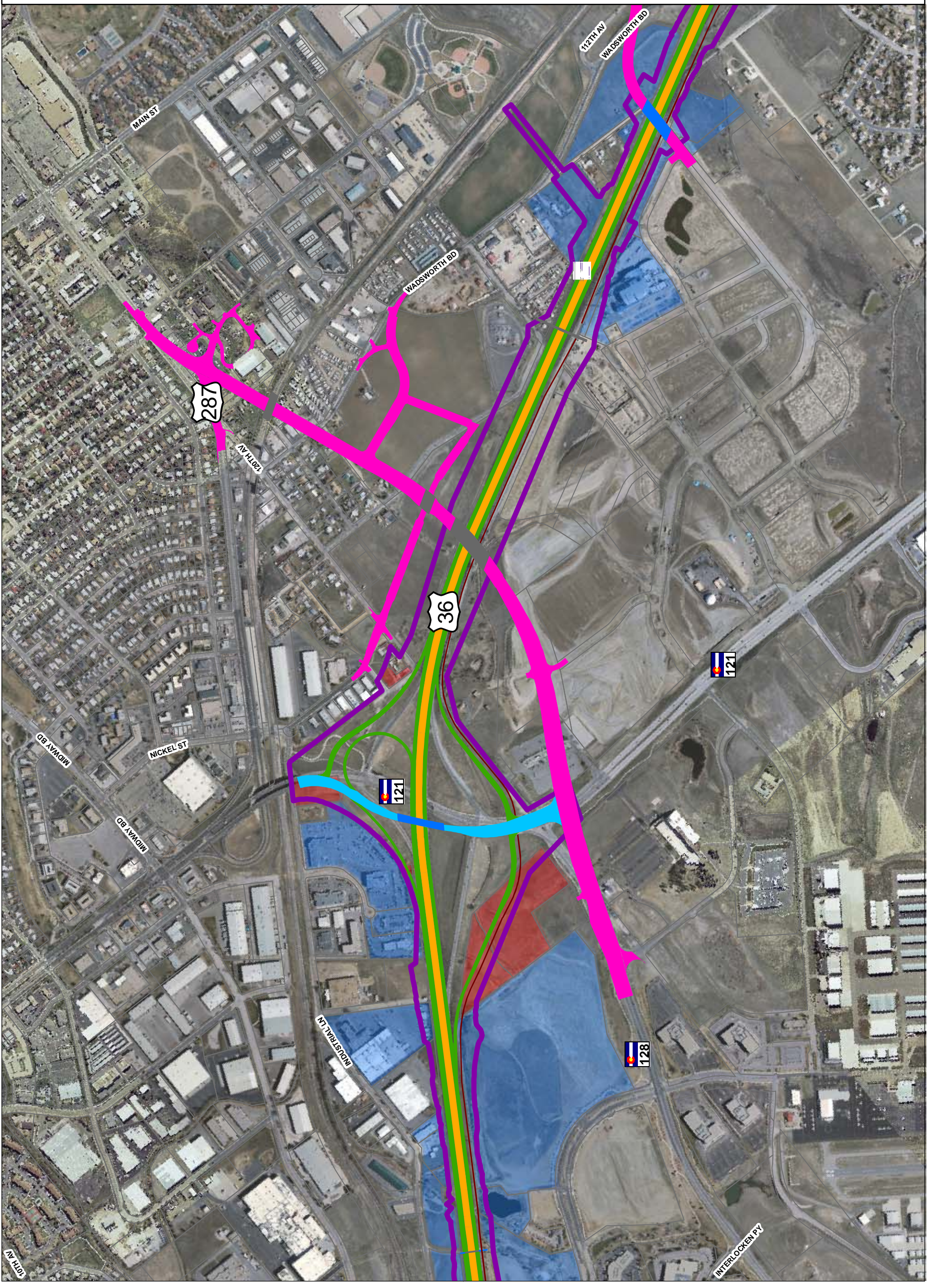
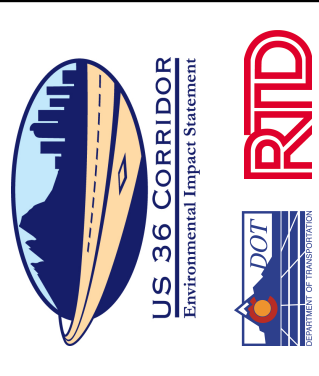
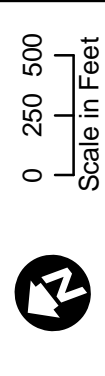


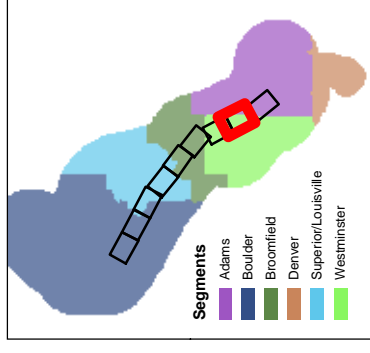
- Legend**
Appendix A -
Corridor Reference Maps
Phase I
- US 36 Combined Alternative Phase I Impact Area (Preferred Alternative)
 - Parcel Boundary
 - Partial Property Acquisition
 - Full Property Acquisition
 - Managed Lanes and Transit Stations
 - General-Purpose Lanes
 - Arterial Improvements
 - Existing Bridges
 - New Bridges
 - Bikeway
 - Work by Others
 - BRT/Rail Station
 - BRT Station



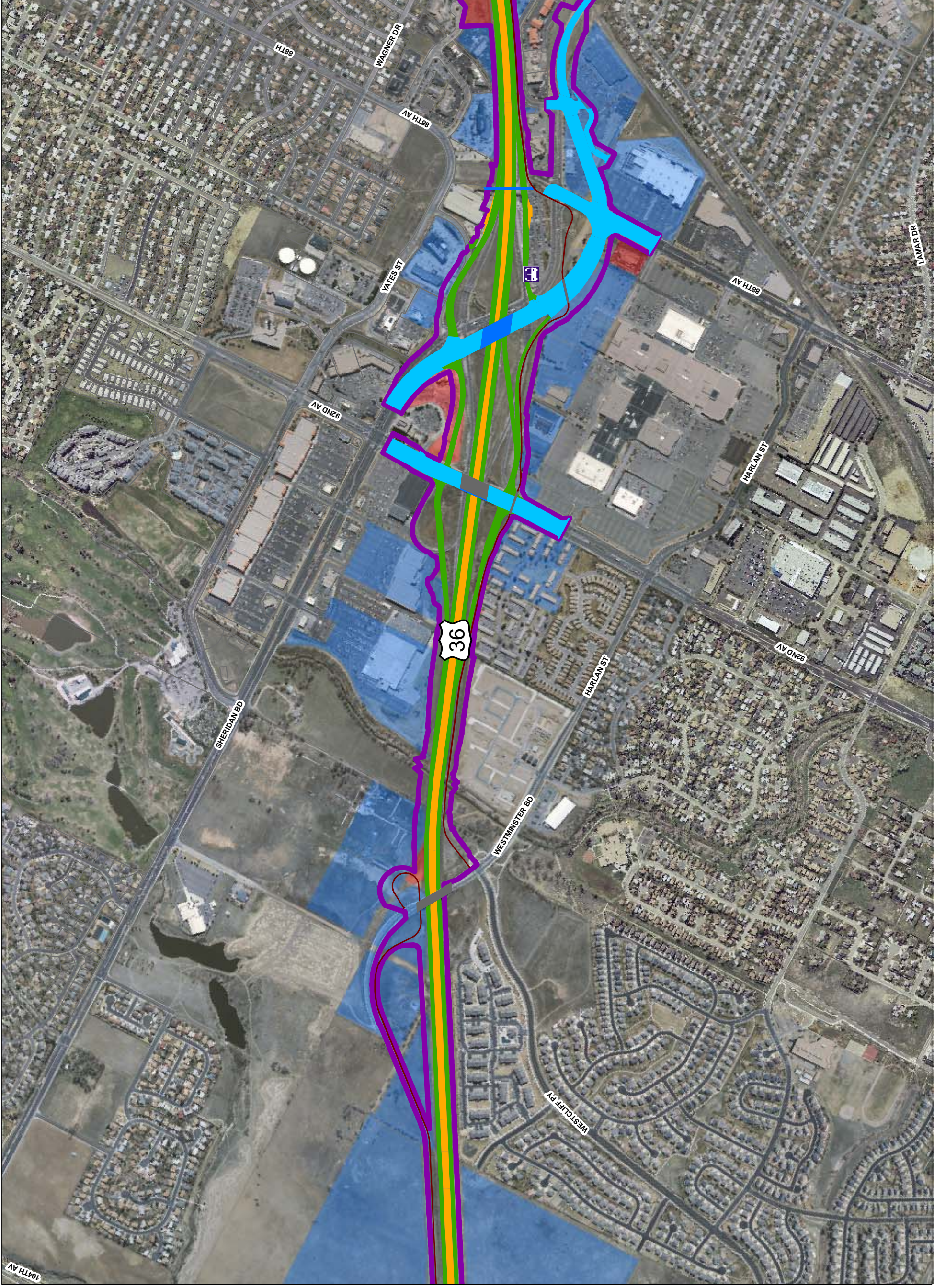
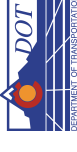
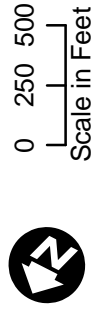


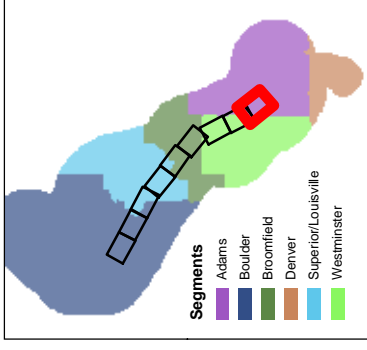
- Legend**
Appendix A -
Corridor Reference Maps
Phase I
- US 36 Combined Alternative
 - Phase I Impact Area (Preferred Alternative)
 - Parcel Boundary
 - Partial Property Acquisition
 - Full Property Acquisition
 - Managed Lanes and Transit Stations
 - General-Purpose Lanes
 - Arterial Improvements
 - Existing Bridges
 - New Bridges
 - Bikeway
 - Work by Others
 - BRT/Rail Station
 - BRT Station





- Legend**
Appendix A -
Corridor Reference Maps
Phase I
- US 36 Combined Alternative Phase I Impact Area (Preferred Alternative)
 - Parcel Boundary
 - Partial Property Acquisition
 - Full Property Acquisition
 - Managed Lanes and Transit Stations
 - General-Purpose Lanes
 - Arterial Improvements
 - Existing Bridges
 - New Bridges
 - Bikeway
 - Work by Others
 - BRT/Rail Station
 - BRT Station





Legend Appendix A - Corridor Reference Maps Phase I

- US 36 Combined Alternative
- Phase I Impact Area (Preferred Alternative)
- Parcel Boundary
- Partial Property Acquisition
- Full Property Acquisition
- Managed Lanes and Transit Stations
- General-Purpose Lanes
- Arterial Improvements
- Existing Bridges
- New Bridges
- Bikeway
- Work by Others
- BRT/Rail Station
- BRT Station



0 250 500
Scale in Feet



US 36 CORRIDOR
Environmental Impact Statement

