



Full Closure Announcement - Sept. 14 - Oct. 8

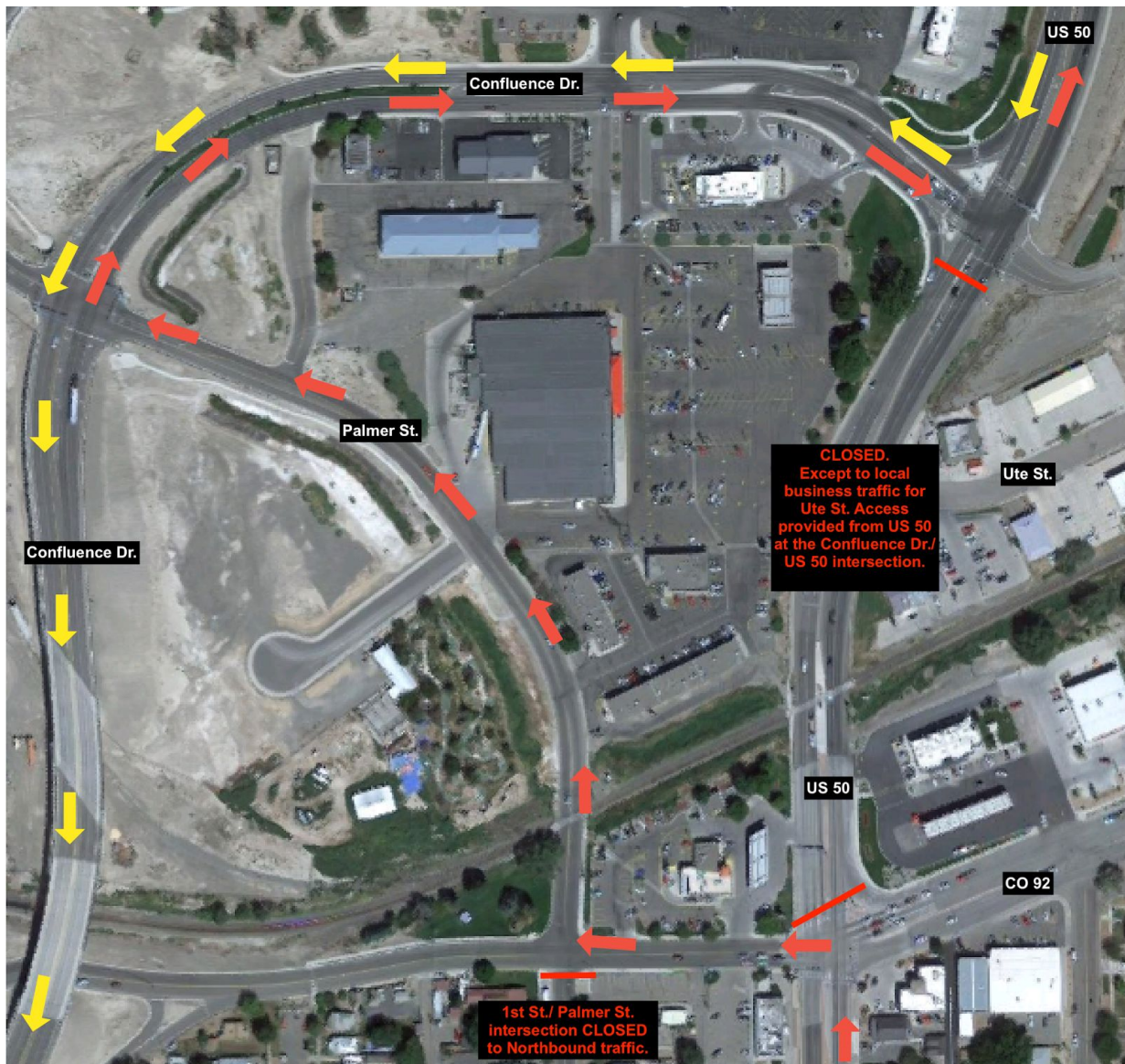
Delta Intersection Project

Ongoing Traffic Impacts

The Delta Intersection Project will be constructed in Delta on US 50 (Main Street) from Confluence Drive to 2nd Street and on CO 92 from Main Street to Grand Avenue.

Work starting on **Monday, Sept. 14 to Thursday, Oct. 8** will consist of:

- **FULL CLOSURE eastbound and westbound on US 50 from the CO 92 and 1st St. intersection to Confluence Dr.**
 - Ute St. is accessible to local traffic
- Eastbound and Westbound US 50 through traffic must use the Confluence Dr. Detour
- Expect intermittent flagging during construction
- All businesses will have at least one public ingress/egress point at all times during construction



The project will be in operation Monday through Friday, 7 a.m. to 7 p.m. As a reminder, there is a 12' width restriction for the duration of the project. For more information or to be added to the project update list please call 970.812.3784 or email DeltaIntersection@gmail.com.

It is important that the contractors and the traveling public stay safe during this project, please be aware and obey all traffic signage and restrictions and maintain social distancing from the work zones.

For information about other CDOT projects the public may log on to CDOT'S traveler information website at www.codot.gov, www.cotrip.org or call 511 from anywhere in the state.

