

WELCOME

Please Sign In



Partnering for Progress

The US 50 Corridor Vision

The corridor vision for US 50 East calls for an improved road, on or near the existing US 50, that maintains safety, reasonable traffic flows and speed for the movement of people and goods.

This vision that your community helped develop in 2003 is shared by the Southeast Transportation Planning Region and Pueblo Area Council of Governments and is included in the CDOT Statewide 2030 Plan.



Building on the Past

The previous planning study considered these regional corridors:

- ✧ North Regional Corridor
- ✧ South Regional Corridor
- ✧ Existing Regional Corridor

With public input, the Existing Regional Corridor, on or near the existing highway, has been carried into this study for further evaluation.



What is the Existing Regional Corridor?

- ★ The map shows the area selected by the public in the previous study.
- ★ This is the area on or near US 50 where improvements are being considered.



Partnering for Progress

What You Told Us

- ★ **Keep improvements on or near the existing US 50**
- ★ **Address safety before adding capacity**
- ★ **Improve the movement of goods and people**
- ★ **Maintain and enhance economic viability**
- ★ **Avoid or minimize impacting prime agricultural lands**
- ★ **Work to complement long-term growth and development**
- ★ **Protect community assets**
- ★ **Provide access at appropriate locations**
- ★ **Ensure destinations are signed clearly**



Partnering for Progress

Where do We Go from Here?

The vision and previous planning decisions, combined with extensive agency and continued community outreach, will result in the identification of a general location for US 50 north, through, or south of your community.



What will this Study Achieve?

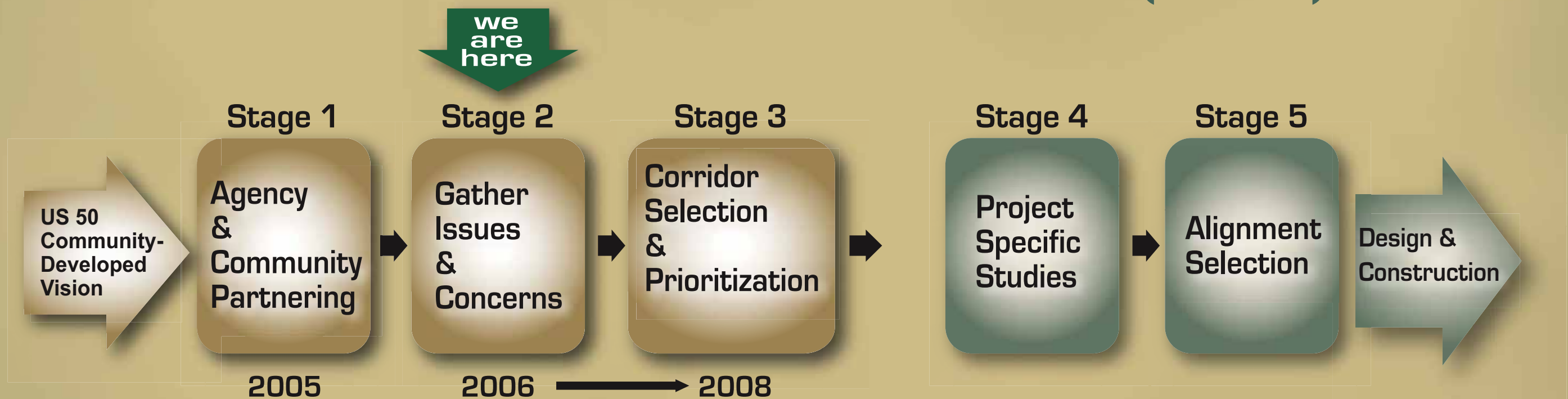
- ★ **A general location, in which specific transportation improvements will be developed that balance community and agency needs**
- ★ **Access Management Plan**
- ★ **Corridor Preservation Plan**
- ★ **Prioritization Plan for further action**
- ★ **A plan for improvements to US 50**



Process and Schedule

**General Location
(TIER 1)**

**Specific Location
and Impacts
(TIER 2)**



Partnering for Progress

Partnering for Progress

The following partners, together with YOU, the public, are now involved in the process:

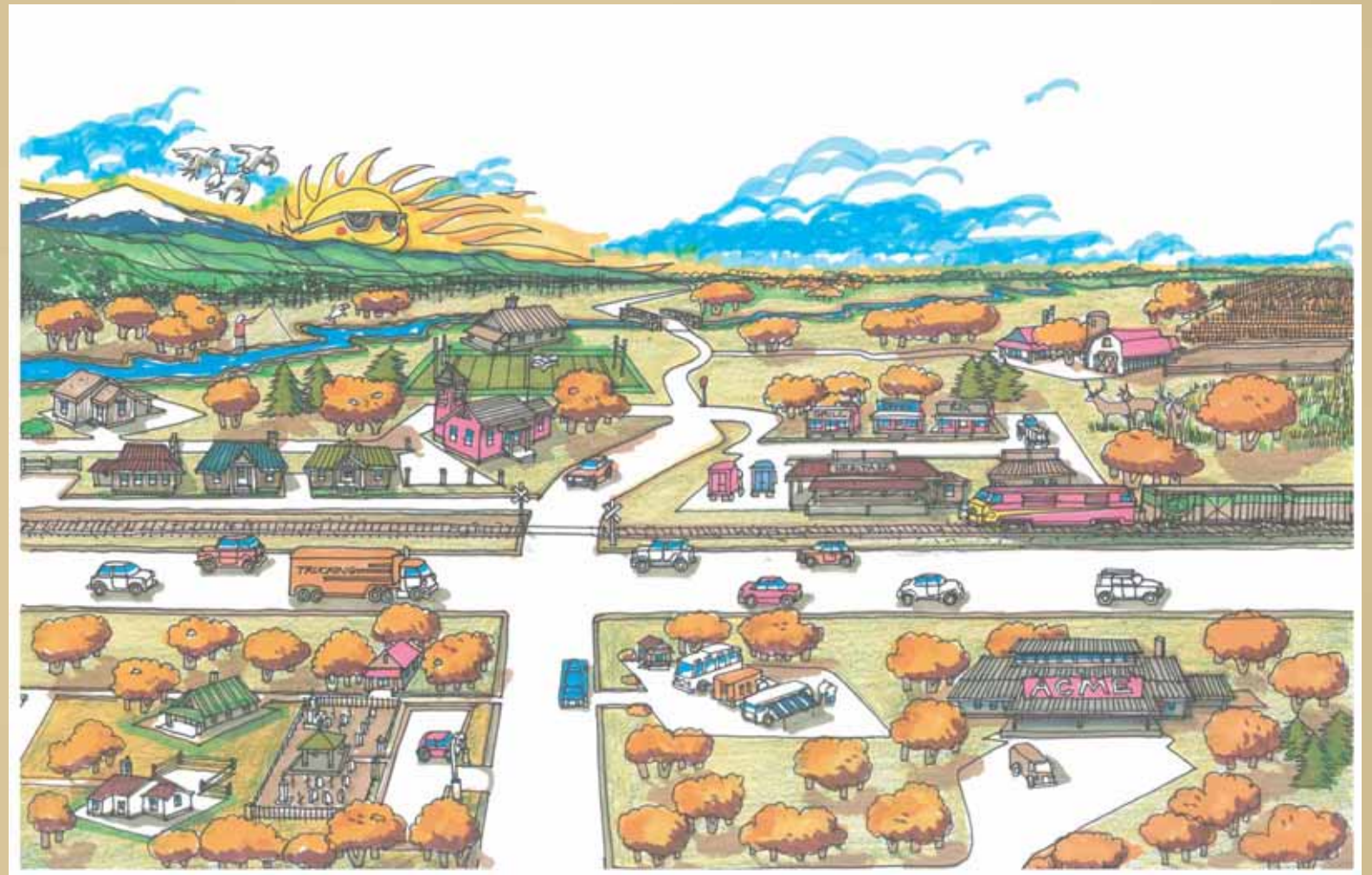
- ★ Colorado Department of Transportation
- ★ Federal Highway Administration
- ★ Bent County
- ★ Otero County
- ★ Prowers County
- ★ Pueblo County
- ★ La Junta
- ★ Lamar
- ★ Las Animas
- ★ Pueblo
- ★ Rocky Ford
- ★ Fowler
- ★ Granada
- ★ Holly
- ★ Manzanola
- ★ Swink
- ★ Action 22
- ★ Bureau of Land Management
- ★ Natural Resources Conservation Service
- ★ US Army Corps of Engineers
- ★ US Environmental Protection Agency
- ★ US Fish and Wildlife Service
- ★ US Forest Service
- ★ Colorado Department of Local Affairs
- ★ Colorado Division of Wildlife
- ★ Colorado State Historic Preservation Office
- ★ Colorado State Land Board
- ★ Colorado State Parks



What will this Study Evaluate?

This study will evaluate general locations for improvements to US 50 based on:

- ★ transportation needs
- ★ social impacts
- ★ economic impacts
- ★ environmental impacts



Partnering for Progress

What Topics will be Included in this Study?

- ★ Farmlands
- ★ Historic Resources
- ★ Local Economics
- ★ Social Considerations
- ★ Traffic Noise
- ★ Water Quality
- ★ Wetlands & Riparian
- ★ Aesthetics
- ★ Air Quality
- ★ Archeology & Paleontology
- ★ Floodplains & Drainage
- ★ Parks & Public Lands
- ★ Wildlife & Vegetation
- ★ Land Use
- ★ Right-of-Way
- ★ Long-Term Regional Effects
- ★ Hazardous Materials



Please Tell Us

- ★ **Your comments about specific topics.**
- ★ **How this topic is important to the future general location of US 50.**
- ★ **Where information can be found about this topic.**
- ★ **About individuals with specific knowledge of this topic.**

Please use the comment sheet.



Partnering for Progress

What We Need from You

Your issues, concerns and comments help guide the decision-making process. To ensure your voice is heard, please complete a comment sheet.



Partnering for Progress

How will Earmarked Transportation Dollars be Applied to US 50?

Approximately \$22 million in earmarked funds are available from the recently passed Federal transportation bill for improvements to US 50. However, Federal environmental requirements must be met before improvements can be made.

CDOT will evaluate opportunities to accelerate the existing safety and maintenance programs on US 50.



STAY INFORMED...

- ★ **Open Houses**
- ★ **Newspaper, Television,
and Radio Announcements**
- ★ **Newsletters**
- ★ **Web Site**
- ★ **Fliers**
- ★ **Community Workshops**
- ★ **Advertisements**



Partnering for Progress

STAY INVOLVED

Contact information:

Phone: 1-866-G050NOW (866-465-0669)

**Address: 455 E. Pikes Peak Avenue
Suite #200**

Colorado Springs, CO 80903

E-mail: us50einfo@wilsonco.com

Web site: www.us50east.com



Partnering for Progress