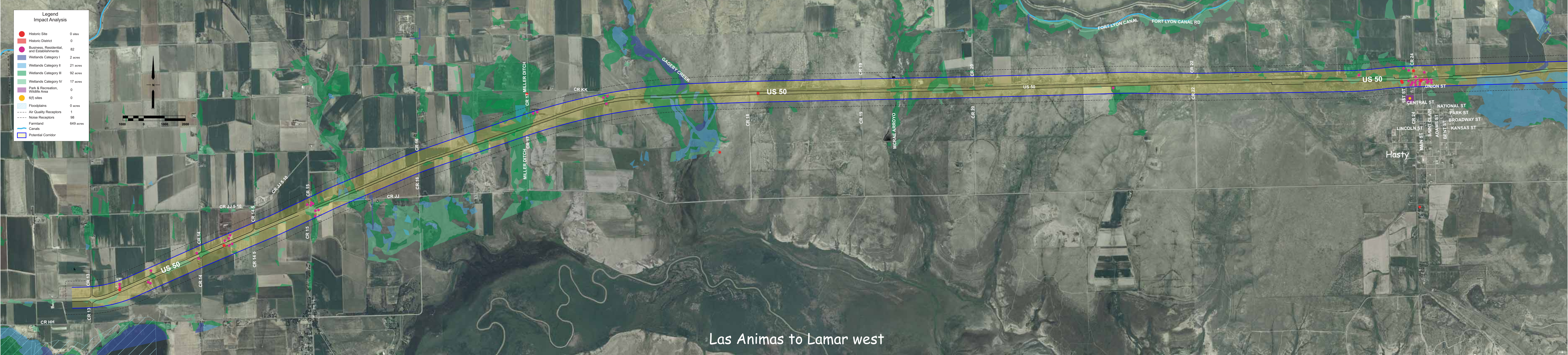


**Legend**  
**Impact Analysis**

- Historic Site 0 sites
- Historic District 0
- Business, Residential, and Establishments 82
- Wetlands Category I 2 acres
- Wetlands Category II 21 acres
- Wetlands Category III 92 acres
- Wetlands Category IV 17 acres
- Park & Recreation, Wildlife Area 0
- 6(f) sites 0
- ▨ Floodplains 0 acres
- Air Quality Receptors 1
- Noise Receptors 98
- Farmland 649 acres
- ▬ Canals
- ▭ Potential Corridor



Las Animas to Lamar west