



September 2019

YOU ARE INVITED – PUBLIC OPEN HOUSE

Please attend to learn more about the Southern Mountain Loop Highway 12 Planning and Environmental Linkages Study and provide feedback.

Date: Wednesday, Sept. 18
Time: 5:30 - 7:30 p.m.
Location: Trinidad State College
Pioneer Room (located on the south end of the Sullivan Center building)
600 Prospect Street, Trinidad, CO 81082

For special ADA accommodations to participate, please call 719/488-5908 and if you require Spanish language translation to participate in this meeting, call 303-578-2505 at least 48 hours in advance.

For more information email: SouthernMountainLoop@gmail.com

SCHEDULE

Existing conditions assessment - Completed by Late Summer 2019

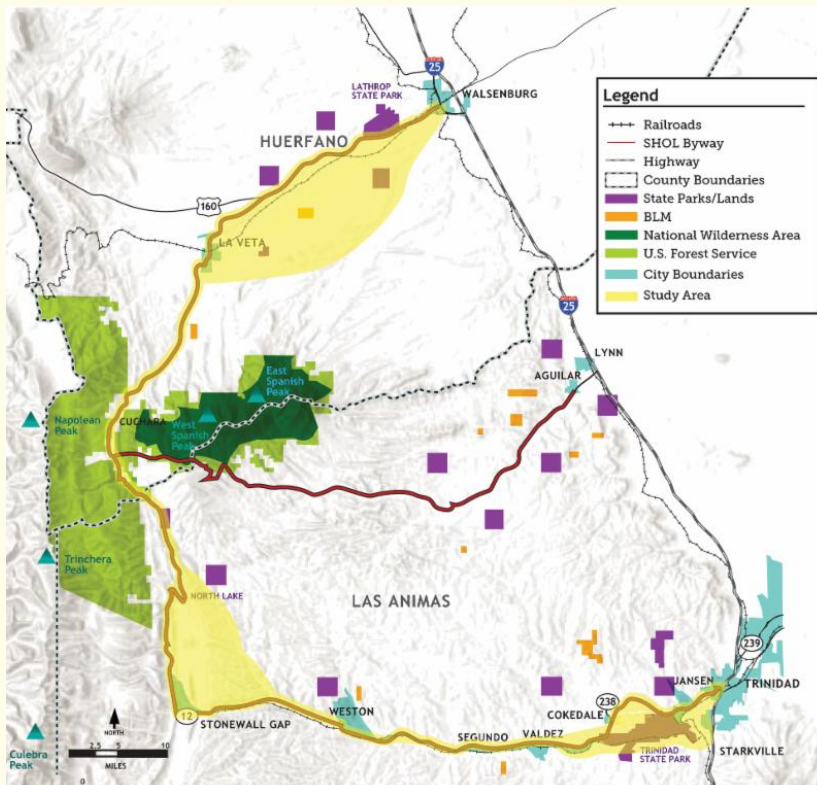
Alternative analysis - July 2019 through Summer 2020

Information booth: La Veta Oktoberfest Saturday, Oct. 5, 10 a.m. - 6 p.m.
La Veta Town Park La Veta, CO 81055

FOLLOW THE PROJECT - SIGN-UP FOR SML PEL STUDY ENEWSLETTER

Send an email to SouthernMountainLoop@gmail.com and request to be added to the e-newsletter distribution list.

UNDERSTANDING THE STUDY AREA



PURPOSE OF THE STUDY

The purpose of the PEL study is to enhance the region's economy through a long-term investment plan for highway safety, bicycle/multi-use trail, cultural, and ecotourism infrastructure improvements along the Scenic Highway of Legends. Completing the Southern Mountain Loop segment of the Colorado Front Range Trail, the goal is to balance the protection and promotion of the Spanish Peaks Country according to local community values and goals.

Integrated transportation-related improvements are needed to address:

- **Safety** - Existing roadway alignments and substandard shoulder widths, combined with higher bicycle usage and localized pedestrian areas, create potentially unsafe conditions for vehicles, bicyclists, and pedestrians along the corridor.
- **Regional and Local Bicycle/Multi-Use Trail System** - The ability for bicyclists, pedestrians, and other users, both regional and local, to move through and within the corridor is needed.
- **Connections and Access to Recreational Facilities** -

Centered along the corridor, extending from Walsenburg to Trinidad, the Study Area encompasses the Scenic Highway of Legends (SHOL) and the range of alternative off-highway bicycle/trail routes including parallel and adjacent county roads and the Iowa Pacific and abandoned Elk Mine railroads. The Study Area is located in Huerfano County and Las Animas County. Features include the towns or communities of: Cuchara, La Veta, Segunda, Stonewall, Trinidad, Walsenburg and Weston.

Highway, bicycle, and pedestrian connections between local activity centers, recreational facilities, and byway-related amenities are needed to improve community interactions and access to a range of activity types.

PLANNING AND ENVIRONMENTAL LINKAGES (PEL) STUDY PROCESS

A PEL is defined as "an approach to transportation decision-making that considers environmental, community, and economic goals early in the planning stage to set the stage for subsequent more detailed project development, design, and construction." The PEL process is intended to lead to better decision-making and reduce the duplication of efforts in subsequent planning, development, and implementation of projects, including securing funding.



The PEL study works with the public and community stakeholders to identify the various transportation deficiencies and needs along the Southern Mountain Loop (SML) corridor. The focus of this step is to understand the desires and values of communities along the corridor, how the transportation system currently functions, how it impacts

communities, and how it can be improved now and in the future. Once these are identified, a series of alternatives are developed to address the needs. The ability of these alternatives to meet project needs will be evaluated and considered, along with the effects on the communities and environment.

Some of the considerations:

- Are there locations with numerous vehicular crashes?
- Are there recurring types of vehicular crashes or patterns of crashes?
- What are other safety concerns along the corridor?
- What kind of highway improvements would address the safety concerns?
- What is the best location and configuration for a regional bicyclists/pedestrians trail, either along the highway or on a separate alignment?
- How might a trail system better connect communities and provide access to recreational areas along the corridor?
- How would byway-related improvements, such as cultural or scenic pull-offs, provide new attractions for visitors and connect with the trail improvements?

After the PEL study is complete, CDOT and the local agency SCCOG will have a documented set of projects and an implementation plan, which they will use to identify funding for project design and implementation.

COORDINATION WITH OTHER AREA STUDIES

[Colorado Front Range Trail \(CFRT\) Master Plan](#)

[Huerfano County Trails Master Plan 2011](#)

[Byways \(SHOL\) Master Plan](#)

[South Central Regional Transportation Plan](#)

[Statewide Bicycle and Pedestrian Plan](#)

[City of Trinidad Comprehensive Plan - 2017](#)

SCENIC HIGHWAY OF LEGENDS BYWAY INFORMATION

[Colorado Department of Transportation](#)

[Spanish Peaks Country](#)

To safely UNSUBSCRIBE from this project e-newsletter only, send an email to [Lisa@bachman pr.com](mailto:Lisa@bachmanpr.com)

This removes you from receiving information about this project only, but assures you continue to receive e-newsletters about other projects you signed up for in the past. SafeUnsubscribe below removes you from receiving ALL project e-newsletters.

South Central Council of Governments, (719) 845-1133,
300 S. Bonventure Avenue, Trinidad, CO 81082

SafeUnsubscribe™ {recipient's email}

[Forward this email](#) | [Update Profile](#) | [About our service provider](#)

Sent by lisa@bachmanpr.com in collaboration with

Constant Contact

Try email marketing for free today!