

Southern Mountain Loop Planning and Environmental Linkages (PEL) Study

Stakeholder/Technical Committee Meeting No. 3



COLORADO
Department of
Transportation



April 9, 2020

Agenda



- **Introductions**
- **Goals of Meeting**
 - Status of Study
 - Summary of Recent Activities
- **Alternatives Information**
 - Highway Safety Improvements
 - Trail Alternatives
 - Scenic Highway of Legends Byway Features
- **Evaluation of Alternatives - Findings**
- **Study Recommendations (Next Steps)**
- **Upcoming Events and Summary of Actions**



Status of Study and Progress



Public Involvement Activities	2019												2020								
	Feb	March	April	May	June	July	Aug	Sep	Oct	Nov	Dec	Jan	Feb	March	April	May	June	July	Aug		
Steering Committee Mtgs					●			●									●		●		
General Public - Coordination and Open Houses								●											●		
Technical Committee Meetings				●				●											●		
Stakeholder Committee Meetings					●			●											●		
Landowner Workshops/Meetings																					
Official Briefings (Materials)																					
General Communications (Media/Website/Newsletters)																					

Steering and Stakeholder Committee Meetings

- No. 1 (June 2019) – Study Introduction and Goals
- No. 2 (September 2019) – Preliminary Alternatives and Trail Guidelines
- No. 3 (Today) – Recommended Alternatives
- No. 4 (June 2020) – Implementation Recommendations

Summary of PI Activities



- Dec/Jan – eNewsletter (Level 1 Findings)
- Dec – Fact Sheet (Level 1 Findings)
- Jan – Social Media (Coffee Chats)
- Jan – Press Release
- Jan 14th to 16th – Coffee Chats
- Early 2020 – Website updates
- Late 2019/Early 2020 – Property Owner Discussions



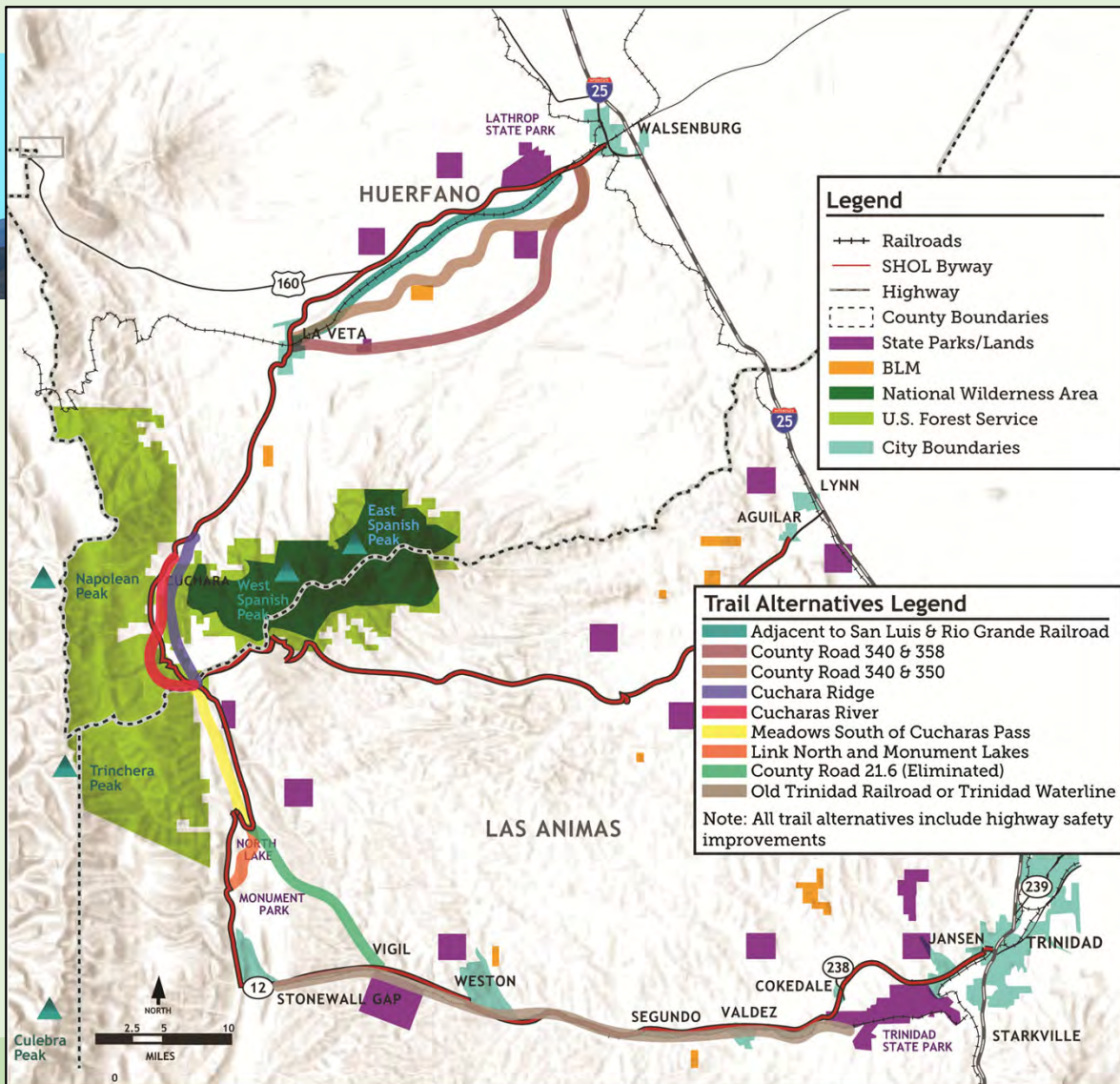


Preliminary Alternatives

- Committee workshops
- All trail alternatives include highway safety improvements

Level 1 Screening

- Based on Purpose and Need
- Alt P1 (No-Build Alternative) was carried forward for comparison purposes
- Alt P2 (Highway Safety Improvements) was eliminated as standalone alternative
- County Road 21.6 was eliminated



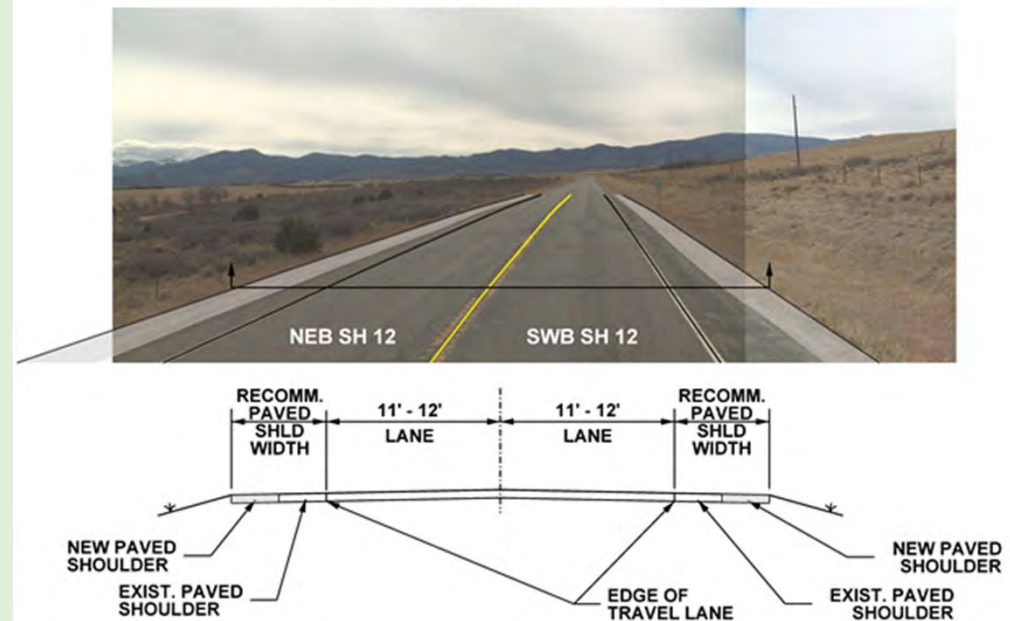
Highway Safety Improvements



Roadway Safety Improvements

- Wildlife Crossings – 4 Locations
- Lane Departure Crashes
 - Shoulder Widening
 - Roadway Configuration – North Lake, Vigil and Segundo
- Transition Zones (Rear-end Crashes)
 - Walsenburg (RR Crossing)
 - Jansen
 - Santa Fe/Main St Intersection (Trinidad)
- Bicycle Safety – Signage and Pavement Markings
- Pedestrian Safety
 - La Veta
 - Cuchara
 - Stonewall

US 160 / SH 12 TYPICAL SECTION
WALSENBURG TO LA VETA
Location Near MP 2 Shown
(see table for shoulder dimensions)



Vista – Roadway Safety Improvements



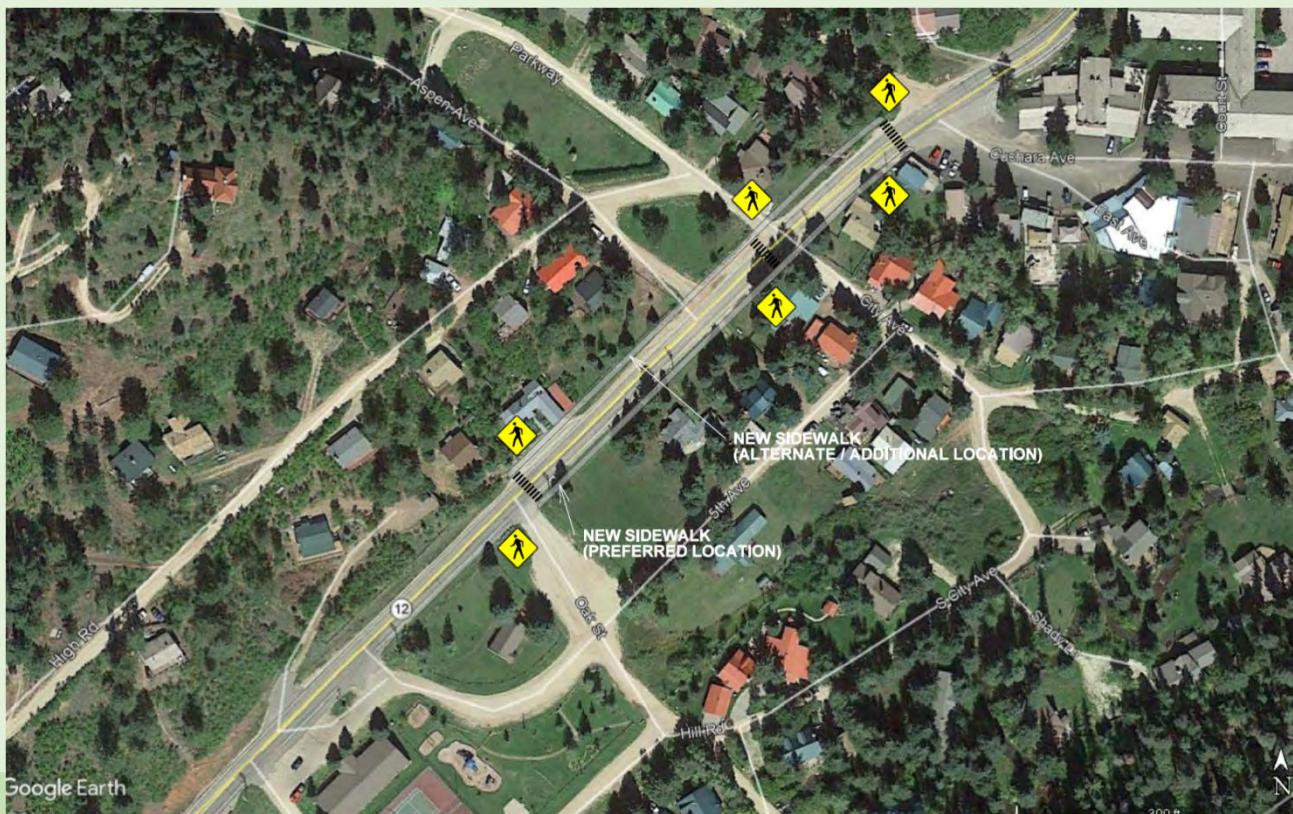
US 160
RR Crossing

Alpine – Roadway Safety Improvements



La Veta Pedestrian Crossings

Alpine – Roadway Safety Improvements



Cuchara Pedestrian Improvements

Alpine – Roadway Safety Improvements



North Lake SE Curve Improvements

Alpine – Roadway Safety Improvements

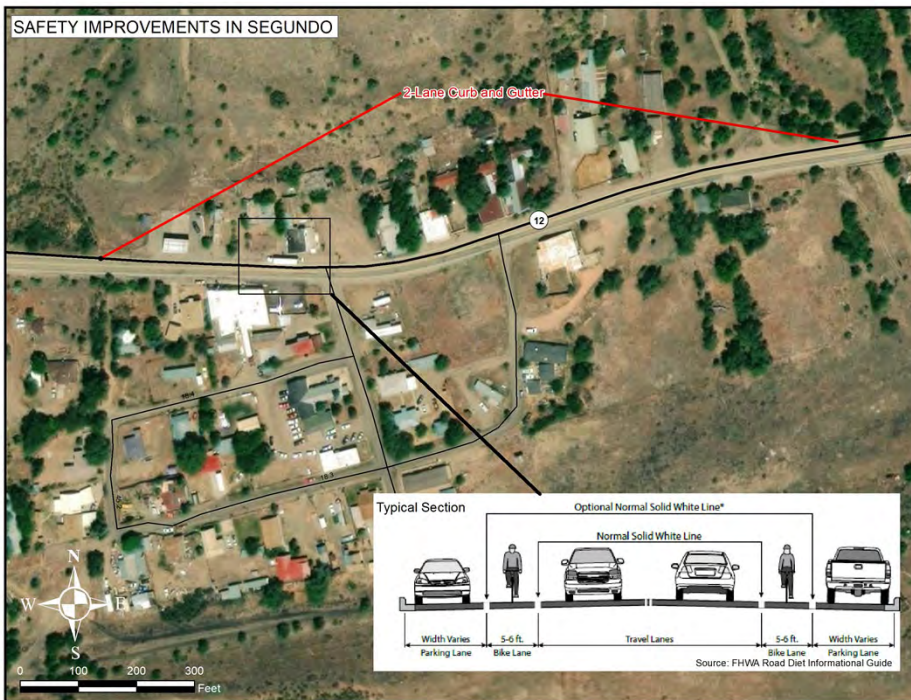


Stonewall Pedestrian Improvements

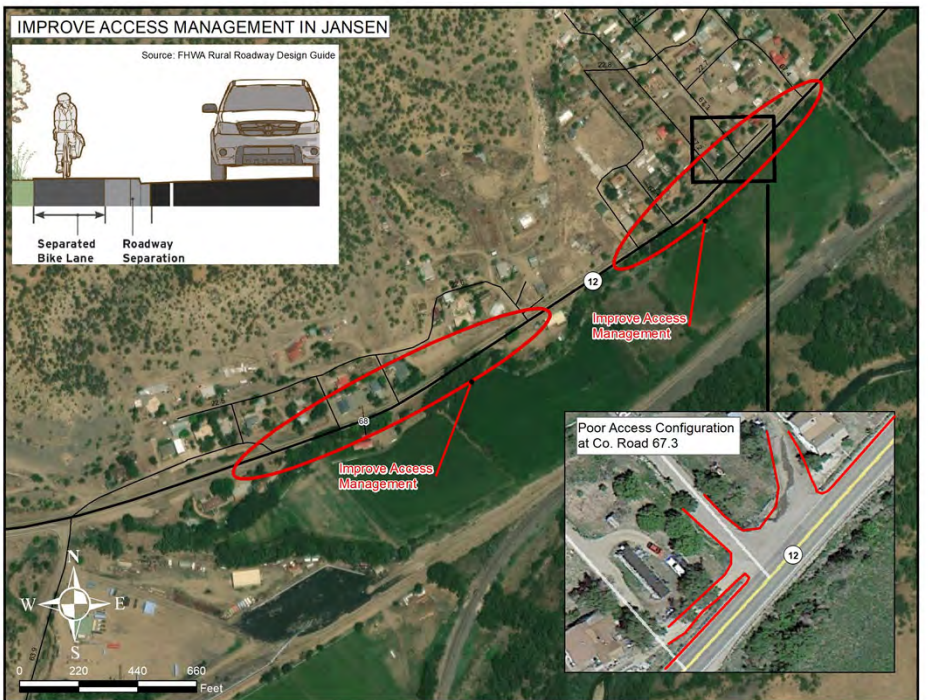
Mining – Roadway Safety Improvements



SAFETY IMPROVEMENTS IN SEGUNDO



IMPROVE ACCESS MANAGEMENT IN JANSEN



Mining – Roadway Safety Improvements



SAFETY IMPROVEMENT: ROUNDABOUT AT SANTA FE AND MAIN ST

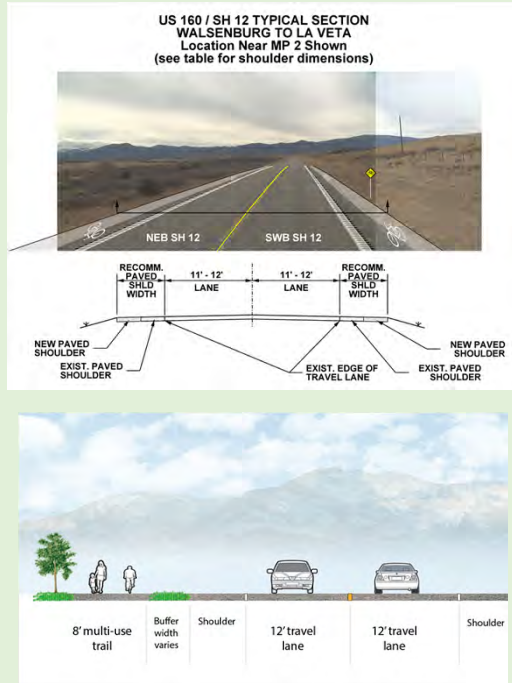


Trinidad: Santa Fe and Main Street Intersection

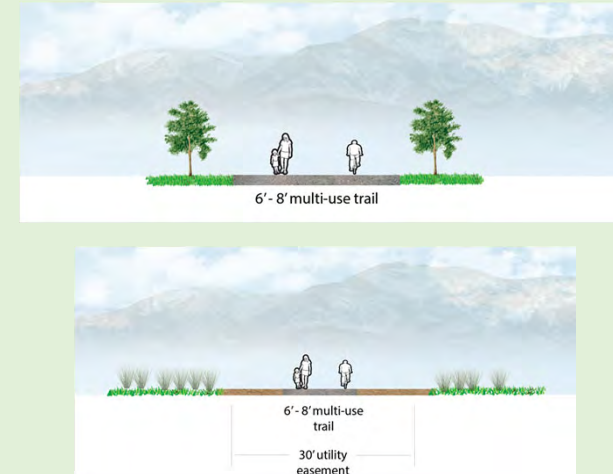
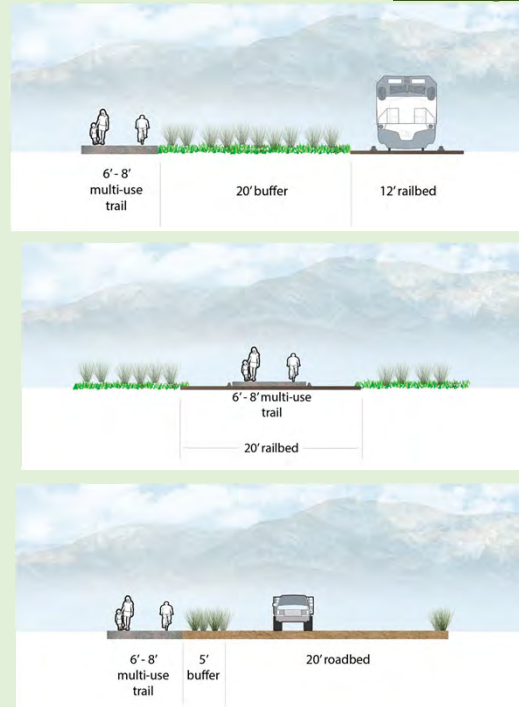
Trail Alternatives



On-highway Trail Improvements

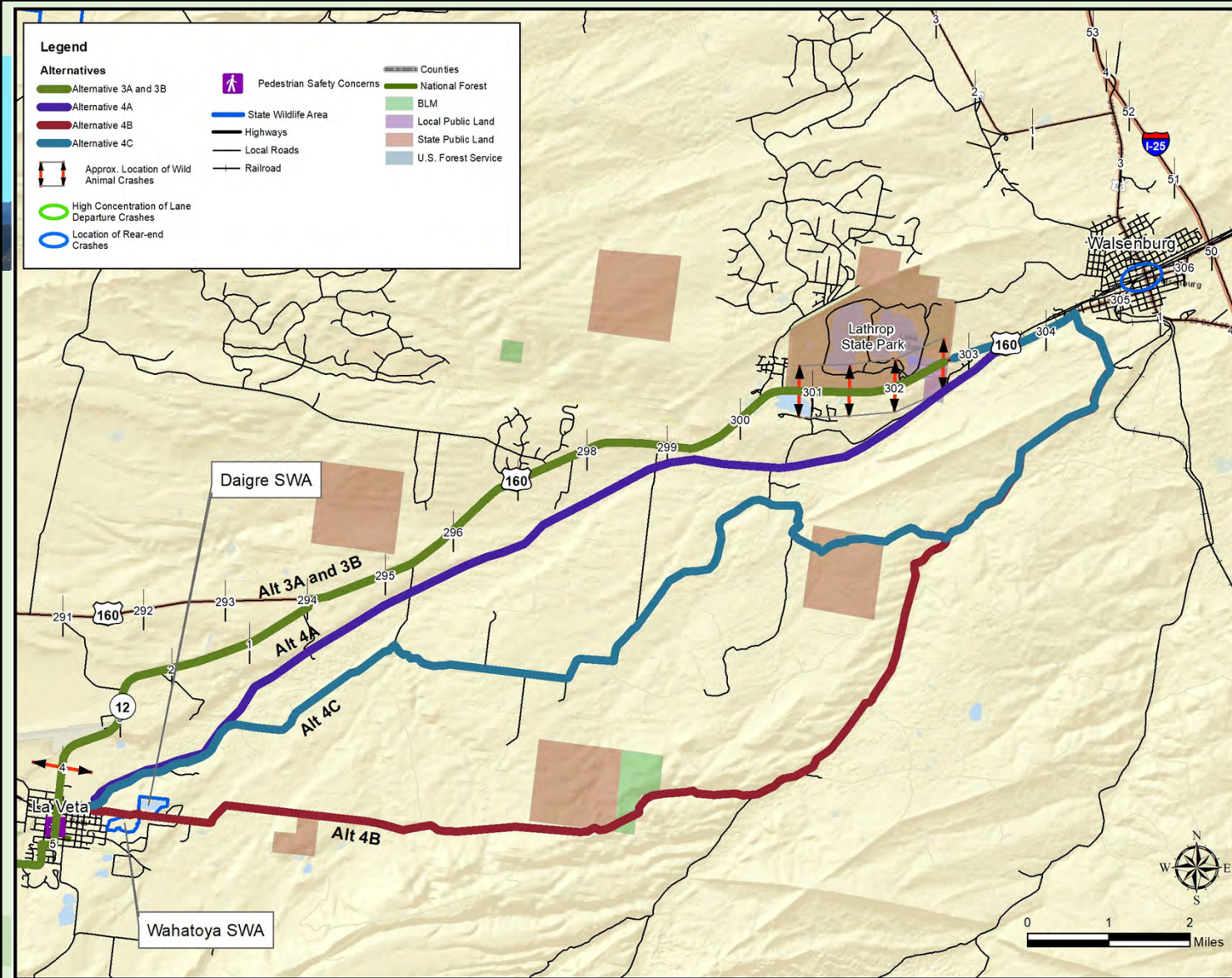


Off-highway Trail Improvements

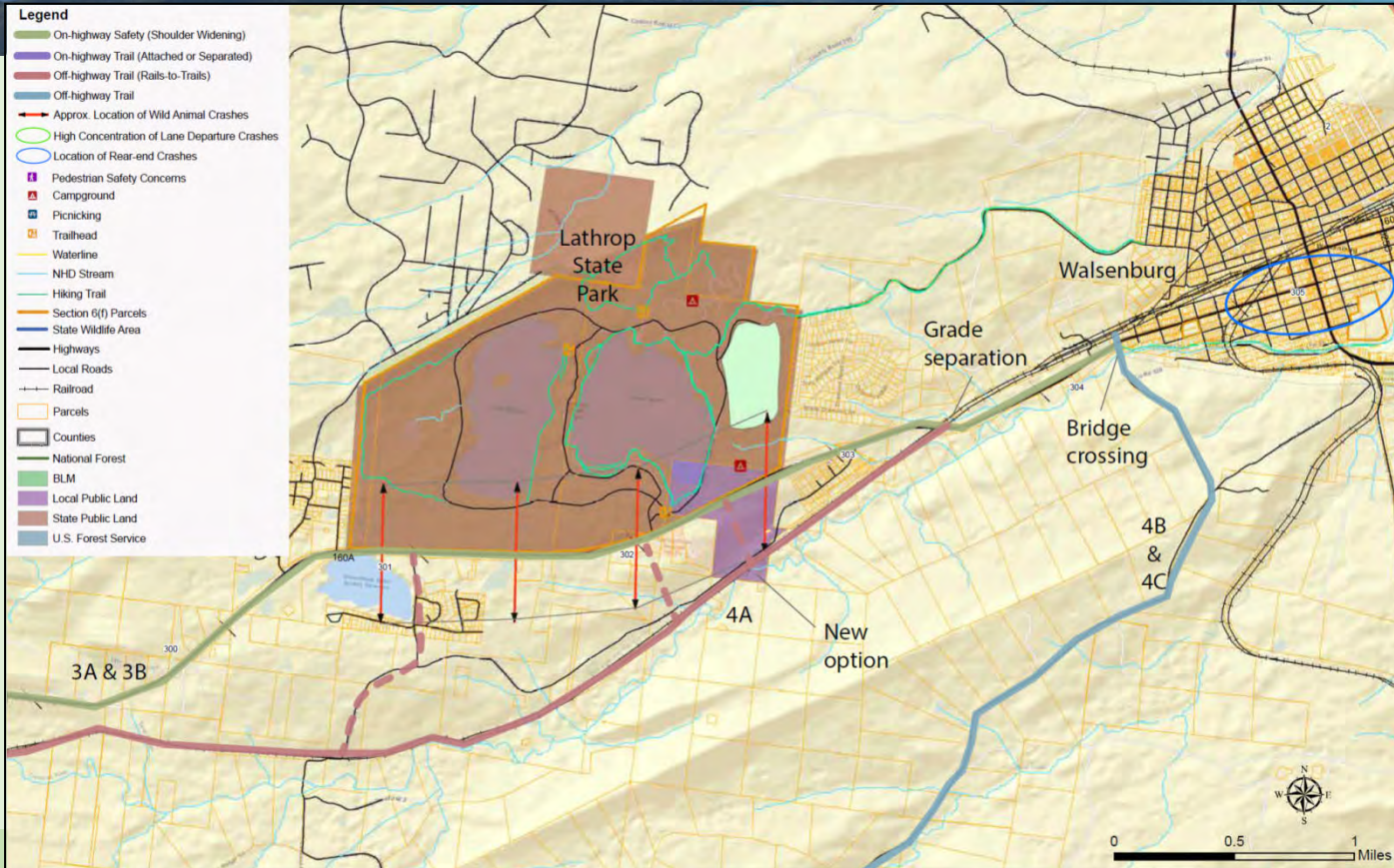




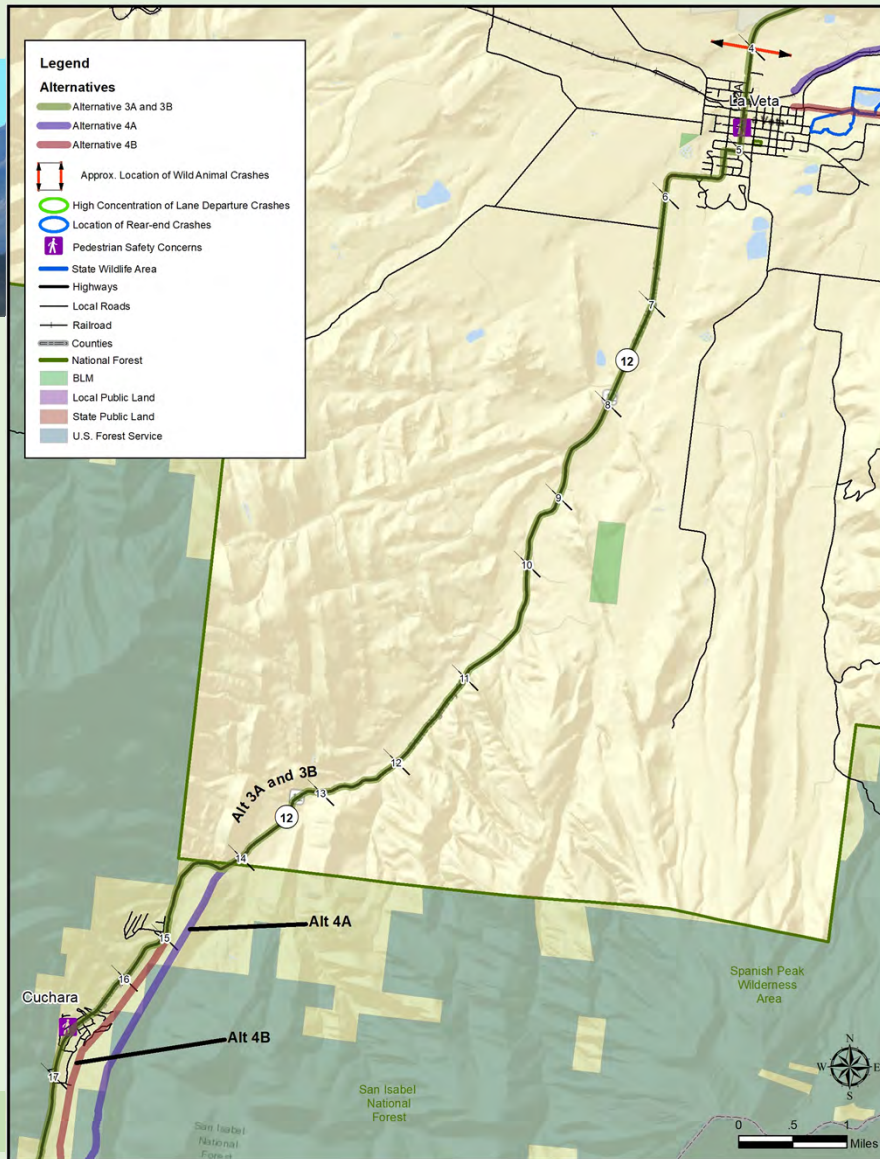
Vista – Level 2 Alternatives



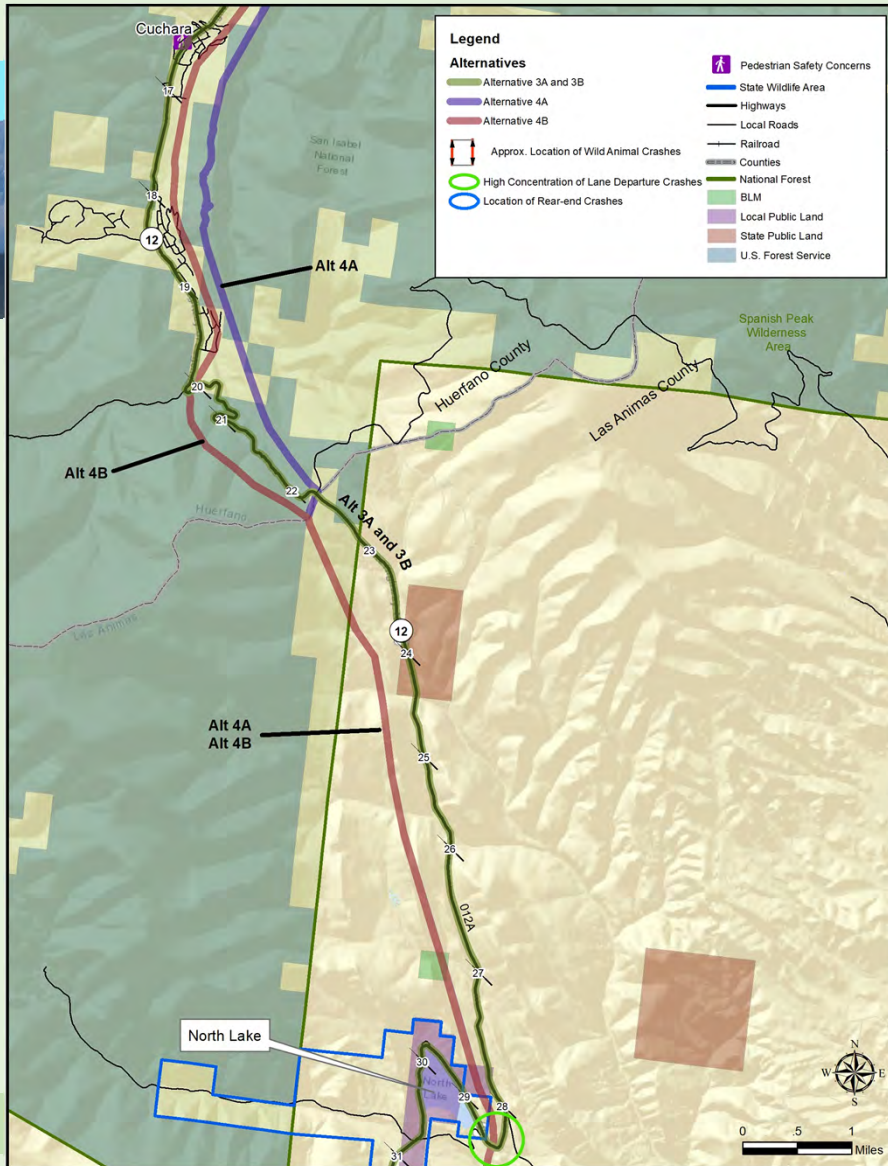
Vista – Trail Alternatives



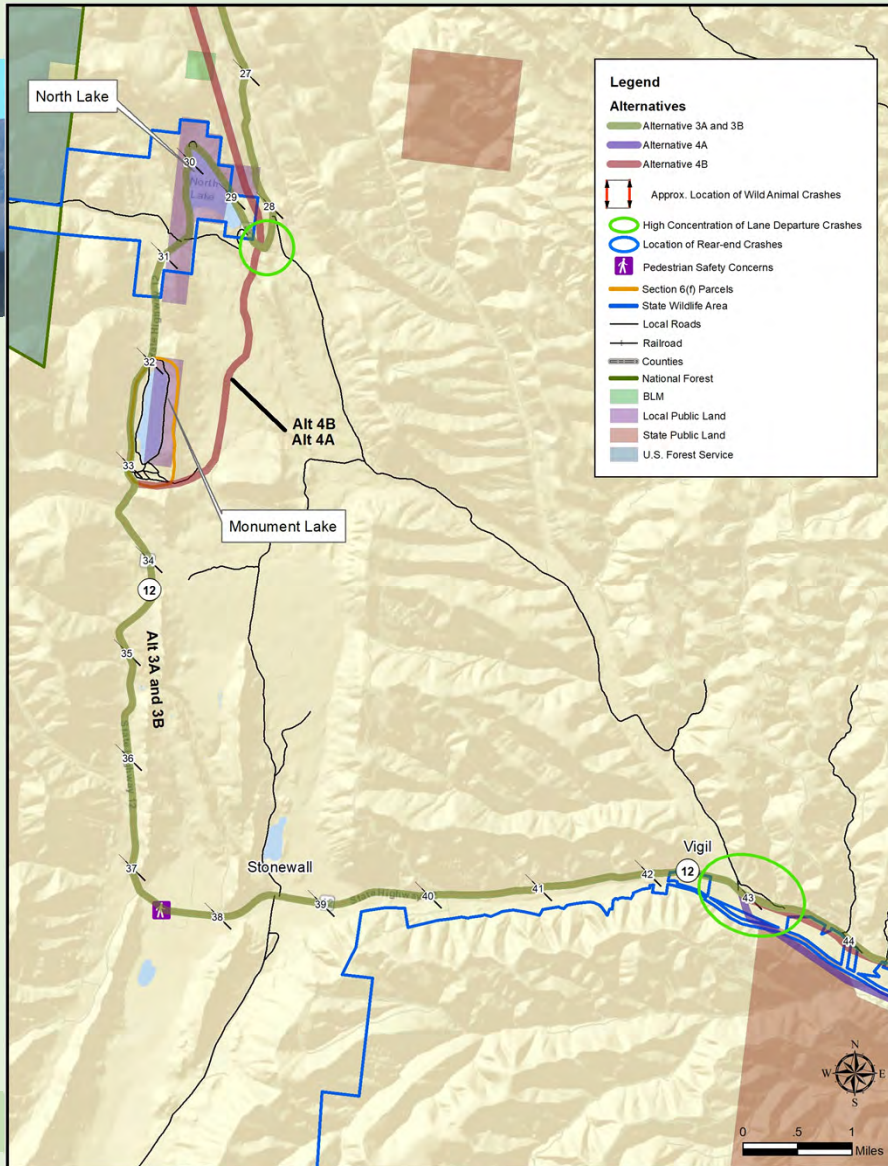
Lathrop State Park



Alpine – Level 2 Alternatives (Sheet 1 of 3)

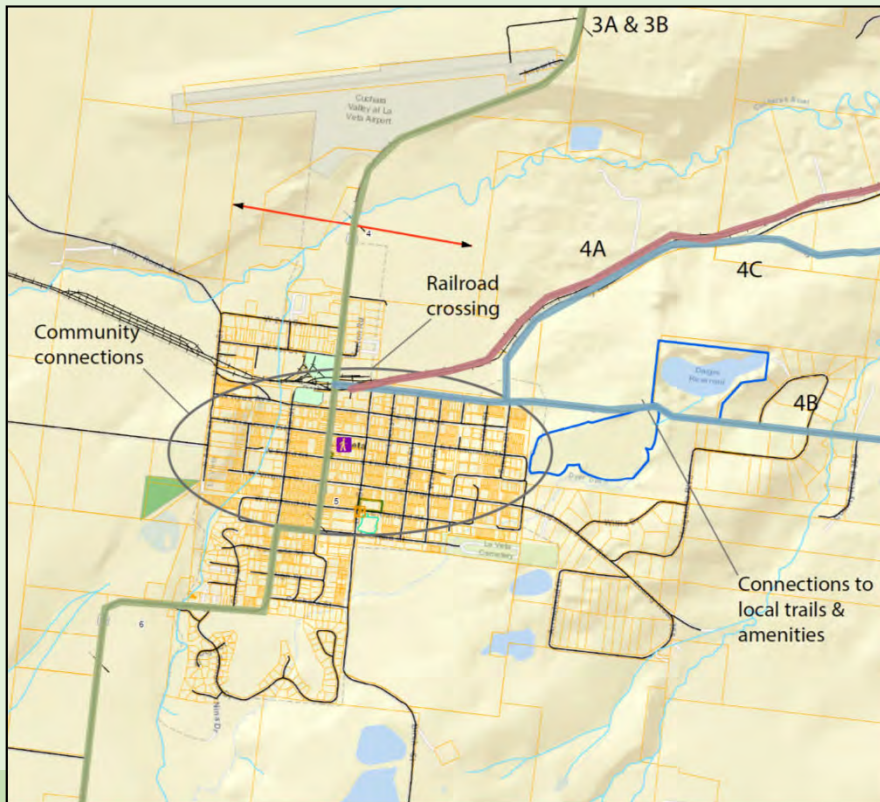


Alpine – Level 2 Alternatives (Sheet 2 of 3)



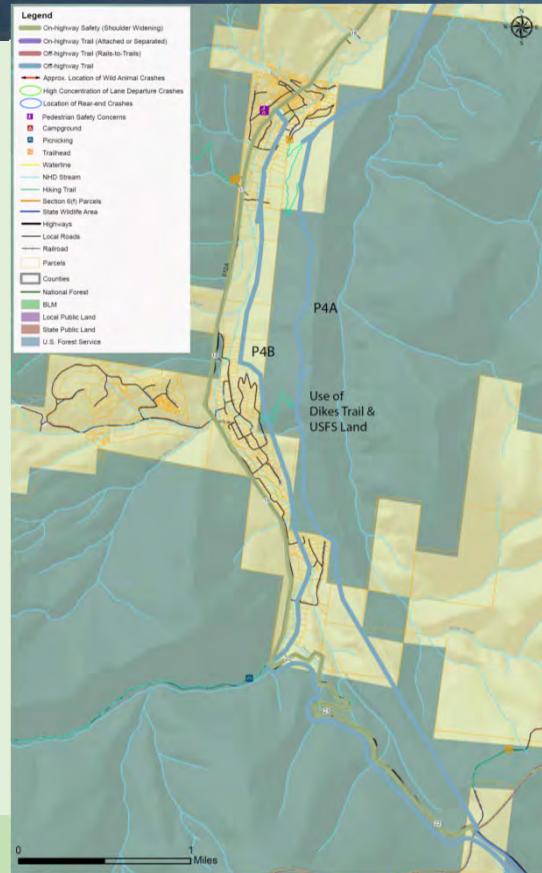
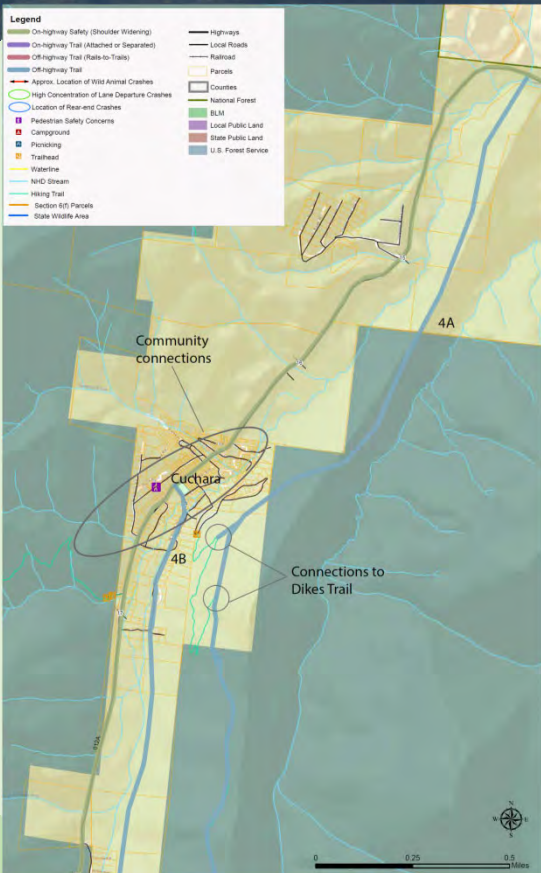
Alpine – Level 2 Alternatives (Sheet 3 of 3)

Alpine – Trail Alternatives



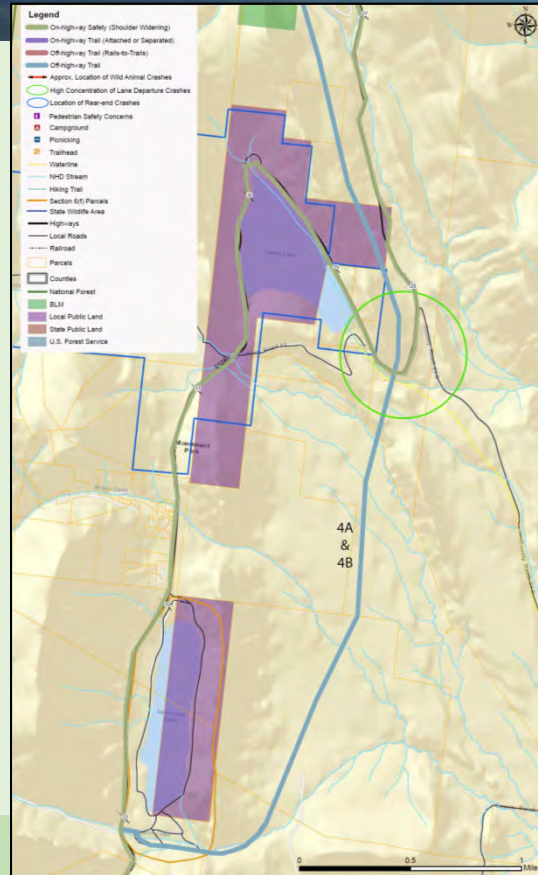
La Veta
Area

Alpine – Trail Alternatives



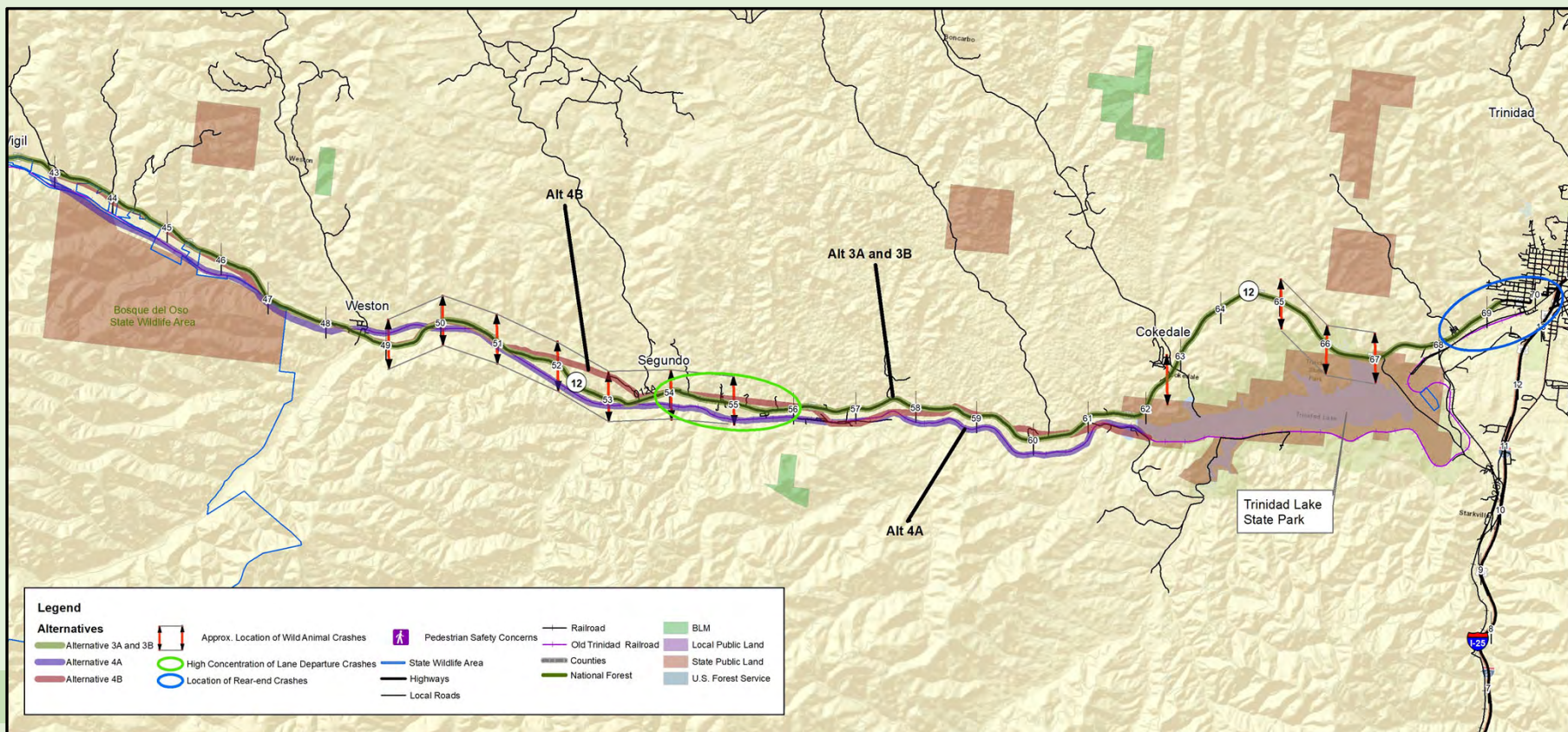
Cuchara Area

Alpine – Trail Alternatives

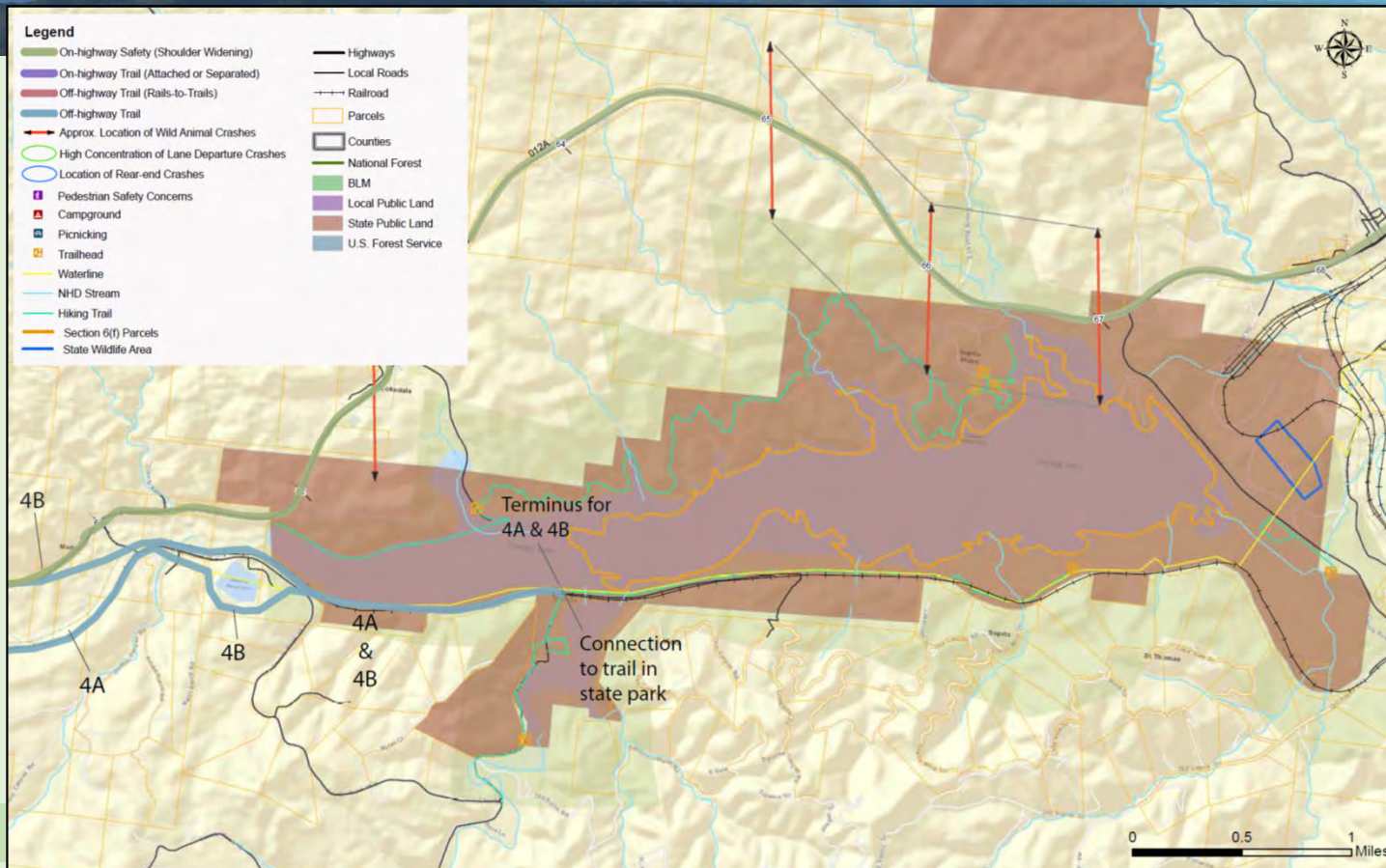


**North Lake and
Monument
Lake
Trail Link**

Mining – Level 2 Alternatives



Mining – Trail Alternatives



Trinidad Lake
State Park

SHOL Byway – Improvements/Features



- **SHOL Renewed Vision**

“Corridor of opportunities to traverse a National Forest (and National Natural Landmark) that offers outdoor recreation against a backdrop of stunning one-of-a-kind geologic features.”

- **Federal Byway Designation**

- **Amenities Plan:**

- Geology
- History/Community
- Scenic Pull-offs
- Gateways

Geology

- Spanish Peaks - Vistas
- Radial Dikes/Formations – Pull-offs
 - Profile Rock (New)
 - Devil’s Staircase (Improved)
 - Dakota Wall (Stonewall Visitor Center)
- K-P Boundary – Trinidad Lake SP
- Coal Mining Geology – Cokedale Museum

Scenic Pull-offs

- US 160/CR 450 (Out of Study Area)
- Cucharas Pass
- North Lake
- Monument Lake (Incorporate into Park)
- Mining Town (TBD)

History/Community

- La Veta – Francisco Fort Museum
- Cuchara
- Stonewall – New Visitor Center
- Cokedale – Mining Museum/Coke Ovens

Gateways

- Walsenburg
 - Lathrop State Park
- La Veta
- Trinidad
 - Colorado State Welcome Center
 - Trinidad Lake State Park

SHOL Byway Projects



Site	Feature	Location and Description
Vista – Walsenburg to La Veta		
1	Trailhead	Lathrop State Park (Main Entrance) – Byway and CFRT maps and information
2	Wayside Park	US 160/CR 450 – Improve existing kiosk, add picnic tables with shade and prefab toilet
3	Scenic Pull-off	MP 3.2 (approx.) – Improve existing pull-off for safety; add parking and three-panel kiosk
Alpine – La Veta to Vigil		
4	Visitor Center	La Veta (Between Library/Museum) – Replace existing interpretive signage; install bike self-repair station
5	Scenic Pull-off	Profile Rock (MP 8.7 approx.) – new pull-off for views of geologic features
6	Scenic Pull-off	Devil’s Staircase (MP 11.0 approx.) – improve existing pull-off with parking and new signage
7	Visitor Center	Cuchara – History of community and area; signage and restroom
8	Trailhead	Blue/Bear Lake Trailhead (Existing) – Add signage for SHOL and geology
9	Scenic Pull-off	Cucharas Pass – Add wayfinding signage and regional USFS information
10	Scenic Pull-off	North Lake (MP 29 approx.) – Refresh and improve existing kiosk; 3 new panels
11	Scenic Pull-off	Monument Lake (MP 33.0 approx.) – Add signage and public access to Park facilities
12	Visitor Center	Stonewall - Add Geological Education Center, restrooms, picnic area, and parking
Mining – Vigil to Trinidad		
13	Historic Markers	Weston/Segundo – Add historic markers (coalmining, Native American history)
14	Visitor Center	Cokedale – Expand museum with better directional signage from SHOL
15	Trailhead	Trinidad Lake State Park (Main Entrance) – Byway and CFRT maps and information
16	Rest Area	I-25 El Moro Rest Area (Existing) – Add SHOL and CFRT information and maps

Alternatives Level 2 Evaluation



- Level 2 Evaluation – P&N, Environmental Impacts, Feasibility and Other
- Range of Alternatives (From Level 1 Screening)
 - No-Build
 - On-highway Trail (Attached or Separated)
 - Off-highway Trail
- Trail Alternatives Include Highway Safety Improvements
- Evaluation by Segment – Vista, Alpine and Mining
- Comparative Analysis Based on Benefits and Impact

Findings

RECOMMENDED – Alternative will advance into more detailed study after the PEL Study

NOT RECOMMENDED – Alternative will not advance into more detailed study

Level 2 Screening Summary



Level 2 Screening Recommended Alternative (1) (2)	Concepts					Description
	No-Build	Highway Safety	On-Hwy Trail (Attached)	On-Hwy Trail (Separated)	Off-Hwy Trail	
Vista - Walsenburg to La Veta						
Alt 3A - On-Highway Trail (Attached)		✓	✓			Trail along highway shoulders
Alt 3B - On-Highway Trail (Separated)		✓		✓		Trail within CDOT right-of-way
Alt 4A - Off-Highway Trail (Rails-w-Trails)		✓			✓	Trail along SLRG Railroad
Alpine - La Veta to Vigil						
Alt 3A - On-Highway Trail (Attached)		✓	✓			Trail along highway shoulders
Alt 3B - On-Highway Trail (Separated)		✓		✓		Trail within CDOT right-of-way
Alt 4A - Off-Highway Trail (R-M-LL)		✓	✓	✓	✓	Trail along R-M-LL options
Alt 4B - Off-Highway Trail (BBL-LL)		✓	✓	✓	✓	Trail along BBL-LL options
Mining - Vigil to Trinidad						
Alt 3A - On-Highway Trail (Attached)		✓	✓			Trail along highway shoulders
Alt 3B - On-Highway Trail (Separated)		✓		✓		Trail within CDOT right-of-way
Alt 4A - Off-Highway Trail (Rails-to-Trails)		✓			✓	Trail along Old Trinidad Railroad

Note: (1) No-Build Alternative carried forward for comparison purposes
 (2) All trail alternatives include Highway Safety Improvements

Study Recommendations – Next Steps



Implementation Plan

- Roadmap for Next Steps
- Repackaging Alternatives – Discreet/Independent Projects
- Next Steps – Based on Funding and Priorities
 - More Detailed Study of Trail Alternatives (NEPA, Alternatives Analysis, Permitting)
 - Highway Safety Improvements Can Advance Independently (Not Preclude Trail)
 - Byway Improvements Can Advance Independently
- Funding – Menu of Options
- Trail Governance – Administration and Oversight

Repackaged Trail Alternatives

- On-Highway Trail Alternatives (Separated is Priority)
- SLRG RR (Rails-w-Trails) Alternative
- Ridge Alternative
- Blue/Bear Lakes Alternative
- Meadows Alternative
- North/Monument Lakes Alternative
- Old Trinidad RR (Rails-to-Trails) Alternative

Trail Studies – Project Identification



Project (Study) Definition

- Sections of Independent (SIU) Criteria
- Coordination with Sponsoring Agencies
- Type of Study
 - Sources of Funding
 - Regulatory and Permitting Requirements
- Criteria
 - Purpose and Need
 - Logical and Independent Utility
 - Range of Alternatives
 - Environmental Resource Impacts

SIU	From	To	Trail Alternatives for Additional Study				
			On-Highway Trail			Off-Highway Trail Routes	Combine
			Alt 3A Attached	Alt 3B Separated (1)	Combine		
1	Lathrop State Park	North Side of La Veta	X	X	X	Alt 4A (Rails-with-Trails) (2)	
2	North Side of La Veta	South Side of La Veta	X				
3	South Side of La Veta	MP 14 USFS Boundary	X	X	X		
4	MP 14 USFS Boundary	Cucharas Pass	X	X	X	Alt 4A (Ridge) Alt 4B (Blue/Bear Lakes)	X
5	Cucharas Pass	North Lake	X	X	X	Alt 4A/4B (Meadow)	X
6	North Lake	Monument Lake	X	X	X	Alt 4A/4B (Lake Link)	
7	Monument Lake	Stonewall	X	X	X		
8	Stonewall	Trinidad Lake SP	X	X	X	Alt 4A (Rails-to-Trails) (2)	

Note: (1) Alt 3B priority
(2) Contingent upon change in RR ownership

Highway Safety Projects – Priorities



Project Priorities

- Based on Weighted Accident Rates
- Coordinate with Trail Studies
- Depends on CDOT Funding and Overall Priorities
- Could be Implemented Differently - Flexibility

Project Priority	SIU	General Description	Route	Project Location			Highway Const. Cost (\$M 2020)	Trail Const. Cost (\$M 2020)
				From (MP)	To (MP)	Length (Miles)		
1	8	Segundo Area	SH 12	52.8	56.8	4.0	\$2.5	\$7.4
2	8	Vigil Area	SH 12	42.1	44.1	2.0	\$0.7	\$2.6
3	5/6	Curve SE of North Lake	SH 12	27.0	29.0	2.0	\$1.7	\$4.1
4	1	US 160 to La Veta (N)	SH 12	0.0	4.6	4.6	\$3.2	\$5.5
5	8	Vigil (E) to Segundo (W)	SH 12	44.1	52.8	8.7	\$4.4	\$18.5
6	3/4	La Veta (S) to Cuchara Mtn. Resort	SH 12	5.8	18.4	12.6	\$18.7	\$18.7
7	8	Santa Fe/Main Street Intersection	SH 12	70.7	70.8	0.1	\$2.6	NA
8	8	Segundo (E) to Cokedale (W)	SH 12	56.8	61.4	4.6	\$8.6	\$8.1
9	7/8	Monument Park to Vigil (W)	SH 12	33.6	42.1	8.5	\$4.7	\$13.1
10	6/7	North Lake to Monument Park	SH 12	29.0	33.6	4.6	\$3.8	\$7.0
11	1	US 160 Railroad Crossing	US 160	304.8	305.2	0.4	\$0.1	NA
12	8	Jansen Area	SH 12	68.1	69.1	1.0	\$3.4	NA
13	2	City of La Veta	SH 12	4.6	5.8	1.2	\$0.7	NA
14	4	Cuchara Mtn. Resort to North Lake	SH 12	18.4	27.0	8.6	\$7.1	\$9.2

What's Next



- **Committee Meeting No. 4 – June 2020**
 - Trail and Byway Priorities
 - Funding
 - Governance
- **Public Materials**
 - eNewsletter – Level 2 Findings
 - Press Release and Social Media
- **Public Open House – July 2020**
- **PEL Study Report – June/July 2020**