

I-70 MOUNTAIN CORRIDOR WORKSHOP FOR VISUAL AND AESTHETIC GUIDANCE



I-70 MOUNTAIN CORRIDOR, CSS PROCESS



MAY 29, 2009

INTRODUCTION TO THE WORK SESSION

- FOCUS OF THE WORKSHOP.
- WHAT WILL THE AESTHETICS GUIDANCE SECTION ADDRESS?
- EXPECTED RESULT FROM PARTICIPANTS.
- PREVIOUS WORKSHOPS AND ESTABLISHMENT OF CORE VALUES.



I-70 MOUNTAIN CORRIDOR, CSS PROCESS



MAY 29, 2009

AESTHETIC DESIGN GUIDANCE AND THE CSS PROCESS

- LIVING WEB-BASED CSS GUIDANCE CREATED WITH THE WORKING GROUPS.
- AESTHETIC GUIDANCE EFFORT OVER THE NEXT 6 MONTHS.
- OVERVIEW OF WHAT WILL BE ADDRESSED.



OCTOBER 2008 WORKSHOP



I-70 MOUNTAIN CORRIDOR, CSS PROCESS



MAY 29, 2009

IDEAS DISTILLED FROM OCTOBER WORKSHOP

AESTHETICS, INSPIRED BY THE SURROUNDINGS, WILL PROTECT SCENIC INTEGRITY AND INCORPORATE THE CONTEXT OF PLACE. TIMELESS DESIGN CONTINUES THE CORRIDOR'S LEGACY.

THIS IS WHAT WE HEARD:

- WHEN THE ENTIRE I-70 MOUNTAIN CORRIDOR IS CONSIDERED, AESTHETICS APPLY THROUGHOUT.
- IT IS AN OBJECTIVE TO UNIFY AND CONSISTENTLY MANAGE TO AVOID PIECE MEAL DESIGN IMPLEMENTATION OVER THE NEXT THIRTY YEARS.
- CALL OUT THE SPECIAL AND UNIQUE CHARACTER WITHIN THE TOTAL CORRIDOR.



ENTIRE CORRIDOR VISION
I-70 MOUNTAIN CORRIDOR, CSS PROCESS



AESTHETIC DESIGN PRINCIPLES

- CONNECT TO THE SETTING, HARMONIZE WITH THE SURROUNDINGS AND BE A LIGHT TOUCH ON THE LAND, SUBSERVIENT TO THE LANDSCAPE.
- REFLECT I-70 AS A MAJOR REGIONAL AND NATIONAL TRANSPORTATION CORRIDOR. CELEBRATE CROSSING THE ROCKY MOUNTAINS WITH A HIGH COUNTRY EXPERIENCE.
- RESPECT URBAN, RURAL AND NATURAL SETTINGS.
- DRAW UPON AND REGENERATE THE CONTEXT OF PLACE.



I-70 MOUNTAIN CORRIDOR, CSS PROCESS



MAY 29, 2009

AESTHETIC DESIGN PRINCIPLES

- **AESTHETIC TREATMENTS SHALL:**
 - **SUPPORT SAFETY AND MOBILITY. “ENJOY THE JOURNEY WITHOUT UNEXPECTED DESIGN.”**
 - **SUPPORT COMMUNITIES AND REGIONAL DESTINATIONS BY PROVIDING DIRECT AND SUBLIMINAL MESSAGING FOR GATEWAYS, CONNECTIONS, ACCESS AND IDENTIFICATION.**
 - **MAINTAIN A SENSE OF THE GREATER WHOLE.**
 - **RESPECT THE CURRENT TIME AND PLACE.**
 - **INTEGRATE WITH FUNCTIONAL ELEMENTS.**
 - **BORROW MATERIALS FROM THE LANDSCAPE.**
 - **SHOWCASE KEY VIEWS WHILE BUFFERING INCONSISTENT VIEWS.**



I-70 MOUNTAIN CORRIDOR, CSS PROCESS



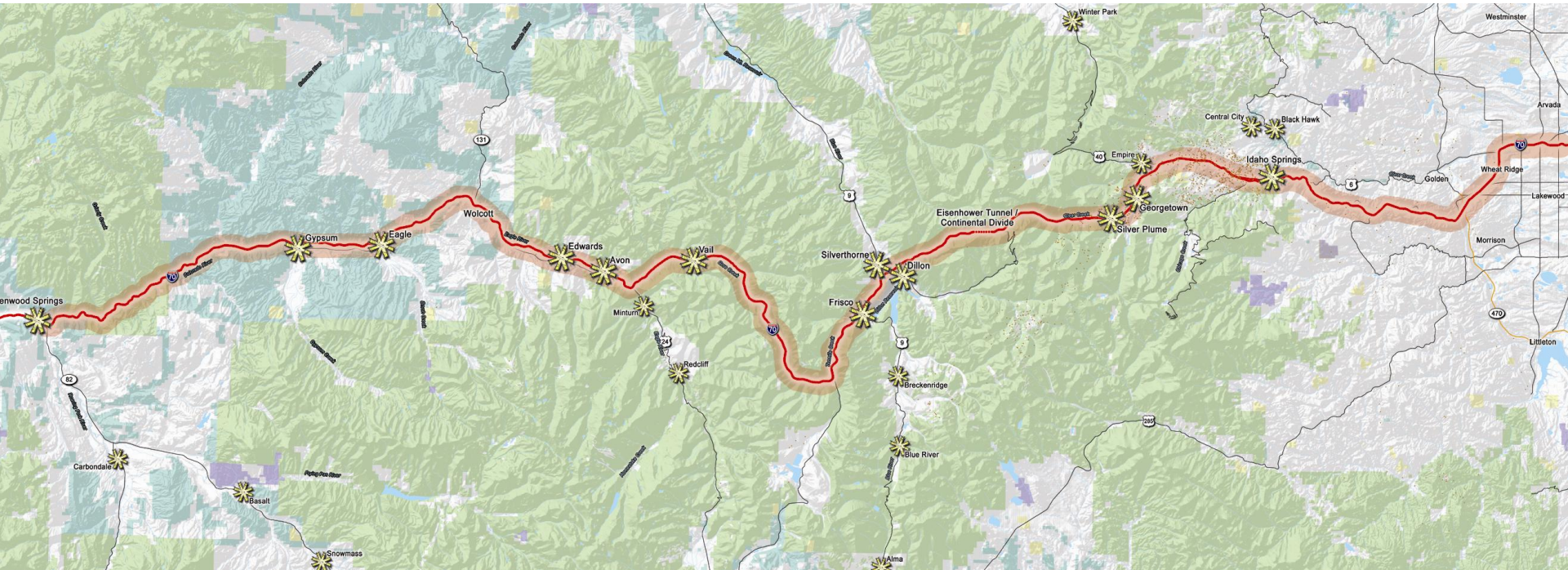
MAY 29, 2009

GLENWOOD SPRINGS

GOLDEN



I-70 MOUNTAIN CORRIDOR



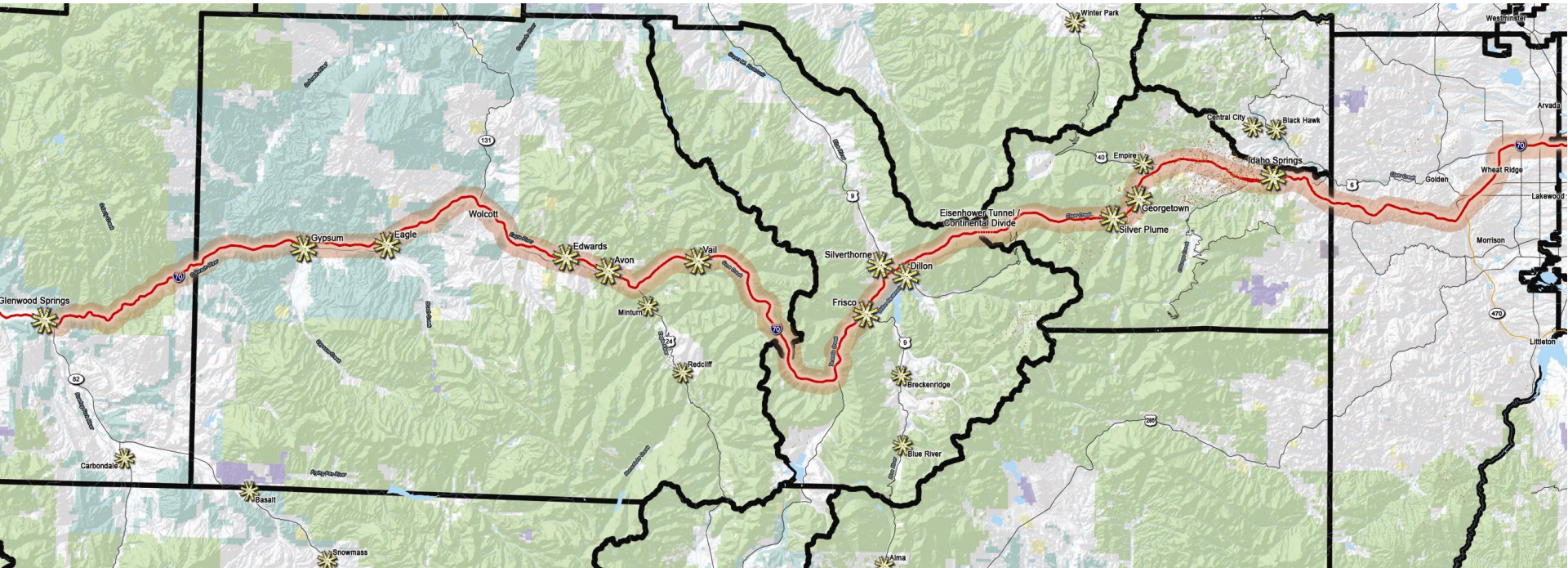
DESIGN SEGMENTS

I-70 MOUNTAIN CORRIDOR, CSS PROCESS



MAY 29, 2009

I-70 MOUNTAIN CORRIDOR



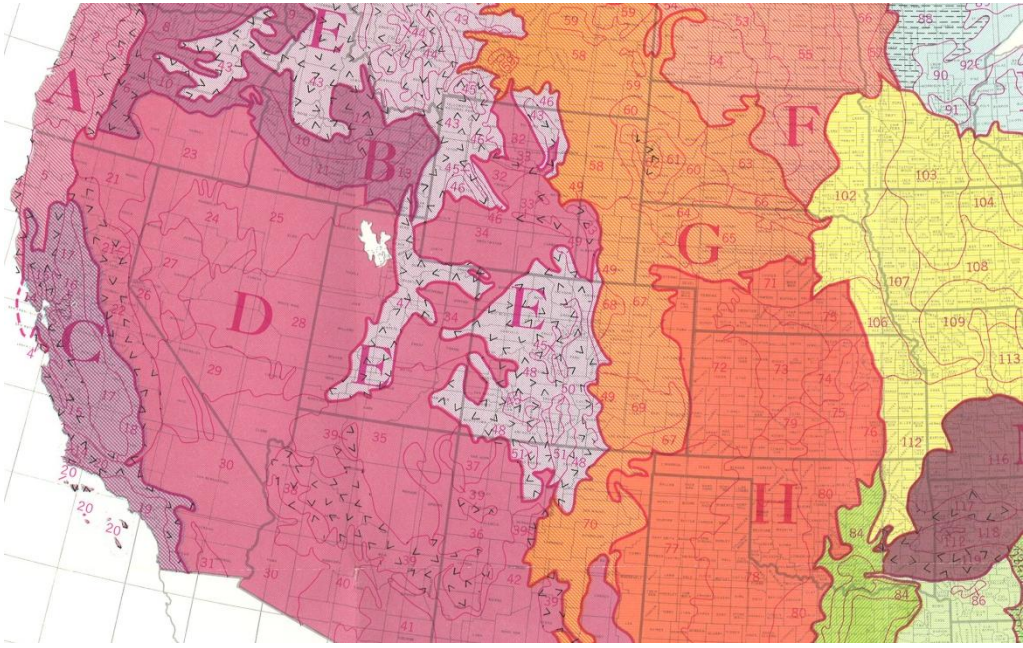
DESIGN SEGMENTS

I-70 MOUNTAIN CORRIDOR, CSS PROCESS



MAY 29, 2009

LANDSCAPE TYPE, SETTLEMENT PATTERN, CULTURAL AND VISUAL CHARACTERISTICS DEFINE THE SEGMENTS.



- A** NORTHWESTERN FOREST, FORAGE, AND SPECIALTY CROP REGION
 - 1 Northern Pacific Coast Range and Valleys
 - 2 Willamette and Puget Sound Valleys
 - 3 Olympic and Cascade Mountains (Western Slope)
 - 4 California Coastal Redwood Belt
 - 5 Siskiyou - Trinity Area
- B** NORTHWESTERN WHEAT AND RANGE REGION
 - 6 Cascade Mountains (Eastern Slope)
 - 7 Columbia Basin
 - 8 Columbia Plateau
 - 9 Palouse and Nez Perce Prairies
 - 10 Upper Snake River Lava Plains and Hills
 - 11 Snake River Plains
 - 12 Lost River Valleys and Mountains
 - 13 Eastern Idaho Plateaus
- C** CALIFORNIA SUBTROPICAL FRUIT, TRUCK, AND SPECIALTY CROP REGION
 - 14 Central California Valleys
 - 15 Central California Coast Range
 - 16 California Delta
 - 17 Sacramento and San Joaquin Valleys
 - 18 Sierra Nevada Foothills
 - 19 Southern California Coastal Plain
 - 20 Southern California Mountains
- D** WESTERN RANGE AND IRRIGATED REGION
 - 21 Klamath and Shasta Valleys and Basins
 - 22 Sierra Nevada Range
 - 23 Malheur High Plateau
 - 24 Humboldt Area
 - 25 Owyhee High Plateau
 - 26 Carson Basin and Mountains
 - 27 Fallon - Lovelock Area
 - 28 Great Salt Lake Area
 - 29 Southern Nevada Basin and Range
 - 30 Sonoran Basin and Range
 - 31 Imperial Valley
 - 32 Northern Intermountain Desertic Basins
 - 33 Semiarid Rocky Mountains
 - 34 Central Desertic Basins, Mountains, and Plateaus
 - 35 Colorado and Green Rivers Plateaus
 - 36 New Mexico and Arizona Plateaus and Mesas
 - 37 San Juan River Valley Mesas and Plateaus
 - 38 Black, Hualapai, and Cerbat Mountains
 - 39 Arizona and New Mexico Mountains
 - 40 Central Arizona Basin and Range
 - 41 Southeastern Arizona Basin and Range
 - 42 Southern Desertic Basins, Plains, and Mountains
- E** ROCKY MOUNTAIN RANGE AND FOREST REGION
 - 43 Northern Rocky Mountains
 - 44 Northern Rocky Mountain Valleys
 - 45 Alpine Meadows and Rocklands
 - 46 Northern Rocky Mountain Foothills
 - 47 Wasatch and Uinta Mountains
 - 48 Southern Rocky Mountains
 - 49 Southern Rocky Mountain Foothills
 - 50 San Luis Valley
 - 51 High Intermountain Valleys
- F** NORTHERN GREAT PLAINS SPRING WHEAT REGION
 - 52 Brown Glaciated Plain
 - 53 Dark Brown Glaciated Plain
 - 54 Rolling Soft Shale Plain
 - 55 Black Glaciated Plains
 - 56 Red River Valley of the North
 - 57 Western Minnesota Forest - Prairie Transition
- G** WESTERN GREAT PLAINS RANGE AND IRRIGATED REGION
 - 58 Northern Rolling High Plains
 - 59 Northern Smooth High Plains
 - 60 Pierre Shale Plains and Badlands
 - 61 Black Hills Foot Slopes
 - 62 Black Hills
 - 63 Rolling Pierre Shale Plains
 - 64 Mixed Sandy and Silty Tableland
 - 65 Nebraska Sand Hills
 - 66 Dakota - Nebraska Eroded Tableland
 - 67 Central High Plains
 - 68 Irrigated Upper Platte River Valley
 - 69 Upper Arkansas Valley Rolling Plains
 - 70 Pecos - Canadian Plains and Valleys
- H** CENTRAL GREAT PLAINS WINTER WHEAT AND RANGE REGION
 - 71 Central Nebraska Loess Hills
 - 72 Central High Tableland
 - 73 Rolling Plains and Breaks
 - 74 Central Kansas Sandstone Hills
 - 75 Central Loess Plains
 - 76 Bluestem Hills
 - 77 Southern High Plains
 - 78 Central Rolling Red Plains
 - 79 Great Bend Sand Plains
 - 80 Central Rolling Red Prairies
- I** SOUTHWESTERN PLATEAUS AND PLAINS RANGE AND COTTON REGION
 - 81 Edwards Plateau
 - 82 Texas Central Basin
 - 83 Rio Grande Plain

Source: Soil Conservation Service



DESIGN SEGMENTS I-70 MOUNTAIN CORRIDOR, CSS PROCESS



HISTORIC SETTLEMENT PATTERNS



I-70 MOUNTAIN CORRIDOR, CSS PROCESS



MAY 29, 2009

HISTORIC SETTLEMENT PATTERNS



I-70 MOUNTAIN CORRIDOR, CSS PROCESS



MAY 29, 2009

SETTLEMENT PATTERNS



I-70 MOUNTAIN CORRIDOR, CSS PROCESS



MAY 29, 2009

LIFE ZONES



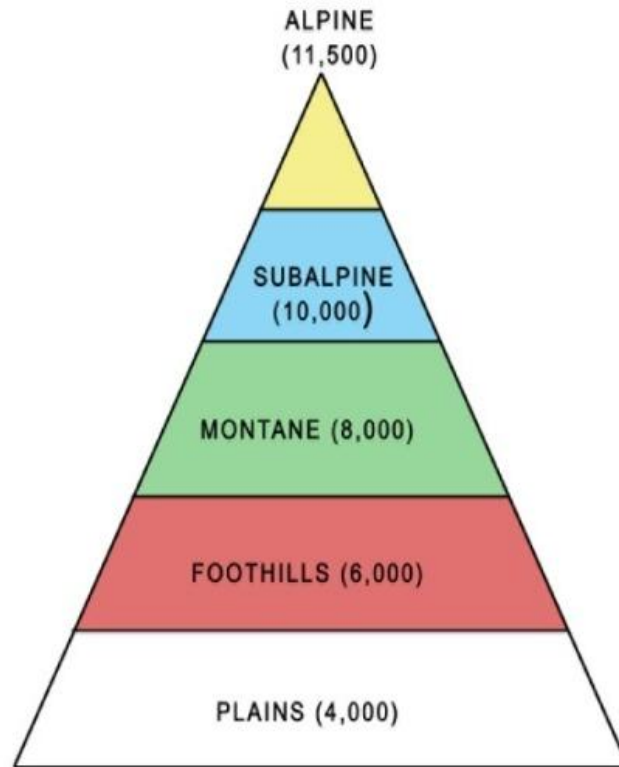
ALPINE



SUBALPINE



MONTANE



RIPARIAN



FOOTHILLS



PLAINS

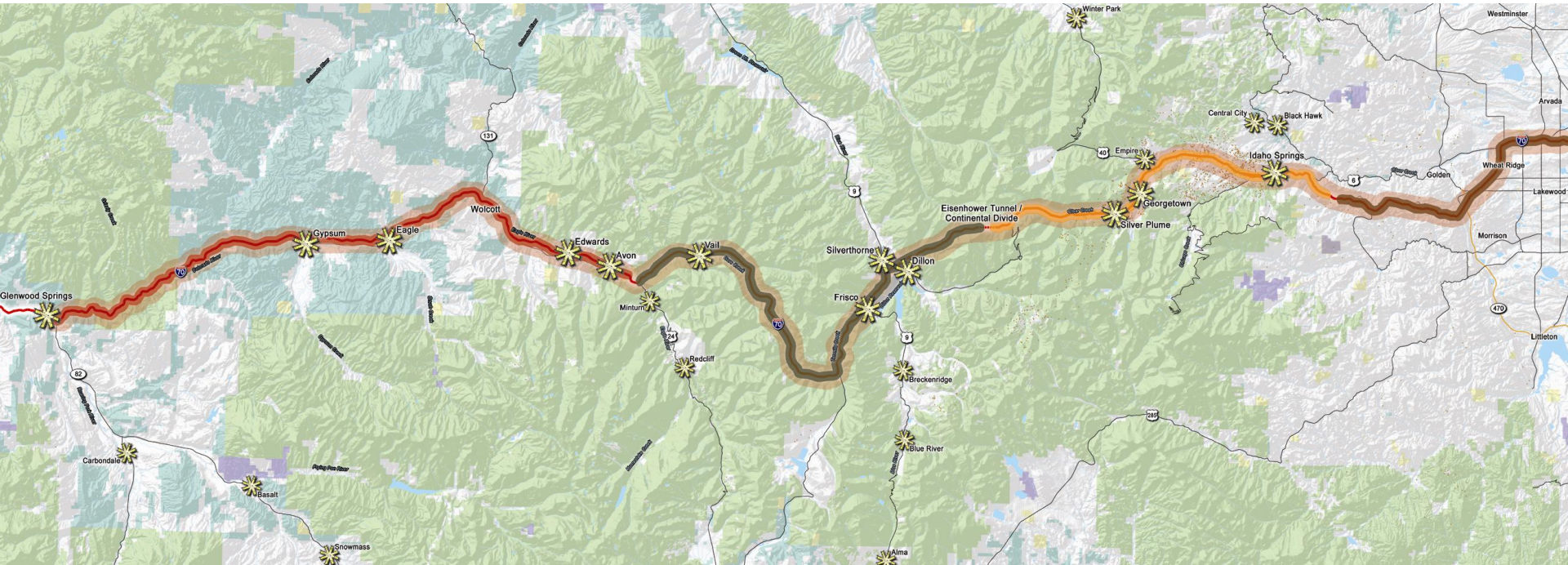


I-70 MOUNTAIN CORRIDOR, CSS PROCESS



MAY 29, 2009

I-70 MOUNTAIN CORRIDOR



DESIGN SEGMENTS

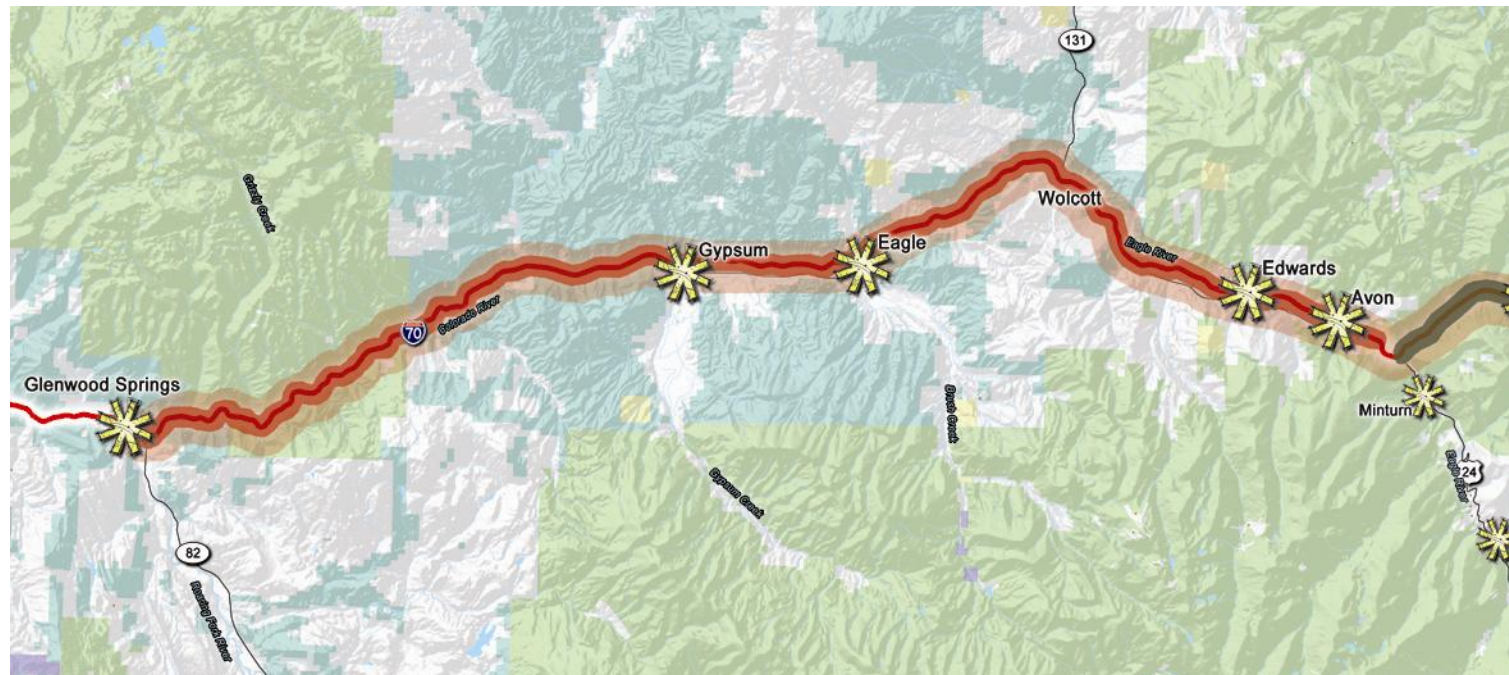
I-70 MOUNTAIN CORRIDOR, CSS PROCESS



MAY 29, 2009

WESTSLOPE CANYONS AND PLATEAU DESIGN SEGMENT

- FROM GLENWOOD SPRINGS TO AVON



WESTSLOPE CANYONS AND PLATEAU DESIGN SEGMENT
I-70 MOUNTAIN CORRIDOR, CSS PROCESS



- HIGH DESERT PLATEAUS AND CANYON.
- COLORADO RIVER.
- TRADITIONALLY SETTLED AS RANCHING.
- LONG TERM COMMUNITIES.
- ARID LANDSCAPE.
- SAGEBRUSH AND PINYON/JUNIPER PLANT COMMUNITIES.



WESTSLOPE CANYONS AND PLATEAU DESIGN SEGMENT
I-70 MOUNTAIN CORRIDOR, CSS PROCESS



DESIGN SEGMENTS



WESTSLOPE CANYONS AND PLATEAU DESIGN SEGMENT I-70 MOUNTAIN CORRIDOR, CSS PROCESS



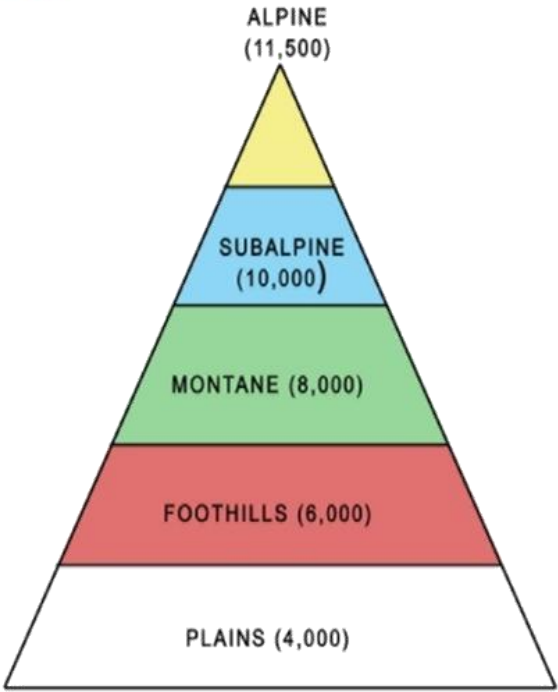
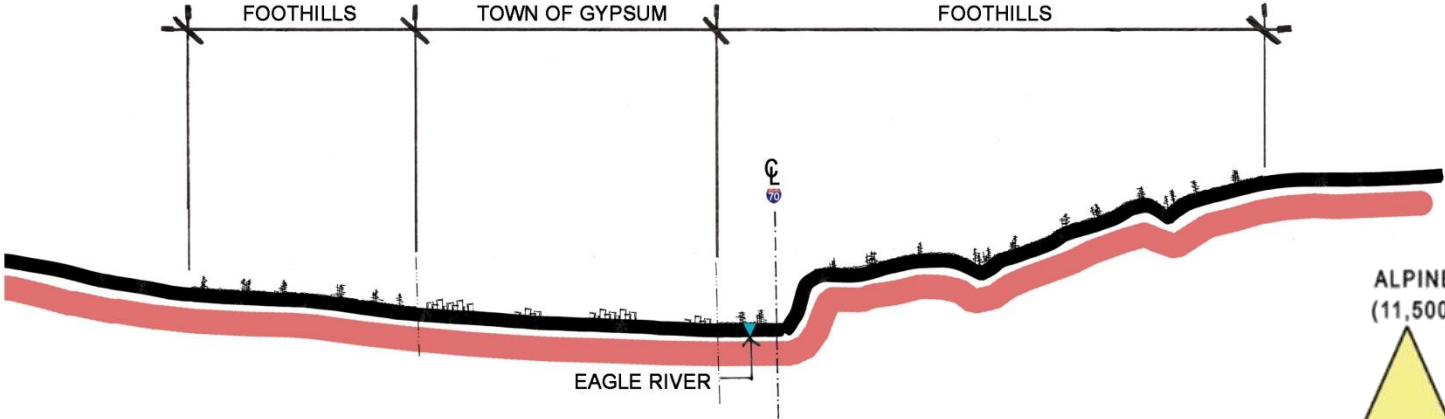
DESIGN SEGMENTS



WESTSLOPE CANYONS AND PLATEAU DESIGN SEGMENT I-70 MOUNTAIN CORRIDOR, CSS PROCESS



DESIGN SEGMENTS



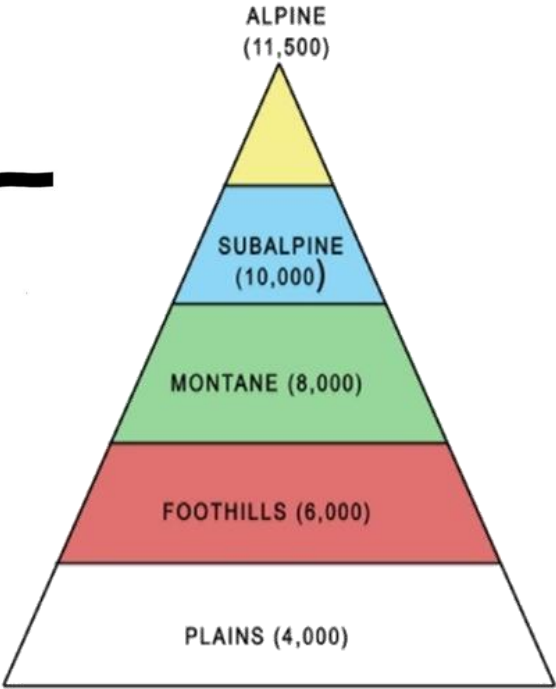
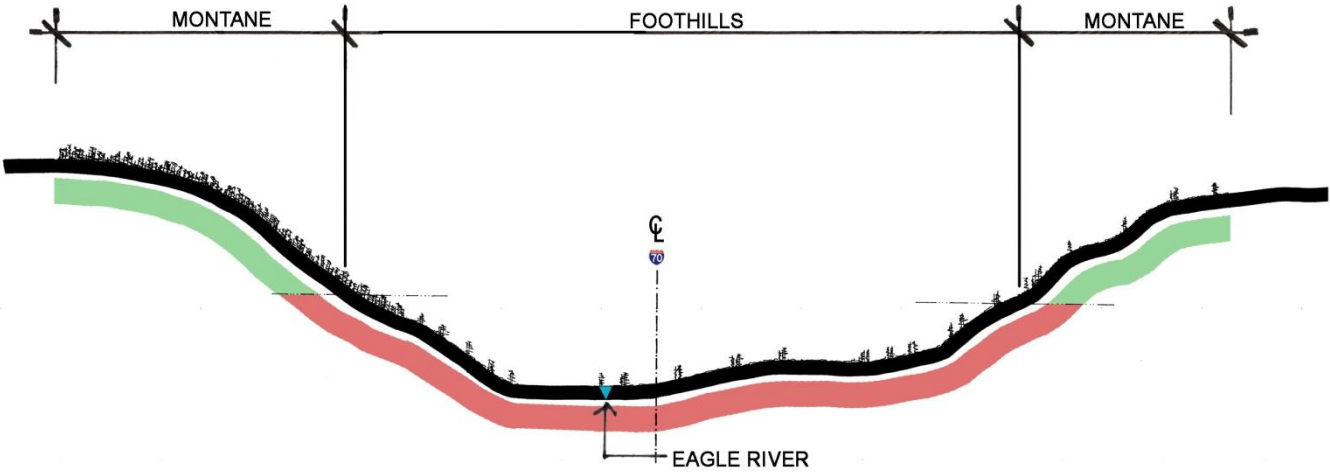
TOWN OF GYPSUM



WESTSLOPE CANYONS AND PLATEAU DESIGN SEGMENT
I-70 MOUNTAIN CORRIDOR, CSS PROCESS



DESIGN SEGMENTS



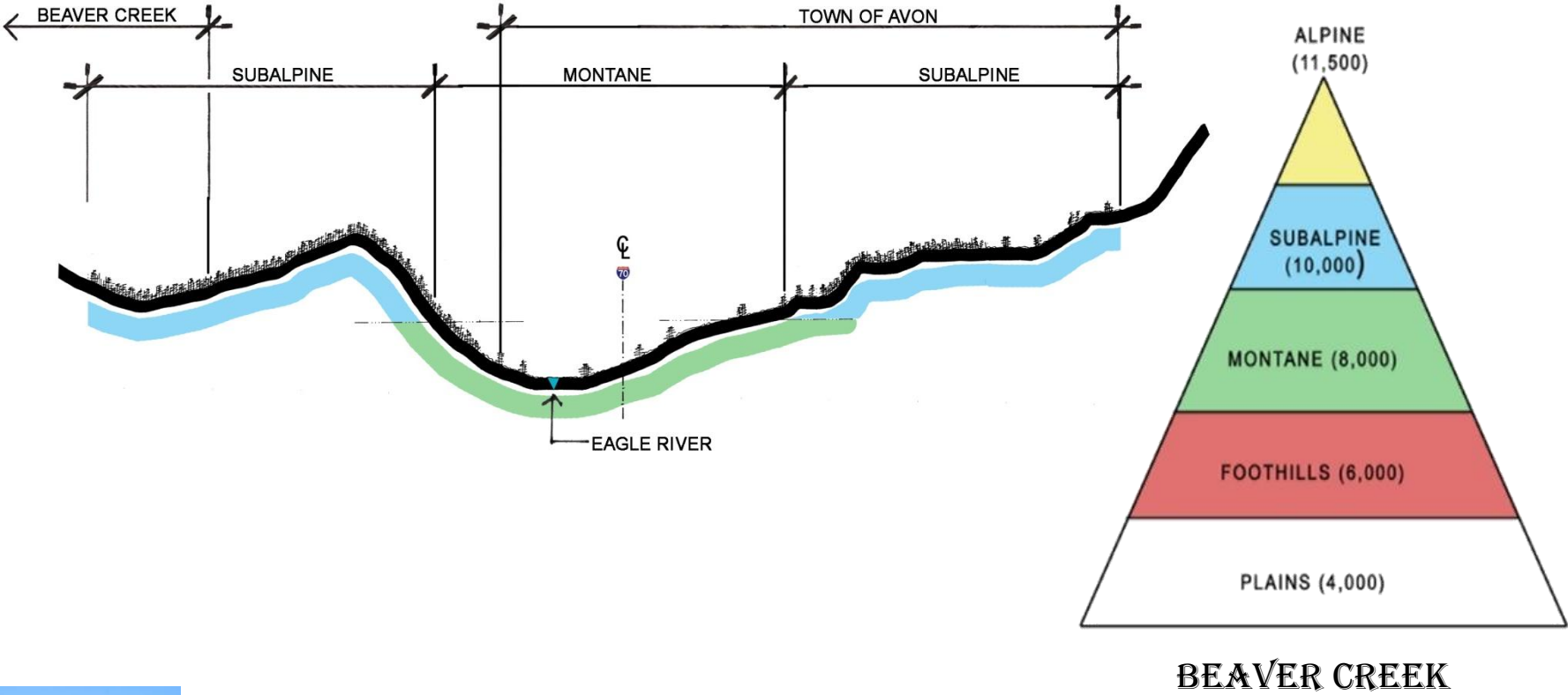
WEST OF TOWN OF AVON



WESTSLOPE CANYONS AND PLATEAU DESIGN SEGMENT
I-70 MOUNTAIN CORRIDOR, CSS PROCESS



DESIGN SEGMENTS



CREST OF THE ROCKY MOUNTAINS DESIGN SEGMENT
I-70 MOUNTAIN CORRIDOR, CSS PROCESS



SPECIAL SEGMENT WITHIN GLENWOOD CANYON

- A FOUR LANE HIGHWAY ELEVATED ON BRIDGES AND STRUCTURES.
- UNIFORM DESIGN APPLIED TO HIGHWAY.
- RECREATIONAL USE INTEGRATED.
- RE-CONSTRUCTED LANDSCAPE OF ROCK, TALUS, AND NATIVE PLANTS.

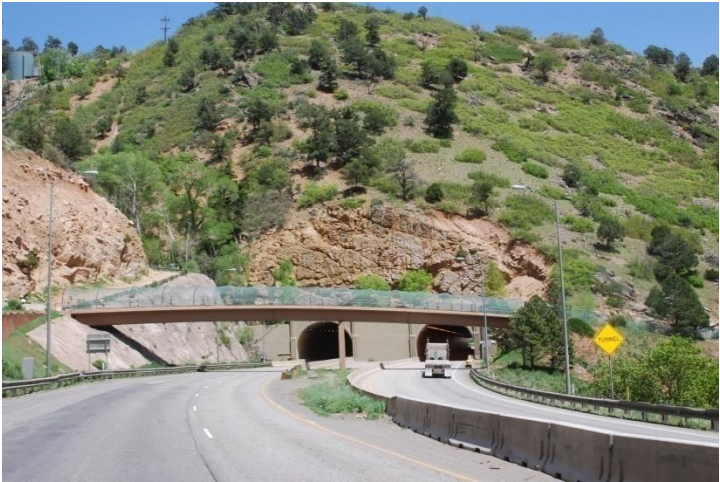


GLENWOOD CANYON

I-70 MOUNTAIN CORRIDOR, CSS PROCESS



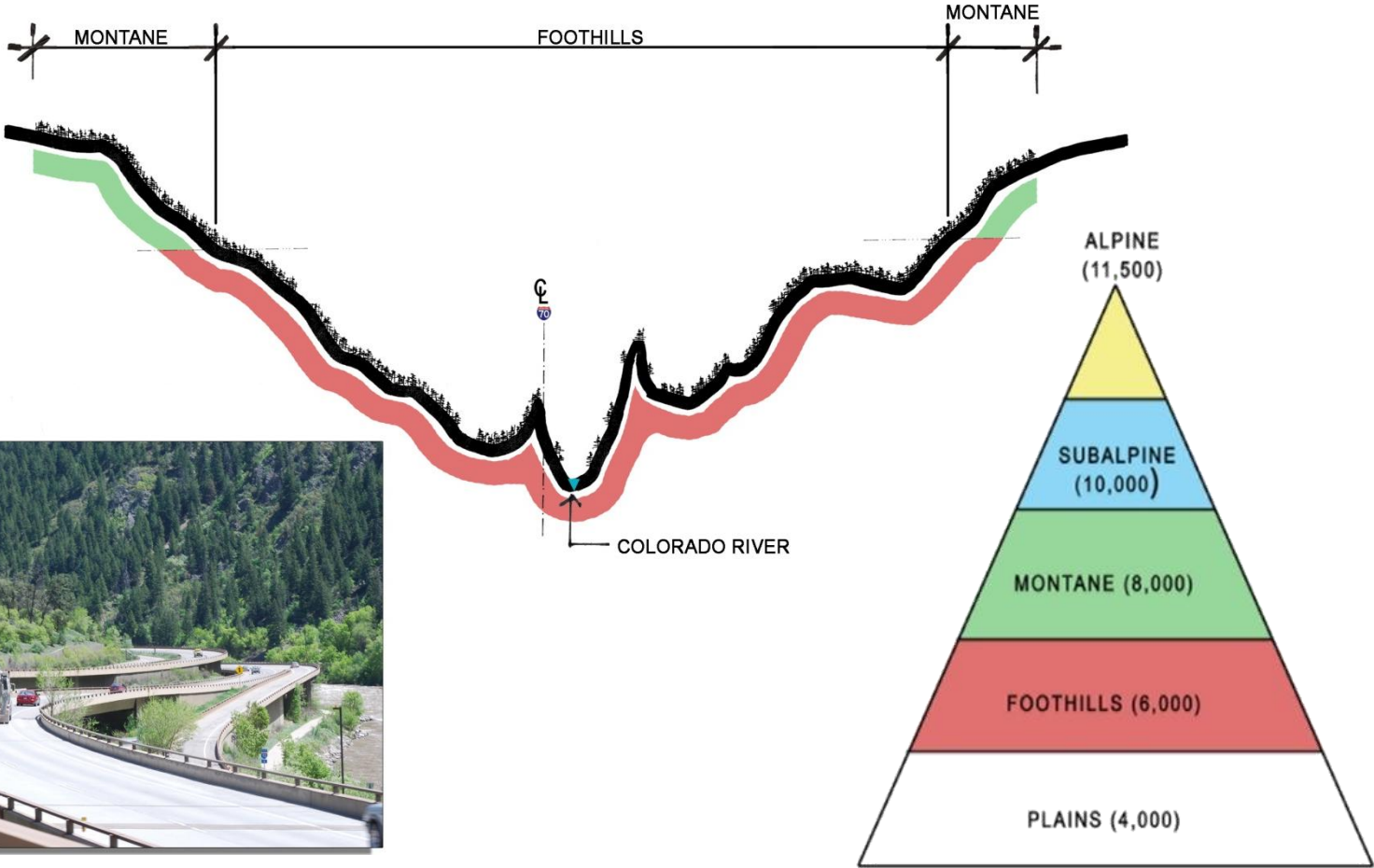
DESIGN SEGMENTS



GLENWOOD CANYON
I-70 MOUNTAIN CORRIDOR, CSS PROCESS



DESIGN SEGMENTS



GLENWOOD CANYON

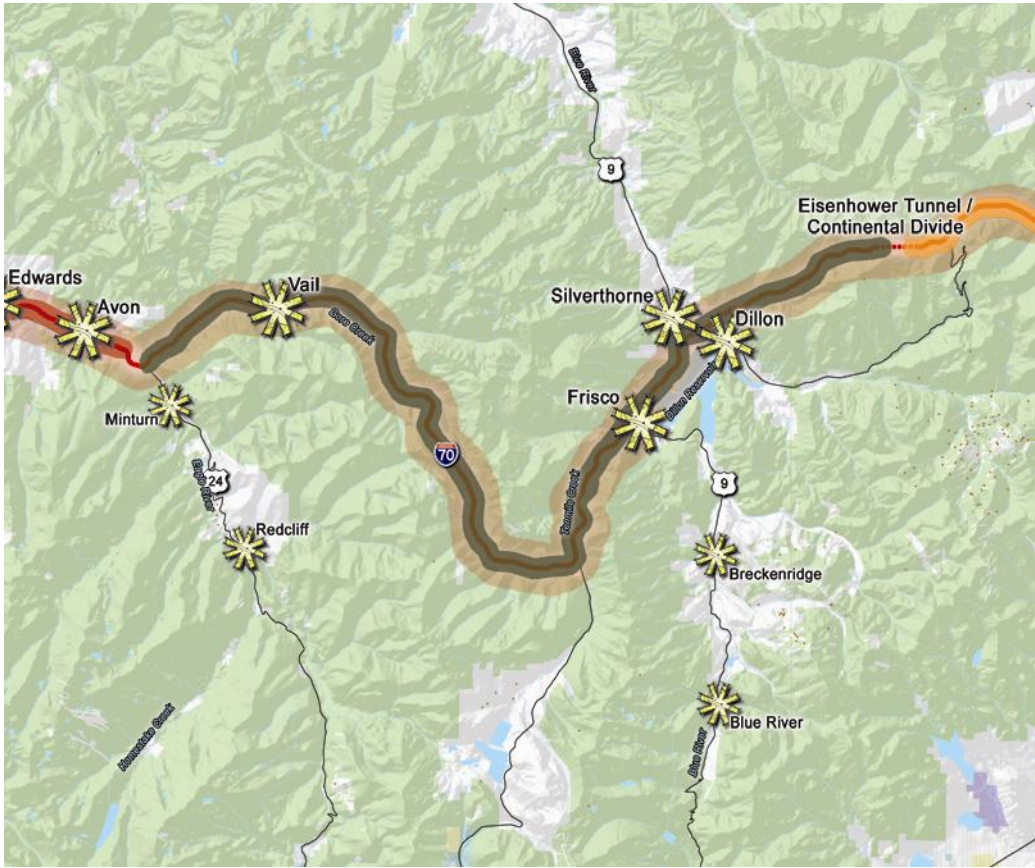


GLENWOOD CANYON
 I-70 MOUNTAIN CORRIDOR, CSS PROCESS



CREST OF THE ROCKY MOUNTAIN DESIGN SEGMENT

- FROM AVON TO EISENHOWER/JOHNSON TUNNEL



CREST OF THE ROCKY MOUNTAINS DESIGN SEGMENT
I-70 MOUNTAIN CORRIDOR, CSS PROCESS



DESIGN SEGMENTS

- ALPINE CHARACTER.
- CONTINENTAL DIVIDE.
- RECREATIONAL FOCUS AND RESOURCES.
- DESTINATION RESORT COMMUNITIES.
- CHALLENGING MOUNTAIN CLIMATE ZONE.
- FORESTED LANDSCAPE.
- NATURAL MOUNTAINOUS LANDFORM.
- MANMADE INFRASTRUCTURE SCAR THE LANDSCAPE.



CREST OF THE ROCKY MOUNTAINS DESIGN SEGMENT
I-70 MOUNTAIN CORRIDOR, CSS PROCESS



MAY 29, 2009

RECREATION FOCUS

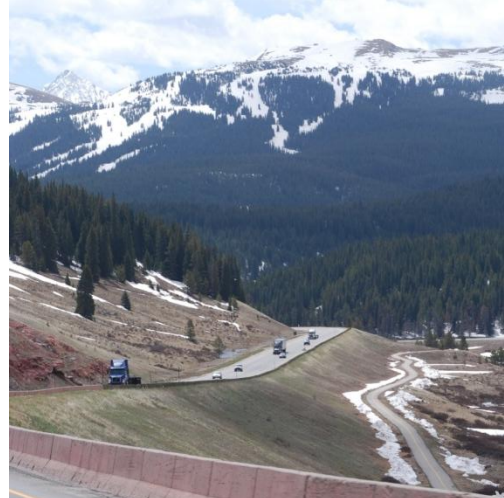


CREST OF THE ROCKY MOUNTAINS DESIGN SEGMENT
I-70 MOUNTAIN CORRIDOR, CSS PROCESS



MAY 29, 2009

DESIGN SEGMENTS



CREST OF THE ROCKY MOUNTAINS DESIGN SEGMENT I-70 MOUNTAIN CORRIDOR, CSS PROCESS



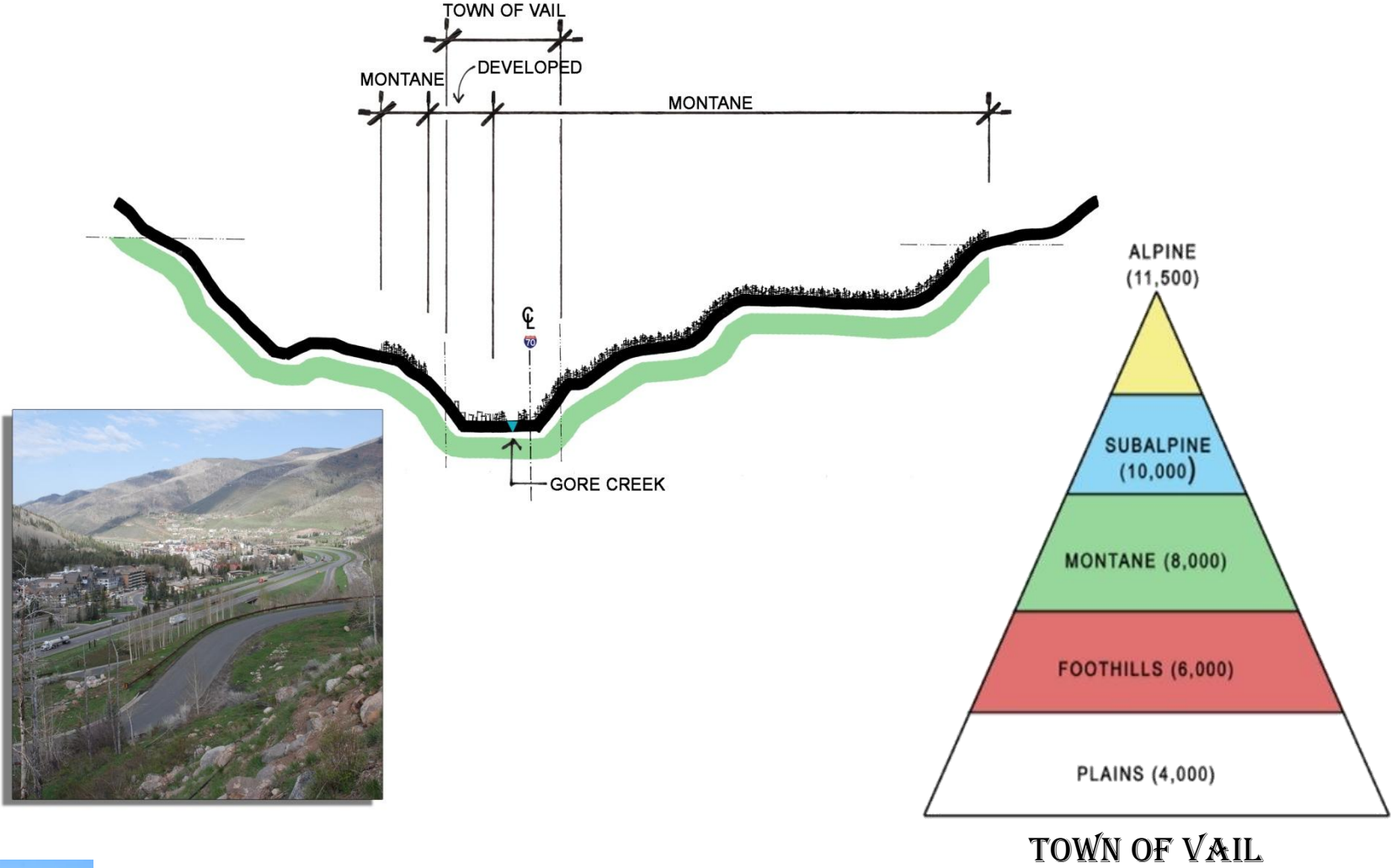
DESIGN SEGMENTS



CREST OF THE ROCKY MOUNTAINS DESIGN SEGMENT I-70 MOUNTAIN CORRIDOR, CSS PROCESS



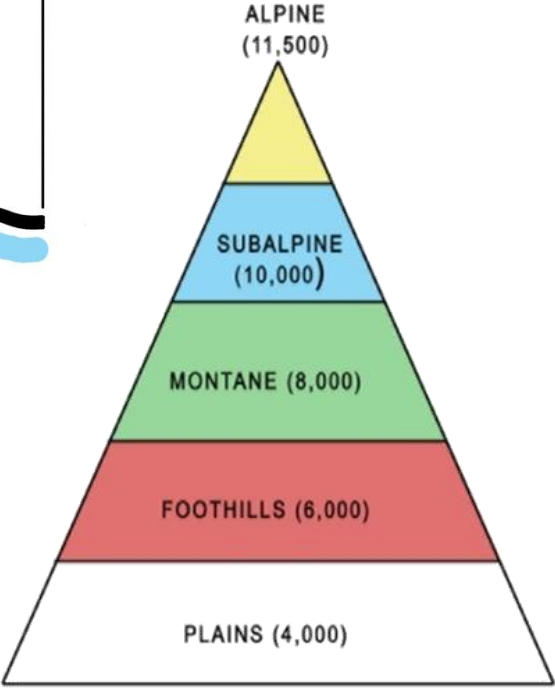
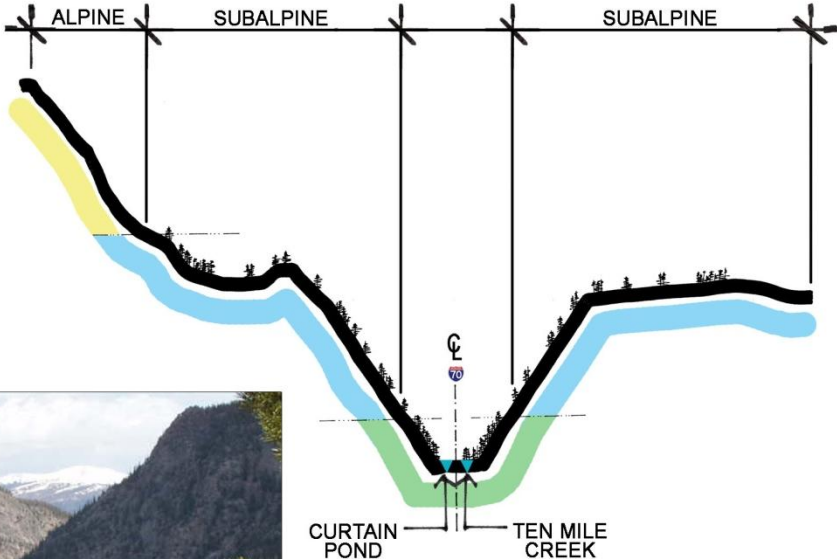
DESIGN SEGMENTS



CREST OF THE ROCKY MOUNTAINS DESIGN SEGMENT
I-70 MOUNTAIN CORRIDOR, CSS PROCESS



DESIGN SEGMENTS



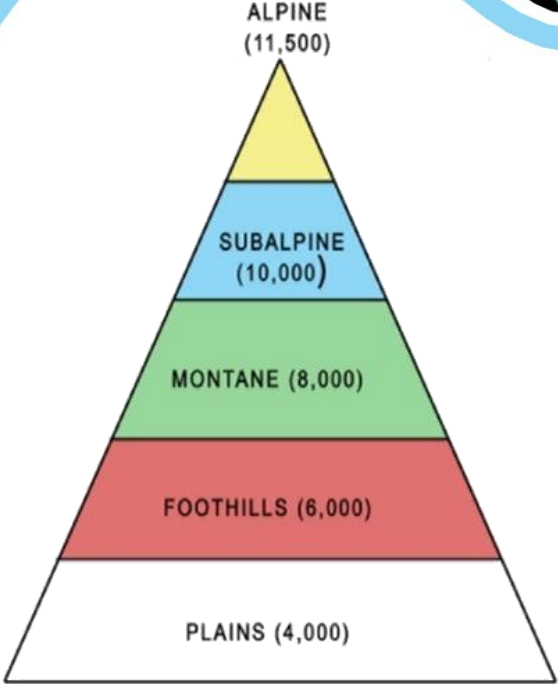
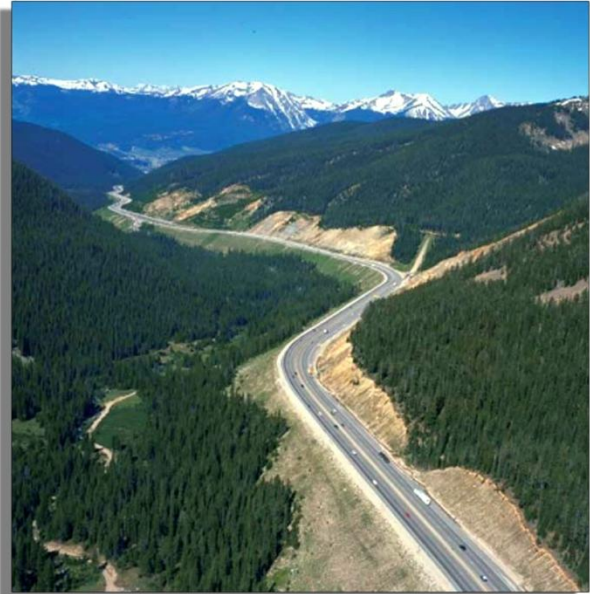
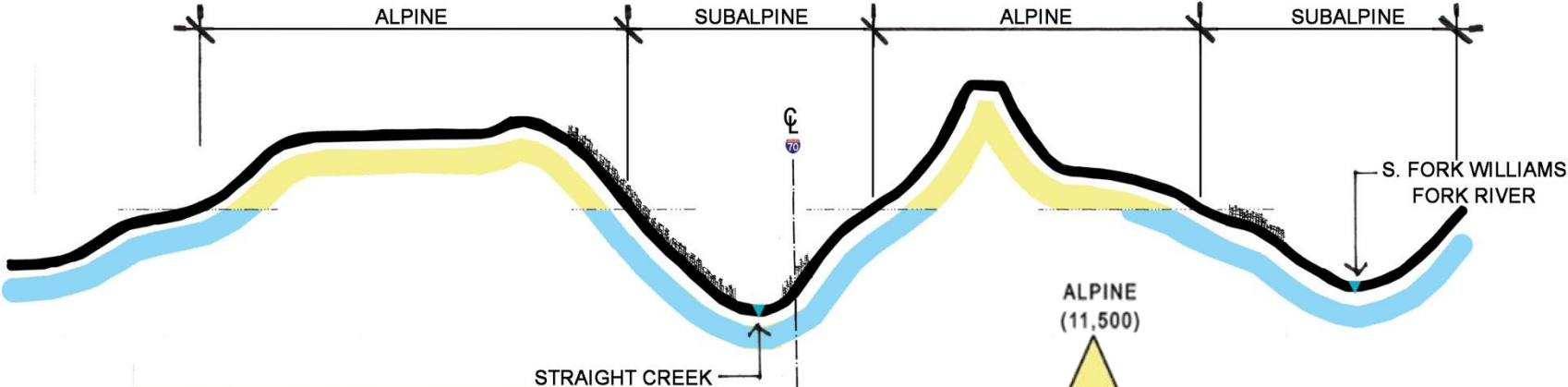
OFFICERS GULCH



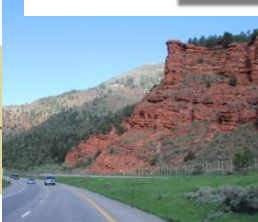
CREST OF THE ROCKY MOUNTAINS DESIGN SEGMENT
I-70 MOUNTAIN CORRIDOR, CSS PROCESS



DESIGN SEGMENTS



EISENHOWER TUNNEL



CREST OF THE ROCKY MOUNTAINS DESIGN SEGMENT

I-70 MOUNTAIN CORRIDOR, CSS PROCESS



SPECIAL SEGMENT WITHIN VAIL PASS

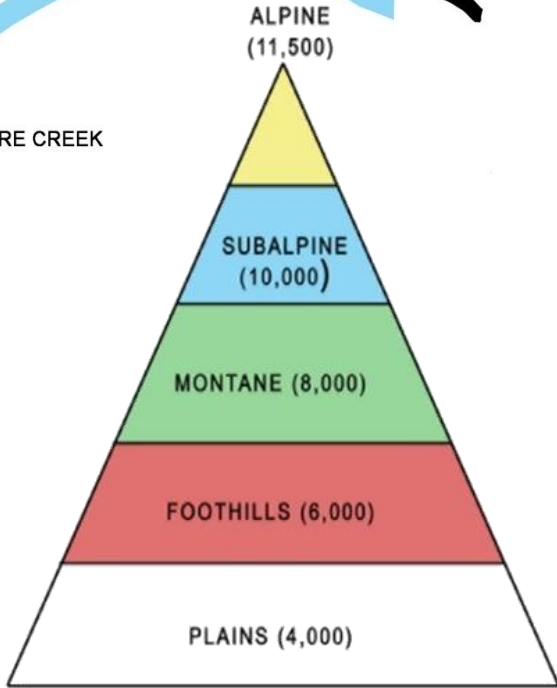
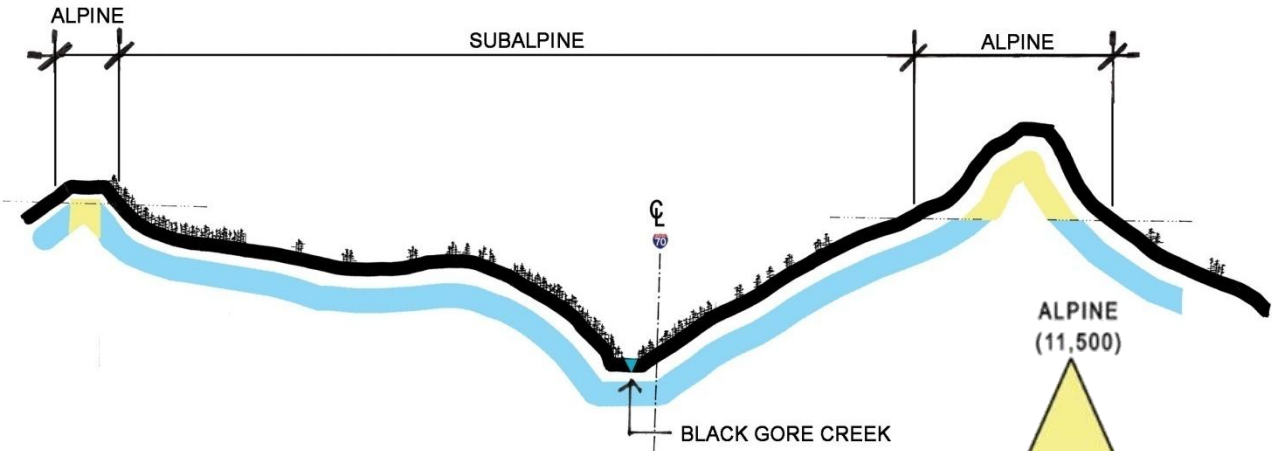
- DESIGNED TO BE RECONSTRUCTED LANDSCAPE.
- VARIABLE CUT-FILL SLOPE, ROCK LEDGE, AND NEW PLANTING.
- DISTINCTIVE COLOR TO STRUCTURES.
- ROADWAY DESIGNED TO FIT THE LANDSCAPE.



CREST OF THE ROCKY MOUNTAINS DESIGN SEGMENT
I-70 MOUNTAIN CORRIDOR, CSS PROCESS



DESIGN SEGMENTS



VAIL PASS

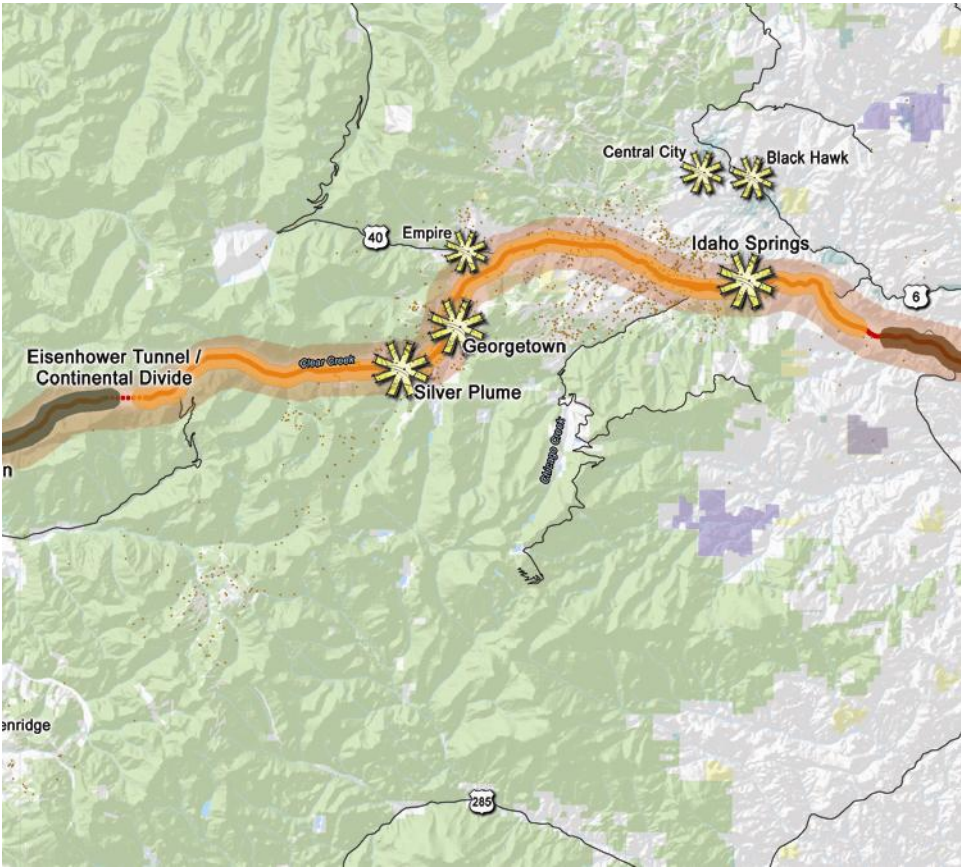


CREST OF THE ROCKY MOUNTAINS DESIGN SEGMENT
I-70 MOUNTAIN CORRIDOR, CSS PROCESS



MOUNTAIN MINERAL BELT DESIGN SEGMENT

- EISENHOWER TUNNEL TO FLOYD HILL



MOUNTAIN MINERAL BELT DESIGN SEGMENT
I-70 MOUNTAIN CORRIDOR, CSS PROCESS



DESIGN SEGMENTS

- HIGH MOUNTAIN AND VALLEY LANDSCAPE.
- HISTORICAL TOWNS AND VALLEYS.
- SETTLED DURING THE WESTWARD EXPANSION.
- VISUAL CHARACTER OF HISTORIC MINING.
- NARROW STREAM CORRIDOR WITH MUCH MANMADE ENCROACHMENT.
- NEW PURPOSE AND USES IN HISTORIC TOWNS.
- RICH VICTORIAN ARCHITECTURAL HERITAGE.



MOUNTAIN MINERAL BELT DESIGN SEGMENT

I-70 MOUNTAIN CORRIDOR, CSS PROCESS



MAY 29, 2009

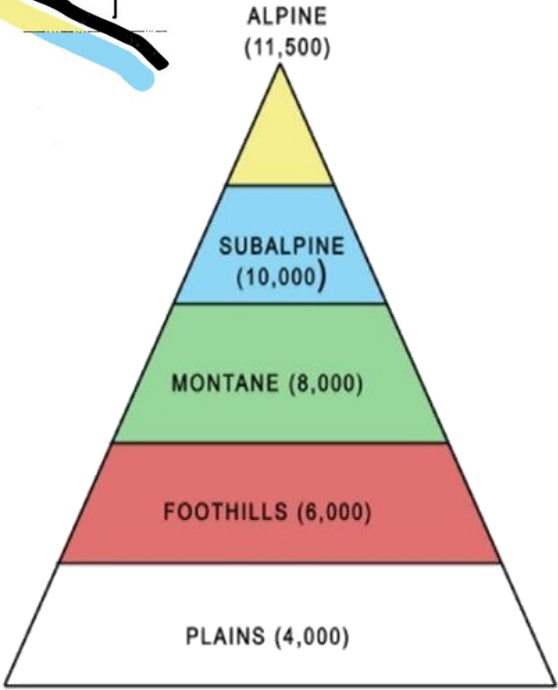
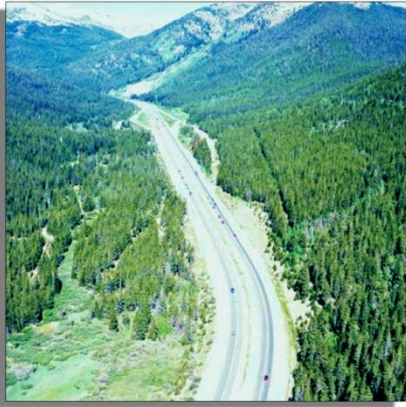
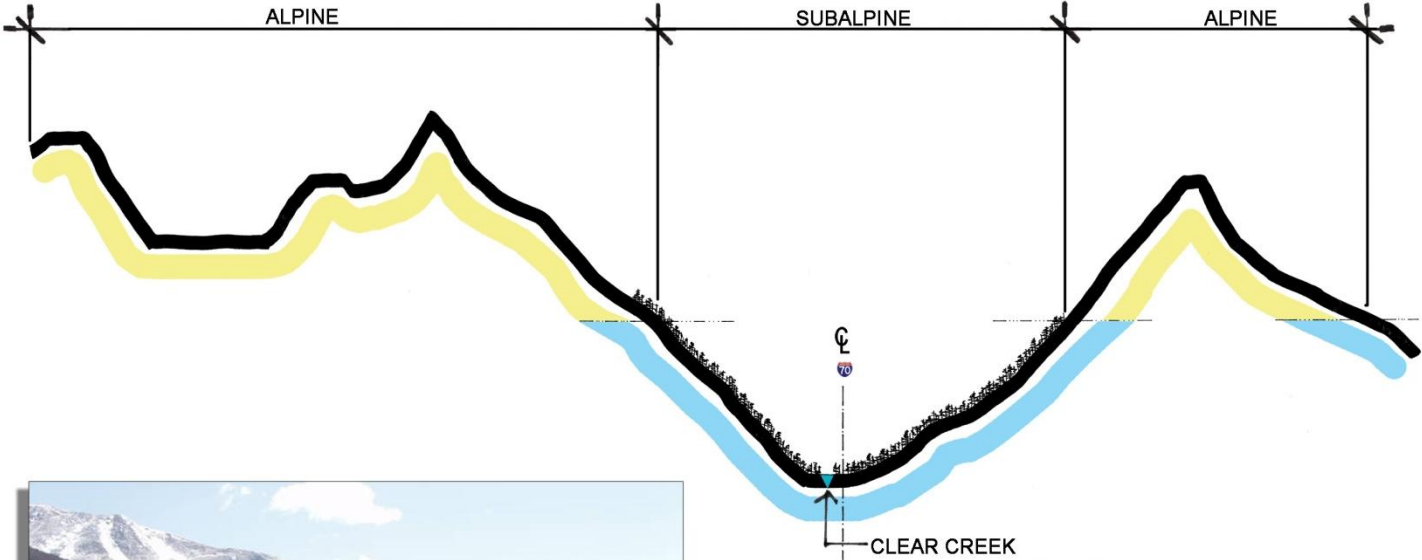
DESIGN SEGMENTS



MOUNTAIN MINERAL BELT DESIGN SEGMENT
I-70 MOUNTAIN CORRIDOR, CSS PROCESS



DESIGN SEGMENTS



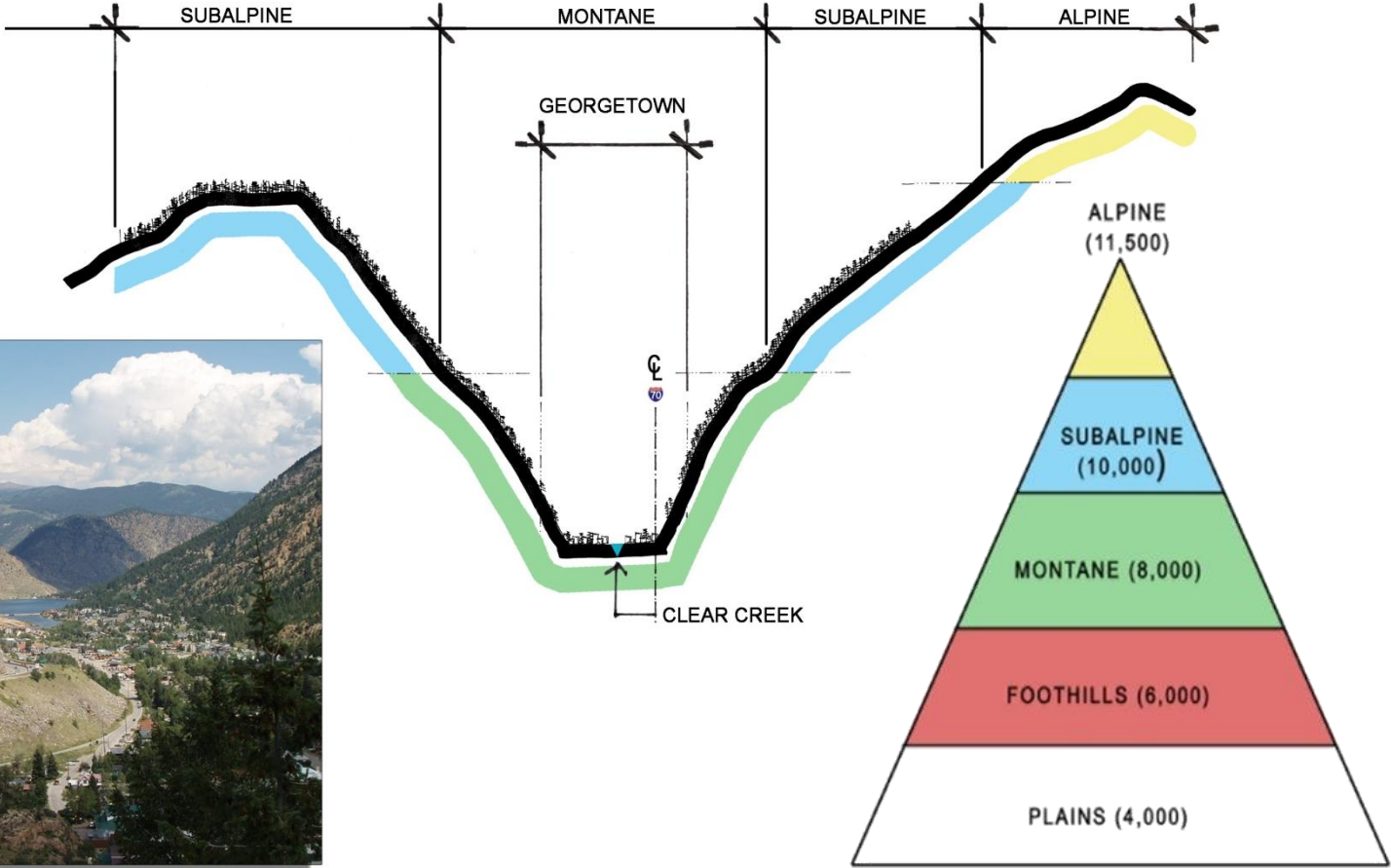
HERMAN GULCH



MOUNTAIN MINERAL BELT DESIGN SEGMENT
I-70 MOUNTAIN CORRIDOR, CSS PROCESS



DESIGN SEGMENTS



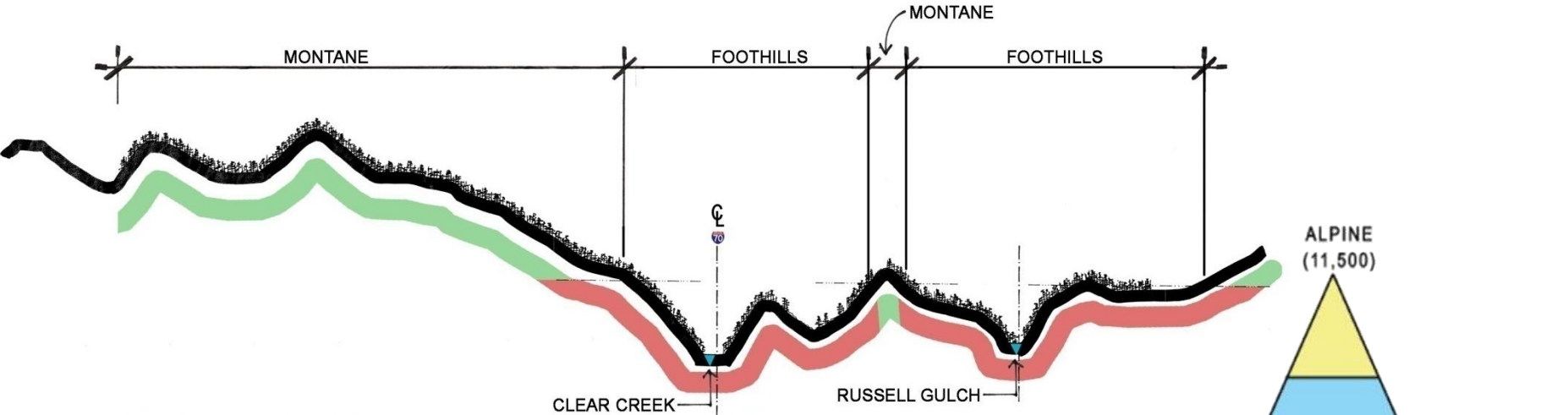
TOWN OF GEORGETOWN



MOUNTAIN MINERAL BELT DESIGN SEGMENT
I-70 MOUNTAIN CORRIDOR, CSS PROCESS



DESIGN SEGMENTS



CITY OF IDAHO SPRINGS

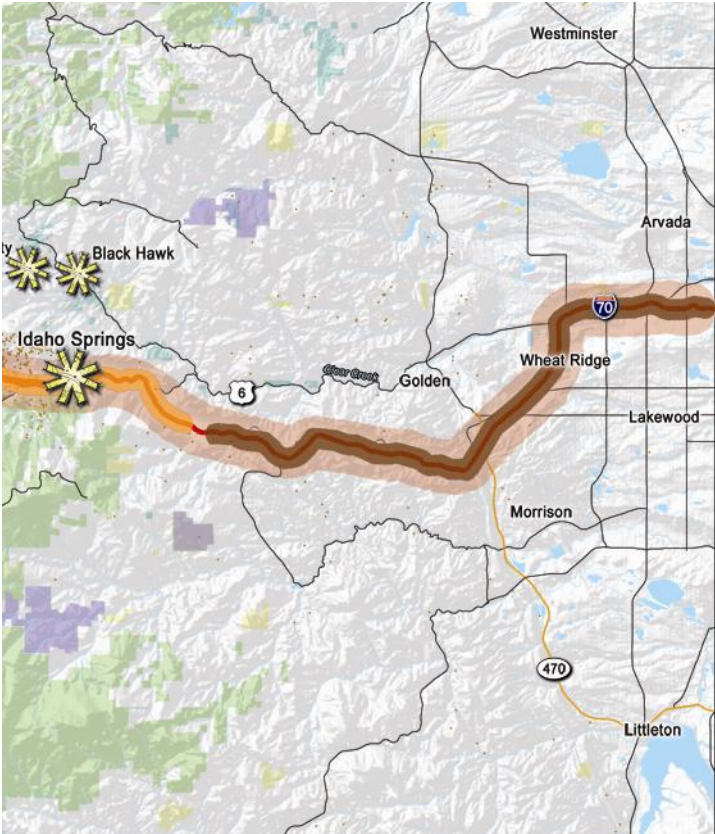


MOUNTAIN MINERAL BELT DESIGN SEGMENT
I-70 MOUNTAIN CORRIDOR, CSS PROCESS



FRONT RANGE FOOTHILL DESIGN SEGMENT

- FROM FLOYD HILL TO GOLDEN



FRONT RANGE FOOTHILL DESIGN SEGMENT
I-70 MOUNTAIN CORRIDOR, CSS PROCESS



DESIGN SEGMENTS

- TRANSITION FROM PRAIRIE TO MOUNTAINS.
- PLANT COMMUNITIES CONSIST OF OPEN GRASSLANDS AND PONDEROSA PINES.
- METROPOLITAN REGION CHARACTER AND RESIDENTIAL AND COMMUNITY DEVELOPMENT IN RURAL SETTING.
- URBAN INTERFACE.



FRONT RANGE FOOTHILL DESIGN SEGMENT
I-70 MOUNTAIN CORRIDOR, CSS PROCESS



MAY 29, 2009

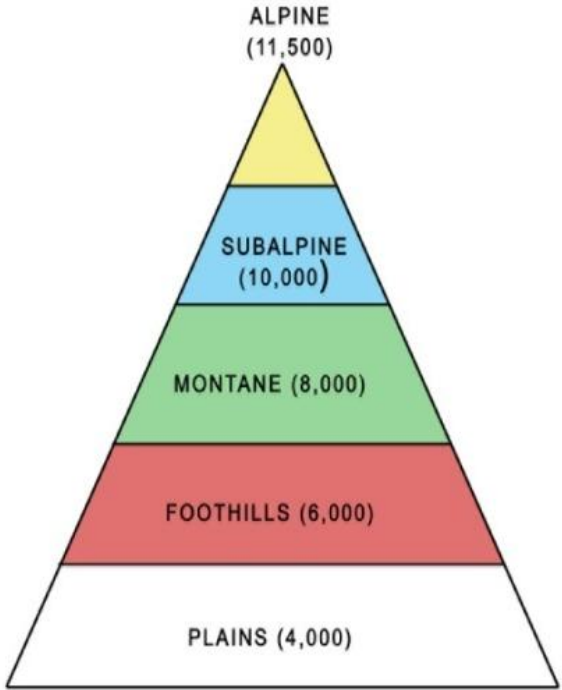
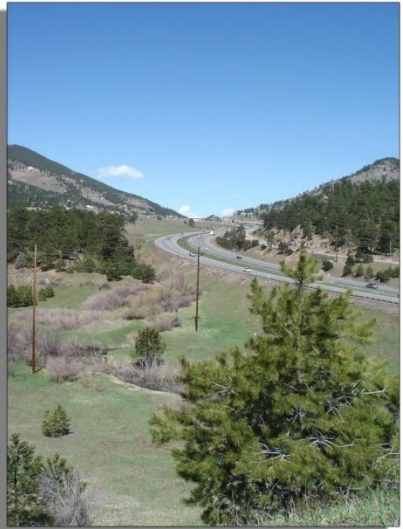
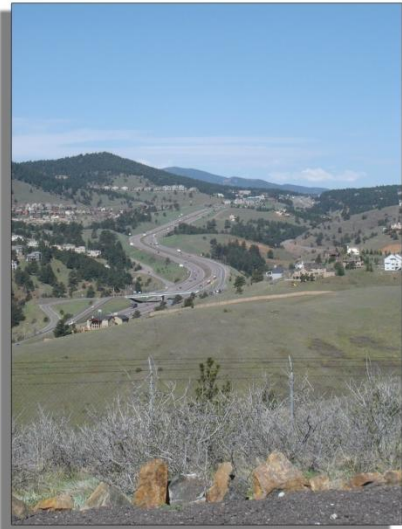
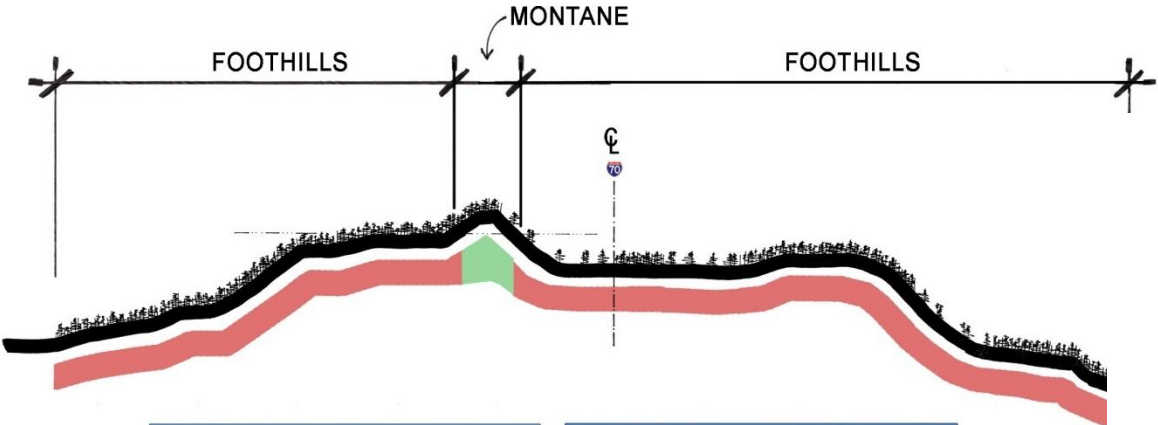
DESIGN SEGMENTS



FRONT RANGE FOOTHILL DESIGN SEGMENT I-70 MOUNTAIN CORRIDOR, CSS PROCESS



DESIGN SEGMENTS



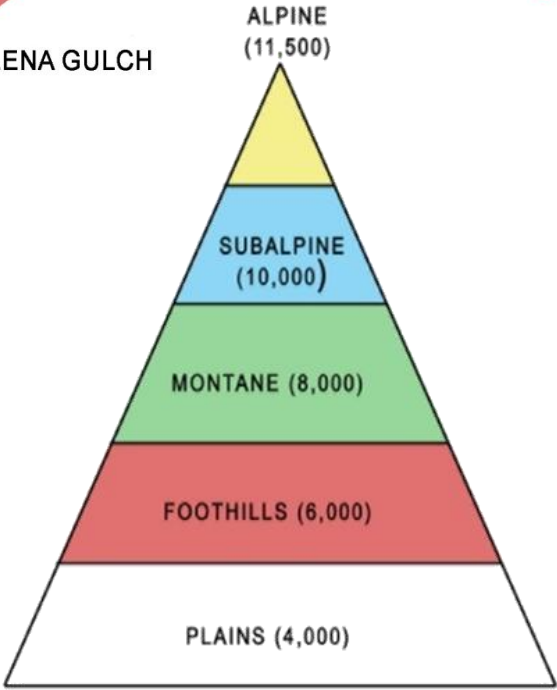
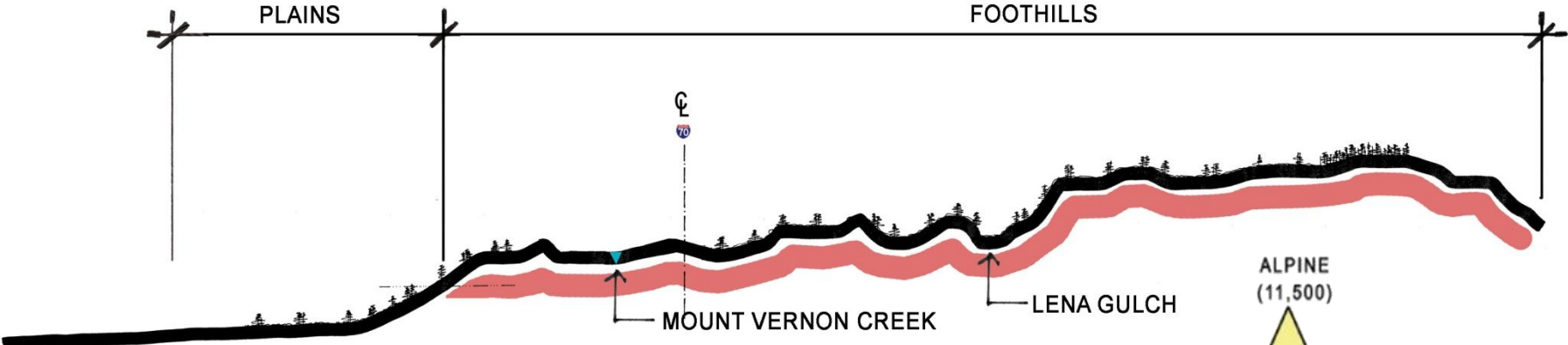
PICTURE BRIDGE



FRONT RANGE FOOTHILL DESIGN SEGMENT
I-70 MOUNTAIN CORRIDOR, CSS PROCESS



DESIGN SEGMENTS



HOGBACK



FRONT RANGE FOOTHILL DESIGN SEGMENT
I-70 MOUNTAIN CORRIDOR, CSS PROCESS



DESIGN SEGMENT GUIDANCE

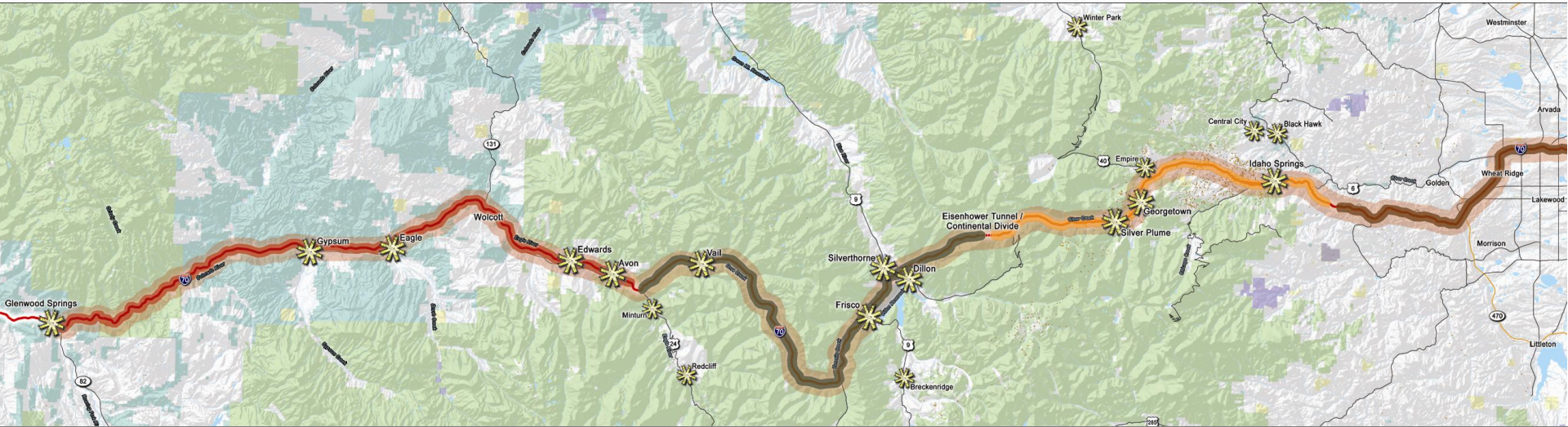
DESIGN SEGMENTS

WESTERN SLOPE CANYONS & PLATEAU

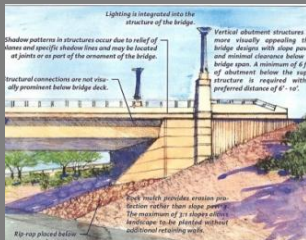
CREST OF THE ROCKY MOUNTAINS

MOUNTAIN MINERAL BELT

FRONT RANGE FOOTHILLS



CUSTOMIZE GUIDANCE BY DESIGN SEGMENT



BRIDGES AND STRUCTURES



ROCK CUTS



STREAM CORRIDOR



URBAN DESIGN



I-70 MOUNTAIN CORRIDOR, CSS PROCESS



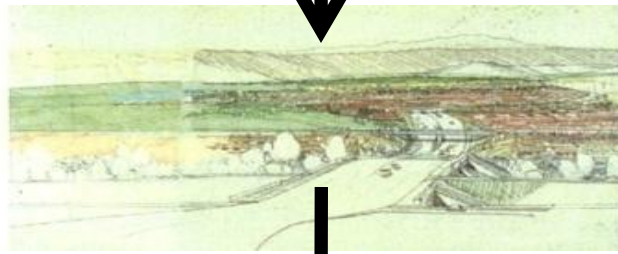
ÆSTHETIC PROCESS



EXISTING CONDITIONS
CORE VALUES
DESIGN PRINCIPLES
DESIGN SEGMENTS



CONTEXT
ANALYSIS
STRATEGIES



IDEAS
CONCEPTS
VISUALIZATION
TOOLS



COMPLETED PROJECT



I-70 MOUNTAIN CORRIDOR, CSS PROCESS



MAY 29, 2009

DESIGN SEGMENTS ORGANIZE THE AESTHETIC GUIDANCE EFFORT

1. BOUNDARIES OF DESIGN SEGMENTS ARE THE ORGANIZATION FOR WORKING TOGETHER RATHER THAN ARBITRARY POLITICAL COUNTY LINES.
2. EACH DESIGN SEGMENT WILL HAVE DESIGN CHARACTER AND GUIDANCE THAT REINFORCES THE IDENTITY OF THE SEGMENT.
3. DISTINCTIONS WILL BE A PART OF THE DESIGN SEGMENTS.



DESIGN SEGMENTS

I-70 MOUNTAIN CORRIDOR, CSS PROCESS



MAY 29, 2009

DESIGN ISSUES FROM PARTICIPANTS AND 'HOT SPOT' PRIORITIES

■ ISSUES FROM OCTOBER

- STREAM CORRIDORS
- GRADING OF EMBANKMENTS
- FUNCTIONAL SPACE NEXT TO EXISTING TOWNS
- LIGHT ON THE LANDSCAPE
- LIMITS OF DISTURBED AREAS
- FUNCTIONALLY APPROPRIATE AND SAFE
- RECLAIM AND RESTORE EXISTING DAMAGE

■ IDENTIFICATION OF KEY LOCATIONS AND SPECIFIC ISSUES

- CLEAR CREEK RIPARIAN CORRIDOR
- WESTBOUND FROM EISENHOWER TUNNEL TO SILVERTHORNE CUT AND FILL
- IDAHO SPRINGS, GEORGETOWN, SILVER PLUME....
- SOUND PROTECTION IN EXISTING COMMUNITIES (I.E. IDAHO SPRINGS, SILVERTHORNE, VAIL)



I-70 MOUNTAIN CORRIDOR, CSS PROCESS



MAY 29, 2009

WORKING GROUP WILL PARTICIPATE IN SMALL GROUPS/BREAKOUTS TO PROVIDE INPUT:

- REVIEW OF CORRIDOR TEAM WORKSHOP
 - WHAT WAS ACCOMPLISHED
 - PRODUCTS DEVELOPED
- DISCUSS DESIGN SEGMENTS
- DISCUSS KEY LOCATIONS AND SPECIFIC ISSUES
- LOGISTICS OF WORKING GROUPS:
 - FACILITATORS TO ASSIST THE GROUPS
 - RECORDING INFORMATION
 - ONE HOUR 45 MINUTES



WORKING GROUP INPUT

I-70 MOUNTAIN CORRIDOR, CSS PROCESS

