

# I70 Exit 203 and EB Aux Lane Feasibility Study

Public Meeting  
20 February 2019

# Agenda

- Introductions
- Meeting Purpose
- Project Critical Success Factors
- Review of Work to Date
- Project Schedule
- Next Steps

# Meeting Purpose



# I-70 Programmatic Environmental Impact Statement (PEIS)

- Includes reference to improvements on eastbound I-70 between Frisco and Silverthorne



# Where are we in CSS Process?



- Developed the Critical Success Factors (Criteria)
- Initial Alternatives Development



# Critical Success Factors

- Address Safety and Capacity of I-70 Corridor
- Improve I-70 Corridor Operations
- Address the I-70 lane balance at EXIT 205



# Critical Success Factors

- Attend to the PEIS
- Consider Local Planning Efforts
- Evaluate SH 9 / Dillon Dam Road Intersection



# Work To Date

- Environmental Overview
- Traffic Operations
- Forecasting Methodology
- Conceptual Design





# Work To Date

## *ENVIRONMENTAL OVERVIEW*

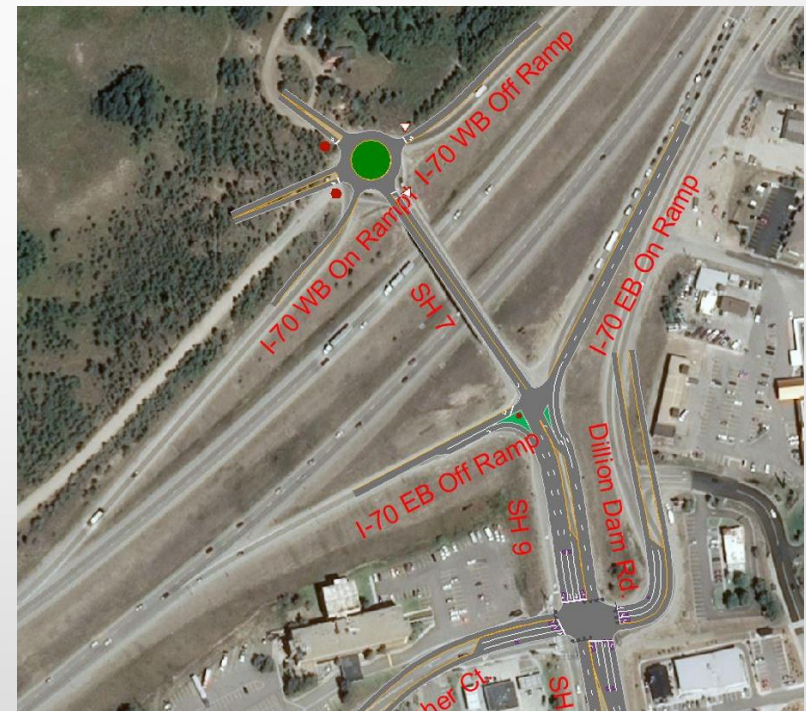
- Biological Resources
- Hazardous Materials
- Historic Resources
- Recreational Resources



# Work To Date

## *OPERATIONS*

- Existing Conditions
  - Safety Assessment
  - I-70 EB / WB
  - Exit 203 Interchange
  - SH 9 / Dillon Dam Road



# Work To Date

## *FORECASTING METHODOLOGY*

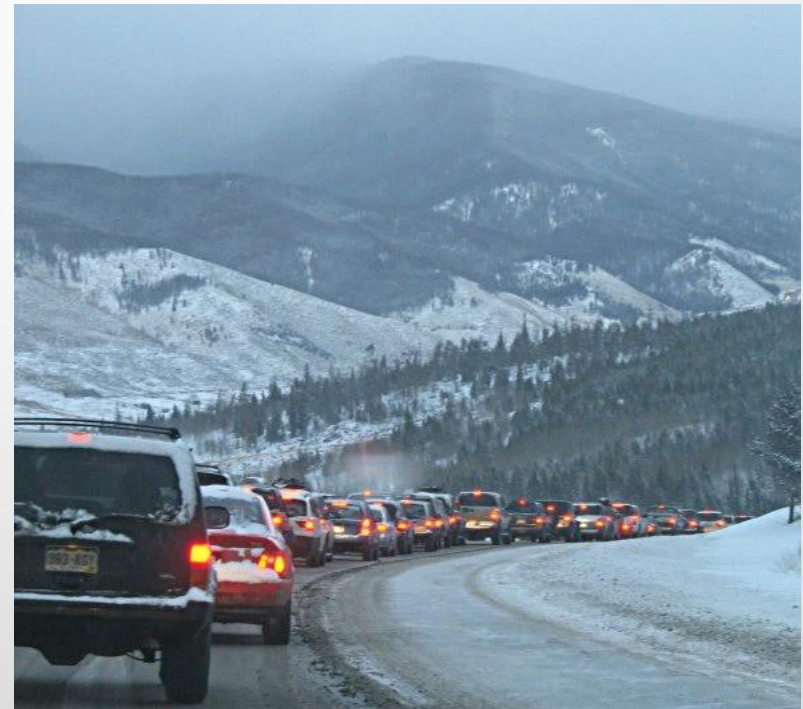
- PEIS
- Local Planning
- Seasonal Adjustments



# Work To Date

## *ROADWAY*

- I-70
  - EB Aux Lane
  - Chain Up
- State Highway 9
  - Exit 203 Interchange
  - Dillon Dam Road





# Project Schedule

Task	JAN	FEB	MAR	APR	MAY	JUN	JUL	AUG	SEP
PLT*	◆	◆		◆		◆			
Public Meeting		◆				◆			
Forecasting	◆ Forecasting methodology memo								
Environmental	◆ Environmental Overview memo					Feasibility Study	◆		
Operations									
Alternatives						Final Concepts Development	◆		
Design Survey									
*Project Leadership Team									

# Next Steps

