

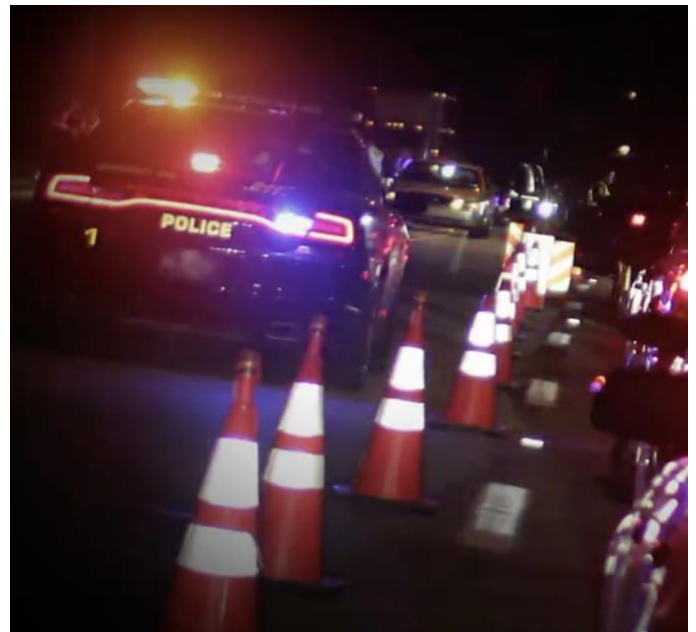
Safety on Central 70

Last year, the State of Colorado continued to see fatal crashes in construction work zones, according to data gathered by the Colorado Department of Transportation. Statewide there were 10 traffic fatalities in construction zones, down from 13 in 2020. Three of the 2021 fatalities occurred in the Denver metro area.

As a reminder, the posted speed limit on I-70 within the Central 70 Project work zone is 55 MPH. Slow down and use caution when driving in work zones. The life saved could be your own.

Remember to Slow for the Cone Zone

- Do not speed in work zones; obey the posted speed limits.
- Stay alert! Expect the unexpected.
- Watch for workers; drive with caution.
- Don't cross solid lines when changing lanes.
- Avoid using mobile devices such as phones while driving in work zones.
- Turn on headlights so that workers and other drivers can see you.
- Be especially alert at night while driving in work zones.
- Expect delays, especially during peak travel times.
- Allow ample space between you and the car in front of you.
- Anticipate lane shifts, and merge when directed to do so.
- Be patient!



Safety During Construction

- Stay away from construction equipment, even if it is not on.
- Be aware of equipment moving in and out of construction zones.
- Don't climb or play on piles of dirt.
- Avoid going near holes in the ground.
- Watch activities from a safe distance.
- Look both ways before crossing the street.
- Be aware of your surroundings.
- Watch for flaggers directing the flow of traffic and pedestrian crossing.
- Don't use a mobile device when crossing the street or near a construction zone.
- Look for signs that are obstructing a crosswalk or state that a sidewalk is closed.
- Hold hands when walking with young children near construction zones.

