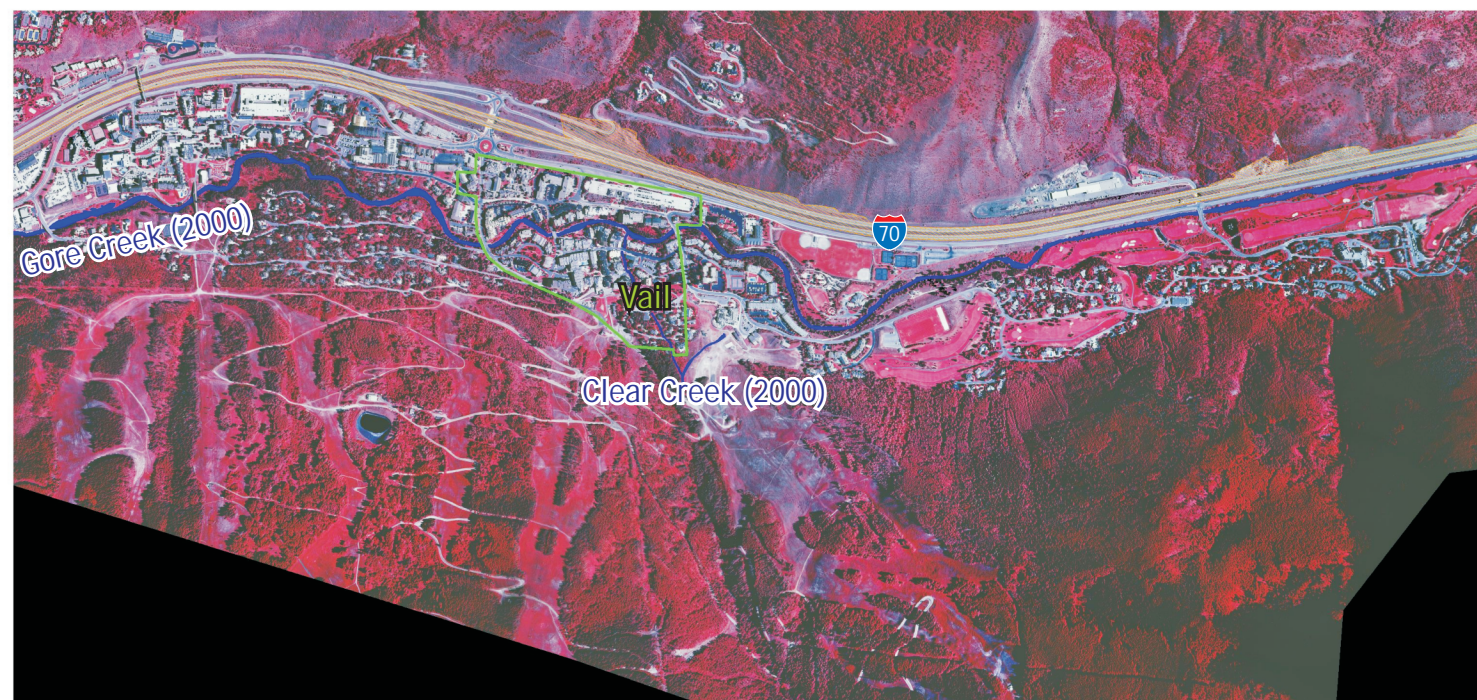


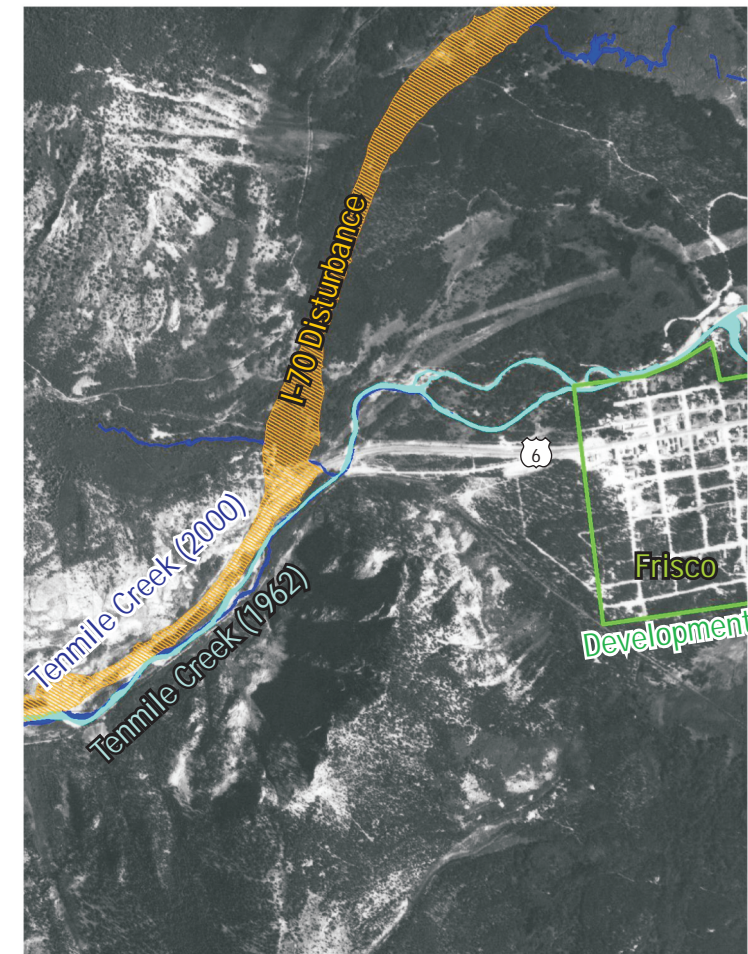
Vail - 1962



Vail - 2000



Frisco - 1962

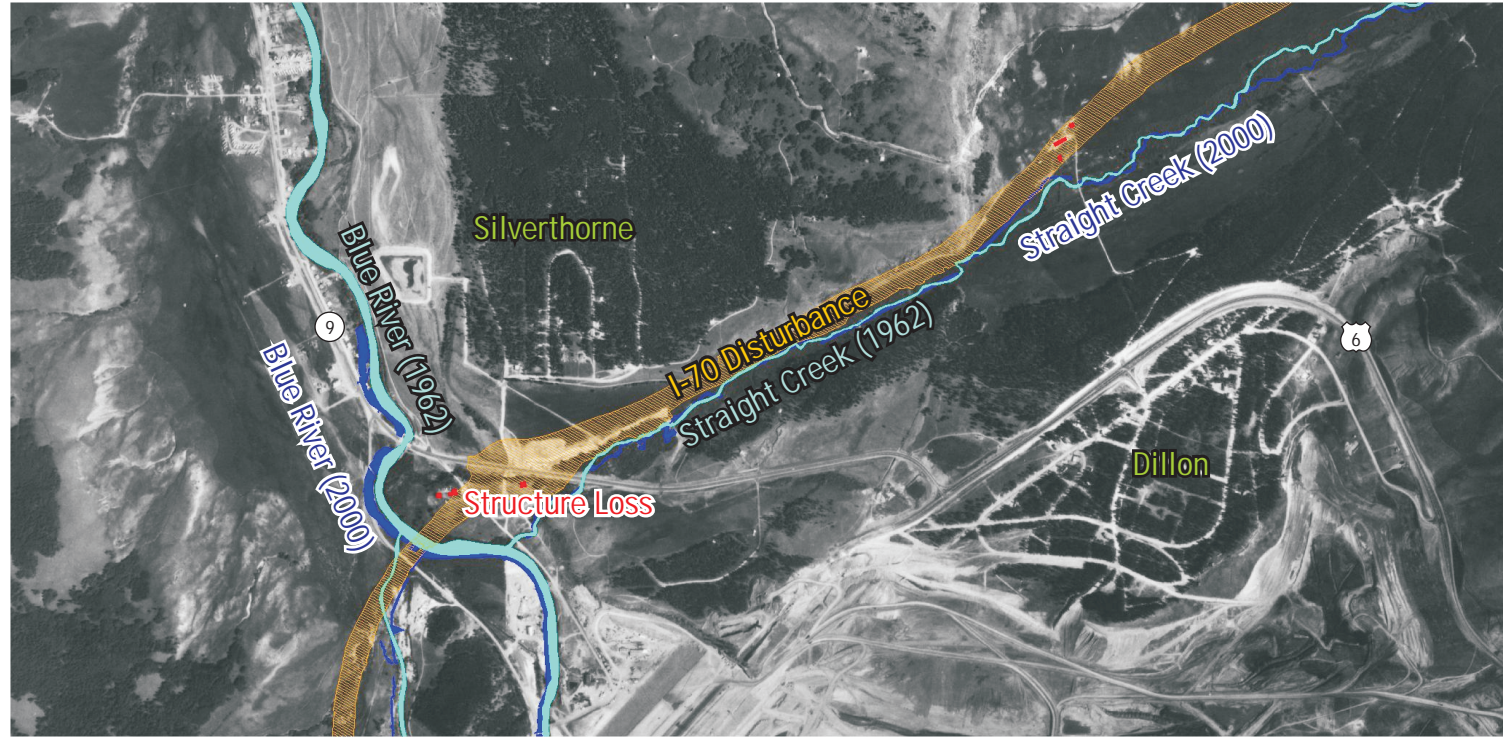


Frisco - 2000



Figure 4-16. Stream Alignment and Development, Pre-I-70 to Present, Vail and Frisco

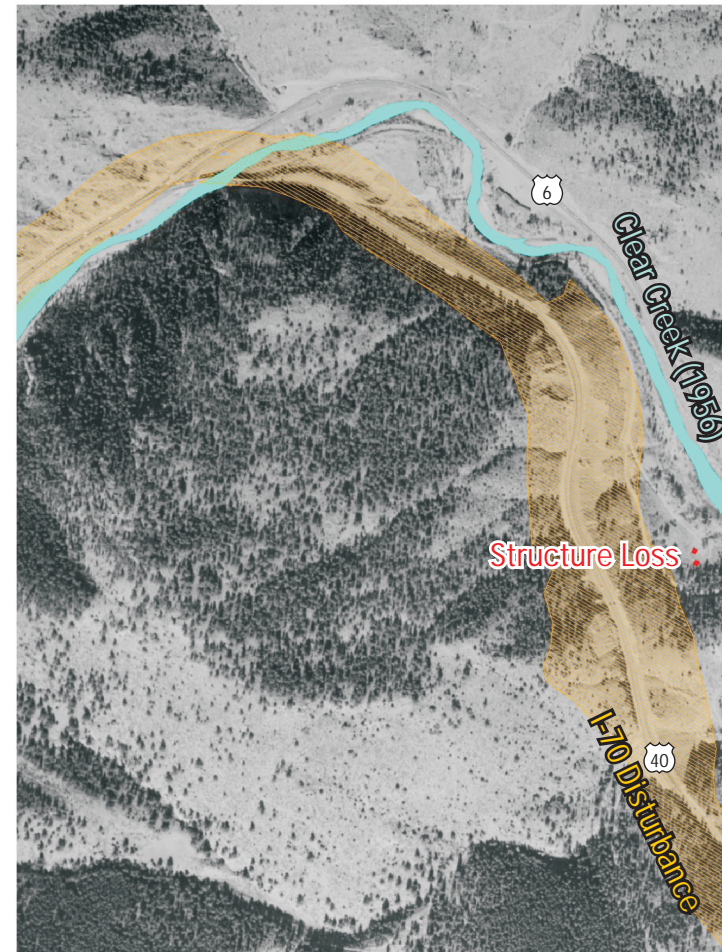
Silverthorne - 1962



Silverthorne - 2000



Floyd Hill - 1962



Floyd Hill - 2000



Figure 4-17. Stream Alignment and Development, Pre-I-70 to Present, Silverthorne and Floyd Hill

Silver Plume - 1957



- Structures Lost Within or Adjacent to I-70 Footprint
- Approximate Location of I-70 Disturbance

Figure 4-18. Stream Alignment and Development Pre-I-70, Silver Plume

Silver Plume - 2000



Structures Lost Within or Adjacent to I-70 Footprint
Approximate Location of I-70 Disturbance

Figure 4-19. Stream Alignment and Development 2000, Silver Plume

Georgetown - 1957



- Structures Lost Within or Adjacent to I-70 Footprint
- Approximate Location of I-70 Disturbance

Figure 4-20. Stream Alignment and Development Pre-I-70, Georgetown

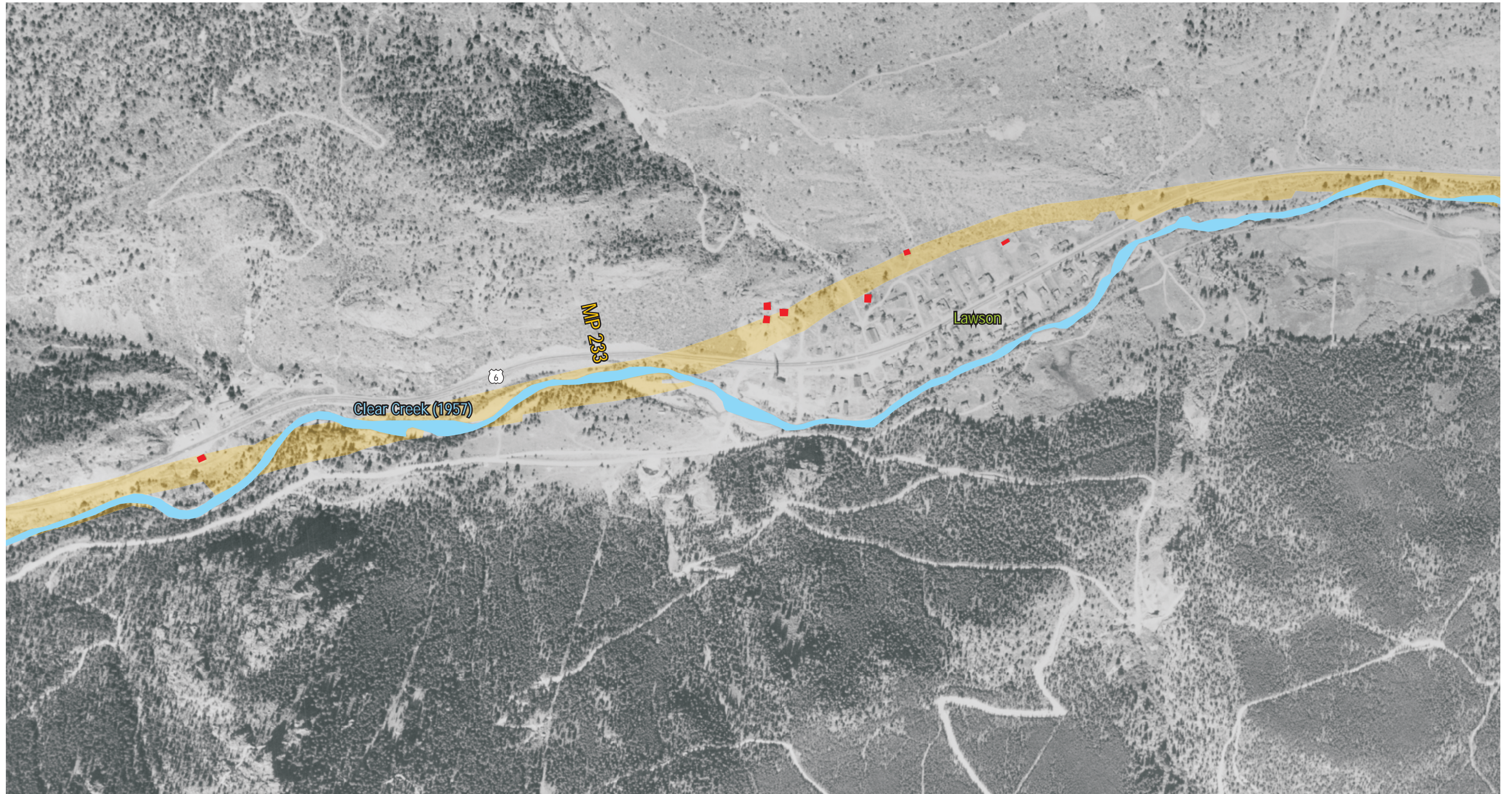
Georgetown - 2000



Structures Lost Within or Adjacent to I-70 Footprint
Approximate Location of I-70 Disturbance

Figure 4-21. Stream Alignment and Development 2000, Georgetown

Lawson - 1957




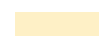
-  Structures Lost Within or Adjacent to I-70 Footprint
-  Approximate Location of I-70 Disturbance

Figure 4-22. Stream Alignment and Development Pre-I-70, Lawson

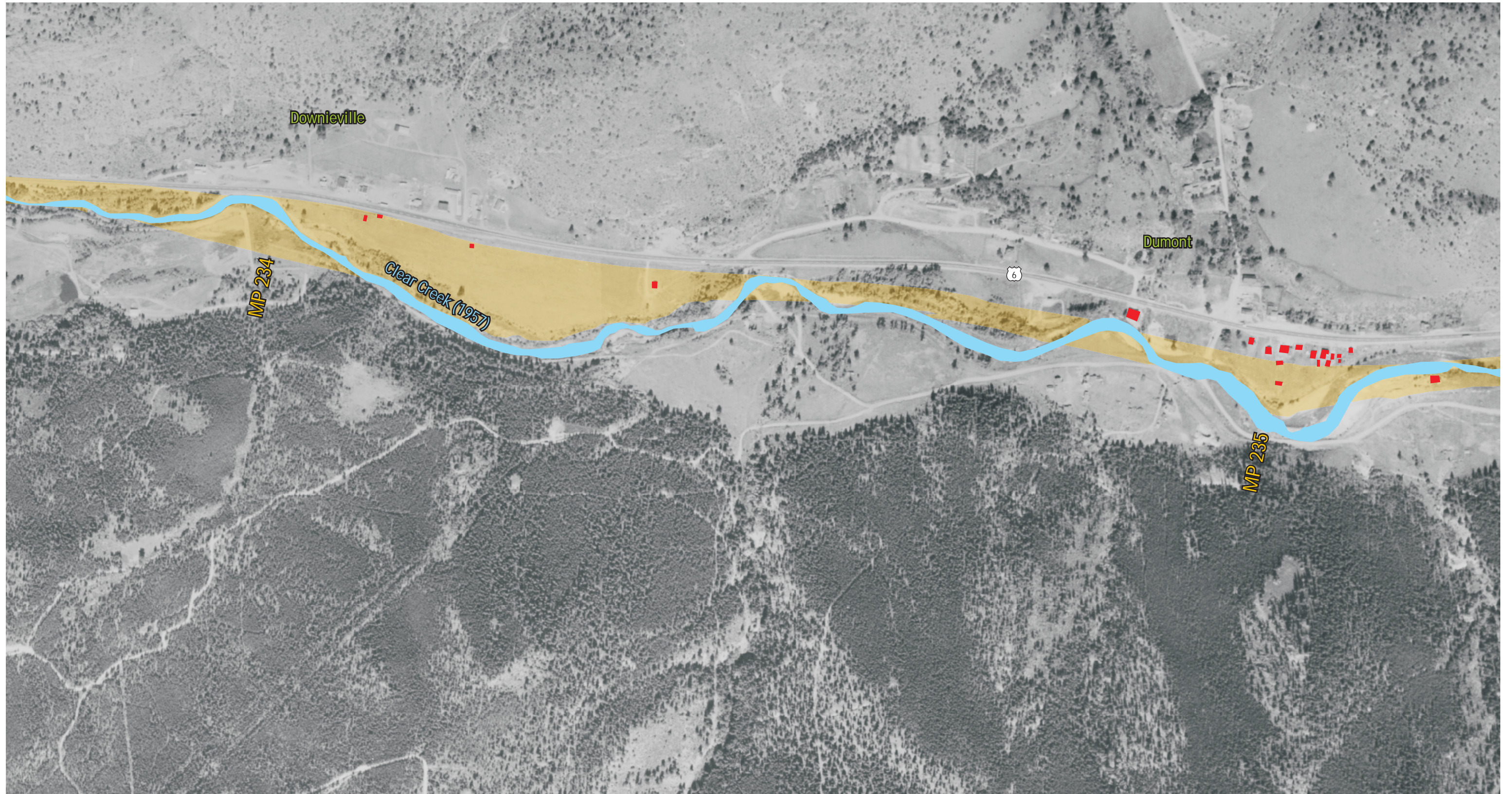
Lawson - 2000



Structures Lost Within or Adjacent to I-70 Footprint
Approximate Location of I-70 Disturbance

Figure 4-23. Stream Alignment and Development 2000, Lawson

Downieville - 1957



- Structures Lost Within or Adjacent to I-70 Footprint
- Approximate Location of I-70 Disturbance

Figure 4-24. Stream Alignment and Development Pre-I-70, Downieville

Downieville - 2000



- Structures Lost Within or Adjacent to I-70 Footprint
- Approximate Location of I-70 Disturbance

Figure 4-25. Stream Alignment and Development 2000, Downieville

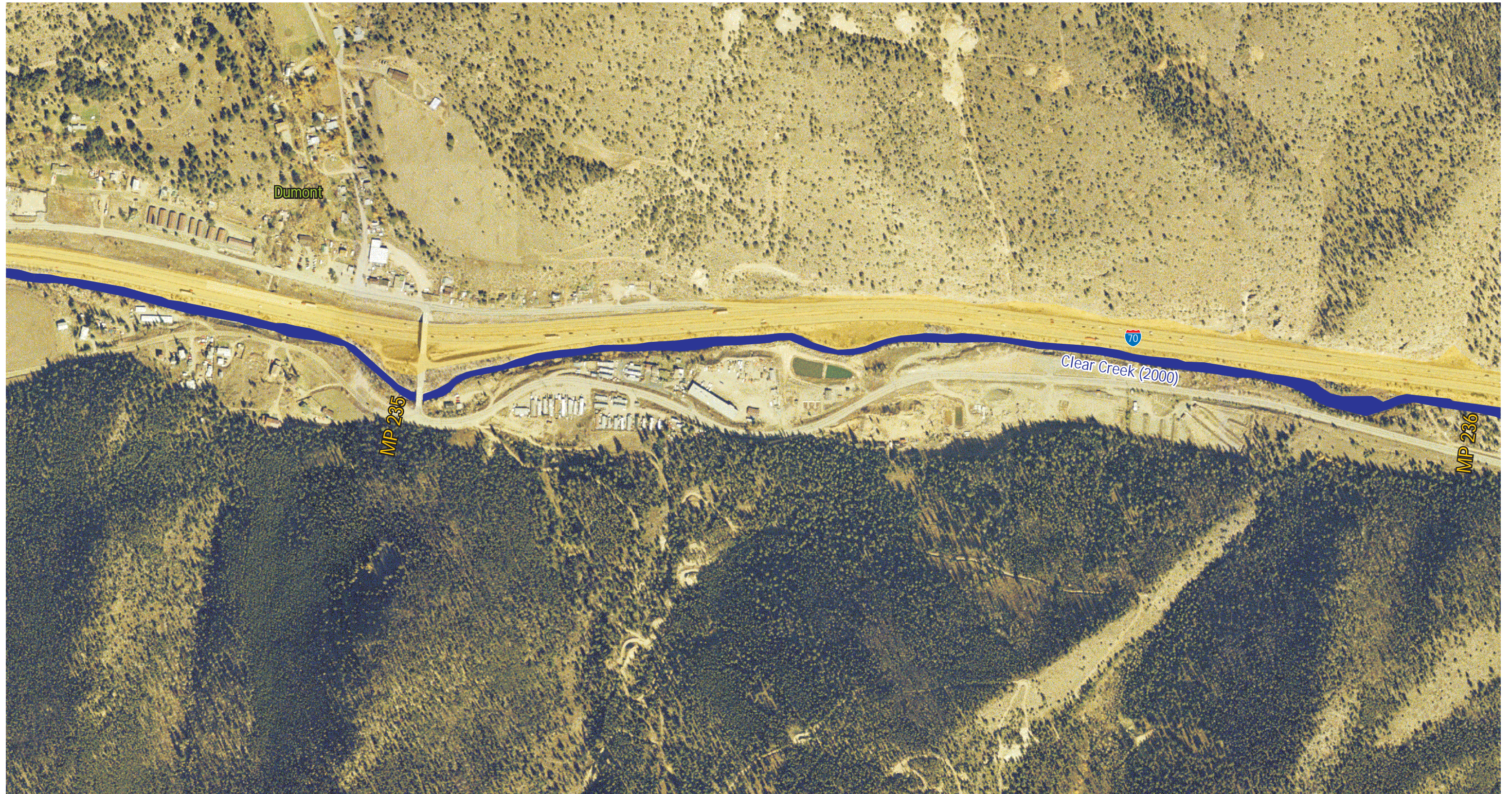
Dumont - 1957



- Structures Lost Within or Adjacent to I-70 Footprint
- Approximate Location of I-70 Disturbance

Figure 4-26. Stream Alignment and Development Pre-I-70, Dumont

Dumont - 2000





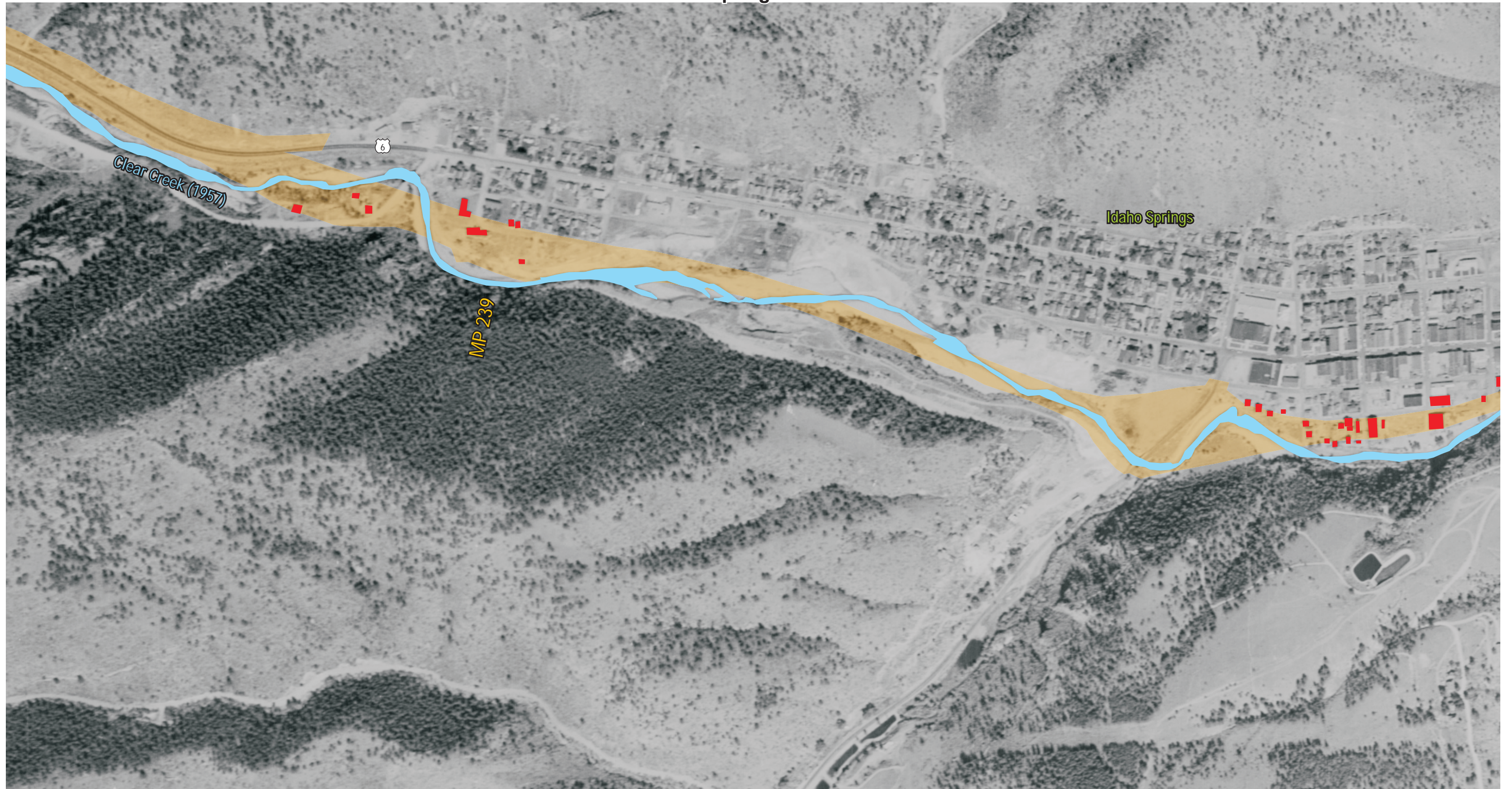
 Structures Lost Within or Adjacent to I-70 Footprint
 Approximate Location of I-70 Disturbance

Figure 4-27. Stream Alignment and Development 2000, Dumont

Idaho Springs - 1957



- Structures Lost Within or Adjacent to I-70 Footprint
- Approximate Location of I-70 Disturbance

Figure 4-28. Stream Alignment and Development Pre-I-70, West Idaho Springs

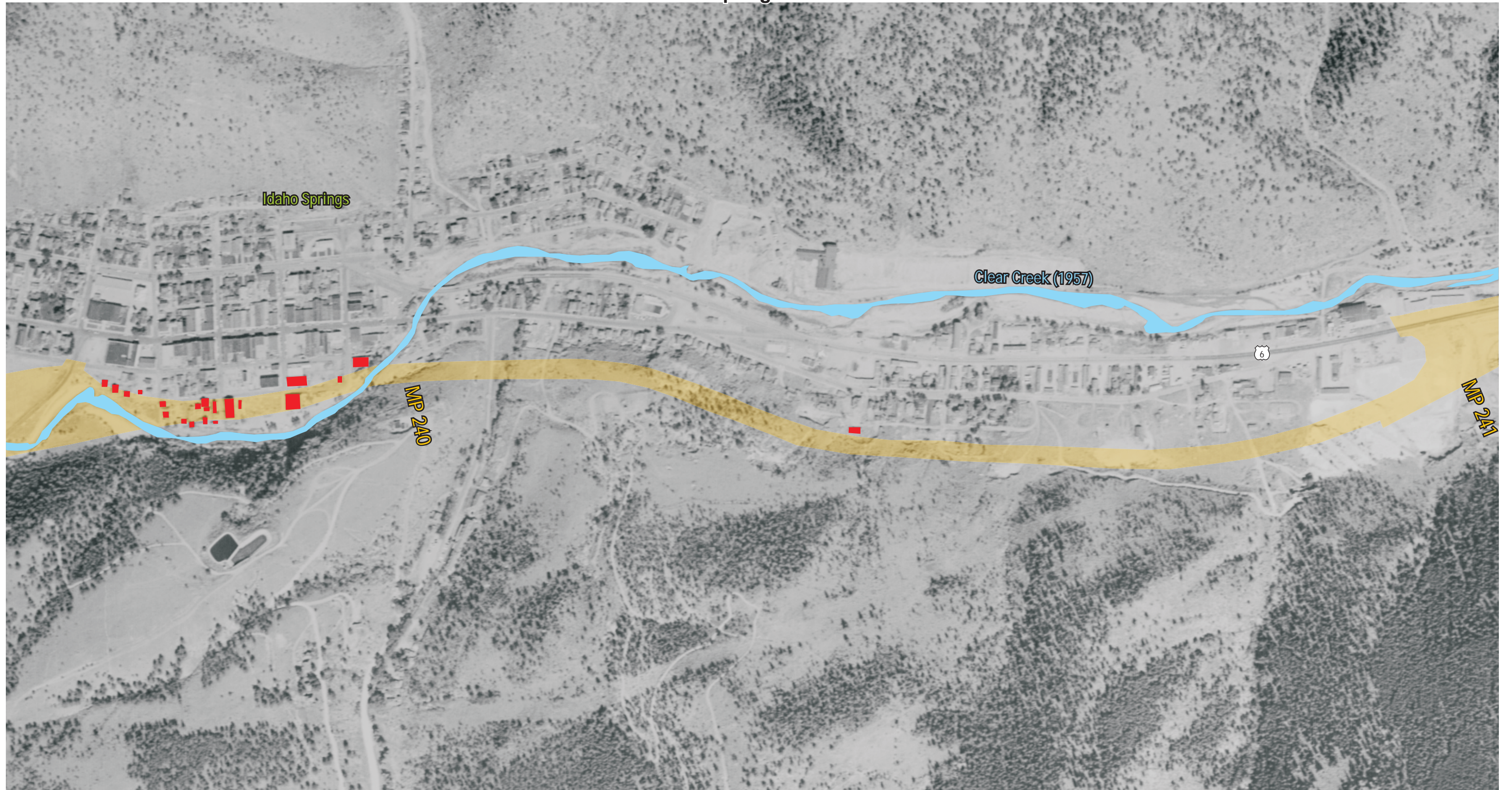
Idaho Springs - 2000



- Structures Lost Within or Adjacent to I-70 Footprint
- Approximate Location of I-70 Disturbance

Figure 4-29. Stream Alignment and Development 2000, West Idaho Springs

Idaho Springs - 1957



- Structures Lost Within or Adjacent to I-70 Footprint
- Approximate Location of I-70 Disturbance

Figure 4-30. Stream Alignment and Development Pre-I-70, East Idaho Springs

Idaho Springs - 1957



- Structures Lost Within or Adjacent to I-70 Footprint
- Approximate Location of I-70 Disturbance

Figure 4-31. Stream Alignment and Development 2000, East Idaho Springs