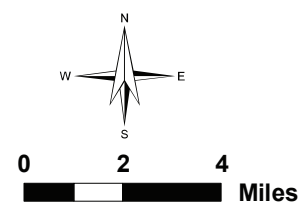


Total Phosphorous (Lbs/Acre)

- 0 - 0.149
- 0.15 - 0.249
- 0.25 - 0.349
- 0.35 - 0.449
- >= 0.45

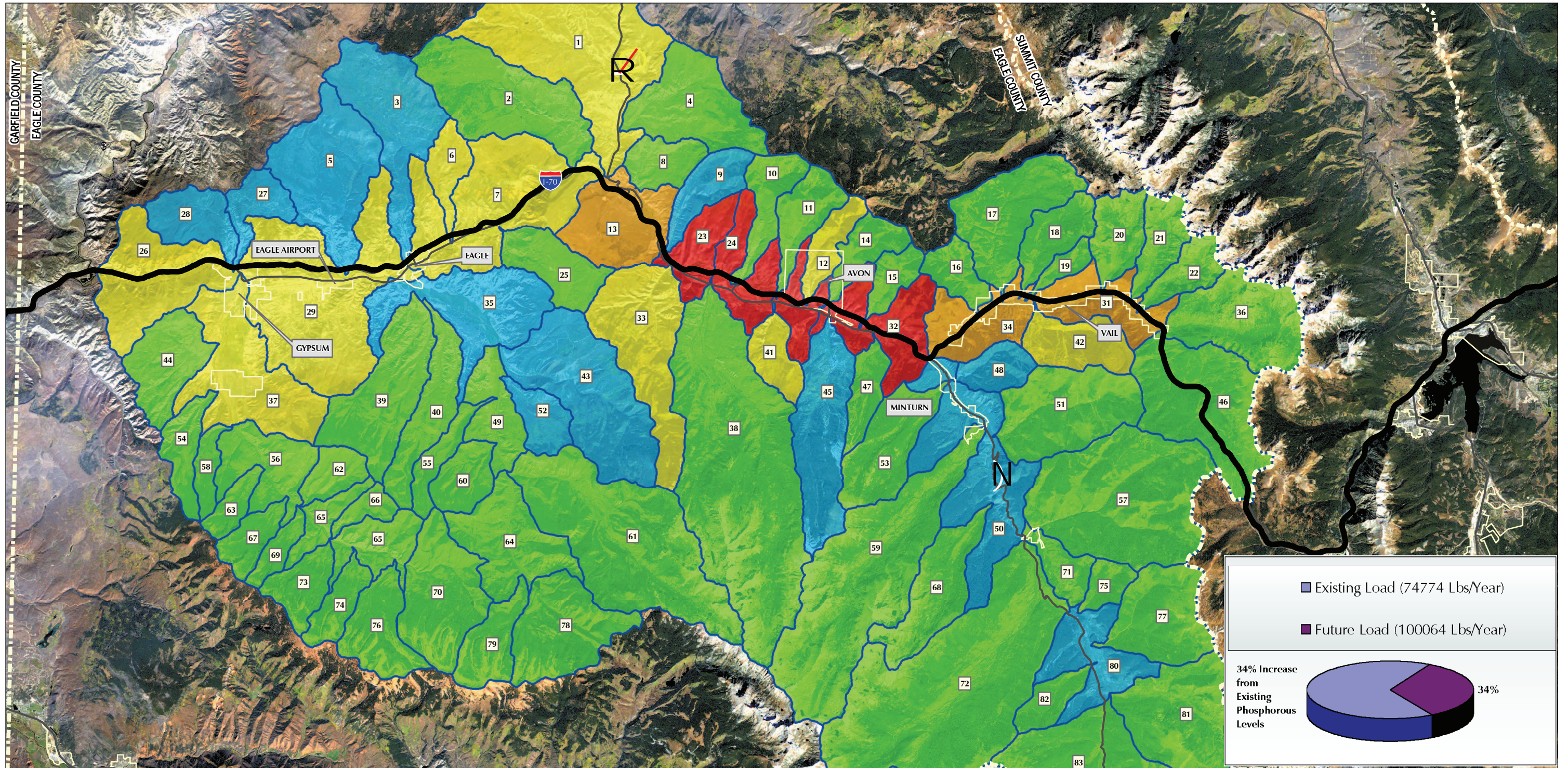
General Features

- USFS HUC6 Watershed Boundaries
- County Boundaries
- State & Federal Highways



SCALE - 1:246,000 or 1" = 20,500'

Figure 4-10. Total Phosphorous Load from Existing Land Use Values through Eagle River Analysis Area

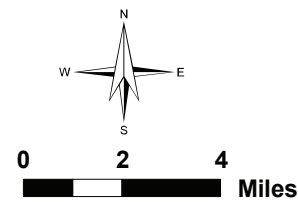


Total Phosphorous (Lbs/Acre)

- 0 - 0.149
- 0.15 - 0.249
- 0.25 - 0.349
- 0.35 - 0.449
- >= 0.45

General Features

- USFS HUC6 Watershed Boundaries
- County Boundaries
- State & Federal Highways



SCALE - 1:246,000 or 1" = 20,500'

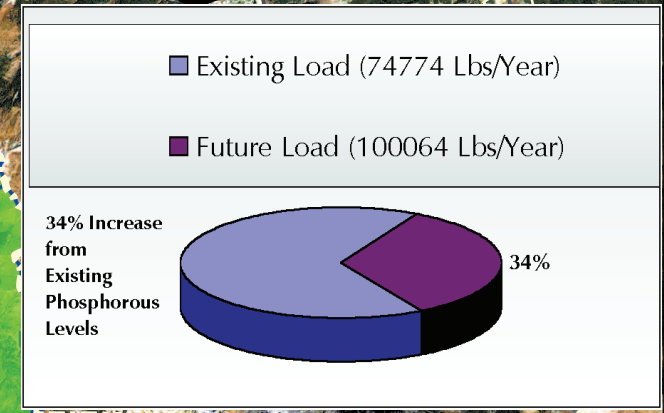
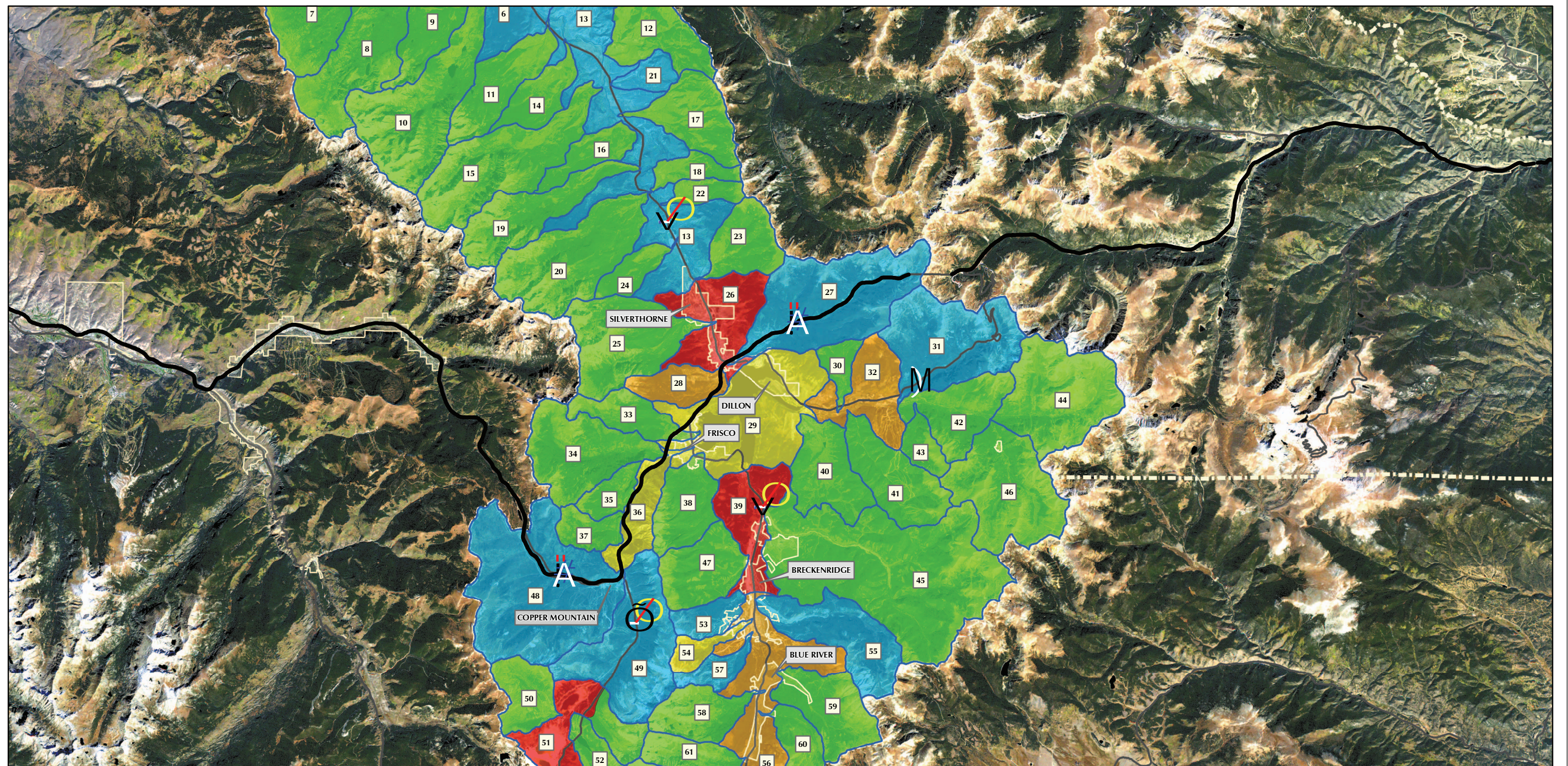


Figure 4-11. Total Phosphorous Load from Future Land Use Values through Eagle River Analysis Area

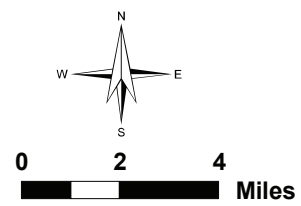


Total Phosphorous (Lbs/Acre)

- 0 - 0.149
- 0.15 - 0.249
- 0.25 - 0.349
- 0.35 - 0.449
- >= 0.45

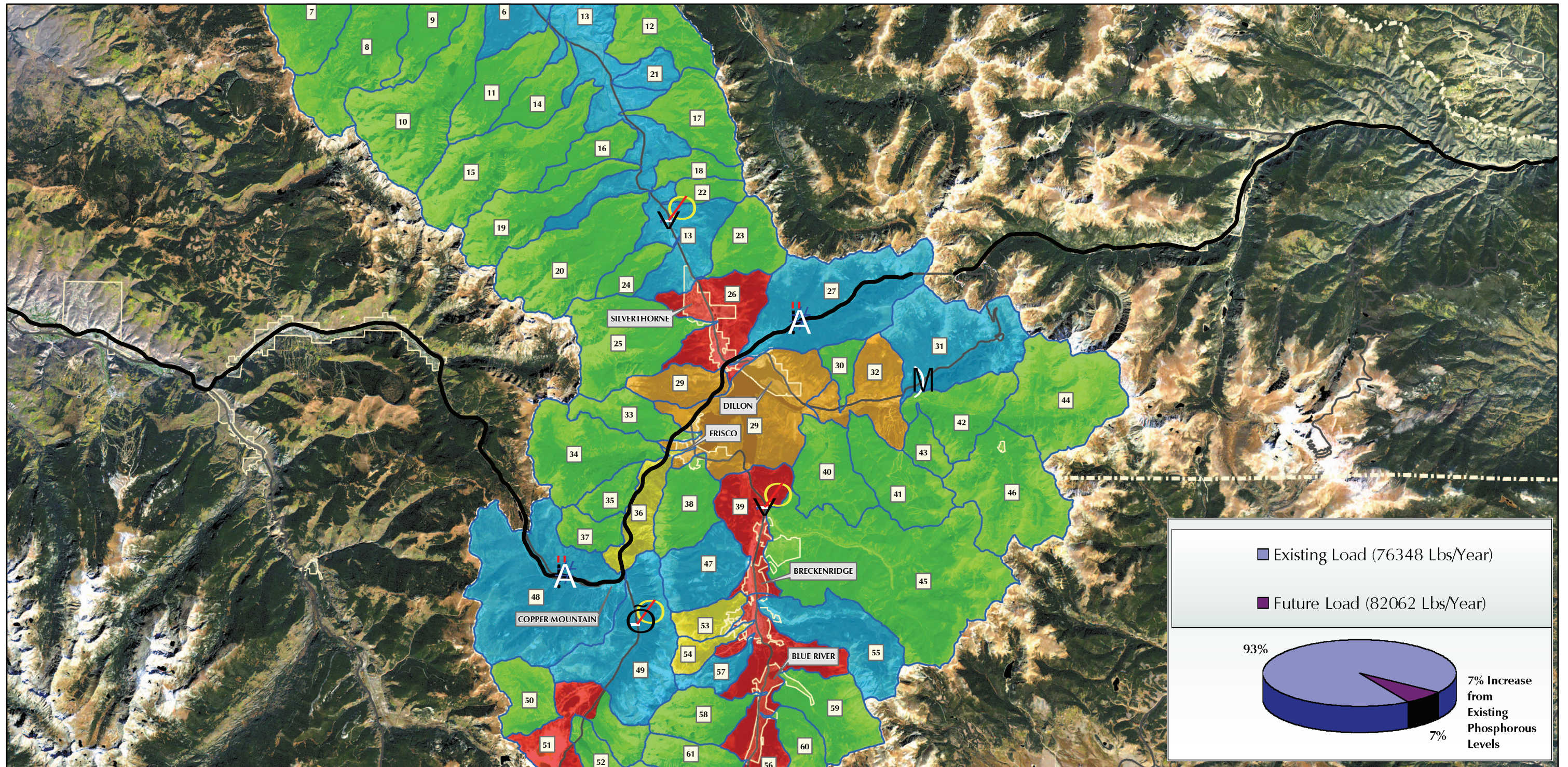
General Features

- USFS HUC6 Watershed Boundaries
- County Boundaries
- State & Federal Highways



SCALE - 1:246,000 or 1" = 20,500'

Figure 4-12. Total Phosphorous Load from Existing Land Use Values through Blue River Analysis Area

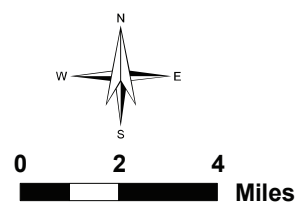


Total Phosphorous (Lbs/Acre)

- 0 - 0.149
- 0.15 - 0.249
- 0.25 - 0.349
- 0.35 - 0.449
- >= 0.45

General Features

- USFS HUC6 Watershed Boundaries
- County Boundaries
- State & Federal Highways



Existing Load (76348 Lbs/Year)

Future Load (82062 Lbs/Year)

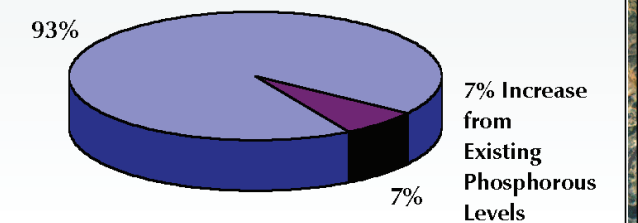
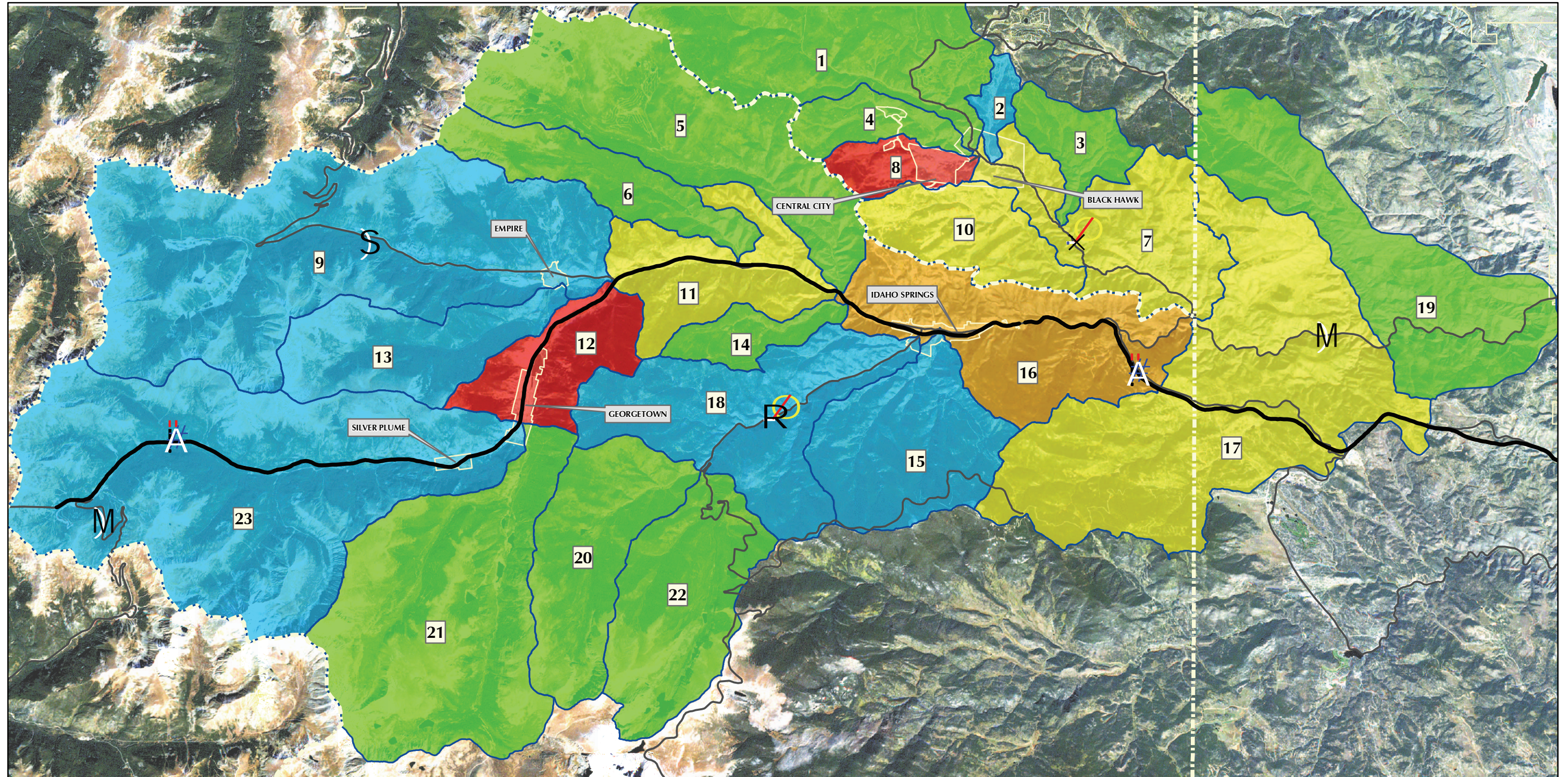


Figure 4-13. Total Phosphorous Load from Future Land Use Values through Blue River Analysis Area

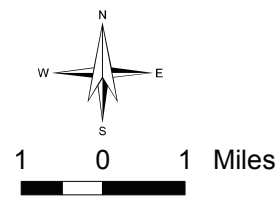


Total Phosphorous (Lbs/Acre)

- 0 - 0.149
- 0.15 - 0.249
- 0.25 - 0.349
- 0.35 - 0.449
- ≥ 0.45

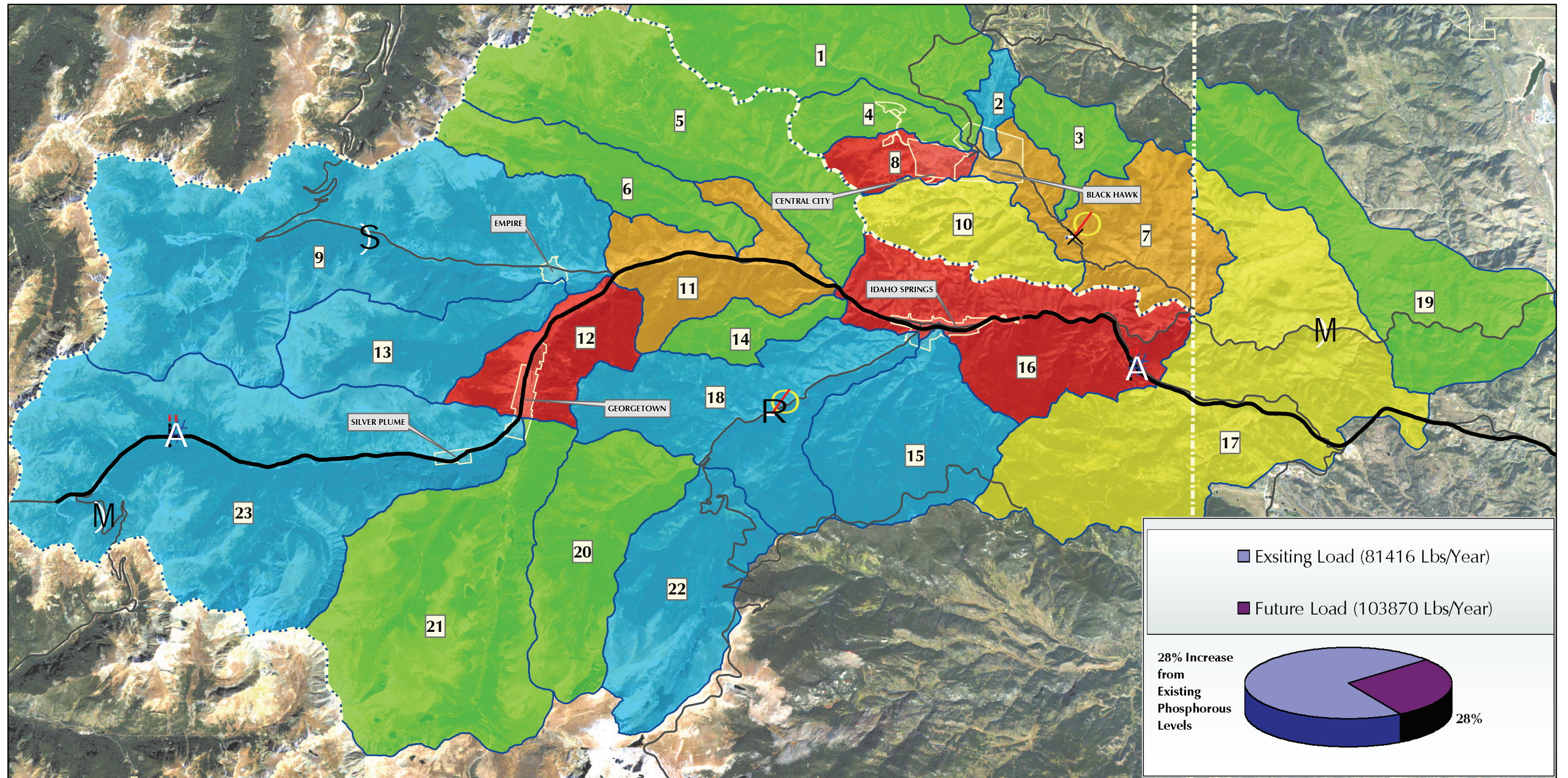
General Features

- USFS HUC6 Watershed Boundaries
- County Boundaries
- State & Federal Highways



SCALE - 1:150,000 or 1" = 12,500'

Figure 4-14. Total Phosphorous Load from Existing Land Use Values through Clear Creek Analysis Area

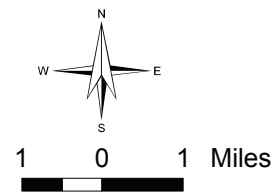


Total Phosphorous (Lbs/Acre)

- 0 - 0.149
- 0.15 - 0.249
- 0.25 - 0.349
- 0.35 - 0.449
- >= 0.45

General Features

- USFS HUC6 Watershed Boundaries
- County Boundaries
- State & Federal Highways



SCALE - 1:150,000 or 1" = 12,500'

Figure 4-15. Total Phosphorous Load from Future Land Use Values through Clear Creek Analysis Area