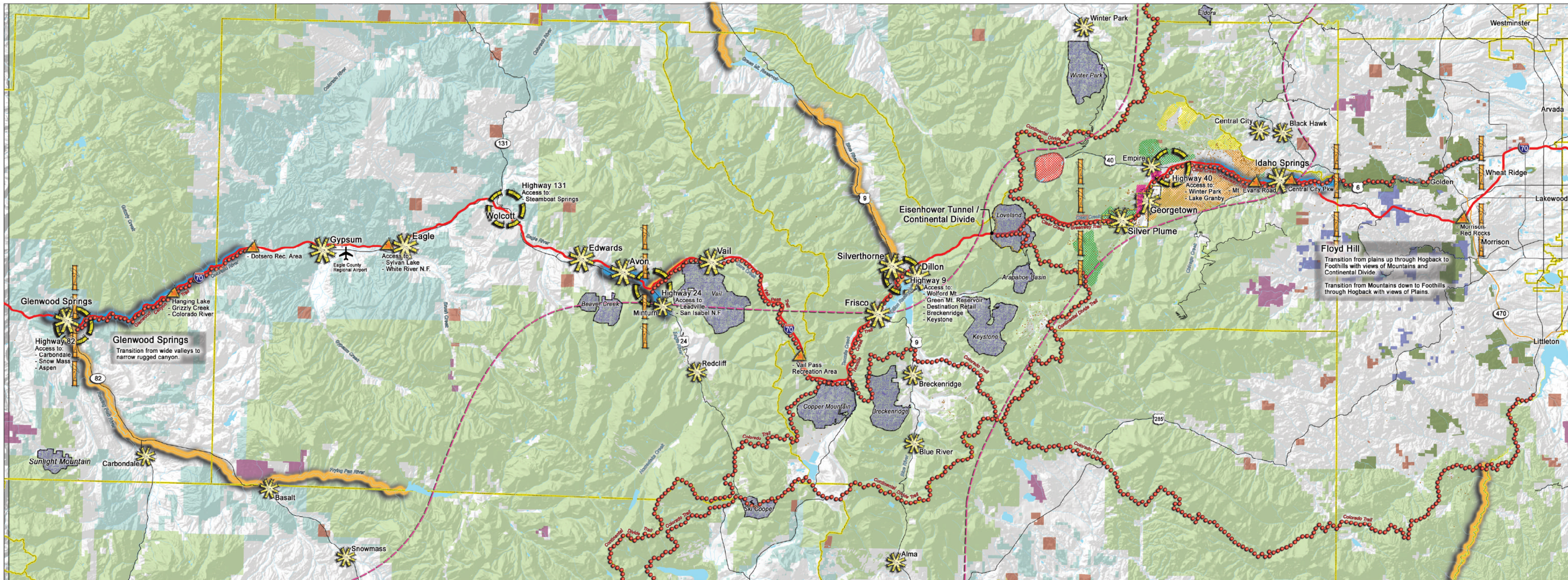


WESTERN SLOPE CANYONS & PLATEAU

CREST OF THE ROCKY MOUNTAINS

MOUNTAIN MINERAL BELT FRONT RANGE FOOTHILLS



I-70 FUNCTIONAL CONTEXT

LEGEND

- Mine
- Rivers
- Lakes
- Cities
- Counties
- Mineral Belt
- Georgetown & Silver Plume Hist. District.
- Highways
 - State Highways
 - E-470
 - Interstate 70
- Mining Districts
 - Gravel Mining
 - Mining & Historic Mining District
 - Mining & Open Space Rec.
 - Mining & Redevelopment
 - Mining & Residential
- Public Lands
 - Bureau of Land Management
 - State of Colorado
 - US Forest Service
 - Colorado Mountain Parks
 - Jefferson County Open Space
- Colorado Division of Wildlife
 - State Wildlife Areas
 - Open to Public Per CDOW Ch. 9 Regulations
 - Big Horn Sheep Areas
- Design Segments
- Regional Gateway
- Regional Recreation Destinations
- Ski Area
- Gold Medal Water
- White Water Rafting
- Regional Trails

