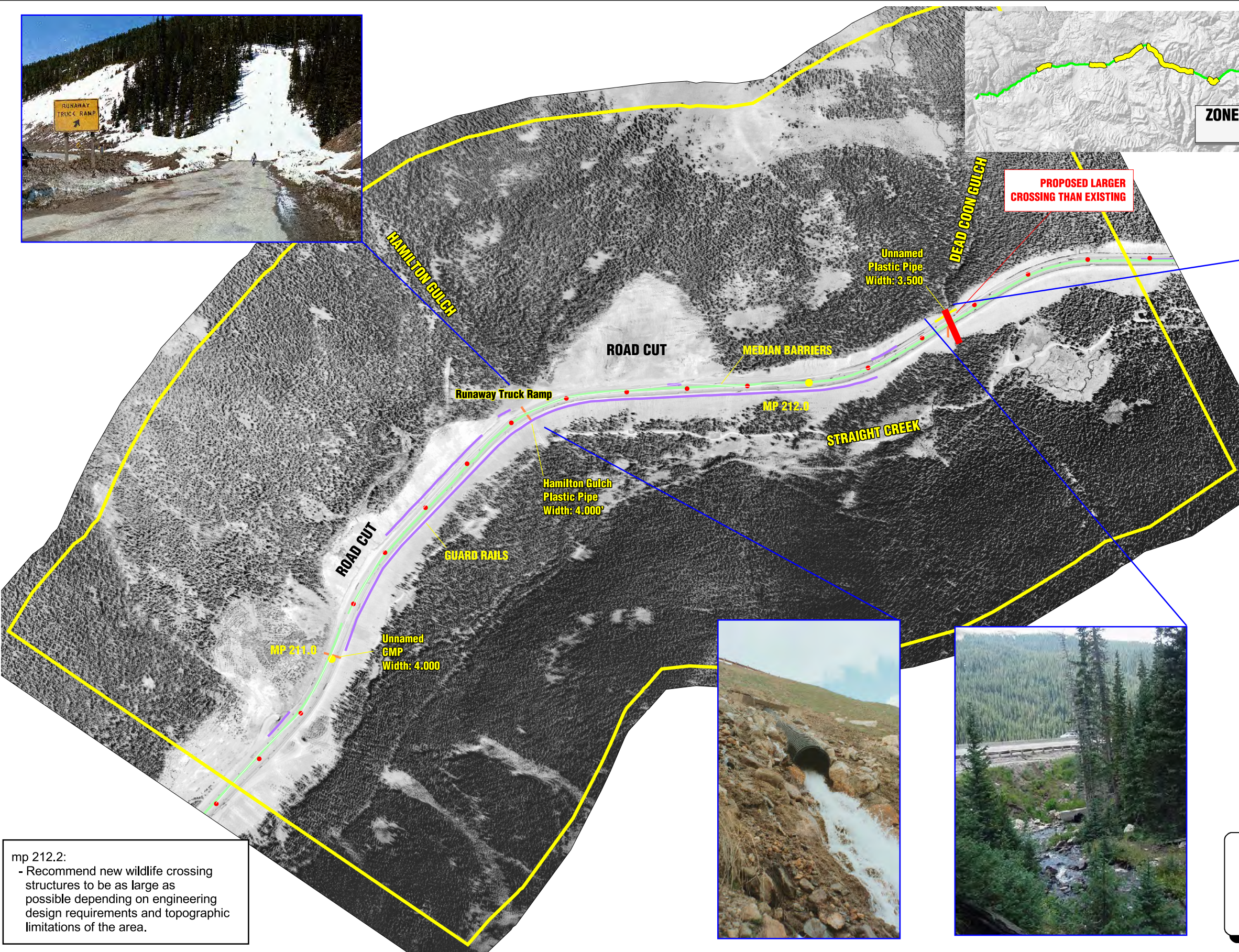
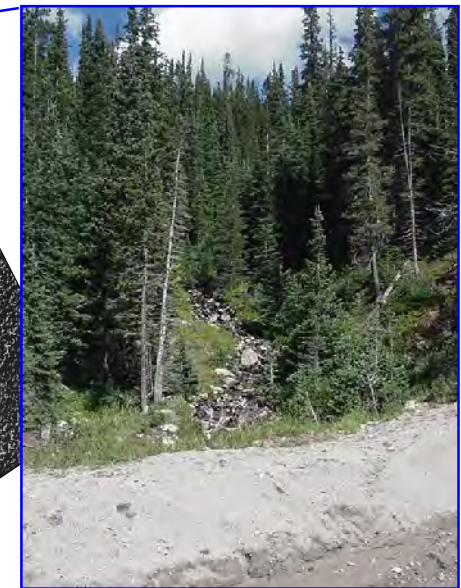
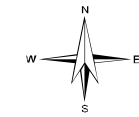


**ZONE 9B: HAMILTON GULCH/  
DEAD COON GULCH**



**PROPOSED LARGER  
CROSSING THAN EXISTING**

Unnamed  
Plastic Pipe  
Width: 3.500'

Hamilton Gulch  
Plastic Pipe  
Width: 4.000'

Unnamed  
GMP  
Width: 4.000'

mp 212.2:  
- Recommend new wildlife crossing structures to be as large as possible depending on engineering design requirements and topographic limitations of the area.



500 0 500 Feet

SCALE - 1:10,500 or 1" = 875'

**General Features**

- Bridges, Culverts & Drainages
- I-70 Mile Posts
- ▮ I-70 Shoulder Barriers
- ▮ I-70 Median Barriers

**I-70 Mountain Corridor PEIS**  
Linkage Interference Zone 9b:  
Hamilton Gulch / Dead Coon Gulch  
**Figure 15**