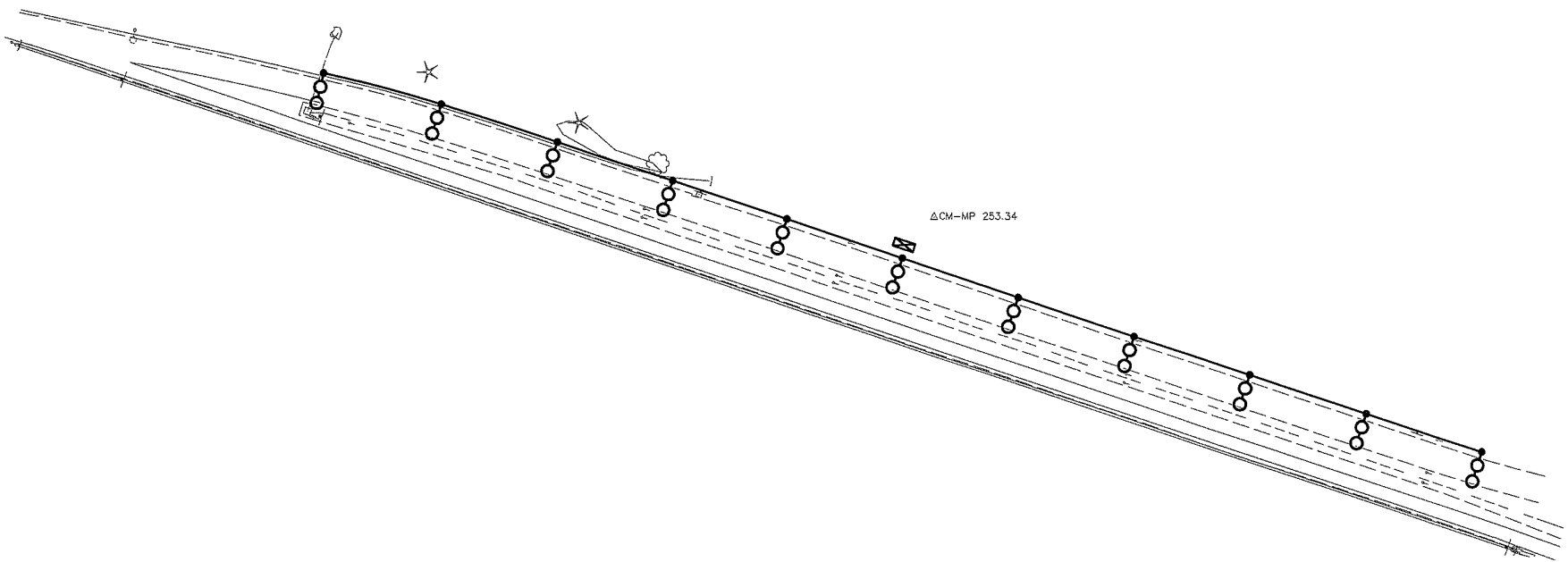


ΔCM-MP 253.17

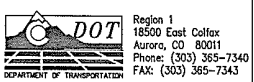


ΔCM-MP 253.34

**CLANTON & ASSOCIATES** LIGHTING DESIGN AND ENGINEERING  
 4699 N. JEWELL COURT, SUITE 107  
 DENVER, CO 80221  
 303-437-7128

Computer File Information	
Creation Date:	Initials: GF
Last Modification Date:	Initials: JE
Full Path: Z:\VAIL CHAIN STATIONS\CURRNET\	
Drawing File Name:	
Scale: REFER TO BAR SCALE	Units: ENGLISH

Index of Revisions	



REGION I DW



As Constructed	
No. Revisions:	
Revised:	
Void:	

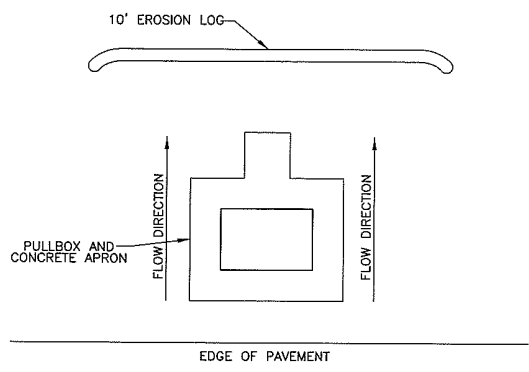
LIGHTING PLAN - MP 253 PLAN & SWMP SITE MAP		
Designer:	GF	Structure
Detailer:	JE	Numbers
Sheet Subset:	LE	Subset Sheets: 24 OF 24

Project No./Code	
IM 070A-003	
16701	
Sheet Number:	45

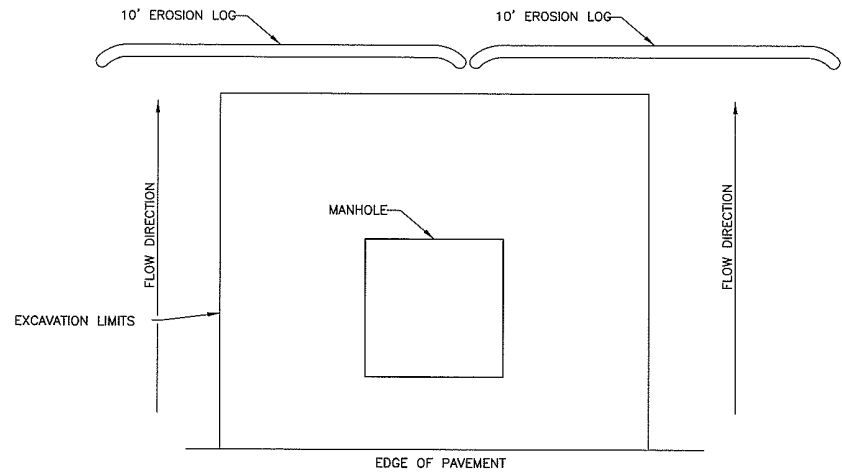
**PRELIMINARY**  
SUBJECT TO REVISION



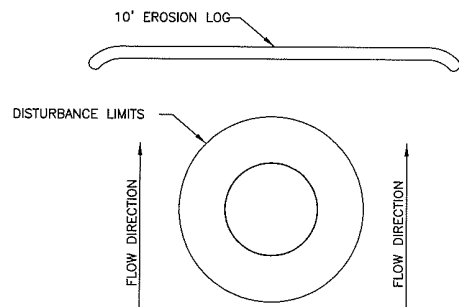




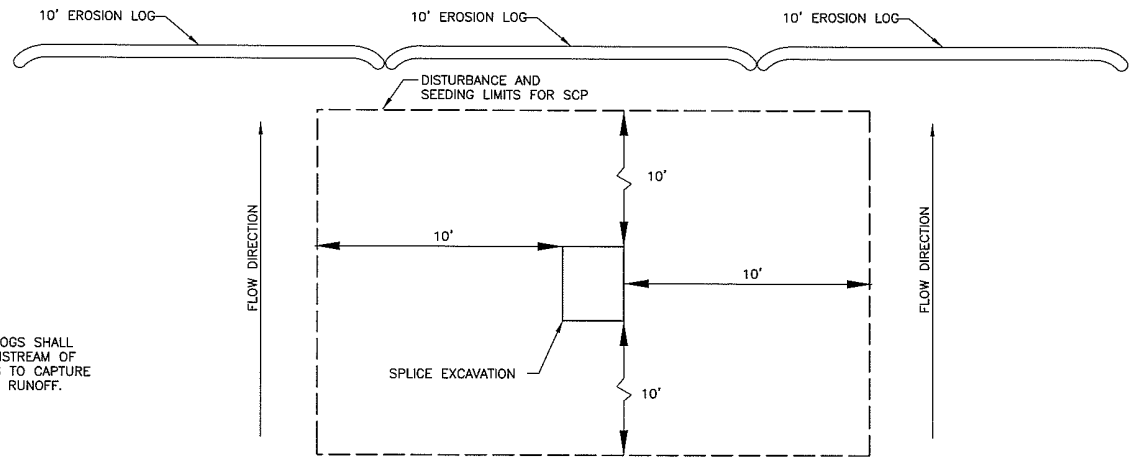
PULLBOX



MANHOLE





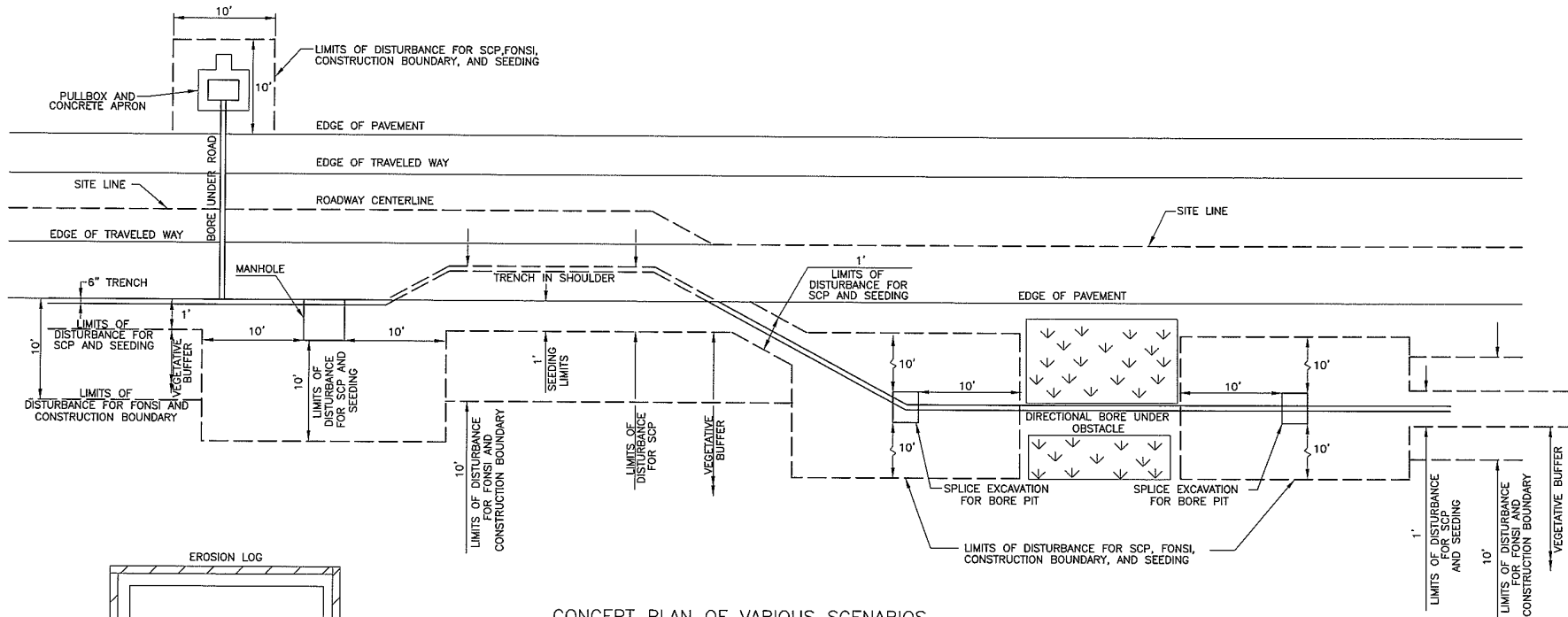
LIGHT FOUNDATION



BORING SPlice EXCAVATION

NOTE: EROSION LOGS SHALL BE PLACED DOWNSTREAM OF DISTURBED AREAS TO CAPTURE ANY SEDIMENT IN RUNOFF.

Computer File Information		Index of Revisions		 Region 1 18500 East Colfax Aurora, CO 80011 Phone: (303) 365-7340 FAX: (303) 365-7343		 4601 DTC Blvd. Suite 700 Denver, CO 80237 Phone: (303) 221-7275 Fax: (303) 221-7276		As Constructed		STORMWATER MANAGEMENT PLAN EROSION LOG DETAIL		Project No./Code	
Creation Date: 02/18/08	Initials: SRB					No. Revisions:							IM 070A-003
Last Modification Date: 02/25/08	Initials: SRB					Revised:	Designer: SRB	Structure					16701
Full Path: S:\Tranproj\100000508\16701\Consultants\Plot_Sets\FIR						Void:	Detailer: SRB	Numbers					
Drawing File Name: swmp03.dgn	Units: ENGLISH						Sheet Subset: swmp02	Subset Sheets:	3 of 5				Sheet Number: 48



CONCEPT PLAN OF VARIOUS SCENARIOS

**NOTES:**  
 SCP = STORMWATER CONSTRUCTION PERMIT  
 FONSI = FINDING OF NO SIGNIFIGANT IMPACT

BORE PIT CONTAINMENT POND

NOTE: WILL BE UPDATED FOR CHAIN STATION PHASE 2

Computer File Information		Index of Revisions		As Constructed		STORMWATER MANAGEMENT PLAN DISTURBANCE AREA		Project No./Code	
Creation Date: 02/18/08	Initials: SRB			No. Revisions:		Designer: SRB	Structure	IM 070A-003	
Last Modification Date: 02/18/08	Initials: SRB			Revised:		Detailer: SRB	Numbers	16701	
Full Path: S:\Tranproj\100000508\16701\Consultants\Plot_Sets\FIR				Void:		Sheet Subset: swmp03	Subset Sheets: 4 of 5	Sheet Number: 49	
Drawing File Name: swmp04.dgn									
Scale: Units: ENGLISH									



REGION I DW



### Culvert Size, Location, and Type



Culvert Size	Culvert Type	M.P. Reference	Sheet Number	Water of the U.S.
10'	Box Culvert	200	306	North Tenmile Creek
24"	CMP	200	305	
18"	CMP	199	299	Tenmile Creek
18"	CMP	199	297	Tenmile Creek
18"	CMP	199	296	Tenmile Creek
24"	Concrete	199	293	Tenmile Creek
(2) 18"	Plastic	199	292	
36"	CMP	196	275	
24"	Concrete	196	273	
24"	CMP	195	267	
18"	CMP	194	261	
18"	CMP	194	260	
18"	CMP	194	258	
12"	CMP	193	257	West Tenmile Creek
12"	CMP	193	256	West Tenmile Creek
18"	CMP	193	255	West Tenmile Creek / Guller Gulch
24"	CMP	193	255	West Tenmile Creek / Guller Gulch
12"	Concrete	193	255	West Tenmile Creek / Guller Gulch
12"	CMP	193	254	West Tenmile Creek
36"	CMP	193	253	West Tenmile Creek
36"	CMP	192	252	West Tenmile Creek
24"	CMP	192	252	West Tenmile Creek
24"	CMP	192	251	
24"	CMP	192	251	
12"	CMP	192	250	West Tenmile Creek / Stafford Creek
12"	Concrete	192	249	West Tenmile Creek
36"	Concrete	192	248	
36"	CMP	191	247	West Tenmile Creek
36"	CMP	191	246	West Tenmile Creek
36"	Concrete	191	244	West Tenmile Creek
18"	Concrete	191	242	
12"	Concrete	191	241	West Tenmile Creek / Wilder Gulch
12"	Concrete	190	241	West Tenmile Creek / Wilder Gulch
12"	CMP	190	237	West Tenmile Creek
12"	Concrete	190	236	
12"	Concrete	190	236	
24"	CMP	190	236	
36"	Plastic	188	224	
12"	Concrete	188	223	
12"	Concrete	188	222	

Culvert Size	Culvert Type	M.P. Reference	Sheet Number	Water of the U.S.
24"	CMP	188	22	
24"	Concrete	188	219	
24"	CMP	187	213	
24"	CMP	187	213	
24"	Concrete	186	212	
12"	Concrete	186	210	
12"	Plastic	185	203	
24"	CMP	185	203	
12"	Concrete	182	181	Gore Creek
12"	Concrete	181	179	
24"	Concrete	181	179	
24"	Concrete	181	178	
12"	Concrete	181	177	
12"	Concrete	181	176	
10'	Box Culvert	180	173	Bighorn Creek
24"	Concrete	180	171	Pitkin Creek
24"	Concrete	179	168	
24"	Concrete	179	166	
18"	Concrete	179	165	Unnamed (M.P. 183)
36"	Concrete	178	164	
24"	Concrete	178	160	
24"	Concrete	177	159	
18"	Concrete	177	158	
18"	CMP	177	157	
24"	Concrete	177	156	
24"	Concrete	177	156	
24"	CMP	176	154	
18"	CMP	176	153	
18"	Concrete	175	150	Middle Creek
18"	Concrete	175	149	
18"	Concrete	175	148	
18"	Concrete	175	147	
18"	Concrete	174	144	
18"	Concrete	174	143	
18"	Concrete	174	142	
30"	Concrete	174	140	
30"	Concrete	173	139	
10'	Box Culvert	173	138	
10'	Box Culvert	173	136	Unnamed (M.P. 175)

**NOTE:**

THIS TABLE SHOWS CULVERT SIZE, TYPE, SHEET REFERENCE AND MILEPOST LOCATIONS. INFORMATION SHOWN IN THE TABLE ABOVE IS APPROXIMATE ONLY.

NOTE: WILL BE UPDATED FOR CHAIN STATION PHASE 2

<b>Computer File Information</b>		<b>Index of Revisions</b>		 <p>Region 1 18500 East Colfax Aurora, CO 80011 Phone: (303) 365-7340 FAX: (303) 365-7343</p> <p>REGION I      DW</p>	 <p>4601 DTC Blvd. Suite 700 Denver, CO 80237 Phone: (303) 221-7275 Fax: (303) 221-7276</p>	<b>As Constructed</b>		<b>STORMWATER MANAGEMENT PLAN CULVERT TABLE</b>		<b>Project No./Code</b>			
Creation Date: 02/18/08	Initials: SRB					No. Revisions:				IM 070A-003			
Last Modification Date: 02/25/08	Initials: SRB					Revised:	Designer: SRB	Structure		16701			
Full Path: S:\tranproj\100000508\16701\Consultants\Plot_Sets\FIR						Void:	Detailer: SRB	Numbers		Sheet Number: 50			
Drawing File Name: swmp05.dgn					Sheet Subset: swmp04	Subset Sheets:	5 of 5						
Scale:	Units: ENGLISH												

d:\pwworkspace\332029\_Plan\_C\01-Proj\Projects\1-70\_Closed\_Up\_Phase\_2\01-16701\_Tab of Engineering Items.dgn

### TABULATION OF TRAFFIC ENGINEERING ITEMS

ITEM NO.	ITEM	UNIT	PROJECT TOTALS
202	REMOVE GROUND SIGN	EACH	2
202	REMOVE SIGN PANEL	EACH	6
614	SIGN PANEL (CLASS II)	SQ FT	357.5
614	STEEL SIGN POST (W6x12)	LIN FT	57
614	STEEL SIGN POST (W8x21)	LIN FT	65
614	STEEL SIGN SUPPORT (2-1/2 INCH ROUND SCH 80)(POST)	LIN FT	294
614	STEEL SIGN SUPPORT (2-1/2 INCH ROUND SCH 80)(SLIPBASE)	EACH	24
614	CONCRETE FOOTING (TY 1)	EACH	4
614	CONCRETE FOOTING (TY 4)	EACH	5
614	BLANKOUT SIGN (FIBER OPTIC)	EACH	5
614	FLASHING BEACON	EACH	4
630	FLAGGING	HOUR	#
630	TRAFFIC CONTROL INSPECTION	DAY	#
630	TRAFFIC CONTROL MANAGEMENT	DAY	#
630	CONST TRAF SIGN (A)	EACH	6
630	CONST TRAF SIGN (B)	EACH	33
630	CONST TRAF SIGN (C)	EACH	26
630	CONST TRAF SIGN (SPECIAL)	SQ FT	94
630	FLASH ARROW PANEL (C TY)	EACH	1
630	PORTABLE MESSAGE SIGN PANEL	EACH	1
630	DRUM CHANNELIZING DEVICE	EACH	50
630	TRAFFIC CONE	EACH	400
630	IMPACT ATTENUATOR (T-M-A)(TEMP)	EACH	1


### SCHEDULE OF CONSTRUCTION TRAFFIC CONTROL DEVICES

SIGNS					
SIGN CODE	LEGEND	DIMENSIONS	PANEL SIZE		
			A	B	C
48W20-1	ROAD/WORK/(DIST)	48"x48"		6	
48W20-7a	FLAGGER SYMBOL	48"x48"		6	
48W20-5( )	( ) LANE/CLOSED/(DIST)	48"x48"		2	
48W4-2( )	( )LANE TRANSITION SYMBOL	48"x48"		2	
48W21-5	SHOULDER/WORK	48"x48"		4	
48W21-5b	___/SHOULDER/CLOSED/(DIST)	48"x48"		4	
48R4-1	DO/NOT/PASS	48"x60"			2
48R4-2	PASS/WITH/CARE	48"x60"			2
48R2-1(45)	SPEED/LIMIT/45	48"x60"			4
48R2-1(55)	SPEED/LIMIT/55	48"x60"			4
48R2-1(65)	SPEED/LIMIT/65	48"x60"			2
48R52-6a	BEGIN/FINES/DOUBLE/IN WORK/ZONE	48"x60"			6
48R52-6b	END/FINES/DOUBLE/IN WORK/ZONE	48"x60"			6
48C20-10	(Company Name)/THANKS YOU/(Tel #)	48"x48"		3	
48C20-5	WORK ZONE	48"x12"	6		
48R2-6	FINES/DOUBLE	48"x48"		6	
<b>SIGN TOTALS</b>			<b>6</b>	<b>33</b>	<b>26</b>
OTHER DEVICES					
ITEM / UNIT		QUANTITY			
DRUM CHANNELIZING DEVICE / EA		50			
TRAFFIC CONE 36" / EA		400			
FLASHING ARROW PANEL (C TY) / EA		1			
PORTABLE MESSAGE SIGN PANEL / EA		1			
IMPACT ATTENUATOR (T-M-A)(TEMP) / EA		1			

CONSTRUCTION TRAFFIC SIGN (SPECIAL)		
LEGEND	DIMENSIONS	SQ. FT.
USE BOTH/LANES DURING/CONGESTIONS	1 - 7'x4'	28.00
USE BOTH/LANES TO/MERGE POINT	4 - 3'x3.5'	42.00
TAKE/TURNS/MERGE/HERE	2 - 3'x4'	24.00
<b>SIGN TOTALS</b>		<b>94.00</b>

**NOTES:**

- SEE S-630-1 OF THE COLORADO STANDARD PLANS FOR BASIC PLACEMENT DETAILS OF CONSTRUCTION TRAFFIC CONTROL DEVICES.
- THE CONTRACTOR WILL BE REQUIRED TO COVER EXISTING SIGNS WHICH CONFLICT WITH CONSTRUCTION SIGNS AS REQUIRED IN SECTION 630.11 OF THE STANDARD SPECIFICATIONS.
- QUANTITIES SHOWN ON THE SCHEDULE OF CONSTRUCTION TRAFFIC CONTROL DEVICES WERE BASED ON (1) SET-UP OF LANE CLOSURE ON A FOUR LANE DIVIDED HIGHWAY & (2) SET-UP OF SHOULDER CLOSURE.
- SEE SUMMARY OF APPROXIMATE QUANTITIES

Print Date: 2/12/2008	<b>Sheet Revisions</b>	<b>Colorado Department of Transportation</b>	<b>As Constructed</b>	<b>Tabulation of Traffic Engineering Items</b>	<b>Project No./Code</b>
File Name: 01_16701_Tab of Engineering Items.dgn	Date:      Comments      Init.	 18500 East Colfax Avenue Aurora, CO 80011 Phone: 303-365-7330 FAX: 303-365-7350	No Revisions:	Designer:      WCD      Structure      --	IM 070A-003
Horiz. Scale: 1:200      Vert. Scale: As Noted			Revised:	Detailer:      WCD      Numbers      --	
Unit Information      Unit Leader Initials			<b>Region 1</b>	Void:	Sheet Subset:      Traffic      Subset Sheets:      1 of 12
					Sheet Number <b>57</b> -

SIGN NO.	SIGN CODE	LOCATION	SIGN PANEL SIZE	BACK-GROUND COLOR	REMOVE SIGN PANEL (EACH)	REMOVE GROUND SIGN (EACH)	RESET GROUND SIGN (EACH)	NO. OF POSTS	LENGTH OF POST	STEEL POST (P2) (2.5 IN RD SCH 80)		STEEL POST (W SHAPE) (LIN FT)				CONC FOOTING TYPE (EACH)				SIGN PANEL (SQ FT)			VAR. SP. LIMIT SIGN (EACH)	FLASHING BEACON (EACH)	COMMENTS			
										POST (LIN FT)	SLIPBASE (EACH)	W6x12	W6x15	W8x18	W8x21	1	2	3	4	CLASS I	CLASS II	CLASS III						
MP 184 EB CHAIN STATION																												
1	SPECIAL	MP 183.85 EB	4'x5'	WHITE				1	13'																		SEE NOTE 1	
2	SPECIAL	MP 184.10 EB	4'x3'	YELLOW				2	11'	22.0	2																	
3	SPECIAL	MP 184.17 EB	3'x4'	WHITE				1	12'	12.0	1																	
4	SPECIAL	MP 184.19 EB	3'x4'	WHITE				1	12'	12.0	1																	
5	SPECIAL	MP 184.28 MED	5'x5'	WHITE				2	13'	26.0	2																	
MP 195 EB CHAIN STATION																												
INTENTIONALLY LEFT BLANK																												
6																												
7	SPECIAL	MP 194.50 EB	8'x5'	YELLOW				2	12'/13'			25.0																
8	SPECIAL	MP 195.50 EB	4'x5'	WHITE				1	13'																			
9	SPECIAL	MP 195.56 EB	4'x3'	YELLOW	1																							
10	SPECIAL	MP 195.66 EB	3'x4'	WHITE	1																							
11	SPECIAL	MP 195.78 EB	3'x4'	WHITE	1																							
12		MP 195.85 EB				1																						
13	SPECIAL	MP 195.87 EB	3'x4'	WHITE	1																							
14	SPECIAL	MP 195.95 EB	3'x4'	WHITE	1																							
15	SPECIAL	MP 196.05 EB	3'x4'	WHITE	1																							
16	48R2-1(65)	MP 196.18 MED	4'x5'	WHITE				2	13'	26.0	2																	
17	48R2-1(65)	MP 196.20 EB	4'x5'	WHITE				2	13'	26.0	2																	
MP 197 WB CHAIN STATION																												
INTENTIONALLY LEFT BLANK																												
18																												
19	SPECIAL	MP 195.88 WB	5'x5'	WHITE				2	13'	26.0	2																	
20	SPECIAL	MP 196.45 WB	4'x3'	YELLOW				2	11'	22.0	2																	
21	SPECIAL	MP 197.00 WB	5'x4.5'	YELLOW				2	13'	26.0	2																	
22		MP 197.14 WB				1																						
23	SPECIAL	MP 197.15 WB	4'x5'	WHITE				1	13'																			
24a	SPECIAL	MP 197.43 WB	8'x6'	WHITE/YEL				2	16'-6"/15'-6"			32.0																
24b	SPECIAL		8'x1.5'	WHITE																								

NOTE:  
1. ALL BLANKOUT SIGN (FIBER OPTIC) ARE TO BE INSTALLED WITH A MULTI-DIRECTIONAL ASSEMBLY.  
SEE PROJECT PLAN SHEETS FOR DETAIL.

Computer File Information		Index of Revisions		Colorado Department of Transportation		As Constructed		Tabulation of Signs		Project No./Code	
Creation Date:	3/30/07	Initials:	WCD								IM 070A-003
Last Modification Date:	4/12/07	Initials:	WCD								16701
Full Path:	\PROJECTS\I-70 Chain Up										
Drawing File Name:	ChainUp_Tabulation of Signs.dwg										
Acad Ver:	2004	Scale:	1 IN = 100 FT	Units:	English	Region 1 - Traffic		Sheet Subst: Traffic		Subst Sheet Number: 2 of 12	
No Revisions:		Revised:		Void:		Designer: WCD		Structure Numbers		Sheet Number 52	
						Detailer: WCD					

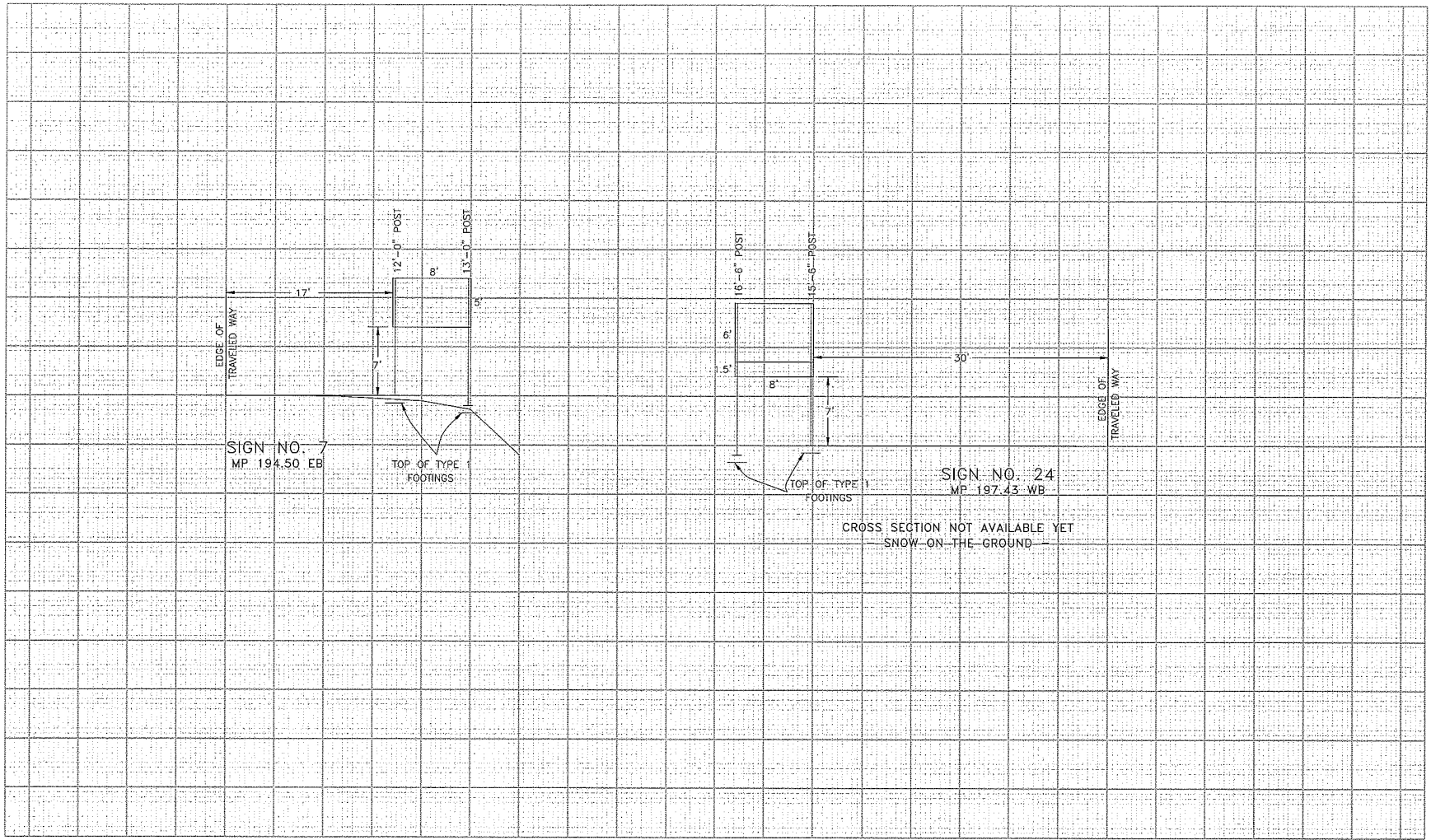


SIGN NO.	SIGN CODE	LOCATION	SIGN PANEL SIZE	BACK-GROUND COLOR	REMOVE SIGN PANEL (EACH)	REMOVE GROUND SIGN (EACH)	RESET GROUND SIGN (EACH)	NO. OF POSTS	LENGTH OF POST	STEEL POST (P2) (2.5 IN RD SCH 80)		STEEL POST (W SHAPE) (LIN FT)				CONC FOOTING TYPE (EACH)				SIGN PANEL (SQ FT)			VAR. SP. LIMIT SIGN (EACH)	FLASHING BEACON (EACH)	COMMENTS		
										POST (LIN FT)	SIPBASE (EACH)	W6x12	W6x15	W8x18	W8x21	1	2	3	4	CLASS I	CLASS II	CLASS III					
25	INTENTIONALLY LEFT BLANK							MP 219 & 221 WB	CHAIN STATIONS																		
26	SPECIAL	MP 219.15 WB	5'x5'	WHITE				2	13'	26.0	2																
27	SPECIAL	MP 219.23 WB	3'x4'	WHITE				1	12'	12.0	1																
28	SPECIAL	MP 219.32 WB	3'x4'	WHITE				1	12'	12.0	1																
29	SPECIAL	MP 219.41 WB	3'x4'	WHITE				1	12'	12.0	1																
30	SPECIAL	MP 219.49 WB	3'x4'	WHITE				1	12'	12.0	1																
31	SPECIAL	MP 219.52 WB	4'x3'	YELLOW				2	11'	22.0	2																
32	SPECIAL	MP 219.90 WB	4'x5'	WHITE				1	13'																	SEE NOTE 1	
33	SPECIAL	MP 221.10 WB	4'x5'	WHITE				1	13'																	SEE NOTE 1	
PROJECT TOTAL:					6	2				294	24	57															

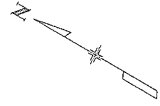
NOTE:  
1. ALL BLANKOUT SIGN (FIBER OPTIC) ARE TO BE INSTALLED WITH A MULTI-DIRECTIONAL ASSEMBLY.  
SEE PROJECT PLAN SHEETS FOR DETAIL.

Computer File Information		Index of Revisions		Colorado Department of Transportation		As Constructed		Tabulation of Signs			Project No./Code	
Creation Date:	3/30/07	Initials:	WCD			18500 E. Colfax Avenue Aurora, CO 80011 Phone: (303) 365-7333 FAX: (303) 365-7350		No Revisions:		IM 070A-003		
Last Modification Date:	4/12/07	Initials:	WCD			Region 1 -- Traffic CBR		Revised:		16701		
Full Path:	PROJECTS\1-70 Chain Up							Designer: WCD		Structure Numbers		
Drawing File Name:	ChainUp_Tabulation of Signs.dwg							Detailer: WCD		Sheet Number		
Acad Ver:	2004	Scale:	1 IN = 100 FT	Units:	English			Sheet Subset: Traffic		Subset Sheet Number: 3 of 12		
											Sheet Number	53

D:\projects\23244\_P16\_C\01\_Projects\170\_Dish\_Up\_Phase 2\04\_1670L\_Cross Sections at Class III Signs.dgn



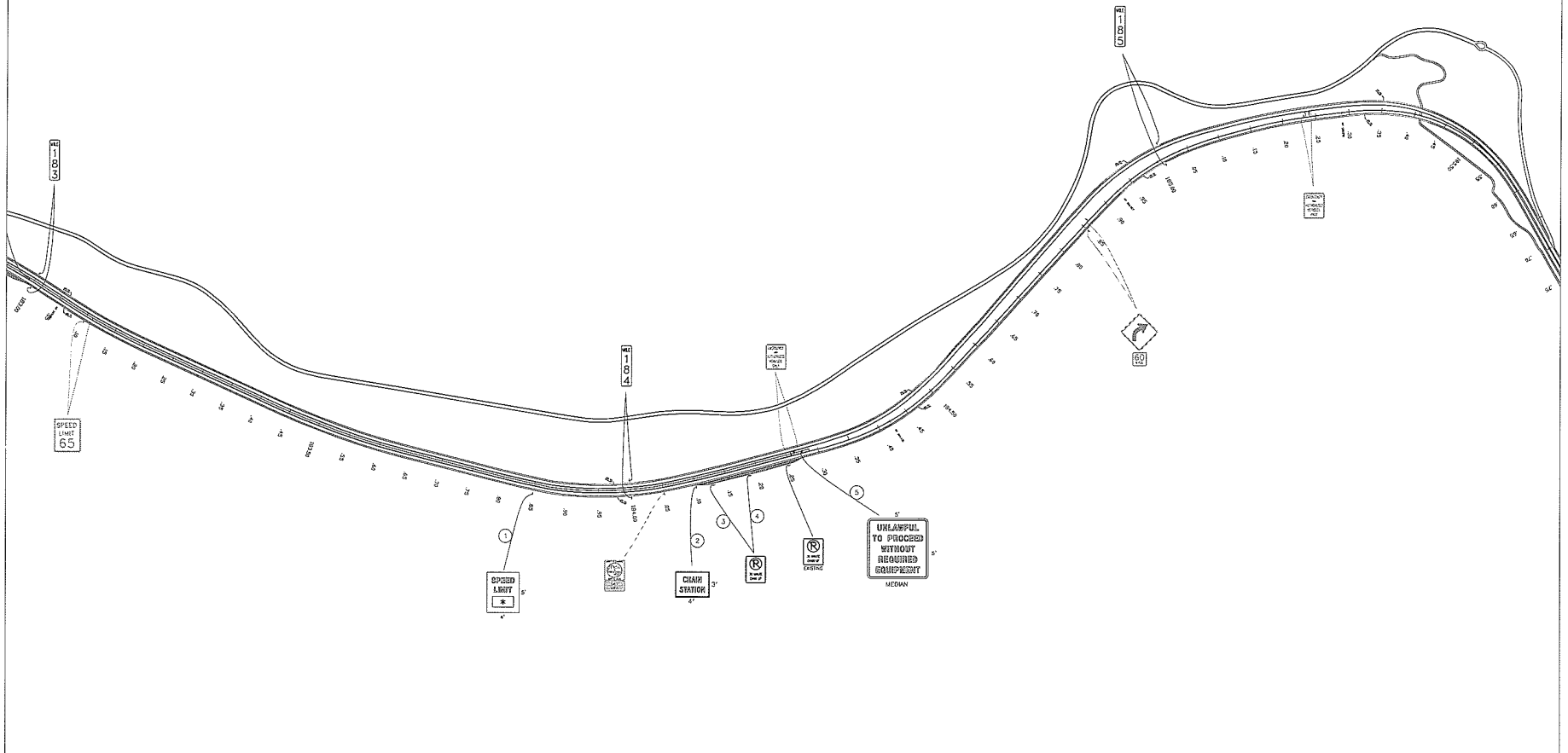
Print Date: 2/12/2008	Sheet Revisions			Colorado Department of Transportation 18500 East Colfax Avenue Aurora, CO 80011 Phone: 303-365-7330 FAX: 303-365-7350 Region 1 CBR	As Constructed	Cross Sections at Class III Sign Locations		Project No./Code
File Name: 04_1670L_Cross Sections at Class III Signs.dgn	Date:	Comments:	Init.		No Revisions:	Designer: WCD	Structure Numbers: -	IM 070A-003
Horiz. Scale: 1:120				Revised:	Detailer: WCD		16701	
Unit Information				Void:	Sheet Subset: Traffic	Subset Sheets: 4 of 12	Sheet Number 54 -	



CHAIN STATION

ALL SIGNS NOT SHOWN ARE TO REMAIN IN PLACE


ALL SIGNS SHOWN WITHOUT ITEM NUMBER ARE FOR INFORMATION ONLY



Computer File Information	
Creation Date:	2/22/07
Initials:	WCD
Last Modification Date:	2/12/08
Initials:	WCD
Full Path:	PROJECTS\1-70 ChainUp_Phase 2
Drawing File Name:	05-09_1-70Plan180-248_ChainUp.dwg
Acad Ver:	2004
Scale:	1 IN = 100 FT Units: English

Index of Revisions	

Colorado Department of Transportation



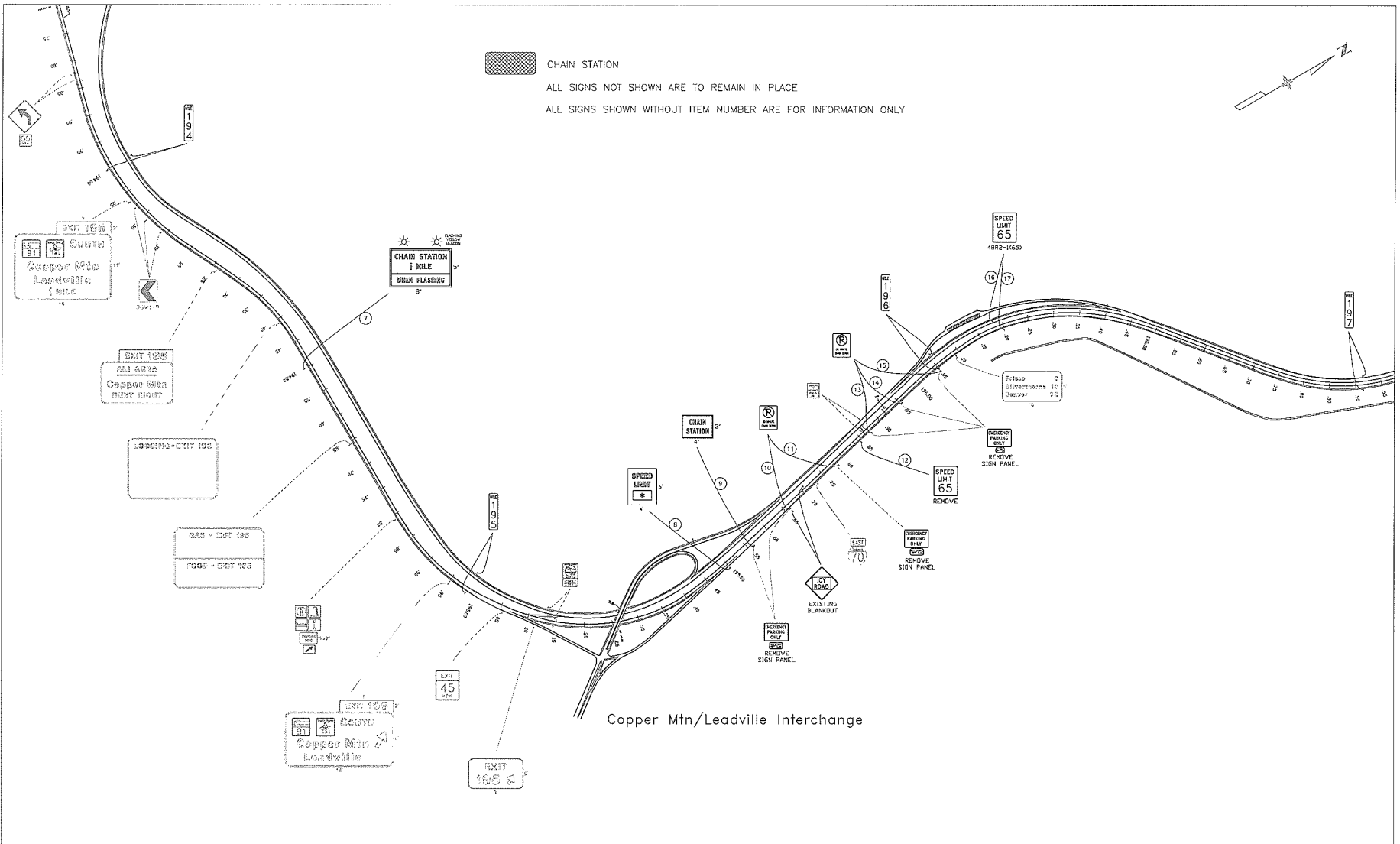
18500 E. Colfax Avenue  
Aurora, CO 80011  
Phone: (303) 365-7330 FAX: (303) 365-7350

Region 1 - Traffic CBR

As Constructed	
No Revisions:	
Revised:	
Void:	

MP 184 EB Chain Station	
Designer:	WCD
Detailer:	WCD
Structure Numbers:	
Sheet Subset:	Traffic
Subst Sheet Number:	5 of 12


Project No./Code	
	IM 070A-003
	16701
Sheet Number:	55



Computer File Information	
Creation Date:	2/22/07 Initials: WCD
Last Modification Date:	2/12/08 Initials: WCD
Full Path:	PROJECTS\1-70 ChainUp_Phase 2
Drawing File Name:	05-09-1-70Plan180-248_ChainUp.dwg
Acad Ver:	2004 Scale: 1 IN = 100 FT Units: English

Index of Revisions	

Colorado Department of Transportation



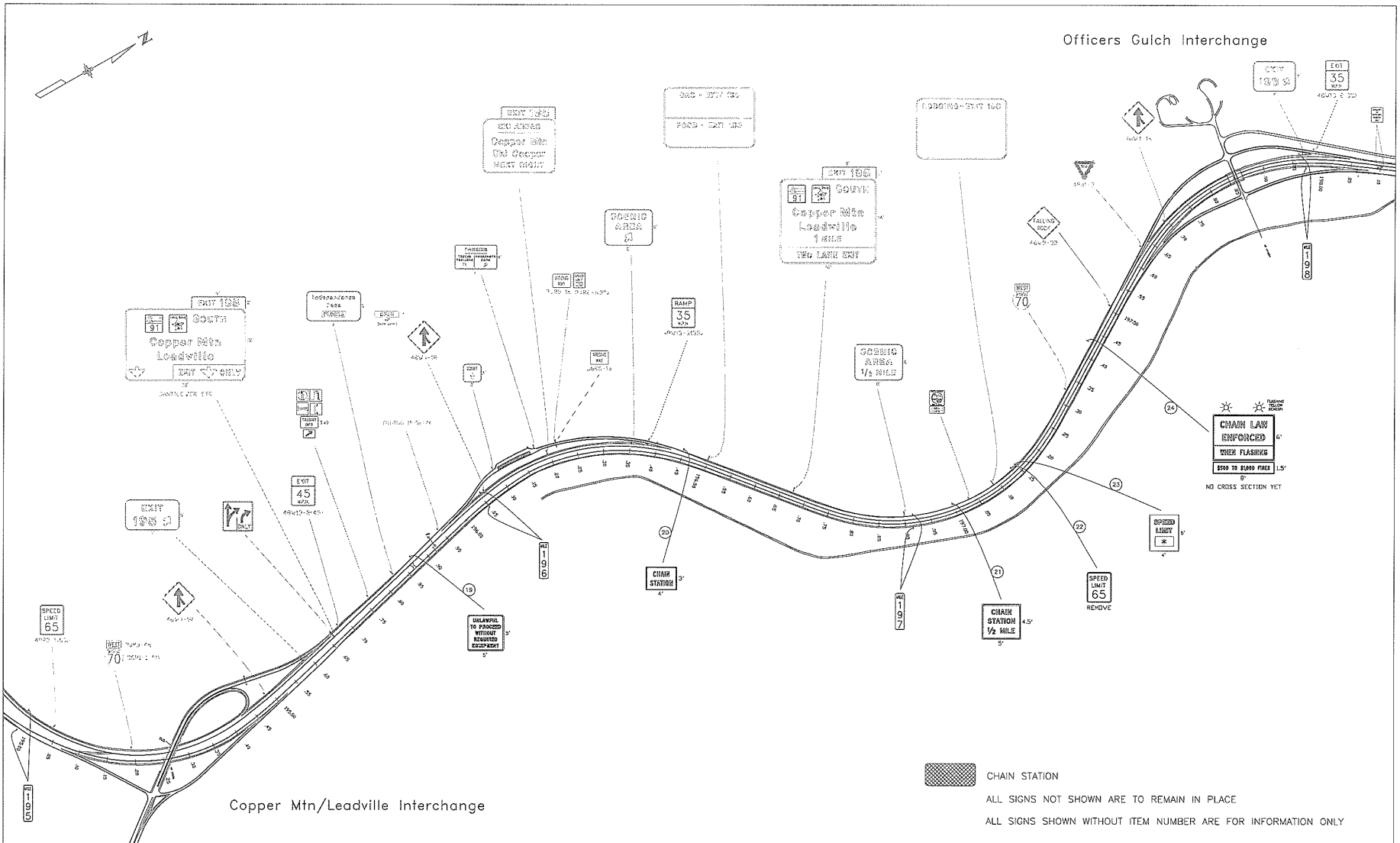
18500 E. Calfax Avenue  
Aurora, CO 80011  
Phone: (303) 365-7330 FAX: (303) 365-7350

Region 1 - Traffic CBR

As Constructed	
No Revisions:	
Revised:	
Void:	

MP 195 EB Chain Station			
Designer:	WCD	Structure Numbers	
Detailer:	WCD		
Sheet Subset:	Traffic	Subset Sheet Number:	6 of 12


Project No./Code	
IM 070A-003	
16701	
Sheet Number :	56



Computer File Information	
Creation Date:	2/22/07 Initials: WCD
Last Modification Date:	2/12/08 Initials: WCD
Full Path:	PROJECTS\I-70 ChainUp_Phase 2
Drawing File Name:	05-09_I-70Pion180-248_ChainUp.dwg
Acad Ver:	2004 Scale: 1 IN = 100 FT Units: English

Index of Revisions	

Colorado Department of Transportation



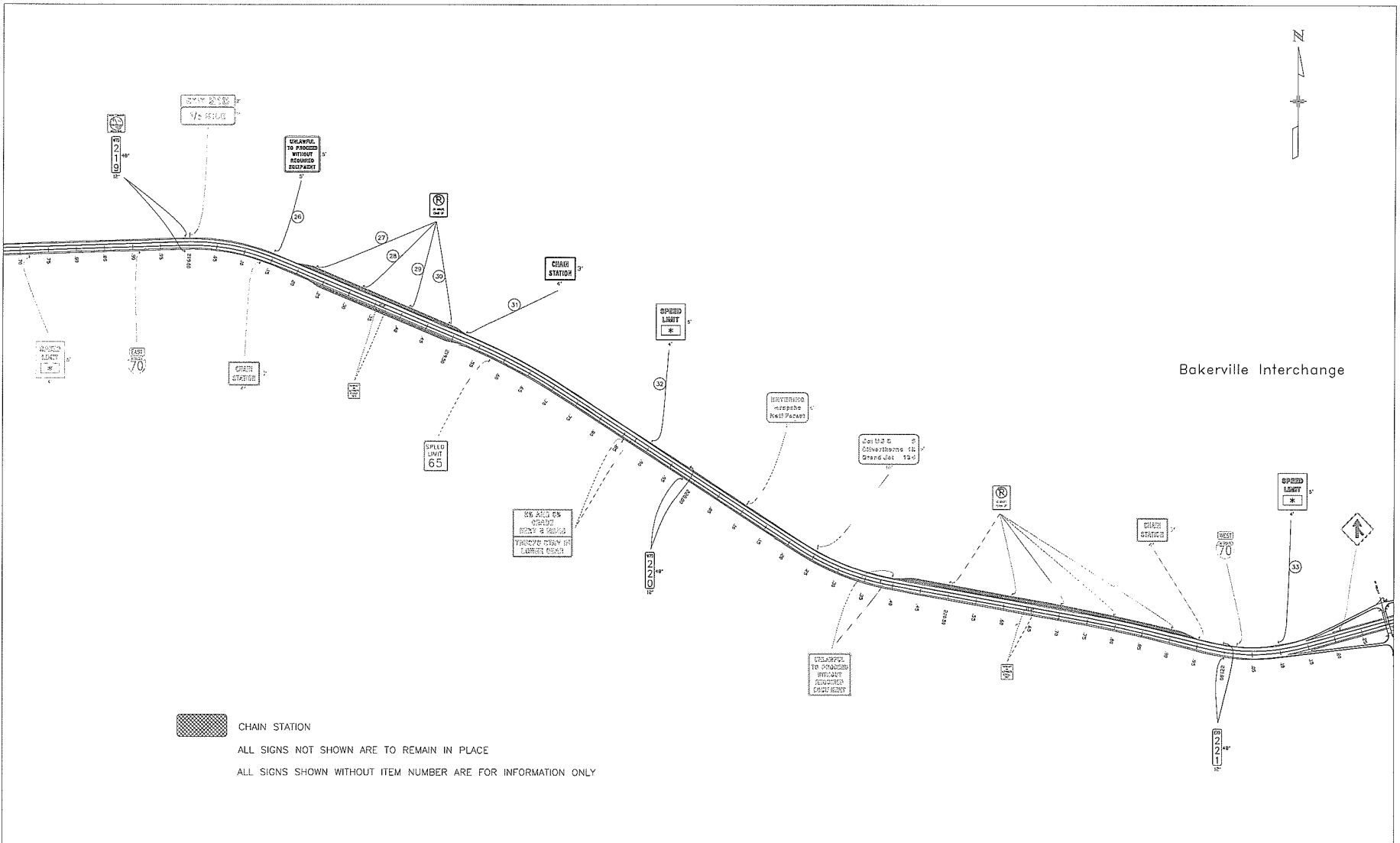
18500 E. Colfax Avenue  
Aurora, CO 80011  
Phone: (303) 365-7330 FAX: (303) 365-7350


Region 1 - Traffic CBR

As Constructed
No Revisions:
Revised:
Void:


MP 197 WB Chain Station	
Designer:	WCD
Detailer:	WCD
Structure Numbers:	
Sheet Subset:	Traffic
Subset Sheet Number:	7 of 12

Project No./Code
IM 070A-003
16701
Sheet Number : 57

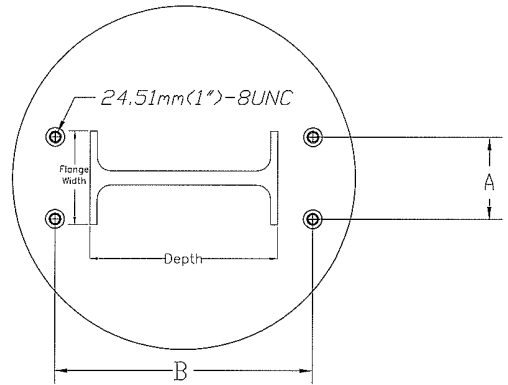


 CHAIN STATION  
 ALL SIGNS NOT SHOWN ARE TO REMAIN IN PLACE  
 ALL SIGNS SHOWN WITHOUT ITEM NUMBER ARE FOR INFORMATION ONLY

<b>Computer File Information</b>		<b>Index of Revisions</b>		<b>Colorado Department of Transportation</b>		<b>As Constructed</b>		<b>MP 219 &amp; 221 WB Chain Stations</b>		<b>Project No./Code</b>	
Creation Date:	2/22/07	Initials:	WCD				No Revisions:			IM 070A-003	
Last Modification Date:	2/12/08	Initials:	WCD				Revised:	Designer: WCD	Structure	16701	
Full Path:	\\PROJECTS\1-70 ChainUp_Phase 2						Void:	Detailer: WCD	Numbers	Sheet Number : 58	
Drawing File Name:	05-09_1-70Plan180-24B_ChainUp.dwg							Sheet Subset:	Traffic	Subset Sheet Number: 8 of 12	
Acad Ver:	2004	Scale:	1 IN = 100 FT Units: English								


 18500 E. Colfax Avenue  
 Aurora, CO 80011  
 Phone: (303) 365-7330 FAX: (303) 365-7350  
 Region 1 - Traffic CBR

PLAN VIEW OF FOOTING



**A** (lateral spacing of anchors)

76.2mm(3") for B-525 used on 152mm(6") & 203mm(8") wide flange posts

101.6mm(4") for B-525 used on 254mm(10"), 305mm(12"), 356mm(14"), 406mm(16"), 457mm(18") & 533mm(21") wide flange posts.

**B** (longitudinal spacing of anchors)

bracket #1 - depth of post section plus 201.6mm(7<sup>15</sup>/<sub>16</sub>")

bracket #2 - depth of post section plus 204.8mm(8<sup>1</sup>/<sub>16</sub>")

bracket #3 - depth of post section plus 206.8mm(8<sup>1</sup>/<sub>8</sub>")

METRIC STEEL SHAPES

SIZE	Depth (mm)	Flange Width (mm)
W310 x 39	310	165
W250 x 39	262	147
W250 x 33	258	146
W200 x 31	210	134
W200 x 27	207	133
W150 x 22	152	152
W150 x 18	153	102

ENGLISH STEEL SHAPES


SIZE	Depth (in)	Flange Width (in)
W12 x 26	12	6 1/2
W10 x 26	10	5 3/4
W10 x 22	10	5 3/4
W8 x 21	8	5 1/4
W8 x 18	8	5 1/4
W6 x 15	6	6
W6 x 12	6	4

NOTES:

1. Footing Size:

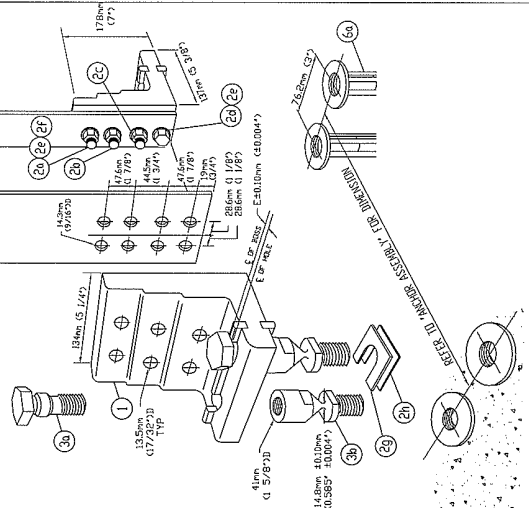
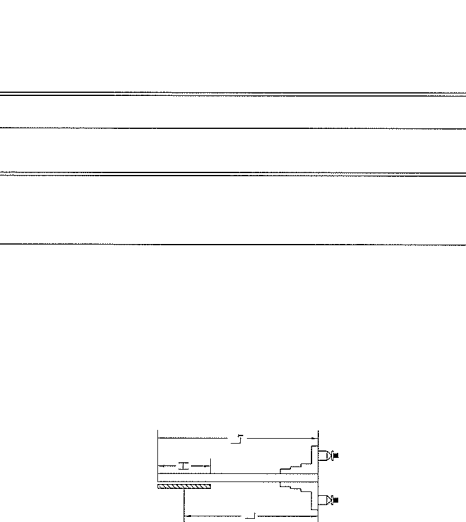
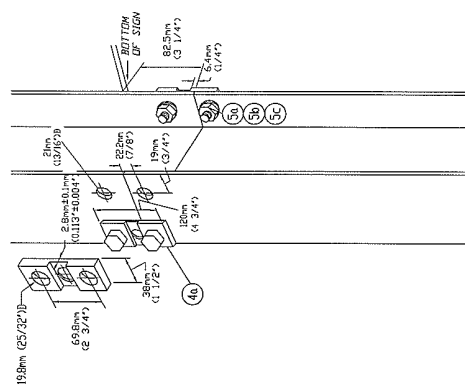
Type 1 to Type 6 footings shown on S-614-6 require a 150mm(6") increase in diameter ("D") to accommodate anchors shown on this detail. Horizontal reinforcing hoops will be increased to provide a 50mm(2") clearance from outside the footing. Reinforcing and other structural data remain the same. Type 7 requires no change.

2. A rigid steel template is recommended for anchor installation. The anchor spacing for template is dependent on the size of the required posts and brackets. See "Plan View of Footing" for details.

Computer File Information		Index of Revisions		Colorado Department of Transportation		As Constructed		Multi-Directional Break-Away Detail		Project No./Code	
Creation Date:	1/28/97	Initials:	SJH				No Revisions:	For Anchor Installations		IM 070A-003	
Last Modification Date:	1/29/97	Initials:	SJH				Revised:	Designer:	SJH	Structure	
Full Path:	\\STANDARD\						Void:	Detailer:	SJH	Numbers	16701
Drawing File Name:	MULTI-1.dwg							Sheet Subset:	Traffic	Subset Sheet Number:	9 of 12
				 4201 E. Arkansas Denver, CO 80222 Phone: 757-9355 FAX: 757-9219						Sheet Number - 59	

**BILL OF MATERIALS**

ITEM	DESCRIPTION	QTY	PART NO.
1	Bracket 6061-T6 Aluminum (See Bracket Selection Table)	2	SBK052-TA-2A-3A
2	Bracket Hardware Assembly, 8252-LP	1	SB-8252LP
3	Bolt 12mm(1/2")-13x40x8.6mm(5/8")-11, Hex Head, ASTM A153, Gr. B, Co. ASTM A153	4	S25585275
2a	Bolt 12mm(1/2")-13x40x8.6mm(5/8")-11, Hex Head, ASTM A153, Gr. B, Co. ASTM A153	4	S25585200
2c	Cap Screw 12mm(1/2")-13x35mm(5/8")-11, Hex Head, ASTM A153, Gr. B, Co. ASTM A153	1	S2552125
21	Nut 12mm(1/2")-13mm(1/2"), Heavy Hex, ASTM A563 Gr. B, Co. ASTM A153	12	S2554125
2b	Nut 12mm(1/2")-13mm(1/2"), Heavy Hex, ASTM A563 Gr. B, Co. ASTM A153	12	S10005H19
2d	Shim 24.5mm(1") In. Square, 18 Gauge, Gild. Steel Sheet	2	S10005H19
3	Fastener, Coupling & Bolt Assembly, LK, Type B	1	SB-C86714
3a	Special Bolt 24.5mm(1")-38mm(1 1/2"), ASTM A4-9, Gr. B, ASTM A153/B685	4	SB-C86714
3b	Special Nut 24.5mm(1")-38mm(1 1/2"), ASTM A4-9, Gr. B, ASTM A153/B685	4	SB-C86714
4	Flange Plate Type 8252, ANSI A130 Steel, Galv. ASTM A123	4	SB-IB1
5	Flange Plate Type 8252, ANSI A130 Steel, Galv. ASTM A123	4	SB-IB1
5a	Bolt Hardware Assembly, Type B	1	SB-IB1
5b	Bolt 19.5mm(3/4")-10x60x57.8mm(2 3/8")-11, Hex Head, ASTM A153, Gr. B, Co. ASTM A153	8	S3256723
5c	Nut 19.5mm(3/4")-10mm(3/8"), Heavy Hex, ASTM A563 Gr. B, Co. ASTM A153	8	S2554125
5d	Nut 19.5mm(3/4")-10mm(3/8"), Heavy Hex, ASTM A563 Gr. B, Co. ASTM A153	8	S2554125
6	Anchor Assembly, Type B	1	SB-IB1
6a	Anchor 24.5mm(1")-80mm(3 1/8"), 50% S.F. Finish, AISI 1038 Rod, MB 1008 Coll	4	SB-IB1
6b	Anchor 24.5mm(1")-80mm(3 1/8"), 50% S.F. Finish, AISI 1038 Rod, MB 1008 Coll	4	SB-IB1
	** 2-4 Mil. Thick Hot Dip Zinc Coatings 35-70ZT Polyester powder coat.		



**GENERAL NOTES:**

1. Meets all requirements of "ASHTO standard specifications for traffic signals", luminaires and traffic signals.
2. All hardware (American Standard) supplied is hot dip galvanized per ASTM A153 or mechanically galvanized per ASTM B665.
3. Fasteners (except for special bolt and coupling, are installed with lockwashers or locknuts and do not require additional torque requirements. Fasteners should be made as tight as possible with conventional wrenches unless noted otherwise.
4. Square and level individual components to minimize need for shimming.
5. Structural steel to be hot dip galvanized per ASTM A123
6. No more than two shims underneath any one coupling and no more than three shims underneath any two couplings.
7. Select proper post size by referring to post selection tables for medium and large signs
8. Refer for complete installation instructions.

Select correct bracket number from bracket selection table using the proper "L" value as shown in the attached figure.

$$L = L_1 - H/2$$

POST WIDTH	BRACKET # 1	BRACKET # 2	BRACKET # 3
152MM(6")	MIN. 'L' - 3.6m(12')	MAX. 'L' - 2.7m(9')	MIN. 'L' - 3.0m(12')
	MAX. 'L' - 8.8m(29')	MIN. 'L' - 2.7m(9')	MAX. 'L' - 2.7m(9')
203MM(8")	MIN. 'L' - 4.3m(14')	MAX. 'L' - 3.0m(10')	MIN. 'L' - 4.3m(14')
	MAX. 'L' - 8.8m(29')	MAX. 'L' - 3.0m(10')	MAX. 'L' - 3.0m(10')

**INSTALLATION NOTES**

Wrench sizes required: 9/16", 7/8", 1-1/16", 1-1/4", 1-7/16", 1-5/8"

**BRACKET ASSEMBLY:**  
 \* Assemble bracket to post with bolts provided.  
 \* Square and tighten (Item 1, 2a, 2b, 2c, 2d, 2e & 2f)

**ANCHOR ASSEMBLY:**  
 \* Assemble coupling anchors 6a to installation template (not shown). Rigid steel template is recommended  
 \* Lower entire anchor assembly into fresh concrete  
 \* Make adequate line position so that the tops of the individual anchors 6a are flush with the finished top surface of the footings.

**COUPLING ASSEMBLY:**  
 \* Suspend post over footing and insert special bolts 3a through bracket  
 \* Before bracket, thread couplings 3b into anchors 6a but leave loose.  
 \* Lower post with special bolts 3a onto loose couplings 3b and thread bolts into couplings.  
 \* Thread couplings all the way in to anchors 6a  
 \* NOTE: do not place torque across necked down portion of coupling - wrench flats are provided on either side for proper tightening.  
 \* If post is not plumb, insert shims 2g and 2h between couplings 3b and anchor 6a.

**HINGE ASSEMBLY:**  
 \* Bolt upper and lower posts together on flat surface.  
 \* Place hinge plates 4a on outer flanges and secure with bolts 5a, 5b and 5c-snug but do not tighten.  
 \* Make sure upper and lower posts are in alignment; then tighten all nuts 5c to proof load -- 1/2 a turn beyond snug

Computer File Information		
Creation Date:	1/28/97	Initials: SJH
Last Modification Date:	1/28/97	Initials: SJH
Full Path:	\STANDARD\	
Drawing File Name:	MULTI-2.dwg	

Index of Revisions	Revision No.	Description

Colorado Department of Transportation

**DOT**  
DEPARTMENT OF TRANSPORTATION

4201 E. Arkansas  
 Denver, CO 80222  
 Phone: 757-9355      FAX: 757-9219

Staff Traffic

As Constructed	Multi-Directional Break-Away Detail for 152mm(6") and 203mm(8") WF Sign Post		Project No./Code
No Revisions:	Designer: SJH	Structure Numbers	IM 070A-003
Revised:	Detailer: SJH		16701
Void:	Sheet Subset: Traffic	Subset Sheet Number: 10 of 12	Sheet Number - <b>60</b>



Computer File Information		
Creation Date:	1/28/97	Initials: SJH
Last Modification Date:	1/28/97	Initials: SJH
Full Path:	\STANDARD\	
Drawing File Name:	MULTI-3.dwg	

Index of Revisions		

**Colorado Department of Transportation**

4201 E. Arkansas  
 Denver, CO 80222  
 Phone: 757-9355 FAX: 757-9219

**Staff Traffic**

As Constructed		Multi-Directional Break-Away Detail for 254mm(10"), 305mm(12"), 356mm(14"), 406mm(16"), 457mm(18") and 533mm(21") WF Sign Post	
No Revisions:			
Revised:	Designer: SJH	Structure Numbers	
Void:	Detailer: SJH		
	Sheet Subset: Traffic	Subset Sheet Number: 11 of 12	

Project No./Code
IM 070A-003
16701
Sheet Number - 61

**BILL OF MATERIALS**

ITEM	DESCRIPTION	QTY	POST NO.
1	Bracket	2	SBK6250-1A, 2A, 3A
2	Bracket Hardware Assemblies, B650-LP		SB-8650LPH
3	Bolt	4	ASTM A193, Gr. 7, Hex. ASH A193, Gr. 7, Hex. ASH A193
4	Bolt	4	ASTM A193, Gr. 7, Hex. ASH A193, Gr. 7, Hex. ASH A193
5	Cap Screw	4	ASTM A193, Gr. 7, Hex. ASH A193, Gr. 7, Hex. ASH A193
6	Nut	4	ASTM A193, Gr. 7, Hex. ASH A193, Gr. 7, Hex. ASH A193
7	Washer	4	ASTM A193, Gr. 7, Hex. ASH A193, Gr. 7, Hex. ASH A193
8	Washer	4	ASTM A193, Gr. 7, Hex. ASH A193, Gr. 7, Hex. ASH A193
9	Shim	2	ASTM A193, Gr. 7, Hex. ASH A193, Gr. 7, Hex. ASH A193
10	Shim	2	ASTM A193, Gr. 7, Hex. ASH A193, Gr. 7, Hex. ASH A193
11	Special Bolt	2	ASTM A193, Gr. 7, Hex. ASH A193, Gr. 7, Hex. ASH A193
12	Coupling	4	ASTM A193, Gr. 7, Hex. ASH A193, Gr. 7, Hex. ASH A193
13	Anchor	4	ASTM A193, Gr. 7, Hex. ASH A193, Gr. 7, Hex. ASH A193
14	Hinge Plate	4	ASTM A193, Gr. 7, Hex. ASH A193, Gr. 7, Hex. ASH A193
15	Hinge Hardware Assemblies, Type B	4	SB-HHB
16	Bolt	8	ASTM A193, Gr. 7, Hex. ASH A193, Gr. 7, Hex. ASH A193
17	Nut	8	ASTM A193, Gr. 7, Hex. ASH A193, Gr. 7, Hex. ASH A193
18	Washer	8	ASTM A193, Gr. 7, Hex. ASH A193, Gr. 7, Hex. ASH A193
19	Washer	8	ASTM A193, Gr. 7, Hex. ASH A193, Gr. 7, Hex. ASH A193
20	Anchor Assemblies, Type B	4	SBAPK
21	Anchor	4	SBAPK

**GENERAL NOTES:**

- 1 Needs all requirements of "AASHTO standard specifications for structural supports for highway signs, luminaires and traffic signals".
- 2 All hardware (American Standard) supplied is hot dip galvanized per ASTM A153 or mechanically galvanized per ASTM B695.
- 3 Fasteners, except for special bolt and coupling, are installed with lockwashers or locknuts and do not have specific torque requirements. If torque values are noted, tighten as possible with conventional wrenches unless noted otherwise.
- 4 Square and level individual components to minimize need for shimming.
- 5 Structural steel to be hot dip galvanized per ASTM A153.
- 6 No more than two shims underneath any one coupling and no more than three shims underneath any two couplings.
- 7 Select proper post size by referring to post selection tables for medium and large signs.
- 8 Refer below for complete installation instructions.

Select correct bracket number from bracket selection table using the proper "L" value as shown in the attached figure.

$$L = L_T - H/2$$

POST WIDTH	BRACKET #1		BRACKET #2		BRACKET #3	
	MIN. 'L'	MAX. 'L'	MIN. 'L'	MAX. 'L'	MIN. 'L'	MAX. 'L'
254MM(10")	4.9m(16')	8.8m(29')	3.3m(11')	4.9m(16')	-	3.3m(11')
305MM(12")	5.5m(18')	8.8m(29')	4.0m(13')	5.5m(18')	-	4.0m(13')
356MM(14")	5.8m(19')	8.8m(29')	4.3m(14')	5.8m(19')	-	4.3m(14')
406MM(16")	6.4m(21')	8.8m(29')	4.6m(15')	6.4m(21')	-	4.6m(15')
457MM(18")	7.0m(23')	8.8m(29')	4.9m(16')	7.0m(23')	-	4.9m(16')
533MM(21")	7.8m(25')	8.8m(29')	5.5m(18')	7.8m(26')	-	5.5m(18')

**INSTALLATION NOTES**

Wrench sizes required: 9/16", 7/8", 1-1/16", 1-1/4", 1-7/16", 1-5/8"

**BRACKET ASSEMBLY:**

- \* Assemble bracket to post with bolts provided.
- \* Square and tighten (Item 1, 2a, 2b, 2c, 2d, 2e & 2f)

**ANCHOR ASSEMBLY:**

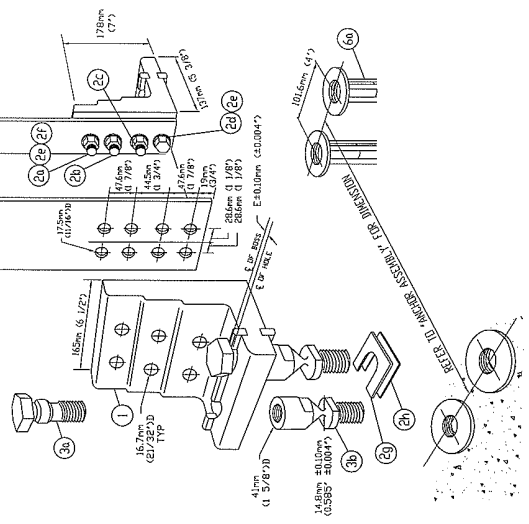
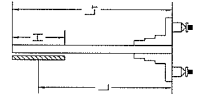
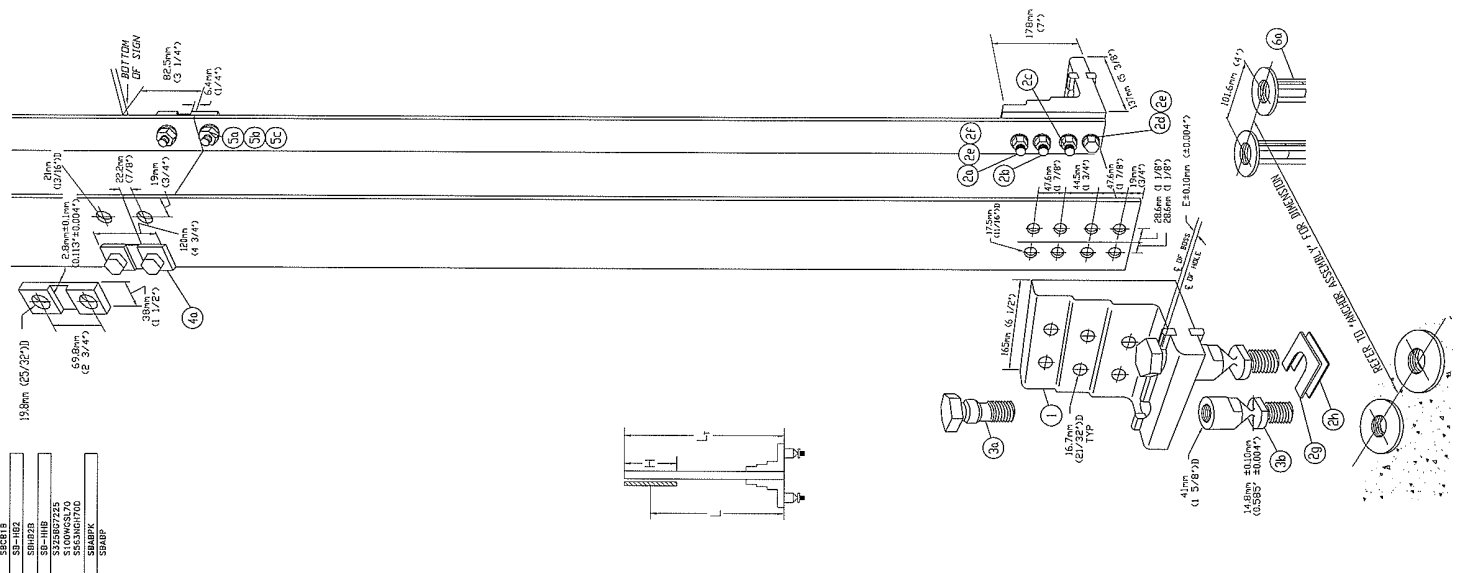
- \* Assemble coupling anchors 6a to installation template (not shown). Rigid steel template is recommended.
- \* Lower entire anchor assembly into fresh concrete and vibrate into position so that the tops of the individual anchors 6a are flush with the finished top surface of the footings.

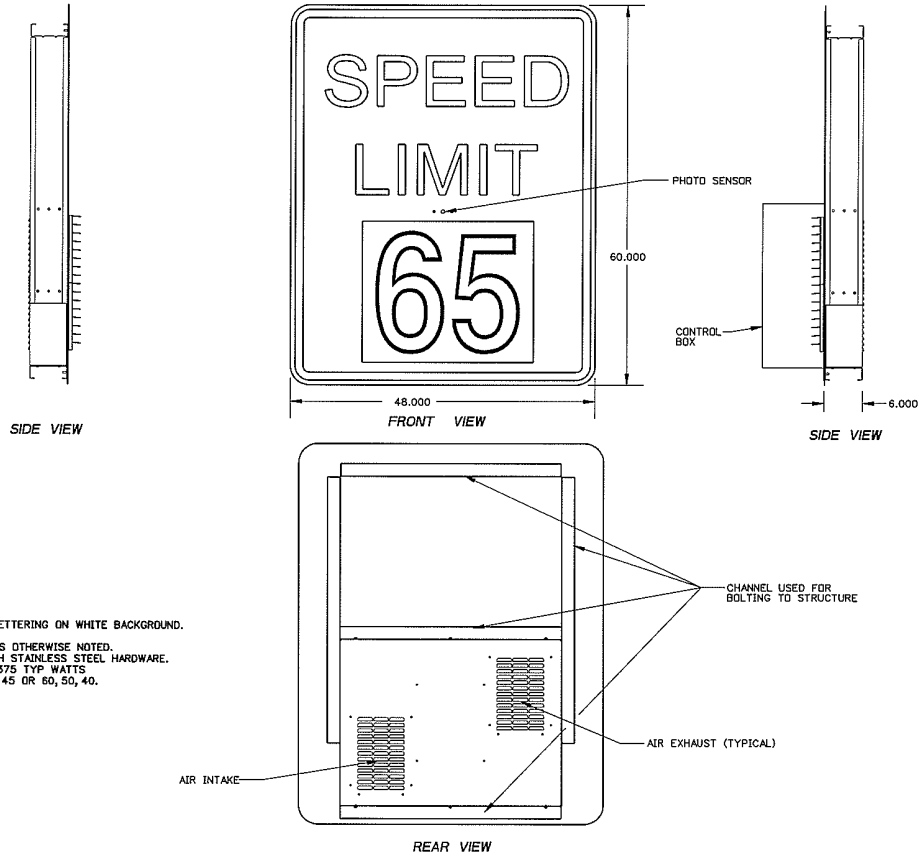
**COUPLING ASSEMBLY:**

- \* Suspend post over facing and insert special bolts 3c through bracket 1.
- \* Below bracket, thread couplings 3b into anchors 6a, but leave loose.
- \* Lower post with special bolts 3a onto loose couplings 3b and thread bolts into couplings.
- \* Thread couplings all the way in to anchors 6a.
- \* Tighten special bolts 3a.
- \* NOTE: do not place torque across necked down portion of coupling-- wrench flats are provided on either side for proper tightening.
- \* If post is not plumb, insert shims 2g and 2h between couplings 3b and anchor 6a.

**HINGE ASSEMBLY:**

- \* Butt upper and lower posts together on flat surface.
- \* Place hinge plates 4a on outer flanges and secure with bolts 5a, 5b and 5c--snug but do not tighten.
- \* Make sure upper and lower posts are in alignment; then tighten all nuts 5c to proof load -- 1/2 a turn beyond snug





NOTES:

- 1) REVERSE FONT USED FOR BLACK LETTERING ON WHITE BACKGROUND.
- 2) REFLECTIVE FACE.
- 3) DIMENSIONS ARE IN INCHES UNLESS OTHERWISE NOTED.
- 4) ALL ALUMINUM CONSTRUCTION WITH STAINLESS STEEL HARDWARE.
- 5) POWER CALCS: 450 MAX WATTS 375 TYP WATTS.
- 6) DISPLAY SHALL BE EITHER: 65, 55, 45 OR 60, 50, 40.

Print Date: 2/12/2008	Sheet Revisions			Colorado Department of Transportation 18500 East Colfax Avenue Aurora, CO 80011 Phone: 303-365-7330 FAX: 303-365-7350 Region 1	As Constructed	VARIABLE SPEED LIMIT SIGN - DETAIL		Project No./Code
File Name: 12_16701VarSpdLimitSign-Detail.dgn	Date:	Comments	Init.		No Revisions:	Designer: WCD	Structure Numbers	IM 070A-003
Horiz. Scale: N.T.S. Vert. Scale: As Noted				Revised:	Detailer: WCD		16701	
Unit Information CBR				Void:	Sheet Subset: Traffic	Subset Sheets: 12 of 12	Sheet Number 62 -	

Fiber General Notes Rev 1.dwg

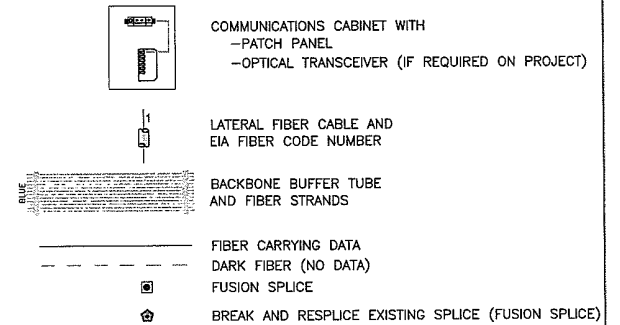
5/14/2007 11:27 AM


William Kascek, Self

**FIBER OPTIC GENERAL NOTES:**

1. Abbreviations used to describe the regeneration node location on the fiber optic splice sheets is as follows:  
EJT - EISENHOWER JOHNSON MEMORIAL TUNNEL
2. Existing fiber usage exists on fiber optic backbone cable. When splices exist in pull boxes and manholes, they will be shown on splice sheets for current devices transmitting data to and from the respective regeneration nodes.
3. The Contractor MUST submit to the Project Engineer, cut sheets and/or material descriptions for all fiber optic materials prior to purchase for approval by CDOT. In addition, copies of all manufacturer's recommended installation instructions and procedures for materials shall be provided to CDOT prior to the start of any fiber or electronic installation work.
4. All fiber optic work shall be per the manufacturer's instructions and recommendations. This shall include all splicing, termination, fiber optic closure management and all other materials provided.
5. Work in existing backbone fiber pull boxes and manholes;
  - a. Coil 25 feet of lateral fiber cable in pull boxes and 100 feet in manholes
  - b. Attach cable label for lateral fiber cable per Project Special Detail, ITS Pull Box Sheet.
  - c. Install cable management hardware in pull box per Project Special Detail, ITS Pull Box Sheet. (both proposed and existing pull boxes).
6. Interior of communications cabinets
  - a. Secure patch panel, all associated device equipment and all associated electrical equipment to complete the work.
  - b. Install lateral fiber cable in a location which will not damage cable or patch cords and not be disturbed by future routine maintenance, install strain relief and cable label.
  - c. Fiber strands shall be labeled with corresponding transmit (Tx), receive (Rx) and data direction from device location as part of required cable labeling.
7. The Contractor's responsibility will be to furnish and install materials as part of this project and provide a "path of light" and data communications from the various field cabinets to the regeneration nodes. The Contractor shall not be responsible for the integrity of the existing fiber backbone cable that this work is connecting to, outside of individual project splice locations and work conducted by the Contractor. If existing cable is damaged do to the Contractor's work, it shall be replaced by the Contractor at no additional cost to the project per the project specification.
8. Prior to installing the splice closure and fiber cable, the Contractor shall clean the interior of the existing pull box or manhole and along the rim where the respective lid rests to remove any dirt, sand or debris. After cleaning, the pea gravel shall be raked level in the bottom of the box.
9. Prior to attaching and bolting the pull box and manhole lids, the Contractor shall install conduit plugs in all conduit openings. Material shall be approved by CDOT per note 3 above prior to installation. This work shall not be paid for separately, but included in the conduit items.
10. It is estimated that 637 fiber splices and 28 terminations shall be required on this project. This work shall be paid for as part of fiber optic cable item.
11. The Contractor shall notify the Project Engineer 1 working day prior to work at each splicing location to have a CDOT representative on site while splicing is performed. In the event that the representative cannot be on site, 8 digital pictures, (taken at varying angles showing all completed work) shall be taken of the interior of the splice closure prior to reassembling and sealing, and all materials installed in the pull box in the final condition.
12. The Contractor shall schedule a pre fiber installation and a pre splicing meeting to ensure that all work will be conducted according to the plans and manufacturer's recommendations.
13. Testing of fiber optic cable shall be bi-directional and shall be conducted from the respective regeneration node. Testing shall be paid for as part of fiber optic cable item.

**LEGEND FOR FIBER OPTIC CABLE AND SPLICE DIAGRAM SHEETS**



<b>Computer File Information</b> Creation Date: 4/16/2007 Initials: WJKjr Last Modification Date: See Side Panel Initials: WJKjr Full Path: Drawing File Name: See Side Panel ACAD Ver: ACAD 2001L Scale: NTS Units: English		<b>Sheet Revisions</b>		 Colorado Department of Transportation ITS - Colorado Traffic Management Center 425C Corporate Circle Golden, Colorado 80401 Phone: 303-512-5834 FAX: 303-512-5878 ITS - CTMC With Region 1 Traffic CRB		As Constructed No Revisions: Revised: Void:		<b>PLAN SHEET</b> Fiber General Notes				Project No./Code I R100-128 16221 Sheet Number 193 <b>63</b>	
						Designer: WJKjr Structure: Detailer: WJKjr Numbers:		Sheet Subset: Fiber Gen Notes Subset Sheets: 1 of 1					

## Regeneration Node Splice Table

Interstate 70 - 144 Strand Fiber Cable  
144 Strand Lateral Fiber Cable

DEVICE	144 Strand Lateral Fiber Cable				Spliced To	144 Strand Backbone Cable				SPLICE LOCATION	NODE LOCATION
	CABLE NUMBER	FIBER No.	FIBER COLOR	BUFFER COLOR		FIBER No.	FIBER COLOR	BUFFER COLOR	FIBER DIRECTION		
FROM CHAIN STATION WEST OF EJT	1	1	BLUE	BROWN		7	RED	SLATE	FROM EAST	EJT VENT BUILDING SPLICE CABINET	EJT TUNNEL
FROM CHAIN STATION WEST OF EJT	1	2	ORANGE	BROWN		8	BLACK	SLATE	FROM EAST	EJT VENT BUILDING SPLICE CABINET	EJT TUNNEL
FROM CHAIN STATION WEST OF EJT	1	3	GREEN	BROWN		8	BLACK	SLATE	FROM WEST	EJT VENT BUILDING SPLICE CABINET	EJT TUNNEL
FROM CHAIN STATION WEST OF EJT	1	4	BROWN	BROWN		7	RED	SLATE	FROM WEST	EJT VENT BUILDING SPLICE CABINET	EJT TUNNEL

## Field Device Splice Table

Interstate 70 - 144 Strand Fiber Cable  
12 Strand Lateral Fiber Cable

DEVICE LOCATION	12 Strand Lateral Fiber Cable				Spliced To	144 Strand Backbone Cable				SPLICE LOCATION	NODE LOCATION
	CABLE NUMBER	FIBER No.	FIBER COLOR	BUFFER COLOR		FIBER No.	FIBER COLOR	FIBER DIRECTION*	BUFFER COLOR		
EXISTING EB CHAIN STATION - MP 203 WEST OF SILVERTHORNE	1	1	BLUE	BLUE		7	RED	EAST	SLATE	EXISTING ITS PULL BOX	EJT CONTROL ROOM
	1	2	ORANGE	BLUE		8	BLACK	EAST	SLATE		
	1	3	GREEN	BLUE		9	YELLOW	EAST	SLATE		
	1	4	BROWN	BLUE		10	VIOLET	EAST	SLATE		
EXISTING EB CHAIN STATION - MP 205 EAST OF SILVERTHORNE	1	1	BLUE	BLUE		9	YELLOW	EAST	SLATE	EXISTING ITS PULL BOX	EJT CONTROL ROOM
	1	2	ORANGE	BLUE		10	VIOLET	EAST	SLATE		
	1	3	GREEN	BLUE		10	VIOLET	WEST	SLATE		
	1	4	BROWN	BLUE		9	YELLOW	WEST	SLATE		
WB CHAIN STATION - MP 223 EAST OF BAKERVILLE INTERCHANGE AT VMS SIGN	1	1	BLUE	BLUE		9	YELLOW	EAST	SLATE	EXISTING ITS MANHOLE	EJT CONTROL ROOM
	1	2	ORANGE	BLUE		10	VIOLET	EAST	SLATE		
	1	3	GREEN	BLUE		10	VIOLET	WEST	SLATE		
	1	4	BROWN	BLUE		9	YELLOW	WEST	SLATE		
EB CHAIN STATION - MP 228 EAST OF GEORGETOWN	1	1	BLUE	BLUE		7	RED	EAST	SLATE	EXISTING ITS MANHOLE	EJT CONTROL ROOM
	1	2	ORANGE	BLUE		8	BLACK	EAST	SLATE		
	1	3	GREEN	BLUE		8	BLACK	WEST	SLATE		
	1	4	BROWN	BLUE		7	RED	WEST	SLATE		
WB CHAIN STATION - MP 228 EAST OF GEORGETOWN	1	1	BLUE	BLUE		9	YELLOW	EAST	SLATE	EXISTING ITS MANHOLE	EJT CONTROL ROOM
	1	2	ORANGE	BLUE		10	VIOLET	EAST	SLATE		
	1	3	GREEN	BLUE		10	VIOLET	WEST	SLATE		
	1	4	BROWN	BLUE		9	YELLOW	WEST	SLATE		
EB CHAIN STATION - MP241 WEST SIDE OF TWIN TUNNELS	1	1	BLUE	BLUE		7	RED	EAST	SLATE	EXISTING ITS MANHOLE	EJT CONTROL ROOM
	1	2	ORANGE	BLUE		8	BLACK	EAST	SLATE		
	1	3	GREEN	BLUE		8	BLACK	WEST	SLATE		
	1	4	BROWN	BLUE		7	RED	WEST	SLATE		
EB CHAIN STATION - MP251 EL RANCHO	1	1	BLUE	BLUE		10	VIOLET	WEST	SLATE	EXISTING ITS MANHOLE	EJT CONTROL ROOM
	1	2	ORANGE	BLUE		9	YELLOW	WEST	SLATE		
	1	3	GREEN	BLUE		8	BLACK	WEST	SLATE		
	1	4	BROWN	BLUE		7	RED	WEST	SLATE		

\*Indicates Direction of Backbone Fiber Strand From Lateral Splice, (Towards Associated Regeneration Node For Data Flow).

William Kascek, Self/14/2007 11:29 AM Splice Table 01 Rev 3.dwg

<b>Computer File Information</b> Creation Date: 06/07/06 Initials: WJKjr Last Modification Date: See Side Panel Initials: WJKjr Full Path: Drawing File Name: See Side Panel Acad Ver. Lite 2002 Scale: HTS Units: English		<b>Sheet Revisions</b> <table border="1" style="width: 100%; height: 40px;"> <tr><td> </td><td> </td></tr> <tr><td> </td><td> </td></tr> </table>						<b>Colorado Department of Transportation</b> ITS - Colorado Traffic Management Center 425C Corporate Circle Golden, Colorado 80401 Phone: 303-512-5834 FAX: 303-512-5878 Colo Traf. Management Cntr for Region 1 - Traffic CBR		<b>As Constructed</b> No Revisions: Revised: Void:		<b>Chain Up Stations</b> Interstate 70 West Corridor Fiber Allocation Tables Designer: WJKjr Detailer: WJKjr Sheet Subset: Splice Tab Subset Sheets: 1 of 2		<b>Project No./Code</b> I R100-128 16221 Sheet Number 64/204	

William Kaseek, Self/5/13/2007 7:15 PM/Splice Table 02 Rev 3.dwg

## Fiber Resplice Splice Table

*Interstate 70 - 144 Strand Backbone Fiber Cable*

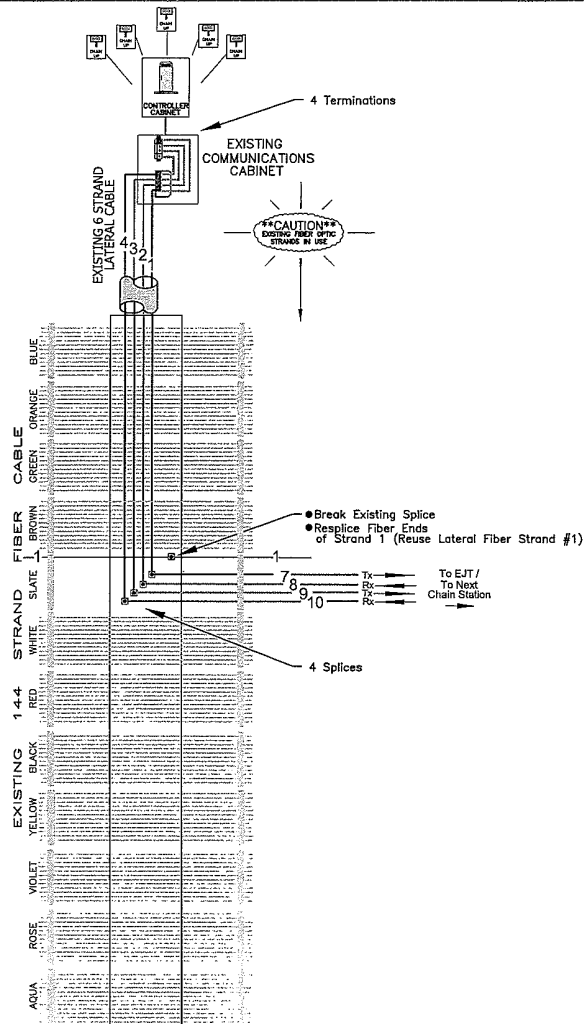
DEVICE	144 Strand Backbone Cable				SPLICE LOCATION	NODE LOCATION
	FIBER No.	FIBER COLOR	BUFFER COLOR	FIBER DIRECTION		
EXISTING CHAIN STATION - MP 203 WEST OF SILVERTHORNE	1	BLUE	SLATE	EAST and WEST	EXISTING ITS PULL BOX	EJT TUNNEL
EXISTING CHAIN STATION - MP 205 EAST OF SILVERTHORNE	2	ORANGE	SLATE	EAST and WEST	EXISTING ITS PULL BOX	EJT TUNNEL
EXISTING CHAIN STATION - MP 203 WEST OF SILVERTHORNE	1	BLUE	SLATE	EAST and WEST	EJT VENT BUILDING SPLICE CABINET	EJT TUNNEL
EXISTING CHAIN STATION - MP 205 EAST OF SILVERTHORNE	2	ORANGE	SLATE	EAST and WEST	EJT VENT BUILDING SPLICE CABINET	EJT TUNNEL

Computer File Information		Sheet Revisions		Colorado Department of Transportation		As Constructed	Chain Up Stations Interstate 70 West Corridor Fiber Allocation Tables		Project No./Code
Creation Date:	06/07/06	Initials:	WJKjr	<input type="checkbox"/>		No Revisions:			1 R100-128
Last Modification Date:	See Side Panel	Initials:	WJKjr	<input type="checkbox"/>		Revised:	Designer: WJKjr	Structure Numbers	16221
Full Path:				<input type="checkbox"/>		Detailer:	WJKjr		
Drawing File Name:	See Side Panel			<input type="checkbox"/>		Void:	Sheet Subset: Splice Tab	Subset Sheets: 2 of 2	Sheet Number 195 <b>65</b>
Acad Ver. Lite 2002	Scale: NTS	Units: English		<input type="checkbox"/>					

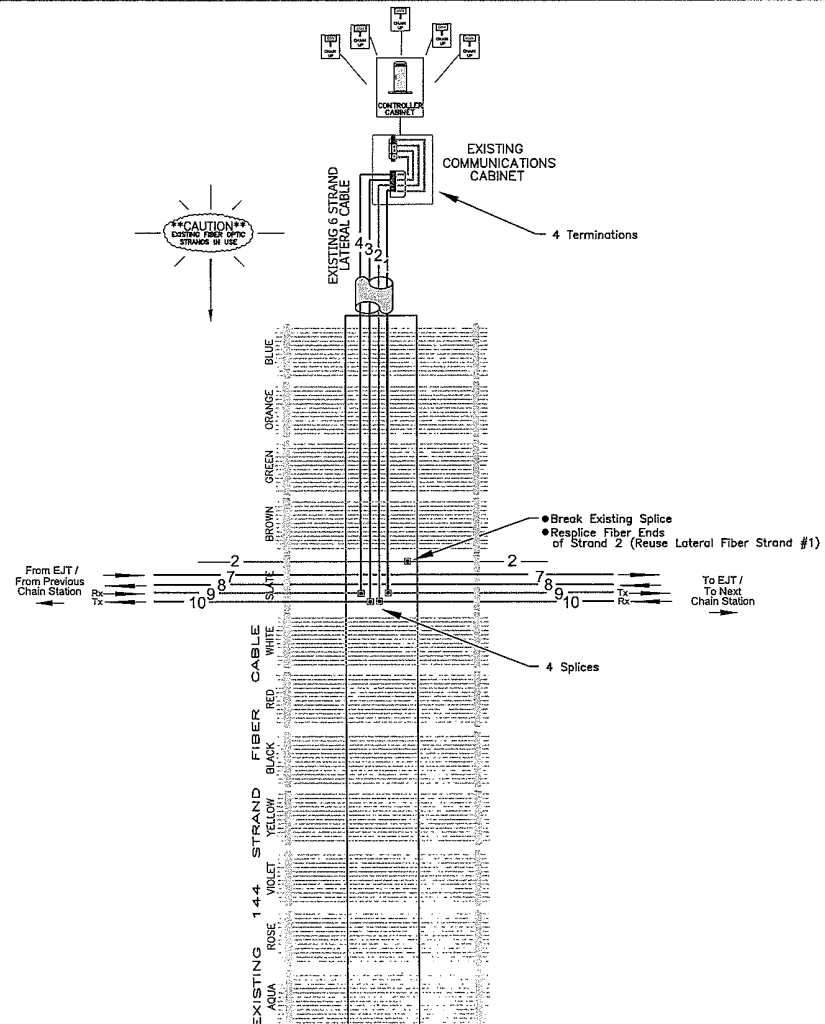


ITS - Colorado Traffic Management Center  
4250 Corporate Circle  
Golden, Colorado 80401  
Phone: 303-512-5834 FAX: 303-512-5878

Colorado Department of Transportation  
Colorado Traf. Management Cntr for Region 1 - Traffic CBR



EXISTING ITS PULL BOX  
EB SHOULDER  
See Conduit Plans For Location  
Existing EB Chain Station  
-MP 203 WEST OF SILVERTHORNE-



EXISTING ITS PULL BOX  
WB SHOULDER  
See Conduit Plans For Location  
Existing EB Chain Station  
-MP 205 EAST OF SILVERTHORNE-

Computer File Information	
Creation Date:	4/13/2007 Initials: WJKjr
Last Modification Date:	See Side Panel Initials: WJKjr
Full Path:	
Drawing File Name:	See Side Panel
ACAD Ver.	ACAD 200LT Scale: NTS Units: English

Sheet Revisions	

Colorado Department of Transportation  
 ITS - Colorado Traffic Management Center  
 425C Corporate Circle  
 Golden, Colorado 80401  
 Phone: 303-512-5834 FAX: 303-512-5878  
 ITS - CTMC With Region 1 Traffic CBR

As Constructed	
No Revisions:	
Revised:	
Void:	

Interstate 70 West Corridor Chain Stations Fiber Splice Diagrams	
Designer: WJKjr	Structure Numbers
Detailer: WJKjr	Numbers
Sheet Subst: Fiber Allocation Subset Sheets: 1 of 5	

Project No./Code	
I R100-128	
16221	
Sheet Number	196