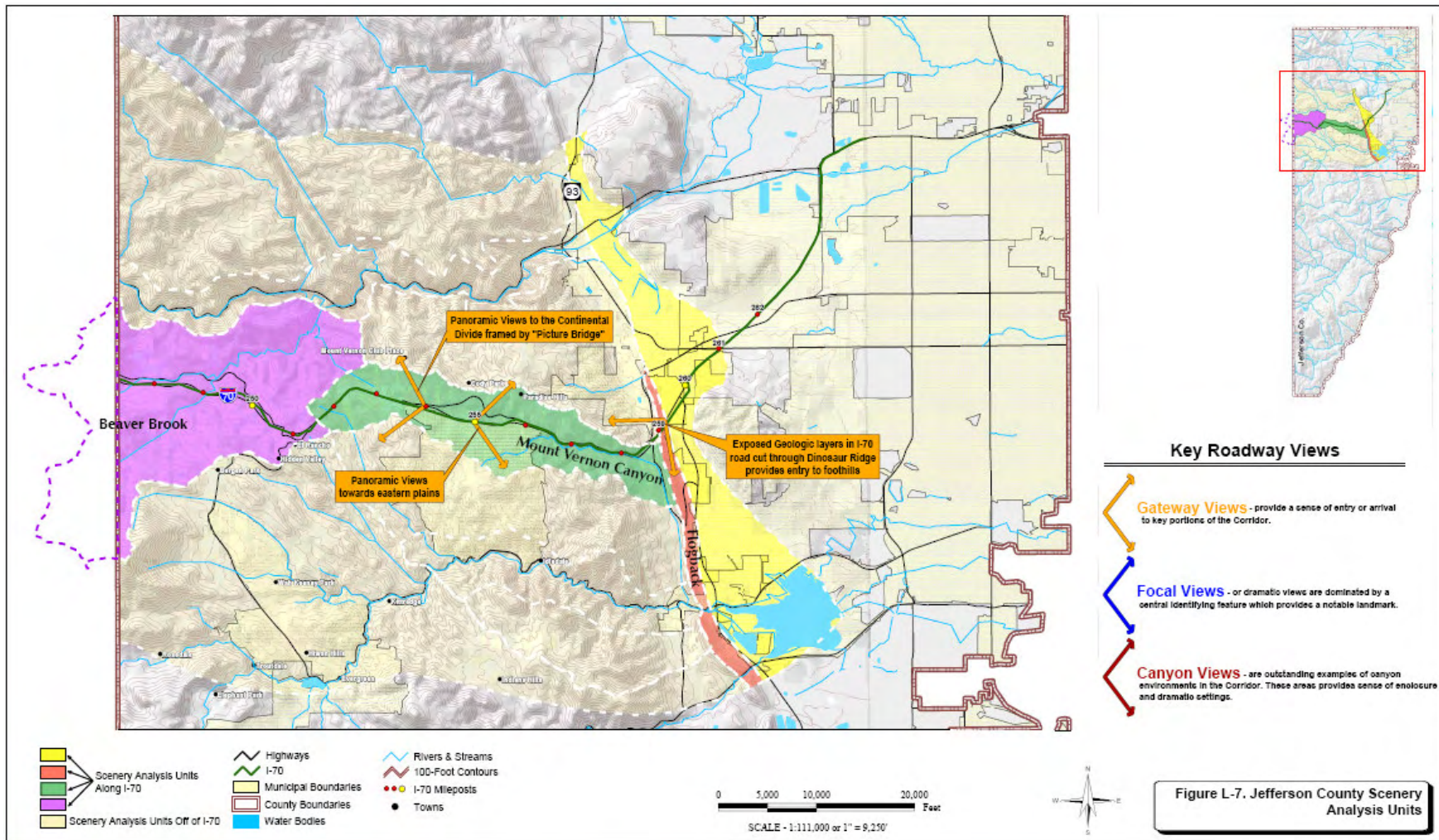


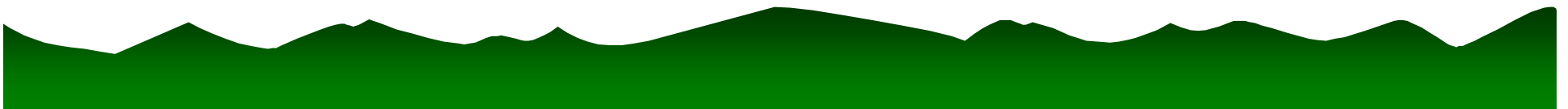
Jefferson County Scenery Analysis Units



Aesthetic Core Value

**Aesthetics will be inspired
by the surroundings,
protect scenic integrity,
and incorporate
the context of place.**

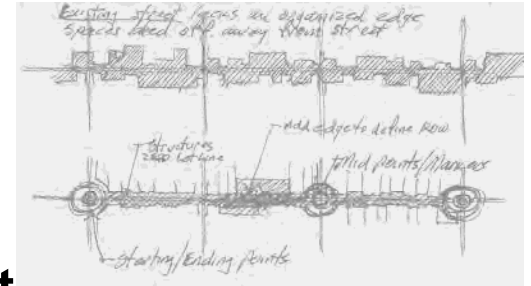
**Timeless design continues the
corridor's legacy.**



QUESTIONS FOR ROUND TABLE DISCUSSIONS

What function should aesthetic treatments serve?

- Nationally
- Regionally (State)
- Locally



What are potential visual themes that can support function?

- Interstate travel
- Recreational destinations
- Historic districts



Should there be a consistent visual treatment for the corridor or multiple treatments?

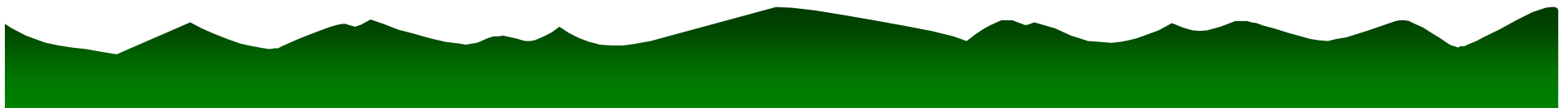
- Vail Pass
- Glenwood Canyon



What will happen with the work we did today?

Your comments will be requested through email.

The final guiding principles, major themes and gateways will be presented at the County Working Groups.



Visual Characteristics

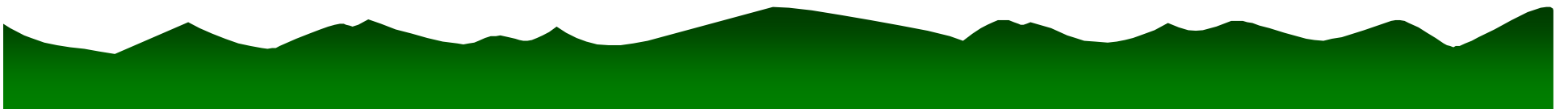
“How do we look at something?”

Form

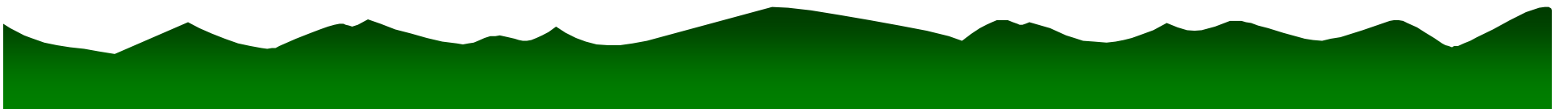
Line

Color

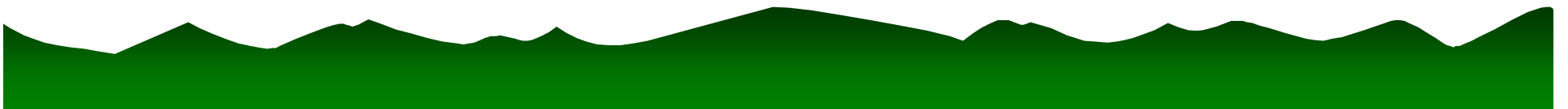
Texture



Visual Characteristics



Visual Characteristics



Visual Characteristics



Visual Characteristics

