



I-25: The New Pueblo Freeway



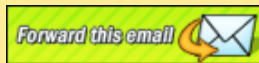
ILEX STREET TO CITY CENTER DRIVE

Colorado Department of Transportation

November/December 2018 eNewsletter

In This Issue

[2018 Accomplishments](#)
[Ilex Project Benefits](#)
[Pueblo Community](#)
[Spotlight: JKS Industries](#)
[CDOT Face to Face](#)
[Conference](#)
[How to Merge](#)
[For More Information](#)



Please forward/share this email with others who may have an interest in the Ilex Design-Build project.

Current Design Work

- Landscaping & irrigation plans complete
- ITS Design nearing completion

Current Construction

[CLICK HERE](#) to view Construction Update - August 2018

Project Schedule

Northbound I-25: Spring 2015 to Spring 2018

Southbound I-25: Fall 2017 to Winter 2018

Bridge Rehabilitations: Summer 2015 to Spring 2018

Final Configuration: December 2018

Project Completion: April 2019

2018 Accomplishments

It has been an extremely busy year on the I-25/Ilex Design-Build project! As it heads into the final stretch, sometimes it's hard to remember all of the accomplishments, big and small, over the past year.

Completed rehabilitation of bridges:

- Indiana (*includes widening in median*)
- Northern Avenue Bridge over I-25
- Mesa Bridge over I-25
- Green Truss Bridge on US 50 over the Arkansas (*1 lane open to traffic, median work for the approaches being finished*)
- I-25 over Santa Fe (*includes widening in median*)

Completed new structures (*staining to be completed next Spring*):

- I-25 over Gruma Street (*providing for the future expansion of the Riverwalk*)
- I-25 over Union Pacific and BNSF Railroads* (*providing for future extension of Alan Hamel*)
- I-25 over Thomas Phelps Creek Trail and Union Pacific Railroad
- I-25 over D-Street
- Mechanically Stabilized Earth (MSE) Retaining walls entire length of project



I-25 bridge over UPRR and BNSF

Other Milestones:

- I-25 from Santa Fe to City Center Drive completed including drainage and safety features*
- Southbound interchange at Santa Fe*
- Northbound interchanges at D Street & City Center Drive*
- Lighting and signing
- Clark Cul-de-sac and D Street roadway & drainage

**Final lift of asphalt scheduled for Spring*

Stay Connected

Website:
[Colorado Info Project](#)

Email:
i25ilex@PublicInfoTeam.com

Hotline:
(719) 470-2270

Quick Links

[Project Website](#)
[CDOT Website](#)

Sign Up to Receive Enewsletters

To receive future Ilex Design-Build project eNewsletters and construction notices, send an email to i25ilex@PublicInfoTeam.com

What the Project Involves

The Ilex interchange is the first segment to be constructed as part of the New Pueblo Freeway.

The project consists of replacing bridges on I-25 between Ilex Street and City Center Drive in Pueblo. Work includes rehabilitation of bridges on northbound I-25 over Santa Fe Avenue (US 50C), I-25 over Indiana Avenue, on the Santa Fe Avenue (US 50C) bridge over the Arkansas River, and on Northern Avenue and Mesa Avenue over I-25.

Structurally deficient bridges on I-25 over Gruma Drive, the Union Pacific Railroad, and Ilex Street will also be removed and replaced.

Interchange ramps will be lengthened to provide safer transitions onto and off of the Interstate, especially the 1st Street ramp to southbound I-25. Roadway curves will be softened to



Green truss bridge



D Street interchange

Major work to be completed by April 2019:

- Landscape/seeding
- Finishing and contouring of fill slopes
- Sediment and detention ponds
- Top lift of asphalt
- Completion of Thomas Phelps Creek Trail
- Staining retaining walls and bridges
- Final striping



[CLICK HERE](#) to view November Progress Video

ILEX Project Benefits Pueblo Community

A project like the I-25/Ilex Design-Build project positively affects a community in so many ways beyond improving traffic. One of the primary benefits is boosting the local economy by using local contractors, suppliers and hiring local staff. According to Forbes, for every \$1 spent at locally-owned businesses, \$0.68 stays in the community, and for every \$1 spent at a national chain, \$0.43 stays in the community.

The Colorado Department of Transportation (CDOT) and contractor Flatiron Constructors, Inc. have contributed an as significant amount to the City of Pueblo's economy.

Estimates to date:

Labor \$22,746,601.68 (number reflects direct paycheck amount that could then be spent in local economy)

Materials \$25,792,829.08

"Wages paid to local employees are then re-spent locally at gas stations, restaurants, dry cleaners, supermarkets, and for other day-to-day expenses," said CDOT Project Manager

improve visibility and provide a smoother ride for motorists.

Local roadway improvements are included at D Street, Ilex Street, Bennett Street cul-de-sac, Clark Street cul-de-sac, and along Santa Fe Avenue.

Bridges will be widened at City Center Drive and I-25 over Santa Fe Avenue (widened to the median).

Noise abatement will also occur along some segments of I-25.

Project Partners

- Colorado Department of Transportation
- Federal Highway Administration
- City of Pueblo
- Pueblo County
- The Community


Funding

State of Colorado revenues from a safety fee placed on vehicle registrations have helped fund the Ilex Design-Build project.

Funding sources for the project:

Bridge Enterprise

RAMP (Responsible Acceleration of Maintenance and Partnerships)

 Like us on Facebook

Follow us on 

Jennifer Billings. "A project the size of Ilex has made a significant contribution to our community."

The Ilex project employed at least 14 different local subcontracting companies to provide services related to construction that include traffic control, labor, concrete work, flatwork, paving, crane service, landscaping, signs, fuel, trucking and materials.

The project team is proud not only of the work accomplished on Ilex, but also their contribution to the community in so many ways.

Ilex Spotlight: JKS Industries



South Viaduct Demo Work

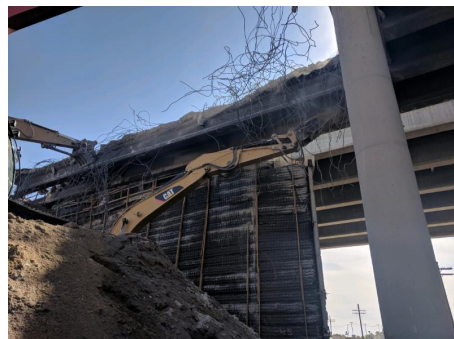
The I-25/Ilex Design-Build Project is a complicated project and requires several specialized contractors to complete the many different aspects. This month we spotlight JKS Industries, LLC.

JKS Industries is a Colorado-based, veteran-owned company that performed the demolition of the former I-25 northbound and southbound viaduct. They employ 45 highly trained individuals specializing in road and bridge demolition, asbestos abatement, structural demolition, lead-based paint abatement, mold remediation and select interior demolition.

JKS has worked on five different projects for the Colorado Department of Transportation in 2018, with the Ilex project being the largest demolition project this year.

"The elevated sections adjacent to live traffic coupled with the four spans over the railroad tracks were probably the most challenging," said Jeffrey Knight, President of JKS Industries.

"Delivering on our



Demo - Girder Removal

promises to the Ilex project team remains our proudest accomplishment."

"JKS Industries, LLC. would like to thank CDOT, Flatiron, Atkins, Crimson Engineering, RMS Cranes and Blasi Trucking for their respective contributions to this critical phase of the project, and we recognize that strong leadership and key partnering is critical to successful projects," said Knight.

CDOT Face to Face Conference Held in Pueblo

The Colorado Department of Transportation's (CDOT) statewide environmental Face to Face Conference held in Pueblo the week of November 9 highlighted a 'showcase project'.

You guessed it - this year the Ilex Design-Build project was chosen as the showcase! Each Face to Face event gives the CDOT environmental personnel a first-hand look at environmental issues across the state before narrowing their focus on a regional project. The project showcase began with several presentations highlighting environmental pre-construction and construction related issues and concerns, and how the project team came together to solve each issue. The Ilex project team presented the history of the project, the preconstruction work, materials management, migratory birds, historic mitigation, and other innovative environmental mitigation strategies implemented by the project.



CDOT Project Manager Jennifer Billings gives a tour of the Ilex project.



Group photo of the CDOT environmental staff

Following the presentation, the group was escorted throughout the Ilex project site for an up close look at a unique, and complicated project led by Ilex Project Manager

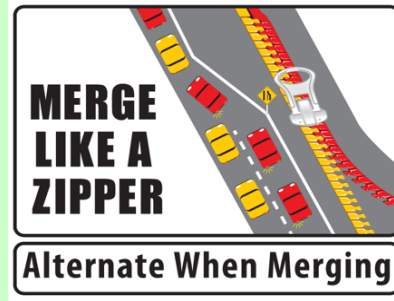
Jennifer Billings, and CDOT Resident Engineer Joe DeHeart. The Ilex team was very proud to show off this project to the rest of the state!

The Zipper Merge: Techniques to Keep Traffic Moving

Merge points are specifically set up for vehicles to merge from two lanes into one lane in a "zipper fashion." This keeps traffic keeps flowing. Each car should alternate "zipper fashion" into the remaining open lane just before

the point of closure.

Here's how the Zipper Merge works: When there is a lane closure ahead, drivers should continue to drive in both lanes equally. Just before the lane ends, cars should take turn filling in the open lane carefully and resume full speed. In a Zipper Merge, please be respectful of those who wait to merge until just before the lane ends; they doing it correctly.



Check out this short [CDOT video](#) on Merging.

Additional Project Information

For more information about the I-25 Ilex Design-Build project, visit the [CDOT website project page](#). To receive future Ilex Design-Build project e-newsletters and construction notices, send an email to i25ilex@PublicInfoTeam.com requesting to be added to the email list.

Colorado Department of Transportation Ilex Project Office,
200 South Santa Fe Avenue, Pueblo, CO 81003

[SafeUnsubscribe™ {recipient's email}](#)

[Forward this email](#) | [Update Profile](#) | [About our service provider](#)

Sent by michelle@bachmanpr.com in collaboration with

Constant Contact 

Try it free today