

Region 2 Bridge Bundle

Bridge Breakdown



COLORADO
Department of Transportation

Three Corridors:

Colorado Highway 9

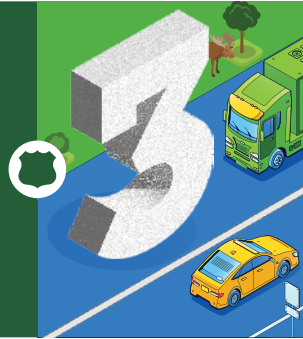
3 structures between Cañon City and Alma

US Highway 24

5 structures east of Florissant to Antero Junction

US Highway 350

9 structures between La Junta and Trinidad



Replace 17 structures in central and southeastern Colorado



\$43 million project



Updated structures will have a 100-year lifespan



Project completion slated for late 2024



Essential to mobility in central Colorado

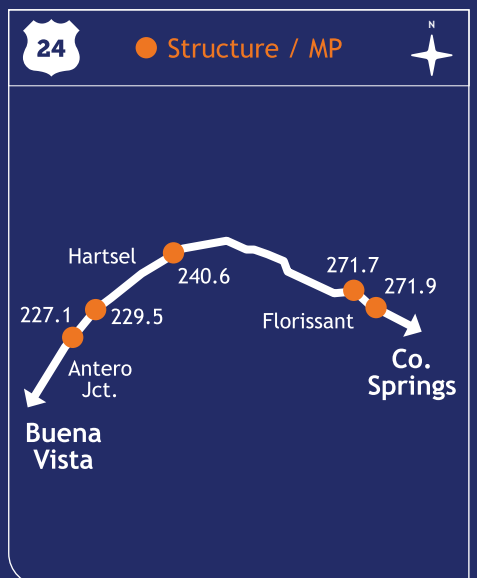


Supports intra- and interstate-commerce, particularly the movement of agricultural products and access to tourist destinations

24 US Highway 24 (Mountain Region)



- Provides route across the Rocky Mountains
- Vital economic corridor connection from Front Range communities to Western Slope communities
- One of only three major east/west alternatives in Colorado



Project Contact Information

Project Hotline: 800-811-2067

Web: codot.gov/projects/region2bridges

Sign up for email updates: cdotbridgesR2@gmail.com