



Interstate 25 Exit 108 Interchange Reconstruction and Rest Area Project Virtual Public Engagement



Project Background

Existing Exit 108 Interchange at Purcell Boulevard

Critical Safety & Infrastructure Risks

Frequent Flooding

Poor drainage causes box culvert and intersections to flood during storm events.

Substandard Design

Poor ramp geometry, minimal shoulders, and highly restricted sight distances throughout.



Severe Operational Bottlenecks

Complex Intersections

Non-standard 6-point (west) and 5-point (east) stop-controlled ramp configurations.

Freight Constraints

Single-lane box culvert blocks and restricts large truck movements onto westbound Purcell Blvd.



A truck attempting to drive through the box culvert.

Capacity Strain and Lack of Redundancy

Demand Deficit

Current layout fails to meet modern travel demands and handle informal park-and-ride commuter traffic.

Single Corridor Dependency

No alternative route for NB I-25 freight traffic if the interstate is closed.





Project Background

Closure of the Existing Pueblo Rest Areas

1. Prior to 2020 (The Decline)

System Failures

Facilities reached the end of their useful life.

No Utility Access

Operated without municipal water or sewer connections.

Infrastructure Deficit

Lacked access to potable water and wastewater facilities were failing.



2. 2020 Closure (The Turning Point)

Pandemic Shutdown

Closed at the start of the COVID-19 pandemic.

No Potable Water

Lack of water for handwashing forced immediate closure.

Location Impact

Affected both rest areas at northbound mile post 111 and southbound MP 115.



3. Post-2020 (The Current Reality)

Vandalism & Looting

Both sites suffered severe, ongoing property damage.

Too Costly to Repair

Fixing damage and the infrastructure deficits would exceed \$18M.

A Smarter Direction

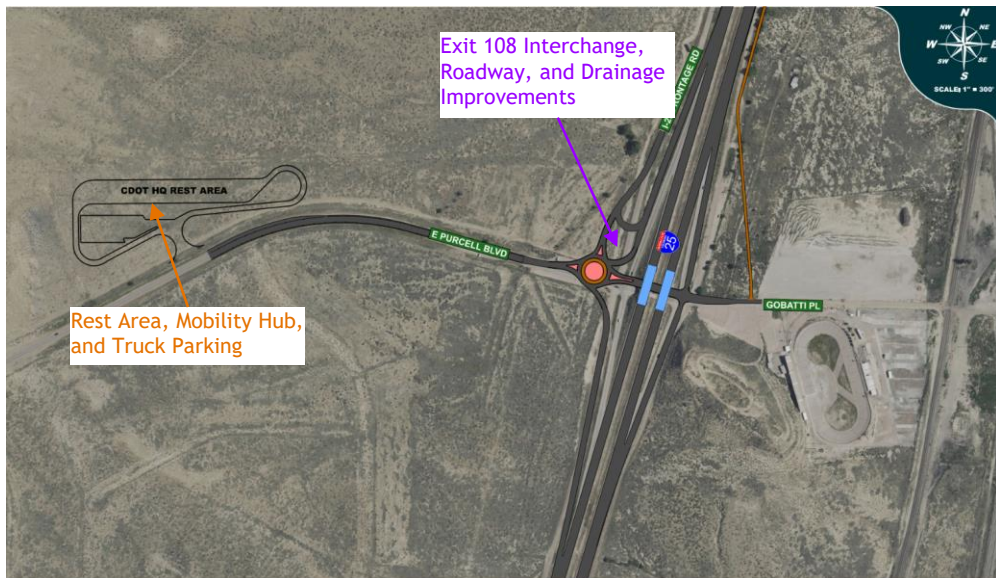
Consolidate operations to a location with access to public water and sewer





Future Project Interchange Reconstruction and Rest Area

New Rest Area and Interchange to Solve Multiple Deficiencies



Exit 108 Interchange Improvements
Improve connections between Purcell Boulevard, I-25 and the new rest area.

Redundancy
Alternative route if I-25 is closed.

New Rest Area
New interchange allows for a single rest area to serve both directions of I-25 for cost savings.

Strategic Location
Provides access to municipal water and sewer.

Multi-Modal Integration
Rest area has capacity to add a transit hub, park & ride spaces, and increase freight parking.



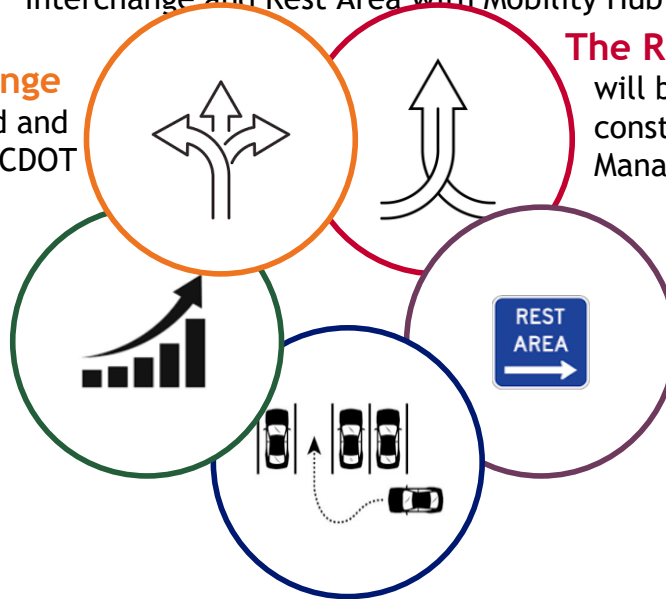
Project Background

Two Projects, One Goal

Three projects will be designed and constructed together.

Interchange and Rest Area with Mobility Hub

The Interchange will be designed and constructed by CDOT Region 2.



The Rest Area & Mobility Hub will be designed and constructed by CDOT Property Management.

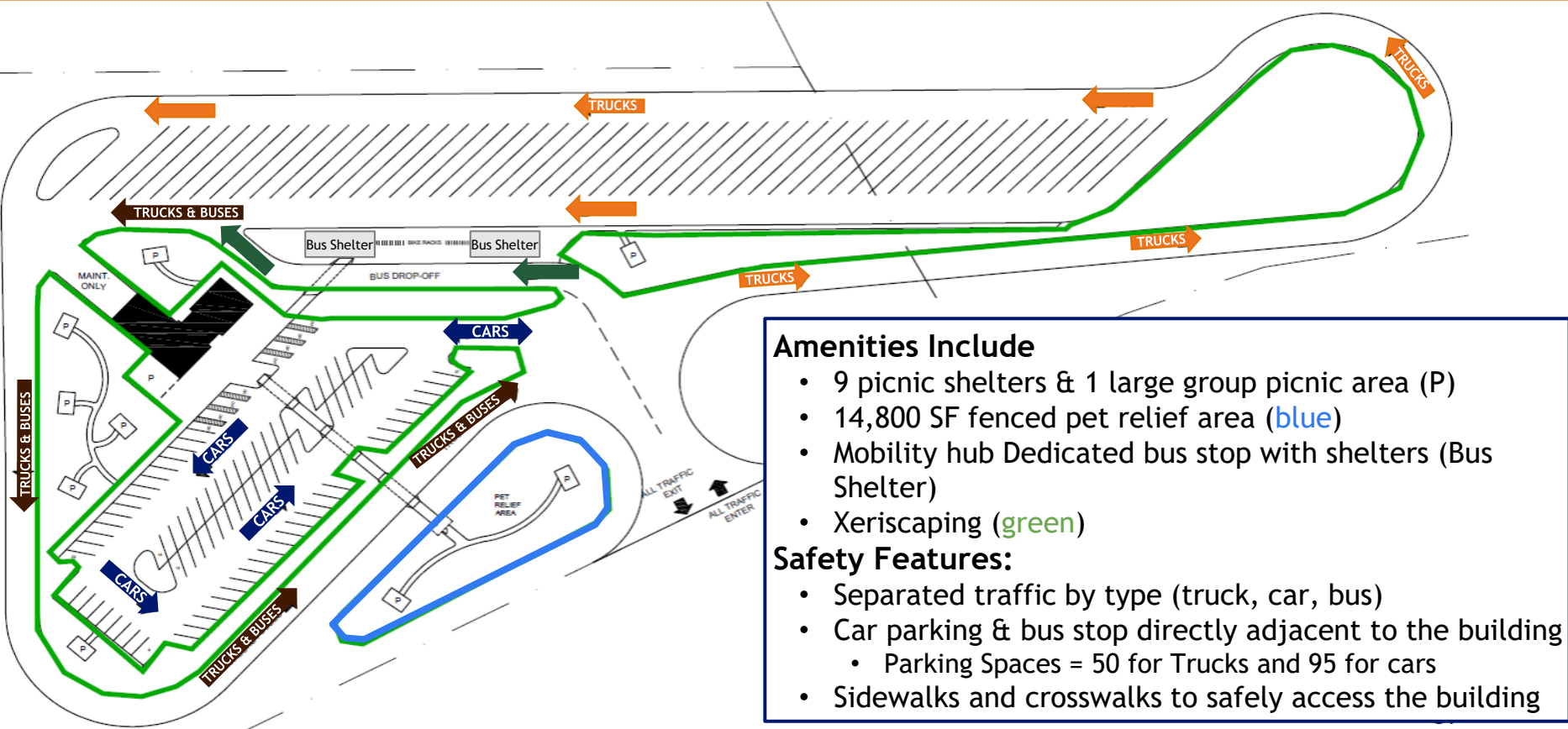
Interchange construction is scheduled to begin in the spring of 2027.

Rest Area construction is scheduled to begin late winter/early spring of 2028.

Late Winter/Early Fall 2028
Estimated completion of both projects.



Rest Area Planned Improvements - Exterior



Amenities Include

- 9 picnic shelters & 1 large group picnic area (P)
- 14,800 SF fenced pet relief area (blue)
- Mobility hub Dedicated bus stop with shelters (Bus Shelter)
- Xeriscaping (green)

Safety Features:

- Separated traffic by type (truck, car, bus)
- Car parking & bus stop directly adjacent to the building
 - Parking Spaces = 50 for Trucks and 95 for cars
- Sidewalks and crosswalks to safely access the building



Rest Area Planned Improvements - Interior

Maximize Capacity

- Two restrooms for men, 12 fixtures
- Two restrooms for women, 12 fixtures
- Two family restrooms

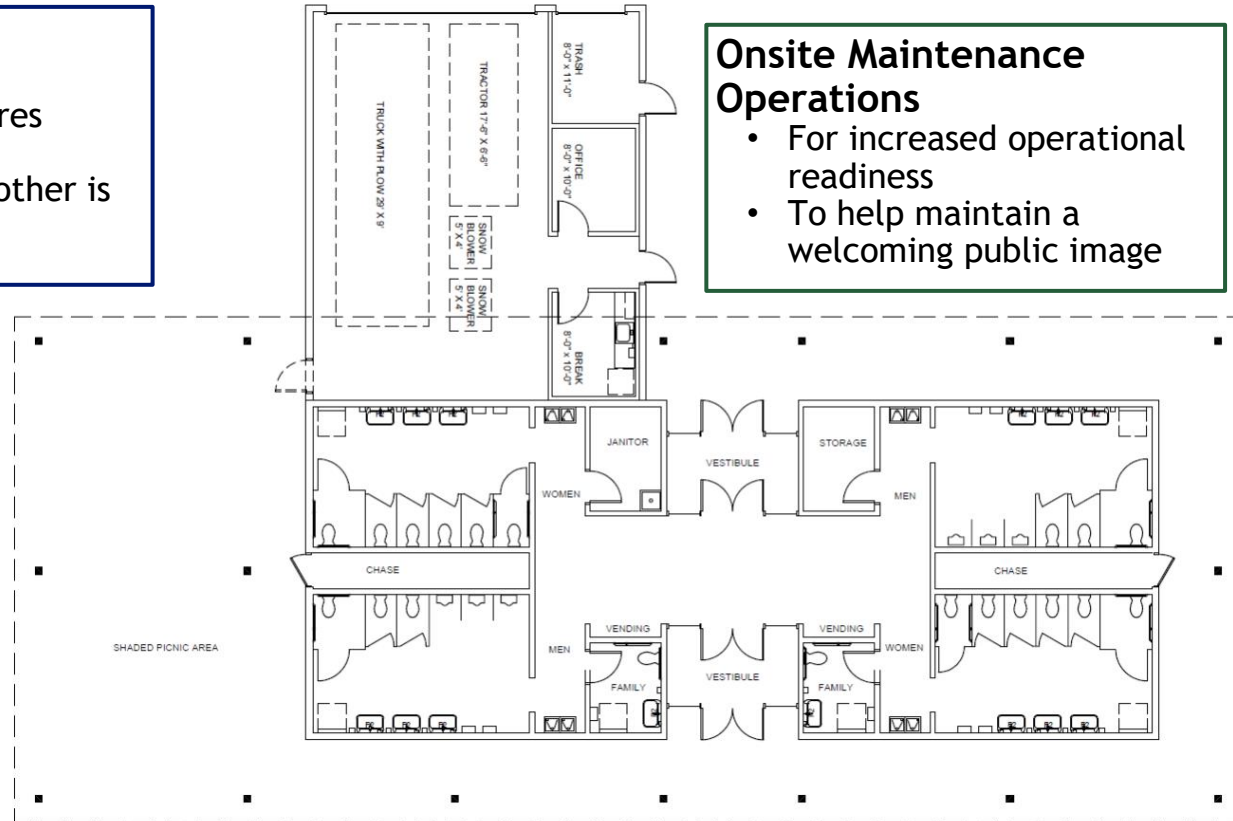
One restroom is always available if the other is closed for cleaning or maintenance.

Onsite Maintenance Operations

- For increased operational readiness
- To help maintain a welcoming public image

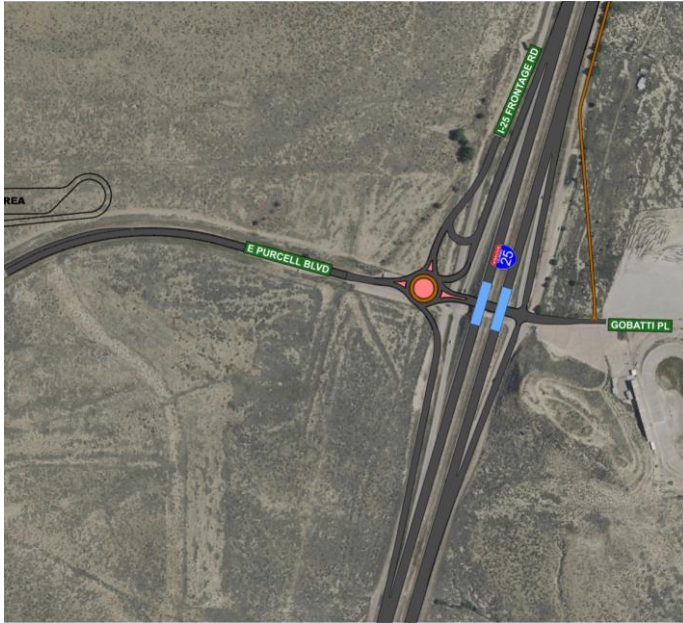
Interior Amenities

- Energy-efficient airlocks at both vestibules.
- Large central corridor for better flow.
- Storage and vending machine space.
- Solar panels on rooftop.
- Overhanging shade structure (dashed line) that prioritizes natural cooling and anchors the building within its Southwestern surroundings.





Interchange Planned Improvements



Interstate

- Raise elevation of I-25 by 6' - 8'
- New signage
- Improved ramp geometry
- Frontage road improvements

Underpass

- 3-span structure with minor retaining walls and sloped paving

Interchange

- 5-legged roundabout on the west side
- Stop-controlled intersection on the east side

Purcell Blvd

- Add 6 ft shoulders to the existing two 12 ft through lanes from the interchange to the rest area (1.5 miles)
- Right turn lane for Rest Area

Improved Drainage Throughout



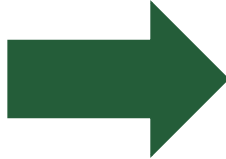
Rest Area and Interchange Virtual Public Outreach

Community Advisory Team

CDOT assembled local civic and community leaders to guide the Exit 108 Interchange and Rest Area projects.

Community Advisory Team Goals and Objectives

- Engage the community
- Improve operational characteristics
- Operational cost savings
- Improve public safety
- Design and construct a quality project
- Meet schedule and budget



Opportunities for Public Engagement

Following this presentation, you will be asked to provide feedback on the following topics:

Rest Area

- Exterior building materials
- Potential subjects for the rest area interpretive elements, such as historic maps, panels, storyboards, etc.

Interchange

- Colors for the roundabout and bridge



Virtual Public Outreach

Rest Area Exterior Building Material Selection

Option 1:
Wood +
Stone



Option 2:
Stone



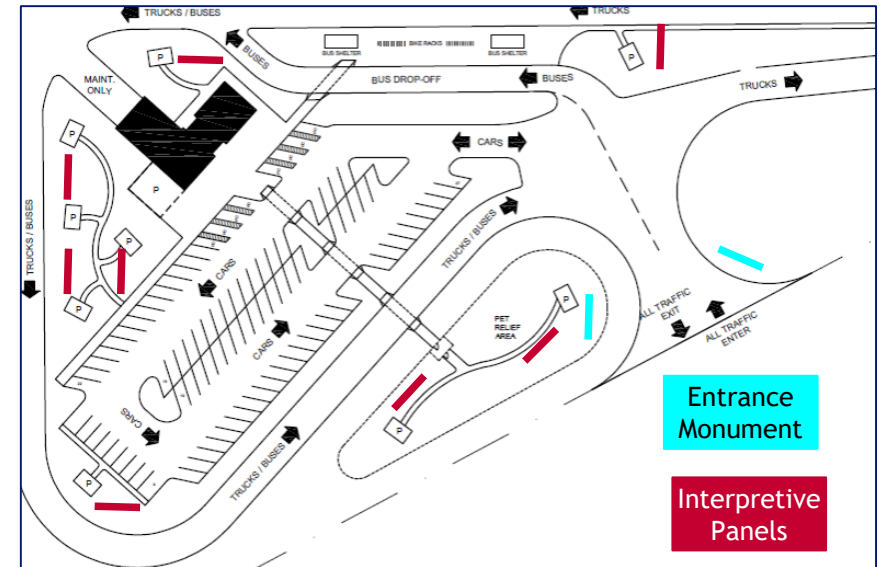
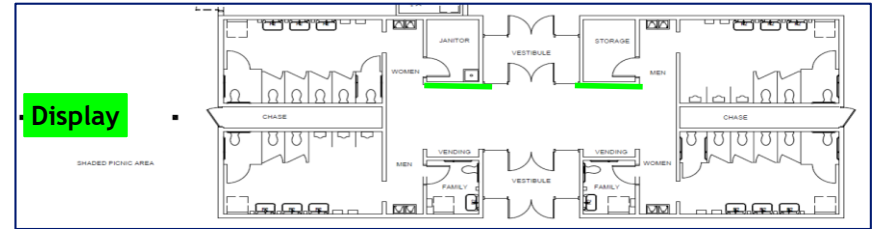


Virtual Public Outreach Rest Area Interpretive Design Topics

Which interpretive topics matter most to you? Help us choose the stories to feature:

1. Evolution of Pueblo & Pueblo West
2. Scenic byways
3. Fountain creek watershed
4. Multicultural history of the area
5. Beacon Hill paleontology
6. Rest Area closure and re-opening
7. Eden train wreck tragedy
8. Pueblo chile
9. Home of Heroes
10. Spanish influence

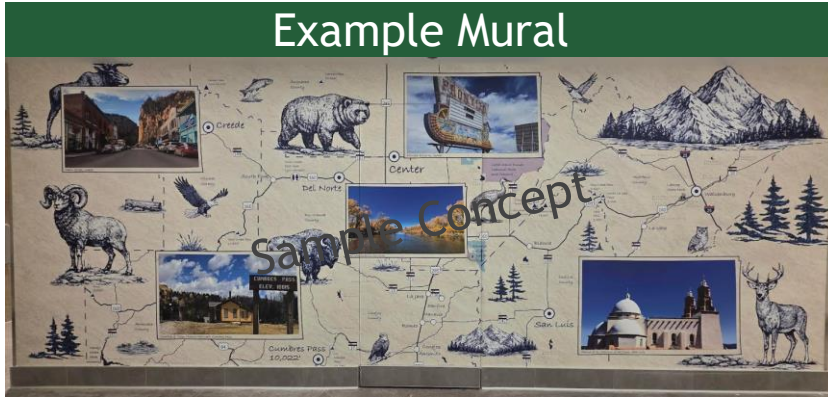
See the next slide for example interpretive design elements





Virtual Public Outreach Rest Area Interpretive Design Examples

Example Mural



Example Wall Displays



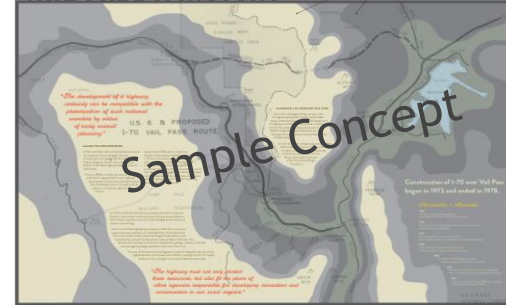
Example Exterior Interpretive Panels



Example Entrance Sign



VAIL PASS A HISTORY





Virtual Public Outreach Interchange Color Selection

Option #1: Brown Palette

- Bridge rails
- Abutments
- Piers
- Wingwalls

20460
Mushroom
(semi-gloss)

- Girders Exterior

10075
Brown
(gloss)

Option #2: Beige Palette

- Bridge rails
- Abutments
- Piers
- Wingwalls

33722
Yellow
(flat/matt)

- Girders Exterior

30257
Tan,
Earth Yellow
(flat/matt)





Virtual Public Outreach Interchange Color Selection

Option #1: Brown Palette Match

- Roundabout center and median paving

10075
Brown
(gloss)



Option #2: Beige Palette Match

- Roundabout Center and Median Paving

30257
Tan,
Earth Yellow
(flat/matt)





Virtual Public Engagement

We value your input! Please share your feedback using the following methods:

[Exit 108 Rest Area And Interchange Virtual Public Engagement Survey](#)

For more information about the Interstate 25 Exit 108 Interchange Reconstruction and Rest Area Project, please see our webpage:

codot.gov/projects/studies/i25exit108interchange



Virtual Public Engagement Contacts

Team Representative:

Hope Wright

CDOT Rest Areas and Buildings Asset Manager

hope.wright@state.co.us

720-237-6173

Media Contact:

Amber Shipley

SE Colorado CDOT Communications Manager

Amber.shipley@state.co.us

303-594-4143