

Legend

- Noise Receivers
- Mapbook Grid
- Highways
- Railroad
- Major Arterial

N
W ——— E
S

0 0.5 1 2 Miles

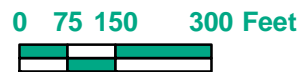
Index Map

Created by FHU for the purpose of displaying Noise receivers. 01\08\07



Legend

- Noise Receivers
- Mapbook Grid
- Highways
- Railroad



AD24

Created by FHU for the purpose of displaying Noise receivers. 01\08\07



Legend

- Noise Receivers
- Highways
- ▭ Mapbook Grid
- Railroad

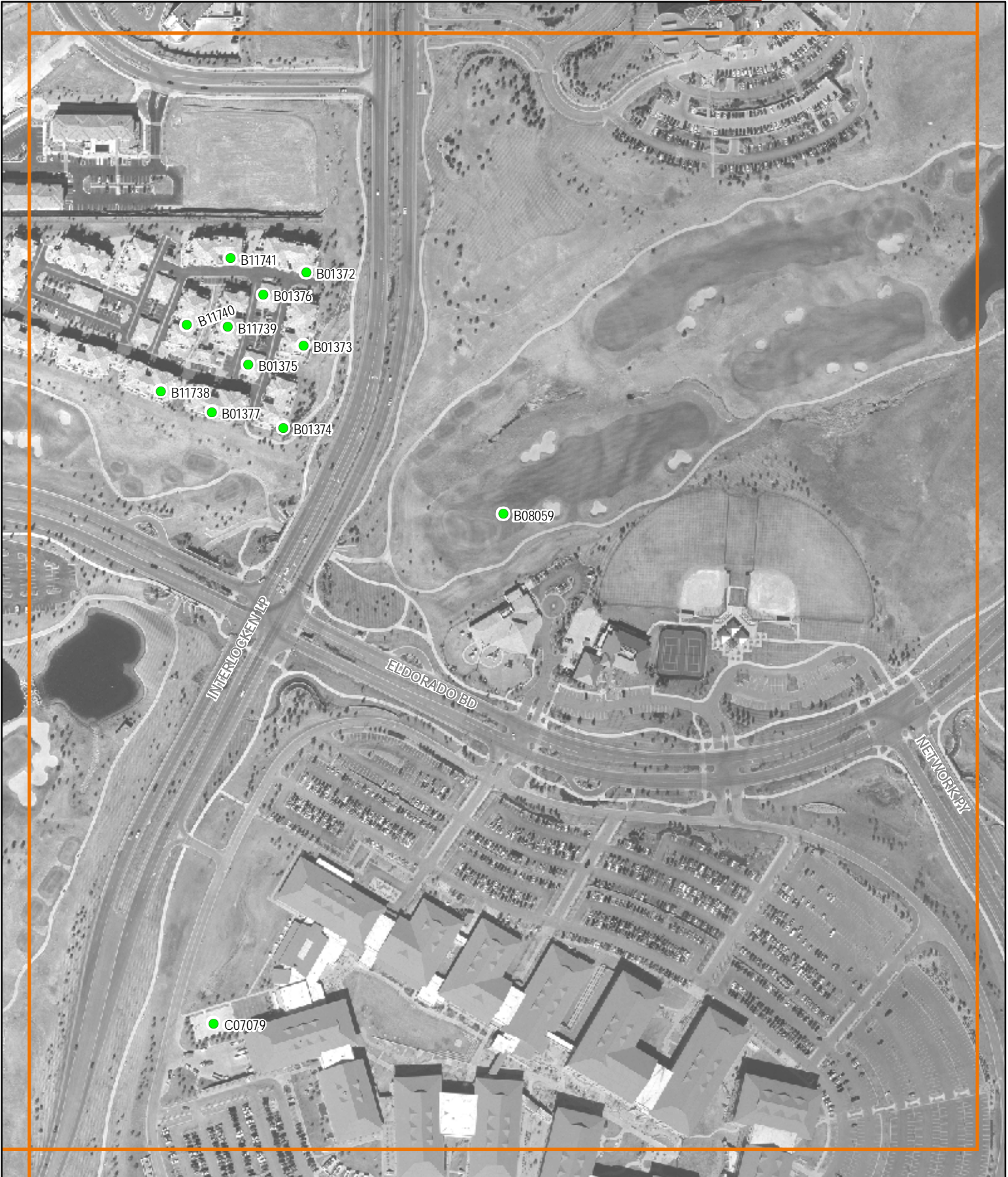


0 75 150 300 Feet



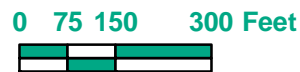
AF24

Created by FHU for the purpose of displaying Noise receivers. 01/08/07



Legend

- Noise Receivers
- Highways
- Mapbook Grid
- Railroad



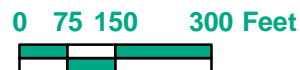
AG24

Created by FHU for the purpose of displaying Noise receivers. 01/08/07



Legend

- Noise Receivers
- Highways
- Mapbook Grid
- Railroad



AH22

Created by FHU for the purpose of displaying Noise receivers. 01/08/07



Legend

- Noise Receivers
- ~ Highways
- Mapbook Grid
- Railroad



0 75 150 300 Feet



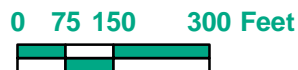
AH23

Created by FHU for the purpose of displaying Noise receivers. 01/08/07



Legend

- Noise Receivers
- Highways
- Mapbook Grid
- Railroad



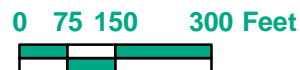
AI20

Created by FHU for the purpose of displaying Noise receivers. 01\08\07



Legend

- Noise Receivers
- Highways
- Mapbook Grid
- Railroad



AI21

Created by FHU for the purpose of displaying Noise receivers. 01/08/07



Legend

- Noise Receivers
- Mapbook Grid
- Highways
- Railroad



0 75 150 300 Feet



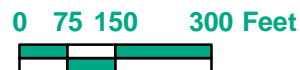
AN19

Created by FHU for the purpose of displaying Noise receivers. 01/08/07



Legend

- Noise Receivers
- Highways
- Mapbook Grid
- Railroad



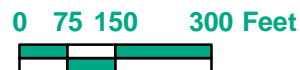
AO13

Created by FHU for the purpose of displaying Noise receivers. 01/08/07



Legend

- Noise Receivers
- Highways
- Mapbook Grid
- Railroad



AO15

Created by FHU for the purpose of displaying Noise receivers. 01/08/07



Legend

- Noise Receivers
- Highways
- Mapbook Grid
- x-x- Railroad



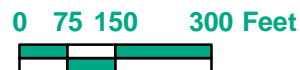
AP11

Created by FHU for the purpose of displaying Noise receivers. 01/08/07



Legend

- Noise Receivers
- ~ Highways
- Mapbook Grid
- Railroad



AP15

Created by FHU for the purpose of displaying Noise receivers. 01/08/07



Legend

- Noise Receivers
- Highways
- Mapbook Grid
- Railroad



0 75 150 300 Feet



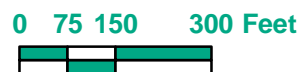
AP19

Created by FHU for the purpose of displaying Noise receivers. 01/08/07



Legend

- Noise Receivers
- Highways
- Mapbook Grid
- Railroad



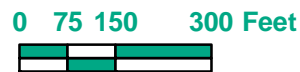
AQ14

Created by FHU for the purpose of displaying Noise receivers. 01/08/07



Legend

- Noise Receivers
- Highways
- Mapbook Grid
- - - Railroad



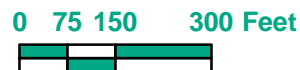
AQ18

Created by FHU for the purpose of displaying Noise receivers. 01/08/07



Legend

- Noise Receivers
- Highways
- Mapbook Grid
- Railroad



AQ20

Created by FHU for the purpose of displaying Noise receivers. 01\08\07



Legend

- Noise Receivers
- Highways
- Mapbook Grid
- Railroad



AR11

Created by FHU for the purpose of displaying Noise receivers. 01/08/07



Legend

- Noise Receivers
- ~ Highways
- Mapbook Grid
- Railroad



0 75 150 300 Feet



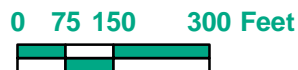
AR13

Created by FHU for the purpose of displaying Noise receivers. 01/08/07



Legend

- Noise Receivers
- Mapbook Grid
- Highways
- Railroad



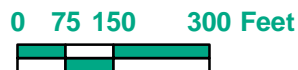
AR19

Created by FHU for the purpose of displaying Noise receivers. 01/08/07



Legend

- Noise Receivers
- Highways
- Mapbook Grid
- Railroad



AS19

Created by FHU for the purpose of displaying Noise receivers. 01\08\07



Legend

- Noise Receivers
- Highways
- Mapbook Grid
- Railroad



AT12

Created by FHU for the purpose of displaying Noise receivers. 01/08/07



Legend

- Noise Receivers
- Mapbook Grid
- Highways
- Railroad



0 75 150 300 Feet



AU12

Created by FHU for the purpose of displaying Noise receivers. 01/08/07



Legend

- Noise Receivers
- Highways
- Mapbook Grid
- Railroad

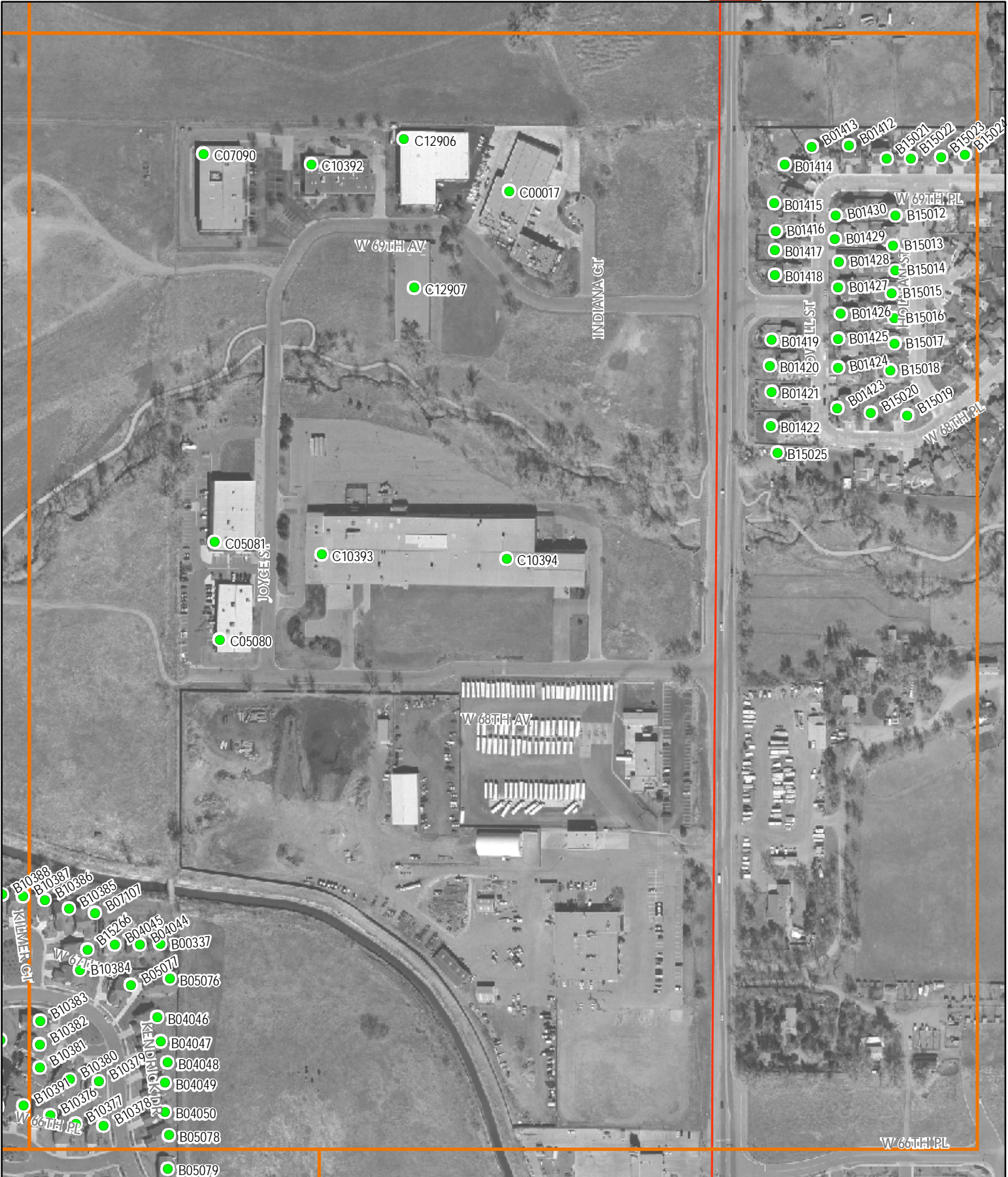


0 75 150 300 Feet



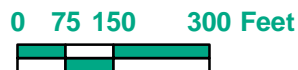
AU18

Created by FHU for the purpose of displaying Noise receivers. 01/08/07



Legend

- Noise Receivers
- Highways
- ▭ Mapbook Grid
- Railroad



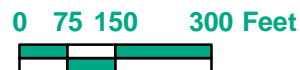
AU19

Created by FHU for the purpose of displaying Noise receivers. 01/08/07



Legend

- Noise Receivers
- Highways
- Mapbook Grid
- Railroad



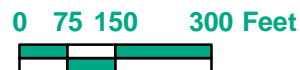
AV12

Created by FHU for the purpose of displaying Noise receivers. 01\08\07



Legend

- Noise Receivers
- Highways
- Mapbook Grid
- Railroad



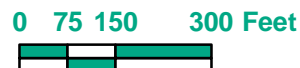
AV19

Created by FHU for the purpose of displaying Noise receivers. 01\08\07



Legend

- Noise Receivers
- Highways
- Mapbook Grid
- Railroad



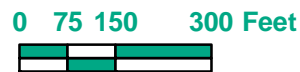
AW12

Created by FHU for the purpose of displaying Noise receivers. 01/08/07



Legend

- Noise Receivers
- Highways
- ▭ Mapbook Grid
- Railroad



AW18

Created by FHU for the purpose of displaying Noise receivers. 01\08\07



Legend

- Noise Receivers
- ▭ Mapbook Grid
- Highways
- Railroad



AX11

Created by FHU for the purpose of displaying Noise receivers. 01/08/07



Legend

- Noise Receivers
- Highways
- Mapbook Grid
- Railroad



0 75 150 300 Feet



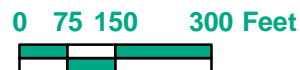
AX18

Created by FHU for the purpose of displaying Noise receivers. 01/08/07



Legend

- Noise Receivers
- Highways
- Mapbook Grid
- Railroad



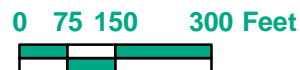
AY18

Created by FHU for the purpose of displaying Noise receivers. 01\08\07



Legend

- Noise Receivers
- Highways
- Mapbook Grid
- Railroad



AZ11

Created by FHU for the purpose of displaying Noise receivers. 01/08/07



Legend

- Noise Receivers
- Highways
- Mapbook Grid
- Railroad



0 75 150 300 Feet



AZ18

Created by FHU for the purpose of displaying Noise receivers. 01/08/07



Legend

- Noise Receivers
- Mapbook Grid
- Highways
- Railroad



BA10

Created by FHU for the purpose of displaying Noise receivers. 01/08/07



Legend

- Noise Receivers
- Highways
- Mapbook Grid
- Railroad

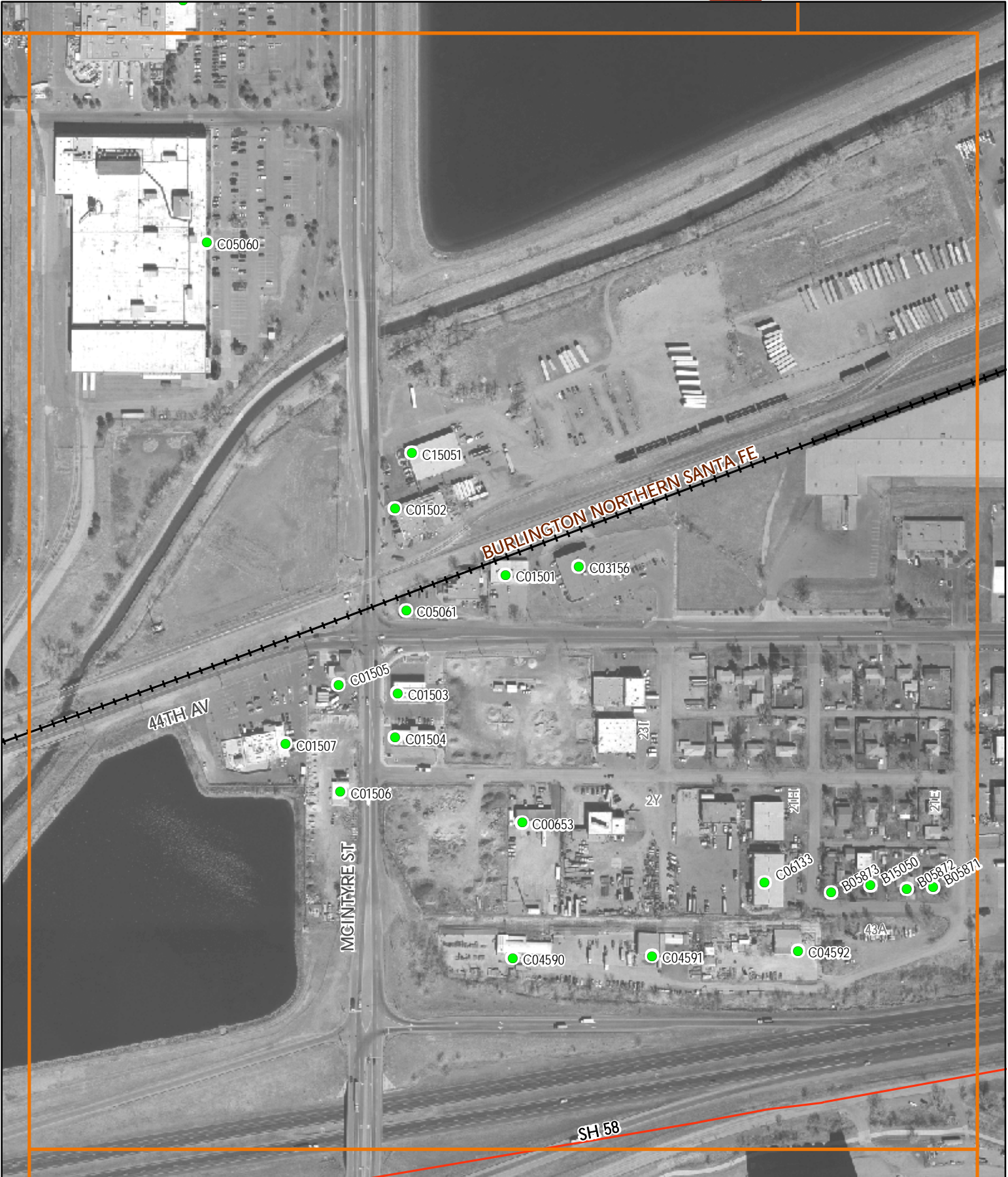


0 75 150 300 Feet



BA11

Created by FHU for the purpose of displaying Noise receivers. 01/08/07



Legend

- Noise Receivers
- Highways
- Mapbook Grid
- Railroad

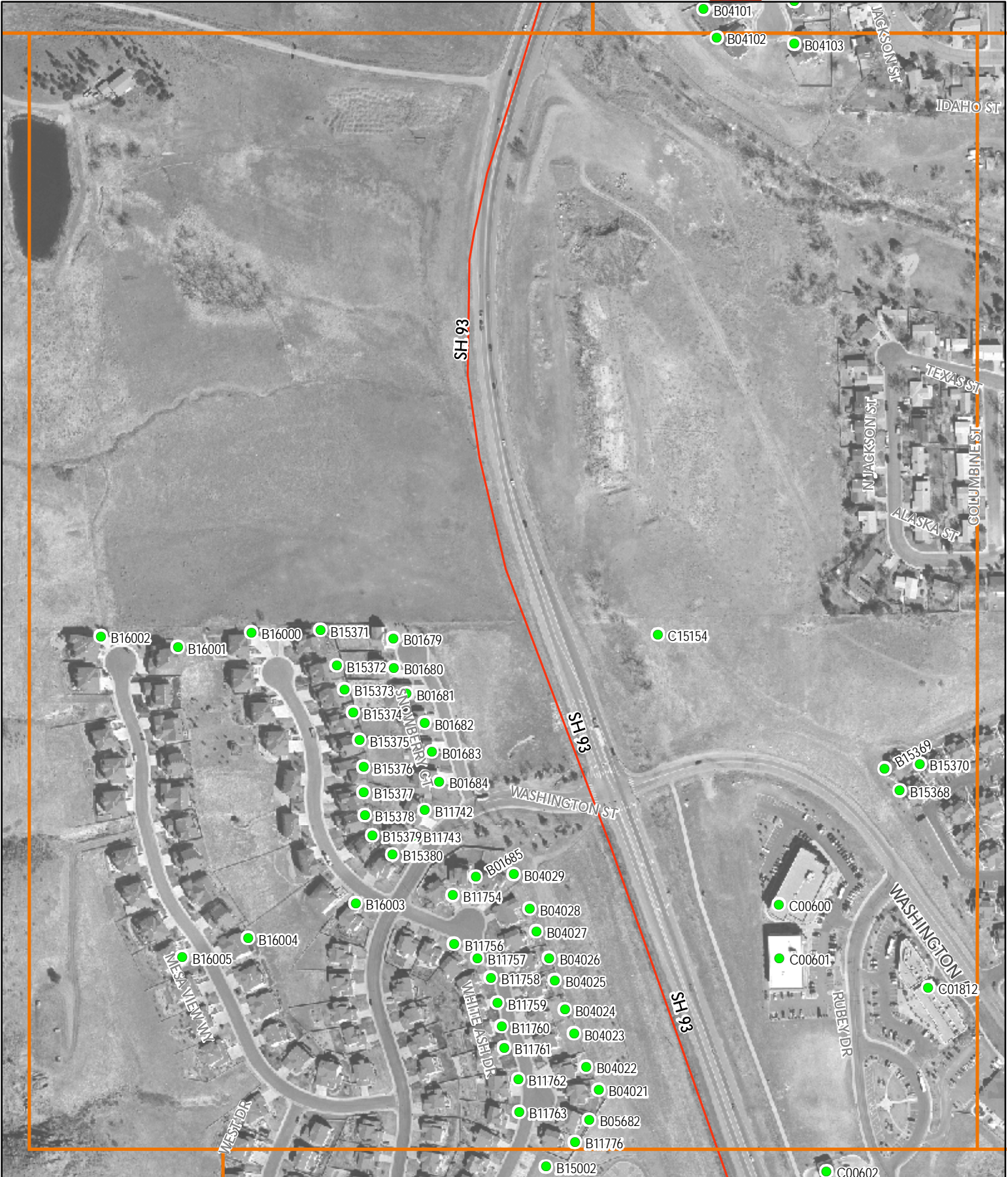


0 75 150 300 Feet



BA19

Created by FHU for the purpose of displaying Noise receivers. 01\08\07



Legend

- Noise Receivers
- Highways
- Mapbook Grid
- Railroad



0 75 150 300 Feet



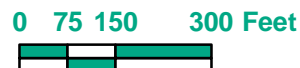
BB11

Created by FHU for the purpose of displaying Noise receivers. 01/08/07



Legend

- Noise Receivers
- Highways
- Mapbook Grid
- Railroad



BB19

Created by FHU for the purpose of displaying Noise receivers. 01\08\07



Legend

- Noise Receivers
- ~ Highways
- ▭ Mapbook Grid
- +— Railroad



0 75 150 300 Feet



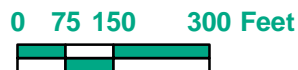
BC10

Created by FHU for the purpose of displaying Noise receivers. 01/08/07



Legend

- Noise Receivers
- Highways
- Mapbook Grid
- Railroad



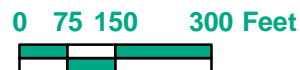
BD10

Created by FHU for the purpose of displaying Noise receivers. 01/08/07



Legend

- Noise Receivers
- Highways
- Mapbook Grid
- Railroad



BE12

Created by FHU for the purpose of displaying Noise receivers. 01/08/07



Legend

- Noise Receivers
- Mapbook Grid
- Highways
- Railroad

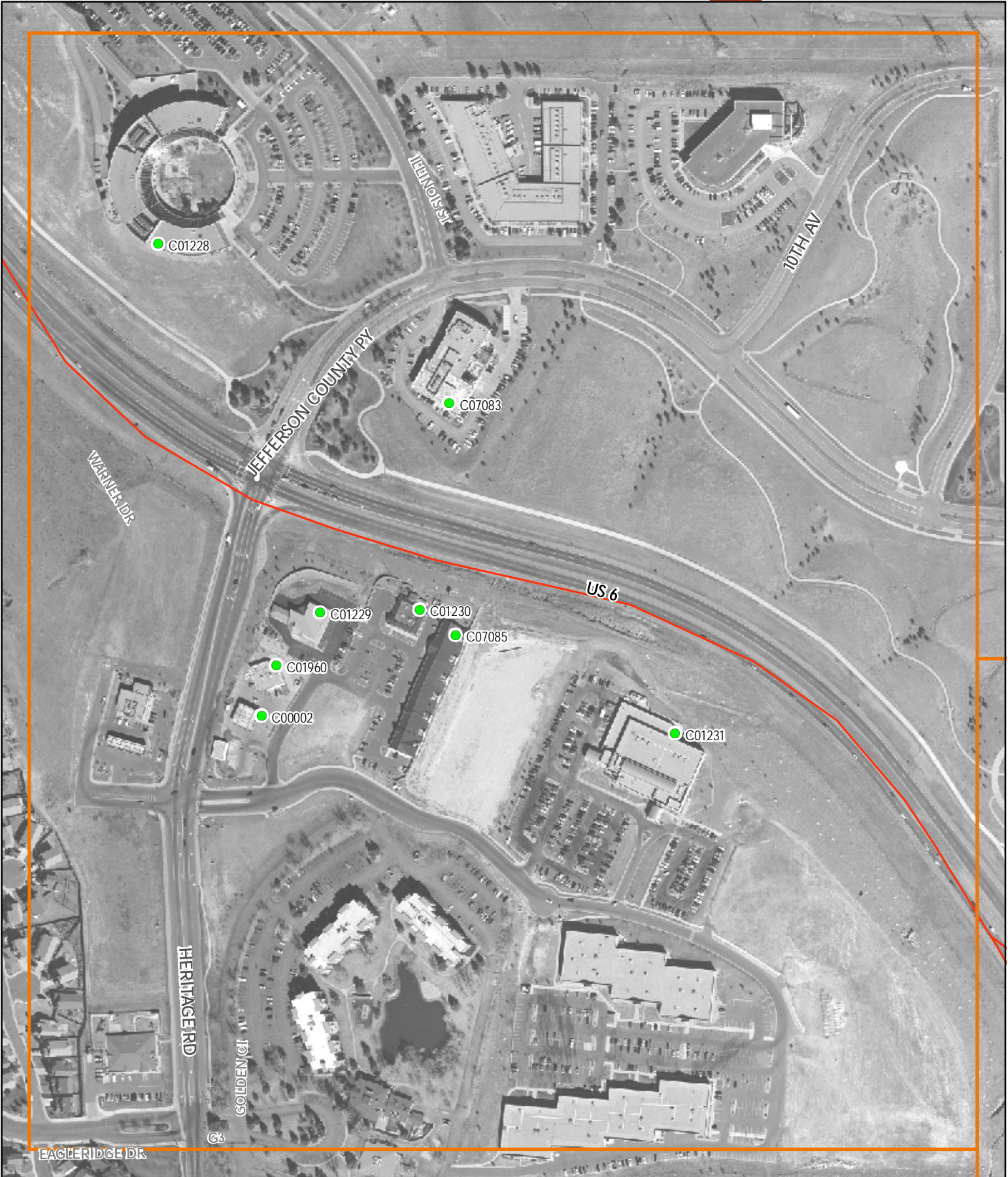


0 75 150 300 Feet



BF13

Created by FHU for the purpose of displaying Noise receivers. 01/08/07



Legend

- Noise Receivers
- Highways
- Mapbook Grid
- Railroad



BG14

Created by FHU for the purpose of displaying Noise receivers. 01/08/07



Legend

- Noise Receivers
- Highways
- Mapbook Grid
- +— Railroad



0 75 150 300 Feet



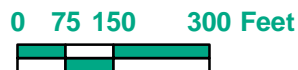
BH15

Created by FHU for the purpose of displaying Noise receivers. 01/08/07



Legend

- Noise Receivers
- Highways
- Mapbook Grid
- Railroad



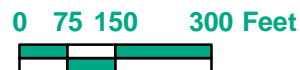
BH17

Created by FHU for the purpose of displaying Noise receivers. 01\08\07



Legend

- Noise Receivers
- Highways
- Mapbook Grid
- Railroad



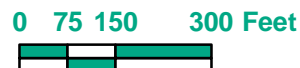
BI15

Created by FHU for the purpose of displaying Noise receivers. 01/08/07



Legend

- Noise Receivers
- Highways
- Mapbook Grid
- Railroad



BJ16

Created by FHU for the purpose of displaying Noise receivers. 01\08\07

Noise model results (dBA), without mitigation

Receiver	NAC	AM						PM					
		Existing	No Action	Freeway	Tollway	Regional Arterial	Combined	Existing	No Action	Freeway	Tollway	Regional Arterial	Combined
B00012	66	53	55	60	59	60	60	54	56	60	59	60	60
B00013	66	58	60	60	61	60	59	59	61	60	61	60	60
B00014	66	61	63	64	64	64	63	62	64	64	65	64	63
B00015	66	59	61	60	61	60	61	60	62	60	61	60	60
B00032	66	51	53	52	54	52	55	51	54	54	54	54	56
B00037	66	48	50	50	52	50	53	49	51	52	52	52	54
B00038	66	50	53	53	54	53	56	51	54	54	55	54	56
B00039	66	50	53	54	55	54	56	51	54	54	55	54	56
B00068	66	55	57	55	55	61	60	55	57	55	55	60	59
B00296	66	51	53	53	54	53	57	52	54	54	55	54	57
B00297	66	51	53	53	54	53	56	52	54	54	55	54	56
B00337	66	51	52	51	52	51	52	51	53	52	52	52	52
B00604	66	58	59	70	62	66	65	59	60	70	62	66	66
B00605	66	58	59	71	61	67	66	59	60	71	61	67	67
B00606	66	57	58	70	60	66	66	58	59	70	60	66	66
B00607	66	57	58	70	59	66	66	58	59	70	60	66	66
B00608	66	59	60	70	60	66	66	60	61	70	60	66	66
B00609	66	60	61	71	61	67	66	60	61	71	61	66	66
B00610	66	53	55	69	58	64	64	54	55	69	58	64	64
B00611	66	55	56	69	58	65	65	55	56	69	58	65	65
B00612	66	58	59	71	59	67	67	58	59	71	59	67	67
B00613	66	55	56	68	58	64	64	55	56	68	58	64	64
B00614	66	57	58	70	59	66	65	57	58	70	59	66	66
B00615	66	59	60	71	61	67	67	60	61	71	61	68	67
B00616	66	55	56	68	58	64	64	56	57	68	58	64	64
B00617	66	57	58	69	59	65	65	58	59	69	59	65	65
B00618	66	59	60	70	60	67	66	60	61	70	60	67	67
B00619	66	60	61	70	61	67	66	61	62	70	61	67	66
B00620	66	57	58	68	59	64	64	58	59	68	59	64	64
B00621	66	56	57	67	59	64	63	57	58	67	59	64	64
B00622	66	60	61	70	61	66	66	60	61	70	61	66	66
B00623	66	60	61	70	61	66	65	60	61	70	61	66	66
B00626	66	60	61	69	60	65	64	60	61	69	61	65	64
B00627	66	59	61	68	60	64	64	60	61	68	61	64	64
B00628	66	59	61	68	61	64	64	60	61	68	61	64	64
B00629	66	59	61	68	61	64	64	60	61	68	62	64	64
B00630	66	59	60	68	61	63	63	59	61	68	61	64	63
B00631	66	54	55	64	58	60	60	55	56	64	58	60	60
B00632	66	54	55	64	58	60	60	55	56	64	58	60	60
B00633	66	57	58	66	60	61	61	58	59	66	60	62	62
B00634	66	59	60	69	62	64	64	60	61	69	62	64	64
B00635	66	59	60	69	62	63	63	60	61	69	62	63	63
B00636	66	59	60	70	62	63	63	60	61	70	62	63	63
B00637	66	58	59	68	61	62	62	58	60	68	62	62	62
B00638	66	56	58	66	60	61	61	57	58	66	60	61	61
B00639	66	58	59	69	62	63	63	59	60	69	62	63	63
B00640	66	56	57	67	60	62	62	57	58	67	61	62	62
B00641	66	52	53	61	59	58	59	52	54	61	59	58	59
B00642	66	51	53	61	58	57	58	52	54	61	59	57	58

Noise model results (dBA), without mitigation

Receiver	NAC	AM						PM					
		Existing	No Action	Freeway	Tollway	Regional Arterial	Combined	Existing	No Action	Freeway	Tollway	Regional Arterial	Combined
B00643	66	52	53	61	58	57	58	52	54	61	58	57	58
B00644	66	52	53	61	58	57	58	52	54	61	58	57	58
B00645	66	53	55	64	59	58	59	54	55	63	59	58	59
B00675	66	53	55	61	59	65	58	53	54	61	58	64	58
B00888	66	64	66	67	68	68	66	64	67	68	69	68	66
B00889	66	57	58	58	58	57	64	58	58	58	58	58	64
B00958	66	58	63	65	65	66	65	58	62	65	65	66	65
B00959	66	57	62	64	64	62	64	58	61	64	64	62	64
B00961	66	64	66	64	65	61	67	64	65	64	64	61	68
B00962	66	60	62	61	61	66	62	60	61	60	60	66	63
B00963	66	63	65	64	64	64	65	64	64	63	64	64	66
B00964	66	64	65	N/A	69	N/A	70	65	66	N/A	69	N/A	70
B00966	66	62	63	69	63	64	63	63	64	69	64	63	63
B00968	66	63	65	74	65	67	67	64	65	74	66	67	67
B00969	66	58	59	70	62	62	62	59	60	70	63	62	62
B00970	66	59	61	64	65	62	62	60	61	64	65	62	63
B00971	66	56	58	71	67	66	66	57	59	71	67	66	66
B01196	66	55	56	66	60	60	60	56	57	66	60	60	60
B01197	66	53	55	60	59	57	59	54	56	60	59	57	59
B01198	66	53	55	61	59	58	59	54	56	61	60	58	59
B01199	66	53	55	61	60	58	60	54	56	61	60	58	60
B01200	66	54	56	63	60	60	61	54	56	63	61	60	62
B01201	66	53	55	62	57	56	57	54	56	62	57	56	57
B01202	66	54	56	65	58	56	57	55	56	64	58	56	57
B01203	66	53	55	62	58	56	57	54	56	62	58	56	57
B01204	66	54	56	64	58	56	57	55	56	64	58	57	57
B01205	66	56	57	66	58	57	57	57	57	66	59	57	57
B01206	66	53	55	62	57	56	57	54	55	62	57	56	57
B01207	66	54	56	63	57	56	57	55	56	63	58	56	57
B01208	66	56	57	66	58	58	58	57	58	66	58	58	58
B01209	66	57	59	67	58	64	63	58	59	67	58	64	64
B01210	66	54	56	67	63	64	65	55	57	67	63	64	65
B01211	66	55	57	66	63	63	66	56	57	66	63	63	66
B01212	66	53	55	63	61	60	62	54	56	63	61	60	62
B01213	66	53	56	61	60	58	60	54	56	60	60	58	60
B01214	66	63	66	68	68	67	68	64	67	68	68	67	68
B01215	66	61	64	69	67	66	67	62	65	69	67	66	67
B01216	66	55	57	67	60	61	61	56	57	67	60	61	61
B01217	66	57	58	69	62	64	64	58	59	69	62	64	64
B01218	66	55	57	66	61	62	62	56	58	65	62	62	62
B01219	66	59	61	68	65	65	64	59	61	68	66	65	64
B01220	66	52	53	57	60	53	57	53	54	57	60	53	58
B01221	66	52	54	58	58	53	56	53	55	58	58	53	56
B01222	66	53	54	58	56	54	56	54	55	58	57	54	56
B01223	66	64	66	68	67	68	68	65	67	68	67	68	68
B01224	66	65	67	67	67	68	68	66	67	67	68	68	68
B01225	66	63	65	64	62	63	64	64	65	64	62	63	64
B01226	66	59	61	65	62	62	64	60	61	65	62	62	63
B01227	66	63	64	68	66	66	66	64	65	68	65	66	66

Noise model results (dBA), without mitigation

Receiver	NAC	AM						PM					
		Existing	No Action	Freeway	Tollway	Regional Arterial	Combined	Existing	No Action	Freeway	Tollway	Regional Arterial	Combined
B01232	66	64	64	68	66	65	66	65	65	68	66	65	66
B01233	66	66	67	70	68	68	69	67	67	70	68	67	68
B01234	66	68	68	72	70	69	70	68	68	72	70	69	69
B01235	66	65	66	71	70	69	69	66	66	71	70	68	69
B01236	66	68	68	72	70	69	70	68	68	72	70	69	69
B01237	66	65	66	70	67	67	68	66	66	70	68	67	67
B01238	66	64	65	69	68	67	67	64	64	69	68	66	67
B01239	66	64	65	70	68	67	68	65	65	70	69	67	68
B01240	66	62	63	67	66	64	65	63	63	67	66	64	65
B01241	66	63	64	67	66	65	66	63	64	67	66	64	65
B01242	66	63	64	68	66	65	66	64	64	68	66	65	65
B01243	66	64	64	68	67	65	66	64	64	68	66	65	65
B01244	66	64	65	67	66	65	66	64	64	67	66	65	65
B01245	66	63	64	67	66	65	66	64	64	67	66	64	65
B01246	66	62	63	66	65	64	64	63	63	66	65	64	64
B01247	66	64	65	68	67	65	66	64	65	68	67	65	65
B01248	66	64	65	68	67	66	66	65	65	68	67	65	66
B01249	66	59	60	63	63	61	62	59	60	63	62	61	61
B01250	66	61	62	65	65	63	64	61	62	66	65	64	63
B01251	66	61	62	65	65	63	64	61	62	65	65	63	63
B01252	66	62	63	65	64	63	63	63	63	65	64	63	63
B01253	66	62	63	65	64	63	63	63	63	65	64	63	63
B01254	66	61	63	64	64	63	63	62	63	64	64	62	62
B01255	66	61	63	64	64	63	63	62	62	64	64	62	63
B01256	66	61	62	64	63	62	62	61	62	64	63	62	62
B01257	66	60	62	63	63	62	62	61	62	63	63	62	62
B01258	66	60	61	63	63	62	62	60	61	63	63	61	62
B01259	66	57	59	61	60	59	59	58	59	61	60	59	59
B01260	66	55	57	59	58	57	58	55	57	59	58	57	57
B01261	66	54	57	58	58	57	57	55	57	58	58	56	56
B01262	66	54	56	57	57	56	56	54	56	57	57	56	55
B01263	66	54	56	57	57	56	56	54	56	57	57	56	55
B01264	66	54	57	58	58	57	57	55	57	58	58	56	56
B01265	66	59	61	62	62	61	61	59	61	62	62	61	61
B01266	66	59	61	62	62	61	61	59	60	62	62	61	61
B01267	66	58	60	62	62	61	61	59	60	62	62	60	60
B01268	66	59	60	62	62	61	61	59	60	62	62	60	61
B01269	66	58	60	63	62	61	61	59	60	63	62	61	61
B01270	66	59	61	63	63	61	62	59	60	63	63	61	61
B01272	66	58	59	61	60	59	60	58	59	61	60	59	59
B01273	66	59	60	62	62	61	61	59	60	62	62	60	61
B01274	66	59	60	62	62	60	61	59	60	62	61	60	60
B01275	66	59	60	62	62	61	61	59	60	62	61	60	60
B01356	66	59	61	64	64	62	62	59	61	64	63	61	62
B01357	66	54	57	58	58	57	57	54	57	58	58	56	56
B01358	66	55	58	58	58	57	57	55	58	58	58	57	56
B01359	66	55	58	58	58	57	57	55	58	58	58	57	56
B01360	66	55	58	59	58	58	58	56	59	59	58	57	57
B01361	66	56	60	60	60	59	59	57	60	60	59	58	58

Noise model results (dBA), without mitigation

Receiver	NAC	AM						PM					
		Existing	No Action	Freeway	Tollway	Regional Arterial	Combined	Existing	No Action	Freeway	Tollway	Regional Arterial	Combined
B01372	66	54	55	66	65	58	60	55	56	66	64	58	60
B01373	66	59	59	68	67	63	64	60	59	68	66	64	64
B01374	66	61	60	69	68	66	66	62	61	69	67	66	66
B01375	66	50	49	62	61	54	54	51	50	62	60	55	54
B01376	66	48	48	60	59	52	53	49	49	61	59	52	53
B01377	66	54	54	65	63	59	59	56	54	65	63	60	60
B01379	66	62	63	68	67	67	68	64	64	68	67	67	68
B01381	66	59	61	61	62	66	66	60	61	60	62	65	66
B01382	66	53	54	53	53	60	59	53	54	53	53	60	59
B01383	66	57	59	57	58	65	62	57	59	57	58	64	62
B01384	66	60	61	60	61	61	65	60	61	60	60	62	65
B01385	66	60	61	60	60	60	62	60	61	59	60	61	62
B01386	66	63	64	63	64	62	N/A	63	64	63	63	63	N/A
B01389	66	66	66	66	67	64	63	66	67	66	66	66	63
B01390	66	65	66	65	65	63	63	66	66	65	65	65	63
B01391	66	65	66	66	66	64	62	66	66	66	66	66	62
B01392	66	58	59	58	59	58	N/A	58	59	58	58	59	N/A
B01393	66	61	61	61	61	60	60	60	61	61	61	61	59
B01394	66	63	64	63	64	62	65	63	64	63	64	64	65
B01395	66	60	60	60	60	59	64	60	61	60	60	60	64
B01396	66	55	56	56	56	55	63	56	56	56	56	56	63
B01397	66	59	60	59	60	58	N/A	59	60	59	59	59	N/A
B01398	66	57	58	57	58	56	65	57	58	57	57	58	65
B01399	66	57	58	57	58	56	64	57	58	57	57	58	64
B01400	66	64	65	65	65	63	66	64	65	65	65	65	66
B01401	66	65	66	66	66	65	66	66	66	66	66	66	66
B01402	66	65	66	66	66	65	81	65	66	66	66	65	81
B01403	66	64	65	64	65	64	73	64	65	64	64	64	74
B01406	66	58	59	57	56	56	59	59	60	56	56	56	59
B01407	66	61	62	63	62	61	65	61	62	61	62	61	65
B01408	66	58	59	54	53	53	57	59	60	53	54	53	57
B01409	66	62	62	62	62	61	68	62	63	62	62	62	69
B01410	66	61	62	62	62	61	68	62	63	62	62	62	69
B01411	66	58	58	58	58	58	62	58	59	58	59	58	62
B01412	66	56	57	56	57	56	59	57	57	57	57	57	59
B01413	66	59	59	59	59	59	61	59	60	59	60	59	62
B01414	66	62	62	62	62	61	64	62	63	62	62	62	64
B01415	66	63	63	63	63	63	65	63	64	64	64	63	66
B01416	66	63	63	63	63	63	65	63	64	63	64	63	66
B01417	66	63	63	63	63	63	65	63	64	63	64	63	66
B01418	66	63	63	63	63	63	65	63	64	63	64	63	66
B01419	66	63	64	63	64	63	66	64	64	64	64	64	66
B01420	66	64	64	64	64	63	66	64	65	64	64	64	66
B01421	66	63	64	63	64	63	66	64	64	64	64	64	66
B01422	66	63	64	63	64	63	66	64	64	64	64	64	66
B01423	66	57	57	57	57	57	60	57	58	57	58	57	60
B01424	66	57	57	57	57	57	60	57	58	57	58	57	60
B01425	66	57	57	57	57	57	60	57	58	57	58	57	60
B01426	66	57	57	57	57	57	60	57	58	57	58	57	60

Noise model results (dBA), without mitigation

Receiver	NAC	AM						PM					
		Existing	No Action	Freeway	Tollway	Regional Arterial	Combined	Existing	No Action	Freeway	Tollway	Regional Arterial	Combined
B01427	66	57	57	57	57	57	60	57	58	57	58	57	60
B01428	66	57	57	57	57	57	60	57	58	57	58	57	60
B01429	66	57	58	57	58	57	60	58	58	58	58	58	60
B01430	66	57	58	57	58	57	60	58	58	58	58	58	60
B01461	66	56	58	58	58	58	60	57	59	59	60	59	60
B01462	66	59	61	61	61	61	64	60	62	62	62	62	64
B01463	66	54	56	56	57	56	59	55	57	57	58	57	59
B01464	66	60	62	62	63	62	66	61	63	63	64	63	66
B01465	66	58	60	61	62	61	63	59	61	62	63	62	63
B01468	66	54	56	56	58	56	61	55	57	58	58	57	61
B01469	66	61	63	63	64	63	65	62	64	64	65	64	66
B01470	66	58	60	61	62	60	67	59	61	62	63	62	67
B01472	66	64	66	66	67	66	81	65	67	67	68	67	80
B01473	66	59	62	62	63	62	62	60	63	63	64	63	63
B01475	66	59	61	61	63	61	67	60	62	62	63	62	67
B01476	66	60	62	62	64	62	69	61	63	64	64	63	69
B01477	66	63	65	65	67	65	65	64	66	67	67	66	66
B01478	66	61	63	63	64	63	70	61	64	64	65	64	70
B01480	66	64	66	68	68	68	65	65	67	68	69	68	66
B01483	66	59	62	62	63	62	62	60	63	63	64	63	62
B01484	66	55	57	58	59	58	58	56	58	59	59	59	59
B01485	66	58	60	61	62	62	61	59	61	62	63	62	61
B01486	66	58	60	62	62	62	61	59	61	62	63	62	62
B01487	66	55	57	58	59	58	59	56	58	59	60	59	59
B01488	66	54	57	58	59	58	58	55	58	58	59	58	59
B01489	66	56	59	60	61	60	63	57	60	60	61	60	63
B01490	66	58	61	62	63	62	61	59	61	62	63	62	61
B01492	66	53	55	57	58	57	59	54	56	57	58	57	59
B01493	66	57	59	61	62	61	65	58	60	61	62	61	65
B01494	66	60	63	64	65	64	N/A	61	64	64	66	65	N/A
B01495	66	61	63	65	66	65	N/A	62	64	65	66	65	N/A
B01496	66	65	67	68	69	69	N/A	65	68	69	70	69	N/A
B01497	66	59	61	63	64	63	63	60	62	63	64	63	64
B01500	66	61	63	65	66	65	N/A	62	64	65	66	65	N/A
B01652	66	71	73	62	72	50	50	72	74	62	73	50	50
B01653	66	69	71	63	70	52	52	70	72	63	71	52	52
B01654	66	63	64	61	64	54	54	64	65	61	65	55	54
B01655	66	60	62	62	62	55	55	61	62	62	63	55	55
B01656	66	59	61	63	62	56	55	60	61	62	62	56	55
B01657	66	62	64	62	64	54	54	63	64	62	64	54	54
B01658	66	60	61	62	62	55	54	61	62	62	63	55	54
B01659	66	60	61	62	62	54	54	61	62	62	63	54	54
B01660	66	59	61	61	62	53	53	60	61	61	62	53	53
B01661	66	59	60	61	62	51	51	59	61	61	62	51	51
B01662	66	58	60	61	61	50	50	59	61	61	62	50	50
B01663	66	62	63	59	64	46	46	63	64	59	64	47	46
B01664	66	59	61	58	62	45	45	60	61	58	62	45	45
B01665	66	57	59	56	59	44	44	58	59	55	60	44	44
B01666	66	61	63	62	64	50	50	62	63	62	64	50	50

Noise model results (dBA), without mitigation

Receiver	NAC	AM						PM					
		Existing	No Action	Freeway	Tollway	Regional Arterial	Combined	Existing	No Action	Freeway	Tollway	Regional Arterial	Combined
B01667	66	59	61	61	62	49	49	60	61	61	63	49	49
B01668	66	56	58	59	60	47	46	57	58	59	61	47	46
B01669	66	57	59	62	61	49	49	58	60	62	62	49	49
B01670	66	58	60	62	62	49	49	59	61	62	62	49	49
B01671	66	60	62	63	63	52	52	61	62	63	64	52	52
B01672	66	58	59	62	61	52	52	59	60	62	62	52	52
B01673	66	56	58	62	60	52	52	57	58	62	61	52	52
B01674	66	56	58	62	60	54	54	57	58	62	61	54	54
B01675	66	55	56	62	60	56	56	56	57	62	60	56	56
B01676	66	55	55	64	60	59	59	55	56	64	60	59	59
B01677	66	55	55	64	60	59	59	56	56	64	61	59	59
B01678	66	57	57	63	60	57	57	57	58	63	60	57	57
B01679	66	58	58	69	68	63	63	59	58	69	68	63	63
B01680	66	56	56	68	67	62	62	57	56	68	67	62	62
B01681	66	56	56	69	67	62	62	57	57	69	67	63	62
B01682	66	56	57	69	67	63	63	57	57	69	67	63	63
B01683	66	56	56	69	66	62	62	57	57	69	66	62	62
B01684	66	56	57	69	65	61	61	57	57	69	66	61	62
B01685	66	60	60	70	66	64	64	60	60	70	66	64	64
B01686	66	62	64	60	65	61	60	63	65	61	65	62	61
B01687	66	61	63	62	64	63	62	62	64	62	65	63	63
B01688	66	59	61	62	62	61	61	59	60	62	62	61	61
B01689	66	59	60	62	62	61	61	59	60	62	62	60	60
B01690	66	58	60	62	62	61	61	59	60	62	62	60	60
B01719	66	52	55	60	58	56	57	53	55	60	58	56	57
B01728	66	52	55	61	57	56	57	53	55	61	57	56	57
B01729	66	52	54	60	57	56	57	53	55	60	57	56	57
B01730	66	52	54	59	57	56	57	53	55	59	57	56	57
B01735	66	60	63	65	64	62	65	61	63	64	64	63	64
B01736	66	58	61	64	63	62	63	59	62	63	64	62	63
B01737	66	61	64	64	65	62	65	62	65	64	66	62	65
B01738	66	59	62	64	64	62	64	60	63	63	64	62	64
B01741	66	55	58	61	61	59	61	56	58	61	61	59	61
B01742	66	54	56	60	60	58	60	55	57	60	60	58	60
B01743	66	53	56	60	59	58	59	54	56	60	60	58	59
B01744	66	54	56	60	60	58	60	54	56	60	60	58	60
B01745	66	54	56	60	60	58	60	54	56	60	60	58	60
B01746	66	53	55	61	57	56	57	54	56	61	58	56	57
B01747	66	53	55	60	58	56	57	54	56	60	58	56	57
B01748	66	53	56	60	58	57	58	54	56	60	58	57	58
B01765	66	53	55	61	57	56	57	54	55	60	57	56	57
B01766	66	55	56	67	58	63	63	56	57	67	58	63	63
B01767	66	54	55	67	57	63	63	55	56	67	58	63	63
B01768	66	52	54	66	57	62	62	53	54	66	57	62	62
B01769	66	51	53	66	57	62	62	52	53	66	57	62	62
B01770	66	50	52	66	56	62	61	51	52	66	56	62	61
B01771	66	52	53	67	57	62	62	52	53	67	57	62	62
B01772	66	53	55	68	58	64	63	54	55	68	58	64	64
B01773	66	50	51	65	53	62	61	51	52	65	53	62	61

Noise model results (dBA), without mitigation

Receiver	NAC	AM						PM					
		Existing	No Action	Freeway	Tollway	Regional Arterial	Combined	Existing	No Action	Freeway	Tollway	Regional Arterial	Combined
B01774	66	49	50	64	55	60	60	50	51	64	56	60	60
B01775	66	47	48	61	52	57	56	47	49	60	52	57	57
B01777	66	55	56	68	60	63	63	56	57	68	60	63	63
B01778	66	52	53	67	58	62	62	53	54	67	58	62	62
B01779	66	52	54	63	57	59	59	53	54	63	57	59	59
B01781	66	48	49	62	54	58	57	49	50	62	54	58	58
B01782	66	49	51	63	55	58	58	50	51	63	55	58	59
B01783	66	49	50	63	54	59	58	50	51	63	54	59	59
B01784	66	49	51	63	55	59	59	50	51	63	55	59	59
B01785	66	49	51	64	54	59	59	50	51	64	55	59	59
B01786	66	49	51	64	55	60	59	50	51	64	55	60	60
B01787	66	50	51	64	55	60	60	50	52	64	55	60	60
B01788	66	50	52	65	56	61	61	51	52	65	56	61	61
B01789	66	51	52	66	56	62	61	52	53	66	56	62	62
B01806	66	57	59	60	61	48	48	58	60	60	62	49	48
B01807	66	56	58	59	60	47	46	57	58	59	61	47	46
B01808	66	56	58	58	60	45	45	57	58	58	60	46	45
B01809	66	56	57	59	60	45	45	57	58	58	60	45	45
B01810	66	55	57	59	59	44	44	56	57	58	60	44	44
B01811	66	55	57	59	59	44	43	56	57	59	60	44	44
B01823	66	58	60	62	62	60	60	58	60	62	61	60	60
B01824	66	57	60	62	61	60	60	58	60	62	61	60	60
B01825	66	56	59	61	61	59	60	56	58	61	60	59	59
B01826	66	56	58	60	60	59	59	56	58	60	60	59	58
B01827	66	56	58	60	60	59	59	56	58	60	60	58	58
B01828	66	56	58	60	60	59	59	56	58	60	60	58	58
B01829	66	55	58	60	60	58	59	56	58	60	60	58	58
B01830	66	56	59	60	60	58	59	56	59	60	60	58	58
B01831	66	56	59	60	60	59	59	56	59	60	60	58	58
B01832	66	59	61	63	63	61	62	59	61	63	62	61	61
B01833	66	57	58	60	59	58	59	57	58	60	59	58	58
B01834	66	59	60	62	62	60	61	59	60	62	61	60	60
B01835	66	58	60	62	62	60	61	58	59	62	61	60	60
B01958	66	53	54	57	57	53	55	54	55	57	57	53	56
B01963	66	65	67	61	66	48	48	66	68	61	67	48	48
B01964	66	64	66	63	65	51	51	65	66	63	66	51	51
B01965	66	66	68	61	67	54	54	67	68	60	68	54	54
B01966	66	65	66	60	65	53	53	66	67	60	66	53	53
B02979	66	54	57	64	61	60	61	55	57	64	61	60	61
B02980	66	54	56	63	60	60	60	55	57	63	61	60	60
B02981	66	51	54	60	57	56	57	52	54	60	57	56	57
B02982	66	52	54	60	58	57	58	53	55	60	58	57	58
B02983	66	50	53	58	56	55	56	51	53	58	57	55	56
B02984	66	53	56	63	60	59	60	54	56	62	60	60	60
B02985	66	53	56	63	60	60	60	54	56	63	60	60	60
B02986	66	51	54	60	58	57	58	52	54	60	58	57	58
B02987	66	49	51	57	56	54	55	50	52	57	56	55	55
B02988	66	51	54	60	57	57	57	52	54	60	58	57	58
B02989	66	65	67	74	75	71	72	66	68	74	75	72	72

Noise model results (dBA), without mitigation

Receiver	NAC	AM						PM					
		Existing	No Action	Freeway	Tollway	Regional Arterial	Combined	Existing	No Action	Freeway	Tollway	Regional Arterial	Combined
B02992	66	61	63	68	66	67	67	62	63	68	67	67	68
B02993	66	60	62	68	66	66	67	61	63	68	66	67	67
B02994	66	60	62	68	66	66	66	61	63	68	66	66	67
B02995	66	59	61	67	65	65	66	60	62	67	66	66	66
B02996	66	59	61	67	65	65	66	60	62	67	66	66	66
B02997	66	58	58	60	60	60	60	59	60	60	61	60	59
B03001	66	64	66	68	64	66	67	65	66	68	64	66	67
B03902	66	63	63	67	65	64	65	63	63	67	65	64	64
B03903	66	62	62	65	64	63	64	62	62	65	64	62	63
B03904	66	58	59	62	61	60	61	59	59	62	61	60	60
B03905	66	59	60	62	61	60	61	59	60	62	61	60	60
B03906	66	59	59	62	61	60	61	59	59	62	61	60	60
B03907	66	59	60	62	62	61	61	59	60	62	62	60	61
B03908	66	59	60	62	62	60	61	59	60	62	61	60	60
B03909	66	58	60	62	62	60	61	59	59	62	61	60	60
B03910	66	59	60	62	62	61	61	59	60	62	62	60	61
B03911	66	59	60	62	62	61	61	59	60	62	62	60	61
B03912	66	59	60	63	62	61	61	59	60	62	62	60	61
B03913	66	58	60	62	62	61	61	58	60	62	62	60	61
B03914	66	58	60	62	62	60	61	58	59	62	61	60	60
B03915	66	59	61	63	63	61	62	59	61	63	63	61	61
B03916	66	59	61	63	63	61	62	59	61	63	62	61	61
B03917	66	64	65	68	67	68	68	64	66	68	67	68	68
B03918	66	61	64	68	67	67	68	62	65	68	67	68	68
B03919	66	54	56	57	58	58	58	55	57	57	58	58	58
B03921	66	56	58	71	62	62	61	57	58	71	62	61	61
B04009	66	56	57	54	59	56	56	56	58	54	59	56	56
B04010	66	53	55	53	56	54	54	54	56	53	56	54	54
B04011	66	58	59	55	61	56	57	58	60	54	62	56	58
B04012	66	54	56	53	58	54	54	55	57	53	58	54	54
B04013	66	55	57	53	58	54	54	56	57	53	58	54	54
B04014	66	55	56	53	57	54	54	56	57	53	57	54	54
B04015	66	55	57	54	57	54	54	56	57	54	57	54	54
B04016	66	57	59	55	58	55	55	58	59	55	59	55	55
B04017	66	58	60	56	60	56	56	59	61	56	60	56	56
B04018	66	59	61	56	61	56	56	60	61	56	61	56	57
B04019	66	60	62	57	62	57	57	61	62	57	62	57	58
B04021	66	58	59	71	66	66	66	59	60	71	66	66	66
B04022	66	56	56	71	64	65	64	56	57	71	64	65	65
B04023	66	54	55	70	62	62	62	55	55	70	62	62	62
B04024	66	54	54	69	62	62	61	55	55	69	62	62	61
B04025	66	55	55	69	62	61	61	56	56	69	62	61	61
B04026	66	56	56	69	63	62	61	57	57	69	63	62	62
B04027	66	58	59	70	65	64	64	59	59	70	65	64	64
B04028	66	59	59	71	66	65	65	60	60	71	66	65	65
B04029	66	60	61	71	67	65	65	61	61	71	67	65	65
B04030	66	60	63	64	65	64	63	61	64	65	66	65	63
B04032	66	63	66	66	67	66	N/A	64	66	67	68	67	N/A
B04034	66	59	60	49	49	48	52	60	61	49	49	49	53

Noise model results (dBA), without mitigation

Receiver	NAC	AM						PM					
		Existing	No Action	Freeway	Tollway	Regional Arterial	Combined	Existing	No Action	Freeway	Tollway	Regional Arterial	Combined
B04035	66	59	60	50	50	50	54	60	61	50	50	50	54
B04036	66	60	61	50	50	49	53	61	62	50	50	50	54
B04037	66	58	60	54	54	54	57	59	60	54	54	54	58
B04038	66	53	54	53	53	52	56	53	54	53	53	52	56
B04039	66	52	53	51	51	51	55	52	53	51	51	51	55
B04040	66	55	56	49	49	48	52	55	57	49	49	49	52
B04041	66	52	53	49	49	49	53	53	54	49	50	49	53
B04042	66	52	53	50	50	50	53	52	53	50	51	50	53
B04043	66	49	50	50	50	49	52	50	51	50	51	50	52
B04044	66	51	52	51	52	51	52	51	53	52	52	52	52
B04045	66	51	52	51	52	51	52	51	53	52	52	52	52
B04046	66	51	52	51	52	51	52	51	53	52	53	52	53
B04047	66	51	52	51	52	51	52	51	53	52	53	52	53
B04048	66	51	52	51	52	51	53	51	53	52	53	52	53
B04049	66	51	52	51	52	51	53	51	53	52	53	52	54
B04050	66	51	52	52	52	51	53	51	53	52	53	52	54
B04051	66	51	52	52	53	52	54	51	53	53	53	52	55
B04052	66	55	56	57	58	57	62	55	58	58	59	58	62
B04093	66	55	56	59	59	44	44	56	57	58	60	44	44
B04094	66	54	56	58	59	44	44	55	57	58	59	44	44
B04095	66	54	56	60	59	45	44	55	56	60	60	45	44
B04096	66	54	56	60	60	45	45	55	56	60	60	46	45
B04097	66	54	56	61	60	47	47	55	56	61	61	47	47
B04098	66	54	56	53	58	43	42	55	56	53	58	43	43
B04099	66	52	54	50	55	42	41	53	54	50	56	42	41
B04100	66	50	52	49	54	41	41	51	53	49	54	41	41
B04101	66	57	57	65	62	59	59	58	57	65	62	59	59
B04102	66	57	56	65	61	59	58	58	57	65	61	59	58
B04103	66	54	53	63	60	57	57	55	54	63	60	57	57
B04104	66	53	53	63	60	57	57	54	53	63	60	57	57
B04105	66	54	56	62	60	56	56	55	56	62	60	56	56
B04106	66	54	55	63	60	58	57	55	56	63	60	58	57
B04107	66	52	53	62	59	57	56	53	54	62	60	57	57
B04108	66	51	52	62	59	56	56	52	52	62	59	56	56
B04607	66	72	72	71	71	71	71	72	72	71	71	71	71
B04608	66	71	71	71	71	71	71	71	71	71	71	71	71
B04609	66	71	71	71	71	71	71	71	71	71	71	71	71
B04610	66	71	71	70	70	70	70	71	71	70	70	70	70
B04611	66	71	71	70	70	70	70	71	71	70	70	70	70
B04612	66	71	71	70	70	70	70	71	71	70	70	70	70
B04613	66	70	70	70	70	70	70	70	70	70	70	70	70
B04649	66	72	72	72	72	72	72	72	72	72	72	72	72
B04650	66	72	72	72	72	72	72	72	72	72	72	72	72
B04796	66	58	60	60	60	62	60	58	59	60	60	62	60
B04798	66	66	67	67	67	65	62	66	67	66	67	67	62
B05062	66	51	53	54	55	54	56	51	54	55	56	55	56
B05064	66	49	52	52	53	52	55	50	53	53	54	53	55
B05065	66	51	53	53	54	53	57	52	54	54	55	54	57
B05066	66	50	53	53	54	52	56	51	54	54	54	54	56

Noise model results (dBA), without mitigation

Receiver	NAC	AM						PM					
		Existing	No Action	Freeway	Tollway	Regional Arterial	Combined	Existing	No Action	Freeway	Tollway	Regional Arterial	Combined
B05067	66	51	53	53	54	53	56	52	54	54	55	54	57
B05068	66	55	57	57	59	57	61	56	58	59	59	59	62
B05073	66	53	55	55	56	55	57	54	56	56	57	56	58
B05074	66	53	55	55	56	55	58	54	56	56	57	56	58
B05076	66	51	52	51	52	51	52	51	53	52	52	52	52
B05077	66	51	52	51	52	51	52	51	53	52	52	52	52
B05078	66	51	52	52	52	51	54	51	53	52	53	52	54
B05079	66	51	52	52	52	51	55	51	53	52	53	52	55
B05082	66	54	54	50	50	49	53	54	55	50	50	50	54
B05083	66	55	56	55	55	55	58	55	56	55	55	55	58
B05084	66	57	58	57	58	56	60	57	58	57	57	58	60
B05089	66	51	53	54	55	54	58	52	54	55	56	55	58
B05090	66	52	54	54	56	54	59	53	55	56	56	56	59
B05355	66	51	51	62	59	57	56	52	52	62	59	57	57
B05356	66	50	50	N/A	59	56	56	51	50	N/A	59	56	56
B05554	66	57	59	66	64	63	62	58	60	66	64	63	62
B05555	66	56	58	64	62	62	61	57	58	64	63	62	61
B05556	66	53	55	59	63	59	63	54	56	59	63	59	63
B05587	66	62	65	62	62	61	61	63	65	62	62	61	60
B05588	66	62	64	62	62	61	61	62	65	62	62	61	61
B05589	66	61	64	63	63	61	62	62	64	63	63	61	61
B05590	66	60	63	63	63	61	62	61	63	63	62	61	61
B05591	66	59	62	63	63	61	62	59	62	63	62	61	61
B05592	66	59	62	63	63	61	62	59	62	63	62	61	61
B05593	66	58	61	63	63	61	62	59	62	63	62	61	61
B05682	66	59	60	71	66	66	66	60	61	71	66	66	66
B05832	66	69	69	69	69	69	69	69	69	69	69	69	69
B05833	66	70	70	70	70	69	69	70	70	70	70	69	69
B05834	66	67	67	67	67	67	67	67	67	67	67	67	67
B05835	66	65	65	65	65	65	65	65	65	65	65	65	65
B05836	66	66	66	66	66	66	65	66	66	66	66	66	65
B05837	66	67	67	66	66	66	66	67	67	66	66	66	66
B05838	66	70	70	69	69	69	69	70	70	69	69	69	69
B05839	66	69	69	68	68	68	68	69	69	68	68	68	68
B05864	66	57	58	57	58	56	66	57	58	57	57	58	66
B05865	66	55	56	55	55	55	62	55	56	55	55	55	62
B05866	66	53	54	54	54	53	60	54	55	53	54	54	60
B05867	66	52	53	52	52	52	59	52	53	52	52	52	59
B05868	66	52	53	52	53	52	58	52	53	52	53	52	58
B05869	66	52	54	54	54	54	56	53	55	55	55	55	57
B05870	66	53	55	55	56	55	57	54	56	56	56	56	57
B05871	66	41	45	45	46	45	N/A	42	45	45	46	46	N/A
B05872	66	42	45	46	46	46	N/A	43	46	46	47	46	N/A
B05873	66	43	47	47	48	47	N/A	44	47	47	48	47	N/A
B06410	66	54	55	49	49	48	52	54	56	49	49	49	52
B06411	66	55	56	49	49	48	52	56	57	49	49	48	52
B07107	66	50	52	51	51	50	51	51	52	51	52	51	52
B07108	66	65	65	65	66	64	64	65	66	65	65	65	64
B07109	66	65	65	65	65	64	65	65	65	65	65	65	65

Noise model results (dBA), without mitigation

Receiver	NAC	AM						PM					
		Existing	No Action	Freeway	Tollway	Regional Arterial	Combined	Existing	No Action	Freeway	Tollway	Regional Arterial	Combined
B07110	66	64	65	64	65	63	65	64	65	64	64	64	65
B07111	66	62	63	62	63	62	64	62	63	63	63	62	64
B07112	66	59	60	60	60	59	65	59	60	60	60	59	65
B07113	66	59	60	60	60	58	66	59	60	60	60	60	66
B07768	66	53	56	61	60	58	59	54	56	60	60	58	60
B07769	66	53	55	60	59	57	59	54	56	60	59	57	59
B07770	66	57	58	55	56	63	56	58	59	55	56	63	56
B07771	66	49	51	51	53	51	55	50	52	53	53	53	55
B07772	66	50	52	52	53	52	56	51	53	53	54	53	56
B07882	66	56	56	68	69	60	60	57	57	68	66	59	60
B08058	66	51	52	55	55	58	55	52	52	55	55	58	55
B08059	66	50	50	63	62	55	55	52	51	64	62	56	55
B08060	66	40	42	48	47	48	44	41	41	48	46	47	43
B08061	66	40	42	47	45	49	43	40	41	46	45	48	43
B10318	66	57	58	56	58	64	57	57	59	56	58	63	58
B10373	66	51	52	52	52	51	54	51	53	53	53	52	54
B10374	66	50	52	52	52	51	53	51	53	52	53	52	54
B10375	66	50	52	51	52	51	53	50	53	52	53	52	53
B10376	66	50	52	51	52	51	52	50	52	52	52	52	52
B10377	66	50	52	51	52	51	52	51	53	52	53	52	53
B10378	66	51	52	52	52	51	53	51	53	52	53	52	53
B10379	66	51	52	51	52	51	52	51	53	52	53	52	53
B10380	66	50	52	51	52	51	52	51	53	52	53	52	52
B10381	66	50	51	51	51	50	51	50	52	52	52	51	51
B10382	66	50	51	50	51	50	50	50	52	51	52	51	51
B10383	66	50	52	51	52	51	51	51	52	52	52	51	51
B10384	66	50	52	51	52	51	51	51	52	52	52	51	52
B10385	66	51	52	51	52	51	52	51	53	52	52	52	53
B10386	66	50	52	51	51	50	52	51	52	52	52	51	52
B10387	66	50	52	51	51	50	52	51	52	51	52	51	52
B10388	66	50	52	51	51	50	52	51	52	52	52	51	52
B10389	66	50	52	51	52	51	52	50	52	52	52	52	52
B10390	66	49	51	51	52	50	51	50	52	52	52	52	52
B10391	66	49	51	50	51	50	50	49	52	51	52	51	51
B10395	66	58	60	48	48	48	52	59	61	48	48	48	52
B10396	66	53	54	49	49	49	52	53	55	49	50	49	53
B10397	66	52	53	50	50	49	53	53	54	50	50	49	53
B10398	66	52	53	51	51	50	54	52	53	51	51	50	54
B10399	66	53	54	53	53	52	56	53	54	53	53	52	56
B10400	66	51	52	52	52	51	56	52	53	51	52	52	56
B10401	66	53	54	53	53	53	58	53	54	53	53	54	58
B10402	66	54	55	54	54	54	59	54	55	54	54	55	59
B10404	66	59	60	60	60	59	61	59	60	59	60	60	61
B10405	66	55	57	55	56	57	59	56	57	55	56	58	59
B10406	66	53	58	59	59	53	60	53	57	60	60	52	60
B11737	66	52	51	64	63	57	61	53	51	64	63	58	61
B11738	66	52	52	63	61	57	57	54	53	63	61	58	58
B11739	66	47	47	60	58	52	52	49	48	60	58	52	52
B11740	66	47	47	59	57	52	52	49	48	59	57	52	52

Noise model results (dBA), without mitigation

Receiver	NAC	AM						PM					
		Existing	No Action	Freeway	Tollway	Regional Arterial	Combined	Existing	No Action	Freeway	Tollway	Regional Arterial	Combined
B11741	66	49	50	60	59	54	54	50	51	60	58	54	55
B11742	66	55	57	68	65	60	61	56	57	68	65	61	61
B11743	66	55	57	67	64	61	61	55	56	67	64	61	61
B11754	66	58	58	68	64	62	62	59	59	68	64	62	62
B11756	66	56	56	67	63	60	60	57	57	67	63	60	60
B11757	66	56	56	68	63	60	60	57	56	68	63	60	60
B11758	66	55	55	68	62	61	60	56	56	68	63	61	61
B11759	66	55	55	68	62	60	60	55	55	68	62	60	60
B11760	66	54	54	67	61	59	59	55	54	67	62	59	59
B11761	66	53	53	66	61	58	58	54	54	66	61	58	58
B11762	66	53	53	66	60	58	58	54	54	66	60	58	58
B11763	66	53	54	66	60	59	59	54	54	66	60	59	59
B11776	66	56	57	70	63	65	64	57	58	70	63	65	64
B12133	66	50	51	66	56	62	61	51	52	66	56	62	62
B12134	66	50	51	65	56	61	61	50	51	65	56	61	61
B12135	66	48	49	64	54	59	59	49	50	64	54	59	59
B12136	66	47	49	63	54	58	58	48	49	63	54	58	58
B12137	66	47	49	63	54	58	58	48	49	63	54	58	58
B12138	66	47	49	63	54	58	58	48	49	63	54	58	58
B12139	66	48	49	62	54	58	58	48	50	62	54	58	58
B12142	66	46	47	60	53	56	56	47	48	60	53	56	56
B12143	66	47	48	61	54	56	56	47	49	61	54	56	57
B12144	66	49	51	61	56	57	57	50	51	61	56	57	57
B12145	66	51	53	62	57	58	58	52	54	62	58	58	58
B12146	66	51	53	61	57	58	58	52	54	61	57	58	58
B12147	66	50	52	60	56	57	57	51	53	60	57	57	57
B12148	66	49	51	59	56	55	55	50	51	59	56	55	56
B12149	66	48	50	57	55	54	55	49	51	57	55	54	55
B12152	66	48	50	56	55	53	54	49	51	56	55	54	54
B12155	66	50	53	60	58	59	60	51	53	59	58	60	60
B12156	66	51	53	60	58	60	60	52	54	60	58	60	61
B12157	66	53	55	61	59	61	61	53	55	61	59	61	61
B12158	66	52	53	51	54	51	51	52	54	51	54	52	51
B12159	66	51	52	51	53	52	51	52	53	51	53	52	51
B12160	66	52	53	53	54	53	53	53	54	53	55	54	54
B12161	66	61	63	64	N/A	N/A	64	62	64	64	N/A	N/A	65
B12162	66	57	59	58	60	58	58	58	60	58	60	59	58
B12163	66	57	58	56	58	56	56	58	59	56	58	56	56
B12164	66	56	58	56	57	55	55	57	58	56	57	55	55
B12165	66	55	57	55	56	54	55	56	58	55	57	55	55
B12166	66	54	56	54	56	53	53	55	56	54	56	53	53
B12167	66	54	55	53	55	53	53	54	56	53	55	53	53
B12168	66	53	55	52	55	52	52	54	55	52	55	52	52
B12172	66	56	59	60	60	59	59	56	59	60	60	58	58
B12173	66	56	58	60	60	58	59	56	58	60	60	58	58
B12174	66	56	59	61	60	59	59	56	59	60	60	59	59
B12175	66	56	59	61	60	59	60	56	59	61	60	59	59
B12176	66	56	59	61	60	59	60	56	59	61	60	59	59
B12177	66	56	59	60	60	59	59	56	58	60	60	59	58

Noise model results (dBA), without mitigation

Receiver	NAC	AM						PM					
		Existing	No Action	Freeway	Tollway	Regional Arterial	Combined	Existing	No Action	Freeway	Tollway	Regional Arterial	Combined
B12178	66	56	59	60	60	59	59	56	59	60	60	58	58
B12179	66	56	59	60	60	59	59	56	59	60	60	59	58
B12180	66	57	60	60	60	59	60	57	60	60	60	59	59
B12181	66	57	60	61	60	59	60	57	60	61	60	59	59
B12182	66	57	59	60	60	59	59	57	60	60	60	59	58
B12183	66	56	59	60	60	59	59	57	60	60	60	59	58
B12184	66	58	61	61	61	60	60	58	61	61	61	60	59
B12185	66	58	61	61	61	60	60	58	61	61	61	60	59
B12186	66	56	58	60	60	59	59	56	58	60	60	58	58
B12187	66	56	58	60	60	59	59	56	58	60	60	58	58
B12188	66	56	58	60	60	59	59	56	58	60	60	58	58
B12189	66	56	58	60	60	59	59	56	58	60	60	58	58
B12190	66	56	59	61	60	59	59	56	58	61	60	59	59
B12191	66	59	61	62	62	61	61	59	61	62	62	60	60
B12192	66	59	61	62	62	61	61	59	61	62	62	61	61
B12193	66	59	61	63	63	61	62	59	61	63	62	61	61
B12194	66	59	61	63	63	61	62	59	61	63	62	61	61
B12195	66	59	61	63	63	61	62	59	61	63	62	61	61
B12196	66	59	61	63	63	61	62	59	61	63	62	61	61
B12197	66	58	60	62	61	60	60	58	60	62	61	60	60
B12198	66	58	60	62	62	60	61	58	60	62	61	60	60
B12199	66	58	60	62	62	60	61	58	60	62	61	60	60
B12200	66	57	58	60	60	58	59	57	58	60	59	58	58
B12201	66	59	60	62	62	60	61	59	60	62	61	60	60
B12202	66	59	60	62	62	60	61	59	60	62	61	60	60
B12203	66	58	59	61	61	60	60	58	59	61	60	59	59
B12204	66	58	59	61	61	60	60	58	59	61	60	59	59
B12205	66	58	59	61	60	59	60	58	59	61	60	59	59
B12206	66	59	60	62	62	60	61	59	60	62	61	60	60
B12207	66	58	59	61	60	59	60	58	59	61	60	59	59
B12208	66	58	59	61	60	60	60	58	59	61	60	59	59
B12209	66	58	60	61	61	60	60	59	60	61	61	60	60
B12210	66	59	60	62	61	60	61	59	60	62	61	60	60
B12211	66	57	58	60	59	58	59	57	58	60	59	58	58
B12212	66	57	58	60	59	58	59	57	58	60	59	58	58
B12213	66	56	58	60	59	58	58	57	58	59	59	58	58
B12214	66	57	58	60	60	58	59	57	58	60	59	58	58
B12215	66	57	58	60	60	59	59	57	58	60	60	58	59
B12216	66	57	58	60	60	59	59	58	58	60	60	59	59
B12218	66	55	56	58	58	57	57	55	56	58	57	57	57
B12219	66	55	56	58	58	57	57	56	56	58	58	57	57
B12220	66	56	57	58	58	57	58	56	57	58	58	57	57
B12221	66	63	64	67	65	64	66	64	64	67	66	64	65
B12222	66	58	60	62	61	60	60	59	60	62	61	60	60
B12493	66	52	55	56	56	56	56	53	55	56	57	56	56
B12494	66	51	53	54	55	54	55	52	54	55	56	55	56
B12497	66	51	53	55	56	55	55	52	54	55	56	55	56
B12498	66	53	55	56	57	56	57	54	56	57	58	57	57
B12499	66	52	54	53	54	53	55	52	55	54	55	55	55

Noise model results (dBA), without mitigation

Receiver	NAC	AM						PM					
		Existing	No Action	Freeway	Tollway	Regional Arterial	Combined	Existing	No Action	Freeway	Tollway	Regional Arterial	Combined
B12500	66	51	54	53	54	53	54	52	55	54	55	54	54
B12501	66	51	54	53	54	53	53	52	55	54	55	54	54
B12502	66	51	53	52	53	52	53	51	54	53	54	54	54
B12503	66	51	53	53	54	53	53	51	54	54	54	54	54
B12504	66	51	54	53	54	53	53	51	55	54	55	54	53
B12505	66	52	54	54	55	54	52	52	55	55	55	55	52
B12506	66	52	55	54	55	54	52	52	56	56	56	56	52
B15002	66	55	56	68	61	63	63	56	56	68	61	63	63
B15003	66	53	55	62	60	59	58	54	55	62	60	60	59
B15004	66	53	55	62	61	58	59	54	56	62	60	58	60
B15006	66	64	65	62	61	61	63	64	65	61	61	61	63
B15007	66	52	53	52	52	51	55	52	53	52	52	52	55
B15008	66	51	52	50	50	50	54	52	53	50	51	50	54
B15009	66	51	52	50	50	49	53	52	53	50	50	50	53
B15010	66	58	59	46	46	46	50	59	60	46	46	46	50
B15011	66	57	58	58	58	57	60	58	59	58	58	58	60
B15012	66	54	55	54	54	54	57	54	55	54	55	54	58
B15013	66	54	55	54	55	54	57	55	55	55	55	55	58
B15014	66	54	55	54	54	54	57	55	55	55	55	54	58
B15015	66	54	55	54	55	54	57	55	55	55	55	55	58
B15016	66	54	55	54	55	54	57	55	56	55	55	55	58
B15017	66	54	55	54	55	54	57	55	56	55	55	55	58
B15018	66	54	55	54	55	54	57	55	56	55	55	55	58
B15019	66	54	54	54	54	54	56	54	55	54	55	54	57
B15020	66	55	56	55	56	55	58	56	56	56	56	56	58
B15021	66	54	55	54	55	54	57	55	56	55	55	55	58
B15022	66	53	54	54	54	53	56	54	55	54	54	54	57
B15023	66	52	53	52	53	52	56	53	54	53	53	53	56
B15024	66	52	52	52	52	51	54	52	53	52	52	52	55
B15025	66	62	63	62	63	62	65	63	63	63	63	63	65
B15050	66	42	46	46	47	46	N/A	43	46	46	47	46	N/A
B15054	66	58	61	61	61	60	60	59	61	61	61	60	59
B15055	66	57	60	60	60	59	59	58	60	60	60	59	59
B15056	66	59	61	60	60	59	60	59	62	60	60	59	59
B15057	66	57	60	61	60	59	60	57	60	61	60	59	59
B15058	66	57	59	61	60	59	60	57	59	60	60	59	59
B15059	66	56	59	60	60	59	59	56	59	60	60	59	58
B15060	66	56	59	60	60	59	59	56	59	60	60	59	58
B15061	66	56	59	60	60	59	59	56	59	60	60	59	58
B15062	66	56	58	60	60	59	59	56	58	60	60	58	58
B15063	66	56	58	60	60	59	59	56	58	60	60	58	58
B15064	66	58	60	62	61	60	60	58	60	62	61	60	60
B15065	66	58	59	61	61	60	60	58	59	61	60	59	59
B15066	66	57	58	60	60	58	59	57	58	60	59	58	58
B15070	66	66	66	66	66	66	66	66	66	66	66	66	66
B15071	66	68	68	68	68	68	68	68	68	68	68	68	68
B15072	66	68	68	68	68	68	68	68	68	68	68	68	68
B15073	66	61	62	60	60	60	60	61	62	60	60	60	60
B15074	66	61	62	60	60	60	60	62	62	60	60	60	60

Noise model results (dBA), without mitigation

Receiver	NAC	AM						PM					
		Existing	No Action	Freeway	Tollway	Regional Arterial	Combined	Existing	No Action	Freeway	Tollway	Regional Arterial	Combined
B15075	66	66	66	66	66	66	65	66	66	66	66	66	66
B15076	66	65	65	64	64	64	64	65	65	64	64	64	64
B15077	66	64	64	63	63	62	62	64	64	63	63	63	63
B15078	66	63	63	62	62	62	62	63	63	62	62	62	62
B15079	66	63	63	62	62	62	62	63	63	62	62	62	62
B15080	66	64	65	64	64	64	64	65	65	64	64	64	64
B15081	66	65	65	64	64	64	64	65	65	64	64	64	64
B15082	66	66	66	65	65	65	65	66	66	65	65	65	65
B15083	66	66	66	65	65	65	65	66	66	65	65	65	65
B15125	66	58	60	61	61	60	60	58	60	61	61	60	60
B15126	66	56	59	60	60	59	59	56	59	60	60	59	58
B15127	66	57	60	60	60	59	60	57	60	60	60	59	59
B15128	66	58	61	63	62	61	62	58	61	63	62	61	61
B15129	66	58	61	63	63	61	62	59	61	63	63	61	61
B15130	66	57	61	63	63	61	62	58	61	63	62	61	61
B15131	66	57	60	63	62	61	62	58	60	63	62	61	61
B15132	66	57	60	62	62	61	61	57	60	62	62	61	60
B15133	66	58	61	63	63	61	62	58	61	63	63	61	61
B15137	66	55	56	69	61	59	59	56	57	69	61	59	59
B15146	66	63	65	64	63	63	64	64	65	64	63	63	63
B15147	66	53	55	58	62	57	61	54	56	58	62	57	61
B15148	66	54	56	61	65	62	64	55	57	61	65	62	64
B15149	66	54	56	61	68	62	65	55	57	61	68	62	65
B15150	66	48	49	70	68	N/A	62	49	49	70	68	N/A	62
B15151	66	52	53	69	65	62	62	53	53	69	65	62	62
B15155	66	56	58	N/A	N/A	67	N/A	58	59	N/A	N/A	67	N/A
B15156	66	60	62	70	66	65	66	61	62	70	66	66	66
B15158	66	50	53	54	54	54	54	51	54	54	55	54	55
B15159	66	50	53	54	54	54	54	51	53	54	55	54	55
B15160	66	51	54	55	56	55	56	52	55	55	56	55	56
B15161	66	63	66	66	67	66	N/A	64	67	67	68	67	N/A
B15162	66	63	65	65	66	65	N/A	64	66	66	67	66	N/A
B15163	66	47	50	50	51	50	53	48	51	51	52	51	53
B15164	66	62	64	64	65	64	64	63	65	65	66	65	65
B15173	66	56	58	57	58	57	62	57	59	58	59	59	62
B15174	66	59	61	60	61	60	64	60	62	61	62	61	64
B15175	66	59	61	60	61	61	63	60	62	62	62	62	63
B15176	66	57	59	58	59	58	59	58	60	59	60	59	60
B15177	66	50	52	51	52	51	53	51	53	52	53	53	53
B15183	66	49	51	50	51	50	50	49	51	51	51	50	50
B15184	66	49	51	50	51	50	50	50	52	51	51	50	50
B15185	66	50	51	50	51	50	50	50	52	51	52	51	50
B15186	66	50	51	51	51	50	51	50	52	51	52	51	51
B15187	66	50	52	51	52	51	52	51	52	52	52	51	52
B15188	66	49	51	50	50	50	50	49	51	51	51	50	50
B15189	66	49	50	50	50	49	49	49	51	50	51	50	50
B15264	66	60	61	70	61	66	66	60	61	70	61	66	66
B15265	66	55	58	60	60	58	59	56	58	60	60	58	58
B15266	66	51	52	51	52	51	52	51	53	52	52	51	52

Noise model results (dBA), without mitigation

Receiver	NAC	AM						PM					
		Existing	No Action	Freeway	Tollway	Regional Arterial	Combined	Existing	No Action	Freeway	Tollway	Regional Arterial	Combined
B15302	66	53	55	71	61	66	65	54	55	70	61	66	66
B15303	66	59	61	66	63	61	61	60	61	66	63	61	61
B15304	66	55	55	64	60	59	59	56	55	64	60	59	59
B15305	66	55	57	62	59	56	55	56	57	62	60	56	56
B15306	66	66	67	48	66	41	41	66	67	48	67	41	41
B15308	66	66	68	54	67	44	43	67	68	54	68	44	44
B15310	66	58	59	60	60	53	52	59	60	60	60	53	53
B15311	66	59	59	62	61	54	54	60	60	61	61	54	54
B15326	66	63	64	64	64	64	64	63	64	64	64	64	64
B15327	66	63	63	63	63	63	63	63	63	63	63	63	63
B15328	66	62	63	63	63	63	63	63	63	63	63	63	63
B15329	66	62	62	62	62	62	62	62	62	63	62	62	62
B15330	66	62	62	62	62	62	62	62	62	62	62	62	62
B15331	66	62	62	62	62	62	62	62	62	62	62	62	62
B15332	66	61	62	61	61	61	61	62	62	61	61	61	61
B15333	66	61	62	61	61	61	61	61	62	61	61	61	61
B15334	66	62	62	62	62	62	62	62	62	62	62	62	62
B15335	66	62	62	62	62	62	62	62	62	62	62	62	62
B15336	66	61	62	62	62	61	61	61	62	62	62	61	61
B15337	66	59	60	60	60	59	59	59	60	60	60	59	59
B15338	66	59	60	60	60	59	59	59	60	60	60	59	59
B15339	66	59	60	60	60	59	59	59	60	60	60	59	59
B15340	66	59	60	60	60	60	59	59	60	60	60	59	59
B15341	66	61	62	61	61	61	61	61	62	61	61	61	60
B15342	66	60	61	60	60	60	60	61	61	60	60	60	60
B15343	66	59	60	59	59	59	58	59	60	59	59	59	58
B15344	66	59	59	58	58	58	57	59	59	58	58	58	57
B15345	66	62	63	62	62	62	62	63	63	62	62	62	62
B15346	66	60	61	59	59	59	59	60	61	60	59	59	59
B15347	66	56	56	54	54	54	54	56	56	54	54	54	54
B15361	66	59	60	60	60	59	59	59	60	60	60	59	59
B15362	66	60	60	60	60	60	60	60	60	60	60	60	60
B15363	66	60	61	60	60	60	60	60	61	60	60	60	60
B15364	66	60	61	60	60	60	60	60	61	60	60	60	60
B15365	66	61	62	61	61	61	61	61	62	61	61	61	61
B15367	66	54	54	68	64	62	62	54	55	68	64	62	62
B15368	66	58	60	66	64	63	62	59	60	66	64	62	62
B15369	66	58	59	66	64	62	62	59	60	66	64	62	62
B15370	66	56	57	65	62	61	61	57	58	65	62	61	61
B15371	66	61	61	69	67	64	64	62	61	69	67	64	64
B15372	66	61	61	69	67	64	64	62	61	69	67	64	64
B15373	66	61	61	69	66	64	64	62	61	69	66	64	64
B15374	66	60	60	68	66	64	63	61	61	68	66	64	63
B15375	66	60	60	68	66	63	63	61	60	68	66	63	63
B15376	66	60	60	68	65	64	63	61	60	68	65	64	63
B15377	66	59	59	68	65	63	63	60	60	68	65	63	63
B15378	66	58	58	67	63	61	61	59	58	67	63	61	61
B15379	66	57	57	67	63	61	61	58	58	67	63	61	61
B15380	66	54	55	66	63	60	60	55	55	66	63	60	60

Noise model results (dBA), without mitigation

Receiver	NAC	AM						PM					
		Existing	No Action	Freeway	Tollway	Regional Arterial	Combined	Existing	No Action	Freeway	Tollway	Regional Arterial	Combined
B15381	66	58	60	N/A	N/A	N/A	N/A	59	60	N/A	N/A	N/A	N/A
B16000	66	58	58	67	64	61	61	59	58	67	64	61	61
B16001	66	58	59	66	64	62	62	59	59	66	64	62	62
B16002	66	56	56	64	62	59	59	57	57	64	62	59	59
B16003	66	54	54	64	60	57	57	54	54	64	60	57	57
B16004	66	57	57	66	61	61	61	58	57	66	61	61	61
B16005	66	51	52	63	57	57	57	52	53	63	57	57	57
B16006	66	48	50	65	54	60	60	49	50	65	55	60	60
B16007	66	44	45	61	48	57	57	45	46	61	48	57	57
B16008	66	48	49	61	51	57	56	49	50	61	51	57	57
B16009	66	47	48	60	50	55	55	47	49	60	50	55	55
B16010	66	47	48	N/A	54	57	57	48	49	N/A	54	57	57
B16011	66	47	48	64	54	59	59	48	49	64	54	59	59
B16012	66	46	48	62	52	58	57	47	49	62	52	58	58
B16013	66	46	48	54	53	51	52	47	49	54	53	52	52
B16014	66	50	52	59	57	57	58	50	51	59	56	57	58
B16015	66	50	52	63	60	57	62	50	51	63	60	57	62
B16016	66	49	52	57	56	57	58	50	51	57	55	56	58
B16017	66	50	52	56	54	57	53	50	51	55	54	57	53
B16021	66	41	43	47	46	48	44	41	42	47	45	48	44
B16022	66	43	45	48	47	53	45	43	43	48	46	52	45
B16023	66	42	45	49	48	53	46	43	44	48	47	52	45
B16024	66	59	61	73	64	65	65	60	61	73	64	65	65
B16025	66	57	58	58	58	57	62	58	58	58	58	57	62
B16026	66	50	51	51	51	53	52	50	51	51	52	53	52
B16027	66	55	56	56	57	59	57	56	56	57	57	59	58
B16028	66	54	55	55	55	56	57	54	54	55	55	56	57
B16029	66	56	58	57	57	56	56	56	57	57	57	56	56
B16030	66	52	54	54	55	54	61	52	55	55	56	55	62
B16031	66	58	60	60	61	60	60	58	61	62	62	62	61
B16032	66	55	57	68	61	61	61	56	57	68	62	60	61
C00002	71	60	61	59	58	58	58	61	62	60	59	58	59
C00016	71	57	58	57	58	57	59	57	58	57	58	57	59
C00017	71	52	53	52	53	52	55	53	54	53	53	53	55
C00073	71	54	56	56	55	55	56	55	57	56	55	55	55
C00429	71	60	62	62	62	61	61	61	62	63	62	61	61
C00430	71	59	62	63	63	63	62	60	61	64	63	62	62
C00431	71	59	61	63	63	62	62	59	61	63	62	62	61
C00432	71	61	62	62	62	61	61	62	63	62	62	61	60
C00595	71	52	54	70	66	65	65	53	54	70	66	65	65
C00596	71	49	50	72	68	66	66	49	51	72	68	66	66
C00597	71	44	45	74	70	68	68	45	46	74	70	68	68
C00598	71	43	44	N/A	N/A	N/A	N/A	43	44	N/A	N/A	N/A	N/A
C00599	71	44	45	N/A	N/A	N/A	N/A	45	46	N/A	N/A	N/A	N/A
C00600	71	58	59	71	67	65	65	59	60	71	67	65	65
C00601	71	59	60	72	68	66	66	60	61	72	68	66	66
C00602	71	61	62	74	69	69	69	61	62	74	69	69	69
C00603	71	58	59	72	63	67	67	58	59	72	63	67	67
C00624	71	60	61	70	60	65	65	60	61	69	61	65	65

Noise model results (dBA), without mitigation

Receiver	NAC	AM					PM						
		Existing	No Action	Freeway	Tollway	Regional Arterial	Combined	Existing	No Action	Freeway	Tollway	Regional Arterial	Combined
C00625	71	59	60	69	60	65	64	60	61	69	60	65	65
C00653	71	49	53	53	54	53	57	50	53	53	54	54	57
C00947	71	54	57	62	62	N/A	62	54	57	62	62	N/A	62
C00948	71	60	63	69	68	68	69	60	63	69	69	68	69
C00949	71	59	62	68	68	67	68	59	62	68	68	67	68
C00950	71	56	59	65	64	65	64	56	59	65	64	65	64
C00951	71	50	53	N/A	60	60	60	51	53	N/A	60	60	60
C00952	71	54	58	62	61	62	61	54	58	62	61	62	61
C00953	71	56	60	62	61	64	61	56	60	62	62	64	62
C00954	71	58	63	59	57	67	57	58	62	59	58	67	57
C00955	71	57	62	58	57	65	57	57	61	58	57	65	57
C00956	71	57	62	60	59	65	59	57	61	60	60	65	60
C00957	71	58	62	57	56	67	56	58	62	57	56	67	56
C00960	71	57	61	63	63	64	63	57	61	63	63	63	63
C00967	71	65	66	75	66	69	69	66	67	75	67	69	69
C01228	71	60	61	57	58	56	57	60	62	57	58	57	57
C01229	71	61	62	58	60	56	56	62	63	59	60	56	57
C01230	71	62	63	59	61	58	58	63	64	59	61	58	58
C01231	71	63	64	67	65	65	66	64	65	67	64	65	65
C01362	71	60	62	63	63	62	62	61	62	63	63	62	62
C01363	71	61	62	64	64	62	62	62	62	64	64	62	62
C01364	71	59	62	64	64	63	63	60	62	64	64	62	62
C01365	71	60	63	65	65	64	64	60	62	65	64	64	63
C01366	71	56	57	63	63	61	61	57	59	64	62	61	62
C01367	71	57	58	63	64	62	62	57	59	64	62	62	63
C01368	71	55	57	64	64	63	64	56	57	64	63	62	64
C01369	71	56	58	65	65	64	64	57	58	65	63	63	65
C01370	71	59	60	66	65	65	66	60	61	66	65	64	66
C01371	71	62	62	66	66	66	66	62	64	67	65	67	67
C01380	71	61	62	66	65	63	67	60	61	66	65	63	67
C01387	71	60	60	60	60	58	60	60	60	60	60	60	60
C01388	71	58	59	59	59	57	59	59	59	59	59	59	58
C01405	71	66	66	67	66	66	66	66	66	66	66	66	66
C01460	71	60	62	61	62	61	63	60	63	62	63	62	63
C01466	71	61	62	61	62	62	61	61	63	63	63	63	62
C01467	71	60	62	61	62	61	62	61	63	62	63	63	63
C01471	71	62	64	65	66	64	75	63	65	66	66	66	74
C01474	71	63	66	66	67	66	81	64	67	67	68	67	80
C01479	71	64	67	67	68	67	N/A	65	68	68	69	68	N/A
C01482	71	59	62	63	64	63	67	60	63	64	64	64	67
C01491	71	55	57	59	60	59	61	56	58	59	60	59	62
C01498	71	57	59	61	62	61	62	58	60	61	62	61	62
C01499	71	53	56	57	58	57	57	54	56	57	58	57	58
C01501	71	52	56	56	57	56	58	53	57	57	58	57	58
C01502	71	64	68	68	69	68	69	65	68	68	69	68	69
C01503	71	64	68	68	68	68	68	65	68	68	69	68	68
C01504	71	64	68	68	69	68	68	65	68	68	69	68	68
C01505	71	62	66	66	67	66	72	63	67	67	68	67	72
C01506	71	62	66	66	66	66	72	63	66	66	67	66	72

Noise model results (dBA), without mitigation

Receiver	NAC	AM					PM						
		Existing	No Action	Freeway	Tollway	Regional Arterial	Combined	Existing	No Action	Freeway	Tollway	Regional Arterial	Combined
C01507	71	54	58	58	59	58	62	55	59	58	60	59	62
C01647	71	64	66	64	66	59	59	65	67	64	67	59	59
C01648	71	67	68	63	67	57	57	68	69	63	68	57	57
C01649	71	63	65	63	64	57	57	64	65	63	65	57	57
C01650	71	61	63	64	63	58	58	62	63	64	64	58	58
C01651	71	61	63	57	61	50	50	62	63	57	62	51	50
C01812	71	52	54	67	61	62	62	53	54	67	61	62	62
C01959	71	64	65	63	65	63	64	65	66	63	65	63	63
C01960	71	61	62	59	59	58	58	62	63	60	60	58	59
C02419	71	61	66	59	58	N/A	58	62	66	59	58	N/A	58
C02420	71	35	37	63	57	N/A	57	36	38	63	57	N/A	58
C02421	71	N/A	N/A	57	55	N/A	55	N/A	N/A	57	55	N/A	55
C03002	71	61	62	64	62	63	64	62	63	64	62	64	64
C03039	71	61	63	68	67	65	66	62	64	68	67	65	66
C03156	71	49	53	53	54	53	54	50	53	53	54	53	54
C04020	71	64	65	64	63	64	65	65	66	64	63	64	65
C04033	71	63	65	66	67	65	N/A	64	66	67	67	67	N/A
C04590	71	46	49	50	50	50	53	46	50	50	51	50	53
C04591	71	39	43	43	44	43	N/A	40	43	43	44	43	N/A
C04592	71	35	39	39	40	39	N/A	36	39	40	40	40	N/A
C04797	71	62	63	67	66	64	68	61	61	67	66	64	68
C05058	71	65	65	65	65	65	65	65	65	65	65	65	65
C05059	71	59	60	60	60	60	60	59	60	60	60	60	60
C05060	71	52	56	56	56	56	57	53	56	56	57	56	57
C05061	71	62	66	66	67	66	66	63	66	66	67	66	66
C05063	71	63	66	67	68	67	67	64	67	67	68	68	67
C05075	71	47	49	48	49	48	50	47	50	50	50	50	51
C05080	71	49	50	48	49	48	50	49	50	49	49	49	51
C05081	71	49	50	48	49	48	51	49	51	49	50	49	51
C05091	71	61	63	64	65	63	65	62	64	65	65	65	66
C05103	71	62	64	62	62	61	61	62	65	62	62	60	60
C05104	71	60	63	62	62	60	61	60	63	62	62	60	60
C05109	71	63	65	62	62	62	61	65	66	63	62	61	61
C05110	71	62	63	62	62	61	61	63	64	62	62	61	61
C05360	71	57	59	66	64	58	58	58	59	66	64	58	58
C06095	71	63	64	64	64	64	64	64	64	64	64	64	64
C06133	71	43	47	47	48	47	N/A	44	47	47	48	48	N/A
C06135	71	34	37	37	38	38	N/A	34	38	38	39	38	N/A
C07079	71	54	53	64	62	59	56	55	54	65	63	60	57
C07080	71	59	60	64	64	64	65	60	62	65	63	64	66
C07081	71	58	59	64	63	64	64	59	61	64	62	64	65
C07082	71	48	49	N/A	N/A	N/A	72	49	49	N/A	N/A	N/A	72
C07083	71	55	56	55	56	54	55	57	58	54	56	55	55
C07084	71	56	56	59	57	57	59	56	57	59	57	57	58
C07085	71	63	64	58	62	58	58	64	65	58	62	58	58
C07086	71	51	55	55	56	55	56	52	55	55	56	55	56
C07087	71	64	66	66	68	66	N/A	65	67	68	68	68	N/A
C07088	71	56	58	58	60	58	63	57	59	60	60	59	63
C07089	71	62	65	64	66	64	50	61	66	66	66	66	50

Noise model results (dBA), without mitigation

Receiver	NAC	AM						PM					
		Existing	No Action	Freeway	Tollway	Regional Arterial	Combined	Existing	No Action	Freeway	Tollway	Regional Arterial	Combined
C07090	71	46	47	47	47	47	49	47	48	48	48	47	50
C07883	71	54	54	N/A	N/A	58	58	55	55	N/A	N/A	57	58
C07884	71	54	54	66	66	59	61	55	55	65	63	58	61
C08017	71	57	59	62	62	62	62	58	61	64	62	62	62
C08026	71	54	55	62	61	59	60	55	56	62	60	59	60
C08027	71	54	55	63	62	60	60	55	56	63	61	59	61
C10316	71	47	50	52	52	59	52	48	50	52	52	59	52
C10392	71	48	49	48	49	48	50	48	50	49	49	49	51
C10393	71	49	50	49	50	49	51	50	51	50	50	50	52
C10394	71	53	53	52	53	52	55	53	54	53	53	53	56
C10403	71	55	56	55	56	55	63	55	56	55	55	56	63
C12904	71	35	39	39	39	39	N/A	36	39	39	40	39	N/A
C12905	71	28	32	32	33	32	N/A	29	32	32	33	32	N/A
C12906	71	50	50	50	50	50	52	50	51	50	51	50	52
C12907	71	51	51	50	51	50	53	51	52	51	51	51	54
C12908	71	54	57	57	58	57	60	55	57	58	59	58	60
C15000	71	61	62	73	65	69	68	62	63	73	65	69	68
C15005	71	55	55	64	63	60	61	56	56	64	62	59	61
C15026	71	57	58	63	62	63	63	58	59	64	61	63	64
C15051	71	60	64	64	65	64	65	61	65	65	66	65	66
C15053	71	61	63	61	61	59	60	61	64	61	60	59	59
C15067	71	61	62	62	62	61	61	61	62	63	63	62	61
C15068	71	62	63	63	63	63	63	63	63	63	63	63	63
C15069	71	60	60	60	60	60	60	60	60	60	60	60	60
C15121	71	57	57	56	56	55	55	57	58	56	56	55	55
C15135	71	45	47	72	68	66	66	46	47	72	68	66	66
C15136	71	49	50	72	68	66	66	50	51	72	68	67	66
C15138	71	48	51	58	57	59	57	49	52	58	57	58	57
C15139	71	48	51	58	57	59	57	49	51	58	57	59	58
C15154	71	62	61	72	68	65	65	63	62	72	68	65	65
C15157	71	43	46	52	52	N/A	52	44	46	52	52	N/A	52
C15165	71	53	55	54	55	54	56	54	56	56	56	56	57
C15166	71	58	60	59	60	59	58	59	61	60	61	60	59
C15167	71	53	54	54	55	54	54	53	55	55	56	55	55
C15168	71	52	54	53	54	53	54	52	54	54	55	54	55
C15169	71	53	55	54	55	54	56	54	56	56	56	56	56
C15170	71	52	54	54	54	54	55	53	55	55	55	55	55
C15171	71	50	52	52	52	52	53	51	53	53	53	53	53
C15172	71	51	53	52	53	52	54	52	54	54	54	54	54
C15178	71	64	67	66	68	66	52	63	67	67	68	68	52
C15179	71	62	64	64	65	64	54	61	65	65	66	65	54
C15180	71	62	65	64	65	64	57	61	65	65	66	65	57
C15181	71	64	66	66	67	67	65	65	67	68	68	68	66
C15182	71	62	65	64	65	64	65	63	65	65	66	66	66
C15309	71	48	49	67	63	60	60	48	49	67	63	60	60
C15366	71	N/A	N/A	65	62	N/A	62	N/A	N/A	65	62	N/A	62
C16018	71	46	48	54	52	54	52	47	47	54	52	54	52
C16019	71	49	51	57	56	56	53	49	50	57	55	56	53

Noise model results (dBA), without mitigation

<u>Receiver</u>	AM							PM					
<u>Receiver</u>	NAC	Existing	No Action	Freeway	Tollway	Regional Arterial	Combined	Existing	No Action	Freeway	Tollway	Regional Arterial	Combined
C16020	71	50	52	59	58	57	55	50	51	59	57	57	55