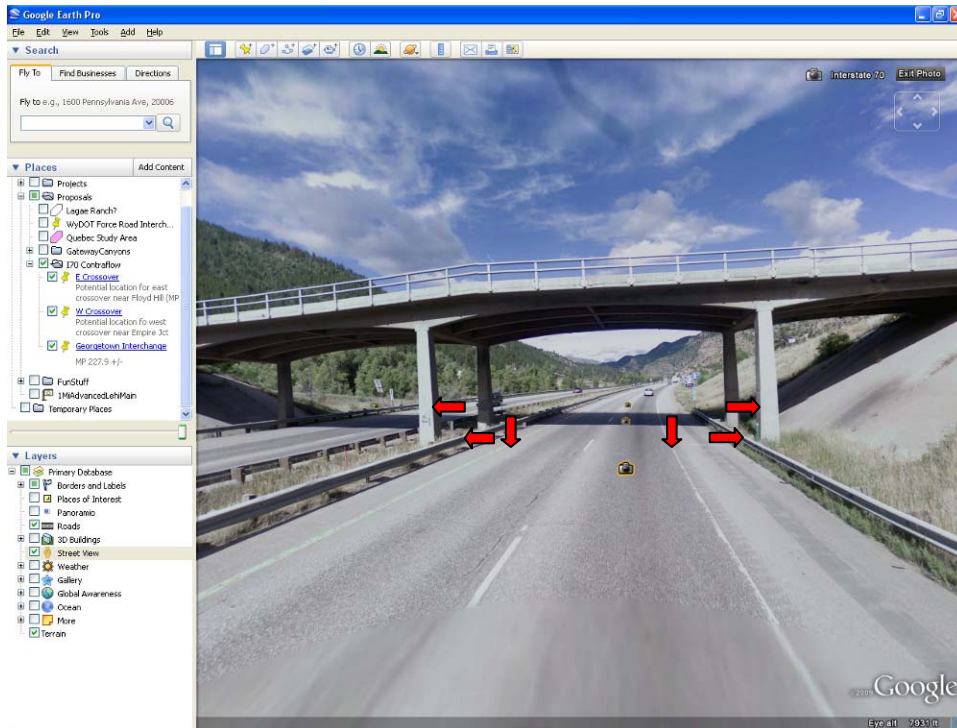
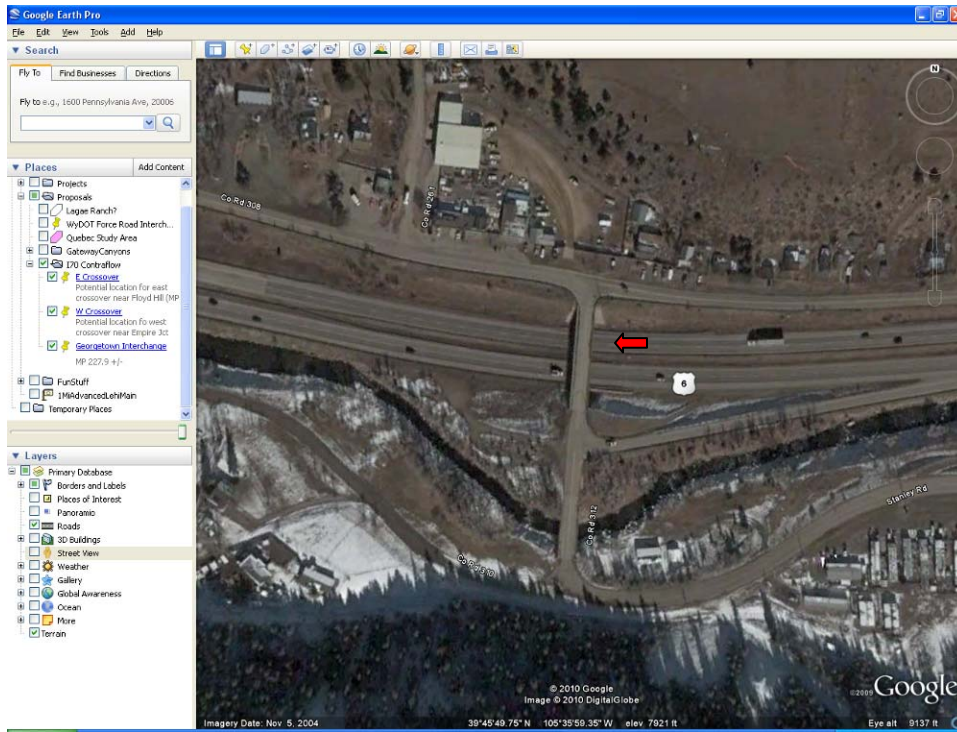
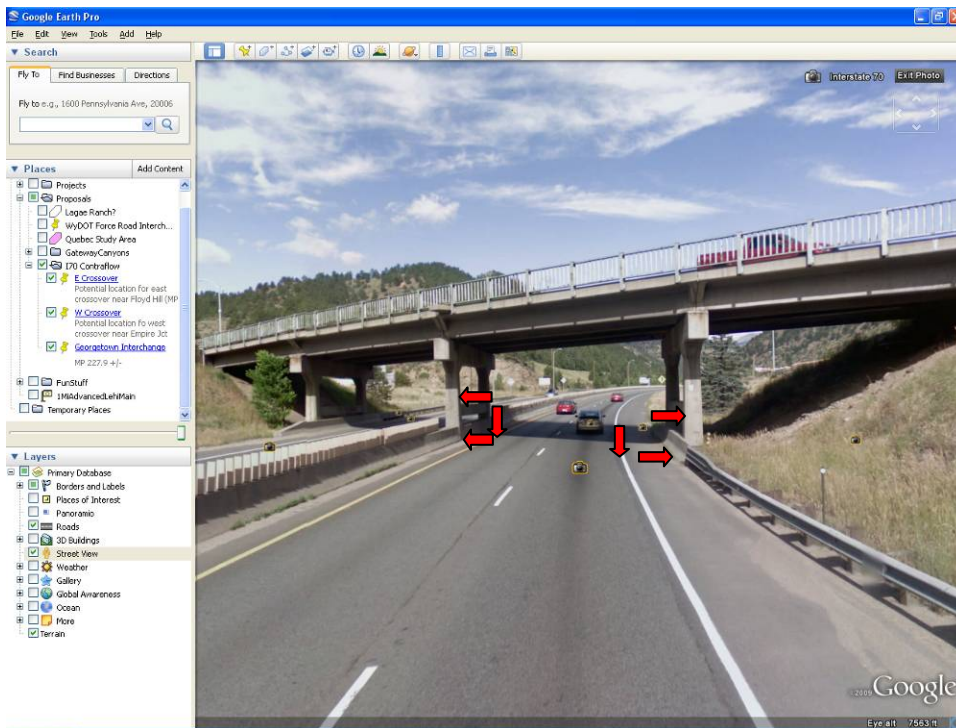
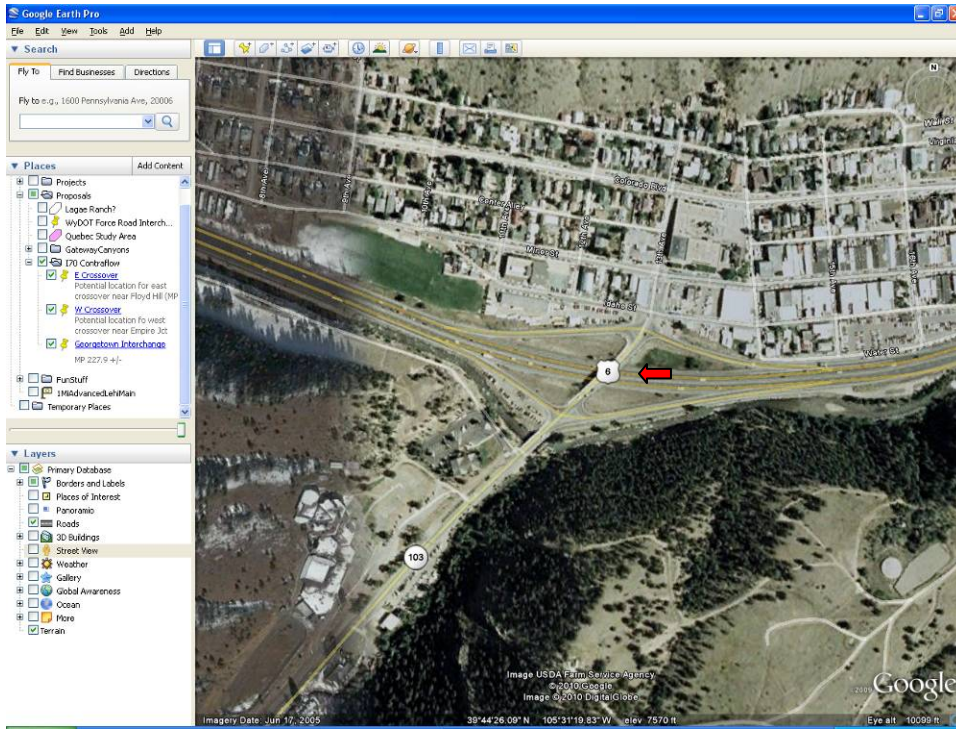


## CR 312 overpass on I-70 WB at Downieville, MP 235.00 +/-



Left face of pier, left face of guardrail, left edge line, right edge line, right face of guardrail, right face of pier. Middle stripe can be interpolated.

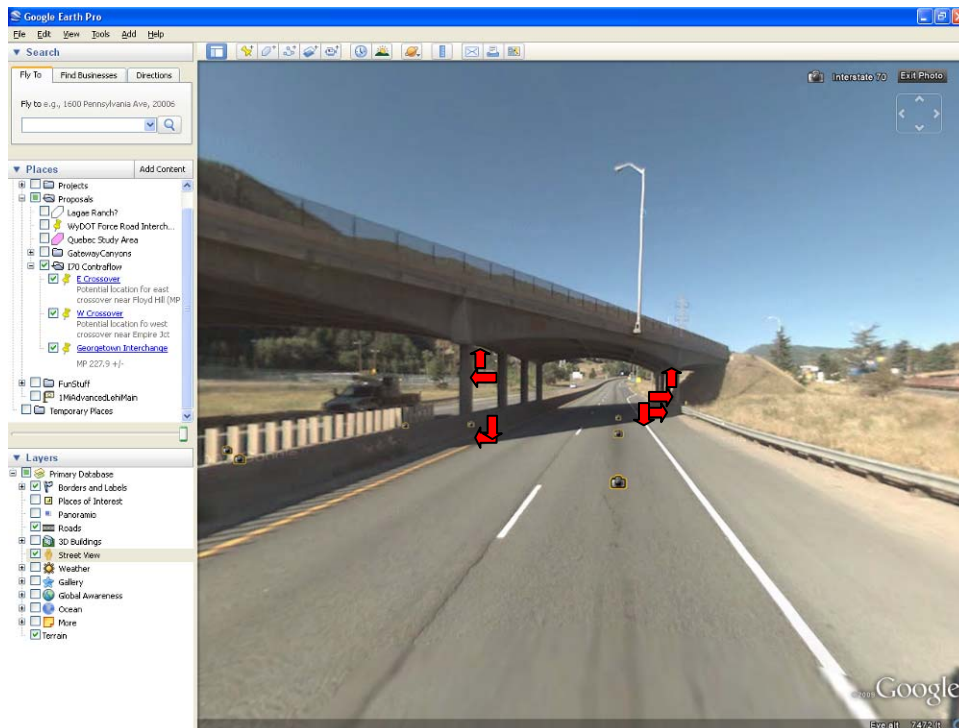
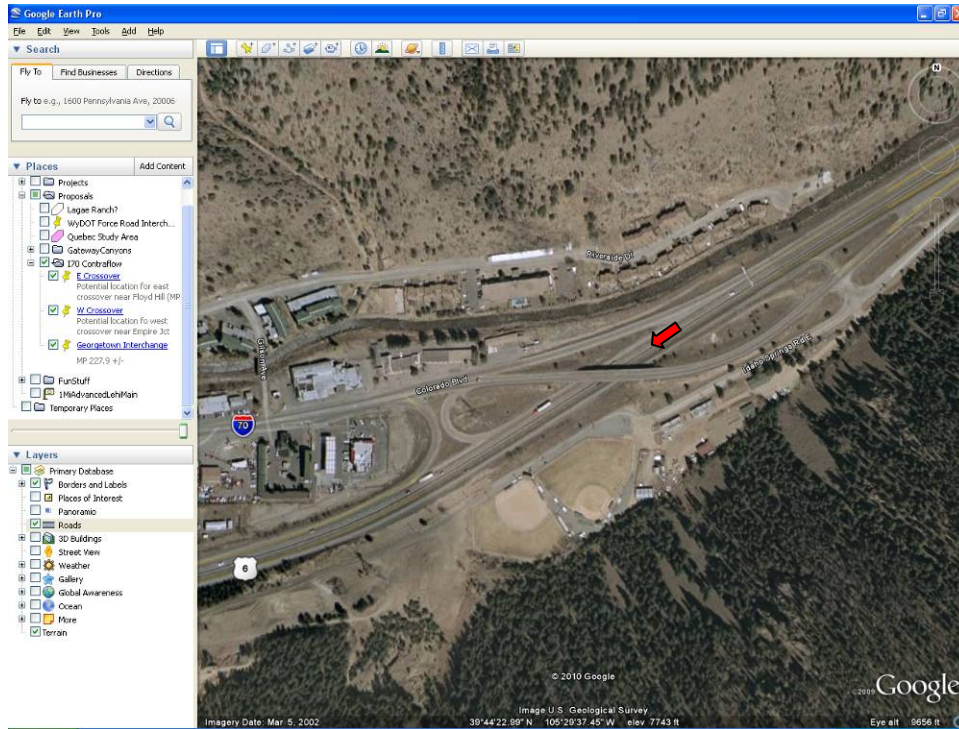
**SH 103 (Mt Evans Road) overpass on I-70 WB at Idaho Springs, MP 239.65 +/-**



Left face of pier, left toe of barrier, left edge line, right edge line, right toe of barrier, right face of pier.  
Middle stripe can be interpolated.

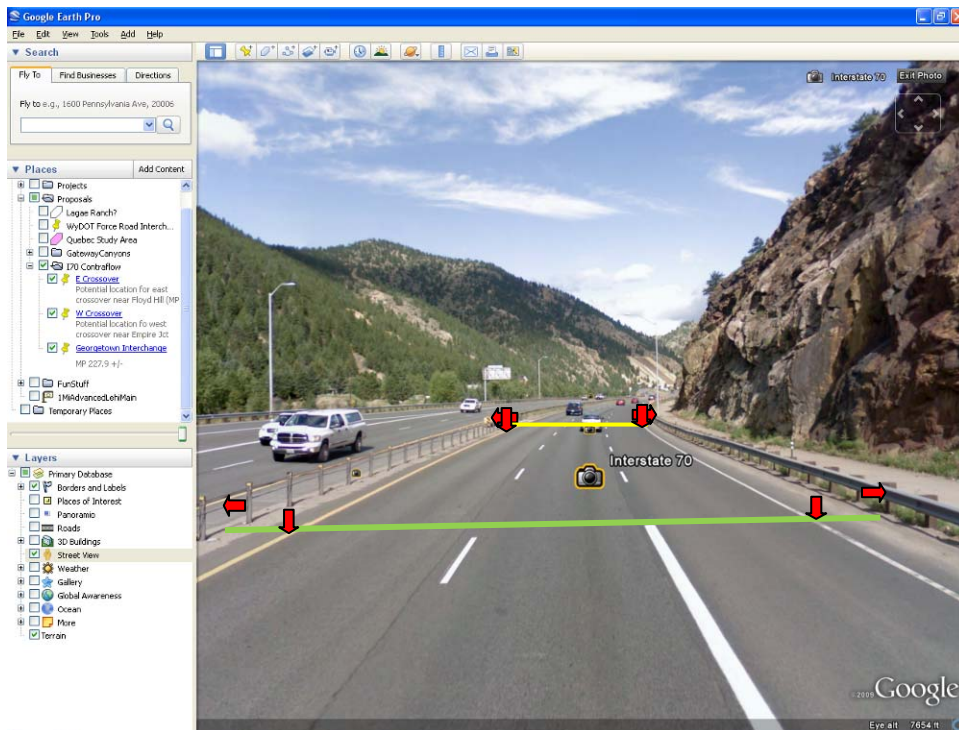
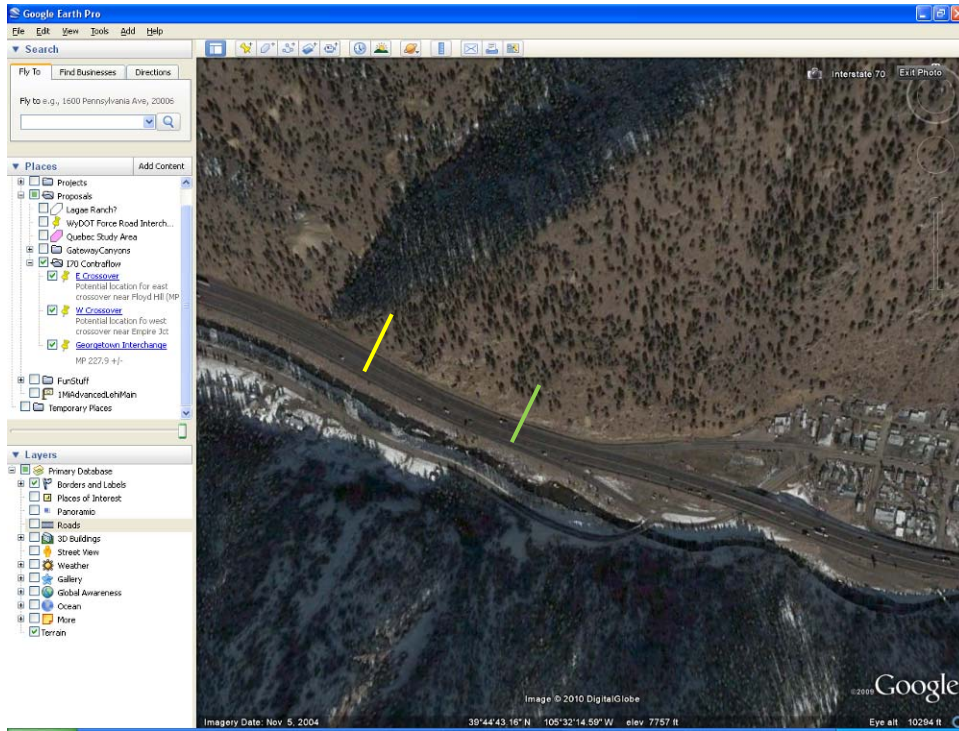


## Colorado Boulevard overpass on I-70 WB at Idaho Springs, MP 241.10 +/-



Left vertical clearance (over toe of barrier), left face of pier, left toe of barrier, left edge line, right vertical clearance (over toe of barrier), right edge line, right toe of barrier, right face of pier. Middle stripe can be interpolated.

**Colorado Boulevard entrance ramp to I-70 WB at Idaho Springs (west), MP 238.70 +/-**



Two locations – end of the solid white stripe (indicated by green line in photo above) and end of cable guard rail (indicated by yellow line in photo above) – Obtain left face of cable rail / guardrail, left edge line, right edge line, right face of guardrail. Middle stripes can be interpolated.