

Technical Memorandum No. 4

Project No. C SWOO-242

Data Collection and Evaluation of Railroad Project
May 18, 2005



Table of Contents	Page
Introduction	1
Literature Review	1
Previous Studies	5
Ongoing Studies.....	8
Additional Data Collection.....	10
No-Build Data	43
Build Data	50
Evaluation of the Railroads Costs.....	57
Executive Summary - Public Involvement Results.....	60
Study Glossary	82

List of Figures

4.2.1 Existing Train Counts - Year 2004 - State.....	19
4.2.2 Existing Train Counts - Year 2004 - Denver	20
4.2.3 BNSF Segment Id's State	21
4.2.4 BNSF Segment Id's Denver	22
4.2.5 UP Segment Id's State	23
4.2.6 UP Segment Id's Denver	24
4.2.7 Existing Train Volumes - 2004 - BNSF - State	25
4.2.8 Existing Train Volumes - 2004 - BNSF - Denver	26
4.2.9 Existing Train Volumes - 2004 - UP - State	27
4.2.10 Existing Train Volumes - 2004 - UP - Denver	28
4.2.11 Railroad Yard Map - 2004 - State	31
4.2.12 Railroad Yard Map - 2004 - Denver	32
4.2.13 Existing Land Use- 2004	40
4.2.14 Sample Corridor - Existing Land Use Noise Receptors	41
4.3.1 No-Build Train Counts - Year 2030 - State.....	44
4.3.2 No-build Train Counts - Year 2030 - Denver.....	45
4.3.3 No-Build Train Volumes - 2030 - BNSF - State	46
4.3.4 No-Build Train Volumes - 2030 - BNSF - Denver	47
4.3.5 No-Build Train Volumes - 2030 - UPRR - State	48
4.3.6 No-Build Train Volumes - 2030 - UPRR - Denver	49
4.4.1 Build Train Counts - Year 2030 - State.....	51
4.4.2 Build Train Counts - Year 2030 - Denver.....	52
4.4.3 Build Train Volumes - 2030 - BNSF - State.....	53
4.4.4 Build Train Volumes - 2030 - BNSF - Denver	54
4.4.5 Build Train Volumes - 2030 - UPRR - State	55





4.4.6 Build Train Volumes - 2030 - UPRR - Denver 56

List of Tables

4.2.1 BNSF Master Train Counts - No-Build 11
4.2.2 BNSF Master Train Counts - Build 12
4.2.3 UPRR Master Train Counts - No-Build 13
4.2.4 UPRR Master Train Counts - Build..... 14
4.2.5 Existing BNSF Track Data - 2004 15
4.2.6 Existing BNSF Train Data - 2004..... 16
4.2.7 Existing UPRR Track Data - 2004 17
4.2.8 Existing UPRR Train Data - 2004 18
4.2.9 Existing BNSF Yard Data - 2004..... 29
4.2.10 Existing UPRR Yard Data - 2004 30
4.2.11 Existing At-grade Crossings 33
4.2.12 Existing At-grade Crossings 34
4.2.13 Existing At-grade Crossings 35
4.2.14 Existing At-grade Crossings 36
4.2.15 Existing At-grade Crossings 37
4.2.16 Existing At-grade Crossings 38
4.2.17 Existing At-grade Crossings 39
4.2.18 Land Use Acres..... 42
4.5.1 The Railroad Project - Cost 58
4.5.2 Capital Cost Summary Comparison 59

All information and assessments contained herein are the sole responsibility of the Consultant. Although many other parties contributed substantially to the report, they shall not be held accountable for its accuracy.



public Benefits & Costs study

of the Proposed BNSF/UP Front Range Railroad Infrastructure Rationalization Project



Table 4.2.1 BNSF Master Train Counts - No Build

Segment ID	Segment Description				Ownership				Train Type Data								Totals				
									Passenger		Coal		Manifest		Locals						
	Between	And	Segment Length (mi.)	2003	Trackage Rights?	2030	Trackage Rights?	2003	2015	2003	2015	2003	2015	2003	2015	2003	2015	2030 assuming 1% increase from 2015	Change		
B-1	Sidney	NE	Sterling	CO	40.14	BNSF	No	BNSF	No			16	20.8	4	5.1			20.0	25.8	30.0	10.0
B-2	Sterling	CO	Venango	NE	68.14	BNSF		BNSF				1	1.3	0.5	0.6			1.5	1.9	2.2	0.7
B-3	Union	CO	Brush Center	CO	10.77	BNSF	No	BNSF	No			16	20.8	4	5.1			20.0	25.9	30.0	10.0
B-4	Brush Center	CO	Sanborn	NE	88.58	BNSF		BNSF					8	10.2		2	2.5	12.0	12.7	14.7	2.7
B-5	Brush Center	CO	Wiggins	CO	30.23	BNSF	No	BNSF	No	2		16	20.8	8	10.2			26.0	31.0	35.9	9.9
B-6	Wiggins	CO	Hudson	CO	28.27	BNSF	No	BNSF	No	2		16	20.8	8	10.2			26.0	31.0	35.9	9.9
B-7	Hudson	CO	Sand Creek Jct	CO	24.96	BNSF	No	BNSF	No	2		16	20.8	8	10.2	6	7.6	32.0	38.6	44.8	12.8
B-8	Sand Creek Jct	CO	20th Street Jct	CO	4.48	BNSF	No	BNSF	No	2		16	20.8	8	10.2	6	7.6	32.0	38.6	44.8	12.8
B-9	20th Street Jct	CO	South Park Jct	CO	2.73	BNSF/UPRR		BNSF/UPRR				16	20.8	5	6.3			21.0	27.1	31.5	10.5
B-10	South Park Jct	CO	Palmer Lake	CO	48.77	BNSF/UPRR		BNSF/UPRR				16	20.8	5	6.3	3	3.8	24.0	30.9	35.8	11.8
B-11	Palmer Lake	CO	Crews	CO	31.38	BNSF/UPRR		BNSF/UPRR				16	20.8	5	6.3	3	3.8	24.0	30.9	35.8	11.8
B-12	Crews	CO	Pueblo Jct	CO	36.12	BNSF/UPRR		BNSF/UPRR				16	20.8	5	6.3	2	2.5	23.0	29.6	34.3	11.3
B-13	Pueblo Jct	CO	Walsenberg	CO	52.31	BNSF/UPRR		BNSF/UPRR				8	10.4	2	2.5			10.0	12.9	15.0	5.0
B-14	Walsenberg	CO	West Trinidad	CO	40.75	BNSF/UPRR		BNSF/UPRR				8	10.4	2	2.5			10.0	12.9	15.0	5.0
B-15	West Trinidad	CO	Raton	NM	22.66	BNSF	No	BNSF	No	2				1	1.3			3.0	1.3	1.5	-1.5
B-16	West Trinidad	CO	Branson	CO	50.43	BNSF	No	BNSF	No			8	10.4	2	2.5			10.0	12.9	15.0	5.0
B-17	West Trinidad	CO	La Junta	CO	81.24	BNSF	No	BNSF	No	2				3	3.8			5.0	3.8	4.4	-0.6
B-18	Pueblo Jct	CO	NA Jct	CO	26.07	BNSF/UPRR		BNSF/UPRR				8	10.4	2	2.5	2	2.5	12.0	15.4	17.9	5.9
B-19	NA Jct	CO	La Junta	CO	36.36	BNSF/UPRR	No	BNSF/UPRR	No			8	10.4	2	2.5	2	2.5	12.0	15.4	17.9	5.9
B-20	La Junta	CO	Las Animas Jct	CO	21.70	BNSF/UPRR	No	BNSF/UPRR	No	2		8	10.4	2	2.5	1	1.3	13.0	14.2	16.5	3.5
B-21	Las Animas Jct	CO	South Jct	CO	63.45	BNSF/UPRR	No	BNSF/UPRR	No			8	10.4	2	2.5			10.0	12.9	15.0	5.0
B-22	South Jct	CO	Boise City	OK	51.65	BNSF/UPRR	No	BNSF/UPRR	No			8	10.4	2	2.5			10.0	12.9	15.0	5.0
B-24	Las Animas Jct	CO	Coolidge	KS	64.74	BNSF/UPRR	No	BNSF/UPRR	No	2				2	2.5			4.0	2.5	2.9	-1.1
B-25	20th Street Jct	CO	Prospect Jct	CO	0.53	BNSF	No	BNSF	No			1	1.3	4	5.1	2	2.5	7.0	8.9	10.3	3.3
B-26	Prospect Jct	CO	Boulder	CO	26.64	BNSF	No	BNSF	No			1.0	1.3	2	2.5	1	1.3	4.0	5.1	5.9	1.9
B-27	Boulder	CO	Fort Collins	CO	44.11	BNSF	No	BNSF	No					2	2.5	1	1.3	3.0	3.8	4.4	1.4
B-28	Fort Collins	CO	Cheyenne	WY	45.37	BNSF	No	BNSF	No					2	2.5	1	1.3	3.0	3.8	4.4	1.4
B-30	C&S Jct	CO	Golden	CO	9.17	BNSF		BNSF						2	2.5	4	5.1	6.0	7.6	8.8	2.8
B-31	South Park Jct	CO	Arapahoe Power	CO	5.41	BNSF		BNSF				0.5	0.7	1	1.3			1.0	2.0	8.8	7.8
S-1	NA Jct	CO	Towner	CO	60.38	CKT	No	CKT	No												
S-2	Eaton	CO	Loveland	CO	25.27	GWR		GWR													
S-3	Officer Jct	CO	Longmont	CO	23.86	GWR		GWR													
S-4	Dent	CO	Welty	CO	11.09	GWR		GWR													
S-5	Walsenberg	CO	Alamosa Jct	CO	76.73	SLRG		SLRG													
S-6	Alamosa Jct	CO	Derrick	CO	69.98	SLRG		SLRG													
S-7	Alamosa Jct	CO	Antonito	CO	29.28	SLRG		SLRG													
S-8	Fort Collins	CO	Greeley	CO	23.70	GWRR		GWRR										0.0	0.0	0.0	0.0
S-9	South Jct	CO	Saunders	KS	32.50	CVR		CVR										0.0	0.0	0.0	0.0
S-10	Canon City	CO	Parkdale	CO	10.00	RGX		RGX													
N-1	Omar	CO	Peoria	CO	35.31	New	New	TBD	TBD												
N-2	Aroya	CO	Las Aminos Jct	CO	54.51	New	New	TBD	TBD												

Data provided by BNSF through 2015, consultant estimate to 2030.



public Benefits & Costs study

of the Proposed BNSF/UP Front Range Railroad Infrastructure Rationalization Project



Table 4.2.2 BNSF Master Train Counts - Build

Segment ID	Segment Description				Ownership				Train Type Data								Totals				
									Passenger		Coal		Manifest		Locals						
	Between	And	Segment Length (mi.)	2003	Trackage Rights?	2030	Trackage Rights?	2003	2015	2003	2015	2003	2015	2003	2015	2003	2015	2030 assuming 1% Increase from 2015	Change		
B-1	Sidney	NE	Sterling	CO	40.14	BNSF	No	BNSF	No			16	20.8	4	5.1			20.0	25.8	30.0	10.0
B-2	Sterling	CO	Venango	NE	68.14	BNSF-NKCR		BNSF				1	1.3	0.5	0.6			1.5	1.9	2.2	0.7
B-3	Union	CO	Brush Center	CO	10.77	BNSF	No	BNSF	No			16	20.8	4	5.1			20.0	25.9	30.0	10.0
B-4	Brush Center	CO	Sanborn	NE	88.58	BNSF		BNSF		2		0		8	10.2	2	2.5	12.0	12.7	14.7	2.7
B-5	Brush Center	CO	Omar	CO	30.23	BNSF	No	BNSF	No	2		16	20.8	8	10.2			26.0	31.0	35.9	9.9
B-6	Omar	CO	Hudson	CO	28.27	BNSF	No	BNSF	No	2		16	0.0	8	8.2			26.0	8.2	9.5	-16.5
B-7	Hudson	CO	Sand Creek Jct	CO	24.96	BNSF	No	BNSF	No	2		16	0.0	8	8.2	6	7.6	32.0	15.8	18.3	-13.7
B-8	Sand Creek Jct	CO	20th Street Jct	CO	4.48	BNSF	No	BNSF	No	2		16	0.0	8	8.2	6	7.6	32.0	15.8	18.3	-13.7
B-9	20th Street Jct	CO	South Park Jct	CO	2.73	BNSF/UPRR		BNSF/UPRR				16	0.0	5	5.3			21.0	5.3	6.2	-14.8
B-10	South Park Jct	CO	Palmer Lake	CO	48.77	BNSF/UPRR		BNSF/UPRR				16	0.0	5	5.3	3	3.8	24.0	9.1	10.6	-13.4
B-11	Palmer Lake	CO	Crews	CO	31.38	BNSF/UPRR		BNSF/UPRR				16	0.0	5	5.3	3	3.8	24.0	9.1	10.6	-13.4
B-12	Crews	CO	Pueblo Jct	CO	36.12	BNSF/UPRR		BNSF/UPRR				16	0.0	5	5.3	2	2.5	23.0	7.8	9.1	-13.9
B-13	Pueblo Jct	CO	Walsenberg	CO	52.31	BNSF/UPRR		BNSF/UPRR				8	0.0	2	2.5			10.0	2.5	2.9	-7.1
B-14	Walsenberg	CO	West Trinidad	CO	40.75	BNSF/UPRR		BNSF/UPRR				8	0	2	2.5			10.0	2.5	2.9	-7.1
B-15	West Trinidad	CO	Raton	NM	22.66	BNSF	No	BNSF	No	2				1	1.3			3.0	1.3	1.5	-1.5
B-16	West Trinidad	CO	Branson	CO	50.43	BNSF	No	BNSF	No			8	0	2	2.5			10.0	2.5	2.9	-7.1
B-17	West Trinidad	CO	La Junta	CO	81.24	BNSF	No	BNSF	No	2				3	3.8			5.0	3.8	4.4	-0.6
B-18	Pueblo Jct	CO	NA Jct	CO	26.07	BNSF/UPRR		BNSF/UPRR				8	0	2	3	2	2.5	12.0	5.5	6.4	-5.6
B-19	NA Jct	CO	La Junta	CO	36.36	BNSF/UPRR	No	BNSF/UPRR	No			8	0	2	3	2	2.5	12.0	5.5	6.4	-5.6
B-20	La Junta	CO	Las Animas Jct	CO	21.70	BNSF/UPRR	No	BNSF/UPRR	No	2		8	0	2	3	1	1.3	13.0	4.3	5.0	-8.0
B-21	Las Animas Jct	CO	South Jct	CO	63.45	BNSF/UPRR	No	BNSF/UPRR	No			8	20.8	2	3			10.0	23.8	27.6	17.6
B-22	South Jct	CO	Boise City	OK	51.65	BNSF/UPRR	No	BNSF/UPRR	No			8	20.8	2	3			10.0	23.8	27.6	17.6
B-24	Las Animas Jct	CO	Coolidge	KS	64.74	BNSF/UPRR	No	BNSF/UPRR	No	2				2	2.5			4.0	2.5	2.9	-1.1
B-25	20th Street Jct	CO	Prospect Jct	CO	0.53	BNSF	No	BNSF	No			1	1.3	4	5.1	2	2.5	7.0	8.9	10.3	3.3
B-26	Prospect Jct	CO	Boulder	CO	26.64	BNSF	No	BNSF	No			1.0	1.3	2	2.5	1	1.3	4.0	5.1	5.9	1.9
B-27	Boulder	CO	Fort Collins	CO	44.11	BNSF	No	BNSF	No					2	2.5	1	1.3	3.0	3.8	4.4	1.4
B-28	Fort Collins	CO	Cheyenne	WY	45.37	BNSF	No	BNSF	No					2	2.5	1	1.3	3.0	3.8	4.4	1.4
B-30	C&S Jct	CO	Golden	CO	9.17	BNSF		BNSF						2	2.5	4	5.1	6.0	7.6	8.8	2.8
B-31	South Park Jct	CO	Arapahoe Power	CO	5.41	BNSF		BNSF				0.5	0.7	1	1.3			1.0	2.0	8.8	7.8
S-1	NA Jct	CO	Towner	CO	60.38	CKT	No	CKT	No												
S-2	Eaton	CO	Loveland	CO	25.27	GWR		GWR													
S-3	Officer Jct	CO	Longmont	CO	23.86	GWR		GWR													
S-4	Dent	CO	Welty	CO	11.09	GWR		GWR													
S-5	Walsenberg	CO	Alamosa Jct	CO	76.73	SLRG		SLRG													
S-6	Alamosa Jct	CO	Derrick	CO	69.98	SLRG		SLRG													
S-7	Alamosa Jct	CO	Antonito	CO	29.28	SLRG		SLRG													
S-8	Fort Collins	CO	Greeley	CO	23.70	GWRR		GWRR										0.0	0.0	0.0	0.0
S-9	South Jct	CO	Saunders	KS	32.50	CVR		CVR										0.0	0.0	0.0	0.0
S-10	Canon City	CO	Parkdale	CO	10.00	RCX		RCX													
N-1	Omar	CO	Peoria	CO	35.31	New	New	TBD	TBD				20.8		0.5			0	21.3	24.7	24.7
N-2	Aroya	CO	Las Aminos Jct	CO	54.51	New	New	TBD	TBD				20.8		0.5			0	21.3	24.7	24.7

Data provided by BNSF through 2015, consultant estimate to 2030.



public Benefits & Costs study

of the Proposed BNSF/UP Front Range Railroad Infrastructure Rationalization Project



Table 4.2.3 UPRR Master Train Counts - No-Build

		Year 1 2004	Year 2 2005	Year 3 2006	Year 4 2007	Year 5 2008	Year 6 2009	Year 7 2010	Year 8 2011	Year 9 2012	Year 10 2013	Year 11 2014	Year 12 2015	Year 27 2030
Annual Growth Rate	Consultant Segment ID		1.0%	1.0%	1.0%	1.0%	1.0%	1.0%	1.0%	1.0%	1.0%	1.0%	1.0%	See Note 1
Moffat Sub	U-13	14.7	17.7	17.9	18.1	18.3	18.5	18.7	18.8	19.0	19.2	19.4	19.6	22.8
Utah Jct to Belt Jct	N-4, U22	20.5	23.5	23.7	24.0	24.2	24.5	24.7	25.0	25.2	25.5	25.7	26.0	30.2
North Yard to Prospect Jct	U-12	11.5	11.7	11.8	11.9	12.0	12.1	12.2	12.4	12.5	12.6	12.7	12.9	14.9
Prospect to Colorado Springs	U-11,U-32 to U-34	6.3	6.3	6.4	6.4	6.5	6.6	6.6	6.7	6.8	6.8	6.9	7.0	8.1
Sand Creek to Greeley	U-6	14.1	15.0	15.1	15.3	15.4	15.6	15.8	15.9	16.1	16.2	16.4	16.6	19.2
New Line (Omar to Peoria)	N-1						0.0	0.0	0.0	0.0	0.0	0.0	0.0	0.0
New Line (Aroya to Las Animas)	N-2						0.0	0.0	0.0	0.0	0.0	0.0	0.0	0.0
MP4.0 to Pullman	U-9	17.0	19.3	19.5	19.7	19.9	20.1	20.3	20.5	20.7	20.9	21.1	21.3	24.7
Pullman to Sandown	U-41	6.4	8.6	8.7	8.8	8.9	9.0	9.1	9.2	9.2	9.3	9.4	9.5	11.1
South of Pullman	U-10	10.6	10.7	10.8	10.9	11.0	11.1	11.2	11.3	11.4	11.5	11.7	11.8	13.7
South of 36th St. Yard	U-10	1.5	1.5	1.5	1.5	1.5	1.6	1.6	1.6	1.6	1.6	1.6	1.7	1.9
Sandown to Belt Jct. (Old Rock Island Line)	N-3	0.0	0.0	0.0	0.0	0.0	0.0	0.0	0.0	0.0	0.0	0.0	0.0	0.0
Sandown to Watkins	U-25	6.4	8.6	8.7	8.8	8.9	9.0	9.1	9.2	9.2	9.3	9.4	9.5	11.1
Pueblo to Stratford	U-40	1.3	1.3	1.3	1.3	1.4	1.4	1.4	1.4	1.4	1.4	1.4	1.5	1.7
Pueblo to Dalhart	U-37, U-38	1.3	1.3	1.3	1.3	1.4	1.4	1.4	1.4	1.4	1.4	1.4	1.5	1.7

NOTES:

1. Estimated by consultant using 1% increase per year from UP's estimate of year 2015.
2. Union Pacific volumes only; does not include Amtrak or BNSF volumes.
3. Train counts do not include "Local" trains.
4. "TBD" means To Be Determined.
5. Assumes a fully operational Utah Junction in 2005 (Segment N-4 presently under construction).



public Benefits & Costs study

of the Proposed BNSF/UP Front Range Railroad Infrastructure Rationalization Project



Table 4.2.4 UPRR Master Train Counts - Build

		Year 1 2004	Year 2 2005	Year 3 2006	Year 4 2007	Year 5 2008	Year 6 2009	Year 7 2010	Year 8 2011	Year 9 2012	Year 10 2013	Year 11 2014	Year 12 2015	Year 27 2030
Annual Growth Rate	Consultant Segment ID		1.0%	1.0%	1.0%	1.0%	1.0%	1.0%	1.0%	1.0%	1.0%	1.0%	1.0%	See Note 1
Moffat Sub	U-13	14.7	17.7	17.9	18.1	18.3	18.5	18.7	18.8	19.0	19.2	19.4	19.6	22.8
Utah Jct to Belt Jct	N-4, U22	20.5	23.5	23.7	24.0	24.2	23.1	23.3	23.5	23.8	24.0	24.2	24.5	28.4
North Yard to Prospect Jct	U-12	11.5	11.7	11.8	11.9	12.0	4.0	4.1	4.1	4.2	4.2	4.2	4.3	5.0
Prospect to Colorado Springs	U-11,U32 to U-34	6.3	6.3	6.4	6.4	6.5	4.0	4.1	4.1	4.2	4.2	4.2	4.3	5.0
Sand Creek to Greeley	U-6	14.1	15.0	15.1	15.3	15.4	7.1	7.2	7.3	7.3	7.4	7.5	7.6	8.8
New Line (Omar to Peoria)	N-1						9.5	9.6	9.7	9.8	9.9	10.0	10.1	11.8
New Line (Aroya to Las Animas)	N-2						TBD	TBD	TBD	TBD	TBD	TBD	TBD	TBD
MP4.0 to Pullman	U-9	17.0	19.3	19.5	19.7	19.9	1.5	1.5	1.5	1.5	1.5	1.5	1.5	1.7
Pullman to Sandown	U-41	6.4	8.6	8.7	8.8	8.9	2.0	2.0	2.1	2.1	2.1	2.1	2.1	2.5
South of Pullman	U-10	10.6	10.7	10.8	10.9	11.0	1.5	1.5	1.5	1.5	1.5	1.5	1.5	1.7
South of 36th St. Yard	U-10	1.5	1.5	1.5	1.5	1.5	1.5	1.5	1.5	1.5	1.5	1.5	1.5	1.7
Sandown to Belt Jct. (Old Rock Island Line)	N-3	0.0	0.0	0.0	0.0	0.0	21.4	21.7	21.9	22.1	22.3	22.5	22.8	26.4
Sandown to Watkins	U-25	6.4	8.6	8.7	8.8	8.9	21.4	21.7	21.9	22.1	22.3	22.5	22.8	26.4
Pueblo to Stratford	U-40	1.3	1.3	1.3	1.3	1.4	1.4	1.4	1.4	1.4	1.4	1.4	1.5	1.7
Pueblo to Dalhart	U-37, U-38	1.3	1.3	1.3	1.3	1.4	1.4	1.4	1.4	1.4	1.4	1.4	1.5	1.7

NOTES:

1. Estimated by consultant using 1% increase per year from UP's estimate of year 2015.
2. Union Pacific volumes only; does not include Amtrak or BNSF volumes.
3. Assumes a fully operational Utah Junction in 2005 (Segment N-4 presently under construction).
4. Assumes Front-Range plan is completed in 2008 and operations begin in 2009.
5. Train counts do not include "Local" trains.
6. "TBD" means "To Be Determined".



public Benefits & Costs study

of the Proposed BNSF/UP Front Range Railroad Infrastructure Rationalization Project



Table 4.2.5 Existing BNSF Track Data - 2004

Segment Description					Ownership				Track Data						
Segment ID	Between		And	Segment Length (mi.)	2003	Trackage Rights?	2030	Trackage Rights?	Track Description (SMT, DMT)	Class	Train Movement Control	Number of Grade Crossings	Number of Rail Shippers (Heavy, Light, None)	Number of Industry Tracks	Number of Sen. Noise Rec.
	B-1	Sidney	NE		Sterling	CO	40.14	BNSF	No	BNSF	No	SMT	4		
B-2	Sterling	CO	Venango	NE	68.14	BNSF		BNSF		SMT	4				
B-3	Union	CO	Brush Center	CO	10.77	BNSF	No	BNSF	No	SMT	4				
B-4	Brush Center	CO	Sanborn	NE	88.58	BNSF		BNSF		SMT	4				
B-5	Brush Center	CO	Omar	CO	30.23	BNSF	No	BNSF	No	SMT	4				
B-6	Omar	CO	Hudson	CO	28.27	BNSF	No	BNSF	No	SMT	4				
B-7	Hudson	CO	Sand Creek Jct	CO	24.96	BNSF	No	BNSF	No	SMT	4				
B-8	Sand Creek Jct	CO	20th Street Jct	CO	4.48	BNSF	No	BNSF	No	SMT	3				
B-9	20th Street Jct	CO	South Park Jct	CO	2.73	BNSF/UPRR		BNSF/UPRR		DMT	4				
B-10	South Park Jct	CO	Palmer Lake	CO	48.77	BNSF/UPRR		BNSF/UPRR		DMT	4				
B-11	Palmer Lake	CO	Crews	CO	31.38	BNSF/UPRR		BNSF/UPRR		SMT	4				
B-12	Crews	CO	Pueblo Jct	CO	36.12	BNSF/UPRR		BNSF/UPRR		DMT	4				
B-13	Pueblo Jct	CO	Walsenberg	CO	52.31	BNSF/UPRR		BNSF/UPRR		DMT	4				
B-14	Walsenberg	CO	West Trinidad	CO	40.75	BNSF/UPRR		BNSF/UPRR		SMT	4				
B-15	West Trinidad	CO	Raton	NM	22.66	BNSF	No	BNSF	No	SMT	4				
B-16	West Trinidad	CO	Branson	CO	50.43	BNSF	No	BNSF	No	SMT	4				
B-17	West Trinidad	CO	La Junta	CO	81.24	BNSF	No	BNSF	No	SMT	4				
B-18	Pueblo Jct	CO	NA Jct	CO	26.07	BNSF/UPRR		BNSF/UPRR		SMT	4				
B-19	NA Jct	CO	La Junta	CO	36.36	BNSF/UPRR	No	BNSF/UPRR	No	SMT	4				
B-20	La Junta	CO	Las Animas Jct	CO	21.70	BNSF/UPRR	No	BNSF/UPRR	No	SMT	4				
B-21	Las Animas Jct	CO	South Jct	CO	63.45	BNSF/UPRR	No	BNSF/UPRR	No	SMT	4				
B-22	South Jct	CO	Boise City	OK	51.65	BNSF/UPRR	No	BNSF/UPRR	No	SMT	4				
B-23	South Jct	CO	Saunders	KS	32.50	CVR		CVR		SMT	4				
B-24	Las Animas Jct	CO	Coolidge	KS	64.74	BNSF/UPRR	No	BNSF/UPRR	No	SMT	4				
B-25	20th Street Jct	CO	Prospect Jct	CO	0.53	BNSF	No	BNSF	No	SMT	4				
B-26	Prospect Jct	CO	Boulder	CO	26.64	BNSF	No	BNSF	No	SMT	4				
B-27	Boulder	CO	Fort Collins	CO	44.11	BNSF	No	BNSF	No	SMT	4				
B-28	Fort Collins	CO	Cheyenne	WY	45.37	BNSF	No	BNSF	No	SMT	4				
B-29	Fort Collins	CO	Greeley	CO	23.70	GWRR		GWRR		SMT	1				
B-30	C&S Jct	CO	Golden	CO	9.17	BNSF		BNSF		SMT	2				
B-31	South Park Jct	CO	Arapahoe Power	CO	5.41	BNSF		BNSF		SMT	2				
N-1	Omar	CO	Peoria	CO	35.31	New	New	TBD	TBD	SMT	4				
N-2	Aroya	CO	Las Animas Jct	CO	54.51	New	New	TBD	TBD	SMT	4				

Some data intentionally left blank by the railroad.



public Benefits & Costs study

of the Proposed BNSF/UP Front Range Railroad Infrastructure Rationalization Project



Table 4.2.6 Existing BNSF Train Data - 2004

Train Type	Route (Map Ref No.)	Origin	Destination	Segment ID	Cargo	Typical Number of Cars	Typical Train Length	Trains/day (TPD)	Annual Ton-miles	Typical Train Speeds	Typical Number of Locomotives per Train	Work on Line?	Annual Riders (passenger trains only)
Freight		Sterling	Denver		Coal load	125	6904	7.0	5,118,546,000	50	4		
Freight		Denver	Sterling		Coal empty	125	6898	7.0	1,019,971,000	50	4		
Freight		Denver	Pueblo		Coal load	125	68916	7.0	4,953,337,000	50	4		
Freight		Pueblo	Denver		Coal empty	125	6898	7.0	994,394,000	50	4		
Freight		Pueblo	Amarillo		Coal load	124	6836	6.0	11,621,202,000	45	4		
Freight		Amarillo	Denver		Coal empty	124	6827	6.0	2,237,530,000	45	4		
Freight		McCook	Denver		Grain load	103	6355	6.0	357,352,000	50	3		
Freight		Denver	McCook		Grain empty	96	5831	0.5	83,409,000	50	2		
Freight		Denver	Pueblo		Grain load	92	5377	0.5	279,258,000	50	3		
Freight		Pueblo	Denver		Grain empty	97	5604	0.5	70,894,000	50	2		
Freight		Pueblo	Amarillo		Grain load	92	5416	0.5	714,537,000	45	3		
Freight		Amarillo	Pueblo		Grain empty	89	4882	0.5	104,792,000	45	2		
Manifest		McCook	Denver		manifest	76	4585	2.0	1,052,283,000	50	2		
Manifest		Denver	McCook		manifest	90	5546	1.5	840,614,000	50	2		
Manifest		Sterling	Denver		manifest	54	3064	0.5	74,710,000	50	2		
Manifest		Denver	Sterling		manifest	71	4656	0.5	69,475,000	50	3		
Manifest		Denver	Pueblo		manifest	61	3833	2.0	517,354,000	50	3		
Manifest		Pueblo	Denver		manifest	68	4292	2.0	309,204,000	50	3		
Manifest		Pueblo	Amarillo		manifest	72	4474	1.0	812,065,000	45	2		
Manifest		Amarillo	Pueblo		manifest	89	4882	1.0	404,479,000	45	2		
Manifest		Denver	Cheyenne		manifest	70	5069	1.0	149,440,000	45	3		
Manifest		Cheyenne	Denver		manifest	69	4672	1.0	285,582,000	45	3		
Intermodal		McCook	Denver		Containers	55	4763	2.0	651,801,000	50	2		
Intermodal		Denver	McCook		Containers	53	4595	1.5	546,725,000	50	2		
Intermodal		Denver	Pueblo		Containers	55	5061	0.5	51,633,000	50	2		
Intermodal		Pueblo	Denver		Containers	64	6026	0.1	4,861,000	50	2		
Intermodal		Pueblo	Amarillo		Containers	53	4900	0.5	118,770,000	45	2		
Intermodal		Amarillo	Pueblo		Containers	66	6233	0.1	8,821,000	45	2		
Passenger		McCook	Denver		passenger	no consist data							
Passenger		Denver	McCook		passenger	no consist data							
Commuter													

Some data intentionally left blank by the railroad.



public Benefits & Costs study

of the Proposed BNSF/UP Front Range Railroad Infrastructure Rationalization Project



Table 4.2.7 Existing UPRR Track Data - 2004

Segment ID	Between	And	Segment Length (mi.)	2003	Trackage Rights?	2030	Trackage Rights?	Track Description (SMT, DMT)	Class	Train Movement Control	Number of Grade Crossings	Number of Rail Shippers (Heavy, Light, None)	Number of Industry Tracks	Number of Sen. Noise Rec.
U-1	Julesberg	CO Sterling	CO	57.01	UPRR	No	UPRR	No	SMT			Light		None
U-2	Sterling	CO Union	CO	23.99	UPRR	BNSF	UPRR	BNSF	SMT	BNSF		None		None
U-3	Speer	WY LaSalle	CO	51.38	UPRR	No	UPRR	No	SMT	4	CTC	Heavy	Heavy	None
	Union	CO LaSalle	CO	69.65	UPRR			Out of Service	Out Of Service	Out of Service		None	Out of Service	None
U-4	LaSalle	CO Dent	CO		UPRR	No	UPRR	No	SMT	2	YL	Light	Light	None
	Dent	CO Fort Collins	CO		UPRR	No	UPRR	No	SMT	2	TWC	Light	Light	None
	Fort Collins	CO Boettcher	CO		UPRR	No	UPRR	No	SMT	2	YL	Light	Light	None
U-6	LaSalle	CO Sand Creek Jct	CO	42.09	UPRR	No	UPRR	No	SMT	4	CTC	Heavy	Heavy	None
U-7	Sand Creek Jct	CO DRI Jct	CO	1.54	UPRR	No	UPRR	No	SMT	4	YL / 2MT	None	Heavy	None
U-8	DRI Jct	CO DRGW Jct	CO	0.77	UPRR	No	UPRR	No	SMT	2	YL	None	None	None
U-9	DRGW Jct	CO Pullman Jct	CO	1.3	UPRR	No	UPRR	No	SMT	2	YL	Light	Heavy	None
U-24	Belt Jct	CO Sandown	CO	3.85	DRI	No	UPRR	No	SMT	2	YL	Heavy	Heavy	None
U-25	Sandown	CO Sable	CO		UPRR	No	UPRR	No	SMT	2	TWC	Heavy	Heavy	None
U-26	Sable	CO Aroya	CO		UPRR	No	UPRR	BNSF	SMT	4	TWC	Heavy	Heavy	None
U-27	Aroya	CO Sharon Springs	KS	77.55	UPRR	No	UPRR	No	SMT	4	TWC	Light	Light	None
U-32	Denver	CO Burnham	CO		UPRR/BNSF	No	UPRR/BNSF	No	DMT	4	CTC	Light	Moderate	None
U-33	Burnham	CO Littleton	CO		UPRR/BNSF	No	UPRR/BNSF	No	DMT	4	CTC	Light	Moderate	None
U-33	Littleton	CO Blakeland	CO		UPRR/BNSF	No	UPRR/BNSF	No	2MT (Directional)	4	CTC	Light	Moderate	None
U-34	Blakeland	CO Palmer Lake	CO		UPRR/BNSF	No	UPRR/BNSF	No	2MT (Directional)	4	CTC	Light	Light	None
U-34	Palmer Lake	CO Colorado Springs	CO		UPRR/BNSF	No	UPRR/BNSF	No	SMT	4	CTC	Heavy	Heavy	None
U-35	Colorado Springs	CO Bragdon	CO	32.95	UPRR/BNSF	No	UPRR/BNSF	No	2MT (Directional)	4	CTC	Heavy	Heavy	None
U-36	Bragdon	CO Pueblo	CO	9.99	UPRR/BNSF	No	UPRR/BNSF	No	2MT (Directional)	4	CTC	Light	Light	None
U-37	Pueblo	CO Walsenburg	CO	52.31	UPRR/BNSF	No	UPRR/BNSF	No	2MT (Directional)	3	YL / 2MT	None	Light	None
U-38	Walsenburg	CO Trinidad	CO	40.75	UPRR/BNSF	No	UPRR/BNSF	No	SMT	BNSF	CTC	None	BNSF	None
U-39	Pueblo	CO NA Jct	CO	26.07	UPRR/BNSF	No	UPRR/BNSF	No	SMT	4	BNSF	Light	Light	None
U-40	NA Jct	CO La Junta	CO	36.36	BNSF	UPRR	BNSF	UPRR	SMT	BNSF	BNSF	None	BNSF	None
S-1	NA Jct	CO Towner	CO	60.38	CKP	No	CKP	No	SMT	1	CKP	Light		None
S-2	Eaton	CO Loveland	CO	25.27	GWR	No			SMT	GWR	GWR	GWR		None
S-3	Officer Jct	CO Longmont	CO	23.86	GWR	No			SMT	GWR	GWR	GWR		None
S-4	Dent	CO Welty	CO	11.09		No			SMT	GWR		GWR		None
S-5	Walsenburg	CO Alamosa Jct	CO	76.73	SLRG	No	SLRG	No	SMT	SLRG	SLRG	SLRG		None
S-6	Alamosa Jct	CO Derrick	CO	69.98	SLRG	No	SLRG	No	SMT	SLRG	SLRG	SLRG		None
S-7	Alamosa Jct	CO Antonito	CO	29.28	SLRG	No	SLRG	No	SMT	SLRG	SLRG	SLRG		None
N-1	Omar	CO Peoria	CO	35.31	New	New	TBD	TBD	SMT			New		None
N-2	Aroya	CO Las Aminas Jct	CO	54.51	New	New	TBD	TBD	SMT			New		None

Some data intentionally left blank by the railroad.



public Benefits & Costs study

of the Proposed BNSF/UP Front Range Railroad Infrastructure Rationalization Project



Table 4.2.8 Existing UPRR Train Data - 2004

Train Type	Route (Map Ref No.)	Origin	Destination	Segment ID	Typical Number of Cars	Typical Train Length	Trains/day (TPD)	Annual Ton-miles	Typical Train Speeds	Typical Number of Locomotives per Train	Annual Fuel usage (gal)	Work on Line (Yes or No)	Annual Riders (passenger trains only)
Manifest		Denver	Cheyenne		80-90	7500' max							
Manifest		Denver	Pueblo		75	6900' (tonnage restriction)							
Manifest		Denver	Salina		80	9000'							
Intermodal		Denver	Cheyenne		105	7500' max							
Automotive		Denver	Cheyenne		80	7500' max							
Local		Denver	Mesa		Various	6000'							
Local		Denver	Cheyenne		Various	7500' max							
Local		Denver	Sedalia		Various	6900' max							
Passenger		Denver	Grand Junction		AMTRAK SKI TRAIN								
Commuter					NONE								
Coal		Craig or Grand Jct.	Denver		105		225 per year						
Coal		Craig or Grand Jct.	Pueblo / South		105		352 per year						
Coal		Craig or Grand Jct.	Greeley / North		105		329 per year						
Coal		Craig or Grand Jct.	Limon / East		105		1,199 per year						
Coal		Denver	Craig or Grand Jct.		105		225 per year						
Coal		Pueblo / South	Craig or Grand Jct.		105		352 per year						
Coal		Greeley / North	Craig or Grand Jct.		105		329 per year						
Coal		Limon / East	Craig or Grand Jct.		105		1,199 per year						
Coal		Cheyenne, WY	Co. Springs		120		84 per year						
Coal		Co. Springs	Cheyenne, WY		120		84 per year						
Coal		Cheyenne, WY	Pueblo / South		120		24 per year in 2004						
Coal		Pueblo / South	Cheyenne, WY		120		24 per year in 2004						

NOTE: Does not include 466 empties and 56 loads to / from Colorado that moved via Salt Lake rather than Denver

NOTE: Does not include 13 "Test" or 169 "Grocery" coal trains from CO mines

Some data intentionally left blank by the railroad.

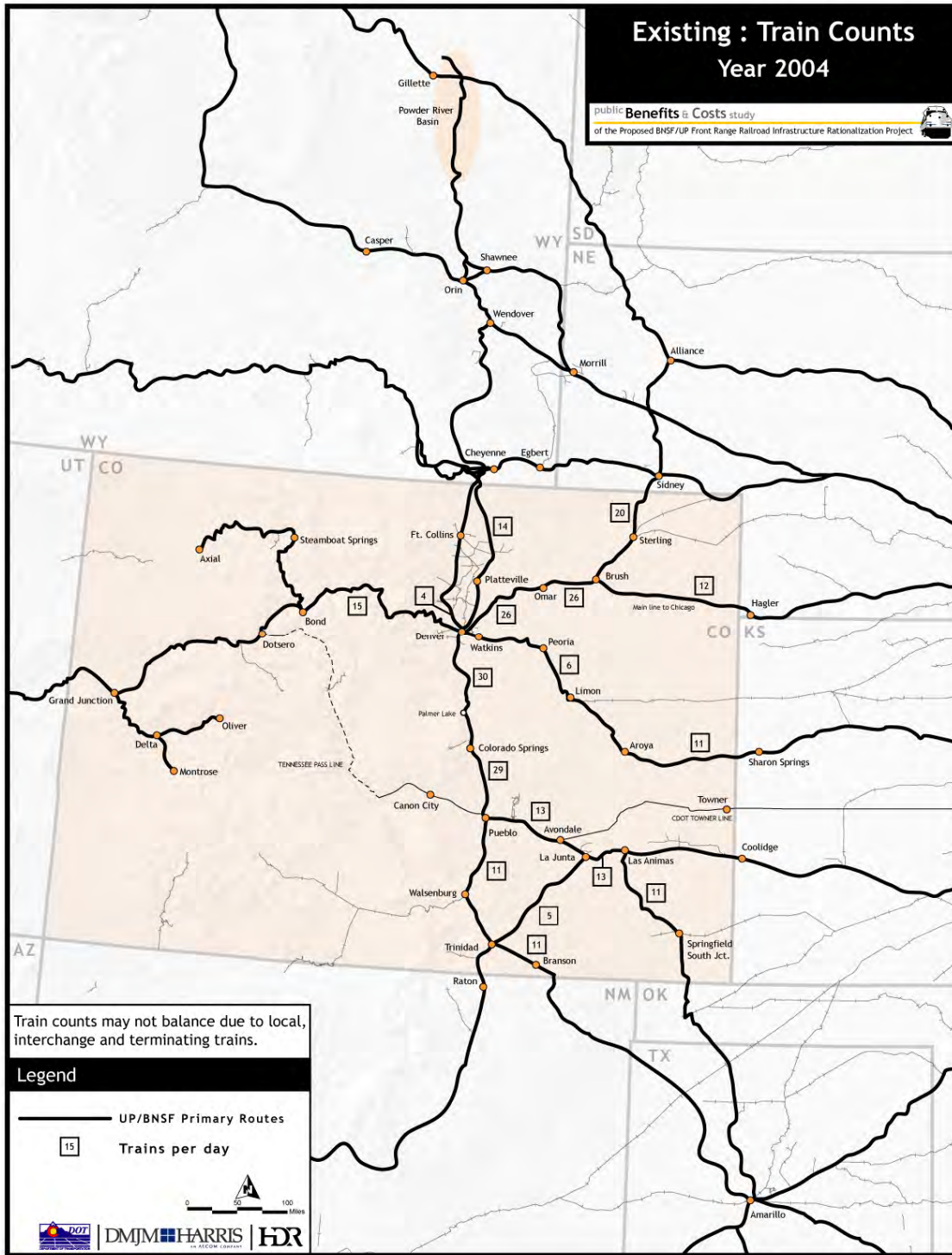


public Benefits & Costs study

of the Proposed BNSF/UP Front Range Railroad Infrastructure Rationalization Project



Figure 4.2.1 Existing Train Counts - Year 2004 - State

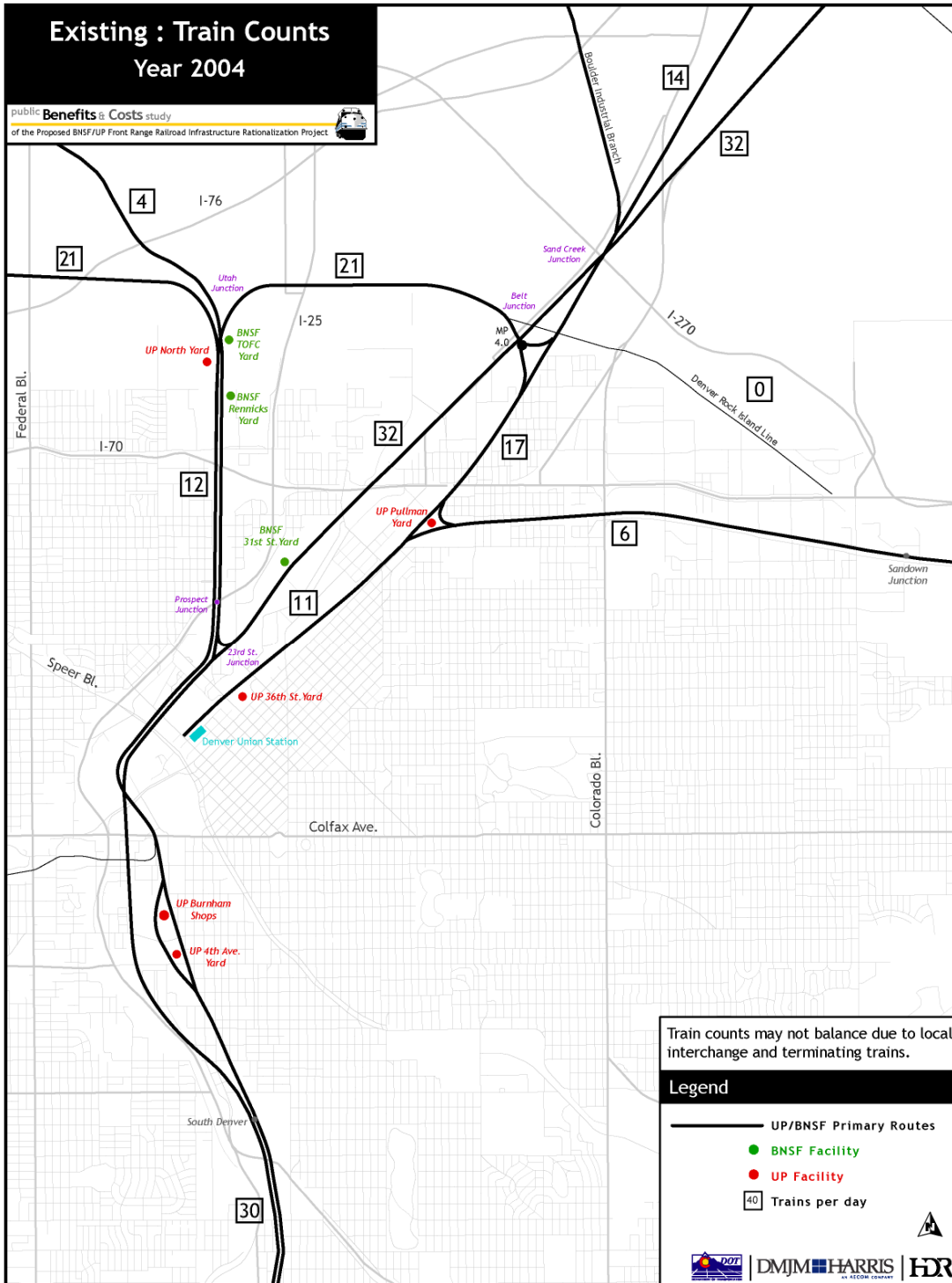


public Benefits & Costs study

of the Proposed BNSF/UP Front Range Railroad Infrastructure Rationalization Project



Figure 4.2.2 Existing Train Counts - Year 2004 - Denver

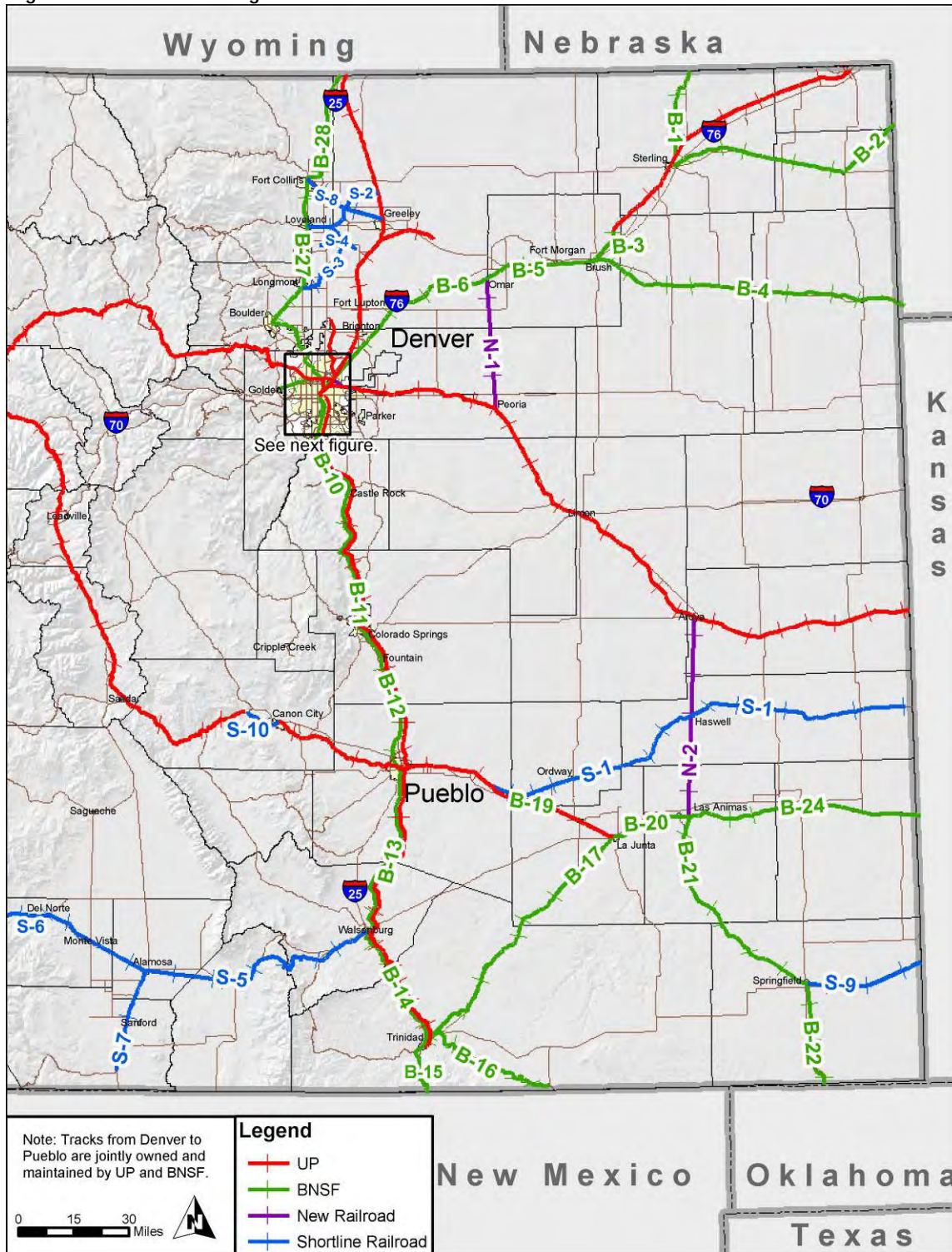


public Benefits & Costs study

of the Proposed BNSF/UP Front Range Railroad Infrastructure Rationalization Project



Figure 4.2.3 BNSF Segment Id's - State

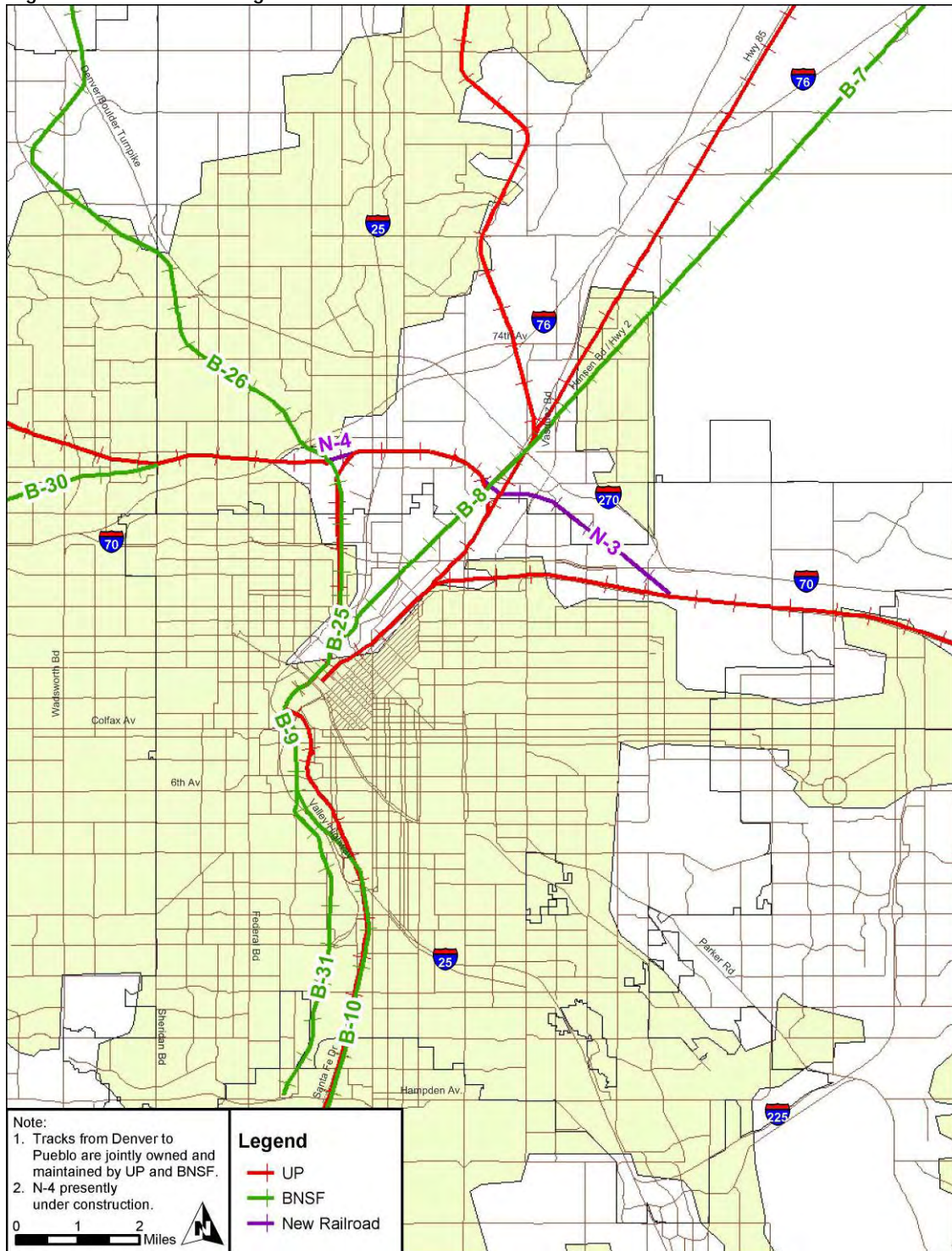


public Benefits & Costs study

of the Proposed BNSF/UP Front Range Railroad Infrastructure Rationalization Project



Figure 4.2.4 BNSF Segment Id's - Denver

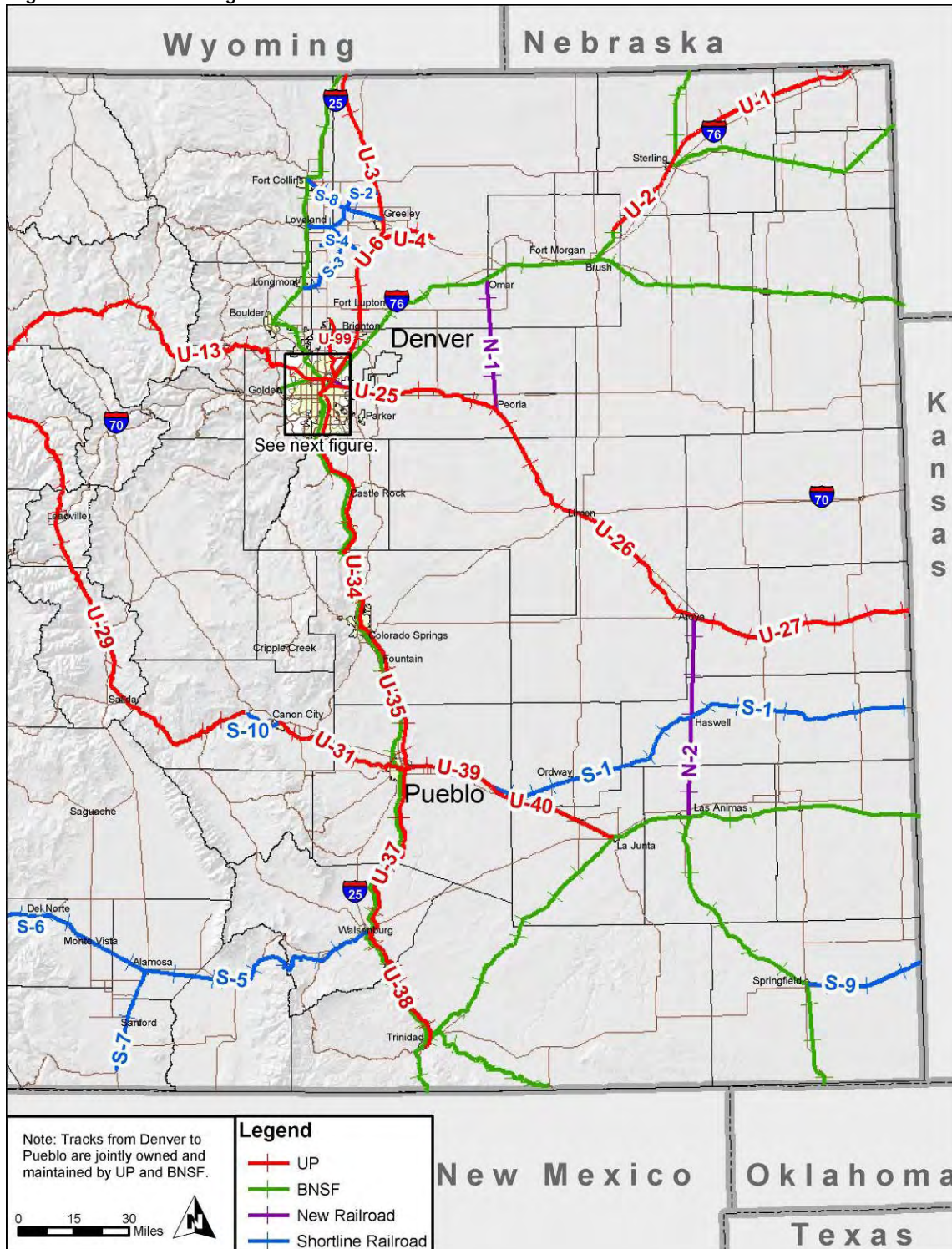


public Benefits & Costs study

of the Proposed BNSF/UP Front Range Railroad Infrastructure Rationalization Project



Figure 4.2.5 UP Segment Id's - State



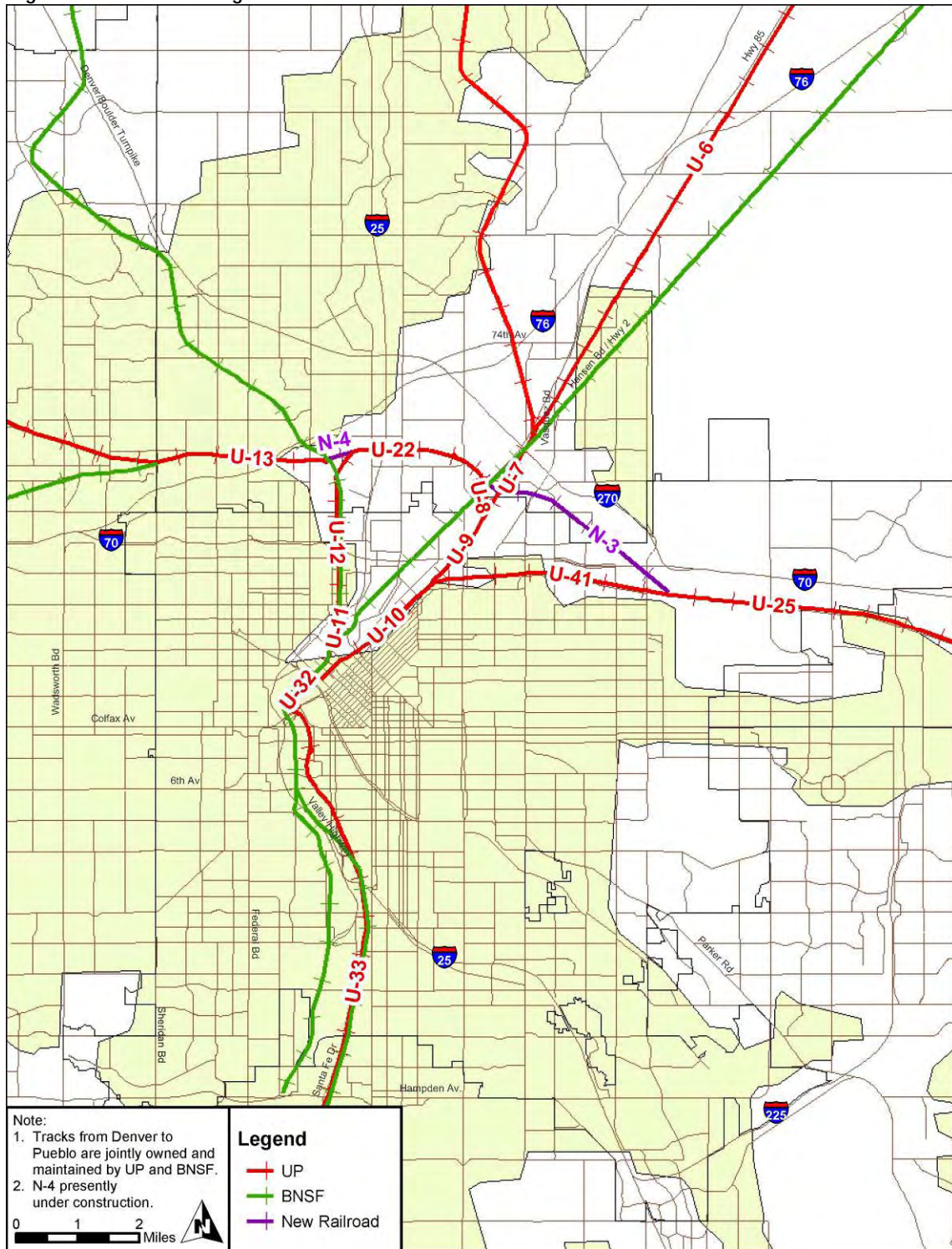
May 18, 2005

public Benefits & Costs study

of the Proposed BNSF/UP Front Range Railroad Infrastructure Rationalization Project



Figure 4.2.6 UP Segment Id's - Denver

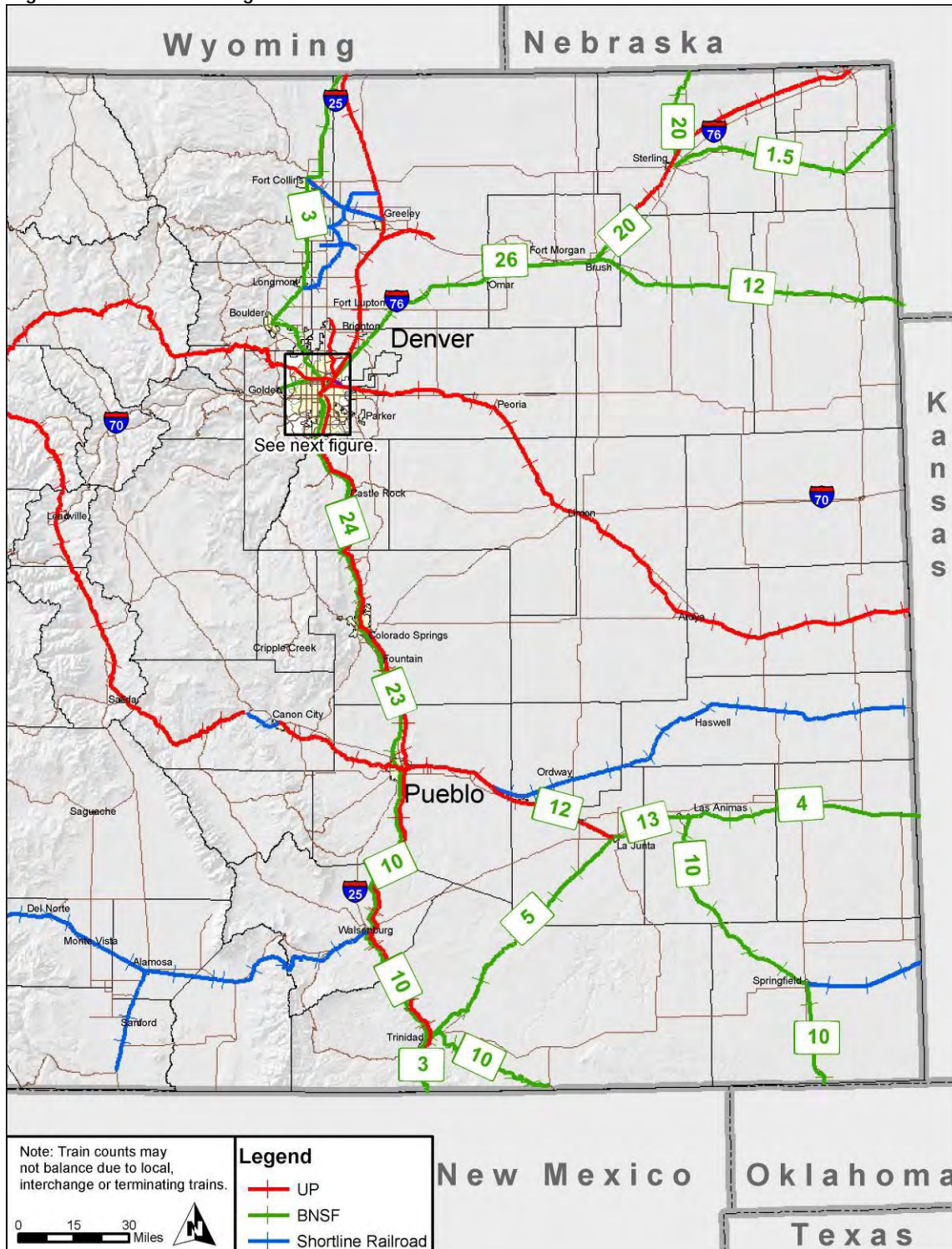


public Benefits & Costs study

of the Proposed BNSF/UP Front Range Railroad Infrastructure Rationalization Project



Figure 4.2.7 Existing Train Volumes - 2004 - BNSF - State

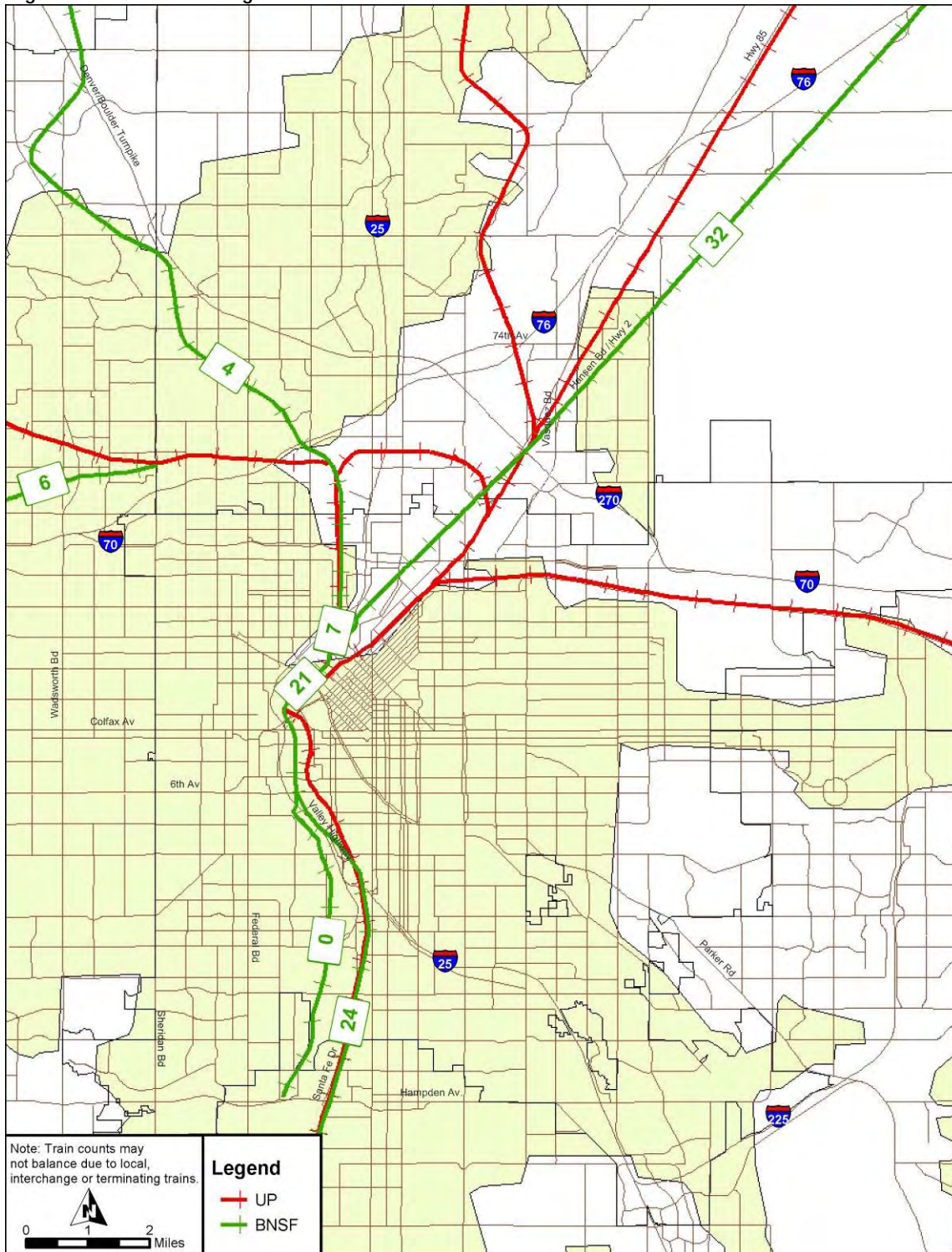


public Benefits & Costs study

of the Proposed BNSF/UP Front Range Railroad Infrastructure Rationalization Project



Figure 4.2.8 Existing Train Volumes - 2004 - BNSF - Denver



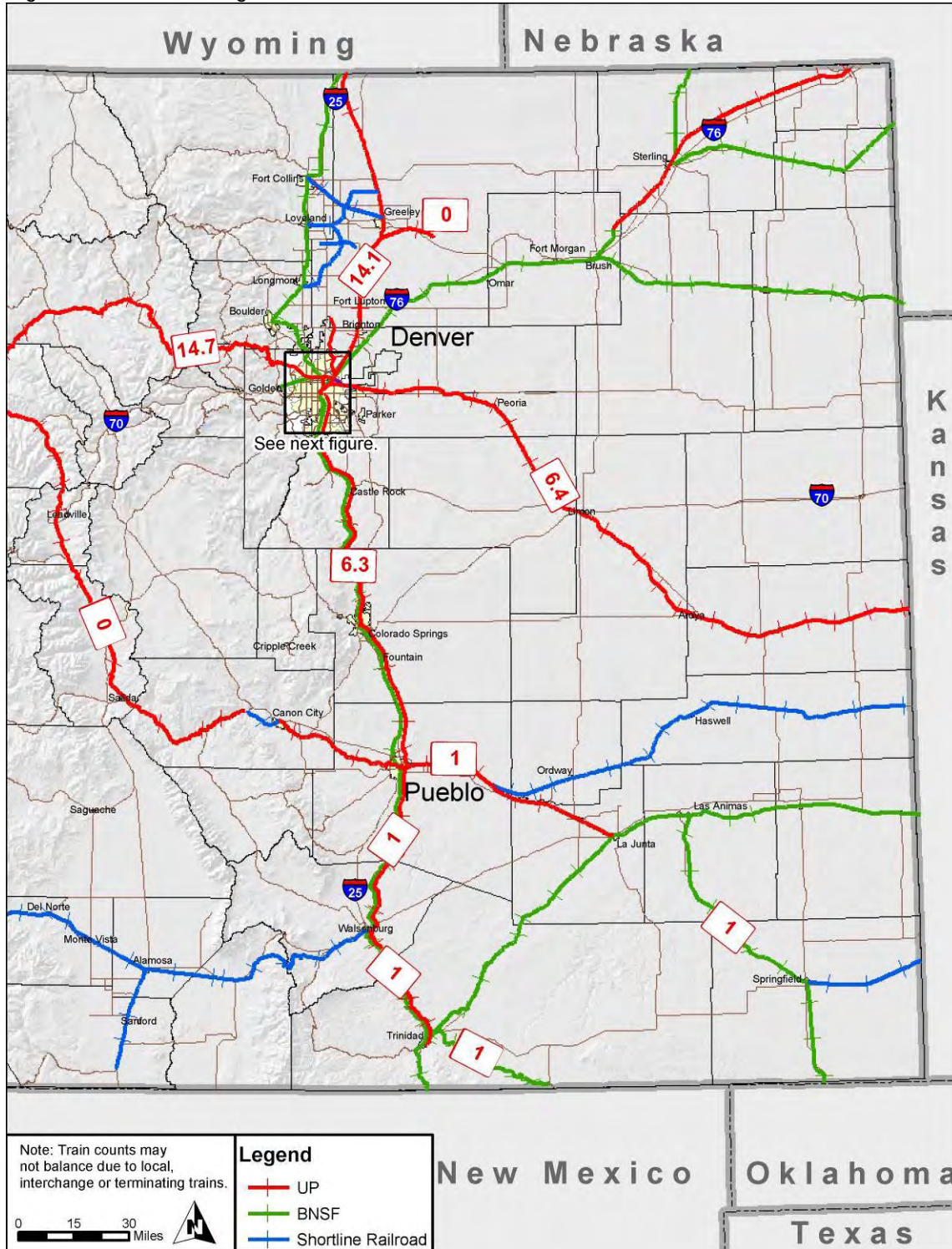
May 18, 2005

public Benefits & Costs study

of the Proposed BNSF/UP Front Range Railroad Infrastructure Rationalization Project



Figure 4.2.9 Existing Train Volumes - 2004 - UP - State

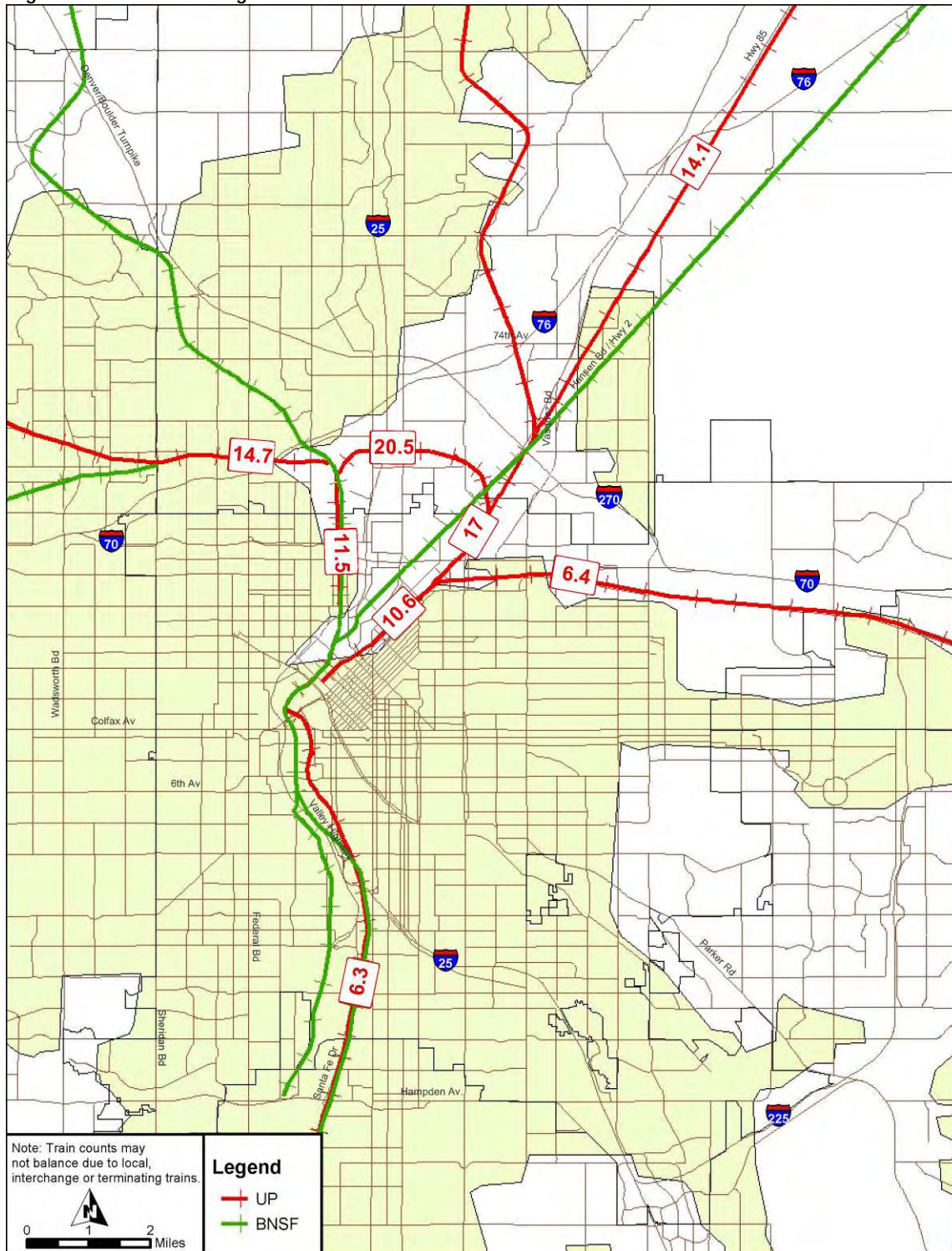


public Benefits & Costs study

of the Proposed BNSF/UP Front Range Railroad Infrastructure Rationalization Project



Figure 4.2.10 Existing Train Volumes - 2004 - UP - Denver



public **Benefits & Costs** study

of the Proposed BNSF/UP Front Range Railroad Infrastructure Rationalization Project



Table 4.2.9 Existing BNSF Yard Data - 2004

Yard Name	Yard Location	Yard Type	Size (Acre)	Trains/day	Redevelopment Potential	Lift Capacity	Annual Lifts	Container Capacity	Containers per day
Globeville			1000						
Rennick			117						
TOFC			55						

Some data intentionally left blank by the railroad.

public Benefits & Costs study

of the Proposed BNSF/UP Front Range Railroad Infrastructure Rationalization Project



Table 4.2.10 Existing UPRR Yard Data - 2004

Yard Name	Yard Location	Yard Type	Size (Acre)	Trains/day	Redevelopment Potential	Lift Capacity	Annual Lifts	Container Capacity	Containers per day
40th & 40th	40th Street & 40th	Intermodal	68	5	Yes	125,000	88,450	No Storage	246 (Based on 360 Days / Yr)
North Yard	901 W. 48th Avenue	Flat Switch		25	No				
36th	Wazee	Flat Switch	30	10	Yes				
Monaco	Smith Road & Monoco	Flat Switch		2 Locals	No				
Roydale	Smith Road & Peoria	Flat Switch		3 Locals	No				
Sandcreek	52nd Avenue	Flat Switch		1 Local	No				
Rolla	96th Avenue & Hwy 85	Ind Support	119.7	3 Locals / MainLine set	Yes				
La Salle	201 Union Street	Flat Switch		4 Locals / MainLine set	No				
Greeley	Greeley	Yard Tracks		1 Local	No				
Burnham	800 Seminole Rd	Flat Switch	60	1 Local/Switch	Yes				
Colorado Springs	Bijou	Flat Switch		2 Locals / MainLine set	Yes				
Pueblo	400 W. "B" Street	Flat Switch			No				

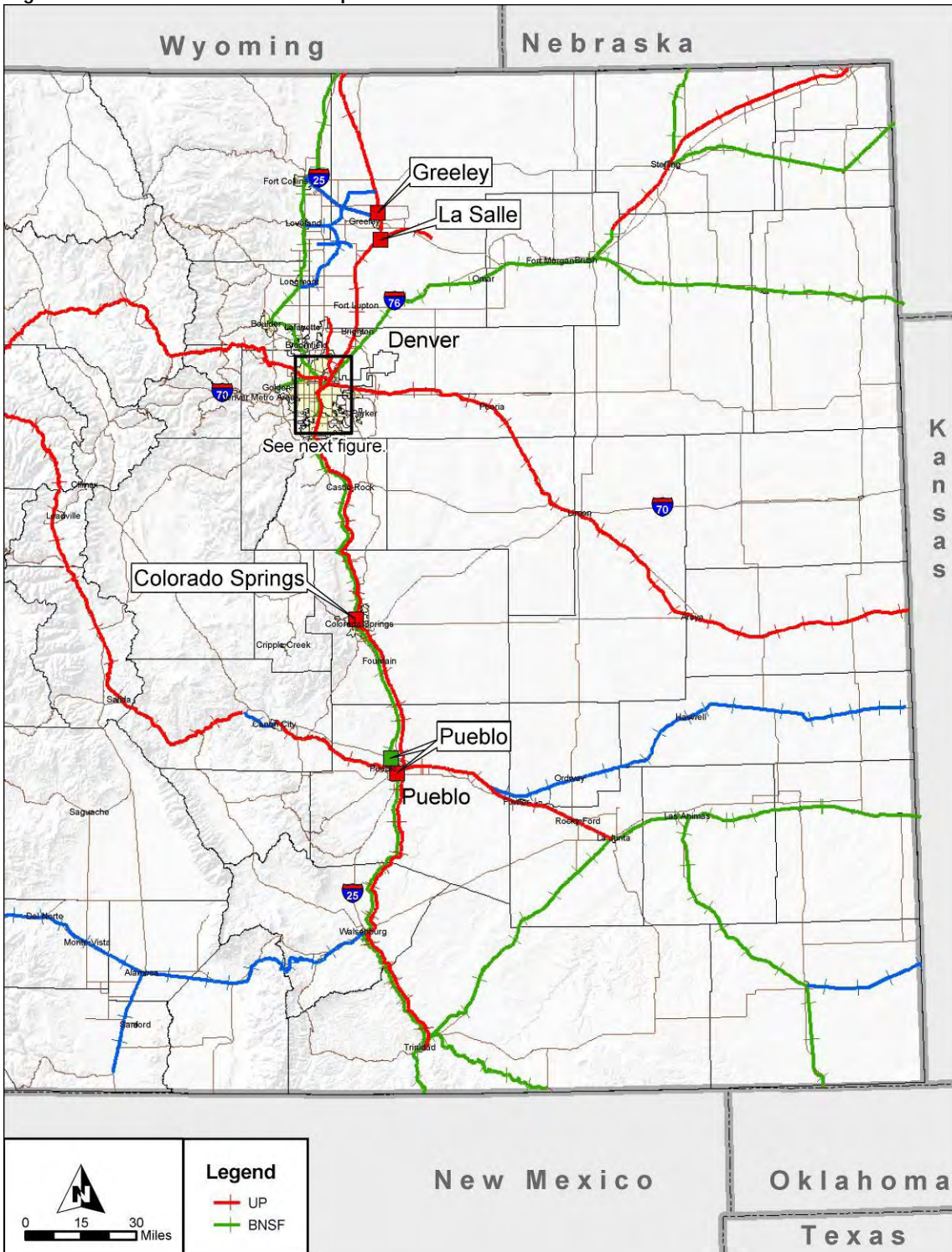
Some data intentionally left blank by the railroad.

public Benefits & Costs study

of the Proposed BNSF/UP Front Range Railroad Infrastructure Rationalization Project



Figure 4.2.11 Railroad Yard Map - 2004 - State



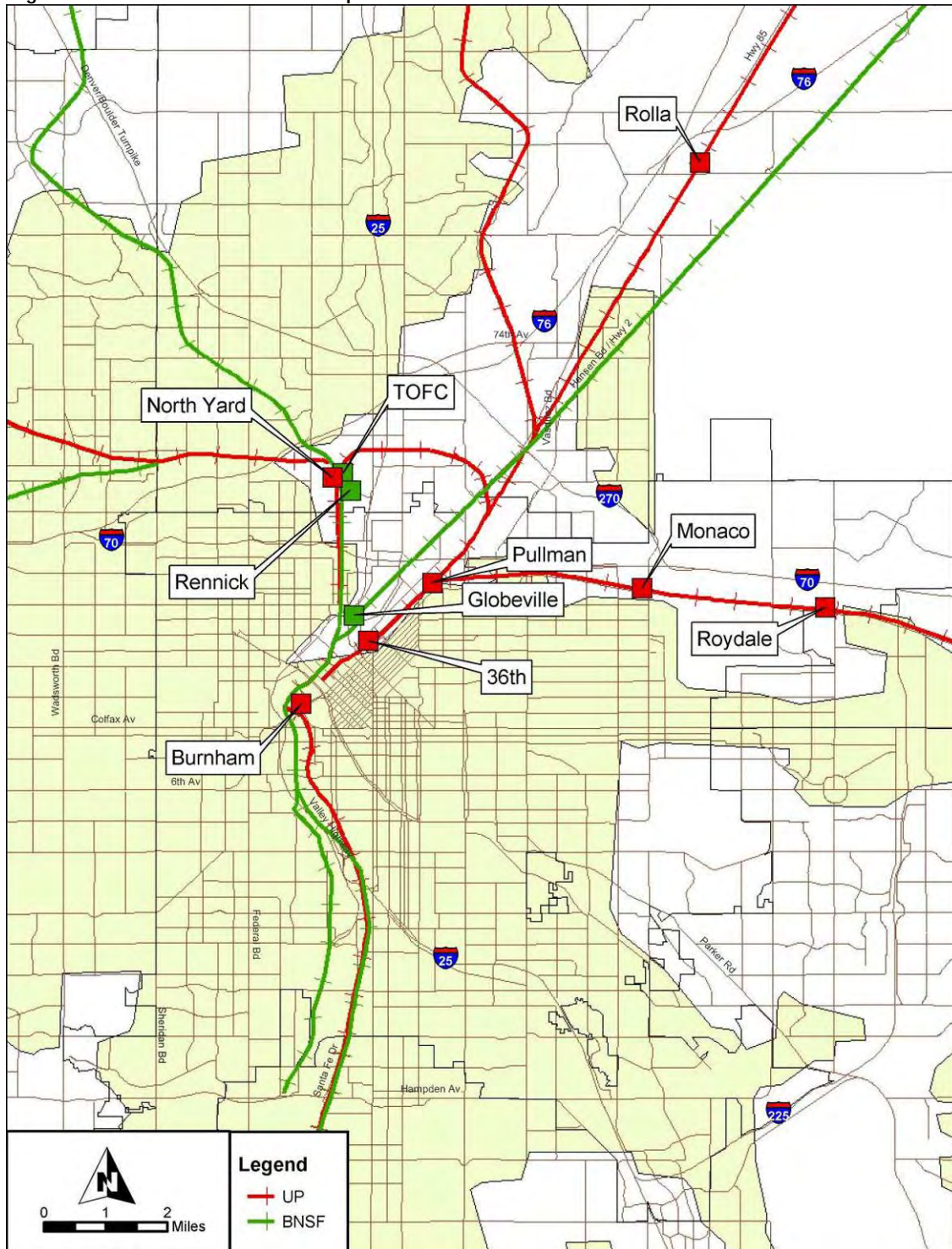
May 18, 2005

public Benefits & Costs study

of the Proposed BNSF/UP Front Range Railroad Infrastructure Rationalization Project



Figure 4.2.12 Railroad Yard Map - 2004 - Denver



public Benefits & Costs study

of the Proposed BNSF/UP Front Range Railroad Infrastructure Rationalization Project



Table 4.2.11 Existing At-grade Crossings
South of Denver along US 85 to Castle Rock and I-25 to New Mexico State Line (Branson)

Xing ID	RR	RR Division	RR Subdivision	Highway	Street	Branch	MP	TPD 2004	Max. TT Speed	Min. Speed	Max Speed	# of Lanes	AADT 2004	County	City
003621F	BNSF	POWDER RIVER	PIKES PEAK		TITAN RD	20TH ST-PUEBLO	001879	17	45	1	45	2	2240	DOUGLAS	LOUVIERS
003616J	BNSF	POWDER RIVER	PIKES PEAK	CR 16	CO RD 16	20TH ST-PUEBLO	002095	17	45	1	45	2	140	DOUGLAS	LOUVIERS
003615C	BNSF	POWDER RIVER	PIKES PEAK		AIRPORT RD	20TH ST-PUEBLO	002173	17	45	1	45	1	350	DOUGLAS	LOUVIERS
003612G	BNSF	POWDER RIVER	PIKES PEAK	FAS 67	MANHARDT ST	20TH ST-PUEBLO	002457	17	45	1	45	2	7089	DOUGLAS	SEDALIA
003598N	BNSF	POWDER RIVER	PIKES PEAK		TERRITORIAL RD	20TH ST-PUEBLO	003445	17	45	1	45	2	14	DOUGLAS	CASTLE ROCK
003593E	BNSF	POWDER RIVER	PIKES PEAK		TOMAH ROAD	20TH ST-PUEBLO	003794	17	45	1	45	2	14	DOUGLAS	LARKSPUR
003590J	BNSF	POWDER RIVER	PIKES PEAK		LARKSPUR RD	20TH ST-PUEBLO	004194	17	40	1	40	2	7	DOUGLAS	LARKSPUR
003586U	BNSF	POWDER RIVER	PIKES PEAK	CR 74	CO RD 74	20TH ST-PUEBLO	004629	17	35	1	35	2	28	DOUGLAS	PALMER LAKE
003528Y	BNSF	POWDER RIVER	PIKES PEAK	FAU2225	MAIN ST	20TH ST-PUEBLO	008278	34	55	1	55	4	14994	EL PASO	SECURITY
003527S	BNSF	POWDER RIVER	PIKES PEAK	FAU2910	FONTAINE BLVD	20TH ST-PUEBLO	008402	34	55	1	55	4	16091	EL PASO	FOUNTAIN
003525D	BNSF	POWDER RIVER	PIKES PEAK		MESA RD	20TH ST-PUEBLO	008575	17	45	1	45	2	11580	EL PASO	FOUNTAIN
003524W	BNSF	POWDER RIVER	PIKES PEAK	FAU2929	COMANCHE VILLAGE	20TH ST-PUEBLO	008714	17	55	1	55	4	10727	EL PASO	FOUNTAIN
003523P	BNSF	POWDER RIVER	PIKES PEAK	FAU2926	OHIO ST	20TH ST-PUEBLO	008808	17	55	1	55	2	14994	EL PASO	FOUNTAIN
003515X	BNSF	POWDER RIVER	PIKES PEAK		OLD PUEBLO RD	20TH ST-PUEBLO	009540	16	55	1	55	2	41	EL PASO	FOUNTAIN
003514R	BNSF	POWDER RIVER	PIKES PEAK	NFA 25	WIGWAM RD	20TH ST-PUEBLO	009782	17	55	1	55	1	7	EL PASO	FOUNTAIN
003513J	BNSF	POWDER RIVER	PIKES PEAK	CR 100	CO RD 100	20TH ST-PUEBLO	010016	17	55	1	55	1	14	PUEBLO	FOUNTAIN
003512C	BNSF	POWDER RIVER	PIKES PEAK	CR 102	TOTTON RD	20TH ST-PUEBLO	010122	17	55	1	55	1	28	PUEBLO	FOUNTAIN
003508M	BNSF	POWDER RIVER	PIKES PEAK	CR 104	CO RD 104	20TH ST-PUEBLO	010462	17	55	1	55	2	14	PUEBLO	PUEBLO
003507F	BNSF	POWDER RIVER	PIKES PEAK	CR 108	CO RD 108	20TH ST-PUEBLO	010538	17	55	1	55	1	14	PUEBLO	PUEBLO
003505S	BNSF	POWDER RIVER	PIKES PEAK	CR 110	CO RD 110	20TH ST-PUEBLO	010638	17	55	1	55	1	14	PUEBLO	PUEBLO
003476J	BNSF	POWDER RIVER	PIKES PEAK		CLARENCE ST	20TH ST-PUEBLO	012025	17	10	1	10	2	70	PUEBLO	PUEBLO
245077R	BNSF	POWDER RIVER	SPANISH PEAKS	CR 302	COUNTY RD	PUEBLO-TRINIDAD	012783	22	49	1	49	2	175	PUEBLO	PUEBLO
245088D	BNSF	POWDER RIVER	SPANISH PEAKS		RUSSELL ST	PUEBLO-TRINIDAD	017152	22	49	1	49	2	1211	HUERFANO	WALSENBERG
245089K	BNSF	POWDER RIVER	SPANISH PEAKS	FAP 925	MAIN ST	PUEBLO-TRINIDAD	017162	21	49	1	49	2	10369	HUERFANO	WALSENBERG
245091L	BNSF	AMARILLO	SPAISH PEAKS		5TH EO HENDREN	MAIN	017179	24	20	1	20	2	673	HUERFANO	WALSENBERG
245090E	BNSF	POWDER RIVER	SPANISH PEAKS		HENDREN ST	PUEBLO-TRINIDAD	017184	22	49	1	49	2	1346	HUERFANO	WALSENBERG
245092T	BNSF	POWDER RIVER	SPANISH PEAKS		6TH ST	PUEBLO-TRINIDAD	017191	22	49	1	49	2	269	HUERFANO	WALSENBERG
245093A	BNSF	POWDER RIVER	SPANISH PEAKS	FAP 160	7TH ST	PUEBLO-TRINIDAD	017204	22	49	1	49	4	8319	HUERFANO	WALSENBERG
244660L	BNSF	POWDER RIVER	SPANISH PEAKS	CR 310	ROUSE RD	PUEBLO-TRINIDAD	018262	22	35	1	35	2	121	HUERFANO	PRYOR
244657D	BNSF	POWDER RIVER	SPANISH PEAKS		AGUILAR RD	PUEBLO-TRINIDAD	018730	22	35	1	35	2	67	LAS ANIMAS	AGUILAR
244656W	BNSF	POWDER RIVER	SPANISH PEAKS	NFA 25	I-25 SPUR	PUEBLO-TRINIDAD	019056	22	45	1	45	2	1875	LAS ANIMAS	AGUILAR
245198N	BNSF	POWDER RIVER	SPANISH PEAKS		CO RD	PUEBLO-TRINIDAD	019753	22	45	1	45	2	94	LAS ANIMAS	AGUILAR
245188H	BNSF	POWDER RIVER	TWIN PEAKS	CO 239	SH CO 239	TEXLIN-TRINIDAD	021046	17	35	1	35	2	808	LAS ANIMAS	TRINIDAD
245187B	BNSF	POWDER RIVER	TWIN PEAKS		GODDARD EO I25	TEXLIN-TRINIDAD	021117	17	35	1	35	2	269	LAS ANIMAS	TRINIDAD
245153G	BNSF	POWDER RIVER	TWIN PEAKS		TRNDAD NEO CR	TEXLIN-TRINIDAD	021587	17	35	1	35	2	13	LAS ANIMAS	TRINIDAD
245155V	BNSF	POWDER RIVER	TWIN PEAKS			TEXLIN-TRINIDAD	021808	17	35	1	35	2	13	LAS ANIMAS	TRINIDAD
245158R	BNSF	POWDER RIVER	TWIN PEAKS		TRINIDAD EO CR	TEXLIN-TRINIDAD	022279	17	35	1	35	2	67	LAS ANIMAS	TRINIDAD
245160S	BNSF	POWDER RIVER	TWIN PEAKS		TRNDAD EO CR	TEXLIN-TRINIDAD	023070	17	35	1	35	2	27	LAS ANIMAS	TRINIDAD
245165B	BNSF	POWDER RIVER	TWIN PEAKS		TRINCRA NWO CR	TEXLIN-TRINIDAD	024518	17	35	1	35	2	13	LAS ANIMAS	TRINCHERA
245169D	BNSF	POWDER RIVER	TWIN PEAKS		TRINCRA EO CR	TEXLIN-TRINIDAD	025318	17	35	1	35	2	54	LAS ANIMAS	TRINCHERA
245172L	BNSF	POWDER RIVER	TWIN PEAKS		OLIVER SWO MAIN	TEXLIN-TRINIDAD	026209	17	35	1	35	2	13	LAS ANIMAS	BRANSON

public Benefits & Costs study

of the Proposed BNSF/UP Front Range Railroad Infrastructure Rationalization Project



Table 4.2.12 Existing At-grade Crossings
Wiggins to Denver along I-76

Xing ID	RR	RR Division	RR Subdivision	Highway	Street	Branch	MP	TPD 2004	Max. TT Speed	Min. Speed	Max Speed	# of Lanes	AADT 2004	County	City
057229S	BNSF	POWDER RIVER	BRUSH	CR 3	CO RD 3	E BRUSH-20TH ST	048019	33	79	1	79	2	269	MORGAN	WIGGINS
057228K	BNSF	POWDER RIVER	BRUSH	CR 2	CO RD 2	E BRUSH-20TH ST	048137	36	79	1	79	2	27	MORGAN	WIGGINS
057224H	BNSF	POWDER RIVER	BRUSH	CR 75	CO RD 75	E BRUSH-20TH ST	049445	36	79	1	79	2	67	WELD	ROGGEN
057218E	BNSF	POWDER RIVER	BRUSH	CR 63	CO RD 63	E BRUSH-20TH ST	050247	36	79	1	79	2	13	WELD	KEENESBURG
057215J	BNSF	POWDER RIVER	BRUSH		ELM ST	E BRUSH-20TH ST	050543	36	79	1	79	2	1211	WELD	KEENESBURG
057213V	BNSF	POWDER RIVER	BRUSH	CR 53	CO RD 53	E BRUSH-20TH ST	050806	36	79	1	79	2	135	WELD	KEENESBURG
057212N	BNSF	POWDER RIVER	BRUSH	CR 51	CO RD 51	E BRUSH-20TH ST	050908	36	79	1	79	2	27	WELD	HUDSON
089363S	BNSF	POWDER RIVER	BRUSH	CR 160	CO RD 160	E BRUSH-20TH ST	052043	36	79	1	79	2	135	ADAMS	BRIGHTON
057200U	BNSF	POWDER RIVER	BRUSH		BROMLEY	E BRUSH-20TH ST	052183	36	79	1	79	2	538	ADAMS	BRIGHTON
057195A	BNSF	COLORADO	BRUSH		E 120TH AVE	E BRUSH-20TH ST	052727	36	79	1	79	2	4632	ADAMS	BRIGHTON
057193L	BNSF	POWDER RIVER	BRUSH		POTOMAC ST	E BRUSH-20TH ST	052829	36	79	1	79	2	49	ADAMS	HENDERSON
057191X	BNSF	POWDER RIVER	BRUSH	FAS 44	104TH AVE	E BRUSH-20TH ST	052996	36	79	1	79	2	10018	ADAMS	ROCKY MT ARSENAL
057187H	BNSF	POWDER RIVER	BRUSH	FAU1734	88TH AVE	E BRUSH-20TH ST	053265	36	79	1	79	2	3047	ADAMS	COMMERCE CITY
057186B	BNSF	POWDER RIVER	BRUSH	FAU1718	80TH AVE	E BRUSH-20TH ST	053403	36	79	1	79	4	16091	ADAMS	COMMERCE CITY
057185U	BNSF	POWDER RIVER	BRUSH	FAU1698	72ND AVE	E BRUSH-20TH ST	053534	36	79	1	79	4	21454	ADAMS	COMMERCE CITY
057074C	BNSF	POWDER RIVER	BRUSH	FAU1642	56TH AVE	E BRUSH-20TH ST	053800	36	40	1	40	2	7680	ADAMS	COMMERCE CITY
057076R	BNSF	POWDER RIVER	BRUSH		RIVERSIDE CEM	E BRUSH-20TH ST	053896	36	40	1	40	2	269	DENVER	DENVER

public Benefits & Costs study

of the Proposed BNSF/UP Front Range Railroad Infrastructure Rationalization Project



Table 4.2.13 Existing At-grade Crossings
Along US 50 from Las Animas to Pueblo

Xing ID	RR	RR Division	RR Subdivision	Highway	Street	Branch	MP	TPD 2004	Max. TT Speed	Min. Speed	Max Speed	# of Lanes	AADT 2004	County	City
003268H	BNSF	KANSAS	LA JUNTA	CR	CO RD	ELLINOR-LAJUNTA	053923	13	90	1	90	2	14	BENT	LAS ANIMAS
003269P	BNSF	KANSAS	LA JUNTA	CR	CO RD	ELLINOR-LAJUNTA	054020	13	90	1	90	1	14	BENT	LAS ANIMAS
003270J	BNSF	KANSAS	LA JUNTA	CR 6.25	CO RD 6.25	ELLINOR-LAJUNTA	054045	14	90	1	90	1	7	BENT	LAS ANIMAS
003260D	BNSF	KANSAS	LA JUNTA	CR 12-5	CO RD 12-5	ELLINOR-LAJUNTA	053427	13	90	1	90	1	14	BENT	LAS ANIMAS
003265M	BNSF	KANSAS	LA JUNTA	CR 8.75	CO RD 8.75	ELLINOR-LAJUNTA	053797	14	90	1	90	2	28	BENT	LAS ANIMAS
003267B	BNSF	KANSAS	LA JUNTA	CR	CO RD	ELLINOR-LAJUNTA	053848	13	90	1	90	1	14	BENT	LAS ANIMAS
003272X	BNSF	KANSAS	LA JUNTA	CR	CO RD	ELLINOR-LAJUNTA	054121	13	90	1	90	1	28	BENT	LAS ANIMAS
003278N	BNSF	KANSAS	LA JUNTA	CR 36	CO RD 36	ELLINOR-LAJUNTA	054714	14	90	1	90	2	14	OTERO	LA JUNTA
003281W	BNSF	KANSAS	LA JUNTA	CR 33	CO RD 33	ELLINOR-LAJUNTA	055061	13	90	1	90	2	140	OTERO	LA JUNTA
003366Y	BNSF	POWDER RIVER	PUEBLO		CO RD	LA JUNTA-PUEBLO	055965	11	55	1	55	2	70	OTERO	SWINK
003367F	BNSF	POWDER RIVER	PUEBLO		MAIN ST	LA JUNTA-PUEBLO	055997	11	55	1	55	2	840	OTERO	SWINK
003368M	BNSF	POWDER RIVER	PUEBLO	CR 173	CO RD 173	LA JUNTA-PUEBLO	056053	11	55	1	55	2	42	OTERO	SWINK
003370N	BNSF	POWDER RIVER	PUEBLO	CR 23	CO RD 23	LA JUNTA-PUEBLO	056165	11	55	1	55	2	137	OTERO	SWINK
003372C	BNSF	POWDER RIVER	PUEBLO		18TH RD SE	LA JUNTA-PUEBLO	056220	11	55	1	55	2	82	OTERO	SWINK
003373J	BNSF	POWDER RIVER	PUEBLO		15TH RD SE	LA JUNTA-PUEBLO	056276	11	55	1	55	2	82	OTERO	ROCKY FORD
003375X	BNSF	POWDER RIVER	PUEBLO	CR 79	10TH RD NE	LA JUNTA-PUEBLO	056388	11	55	1	55	2	137	OTERO	ROCKY FORD
003377L	BNSF	POWDER RIVER	PUEBLO	CR 81	3RD RD NE	LA JUNTA-PUEBLO	056444	11	55	1	55	2	137	OTERO	ROCKY FORD
003382H	BNSF	POWDER RIVER	PUEBLO	NFA 71	12TH ST	LA JUNTA-PUEBLO	056531	11	55	1	55	2	4394	OTERO	ROCKY FORD
003383P	BNSF	POWDER RIVER	PUEBLO		10TH ST	LA JUNTA-PUEBLO	056546	11	55	1	55	2	280	OTERO	ROCKY FORD
003384W	BNSF	POWDER RIVER	PUEBLO		MAIN ST	LA JUNTA-PUEBLO	056555	11	55	1	55	4	2800	OTERO	ROCKY FORD
003385D	BNSF	POWDER RIVER	PUEBLO		9TH ST	LA JUNTA-PUEBLO	056563	11	55	1	55	2	280	OTERO	ROCKY FORD
003386K	BNSF	POWDER RIVER	PUEBLO		7TH ST	LA JUNTA-PUEBLO	056577	11	55	1	55	2	1400	OTERO	ROCKY FORD
003387S	BNSF	POWDER RIVER	PUEBLO		5TH ST	LA JUNTA-PUEBLO	056591	11	55	1	55	2	700	OTERO	ROCKY FORD
003395J	BNSF	POWDER RIVER	PUEBLO	CR 93	CR93 10TH RD NW	LA JUNTA-PUEBLO	056725	11	55	1	55	2	700	OTERO	ROCKY FORD
003401K	BNSF	POWDER RIVER	PUEBLO	CR 183	CO RD 183	LA JUNTA-PUEBLO	056853	11	40	1	40	2	56	OTERO	ROCKY FORD
003404F	BNSF	POWDER RIVER	PUEBLO		20TH ST	LA JUNTA-PUEBLO	056950	11	40	1	40	2	28	OTERO	ROCKY FORD
003407B	BNSF	POWDER RIVER	PUEBLO	CR 155	CO RD 155	LA JUNTA-PUEBLO	057061	11	40	1	40	2	28	OTERO	MANZANOLA
003414L	BNSF	POWDER RIVER	PUEBLO		35TH ST	LA JUNTA-PUEBLO	057283	11	40	1	40	2	42	OTERO	MANZANOLA
003421W	BNSF	POWDER RIVER	PUEBLO	CR 199	CO RD 199	LA JUNTA-PUEBLO	057499	11	40	1	40	1	28	OTERO	MANZANOLA
003422D	BNSF	POWDER RIVER	PUEBLO		45 67RD NO SH50	LA JUNTA-PUEBLO	057578	11	40	1	40	1	14	OTERO	MANZANOLA
003426F	BNSF	POWDER RIVER	PUEBLO	CR 215	CO RD 215	LA JUNTA-PUEBLO	057653	11	40	1	40	2	28	OTERO	MANZANOLA
003427M	BNSF	POWDER RIVER	PUEBLO	CR 207	CO RD 207	LA JUNTA-PUEBLO	057703	11	40	1	40	1	7	OTERO	MANZANOLA
003433R	BNSF	POWDER RIVER	PUEBLO	CR 5.25	CO RD 5.25	LA JUNTA-PUEBLO	058084	11	40	1	40	1	14	OTERO	FOWLER
003435E	BNSF	POWDER RIVER	PUEBLO	CR 219	CO RD 219	LA JUNTA-PUEBLO	058161	11	40	1	40	1	14	OTERO	FOWLER
003456X	BNSF	POWDER RIVER	PUEBLO	NOSH50	PECOS ST	LA JUNTA-PUEBLO	059000	11	40	1	40	2	140	PUEBLO	FOWLER
003460M	BNSF	POWDER RIVER	PUEBLO		CHICO RD	LA JUNTA-PUEBLO	060666	11	55	1	55	2	28	PUEBLO	AVONDALE
003470T	BNSF	POWDER RIVER	PUEBLO		22ND LANE	LA JUNTA-PUEBLO	061524	11	55	1	55	2	619	PUEBLO	PUEBLO
003471A	BNSF	POWDER RIVER	PUEBLO		VISION LANE	LA JUNTA-PUEBLO	061562	11	55	1	55	2	137	PUEBLO	PUEBLO

public Benefits & Costs study

of the Proposed BNSF/UP Front Range Railroad Infrastructure Rationalization Project



**Table 4.2.14 Existing At-grade Crossings
Southern Portion of Denver Metro Area along US 85 and between Utah and Belt Junction**

Xing ID	RR	RR Division	RR Subdivision	Highway	Street	Branch	MP	TPD 2004	Max. TT Speed	Min. Speed	Max Speed	# of Lanes	AADT 2004	County	City
057090L	BNSF	DENVER	DENVER FREIGHT	FAU1441	19TH NWO CHESTNUT	MAIN	054203	51	20	3	20	2	269	DENVER	DENVER
003627W	BNSF	CENTRAL	DENVER	SH 470A	CTYLN RD EO US85	MAIN	072318	45	45	40	45	2	4566	DOUGLAS	LOUVIERS
003630E	BNSF	CENTRAL	DENVER	FAU1050	RIDGE EO SAN FE	MAIN	072577	45	45	20	25	4	8892	ARAPAHOE	LITTLETON
004059D	BNSF	CENTRAL	DENVER		TUFTS AVE	MAIN	072801	41	45	1	45	3	6341	ARAPAHOE	ENGLEWOOD
004060X	BNSF	CENTRAL	DENVER	FAU1102	QUINCY AVE	MAIN	072839	41	45	1	45	3	8878	ARAPAHOE	ENGLEWOOD
253266H	UP	DENVER	SUB DIVN 1-A	SH 53A	BROADWAY SO 60TH	BELT LINE	000086	9	20	10	20	2	15114	ADAMS	DENVER
253269D	UP	DENVER	SUB DIVN 1-A	FAU1471	WASHTNST SO62NDAV	BELT LINE	000136	9	20	5	20	2	14628	ADAMS	DENVER



public Benefits & Costs study

of the Proposed BNSF/UP Front Range Railroad Infrastructure Rationalization Project



Table 4.2.15 Existing At-grade Crossings
North Denver Metro to Gilcrest along US 85

Xing ID	RR	RR Division	RR Subdivision	Highway	Street	Branch	MP	TPD 2004	Max. TT Speed	Min. Speed	Max Speed	# of Lanes	AADT 2004	County	City
804594Y	UP	CENTRAL REGION	WYOMING DIV.	FAU1734	88THAVEWOROSEMARY	D P M L	000894	18	79	60	79	2	12678	ADAMS	THORNTON
804592K	UP	CENTRAL REGION	WYOMING DIV.		E. 96THAVE EO 176	D P M L	001010	18	79	60	79	2	8960	ADAMS	THORNTON
804433D	UP	CENTRAL REGION	WYOMING DIV.	SH 44A	104THAVE EO US 85	D P M L	001125	26	79	60	79	2	13240	ADAMS	THORNTON
804467X	UP	CENTRAL REGION	WYOMING DIV.		E132NDAVE EO US85	D P M L	001523	26	79	60	79	2	256	ADAMS	HENDERSON
804468E	UP	CENTRAL REGION	WYOMING DIV.		E136THAVE EO US85	D P M L	001580	27	79	60	79	2	378	ADAMS	BRIGHTON
804476W	UP	CENTRAL REGION	WYOMING DIV.		E144THAVE EO US85	D P M L	001690	25	79	60	79	2	1602	ADAMS	BRIGHTON
804487J	UP	CENTRAL REGION	WYOMING DIV.	FAU6202	BROMLEYLN EO MAIN	D P M L	001795	26	79	62	79	4	6701	ADAMS	BRIGHTON
804485V	UP	CENTRAL REGION	WYOMING DIV.	FAU6224	EGBERT WO 2ND AVE	D P M L	001877	27	40	25	40	2	4235	ADAMS	BRIGHTON
804484N	UP	CENTRAL REGION	WYOMING DIV.		BUSHST EO CABBAGE	D P M L	001885	26	40	25	40	2	5099	ADAMS	BRIGHTON
804481T	UP	CENTRAL REGION	WYOMING DIV.		CR4 EO CR27	D P M L	002098	29	79	60	79	2	73	WELD	BRIGHTON
804475P	UP	CENTRAL REGION	WYOMING DIV.		CR6 EO CR27	D P M L	002198	26	79	60	79	2	73	WELD	BRIGHTON
804472U	UP	CENTRAL REGION	WYOMING DIV.		CR8 EO CR27	D P M L	002300	25	79	60	79	2	140	WELD	FORT LUPTON
804488R	UP	CENTRAL REGION	WYOMING DIV.		CR10 EO CR27	D P M L	002400	26	79	60	79	2	73	WELD	FORT LUPTON
804461G	UP	CENTRAL REGION	WYOMING DIV.		CR12 EO DENVER	D P M L	002500	26	79	60	79	2	58	WELD	FORT LUPTON
804463V	UP	CENTRAL REGION	WYOMING DIV.	SH 52A	1ST ST EO MAINAVE	D P M L	002551	25	79	60	79	2	5038	WELD	FORT LUPTON
804374D	UP	CENTRAL REGION	WYOMING DIV.		14TH ST EO US 85	D P M L	002648	24	79	60	79	2	81	WELD	FORT LUPTON
804375K	UP	CENTRAL REGION	WYOMING DIV.		CR 16 EO US 85	D P M L	002698	25	79	60	79	2	70	WELD	FORT LUPTON
804377Y	UP	CENTRAL REGION	WYOMING DIV.		CR 18 EO US 85	D P M L	002797	26	79	60	79	2	73	WELD	FORT LUPTON
804378F	UP	CENTRAL REGION	WYOMING DIV.		CR 18.5 EO US 85	D P M L	002850	26	79	60	79	2	29	WELD	FORT LUPTON
804379M	UP	CENTRAL REGION	WYOMING DIV.		CR 20 EO US 85	D P M L	002900	26	79	60	79	2	29	WELD	FORT LUPTON
804329J	UP	CENTRAL REGION	WYOMING DIV.		CR 22 EO US 85	D P M L	003000	26	79	60	79	2	87	WELD	FORT LUPTON
804334F	UP	CENTRAL REGION	WYOMING DIV.		CR 26 EO US 85	D P M L	003200	25	79	60	79	2	28	WELD	PLATTEVILLE
804336U	UP	CENTRAL REGION	WYOMING DIV.		CR 28 EO US 85	D P M L	003301	25	79	60	79	2	28	WELD	PLATTEVILLE
804342X	UP	CENTRAL REGION	WYOMING DIV.		CR 34 EO US 85	D P M L	003602	26	79	60	79	2	29	WELD	PLATTEVILLE
804343E	UP	CENTRAL REGION	WYOMING DIV.		CR 36 EO US 85	D P M L	003705	26	79	60	79	2	29	WELD	PLATTEVILLE
804347G	UP	CENTRAL REGION	WYOMING DIV.		CR 38 EO US 85	D P M L	003842	25	79	60	79	1	14	WELD	GILCREST
804346A	UP	CENTRAL REGION	WYOMING DIV.		CR 29 SO US 85	D P M L	003902	25	79	60	79	2	56	WELD	GILCREST
804345T	UP	CENTRAL REGION	WYOMING DIV.		CR 40 EO US 85	D P M L	003972	25	79	60	79	2	84	WELD	GILCREST



Table 4.2.16 Existing At-grade Crossings
Gilcrest to the Wyoming Border along US 85

Xing ID	RR	RR Division	RR Subdivision	Highway	Street	Branch	MP	TPD 2004	Max. TT Speed	Min. Speed	Max Speed	# of Lanes	AADT 2004	County	City
804348N	UP	CENTRAL REGION	WYOMING DIV.		CR 42 EO US 85	D P M L	004103	25	79	60	79	2	140	WELD	GILCREST
804351W	UP	CENTRAL REGION	WYOMING DIV.		CR 33 SO US 85	D P M L	004208	25	79	60	79	2	140	WELD	GILCREST
804354S	UP	CENTRAL REGION	WYOMING DIV.		CR 35 EO US 85	D P M L	004365	25	79	60	79	2	14	WELD	LA SALLE
804355Y	UP	CENTRAL REGION	WYOMING DIV.		CR 37 EO US 85	D P M L	004518	25	79	60	79	2	70	WELD	LA SALLE
804359B	UP	CENTRAL REGION	WYOMING DIV.		42ND EO STATE	D P M L	004790	8	70	50	70	2	140	WELD	EVANS
804361C	UP	CENTRAL REGION	WYOMING DIV.		39TH EO STATE	D P M L	004820	7	55	40	55	2	673	WELD	EVANS
804362J	UP	CENTRAL REGION	WYOMING DIV.	FAU5502	37TH-W OF CENTRAL	D P M L	004845	8	79	60	79	2	4901	WELD	EVANS
804363R	UP	CENTRAL REGION	WYOMING DIV.	FAU5510	31ST WO EMPIRE	D P M L	004899	8	79	60	79	4	1680	WELD	EVANS
804365E	UP	CENTRAL REGION	WYOMING DIV.	US 34D	18TH ST WO 3RDAVE	D P M L	005079	8	79	60	79	2	4312	WELD	GREELEY
804366L	UP	CENTRAL REGION	WYOMING DIV.	FAU5542	16TH ST EO 6THAVE	D P M L	005105	8	20	20	20	4	4831	WELD	GREELEY
804848L	UP	CENTRAL REGION	WYOMING DIV.		CR 70 EO US 85	D P M L	005678	9	79	60	79	2	219	WELD	EATON
804852B	UP	CENTRAL REGION	WYOMING DIV.		CR 72 EO US 85	D P M L	005780	9	79	60	79	2	73	WELD	EATON
804855W	UP	CENTRAL REGION	WYOMING DIV.		5TH EO US 85	D P M L	005933	9	79	60	79	2	73	WELD	EATON
804856D	UP	CENTRAL REGION	WYOMING DIV.		CR 76 EO US 85	D P M L	005988	8	79	60	79	2	140	WELD	EATON
804857K	UP	CENTRAL REGION	WYOMING DIV.		CR 37 EO US 85	D P M L	006019	8	79	60	79	2	280	WELD	EATON
804859Y	UP	CENTRAL REGION	WYOMING DIV.		CR 78 EO US 85	D P M L	006094	9	79	60	79	2	73	WELD	EATON
804860T	UP	CENTRAL REGION	WYOMING DIV.		CR 80 EO US 85	D P M L	006199	8	79	60	79	2	70	WELD	AULT
804878D	UP	CENTRAL REGION	WYOMING DIV.	COUNTY	CR 84 EO US 85	D P M L	006407	9	79	60	79	2	87	WELD	AULT
804881L	UP	CENTRAL REGION	WYOMING DIV.		CR 86 EO US 85	D P M L	006509	9	79	60	79	2	73	WELD	PIERCE
804868X	UP	CENTRAL REGION	WYOMING DIV.		CR 88 EO US 85	D P M L	006610	9	79	60	79	2	146	WELD	PIERCE
804874B	UP	CENTRAL REGION	WYOMING DIV.		CR 90 EO US 85	D P M L	006710	9	79	60	79	2	1020	WELD	PIERCE
804873U	UP	CENTRAL REGION	WYOMING DIV.		CR 92-E OF US 85	D P M L	006820	9	79	60	79	1	44	WELD	PIERCE
804872M	UP	CENTRAL REGION	WYOMING DIV.		CR 94 EO US 85	D P M L	006920	9	79	60	79	2	29	WELD	PIERCE
804870Y	UP	CENTRAL REGION	WYOMING DIV.		CR 98 EO US 85	D P M L	007120	9	79	60	79	2	44	WELD	NUNN
804865C	UP	CENTRAL REGION	WYOMING DIV.		CR 104 WO US 85	D P M L	007427	9	79	60	79	2	73	WELD	NUNN
804850M	UP	CENTRAL REGION	WYOMING DIV.		CR108 EO CR27	D P M L	007645	9	79	60	79	2	29	WELD	NUNN
804849T	UP	CENTRAL REGION	WYOMING DIV.		CR 110 EO CR 27	D P M L	007725	9	79	60	79	2	44	WELD	NUNN
804863N	UP	CENTRAL REGION	WYOMING DIV.		CR 118 AT CR 23	D P M L	008198	9	79	60	79	2	29	WELD	CARR

public Benefits & Costs study

of the Proposed BNSF/UP Front Range Railroad Infrastructure Rationalization Project



Table 4.2.17 Existing At-grade Crossings
South Denver to Pueblo along US 85 to Castle Rock then along I-25

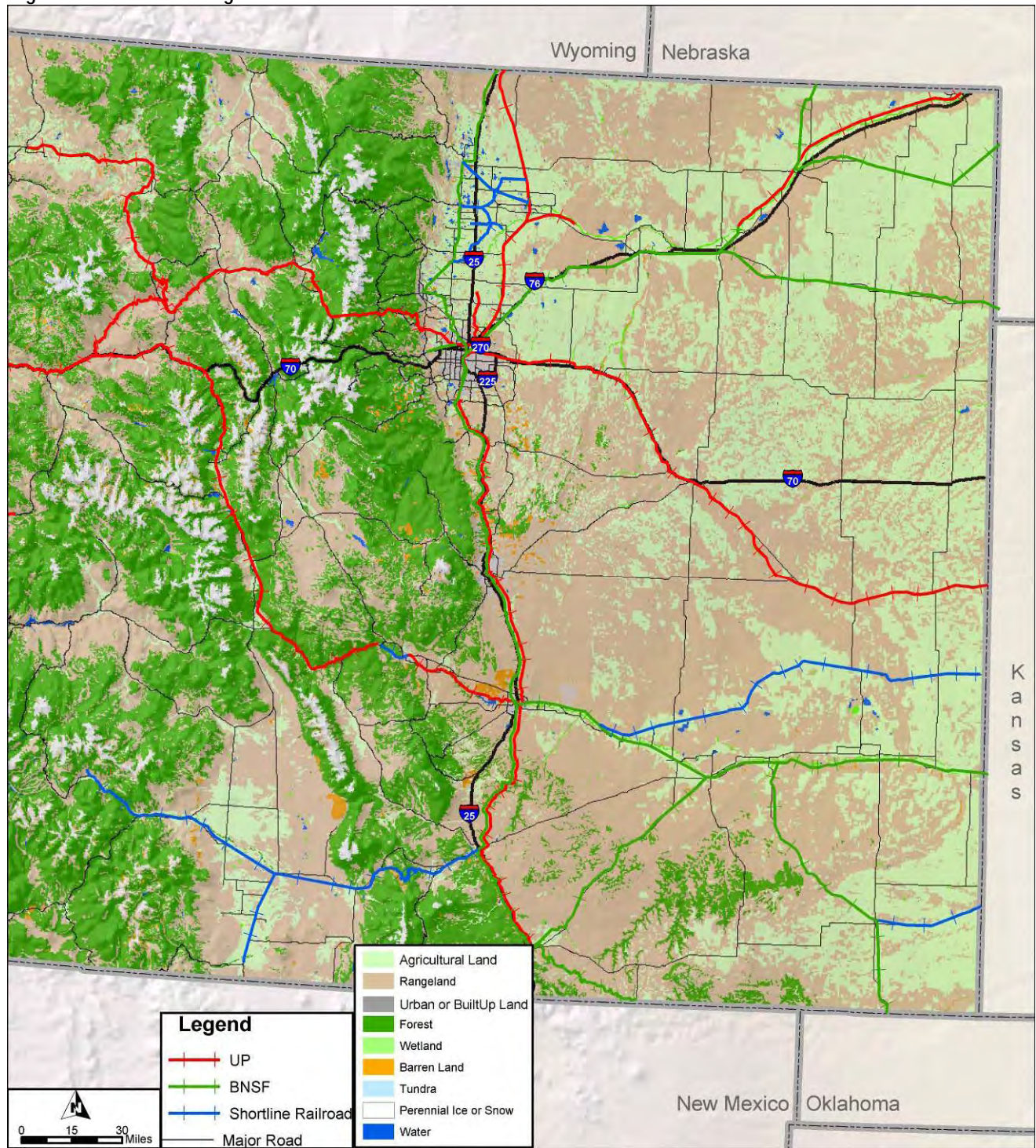
Xing ID	RR	RR Division	RR Subdivision	Highway	Street	Branch	MP	TPD 2004	Max. TT Speed	Min. Speed	Max Speed	# of Lanes	AADT 2004	County	City
253053X	UP	DENVER	JOINT LINE		TITANRD(CR7)WO 85	MAIN	001847	29	45	25	35	2	2573	ARAPAHOE	HIGHLANDS RANCH
253057A	UP	DENVER	JOINT LINE		AIRPORTRD WO US85	MAIN	002143	19	45	35	45	2	1608	DOUGLAS	LOUVIERS
253065S	UP	DENVER	JOINT LINE	SH 86A	5TH EO PERRY	MAIN	003242	58	45	25	45	2	15583	DOUGLAS	CASTLE ROCK
253066Y	UP	DENVER	JOINT LINE		3RD AT FRONT	MAIN	003257	29	45	20	45	2	2413	DOUGLAS	CASTLE ROCK
253068M	UP	DENVER	JOINT LINE		CR 5JO EO FAI25	MAIN	003505	29	45	40	45	2	16	DOUGLAS	CASTLE ROCK
253070N	UP	DENVER	JOINT LINE	SH 18A	NORM SMITH GULCH	MAIN	004206	58	45	20	45	2	586	DOUGLAS	LARKSPUR
253071V	UP	DENVER	JOINT LINE		PLUMCREEK&FRANKRD	MAIN	004311	29	45	20	45	2	32	DOUGLAS	LARKSPUR
253073J	UP	DENVER	JOINT LINE		NOE RD(CR74)-WFAI	MAIN	004689	29	45	15	45	2	32	DOUGLAS	PALMER LAKE
253076E	UP	DENVER	JOINT LINE		2ND-EO MITCHELL	MAIN	005582	48	45	25	45	2	609	EL PASO	MONUMENT
253077L	UP	DENVER	JOINT LINE		BPTSASSEMBRDWOI25	MAIN	005840	48	45	25	45	2	414	EL PASO	MONUMENT
253109P	UP	DENVER	JOINT LINE		ROYER NO LASVEGAS	MAIN	007664	44	55	30	45	2	437	EL PASO	COLORADO SPGS
253121W	UP	DENVER	JOINT LINE		MESA RD EO US 85	MAIN	008575	22	55	30	55	2	11580	EL PASO	FOUNTAIN
253122D	UP	DENVER	JOINT LINE		COMANCHEVIL(E085)	MAIN	008706	18	55	30	45	4	10311	EL PASO	FOUNTAIN
253124S	UP	DENVER	JOINT LINE	FAU2926	OHIO WO MESA ROAD	MAIN	008819	21	55	30	45	4	7984	EL PASO	FOUNTAIN
253125Y	UP	DENVER	JOINT LINE		LINKRD(EOLDPUEBRD	MAIN	008962	32	55	45	55	2	7863	EL PASO	FOUNTAIN
253126F	UP	DENVER	JOINT LINE		BIRDSALL(CR60)E P	MAIN	009240	22	55	30	45	2	15	EL PASO	FOUNTAIN
253127M	UP	DENVER	JOINT LINE		OLDPUEBLO RDCR415	MAIN	009305	22	55	30	45	2	293	EL PASO	FOUNTAIN
253128U	UP	DENVER	JOINT LINE		OLDPUEBLORD EOI25	MAIN	009515	24	55	30	45	2	48	EL PASO	FOUNTAIN
253129B	UP	DENVER	JOINT LINE		WIGWAM(CR1250)EOF	MAIN	009910	22	55	30	45	1	44	EL PASO	FOUNTAIN
253130V	UP	DENVER	JOINT LINE		CO LN RD EO I25	MAIN	010022	22	55	30	45	1	15	EL PASO	FOUNTAIN
253131C	UP	DENVER	JOINT LINE		TOTTON RD (CR102)	MAIN	010128	26	55	30	45	1	29	PUEBLO	FOUNTAIN
253144D	UP	DENVER	JOINT LINE		CR 104 EO I25	MAIN	010460	26	55	30	45	2	15	PUEBLO	PUEBLO
253132J	UP	DENVER	JOINT LINE		PINON RD EO I25	MAIN	010542	26	55	30	45	1	15	PUEBLO	PUEBLO
253134X	UP	DENVER	JOINT LINE		CR110-E OF FAI25	MAIN	010638	26	55	45	30	1	15	PUEBLO	PUEBLO
253136L	UP	DENVER	JOINT LINE	NFA 25	EDEN EXIT 104 I25	MAIN	011261	58	50	30	50	2	161	PUEBLO	PUEBLO
253137T	UP	DENVER	JOINT LINE		40TH ST. EO I25	MAIN	011516	26	50	30	50	2	364	PUEBLO	PUEBLO
253141H	UP	DENVER	JOINT LINE		26TH ST EO I25	MAIN	011628	29	50	15	45	2	32	PUEBLO	PUEBLO

public Benefits & Costs study

of the Proposed BNSF/UP Front Range Railroad Infrastructure Rationalization Project



Figure 4.2.13 Existing Land Use - 2004



public Benefits & Costs study

of the Proposed BNSF/UP Front Range Railroad Infrastructure Rationalization Project



Figure 4.2.14 Sample Corridor - Existing Land Use Noise Receptors

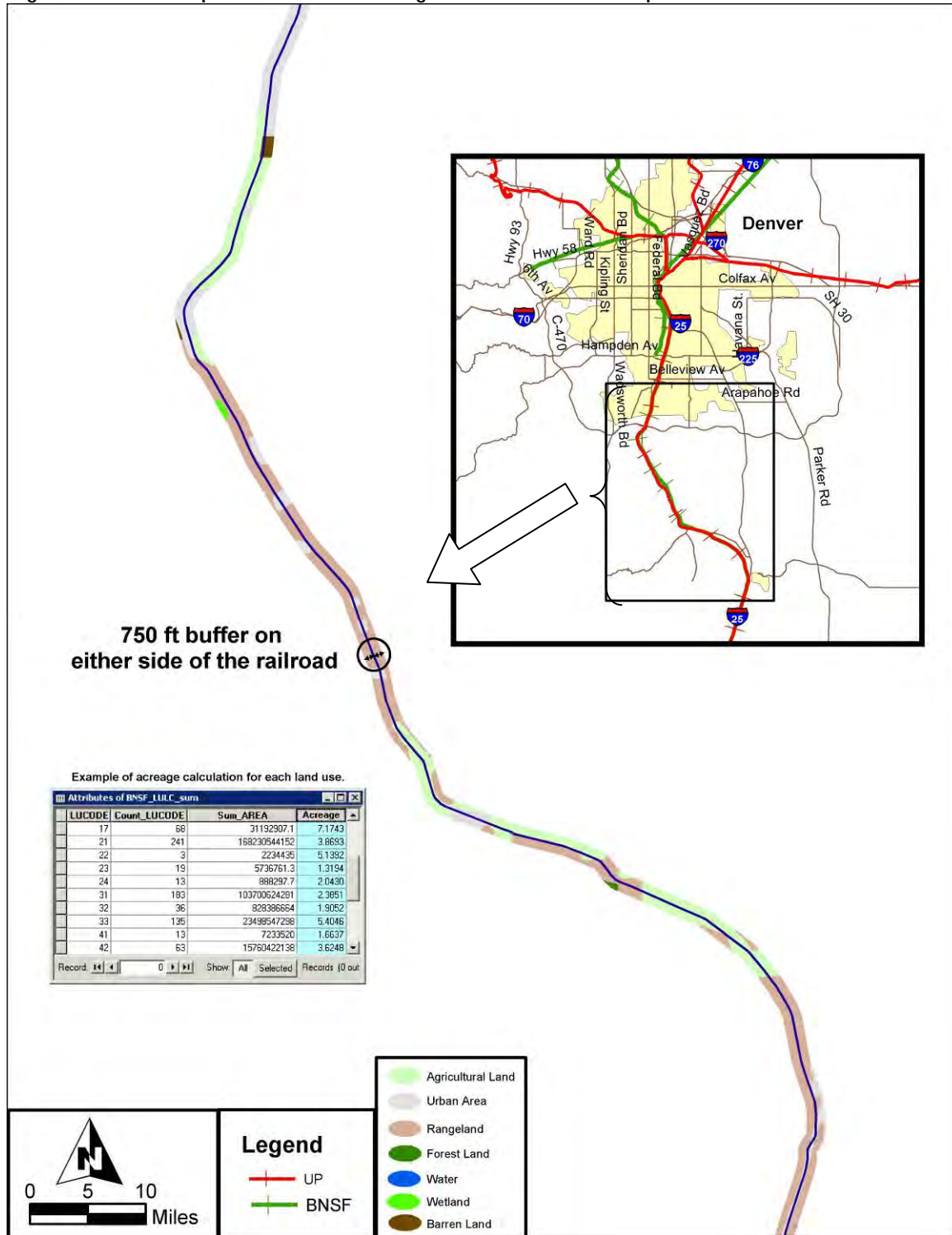




Table 4.2.18 Land Use Acres

750 ft Buffer along New segments		
LUCODE	Description of Land Use Code	Total ACRES of each LU
14	Transportation, communication, utilities	62.4430
21	Cropland and pasture	9562.9770
31	Herbaceous rangeland	2919.4710
33	Mixed rangeland	2806.5200
61	Forested wetland	344.7280
62	Nonforested wetland	684.3030
71	Dry salt flats	20.7310
73	Sandy areas, not beaches	6.9420

First Number of LUCODE	
1	Urban or Built Up Land
2	Agricultural Land
3	Rangeland
4	Forest Land
5	Water
6	Wetland
7	Barren Land
8	Tundra
9	Perennial snow or ice

750 ft Buffer along selected BN segments affected by study		
LUCODE	Description of Land Use Code	Total ACRES of each LU
11	Residential	1011.1310
12	Commercial and services	796.8050
13	Industrial	291.4090
14	Transportation, communication, utilities	1956.2320
16	Mixed urban or built-up land	619.6320
17	Other urban or built-up land	173.1920
21	Cropland and pasture	18532.9020
22	Orchards, groves, vineyards, nurseries and ornamental horticultural areas	16.6970
23	Confined feeding operations	205.0870
24	Other agricultural land	39.9250
31	Herbaceous rangeland	836.3190
32	Shrub and brush rangeland	74.8050
33	Mixed rangeland	9138.1860
53	Reservoirs	102.8950
61	Forested wetland	65.5960
62	Nonforested wetland	64.0590
76	Transitional areas	0.1090

750 ft Buffer along selected UP segments affected by study		
LUCODE	Description of Land Use Code	Total ACRES of each LU
0	No Data	4.9300
11	Residential	2777.0260
12	Commercial and services	4675.8600
13	Industrial	2039.6140
14	Transportation, communication, utilities	7854.8270
16	Mixed urban or built-up land	1387.0960
17	Other urban or built-up land	945.3390
21	Cropland and pasture	15949.4460
22	Orchards, groves, vineyards, nurseries and ornamental horticultural areas	87.2170
23	Confined feeding operations	18.0360
24	Other agricultural land	53.2820
31	Herbaceous rangeland	30238.2620
32	Shrub and brush rangeland	1536.2790
33	Mixed rangeland	4283.4940
41	Deciduous forest land	54.7190
42	Evergreen forest land	1647.6880
43	Mixed forest land	2.4460
53	Reservoirs	28.6490
61	Forested wetland	646.8670
62	Nonforested wetland	266.1690
75	Strip mines, quarries, gravel pits	83.7150
76	Transitional areas	775.3840