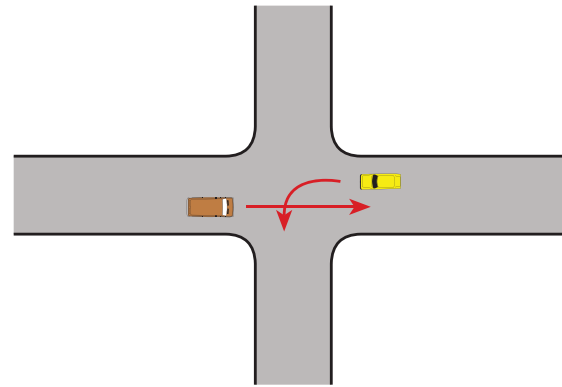
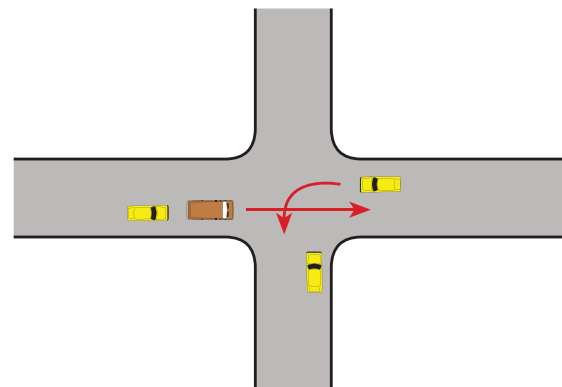


Level of Service (LOS) Definition

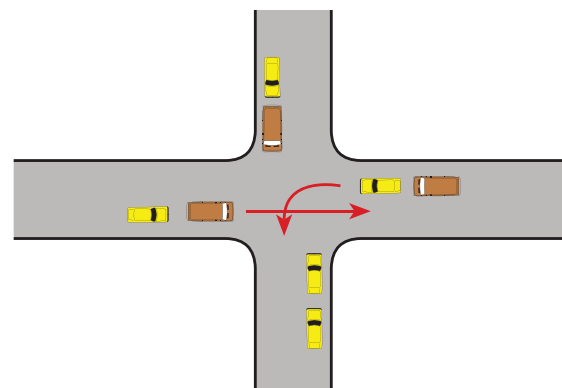
A No vehicle waits longer than one signal indication.



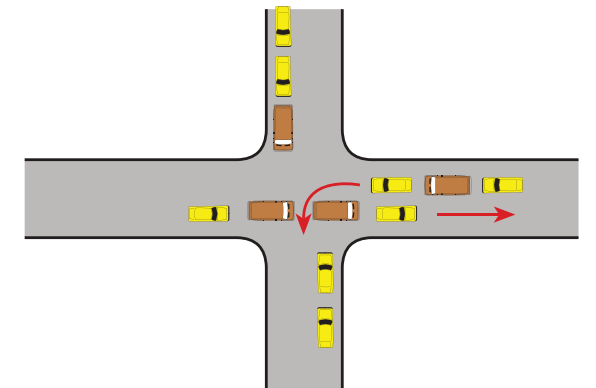
B On rare occasions vehicles wait through more than one signal indication.



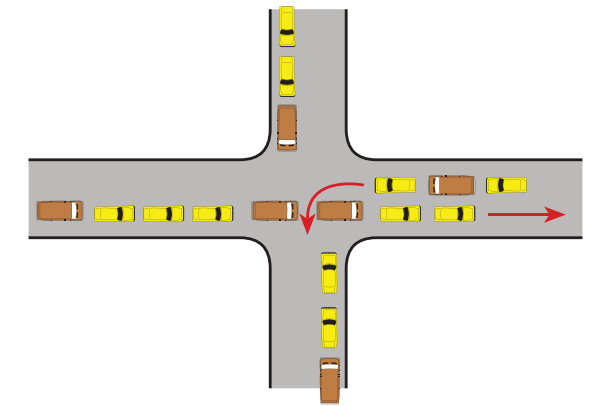
C Intermittently vehicles wait through more than one signal indication, occasionally backups may develop, traffic flow still stable and acceptable.



D Delays at intersections may become extensive, but enough cycles with lower demand occur to permit periodic clearance, preventing excessive backups. LOS D has historically been regarded as a desirable design objective in urban areas.



E Very long queues may create lengthy delays



F Backups from locations downstream restrict or prevent movement of vehicles out of approach creating "gridlock" condition

