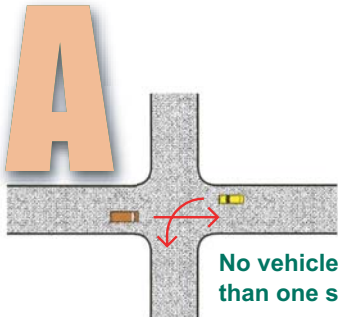
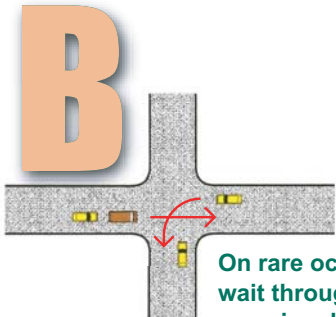




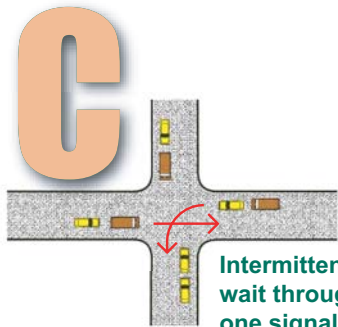
LOS - Levels of Service



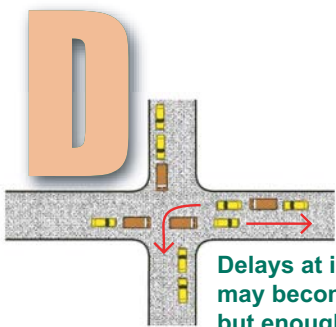
No vehicle waits longer than one signal indication



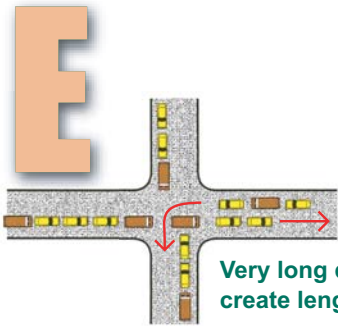
On rare occasion vehicles wait through more than one signal indication



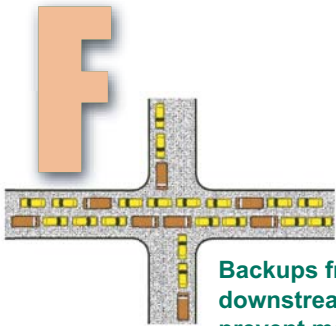
Intermittently vehicles wait through more than one signal indication, occasionally backups may develop, traffic flow still stable and acceptable



Delays at intersections may become extensive, but enough cycles with lower demand occur to permit periodic clearance, preventing excessive backups



Very long queues may create lengthy delays



Backups from locations downstream restrict or prevent movement of vehicles out of approach creating "gridlock" condition